

See OR 553/784
Easement lot 43
BL A
ONLY

29

REPLAT OF LOXAHATCHEE DISTRICT SUBDIVISION. LOXAHATCHEE GROVES

PALM BEACH COUNTY, FLORIDA.

PALM BEACH LOXAHATCHEE COMPANY
WEST PALM BEACH, FLORIDA.

A SUBDIVISION OF SECTIONS 17-18-19-20-21, THE N.W. 1/4 AND W. 1/2 OF S.W. 1/4 OF SECTION 22. THE W. 1/2 OF N.W. 1/4 AND W. 1/2 OF S.W. 1/4 OF SECTION 27. SECTIONS 28-29-30, ALL OF SECTIONS 31-32 & 33 NORTH OF WEST PALM BEACH CANAL, THE W. 1/2 OF N.W. 1/4 AND ALL OF W. 1/2 OF S.W. 1/4 OF SECTION 34 NORTH OF WEST PALM BEACH CANAL. ALL IN T. 43 S - R. 41 E.

STATE OF FLORIDA
The instrument was filed for record at
5:25 p.m. on the 5th day of June
1925 and was recorded in the office of
the Clerk of the Circuit Court, Palm Beach
County, Florida, in Book 29, Page 4 of Book
of Public Records.
J. G. Thorgeason, Clerk of Circuit Court
Palm Beach, Florida.

SCALE 1 IN. = 1000 FT.

DEDICATION -

State of Florida } ss
County of Palm Beach }
KNOW ALL MEN BY THESE PRESENTS, that the Palm Beach Loxahatchee Company Inc., a corporation organized and existing under the Laws of the State of Florida, the owners in fee simple of the tract of land shown hereon as Loxahatchee Groves, have caused the same to be surveyed and platted and do hereby dedicate to the perpetual use of the public as public highways all the roads shown hereon. Reserving however unto itself, its heirs, successors, assigns or legal representatives the reversion or reversions of the same whenever abandoned by the public or discontinued by Law. In witness whereof, it has caused these presents to be signed by its President, and attested by its Secretary this 4th day of June A.D. 1925
Palm Beach Loxahatchee Co. Inc.

Attest: *[Signature]* Secretary
[Signature] President

ACKNOWLEDGEMENT -

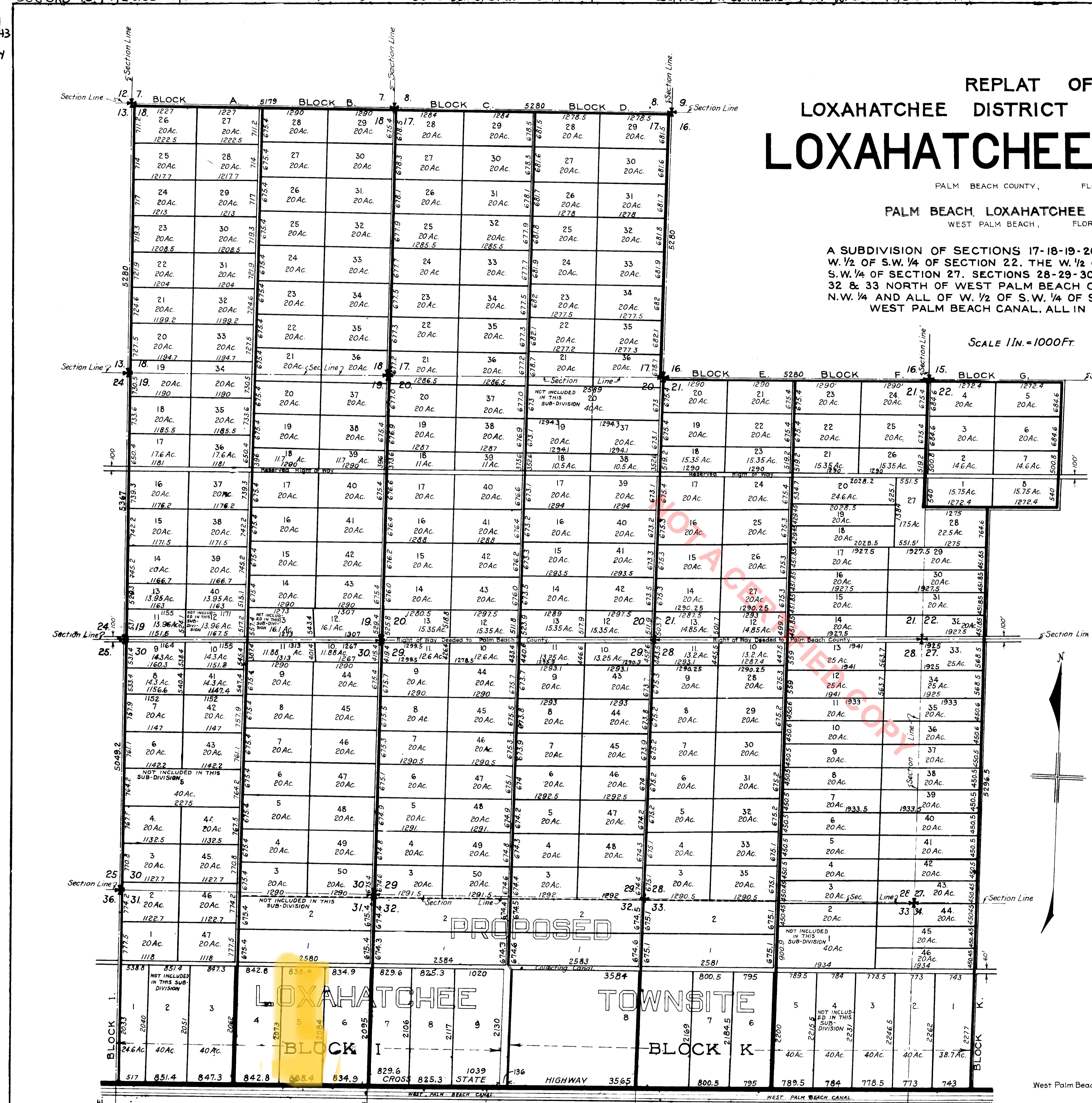
State of Florida } ss
County of Palm Beach }
I, the undersigned, an officer duly authorized to administer oaths and take acknowledgements, do hereby certify that on this day personally appeared before me George F. Bense and B. D. Cole, President and Secretary respectively, of the Palm Beach Loxahatchee Company Inc., a Florida corporation, to me well known to be the person described and who executed the foregoing instrument and acknowledged to and before me that they executed the same for the uses and purposes therein expressed. My commission expires Dec 2, 1928
A.D. 1925

AFFIDAVIT -

State of Florida } ss
County of Palm Beach }
I hereby certify that I have surveyed and caused to be platted the lands shown on the attached plat of the Sub-Division indicated and that said plat is a correct representation thereof to the best of my knowledge and belief.

Subscribed and sworn to before me this 4th day of June A.D. 1925
witness my hand and official seal at West Palm Beach, Florida.
My commission expires Dec 2, 1928

Field Work by: T. G. THORGEASON, C.E.
Fla. Eng. Cert. No. 246
Drawing by: CARR & McFADDEN, INC.
CIVIL ENGINEERS.
Fla. Eng. Cert. Nos. 173 & 250
WEST PALM BEACH - FLORIDA.



LEGEND
- Roads
- Canals and Drainage Ditches
Note: Combined width of right-of-way for ditch and road is 60ft. unless otherwise noted.

DRAWING NO 2146.