



Town of Loxahatchee Groves

Resilient Florida

Progress Update for the Town Council:

Anita Kane	—	Mayor
Margaret Herzog	—	Vice Mayor
Phillis Maniglia	—	Councilmember
Laura Donowski	—	Councilmember
Robert Shorr	—	Councilmember

October 1, 2024



Program Tasks & Timeline

Major Milestone

Completion Date

-
- Project Kickoff
December 2023
 - Data Collection
June 2024
 - Steering Committee Meeting No. 1
July 2024
 - **Public Outreach Meeting No. 1**
October 2024
 - Steering Committee Meeting No. 2
November 2024
 - Exposure Analysis
December 2024
 - Impact Analysis
February 2025
 - Public Outreach Meeting No. 2
March 2025
 - Steering Committee Meeting No. 3
March 2025
 - Final Report DRAFT
July 2025
 - Steering Committee Meeting No. 4
September 2025
 - **Final Report Submittal**
October 2025

COMPONENTS

BASINS

197 DRAINAGE AREAS

MANHOLES

15 STRUCTURES

CATCH BASINS

89 INLET STRUCTURES

CULVERT PIPES

125 TRAFFIC CULVERTS

482 DISCHARGE PIPES

VEHICULAR BRIDGE CROSSINGS

17

CANAL CROSS-SECTIONS

344 LOCATIONS

28.2 MILES

(DOES NOT INCLUDE OKEECHIBEE BLVD)

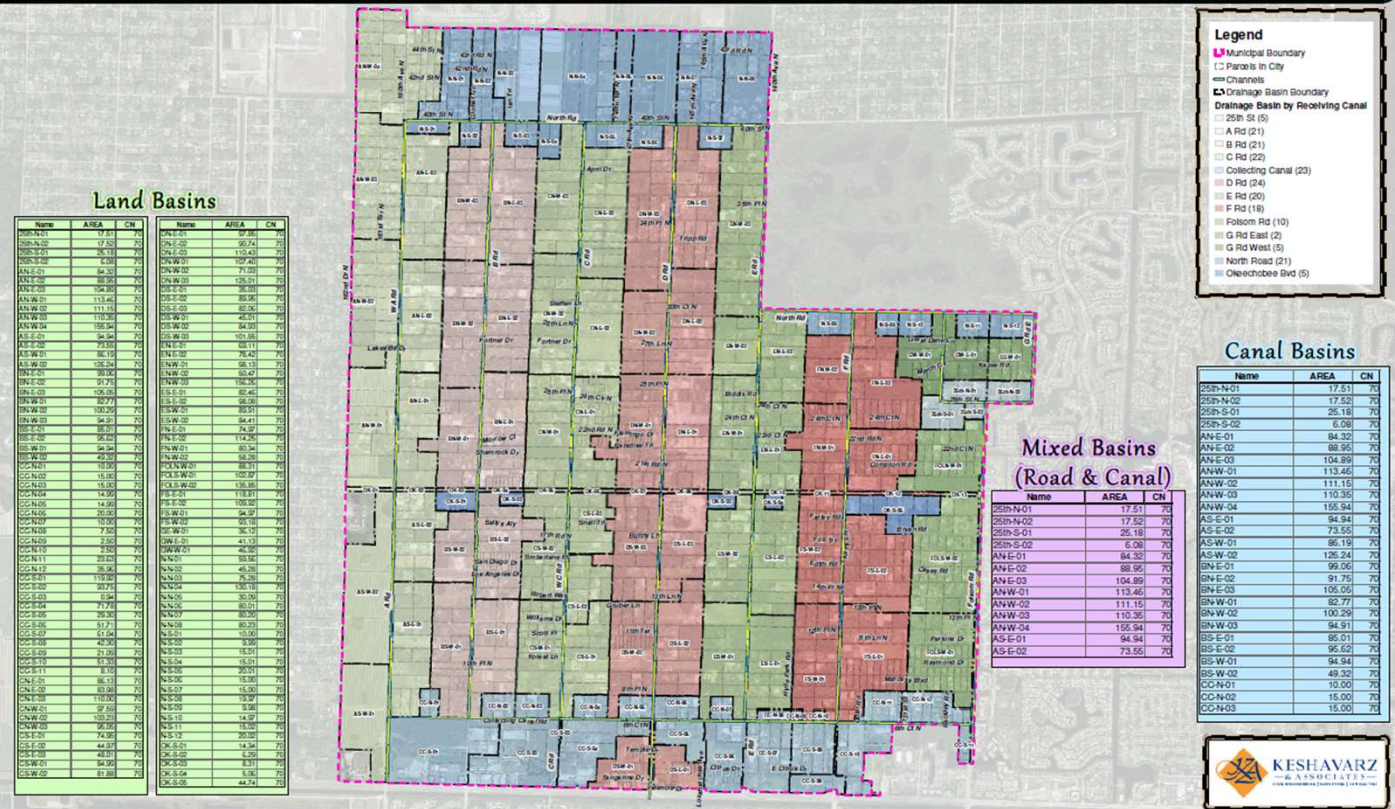


Town of Loxahatchee Groves Resilient Florida Surface Water Management System Assessment Drainage Basin Map

June 2024



1,300 Feet



Land Basins

Name	AREA	CN	Name	AREA	CN
25N-N01	17.51	70	25N-S01	25.18	70
25N-N02	17.52	70	25N-S02	25.18	70
25N-N03	25.18	70	25N-S03	25.18	70
25N-N04	15.00	70	25N-S04	15.00	70
25N-N05	15.00	70	25N-S05	15.00	70
25N-N06	15.00	70	25N-S06	15.00	70
25N-N07	15.00	70	25N-S07	15.00	70
25N-N08	15.00	70	25N-S08	15.00	70
25N-N09	15.00	70	25N-S09	15.00	70
25N-N10	15.00	70	25N-S10	15.00	70
25N-N11	15.00	70	25N-S11	15.00	70
25N-N12	15.00	70	25N-S12	15.00	70
25N-N13	15.00	70	25N-S13	15.00	70
25N-N14	15.00	70	25N-S14	15.00	70
25N-N15	15.00	70	25N-S15	15.00	70
25N-N16	15.00	70	25N-S16	15.00	70
25N-N17	15.00	70	25N-S17	15.00	70
25N-N18	15.00	70	25N-S18	15.00	70
25N-N19	15.00	70	25N-S19	15.00	70
25N-N20	15.00	70	25N-S20	15.00	70
25N-N21	15.00	70	25N-S21	15.00	70
25N-N22	15.00	70	25N-S22	15.00	70
25N-N23	15.00	70	25N-S23	15.00	70
25N-N24	15.00	70	25N-S24	15.00	70
25N-N25	15.00	70	25N-S25	15.00	70
25N-N26	15.00	70	25N-S26	15.00	70
25N-N27	15.00	70	25N-S27	15.00	70
25N-N28	15.00	70	25N-S28	15.00	70
25N-N29	15.00	70	25N-S29	15.00	70
25N-N30	15.00	70	25N-S30	15.00	70
25N-N31	15.00	70	25N-S31	15.00	70
25N-N32	15.00	70	25N-S32	15.00	70
25N-N33	15.00	70	25N-S33	15.00	70
25N-N34	15.00	70	25N-S34	15.00	70
25N-N35	15.00	70	25N-S35	15.00	70
25N-N36	15.00	70	25N-S36	15.00	70
25N-N37	15.00	70	25N-S37	15.00	70
25N-N38	15.00	70	25N-S38	15.00	70
25N-N39	15.00	70	25N-S39	15.00	70
25N-N40	15.00	70	25N-S40	15.00	70
25N-N41	15.00	70	25N-S41	15.00	70
25N-N42	15.00	70	25N-S42	15.00	70
25N-N43	15.00	70	25N-S43	15.00	70
25N-N44	15.00	70	25N-S44	15.00	70
25N-N45	15.00	70	25N-S45	15.00	70
25N-N46	15.00	70	25N-S46	15.00	70
25N-N47	15.00	70	25N-S47	15.00	70
25N-N48	15.00	70	25N-S48	15.00	70
25N-N49	15.00	70	25N-S49	15.00	70
25N-N50	15.00	70	25N-S50	15.00	70
25N-N51	15.00	70	25N-S51	15.00	70
25N-N52	15.00	70	25N-S52	15.00	70
25N-N53	15.00	70	25N-S53	15.00	70
25N-N54	15.00	70	25N-S54	15.00	70
25N-N55	15.00	70	25N-S55	15.00	70
25N-N56	15.00	70	25N-S56	15.00	70
25N-N57	15.00	70	25N-S57	15.00	70
25N-N58	15.00	70	25N-S58	15.00	70
25N-N59	15.00	70	25N-S59	15.00	70
25N-N60	15.00	70	25N-S60	15.00	70
25N-N61	15.00	70	25N-S61	15.00	70
25N-N62	15.00	70	25N-S62	15.00	70
25N-N63	15.00	70	25N-S63	15.00	70
25N-N64	15.00	70	25N-S64	15.00	70
25N-N65	15.00	70	25N-S65	15.00	70
25N-N66	15.00	70	25N-S66	15.00	70
25N-N67	15.00	70	25N-S67	15.00	70
25N-N68	15.00	70	25N-S68	15.00	70
25N-N69	15.00	70	25N-S69	15.00	70
25N-N70	15.00	70	25N-S70	15.00	70
25N-N71	15.00	70	25N-S71	15.00	70
25N-N72	15.00	70	25N-S72	15.00	70
25N-N73	15.00	70	25N-S73	15.00	70
25N-N74	15.00	70	25N-S74	15.00	70
25N-N75	15.00	70	25N-S75	15.00	70
25N-N76	15.00	70	25N-S76	15.00	70
25N-N77	15.00	70	25N-S77	15.00	70
25N-N78	15.00	70	25N-S78	15.00	70
25N-N79	15.00	70	25N-S79	15.00	70
25N-N80	15.00	70	25N-S80	15.00	70
25N-N81	15.00	70	25N-S81	15.00	70
25N-N82	15.00	70	25N-S82	15.00	70
25N-N83	15.00	70	25N-S83	15.00	70
25N-N84	15.00	70	25N-S84	15.00	70
25N-N85	15.00	70	25N-S85	15.00	70
25N-N86	15.00	70	25N-S86	15.00	70
25N-N87	15.00	70	25N-S87	15.00	70
25N-N88	15.00	70	25N-S88	15.00	70
25N-N89	15.00	70	25N-S89	15.00	70
25N-N90	15.00	70	25N-S90	15.00	70
25N-N91	15.00	70	25N-S91	15.00	70
25N-N92	15.00	70	25N-S92	15.00	70
25N-N93	15.00	70	25N-S93	15.00	70
25N-N94	15.00	70	25N-S94	15.00	70
25N-N95	15.00	70	25N-S95	15.00	70
25N-N96	15.00	70	25N-S96	15.00	70
25N-N97	15.00	70	25N-S97	15.00	70
25N-N98	15.00	70	25N-S98	15.00	70
25N-N99	15.00	70	25N-S99	15.00	70
25N-N100	15.00	70	25N-S100	15.00	70

Legend

- Municipal Boundary
- Parcels in City
- Channels
- Drainage Basin Boundary
- Drainage Basin by Receiving Canal
 - A Rd (21)
 - B Rd (21)
 - C Rd (22)
 - Collecting Canal (23)
 - D Rd (24)
 - E Rd (20)
 - F Rd (18)
 - Folsom Rd (10)
 - G Rd East (2)
 - G Rd West (5)
 - North Road (21)
 - Okeechobee Blvd (5)

Canal Basins

Name	AREA	CN
25N-N01	17.51	70
25N-N02	17.52	70
25N-S01	25.18	70
25N-S02	6.08	70
AN-E-01	84.32	70
AN-E-02	88.95	70
AN-E-03	104.89	70
ANW-01	113.45	70
ANW-02	111.16	70
ANW-03	110.35	70
ANW-04	155.94	70
AS-E-01	94.94	70
AS-E-02	73.55	70
AS-W-01	86.19	70
AS-W-02	126.24	70
AN-E-01	98.95	70
AN-E-02	91.75	70
AN-E-03	105.05	70
ANW-01	82.77	70
ANW-02	100.29	70
ANW-03	94.91	70
ANW-04	85.01	70
BS-E-02	96.02	70
BS-W-01	94.94	70
BS-W-02	49.32	70
CC-N-01	10.00	70
CC-N-02	15.00	70
CC-N-03	15.00	70

Mixed Basins (Road & Canal)

Name	AREA	CN
25N-N01	17.51	70
25N-N02	17.52	70
25N-S01	25.18	70
25N-S02	6.08	70
AN-E-01	84.32	70
AN-E-02	88.95	70
AN-E-03	104.89	70
ANW-01	113.45	70
ANW-02	111.15	70
ANW-03	110.35	70
ANW-04	155.94	70
AS-E-01	94.94	70
AS-E-02	73.55	70





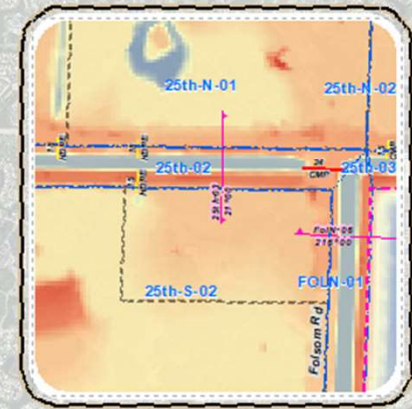
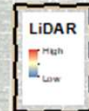
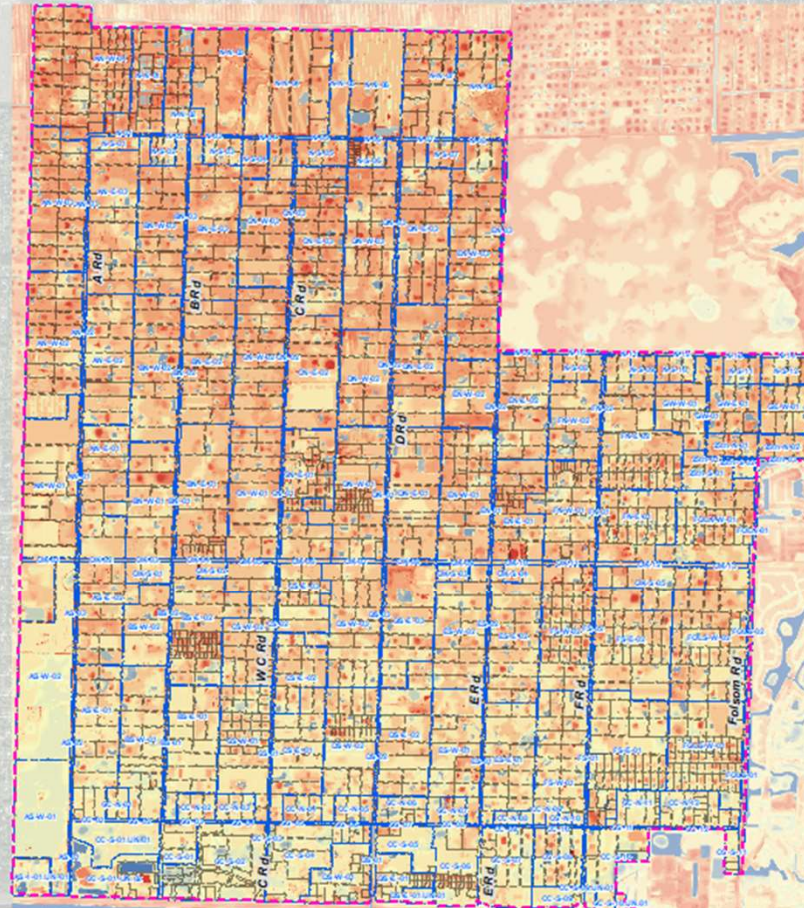
Town of Loxahatchee Groves Resilient Florida Surface Water Management System Assessment

September 2024



1400 Feet

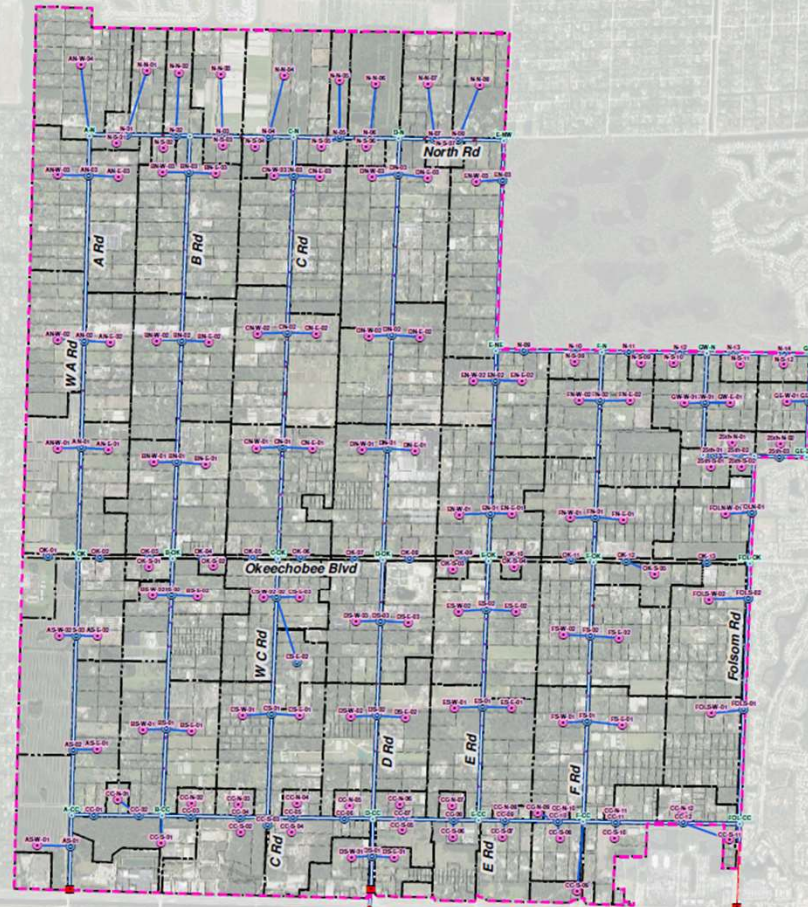
LiDAR Topography and Basin Boundaries





Town of Loxahatchee Groves Resilient Florida Surface Water Management System Assessment Node Diagram

September 2024



- Legend**
- Municipal Boundary
 - Parcels In City
 - Drainage Basin Boundary
 - Channels
 - Node Types**
 - Drainage Basin Stage-Storage
 - Canal Stage-Storage
 - Confluence
 - Pipe Entrance
 - Pipe Exit
 - Outfall
 - Outfall Control Structure
 - Pipes Main Channels**
 - Roadway Culvert
 - Driveway Culvert
 - Connection
 - Connection (Okeechobee Blvd)
 - Outfall Culvert



Looking Ahead...

- Public Outreach Meeting No. 1 – October 17 & 19
- Steering Committee Meeting No. 2 – November

Benefits

- Supports funding requests under Resilient Florida Implementation Grants
- Provides crucial technical background required for many other drainage and agency grants
- Informs future SFWMD permitting of updates and upgrades
- Accounts for floodplain impacts in proposed designs
- Compliance with Federal NPDES requirements
- Potential to simplify permitting for residents

Operational Savings

- Capital Improvement Planning/ Budgetary forecasting
- Inventory for scheduling inspections, cleanings and replacements
- Evaluate performance of improvements before buying
- Future rate adjustments
- Area-specific improvements
- Intelligent mapping of easements and works of the Town and District