



03/06/2024

Revised 6/14/2024

Licensed Arborist - William Smith
WE-13625A

Contact Information - (408) 722-8942
Smithtreespecialists@gmail.com

Arborist Report

Client: Live Oak Associates - Attention: Katrina Krakow

Site: 50 Los Gatos-Saratoga Rd, Los Gatos CA

As per your request, Moki Smith Tree Specialists surveyed the site at 50 Los Gatos - Saratoga road CA, to identify and assess the trees greater than 6” in trunk diameter at breast height, located on the subject property. There are 330 trees included in this report, documented on the subject property or on adjacent property lots where the canopies extend into the subject property. Many of the trees on site are located around the perimeter and are often contacting the chainlink fence that sits on the property line. Most of the substantial trees listed are Eucalyptus trees, Coastal Live Oak trees, Deodar Cedar trees, or Liquid Ambar trees. The trees on the interior of the property are, for the most part, in fair to good condition. Of the 330 trees, 189 are considered protected trees by the Town of Los Gatos, under the size ordinance. There are 73 trees catalogued on the hill at the South, East side of the property. The majority of the hillside trees are Coastal Live Oaks that range from poor to good condition.

Please feel free to call for further clarification.

Respectfully submitted,

Moki Smith

Table of Contents

Introduction	Page 1
Tree Inventory table	Page 3
Tree Assessments and Pictures	Page 19
Site Map	Page 180
Protected Tree Ordinance	Page 181
Tree Protection Measures	Page 182
City Ordinances	Page 183
Arborist Report Addendum	Page 188
Addendum Tree Inventory	Page 189
Addendum Tree Assessments and Pictures	Page 194
Addendum Site Mape	Page 229

Tree Survey

We surveyed for all trees 6” or larger, however to meet the requirements of the Tree Ordinance of protected trees, an an addendum has been included to provide the information of the trees with a D.B.H. of 4”-6”. The addendum begins on page 189.

Protected trees in the above table are designated referencing Sec. 29.10.0960 Scope of protected trees, of the city ordinance for Los Gatos.

Refer to line 7

“...All trees, which have a four-inch or greater diameter (twelve and one half-inch circumference) of any trunk and are located on property **other than developed residential property.**”

Tree Tag ID	Common Name	Species	D.B.H. (Inches)	Height (In Feet)	Crown Spread (In Feet)	Condition	Protected
4801	Coast Live Oak	Quercus agrifolia	14	28	28	Good	Protected
4802	Blue Gum Eucalyptus	Eucalyptus globulus	18	34	20	Fair	Exempt
4803	Coast Live Oak	Quercus agrifolia	14	35	32	Good	Protected
4804	Blue Gum Eucalyptus	Eucalyptus globulus	9	44	9	Fair	Exempt
4805	Eucalyptus nicholii	Eucalyptus nicholii	24	42	33	Good	Protected
4806	Eucalyptus nicholii	Eucalyptus nicholii	18	35	29	Fair	Exempt
4807	Eucalyptus nicholii	Eucalyptus nicholii	17	25	27	Fair	Exempt
4808	Eucalyptus nicholii	Eucalyptus nicholii	18	35	33	Fair	Exempt
4809	Eucalyptus nicholii	Eucalyptus nicholii	30	57	38	Good	Protected
4810	Blue Gum Eucalyptus	Eucalyptus globulus	8	40	15	Fair	Exempt
4811	Eucalyptus nicholii	Eucalyptus nicholii	19	40	25	Good	Exempt
4812	Texas Privet Tree	Ligustrum japonicum 'texanum'	Multi - 5" 3" 4"	40	19	Fair	Exempt
4813	American Sycamore	Platanus occidentalis	15	55	22	Fair	Protected
4814	American Sycamore	Platanus occidentalis	14	45	25	Fair	Protected
4815	Eucalyptus nicholii	Eucalyptus nicholii	23	42	38	Fair	Exempt
4816	Coast Live Oak	Quercus agrifolia	9	24	13	Fair	Protected
4817	Eucalyptus nicholii	Eucalyptus nicholii	27	55	50	Good	Protected
4818	Eucalyptus	Eucalyptus (sp)	20	52	35	Good	Exempt

4819	Eucalyptus nicholii	Eucalyptus nicholii	38	50	40	Good	Protected
4820	Flowering Pear Tree	Pyrus calleryana	6	18	8	Fair	Exempt
4821	Coast Live Oak	Quercus agrifolia	10	25	18	Good	Protected
4822	Blue Gum Eucalyptus	Eucalyptus globulus	17	60	25	Good	Exempt
4823	Coast Live Oak	Quercus agrifolia	22	50	38	Good	Protected
4824	Blue Gum Eucalyptus	Eucalyptus globulus	9	47	9	Good	Exempt
4825	Coast Live Oak	Quercus agrifolia	10	35	18	Good	Protected
4826	Coast Live Oak	Quercus agrifolia	14	38	27	Fair	Large Protected
4827	Coast Live Oak	Quercus agrifolia	13	45	35	Good	Protected
4828	Coast Live Oak	Quercus agrifolia	24	50	40	Good	Large Protected
4829	Mexican Fan Palm	Washingtonia robusta	14	58	9	Good	Exempt
4830	Mexican Fan Palm	Washingtonia robusta	16	65	10	Good	Exempt
4831	Mexican Fan Palm	Washingtonia robusta	12	48	7	Good	Exempt
4832	Coast Live Oak	Quercus agrifolia	Multi - 12" 6" 5" 4"	39	34	Good	Large Protected
4833	Valley Oak	Quercus lobata	9	42	21	Good	Protected
4834	Mexican Fan Palm	Washingtonia robusta	11	19	6	Good	Exempt
4835	Deodar Cedar	Cedrus deodara	10	45	32	Good	Protected
4836	Redwood	Sequoia sempervirens	14	33	18	Dead	Protected
4837	Redwood	Sequoia sempervirens	Multi- 10" 7"	44	17	Good	Protected
4838	Redwood	Sequoia sempervirens	7	33	10	Good	Protected
4839	Redwood	Sequoia sempervirens	30	65	25	Fair	Protected

4840	Deodar Cedar	Cedrus deodara	12	48	14	Good	Protected
4841	Redwood	Sequoia sempervirens	18	65	27	Fair	Protected
4842	Redwood	Sequoia sempervirens	18	70	30	Good	Protected
4843	Pepper Tree	Schinus molle	27	25	22	Very Poor	Protected
4844	Coast Live Oak	Quercus agrifolia	36	62	56	Good	Large Protected
4845	Coast Live Oak	Quercus agrifolia	17	45	21	Fair	Protected
4846	Coast Live Oak	Quercus agrifolia	16	45	27	Fair	Protected
4847	Coast Live Oak	Quercus agrifolia	Multi-17" 16"	45	43	Fair	Large Protected
4848	Coast Live Oak	Quercus agrifolia	18	37	32	Fair	Protected
4849	Deodar Cedar	Cedrus deodara	19	50	31	Good	Protected
4850	Olive Tree	Olea europaea	Multi - 7" 6" 6" 4"	24	30	Fair	Protected
4851	English Walnut Tree	Juglans regia	11	45	35	Fair	Protected
4852	Coast Live Oak	Quercus agrifolia	12	48	35	Fair	Protected
4853	Coast Live Oak	Quercus agrifolia	20	43	28	Fair	Protected
4854	Redwood	Sequoia sempervirens	14	50	28	Good	Protected
4855	Blue Gum Eucalyptus	Eucalyptus globulus	28	28	12	Poor	Protected
4856	Blue Gum Eucalyptus	Eucalyptus globulus	28	34	18	Poor	Protected
4857	Blue Gum Eucalyptus	Eucalyptus globulus	12	23	14	Fair	Exempt
4858	Deodar Cedar	Cedrus deodara	12	53	22	Good	Protected
4859	Deodar Cedar	Cedrus deodara	14	65	33	Good	Protected
4860	Deodar Cedar	Cedrus deodara	15	70	40	Good	Protected
4861	Deodar Cedar	Cedrus deodara	11	31	13	Fair	Protected
4862	Stone Pine	Pinus pinea	13	35	27	Good	Protected

4863	Deodar Cedar	Cedrus deodara	8	32	24	Good	Protected
4864	Deodar Cedar	Cedrus deodara	13	44	35	Good	Protected
4865	Deodar Cedar	Cedrus deodara	27	65	40	Good	Protected
4866	Deodar Cedar	Cedrus deodara	6	21	10	Good	Protected
4867	Deodar Cedar	Cedrus deodara	6	22	11	Good	Protected
4868	Redwood	Sequoia sempervirens	8	22	13	Good	Protected
4869	Redwood	Sequoia sempervirens	7	22	11	Fair	Protected
4870	Stone Pine	Pinus pinea	6	27	10	Good	Protected
4871	Deodar Cedar	Cedrus deodara	21	65	41	Good	Protected
4872	Olive	Olea europaea	Multi- 9" 10"	22	23	Poor	Protected
4873	Coast Live Oak	Quercus agrifolia	11	33	25	Good	Protected
4874	Coast Live Oak	Quercus agrifolia	8	33	11	Good	Protected
4875	Coast Live Oak	Quercus agrifolia	20	52	27	Fair	Protected
4876	Coast Live Oak	Quercus agrifolia	16	55	32	Fair	Protected
4877	Coast Live Oak	Quercus agrifolia	50	55	55	Good	Large Protected
4878	Blue Atlas Cedar	Cedrus atlantica 'Glauca'	10	40	20	Good	Protected
4879	Stone Pine	Pinus pinea	16	48	36	Good	Protected
4880	Blue Gum Eucalyptus	Eucalyptus globulus	23	65	35	Fair	Exempt
4881	Blue Gum Eucalyptus	Eucalyptus globulus	14	53	37	Good	Exempt
4882	Blue Gum Eucalyptus	Eucalyptus globulus	16	65	22	Fair	Exempt
4883	Eucalyptus nicholii	Eucalyptus nicholii	33	70	45	Good	Protected
4884	Blue Gum Eucalyptus	Eucalyptus globulus	37	73	50	Good	Protected
4885	Coast Live Oak	Quercus agrifolia	10	37	28	Good	Protected
4886	Coast Live Oak	Quercus agrifolia	11	40	30	Poor	Protected

4887	Coast Live Oak	Quercus agrifolia	33	64	55	Good	Large Protected
4888	Coast Live Oak	Quercus agrifolia	24	65	41	Good	Large Protected
4889	Coast Live Oak	Quercus agrifolia	11	27	23	Fair	Protected
4890	Coast Live Oak	Quercus agrifolia	Multi - 10" 8"	33	25	Good	Protected
4891	Coast Live Oak	Quercus agrifolia	27	55	30	Good	Large Protected
4892	Eucalyptus nicholii	Eucalyptus nicholii	Multi - 21" 19"	65	50	Fair	Protected
4893	Blue Gum Eucalyptus	Eucalyptus globulus	17	65	33	Fair	Exempt
4894	Black Walnut	Juglans nigra	38	50	40	Poor	Protected
4895	Plum Pine	<i>Podocarpus macrophyllus</i>	7	18	13	Good	Protected
4896	Plum Pine	<i>Podocarpus macrophyllus</i>	8	22	7	Good	Protected
4897	Loquat	Eriobotrya japonica	Multi - 7" 9"	45	30	Good	Exempt
4898	Plum Pine	<i>Podocarpus macrophyllus</i>	8	18	7	Good	Protected
4899	Plum Pine	<i>Podocarpus macrophyllus</i>	9	18	8	Good	Protected
4900	Plum Pine	<i>Podocarpus macrophyllus</i>	8	20	9	Good	Protected
4901	Plum Pine	<i>Podocarpus macrophyllus</i>	7	20	9	Good	Protected
4902	Plum Pine	<i>Podocarpus macrophyllus</i>	7	20	9	Good	Protected
4903	Plum Pine	<i>Podocarpus macrophyllus</i>	5	20	7	Good	Protected
4904	Olive	Olea europaea	12	14	10	Fair	Protected
4905	Blue Gum Eucalyptus	Eucalyptus globulus	Multi- 37" 41"	80	67	Good	Large Protected
4906	Olive	Olea europaea	Multi - 7" 6"	12	9	Fair	Protected
4907	Purple leaf Plum	Prunus cerasifera	Multi - 10" 13" 11"	34	38	Fair	Exempt
4908	Common Privet	Ligustrum vulgare	13	22	23	Good	Exempt
4909	Purple Leaf Plum	Prunus cerasifera	Multi - 8" 7"	32	23	Very Poor	Exempt
4910	Purple Leaf Plum	Prunus cerasifera	11	36	20	Very Poor	

4911	Silver Dollar Eucalyptus	Eucalyptus polyanthemus	27	47	39	Good	Protected
4912	Blue Gum Eucalyptus	Eucalyptus globulus	35	60	40	Good	Protected
4913	Plum Pine	Podocarpus macrophyllus	9	28	11	Good	Exempt
4914	Silver Dollar Eucalyptus	Eucalyptus polyanthemus	40	60	45	Good	Protected
4915	Stone Pine	Pinus pinea	24	60	47	Good	Protected
4916	Stone Pine	Pinus pinea	23	70	30	Fair	Protected
4917	Loquat	Eriobotrya japonica	8	24	9	Fair	Exempt
4918	Loquat	Eriobotrya japonica	8	26	12	Fair	Exempt
4919	Loquat	Eriobotrya japonica	8	26	11	Fair	Exempt
4920	Loquat	Eriobotrya japonica	6	21	10	Fair	Exempt
4921	Scarlet Firethorn	Pyracantha coccinea	5	17	7	Fair	Protected
4922	Magnolia	Magnolia grandiflora	25	42	40	Fair	Protected
4923	Persian Silk Tree	Albizia julibrissin	11	38	33	Good	Protected
4924	Black Walnut	Juglans nigra	28	45	35	Fair	Protected
4925	Stone Pine	Pinus pinea	35	85	37	Good	Protected
4926	Stone Pine	Pinus pinea	28	80	35	Fair	Protected
4927	Chinese Pistache	Pistacia chinensis	12	48	37	Good	Protected
4928	Chinese Pistache	Pistacia chinensis	12	50	40	Good	Protected
4929	Chinese Pistache	Pistacia chinensis	8	22	14	Good	Protected
4930	Chinese Pistache	Pistacia chinensis	6	21	19	Good	Protected
4931	Chinese Pistache	Pistacia chinensis	6	12	11	Good	Protected
4932	Chinese Pistache	Pistacia chinensis	6	23	17	Good	Protected
4933	Chinese Pistache	Pistacia chinensis	10	23	12	Good	Protected
4934	Chinese Pistache	Pistacia chinensis	6	23	12	Good	Protected

4935	Chinese Pistache	Pistacia chinensis	6	21	14	Good	Protected
4936	Chinese Pistache	Pistacia chinensis	11	26	22	Good	Protected
4937	Olive	Olea europaea	10	14	9	Fair	Protected
4938	Olive	Olea europaea	Multi - 6" 4" 4"	14	11	Fair	Protected
4939	Olive	Olea europaea	11	16	10	Fair	Protected
4940	Olive	Olea europaea	Multi - 6" 5" 5"	17	11	Fair	Protected
4941	Olive	Olea europaea	8	10	6	Fair	Protected
4942	Black Walnut	Juglans nigra	14	42	39	Fair	Protected
4943	Black Walnut	Juglans nigra	14	42	35	Fair	Protected
4944	Monterey Cypress	Hesperocyparis macrocarpa	Multi - 8" 16" 16"	25	40	Good	Protected
4945	Monterey Cypress	Hesperocyparis macrocarpa	20	20	28	Good	Protected
4946	Smoke Tree	Cotinus coggygria	Multi - 8" 9" 6"	11	19	Fair	Protected
4947	Saucer Magnolia	Magnolia X soulangeana	Multi - 6" 5" 4"	19	13	Fair	Protected
4948	Persian Silk Tree	Albizia julibrissin	21	20	23	Fair	Protected
4949	Mexican Fan Palm	Washingtonia robusta	18	55	10	Good	Protected
4950	Mexican Fan Palm	Washingtonia robusta	8	23	9	Good	Protected
4951	Mexican Fan Palm	Washingtonia robusta	9	31	9	Good	Protected
4952	Mexican Fan Palm	Washingtonia robusta	6	38	8	Good	Protected
4953	Silver Maple	Acer saccharinum	6	45	13	Good	Protected
4954	Magnolia	Magnolia grandiflora	8	41	27	Good	Protected
4955	Silver Dollar Eucalyptus	Eucalyptus polyanthemos	20	70	33	Fair	Protected
4956	Magnolia	Magnolia grandiflora	6	30	13	Fair	Protected
4957	Modesto Ash	Fraxinus velutina	25	58	42	Good	Protected

4958	Crape Myrtle	Lagerstroemia	Multi - 4" 4" 4" 5"	22	19	Good	Protected
4959	Crape Myrtle	Lagerstroemia	8	20	18	Good	Protected
4960	Crape Myrtle	Lagerstroemia	7	20	12	Good	Protected
4961	Crape Myrtle	Lagerstroemia	Mutli - 6" 5" 3" 4"	21	11	Good	Protected
4962	Black Walnut	Juglans nigra	8	13	10	Good	Exempt
4963	Mexican Fan Palm	Washingtonia robusta	22	73	10	Good	Exempt
4964	Mexican Fan Palm	Washingtonia robusta	13	60	10	Good	Exempt
4965	Mexican Fan Palm	Washingtonia robusta	14	64	10	Good	Exempt
4966	Mexican Fan Palm	Washingtonia robusta	15	66	10	Good	Exempt
4967	Mexican Fan Palm	Washingtonia robusta	15	55	11	Good	Exempt
4968	Sweetgum	Liquidambar styraciflua	22	65	29	Good	Protected
4969	Sweetgum	Liquidambar styraciflua	12	55	21	Good	Protected
4970	Sweetgum	Liquidambar styraciflua	13	63	23	Good	Protected
4971	Sweetgum	Liquidambar styraciflua	7	38	10	Good	Protected
4972	Sweetgum	Liquidambar styraciflua	17	45	19	Good	Protected
4973	Sweetgum	Liquidambar styraciflua	16	48	17	Good	Protected
4974	Sweetgum	Liquidambar styraciflua	13	48	8	Good	Protected
4975	Sweetgum	Liquidambar styraciflua	13	48	8	Fair	Protected
4976	Sweetgum	Liquidambar styraciflua	11	47	9	Poor	Protected
4977	Sweetgum	Liquidambar styraciflua	8	38	12	Good	Protected

4978	Sweetgum	Liquidambar styraciflua	12	41	22	Good	Protected
4979	Sweetgum	Liquidambar styraciflua	18	51	31	Good	Protected
4980	Japanese Maple	Acer palmatum	10	23	20	Poor	Protected
4981	Loquat	Eriobotrya japonica	10	31	18	Fair	Exempt
4982	Deodar Cedar	Cedrus deodara	Multi - 34" 25"	75	45	Good	Protected
4983	Lemon Tree	Citrus Limon	Multi - 10" 4"	27	23	Good	Exempt
4984	Coast Live Oak	Quercus agrifolia	11	29	18	Good	Protected
4985	Mexican Fan Palm	Washingtonia robusta	14	45	9	Good	Exempt
4986	Brisbane Box	Lophostemon confertus	Multi - 8" 8"	36	24	Fair	Protected
4987	Saucer Magnolia	Magnolia X soulangeana	Multi - 9" 12"	35	26	Fair	Protected
4988	Coast Live Oak	Quercus agrifolia	15	44	41	Good	Protected
4989	Loquat	Eriobotrya japonica	Multi - 6" 5"	23	11	Fair	Exempt
4990	Monterey Cypress	Hesperocyparis macrocarpa	7	21	13	Fair	Protected
4991	Silver Dollar Eucalyptus	Eucalyptus polyanthemos	24	71	26	Fair	Protected
4992	Deodar Cedar	Cedrus deodara	13	55	31	Fair	Protected
4993	Monterey Cypress	Hesperocyparis macrocarpa	Multi - 7" 19" 10" 7"	36	27	Fair	Protected
4994	Monterey Cypress	Hesperocyparis macrocarpa	Multi - 10" 6" 13"	38	24	Fair	Protected
4995	Monterey Cypress	Hesperocyparis macrocarpa	10	28	10	Fair	Protected
4996	Deodar Cedar	Cedrus deodara	15	58	32	Fair	Protected
4997	Deodar Cedar	Cedrus deodara	16	52	34	Fair	Protected
4998	Deodar Cedar	Cedrus deodara	16	57	34	Fair	Protected

4999	Deodar Cedar	Cedrus deodara	16	54	38	Fair	Protected
5000	Canary Island Date Palm	Phoenix canariensis	32	22	21	Good	Protected
5001	Deodar Cedar	Cedrus deodara	20	64	42	Good	Protected
5002	Sugar Pine	Pinus lambertiana	18	64	42	Good	Protected
5003	Sugar Pine	Pinus lambertiana	13	49	17	Good	Protected
5004	Sugar Pine	Pinus lambertiana	14	42	22	Fair	Protected
5005	Canary Island Date Palm	Phoenix canariensis	24	13	16	Good	Protected
5006	Coast Live Oak	Quercus agrifolia	Multi - 30" 25"	52	48	Fair	Large Protected
5007	Coast Live Oak	Quercus agrifolia	Multi - 5" 6" 4"	39	26	Poor	Protected
5008	Coast Live Oak	Quercus agrifolia	Muti - 11" 9"	41	35	Fair	Protected
5009	Coast Live Oak	Quercus agrifolia	11	30	28		Protected
5010	Mulberry	Morus alba	10	22	25	Fair	Protected
5011	Coast Live Oak	Quercus agrifolia	7	13	12	Poor	Protected
5012	Coast Live Oak	Quercus agrifolia	14	41	37	Fair	Protected
5013	Mulberry	Morus alba	Multi - 6" 4"	22	23	Poor	Protected
5014	Mulberry	Morus alba	6	11	10	Poor	Protected
5015	Coast Live Oak	Quercus agrifolia	16	55	35	Fair	Protected
5016	Coast Live Oak	Quercus agrifolia	Multi - 6" 8"	43	33	Fair	Protected
5017	Coast Live Oak	Quercus agrifolia	16	43	37	Fair	Protected
5018	Blue Atlas Cedar	Cedrus atlantica 'Glauca'	6	18	18	Good	Protected
5019	Blue Atlas Cedar	Cedrus atlantica 'Glauca'	6	13	17	Good	Protected
5020	Redwood	Sequoia sempervirens	10	34	15	Fair	Protected

5021	Mexican Fan Palm	Washingtonia robusta	Multi - 14" 13" 13" 14"	68	12	Good	Exempt
5022	Mexican Fan Palm	Washingtonia robusta	13	60	14	Good	Exempt
5023	Mexican Fan Palm	Washingtonia robusta	13	52	11	Good	Exempt
5024	Mexican Fan Palm	Washingtonia robusta	14	59	11	Good	Exempt
5025	Persimmon	Diospyros kaki	7	20	27	Good	Exempt
5026	Loquat	Eriobotrya japonica	Multi - 5" 6" 6" 5"	22	24	Good	Exempt
5027	Purple Leaf Plum	Prunus cerasifera	Multi - 5" 3" 4" 3"	17	9	Dead	Exempt
5028	Purple Leaf Plum	Prunus cerasifera	Multi - 8" 7"	21	14	Very Poor	Exempt
5029	Coast Live Oak	Quercus agrifolia	8	24	12	Poor	Protected
5030	Mulberry	Morus alba	Multi - 5" 9"	25	21	Good	Protected
5031	Coast Live Oak	Quercus agrifolia	Multi - 8" 9" 7"	34	23	Fair	Protected
5032	Mulberry	Morus alba	8	13	11	Poor	Protected
5033	Canary Island Date Palm	Phoenix canariensis	32	35	28	Good	Protected
5034	Coast Live Oak	Quercus agrifolia	10	12	21	Fair	Protected
5035	Sweetgum	Liquidambar Styraciflua	14	34	38	Poor	Protected
5036	Deodar Cedar	Cedrus deodara	28	61	47	Good	Protected
5037	Italian Cypress	Cupressus sempervirens	9	28	5	Dead	Protected
5038	Italian Cypress	Cupressus sempervirens	11	43	5	Good	Protected
5039	Italian Cypress	Cupressus sempervirens	11	41	5	Good	Protected
5040	Camphor	Cinnamomum camphora	13	37	28	Fair	Protected
5041	Camphor	Cinnamomum camphora	7	28	11	Fair	Protected

5042	Camphor	Cinnamomum camphora	7	25	10	Fair	Protected
5043	Purple Leaf Plum	Prunus cerasifera	6	20	6	Very Poor	Exempt
5044	Texas Privet	Ligustrum japonicum 'texanum'	14	46	23	Poor	Exempt
5045	Ironbark Eucalyptus	Eucalyptus sideroxylon	20	44	30	Poor	Exempt
5046	Camphor	Cinnamomum camphora	6	16	13	Good	Protected
5047	Coast Live Oak	Quercus agrifolia	Multi - 7" 7"	13	13	Good	Protected
5048	Bluegum Eucalyptus	Eucalyptus globulus	15	33	26	Good	Exempt
5049	Bluegum Eucalyptus	Eucalyptus globulus	21	44	31	Good	Exempt
5050	Ironbark Eucalyptus	Eucalyptus sideroxylon	9	38	19	Fair	Exempt
5051	Coast Live Oak	Quercus agrifolia	16	37	26	Fair	Protected
5052	Coast Live Oak	Quercus agrifolia	29	55	52	Good	Large Protected
5053	Canary Island Date Palm	Phoenix canariensis	24	50	22	Poor	Protected
5054	Coast Live Oak	Quercus agrifolia	19	60	45	Good	Protected
5055	Coast Live Oak	Quercus agrifolia	17	45	22	Fair	Protected
5056	Coast Live Oak	Quercus agrifolia	11	50	20	Good	Protected
5057	Coast Live Oak	Quercus agrifolia	12	45	28	Fair	Protected
5058	Coast Live Oak	Quercus agrifolia	13	55	35	Good	Protected
5059	Coast Live Oak	Quercus agrifolia	18	40	35	Fair	Protected
5060	Coast Live Oak	Quercus agrifolia	Multi - 16" 8" 9"	30	27	Good	Large Protected
5061	Olive	Olea europaea	10	27	19	Good	Protected
5062	Coast Live Oak	Quercus agrifolia	10	38	30	Fair	Protected

5063	Coast Live Oak	Quercus agrifolia	Multi - 19" 17"	55	60	Fair	Large protected
5064	Coast Live Oak	Quercus agrifolia	11	48	31	Fair	Protected
5065	Coast Live Oak	Quercus agrifolia	14	50	38	Fair	Protected
5066	Coast Live Oak	Quercus agrifolia	24	55	40	Fair	Protected
5067	Coast Live Oak	Quercus agrifolia	16	57	32	Fair	Protected
5068	Coast Live Oak	Quercus agrifolia	14	60	40	Fair	Protected
5069	Coast Live Oak	Quercus agrifolia	15	50	30	Good	Protected
5070	Coast Live Oak	Quercus agrifolia	20	80	50	Fair	Protected
5071	Coast Live Oak	Quercus agrifolia	Multi - 9" 5" 4"	32	31	Fair	Protected
5072	Coast Live Oak	Quercus agrifolia	10	60	20	Fair	Protected
5073	Deodar Cedar	Cedrus deodara	9	55	17	Fair	Protected
5074	Coast Live Oak	Quercus agrifolia	10	48	30	Fair	Protected
5075	Coast Live Oak	Quercus agrifolia	8	30	25	Fair	Protected
5076	Deodar Cedar	Cedrus deodara	22	75	47	Fair	Protected
5077	Coast Live Oak	Quercus agrifolia	20	48	39	Fair	Protected
5078	Coast Live Oak	Quercus agrifolia	10	24	18	Fair	Protected
5079	Coast Live Oak	Quercus agrifolia	20	60	40	Fair	Protected
5080	Coast Live Oak	Quercus agrifolia	7	25	11	Fair	Protected
5081	Coast Live Oak	Quercus agrifolia	18	45	35	Fair	Protected
5082	Coast Live Oak	Quercus agrifolia	Multi - 8" 14"	45	37	Fair	Large Protected

5083	Deodar Cedar	Cedrus deodara	22	65	40	Poor	Protected
5084	Coast Live Oak	Quercus agrifolia	18	48	30	Fair	Protected
5085	Coast Live Oak	Quercus agrifolia	11	38	28	Fair	Protected
5086	Coast Live Oak	Quercus agrifolia	Multi - 12" 11" 14"	40	55	Fair	Large Protected
5087	Coast Live Oak	Quercus agrifolia	Multi - 15" 7"	48	35	Fair	Protected
5088	Coast Live Oak	Quercus agrifolia	12	40	22	Good	Protected
5089	Coast Live Oak	Quercus agrifolia	Multi - 7" 8"	40	34	Fair	Protected
5090	Coast Live Oak	Quercus agrifolia	13	45	22	Fair	Protected
5091	Coast Live Oak	Quercus agrifolia	16	38	30	Good	Protected
5092	Coast Live Oak	Quercus agrifolia	11	38	25	Good	Protected
5093	Coast Live Oak	Quercus agrifolia	16	50	35	Fair	Protected
5094	Coast Live Oak	Quercus agrifolia	13	45	28	Fair	Protected
5095	Coast Live Oak	Quercus agrifolia	Multi - 38" 19" 28"	60	55	Fair	Large Protected
5096	Coast Live Oak	Quercus agrifolia	17	42	38	Fair	Protected
5097	Coast Live Oak	Quercus agrifolia	15	45	38	Good	Protected
5098	Coast Live Oak	Quercus agrifolia	32	55	65	Good	Large Protected
5099	Coast Live Oak	Quercus agrifolia	12	30	25	Poor	Protected
5100	Coast Live Oak	Quercus agrifolia	11	28	18	Poor	Protected
5101	Coast Live Oak	Quercus agrifolia	12	36	20	Poor	Protected
5102	Coast Live Oak	Quercus agrifolia	11	34	20	Poor	Protected
5103	Coast Live Oak	Quercus agrifolia	17	40	24	Poor	Protected

5104	Coast Live Oak	Quercus agrifolia	14	28	17	Poor	Large Protected
5105	Coast Live Oak	Quercus agrifolia	18	44	23	Fair	Large Protected
5106	Coast Live Oak	Quercus agrifolia	16	40	28	Fair	Protected
5107	Coast Live Oak	Quercus agrifolia	Multi - 9" 15" 6"	40	28	Fair	Large Protected
5108	Coast Live Oak	Quercus agrifolia	19	46	37	Fair	Protected
5109	Coast Live Oak	Quercus agrifolia	20	55	39	Fair	Protected
5110	Coast Live Oak	Quercus agrifolia	13	38	27	Fair	Protected
5111	Coast Live Oak	Quercus agrifolia	14	45	30	Fair	Protected
5112	Coast Live Oak	Quercus agrifolia	13	44	36	Fair	Protected
5113	Coast Live Oak	Quercus agrifolia	26	55	50	Fair	Large Protected
5114	Coast Live Oak	Quercus agrifolia	16	50	30	Fair	Protected
5115	Coast Live Oak	Quercus agrifolia	36	65	60	Fair	Large Protected
5116	Coast Live Oak	Quercus agrifolia	17	50	40	Fair	Protected
5117	Coast Live Oak	Quercus agrifolia	15	50	38	Fair	Protected
5118	Coast Live Oak	Quercus agrifolia	16	40	40	Fair	Protected
5119	Coast Live Oak	Quercus agrifolia	10	40	25	Fair	Protected
5120	Coast Live Oak	Quercus agrifolia	12	40	18	Fair	Protected
5121	Coast Live Oak	Quercus agrifolia	18	38	25	Fair	Protected
5122	Coast Live Oak	Quercus agrifolia	17	35	20	Fair	Protected
5123	Coast Live Oak	Quercus agrifolia	22	46	37	Fair	Protected
5124	Coast Live Oak	Quercus agrifolia	10	20	12	Dead	Protected

5125	Coast Live Oak	Quercus agrifolia	15	45	35	Fair	Protected
5126	Coast Live Oak	Quercus agrifolia	15	42	38	Fair	Protected
5127	Coast Live Oak	Quercus agrifolia	12	38	27	Fair	Protected
5128	Coast Live Oak	Quercus agrifolia	Multi - 14" 14"	42	37	Fair	Large Protected
5129	Coast Live Oak	Quercus agrifolia	19	50	40	Fair	Protected
5130	Coast Live Oak	Quercus agrifolia	Multi 7" 9"	37	30	Fair	Protected

Assessment by tag number

Tag 4801: Tree is located on a grade at the property line.



Tag 4802: Substantial rot in first main crotch
Significant lean - potential to upright failure



Tag 4803: Located on property line
Girdling around base due to chain link fence



Tag 4804: No foliage until upper canopy due to growing amongst live oak and eucalyptus. Significant vertical growth to obtain light over neighboring trees



Tag 4805: Canopy leaning north west due to competition for light.
Located on fenceline.
Crossing limbs and merging canopies with neighboring trees.



Tag 4806: Canopy leaning north west due to competition for light.
Located on fenceline.
Crossing limbs and merging canopies with neighboring trees.



Tag 4807: Canopy leaning north west due to competition for light.
Crossing limbs and merging canopies with neighboring trees.



Tag 4808: Canopy leaning north west due to competition for light.
Crossing limbs and merging canopies with neighboring trees.



Tag 4809: Bad attachments at first main crotch of codominant uprights. Crossing limbs and merging canopies with neighboring trees.



Tag 4810: Crossing limbs and merging canopies with neighboring trees. Located on fenceline.



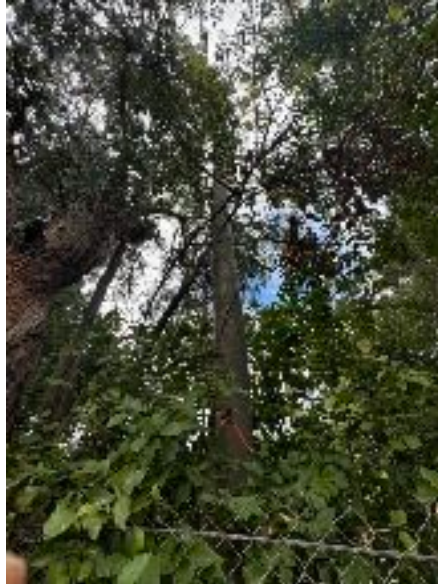
Tag 4811: Canopy growing to the northwest.
Decay noted in wounds from cuts of large removed limbs.
Located on the fenceline.



Tag 4812: Located on adjacent lot with drip line over property.
This tree is not suitable for landscape tree.



Tag 4813: Located 3ft from fenceline.
On adjacent lot with drip line over property.
Deadwood noted in upper canopy.



Tag 4814: Located 3ft from fenceline.
On adjacent lot with drip line over property.
Deadwood noted in upper canopy.



Tag 4815: Rot noted in main stem and in dominant upright.
Poorly attached epicormic growth.
Located on property at fenceline.



Tag 4816: Thick dead vine observed on main stem.
Needs to be removed - dead tissue of vine can lead to fungal and pest infection.



Tag 4817: Located on property at fenceline.
Heavy limbs of upper canopy extend over roofline.



Tag 4818: Upper canopy colliding with neighboring upright Located 3ft from fence-line.
Co-dominant upright extending over roof with fused limbs.



Tag 4819: Lower canopy has significant epicormic growth.
Decay noted in main stem.



Tag 4820: Significant deadwood upper canopy.
Located 3ft from fenceline on the adjacent lot with drip line over property.



Tag 4821: Old wound noted at base of main stem.
Moderate decay and fruiting fungal bodies observed at base of trunk.



Tag 4822: Located on adjacent lot 3 feet from fence line with drip line extending over property.
Decay noted on codominant upright.



Tag 4823: Large decaying wound at base of root flare.
Located on adjacent lot 3 feet from property line with drip line extending
over property.



Tag 4824: Competing for sunlight with neighboring trees.
Limited foliage on trunk until upper canopy.



Tag 4825: Dense lower canopy.
Dead foliage from neighboring trees throughout canopy.



Tag 4826: Girdling at the base due to chain link fence.
Trunk has fused to chain link fence.
Located on neighboring property.



Tag 4827: Lower canopy has minor foliage dieback. Located 2ft from fenceline on neighboring property.



Tag 4828: Entire trunk of the tree is covered in ivy that should be removed. Located 4ft from fenceline on neighboring property. Future growth of canopy will cover parking lot light.



Tag 4829: Slight mechanical damage at base of trunk.
No action necessary.



Tag 4830: Slight mechanical damage at base of trunk
No action necessary



Tag 4831: Slight mechanical damage at base of trunk
No action necessary



Tag 4832: Multiple stems from secondary growth.
Dense canopy.



Tag 4833: Minor dieback and deadwood in upper canopy.



Tag 4834: Competing for sunlight with neighboring cedar tree.



Tag 4835: Canopy interfering with growth of neighboring palm tree.



Tag 4836: Dead



Tag 4837: Second upright growing out of trunk flare.
Included bark noted between uprights of main stem.



Tag 4838: Competing for sunlight between neighboring redwood trees.



Tag 4839: Sparse and thin foliage due to long term drought stress.



Tag 4840: Canopy is growing to the west due to competition with neighboring Redwood.



Tag 4841: Tree is in fair condition due to drought stress.
Construction materials - sand and sediment placed around base of the tree.



Tag 4842: Significant secondary growth at root flare.
Evidence of minor drought stress.



Tag 4843: Extensive decay in the main stem.
Loosing heartwood, inevitable death.



Tag 4844: Root ball is exposed on the northwest side of the tree.



Tag 4845: Poor anchorage and connection at the base of the main stem which can lead to breakage and ultimately failure of the tree.



Tag 4846: Ivy growing up main stem.
Exposed root ball - poor anchorage.



Tag 4847: Poor connection of uprights with included bark and evidence of decay on main uprights.



Tag 4848: Upright growing towards neighboring property is close to contact with sports fencing.



Tag 4849: No notable observations.



Tag 4850: Ivy growing on multiple uprights.
Decay pockets noted in multiple uprights.



Tag 4851: Ivy growing around base of the tree and up main stem. Dieback evident in the canopy



Tag 4852: Significant lean to the north due to competition for light with the walnut tree. Ivy growing at the base of the tree.



Tag 4853: Ivy growing around the base of the tree and up the main stem. Minor bark damage from bark beetle.



Tag 4854: Ivy growing around the base and beginning to climb trunk.



Tag 4855: Tree has been pollarded.
Ivy growing around the base and starting to climb the trunk.



Tag 4856: Multiple epicormic shoots growing from root flare.
Tree has been pollarded.



Tag 4857: Damage to trunk flare noted.



Tag 4858: No notable observations



Tag 4859: No notable observations



Tag 4860: No notable observations



Tag 4861: Tree has been topped.
Canopy is comprised of secondary growth.



Tag 4862: Tree has a moderate lean to the north.



Tag 4863: Ivy growing around base of tree.



Tag 4864: Ivy growing around base of tree.



Tag 4865: No notable observations



Tag 4866: Ivy growing at the base of the tree.



Tag 4867: Ivy growing around the base of tree



Tag 4868: Ivy growing around the base of tree.



Tag 4869: Moderate secondary growth growing out of the base of the tree.
Minor stress due to drought.



Tag 4870: No notable observations.



Tag 4871: Minor physical damage at base of the trunk.
Tree splits into two codominant uprights at about 18 feet above ground.



Tag 4872: Large dead vine still attached to main upright.
Located on adjacent lot, touching fence of property line.
Large holes noted around the root ball.



Tag 4873: Leaning against the property fence.
Located on the adjacent lot approximately 3 inches from property line.



Tag 4874: Leaning against the property fence.
Located on the adjacent lot.



Tag 4875: Canopy is growing towards the south due to old pruning and competing for light with neighboring trees.



Tag 4876: Canopy is growing towards the north east due to competing for light with neighboring trees. Foliage and upper canopy is sparse.



Tag 4877: Pushing up against the chain link fence.
Poor connection with the codominant main stem.



Tag 4878: Ivy growing around the base of the tree and up the trunk.



Tag 4879: Ivy growing around the base and up the main trunk of the tree. Tree has a slight lean and the canopy is growing towards the adjacent property structure.



Tag 4880: Significant lean to the southeast due to competition with neighboring trees.



Tag 4881: Canopy is converging with neighboring trees.



Tag 4882: Canopy is converging with neighboring trees.
Moderate dead wood noted in canopy.
Canopy is growing towards the south east due to competition for light with neighboring trees.



Tag 4883: Canopy is growing towards the southwest, with a significant lean due to competition with the trees for light.



Tag 4884: Proximity to property structure and size of limbs in the upper canopy could result in major damage if a failure occurs due to wind or rain.



Tag 4885: Root flare is overly exposed and has poor anchorage.
Ivy is growing around the base of the tree.
Tree is pushing up against the chain link fence.



Tag 4886: Roots of the tree are partially constricted by cement and retaining wall.
Tree is pushing up against the chain link fence.



Tag 4887: Base of the trunk is pushing against the retaining wall and chain link fence.
Large limb is crushing the fence.



Tag 4888: Canopy is converging with neighboring oak tree.



Tag 4889: Canopy has a significant lean to the southwest to due to competition for light with the neighboring oak tree.



Tag 4890: Main uprights are growing into the chainlink fence.



Tag 4891: Poor connection at base of first main crotch with included bark.



Tag 4892: Canopy branches are growing through and fusing to branches of canopies of two neighboring eucalyptus trees.



Tag 4893: Canopy is largely impeded by large neighboring eucalyptus
Decay noted in main stem.



Tag 4894: English walnut is dead and black walnut base is growing
epicormic growth.

Tag 4895: Canopy is growing in contact with second floor deck railing.



Tag 4896: No notable observations.



Tag 4897: Canopy is growing over the roof of property. Moderate deadwood noted in canopy.



Tag 4898: No notable observations.



Tag 4899: No notable observations.



Tag 4900: No notable observations.



Tag 4901: No notable observations.



Tag 4902: No notable observations.



Tag 4903: No notable observations.



Tag 4904: Moderate decay evident in main uprights.



Tag 4905: Large amount of end weight in the upper canopy.



Tag 4906: Significant decay noted in the root flare and main stem.



Tag 4907: Significant deadwood noted in canopy. Canopy branches are growing into roof.



Tag 4908: Branches are growing into contact with property structure. Fused aerial crotch.



Tag 4909: Major decay in main stem and uprights have compromised structural integrity, death is inevitable.



Tag 4910: Major decay in main stem has compromised structural integrity, death is inevitable.



Tag 4911: Tree has a significant lean to the north east, and is growing over the property structure. This tree could pose a threat to property of persons if a failure was to occur.



Tag 4912: Canopy of the tree is growing over property structure, large amounts of end weight in upright growing over property. If a failure was to occur, this tree could pose a threat to property or people.



Tag 4913: Tree is growing against balcony railing of property, and over roof.



Tag 4914: Tree is leaning to the northeast.
Canopy foliage is very dense.



Tag 4915: Branches in the upper canopy are growing over the roof of the property structure.
Significant weight on branches in the upper canopy.



Tag 4916: Branches are extending towards the south over the property structure, and significant end weight on south west side of the tree.



Tag 4917: Evidence of secondary upright recently split and broke off of the tree.



Tag 4918: Mechanical damage is noted on the bark of the main stem
Small amounts of die back noted upper canopy.



Tag 4919: Mechanical damage is noted on the bark of the main stem
Small amounts of decay noted on Main stem.



Tag 4920: Discoloring in the bark due to cankering on main stem, small fungal infection noted.



Tag 4921: Significant lean to the southwest. Main stem is pushing against the structure.



Tag 4922: Moderate die back noted in canopy.



Tag 4923: Decay noted in the root flare and poor anchorage which could lead to failure.



Tag 4924: Significant decay from old cut in main upright.



Tag 4925: Significant weight in branches of the upper canopy, and close proximity to property structure.



Tag 4926: Sparse foliage in upper canopy.
Evidence of moderate decay on root flare.
Ivy growing around the base.



Tag 4927: Canopies among neighboring Chinese pistache trees have become uniform, minor decay noted in main stem, resulting from old wound.
Branches growing over roof of property structure.



Tag 4928: Canopies among neighboring Chinese pistache trees have become uniform.
Branches growing over roof of property structure.



Tag 4929: Canopies among neighboring Chinese pistache trees have become uniform.
significant lean to the south due to competition for light with neighboring trees.



Tag 4930: Canopies among neighboring Chinese pistache trees have become uniform.



Tag 4931: Canopies among neighboring Chinese pistache trees have become uniform.
Significant lean to the southwest, due to competition with neighboring Chinese pistache trees.



Tag 4932: Canopies among neighboring Chinese pistache trees have become uniform.

Significant lean to the southeast, due to competition with neighboring Chinese pistache trees.



Tag 4933: Canopies among neighboring Chinese pistache trees have become uniform.



Tag 4934: Canopies among neighboring Chinese pistache trees have become uniform.



Tag 4935: Canopies among neighboring Chinese pistache trees have become uniform.



Tag 4936: Canopies among neighboring Chinese pistache trees have become uniform.
Dense secondary growth at main crotch.



Tag 4937: Decay noted on main stem and main uprights.



Tag 4938: Decay noted on main stem and main uprights.
Included bark between two main uprights.



Tag 4939: Decay noted on main stem and main uprights.



Tag 4940: Significant decay noted on main stem and main uprights.



Tag 4941: Significant decay noted on main stem and main uprights.
Very poor attachment at root flare.
Significant lean to the south.
Significant potential for failure.



Tag 4942: Canopy is very dense, moderate deadwood noted in the canopy.



Tag 4943: Canopy is very dense, moderate deadwood noted in the canopy.



Tag 4944: Mechanical wound noted on entry to complex, multiple broken limbs visible.



Tag 4945: Mechanical wounds from vehicle noted on limb, extending over parking area.
wound evident from major upright, splitting from main stem.



Tag 4946: Moderate decay noted on main stem and lateral branches.



Tag 4947: Moderate decay noted on main stem and main uprights.



Tag 4948: Substantial amount of decay in trunk where tree was removed at 3ft
Canopy consists of secondary growth.



Tag 4949: No notable observations.



Tag 4950: No notable observations.



Tag 4951: No notable observations.



Tag 4952: No notable observations.



Tag 4953: Canopy branches are coming into contact with roof of adjacent property structure.



Tag 4954: Canopy branches are coming into contact with telephone wire, extending between two property structures.



Tag 4955: Heavy end weight noted an upper canopy failure of a major upright can result in property damage due to proximity to structure.



Tag 4956: Minor deadwood noted in canopy.
Branches in contact with roof.



Tag 4957: Significant deadwood noted in canopy, overlapping branches of secondary growth.



Tag 4958: No notable observations.



Tag 4959: Canopy has merged with neighboring crape myrtle trees.



Tag 4960: Canopy has merged with neighboring crape myrtle trees.



Tag 4961: Canopy has merged with neighboring crape myrtle trees.



Tag 4962: Canopy of the tree has a significant lean to the east due to competition with neighboring trees.



Tag 4963: No notable observations.

Tag 4964: No notable observations.



Tag 4965: No notable observations.

Tag 4966: No notable observations.



Tag 4967: No notable observations.



Tag 4968: Included bark noted between the two main uprights at first main crotch.

Branches of the canopy growing over the roof, significant and weight noted in upper canopy.



Tag 4969: Moderate end weight in upper canopy.

Tag 4970: Significant and weight noted and upper canopy on main upright, leaning towards property structure.



Tag 4971: Upper canopy is colliding with canopy of neighboring liquidambar tree.



Tag 4972: Branches in the upper canopy are extending over roof of property structure, and the canopy is colliding with canopy of neighboring liquidambar tree.

Tag 4973: Upper canopy is colliding with canopy of neighboring liquidambar tree.



Tag 4974: Canopy has very few significant lateral branches, canopy is consisting of primarily small, secondary growth.



Tag 4975: Upper canopy has moderate to significant end weight.



Tag 4976: Canopy is extremely stressed, defoliation of canopy is occurring significantly more rapidly than neighboring liquid ambar trees.



Tag 4977: Upper canopy is colliding with canopy of neighboring Sweetgum. Tree is very stressed and is defoliating at a faster rate than neighboring Sweetgum trees.



Tag 4978: Trunk has an eastern lean, upper canopy has partially corrected to the southwest.



Tag 4979: Upper canopy has branches extending over the roof of the property structure.
Beehive is a apparent in property structure directly adjacent to tree.



Tag 4980: Significant deadwood and decay noted in upper canopy limbs, as well as decay and fruiting bodies noted on main upright.



Tag 4981: Moderate die back in upper canopy. Significant deadwood is apparent.



Tag 4982: No notable observations.



Tag 4983: Fusing is major uprights at approximately 3.5-4ft above grade.



Tag 4984: Hole has been cut out in center of upper canopy, two 2x4 boards were placed in upper canopy.
Due to style of pruning, significant deadwood in the center of the canopy.



Tag 4985: Canopy of the neighboring lemon tree is in contact with trunk.



Tag 4986: Minor die back noted in canopy.



Tag 4987: Significant die back in the canopy, fused limbs in canopy, dead moss evident on trunk and main uprights.



Tag 4988: Canopy contains birds nest, canopy is very dense with slight die back.



Tag 4989: Decay noted in both of the two main uprights. Deadwood is a parent in the upper canopy.



Tag 4990: Trunk of the tree has a significant lean to the northeast.



Tag 4991: Poor attachment at first main crotch.
Tree has already lost a major upright just adjacent to first main crotch.



Tag 4992: Significant dieback at the top of the canopy.
Sparse foliage throughout the canopy.



Tag 4993: Sparse foliage in the canopy is noted.
Minor die back observed in the canopy.
Neighboring Monterey cypress canopy is conjoining with canopy of this
Monterey cypress.



Tag 4994: Upper canopy is beginning to conjoin with the neighboring Monterey cypress canopy.



Tag 4995: Canopy conjoining with neighboring Monterey cypress trees.



Tag 4996: Minor dieback in canopy.

Skirt of the canopy is touching parked van underneath the tree.

Tag 4997: Canopy skirt is approximately 6 1/2 feet above grade, minor dieback noted and lower canopy.

Tag 4998: Canopy skirt is approximately 6 feet above grade at certain points.



Tag 4999: Crossing limbs noted in canopy.

Minor dieback apparent throughout canopy.



Tag 5000: Canopy is growing up into the canopy of the neighboring deodar cedar.



Tag 5001: No notable observations.



Tag 5002: Moderate die back noted throughout canopy from drought stress.



Tag 5003: Moderate die back noted throughout canopy from drought stress.



Tag 5004: Moderate die back noted throughout canopy from drought stress.



Tag 5005: Palm fronds are growing around the neighboring pine tree.



Tag 5006: Canopy skirt is approximately 5ft above grade level at multiple points.

Significant Ivy growing up the main stem and main uprights.

Moderate deadwood noted in canopy.



Tag 5007: Significant canopy dieback.

Fungal infection is causing the tree's decline.



Tag 5008: Moderate deadwood noted in the canopy.
Slight mechanical damage on northwest side of the trunk.



Tag 5009: Canopy is enveloping adjacent lamp.
Minor deadwood noted in canopy.



Tag 5010: Fungal fruiting bodies noted on trunk and co-dominant upright.



Tag 5011: The canopy of this tree is growing entirely towards the eastern direction due to competition for light with neighboring oak trees.



Tag 5012: Volunteer from another species growing at the base that could affect the trees structural integrity.
Canopy has grown towards the south due to competition with neighboring oak tree.



Tag 5013: Significant decay on co-dominant upright.
Multiple broken limbs in the upper canopy.
Canopy contains multiple overlapping limbs.
Canopy skirt is nearly touching the ground in multiple locations.
Canopy is obscuring adjacent lamppost.



Tag 5014: Significant decay on trunk and up both codominant uprights.
Canopy contains overlapping limbs.
Canopy skirt is approximately 3 feet above grade.



Tag 5015: Root system can be considered integral to the hillside grade retention
Ivy growing up the trunk.



Tag 5016: Root system can be considered integral to the hillside grade retention

Ivy growing up the trunk.

Minor deadwood noted in canopy.



Tag 5017: Significant Ivy growing up the trunk of the tree and both main uprights.

Moderate deadwood noted in the canopy.



Tag 5018: Foliage is growing predominantly on the western side due to the availability of light.



Tag 5019: Dense canopy with over-lapping limbs.



Tag 5020: Ivy growing up trunk.
Canopy is significantly obstructed by surrounding trees.



Tag 5021: Multiple trunks conjoined at the base, sharing a root system.
Root system is damaging the surrounding asphalt.



Tag 5022: Multiple volunteers growing from base of the trunk.



Tag 5023: Growing in close proximity to neighboring Mexican fan palm.



Tag 5024: Growing in close proximity to neighboring Mexican fan palm.



Tag 5025: Canopy skirt is approximately 3.5ft above grade at multiple points.



Tag 5026: Canopy overhangs adjacent parking spaces.



Tag 5027: Dead



Tag 5028: Major decay on main-stem.
Death is imminent.



Tag 5029: Location is a poor for the health of the tree and surrounding trees.
Canopy is growing at a northward lean.



Tag 5030: Decay noted in the upper canopy.
Signs of cankering at the base of the trunk.
Mechanical damage on trunk.
Crossing limbs in canopy.



Tag 5031: Upper canopy colliding into hedge.
Limb hanging over walkway that could pose danger to pedestrians on path
Included bark noted at base of trunks.



Tag 5032: Significant decay noted on trunk, larger co-dominant upright has been removed years ago and the wound is decaying.



Tag 5033: Trunk is colliding with roof of the adjacent structure.



Tag 5034: Tree has been heavily pruned into a hedge structure, with only one upright extending over 15 feet tall.



Tag 5035: Tree has been topped, significant deadwood in the canopy. Poor structure of canopy.



Tag 5036: Limbs of the upper canopy, extending over roof of adjacent structure.

Tag 5037: Canopy growing in contact with roof of adjacent structure. Dead



Tag 5038: No notable observations.



Tag 5039: No notable observations.



Tag 5040: Moderate die back noted in canopy.
Poor connection at first main crotch.
Canopy growing over roof of adjacent structure.



Tag 5041: Wires around limb are girdling the tree.
Genevie branches are extending over roof of adjacent structure.
Minor die back noted in canopy.



Tag 5042: Tree is approximately 4ft from property PG&E utility apparatus.
Canopy branches are close to roof of adjacent structure.



Tag 5043: Significant decay noted in main-stem of tree, death is imminent.



Tag 5044: Co-dominant uprights are fused together resulting in poor attachment.



Tag 5045: Significant decay at the base of the trunk.
Poor structural integrity and has potential for failure.



Tag 5046: Dead branch apparent in canopy.



Tag 5047: No notable observations.



Tag 5048: Canopy has a significant lean to the southwest.



Tag 5049: Trunk is growing in contact with property patio fence, canopy limbs are extending over roof of adjacent structure.



Tag 5050: Sparse foliage in canopy, minor die back noted.



Tag 5051: Significant amount of dead limbs and decay noted in upper canopy.



Tag 5052: Canopy has fused with adjacent canary island date palm. Moderate deadwood in upper canopy.



Tag 5053: Tree is being pushed over by neighboring oak tree.
Canopy is only growing on southwest side due to lack of sunlight.



Tag 5054: Minor die back noted in upper canopy.



Tag 5055: Significant lean to the south, due to competition for light by neighboring oak trees.



Tag 5056: Birds nest in canopy.
Minor deadwood noted in upper canopy.



Tag 5057: Canopy is leaning towards the south west due to competition with neighboring oak trees for light.



Tag 5058: Moderate deadwood in upper canopy. Dead limb noted in upper canopy.



Tag 5059: Medium limb is conjoined with power pole, moderate deadwood in upper canopy, wound on main stem has evidence of decay



Tag 5060: Canopy is growing amongst the adjacent powerlines.



Tag 5061: Multiple dead limbs from itself and other trees have fallen into the canopy.



Tag 5062: Moderate die back and deadwood in lower canopy.



Tag 5063: Ivy Growing up main stem and main uprights, deadwood observed throughout canopy.



Tag 5064: Moderate deadwood throughout canopy.



Tag 5065: Significant Ivy growing up main stem and into canopy.



Tag 5066: Ivy growing up the main stem and both uprights up into canopy, moderate deadwood noted throughout canopy.



Tag 5067: Ivy is growing up main stem, and both uprights all the way up to the upper canopy.
Minor deadwood noted throughout canopy.



Tag 5068: Ivy growing up main stem.
Moderate deadwood noted throughout canopy.



Tag 5069: Minor deadwood in lower canopy.



Tag 5070: Moderate deadwood in the canopy.



Tag 5071: Dead rounds of old palm near base.
Included bark between co-dominant uprights.



Tag 5072: Moderate deadwood noted throughout canopy.



Tag 5073: Moderate deadwood noted throughout canopy.



Tag 5074: Moderate deadwood noted throughout canopy



Tag 5075: Moderate deadwood noted throughout canopy



Tag 5076: Ivy growing up main stem to middle of the canopy. Moderate deadwood throughout canopy.



Tag 5077: Ivy growing up main stem and main uprights all the way to upper canopy.



Tag 5078: Ivy growing up main stem up until upper canopy, tree has a significant lean to the west due to competition for light.



Tag 5079: Ivy growing up the main stem.
Moderate deadwood noted throughout canopy.



Tag 5080: Tree has a significant lean to the Westwood direction due to competition for light with neighboring oak trees.



Tag 5081: Ivy growing up main stem, and main uprights to upper portion of the canopy.

Moderate deadwood noted throughout canopy.



Tag 5082: Ivy growing up main Stan, and main uprights, deadwood noted throughout the canopy.



Tag 5083: Very significant deadwood throughout canopy.
Ivy growing up main stem to approximately 25-30 feet up the canopy.



Tag 5084: Moderate deadwood throughout canopy.
Significant lean to the west due to competition for light.



Tag 5085: Tree has a significant lean to the west due to competition with neighboring oak trees for light.



Tag 5086: Co-dominant uprights of the tree have a major lateral lean to the west.



Tag 5087: Moderate deadwood canopy.



Tag 5088: No notable observations.



Tag 5089: Slight Ivy growing up main stem.
Moderate deadwood throughout canopy.



Tag 5090: Moderate deadwood throughout canopy.



Tag 5091: Slight deadwood noted throughout canopy.



Tag 5092: Tree has a significant lean to the east due to competition light with neighboring oak trees.



Tag 5093: Moderate deadwood noted throughout canopy.
Tree has a slight lean to the east.



Tag 5094: Ivy growing on trunk.
Moderate deadwood noted throughout canopy.



Tag 5095: Significant rot in the trunk, splitting crotch, cracking on the trunk.

Deadwood and decay throughout the entire tree.



Tag 5096: Branches extending over the power cables and over the street.



Tag 5097: Branches extending over the power cables and over the street.



Tag 5098: Branches extending over the power cables and over the street.



Tag 5099: Ivy growing on trunk throughout canopy.



Tag 5100: Ivy growing on trunk throughout canopy.



Tag 5101: Ivy growing on trunk throughout canopy.



Tag 5102: Ivy growing on trunk throughout canopy.
Significant deadwood throughout canopy.



Tag 5103: Ivy growing on trunk throughout canopy.
Significant deadwood throughout canopy.



Tag 5104: Ivy growing on trunk throughout canopy.
Significant deadwood throughout canopy.



Tag 5105: Ivy is growing up trunk throughout branches and canopy.



Tag 5106: Ivy is growing up trunk throughout branches and canopy. Tree has a significant westward lean.



Tag 5107: Ivy is growing up trunk throughout branches and canopy. Tree has a significant westward lean.



Tag 5108: Ivy is growing up trunk throughout branches and canopy.



Tag 5109: Ivy is growing up trunk throughout branches and canopy. Moderate deadwood noted throughout canopy.



Tag 5110: Old vines from removed Ivy exist in upper canopy.



Tag 5111: Ivy growing up main stem to the upper canopy.



Tag 5112: No notable observations.



Tag 5113: Ivy growing up main-stem and throughout canopy.



Tag 5114: Ivy growing up main-stem and throughout canopy.



Tag 5115: Ivy growing up main stem and throughout canopy.
Significant deadwood throughout canopy.
Partially constructed tree house.



Tag 5116: Minor deadwood in canopy.



Tag 5117: Minor deadwood noted throughout canopy. Tree has a moderate Westward lean.



Tag 5118: Significant deadwood throughout canopy, tree has a Westward lean.



Tag 5119: Moderate deadwood, noted in the canopy.
Slight mechanical damage on trunk 4 ft above grade.



Tag 5120: Ivy growing up main stem.
Slight deadwood noted in canopy.



Tag 5121: Tree has a westward lean.



Tag 5122: Ivy growing up main stem.
Tree has a significant westward lean.



Tag 5123: Ivy is growing up the main stem of the tree, moderate deadwood.



Tag 5124: Tree has a significant southwest lean.



Tag 5125: Moderate deadwood noted throughout canopy.
Tree has a significant Westward lean.



Tag 5126: Moderate deadwood noted throughout canopy.



Tag 5127: Tree has a significant Northwest lean.



Tag 5128: Moderate deadwood throughout canopy.



Tag 5129: Moderate deadwood throughout canopy.



Tag 5130: Moderate deadwood throughout canopy.



Site Map



Protected Trees in the Town of Los Gatos

The Town of Los Gatos has established guidelines for the protection of trees. Removing or excessively pruning a “Protected” tree requires a permit. The guidelines classify protected trees as follows:

1. Trees with a 12-inch or greater diameter on developed residential property.
2. Trees with an 8-inch or greater diameter on developed hillside residential property.
3. Specific 8-inch or greater diameter tree species are located on any developed residential property, including Blue Oak, California Buckeye, Black Oak, and Pacific Madrone.
4. Trees with a 4-inch or greater diameter on vacant or non-residential property.
5. Trees with a 4-inch or greater diameter when removal relates to any development review.
6. Any tree mandated to be planted or retained by the terms and conditions of a development approval, building permit, tree removal permit, or code enforcement action.

However, there are exceptions, such as fruit or nut trees less than 18 inches in diameter and certain other species less than 24 inches in diameter, including Black Acacia, Tree of Heaven, Tulip Tree, various Eucalyptus species, Palm, and Privet.

Tree tags to be retained during construction - 5056, 5057, 5059, 5060, 5062, 5063, 5075, 5087, 5088, 5089, 5090, 5091, 5092, 5093, 5094, 5095, 5096, 5097, 5098, 5099, 5100, 5101, 5102, 5103, 5104, 5115, 5116

Additional trees to be retained from addendum: 5464, 5465, 5466, 5468, 5474, 5475, 5476, 5485, 5486

All other trees must be removed to facilitate project construction.

Tree Protection Measures for construction

Construction Site - Tree Preservation

- To the extent feasible, avoid root damage through grading, trenching, compaction, etc., at least within an area 1.5 times the ‘drip-line’ area of trees. Where root damage cannot be avoided, roots encountered (over 1" diameter) should be exposed approximately 12" beyond the area to be disturbed (towards tree stem), by hand excavation, or with specialized hydraulic or pneumatic equipment, cut cleanly with hand pruners or power saw, and immediately back-filled with soil. Avoid tearing, or otherwise disturbing that portion of the root(s) to remain.
- Construct a temporary fence as far from the tree stem (trunk) as feasible, at the drip-line of the tree, or to the specified location as directed by the project arborist. This fencing should completely surround the tree, except in areas that will not have any construction activity. Post no parking or storage signs outside / on fencing. Do not attach posting to the main-stem of the tree.
- Do not allow vehicles, equipment, pedestrian traffic; building materials or debris storage; or disposal of toxic or other materials inside of the fenced off area.
- Trees that will be impacted by construction may benefit from fertilization, ideally performed in the fall, and preferably prior to any construction activities.
- Mulch rooting area with an acidic, organic compost or mulch.
- Arrange for periodic (Biannual or Quarterly) inspection of tree's condition, and treatment of damaging conditions (insects, diseases, nutrient deficiencies, etc.) as they occur, or as appropriate.
- Individual trees likely to suffer significant impacts may require specific, more

extensive efforts and/or a more detailed specification than those contained within these general guidelines.

Sec. 29.10.1005. Protection of trees during construction.

Protective tree fencing shall specify the following:

- (1) Size and materials. Six (6) foot high chain link fencing, mounted on two-inch diameter galvanized iron posts, shall be driven into the ground to a depth of at least two (2) feet at no more than 10-foot spacing. For paving area that will not be demolished and when stipulated in a tree preservation plan, posts may be supported by a concrete base.
- (2) Area type to be fenced. Type I: Enclosure with chain link fencing of either the entire dripline area or at the tree protection zone (TPZ), when specified by a certified or consulting arborist. Type II: Enclosure for street trees located in a planter strip: chain link fence around the entire planter strip to the outer branches. Type III: Protection for a tree located in a small planter cutout only (such as downtown): orange plastic fencing shall be wrapped around the trunk from the ground to the first branch with 2-inch wooden boards bound securely on the outside. Caution shall be used to avoid damaging any bark or branches.
- (3) Duration of Type I, II, III fencing. Fencing shall be erected before demolition, grading or construction permits are issued and remain in place until the work is completed. Contractor shall Page 14 first obtain the approval of the project arborist on record prior to removing a tree protection fence.
- (4) Warning sign. Each tree fence shall have prominently displayed an 8.5 x 11-inch sign stating: "Warning— Tree Protection Zone-this fence shall not be removed and is subject to penalty according to Town Code 29.10.1025"
- (5) Prior to the commencement of construction, install the fence at the dripline, around any tree and/or vegetation to be retained which could be affected by the construction and prohibit any storage of construction materials or other materials, equipment cleaning, or parking of vehicles within the TPZ. The dripline shall not be altered in any way so as to increase the encroachment of the construction.
- (6) Prohibit all construction activities within the TPZ, including but not limited to: excavation, grading, drainage and leveling within the dripline of the tree unless approved by the Director.
- (7) Prohibit disposal or depositing of oil, gasoline, chemicals or other harmful materials within the dripline of or in drainage channels, swales or areas that may lead to the dripline of a protected tree.
- (8) Prohibit the attachment of wires, signs or ropes to any protected tree.
- (9) Design utility services and irrigation lines to be located outside of the dripline when feasible.
- (10) Retain the services of a certified or consulting arborist who shall serve as the project arborist for periodic monitoring of the project site and the health of those trees to be preserved. The

project arborist shall be present whenever activities occur which may pose a potential threat to the health of the trees to be preserved and shall document all site visits.

(11) The Director and project arborist shall be notified of any damage that occurs to a protected tree during construction so that proper treatment may be administered.

Tree Protective Fencing



Sec. 29.10.1010. Pruning and maintenance.

All pruning shall be in accordance with the current version of the International Society of Arboriculture Best Management Practices—Tree Pruning and ANSI A300-Part 1 Tree, Shrub and Other Woody Plant Management—Standard Practices, (Pruning) and any special conditions as determined by the Director. For developments, which require a tree preservation report, a certified or consulting arborist shall be in reasonable charge of all activities involving protected trees, including pruning, cabling and any other work if specified.

Any public utility installing or maintaining any overhead wires or underground pipes or conduits in the vicinity of a protected tree shall obtain permission from the Director before performing any work, including pruning, which may cause injury to a protected tree. (e.g. cable TV/fiber optic trenching, gas, water, sewer trench, etc.).

Pruning for clearance of utility lines and energized conductors shall be performed in compliance with the current version of the American National Standards Institute (ANSI) A300 (Part 1)- Pruning, Section 5.9 Utility Pruning. Using spikes or gaffs when pruning, except where no other alternative is available, is prohibited.

No person shall prune, trim, cut off, or perform any work, on a single occasion or cumulatively, over a three-year period, affecting twenty-five percent or more of the crown of any protected tree without first obtaining a permit pursuant to this division except for pollarding of fruitless mulberry trees (*Morus alba*) or other species approved by the Town Arborist. Applications for a pruning permit shall include photographs indicating where pruning is proposed. Page 15

No person shall remove any Heritage tree or large protected tree branch or root through pruning or other method greater than four (4) inches in diameter (12.5” in circumference) without first obtaining a permit pursuant to this division.

Sec. 29.10.1025. Enforcement—Remedies for violation.

In addition to all other remedies set forth in this code or otherwise provided by law, the following remedies shall be available to the Town for violation of this division:

(1) Tree removals in absence of or in anticipation of development. If a violation occurs in the absence of or prior to proposed development, then discretionary applications and/or building permit applications will not be accepted or processed by the Town until the violation has been remedied to the reasonable satisfaction of the Director. Mitigation measures as determined by the Director may be imposed as a condition of any subsequent application approval or permit for development on the subject property. A mitigation plan shall include specific measures for the protection of any remaining trees on the property, and shall provide for the replacement of each hillside tree that was removed illegally with a new tree(s) in the same location(s) as those illegally removed tree(s). The replacement ratio shall be at a greater ratio than that required in accordance with the standards set forth in Sec. 29.10.0985 of this division. If the court or the Director directs a replacement tree or trees to be planted as part of the remedy for the violation, the trees shall be permanently maintained in a good and healthy condition. The property owner shall execute a five-year written maintenance agreement with the Town. For those trees on public property, replacement is to be determined by the Director of Community Development or by the Director of Parks and Public Works.

(2) Pending development applications. Incomplete applications will not be processed further until the violation has been remedied. If an application has been deemed complete, it may be denied by the Director or forwarded to the Planning Commission with a recommendation for denial at the Director's discretion. Mitigation measures as determined by the director may be imposed as Page 16 a condition of approval. A mitigation plan shall include specific measures for the protection of any remaining trees on the property, and shall provide for the replacement of each hillside tree that was removed illegally with a new tree(s) in the same location(s) as those illegally removed tree(s). The replacement ratio shall be at a greater ratio than that required in accordance with the standards set forth in Sec. 29.10.0985 of this division. If the court or the Director directs a replacement tree or trees to be planted as part of the remedy for the violation, the trees shall be permanently maintained in a good and healthy condition. The property owner shall execute a five-year written maintenance agreement with the Town. For those trees on public property, replacement is to be determined by the Director of Community Development or by the Director of Parks and Public Works.

(3) Projects under construction. a. If a violation occurs during construction, the Town may issue a stop work order suspending and prohibiting further activity on the property pursuant to the grading, demolition, and/or building permit(s) (including construction, inspection, and issuance of certificates of occupancy) until a mitigation plan has been filed with and approved by the Director, agreed to in writing by the property owner(s) or the applicant(s) or both, and either implemented or guaranteed by the posting of adequate security in the discretion of the Director. A mitigation plan shall include specific measures for the protection of any remaining trees on the property, and shall provide for the replacement of each hillside tree that was removed illegally with a new tree(s) in the same location(s) as those illegally removed tree(s). The replacement ratio shall be at a greater ratio than that required in accordance with the standards set forth in Sec. 29.10.0985 of this division. If the court or the Director directs a replacement tree or trees to be planted as part of the remedy for the violation, the trees shall be permanently maintained in a good and healthy condition. The property owner shall execute a five-year written maintenance agreement with the Town. For those trees on public property, replacement is to be determined by

the Director of Community Development or by the Director of Parks and Public Works. b. The violation of any provisions in this division during the conduct by any person of a tree removal, landscaping, construction or other business in the Town shall constitute grounds for revocation of any business license issued to such person.

(4) Civil penalties. Notwithstanding section 29.20.950 relating to criminal penalty, any person found to have violated section 29.10.0965 shall be liable to pay the Town a civil penalty as prescribed in subsections a. through d. a. As part of a civil action brought by the Town, a court may assess against any person who commits, allows, or maintains a violation of any provision of this division a civil penalty in an amount not to exceed five thousand dollars per violation. b. Where the violation has resulted in removal of a protected tree, the civil penalty shall be in an amount not to exceed five thousand dollars per tree unlawfully removed, or the replacement value of each such tree, whichever amount is higher. Such amount shall be payable to the Town and deposited into the Tree Replacement Fund. Replacement value for the purposes of this section shall be determined utilizing the most recent edition of the Guide for Plant Appraisal, as prepared by the Council of Tree and Landscape Appraisers and the Species and Group Classification Guide published by the Western Chapter of the International Society of Arboriculture. c. If the court or the Director directs a replacement tree or trees to be planted as part of the remedy for the violation, the trees shall be permanently maintained in a good and healthy condition. The property owner shall execute a five year written maintenance agreement with the Town. d. The cost of enforcing this division, which shall include all costs, staff time, and attorneys' fees. Page 17

(5) Injunctive relief. A civil action may be commenced to abate, enjoin, or otherwise compel the cessation of such violation.

(6) Costs. In any civil action brought pursuant to this division in which the Town prevails, the court shall award to the Town all costs of investigation and preparation for trial, the costs of trial, reasonable expenses including overhead and administrative costs incurred in prosecuting the action, and reasonable attorney fees.

Sec. 29.10.1005. Protection of trees during construction.

Protective tree fencing shall specify the following: (1) Size and materials. Six (6) foot high chain link fencing, mounted on two-inch diameter galvanized iron posts, shall be driven into the ground to a depth of at least two (2) feet at no more than 10-foot spacing. For paving area that will not be demolished and when stipulated in a tree preservation plan, posts may be supported by a concrete base. (2) Area type to be fenced. Type I: Enclosure with chain link fencing of either the entire dripline area or at the tree protection zone (TPZ), when specified by a certified or consulting arborist. Type II: Enclosure for street trees located in a planter strip: chain link fence around the entire planter strip to the outer branches. Type III: Protection for a tree located in a small planter cutout only (such as downtown): orange plastic fencing shall be wrapped around the trunk from the ground to the first branch with 2-inch wooden boards bound securely on the outside. Caution shall be used to avoid damaging any bark or branches. (3) Duration of Type I, II, III fencing. Fencing shall be erected before demolition, grading or construction permits are issued and remain in place until the work is completed. Contractor shall first obtain the approval of the project arborist on record prior to removing a tree protection fence. (4) Warning sign. Each tree fence shall have prominently displayed an 8.5 x 11-inch sign stating: "Warning—Tree Protection Zone—this fence shall not be removed and is subject to penalty according to Town Code 29.10.1025". (b) All persons, shall comply with the following precautions: (1) Prior to the commencement of construction, install the fence at the dripline, or tree protection zone (TPZ) when specified in an approved arborist report, around any tree and/or vegetation to be retained which could be affected by the construction and prohibit any storage of construction materials or other materials, equipment cleaning, or parking of vehicles within the TPZ. The dripline shall not be altered in any way so as to increase the encroachment of the construction. (2) Prohibit all construction activities within the TPZ, including but not limited to: excavation, grading, drainage and leveling within the dripline of the tree unless approved by the Director. (3) Prohibit disposal or depositing of oil, gasoline, chemicals or other harmful materials within the dripline of or in drainage channels, swales or areas that may lead to the dripline of a protected tree. (4) Prohibit the attachment of wires, signs or ropes to any protected tree. (5) Design utility services and irrigation lines to be located outside of the dripline when feasible. (6) Retain the services of a certified or consulting arborist who shall serve as the project arborist for periodic monitoring of the project site and the health of those trees to be preserved. The project arborist shall be present whenever activities occur which may pose a potential threat to the health of the trees to be preserved and shall document all site visits. (7) The Director and project arborist shall be notified of any damage that occurs to a protected tree during construction so that proper treatment may be administered. (Ord. No. 2114, §§ I, II, 8-4-03)

05/08/2024

Licensed Arborist - W. M. Smith
WE-13625A

Arborist Report Amendment

Site Address - 50 Los Gatos-Saratoga Rd, Los Gatos CA

Site Visit - April 29th, 2024

Licensed arborist William Smith visited the property located at 50 Los Gatos - Saratoga Road, Los Gatos, in order to identify and assess all remaining trees that have a trunk diameter at breast height of 4 inches or greater.

The trees included in this tree inventory are coast live oak, ornamental pear, various fruit trees, crape myrtle, japanese maple, podocarpus, monterey pine, deodar cedar, mexican fan palm, atlas cedar, and various other landscape trees.

Respectfully Submitted,

William Smith

Tree Tag ID	Common Name	Species	D.B.H	Height	Crown Spread	Condition	Protection
5417	Ornamental Pear	<i>Pyrus calleryana</i>	4,2,2	11	9	Fair	Exempt
5418	Ornamental Pear	<i>Pyrus calleryana</i>	5	18	10	Fair	Exempt
5419	Loquat	<i>Eriobotrya japonica</i>	4,4	15	10	Fair	Exempt
5420	Coastal Live Oak	<i>Quercus agrifolia</i>	5	15	11	Good	Protected
5421	Yew Plum Pine	<i>Podocarpus macrophyllus</i>	5	12	5	Fair	Protected
5422	Yew Plum Pine	<i>Podocarpus macrophyllus</i>	4	12	5	Fair	Protected
5423	Mexican Fan Palm	<i>Washingtonia robusta</i>	6	6	7	Good	Exempt
5424	Privet	<i>Ligustrum lucidum</i>	4,3,3	12	8	Fair	Exempt
5425	Crepe Myrtle	<i>Lagerstroemia</i>	4	14	11	Good	Exempt
5426	Privet	<i>Ligustrum lucidum</i>	4	7	4	Poor	Exempt
5427	Privet	<i>Ligustrum lucidum</i>	5	10	4	Poor	Exempt
5428	Privet	<i>Ligustrum lucidum</i>	5	9	4	Fair	Exempt
5429	Privet	<i>Ligustrum lucidum</i>	4,5	8	5	Poor	Exempt
5430	Oleander	<i>Nerium oleander</i>	4,4,4	11	9	Good	Exempt
5431	Oleander	<i>Nerium oleander</i>	4,4,4	12	9	Good	Exempt
5432	Coastal Live Oak	<i>Quercus agrifolia</i>	4	10	6	Poor	Protected
5433	Privet	<i>Ligustrum lucidum</i>	3,3,2,2	10	5	Fair	Exempt
5434	Privet	<i>Ligustrum lucidum</i>	4,2	10	5	Fair	Exempt

5435	Privet	<i>Ligustrum lucidum</i>	4,3	10	6	Fair	Exempt
5436	Privet	<i>Ligustrum lucidum</i>	4	9	5	Fair	Exempt
5437	Privet	<i>Ligustrum lucidum</i>	4,4	15	7	Poor	Exempt
5438	Privet	<i>Ligustrum lucidum</i>	5	15	9	Good	Exempt
5439	Purple Leaf Plum	<i>Prunus cerasifera</i>	5	15	10	Poor	Exempt
5440	Purple Leaf Plum	<i>Prunus cerasifera</i>	4,3	15	15	Good	Exempt
5441	Blue Atlas Cedar	<i>Cedars atlantica</i>	4	18	6	Fair	Protected
5442	Privet	<i>Ligustrum lucidum</i>	5	20	10	Fair	Exempt
5443	Privet	<i>Ligustrum lucidum</i>	4	15	10	Fair	Exempt
5444	Privet	<i>Ligustrum lucidum</i>	4	10	8	Fair	Exempt
5445	Privet	<i>Ligustrum lucidum</i>	5	17	11	Fair	Exempt
5446	Privet	<i>Ligustrum lucidum</i>	5	13	13	Fair	Exempt
5447	Privet	<i>Ligustrum lucidum</i>	4,3,2	12	6	Fair	Exempt
5448	Privet	<i>Ligustrum lucidum</i>	4,3	8	6	Good	Exempt
5449	Privet	<i>Ligustrum lucidum</i>	5	11	10	Good	Exempt
5450	Italian Cypress	<i>Cupressus sempervirens</i>	4	20	4	Good	Protected
5451	Privet	<i>Ligustrum lucidum</i>	4,3	12	7	Good	Exempt
5452	Purple Leaf Plum	<i>Prunus cerasifera</i>	3,3	15	7	Good	Exempt
5453	Loquat	<i>Eriobotrya japonica</i>	4	21	7	Poor	Exempt

5454	Smoke Tree	<i>Cotinus coggygria</i>	5,4,3	7	7	Good	Protected
5455	Oleander	<i>Nerium oleander</i>	4,3,3, 3	10	8	Fair	Exempt
5456	Pomegranate	<i>Prunita granitum</i>	4,3,4, 4,3,3, 4	8	8	Good	Exempt
5457	Pomegranate	<i>Prunita granitum</i>	4,3,3, 3,2,2, 2	8	10	Fair	Exempt
5458	Pomegranate	<i>Prunita granitum</i>	3,3,2, 2,3,3, 4,3,3	9	8	Fair	Exempt
5459	Magnolia	<i>Magnolia grandiflora</i>	11	27	19	Fair	Protected
5460	Japanese Maple	<i>Acer palmate</i>	10,11	20	15	Fair	Protected
5461	Crepe Myrtle	<i>Lagerstroemia</i>	4	20	15	Good	Protected
5462	Coastal Live Oak	<i>Quercus agrifolia</i>	4,3	12	4	Poor	Protected
5463	Coastal Live Oak	<i>Quercus agrifolia</i>	4	18	8	Good	Protected
5464	Deodar Cedar	<i>Cedrus deodara</i>	12,11	50	45	Good	Protected
5465	Coastal Live Oak	<i>Quercus agrifolia</i>	6	21	15	Fair	Protected
5466	Coastal Live Oak	<i>Quercus agrifolia</i>	11	35	24	Good	Protected
5467	Coastal Live Oak	<i>Quercus agrifolia</i>	4	15	8	Fair	Protected
5468	Coastal Live Oak	<i>Quercus agrifolia</i>	5	30	10	Fair	Protected
5469	Coastal Live Oak	<i>Quercus agrifolia</i>	5	22	12	Good	Protected
5470	Blue Atlas Cedar	<i>Cedars atlantica</i>	5	30	15	Fair	Protected
5471	Blue Atlas Cedar	<i>Cedars atlantica</i>	4	30	8	Fair	Protected
5472	Coastal Live Oak	<i>Quercus agrifolia</i>	8	35	12	Poor	Protected

5473	Coastal Live Oak	<i>Quercus agrifolia</i>	6	24	7	Poor	Protected
5474	Coastal Live Oak	<i>Quercus agrifolia</i>	6	35	15	Fair	Protected
5475	Coastal Live Oak	<i>Quercus agrifolia</i>	5	27	9	Poor	Protected
5476	Coastal Live Oak	<i>Quercus agrifolia</i>	5,3	30	10	Poor	Protected
5477	Coastal Live Oak	<i>Quercus agrifolia</i>	4	25	10	Poor	Protected
5478	Coastal Live Oak	<i>Quercus agrifolia</i>	4	24	7	Poor	Protected
5479	Coastal Live Oak	<i>Quercus agrifolia</i>	4	28	8	Poor	Protected
5480	Coastal Live Oak	<i>Quercus agrifolia</i>	5	25	7	Poor	Protected
5481	Coastal Live Oak	<i>Quercus agrifolia</i>	5	22	10	Fair	Protected
5482	Coastal Live Oak	<i>Quercus agrifolia</i>	7	35	15	fair	Protected
5483	Privet	<i>Ligustrum lucidum</i>	4,5	25	9	Good	Protected
5484	Coastal Live Oak	<i>Quercus agrifolia</i>	4	20	7	Poor	Protected
5485	Coastal Live Oak	<i>Quercus agrifolia</i>	4	25	8	Poor	Protected
5486	Coastal Live Oak	<i>Quercus agrifolia</i>	5	25	10	Poor	Protected

Photographs and Observations

Tag 5417

This tree has a northern lean, the original main stem of this tree died, resulting in multiple epicormic shoots growing from the root flare that currently comprise the main uprights.



Tag 5418

This tree is growing along the perimeter chain-link fence. This tree has moderate die back in the canopy.



Tag 5419

Foliage from large neighboring eucalyptus trees are growing over the canopy. This tree has significant die back noted in the canopy due to lack of sunlight.



Tag 5420

The canopy of this tree is matted against the chain-link fence.



Tag 5421

Canopy of this tree is growing into the balcony of the property structure.



Tag 5422

This tree's canopy is growing with a significant northern lean, due to pruning of branches growing towards the structure to the south.



Tag 5423

No notable observations



Tag 5424

Tree has a large canker in the main stem. Significant die back noted in the canopy. Minor decay. Cavities noted throughout the uprights.



Tag 5425

No notable observations



Tag 5426

This tree has significant decay cavities, is in very poor condition.



Tag 5427

This tree has significant decay cavities, is in very poor condition.



Tag 5428

This tree has a significant southern lien, and is in very poor condition.



Tag 5429

There are two main uprights growing from the root flare. Significant decay on the main stems.



Tag 5430

Included bark between multiple uprights.



Tag 5431

Included bark between multiple uprights



Tag 5432

This tree has a significant eastern lean due to the canopy being shaded by neighboring trees.



Tag 5433

This tree has multiple uprights growing from the roof flare. This tree has included bark between two of the main uprights.



Tag 5434

The canopy of this tree is growing into the neighboring gazebo. This tree has two main uprights growing from the roof flare.



Tag 5435

This tree has two main uprights growing from the root flare.



Tag 5436

This tree is in poor health with a very sparse canopy. The limited foliage is due to having a lack of sunlight from neighboring trees over-shadowing the canopy.



Tag 5437

This tree has two main uprights growing from the root flare. This tree has multiple minor decay cavities noted on the main uprights.



Tag 5438

This tree has included bark at the first main crotch. This tree's canopy is growing into the neighboring gazebo.



Tag 5439

This tree has significant rot/decay cavity on the main stem, approximately 1 foot above grade. This tree has a significant southern lean.



Tag 5440

This tree has included bark between the two main uprights.



Tag 5441

This tree has a significant lean to the south, due to competition with neighboring trees.



Tag 5442

This tree has a lean to the west due to competition with neighboring Hollywood juniper tree.



Tag 5443

Moderate die back in the canopy. Majority of the foliage is on the southern side due to competition for light.



Tag 5444

Moderate die back in the canopy. Majority of the foliage on the north-western side due to competition for light.



Tag 5445

Sparse canopy due to competition for light.



Tag 5446

This tree has a significant eastern lean.



Tag 5447

This tree has significant die back in the canopy. This tree has multiple uprights growing from the root flare. There are crisscrossing and fused limbs noted in the canopy.



Tag 5448

This tree is growing up through a bush. The tree has a significant western lean. Major decay cavity noted along the main stem.



Tag 5449

This tree is growing into the deck of the adjacent property, and up through a landscape bush.



Tag 5450

No notable observations.



Tag 5451

Canopy of this tree is growing into neighboring chain-link fence. Canopy skirt of this tree is touching the ground.



Tag 5452

Canopy of this tree is growing into the neighboring stone pine. Multiple epicormic shoots are growing from the root flare.



Tag 5453

There is a significant decay cavity approximately 7 feet above grade, along the main stem, with fungal fruiting bodies.



Tag 5454

This tree has a significant lean to the west side, due to competition with the neighboring building for light.



Tag 5455

This tree has included bark between the major uprights. This tree has significant die back in the upper canopy.



Tag 5456

This tree has approximately seven uprights, growing from the root flare. Included bark noted in between many of the uprights.



Tag 5457

This tree has included bark between the uprights. Significant decay noted at the base of the major uprights, approximately 1 foot above grade.



Tag 5458

This tree has significant decay on many of the uprights at approximately 1 to 2 feet above grade. This tree has included bark between the major uprights.



Tag 5459

Moderate die back noted in the canopy.



Tag 5460

Moderate decay cavities noted on many of the branches in the upper canopy.



Tag 5461

Minor die noted in the canopy.



Tag 5462

This tree is in very poor condition.



Tag 5463

This coast live oak tree is growing at a significant eastern lean due to competition with neighboring coast live oak.



Tag 5464

This tree has two main uprights, growing from the root flare with included bark at the base of the trunks.



Tag 5465

Canopy of this tree has a northern lean. Minor deadwood noted in the canopy.



Tag 5466

This tree has two main uprights at approximately 10 feet above grade with included bark. Moderate die back noted in the canopy.



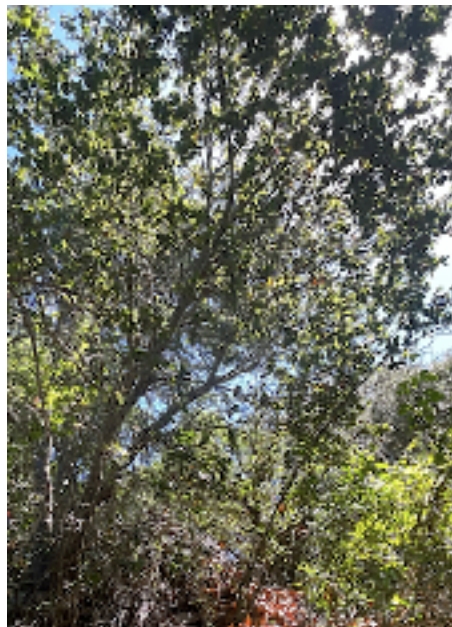
Tag 5467

This tree has a significant northern lean. Fungal damage noted in the canopy.



Tag 5468

Tree has western lean.



Tag 5469

This tree has two co-dominant uprights with included bark between them.

Bad visibility for a decent photograph

Tag 5470

This tree is two co-dominant uprights at approximately 15 feet above grade with included bark between them.



Tag 5471

This tree has one upright growing through the canopy of neighboring large oak tree.



Tag 5472

Ivy is growing up the trunk, and is girdling this tree. Significant die back in the upper canopy.



Tag 5473

Canopy of this tree is growing in a completely northern direction, and is very sparse due to competition for light.



Tag 5474

Moderate die back noted in the canopy. This tree has a very sparse canopy.



Tag 5475

This tree is growing under the neighboring canopies of the oak trees.



Tag 5476

The canopy of this tree is growing in a north-western direction. This tree has a very sparse canopy, and poor structure.



Tag 5477

This tree has fungal damage noted in the foliage of the canopy, the tree has a very sparse canopy.



Tag 5478

This tree is growing in an entirely northern direction due to competition for light.



Tag 5479

This tree's canopy is growing an entirely northern direction. Ivy is growing up the trunk and girdling the tree.



Tag 5480

The canopy of this tree is growing in an entirely western direction. Foliage is very sparse on this tree.



Tag 5481

This Live Oak is growing in a westward direction with a sparse canopy. This tree has a dead tree leaning into the canopy with Ivy growing up the dead tree.



Tag 5482

Canopy of this tree is growing in a northern direction. Moderate deadwood noted in the upper canopy.



Tag 5483

Canopy of this tree is growing into the neighboring live oak tree.



Tag 5484

This tree has a very sparse canopy.



Tag 5485

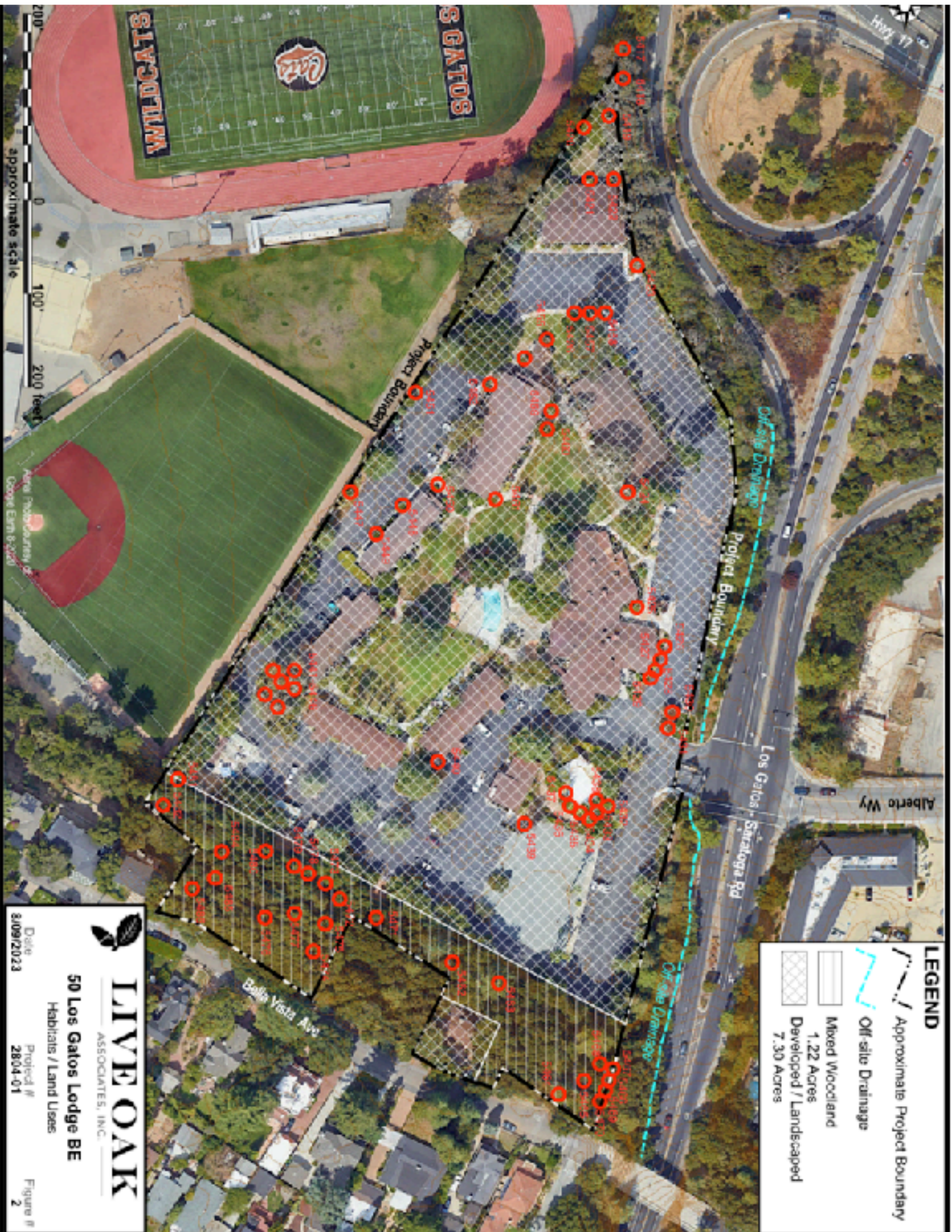
Canopy of this tree is growing in a northern direction. This tree has very sparse foliage in the canopy.



Tag 5486

This tree has a canopy with very sparse foliage growing in a western direction over the neighboring property.





LEGEND

-  Approximate Project Boundary
-  Off-site Drainage
-  Mixed Woodland
1.22 Acres
-  Developed / Landscaped
7.30 Acres

 **LIVE OAK**
ASSOCIATES, INC.

50 Los Gatos Lodge BE
Habitats / Land Uses

Date: 8/09/2023
Project #: 28/04-01
Figure #: 2

