

Oka Road, Los Gatos CA

Arborist Report 2024



Prepared For:
UC Oka Road LLC

Site: Oka Rd,
Los Gatos, CA



Submitted by:
David Beckham
Certified Arborist
WE#10724A
TRAQ Qualified



DAVID BECKHAM
WE#10724A



DAVID BECKHAM
WE#10724A

KIELTY

ARBORISTS SERVICES LLC

Certified Arborist WE#10724A TRAQ Qualified
P.O. Box 6187 San Mateo, CA 94403
650-532-4418

Date: June 28, 2024

Attn: UC Oka Road LLC
 Attn: Erik Hayden & Joshua Burroughs
 99 S. Almaden, Suite 500
 San Jose, CA, 95113
 Phone: 408-624-5423
 Site: Oka Rd, Los Gatos

Subject: Tree protection plan for Oka Rd, Los Gatos

Dear UC Oka Road LLC,



INTRODUCTION AND OVERVIEW

Kiely Arborists Services LLC visited the property at Oka Rd on June 25, 2024, to evaluate the trees present with respect to the proposed construction project. The report below contains the analysis of the site visit conducted on June 25, 2024. UC Oka Road LLC is planning to build 126 multi-family residential units in 18 attached townhome Buildings at Oka Rd. The current site consisted of an old Walnut orchard. The findings and recommendations presented in this report are based on the SB330 preliminary application dated 4/18/24 titled "Oka Rd, Los Gatos" by HMM. These plans were electronically provided to us via email. By thoroughly analyzing these plans in conjunction with our field observations, we have developed an accurate and reliable assessment of the tree conditions and how best to mitigate potential impacts.

Showing existing walnut orchard

376 trees were surveyed for writing this report. 4 trees are protected (#17, 64, 374*, and 375). One of the protected trees is considered a “**Large Protected Tree**” (#375). One of the protected trees is a neighboring tree (#374*)

Data Summary:

Total Trees	Protected Trees	Large Protected Trees
376	3	1

*Tree #253a was originally missed and added at the time of the survey visit on June 25, making the total tree # at 376.

All of the trees on the lot (375 trees) are proposed for removal, as they are in decline or conflict with proposed project features. Neighboring mulberry tree #374 is to be retained and should be retained and protected as detailed in the recommendations below. With proper protection and cultural practices, all retained trees are expected to survive and thrive during and after construction.

ASSIGNMENT

At the request of UC Oka Road LLC, Kielty Arborists Services LLC conducted a site visit on June 25, 2024 to prepare a comprehensive Tree Inventory Report/Tree Protection Plan for the proposed construction project. This report is a requirement when submitting plans to the town of Los Gatos. The analysis in this report is based on the plans received from HMH dated April 18, 2024.

The primary focus of this report is as follows:

- Identification and assessment of trees on the construction site that may be affected by the proposed development.
- Determination of potential impacts on tree health and stability, considering factors such as root damage and crown damage.
- Provision of recommendations for tree protection and preservation measures during the construction process to mitigate potential impacts.
- Ensuring compliance with local regulations pertaining to tree preservation, protection, and removal within the construction plans.

Please note that the report will provide specific details regarding tree assessments, impacts, and preservation measures.

The town of Los Gatos requires the following tree-reporting elements for development projects:

1. Map of tree locations.
2. Tree protection or removal recommendations for all protected trees.
3. Tree Protect Plan for all protected trees.

LIMITS OF THE ASSIGNMENT

As part of this assessment, it is important to note that Kielty Arborists Services LLC did not conduct an aerial inspection of the upper crown, a detailed root crown inspection, or a plant tissue analysis on the subject trees. Therefore, the information presented in this report does not include data obtained from these specific methods.

Furthermore, it is essential to clarify that no tree risk assessments were completed as part of this report unless stated otherwise. The focus of this assessment primarily centers on tree identification, general health evaluation, and the potential impacts of the proposed construction.

While the absence of these specific assessments limits the scope of the analysis, the findings and recommendations provided within this report are based on available information and observations made during the site visit.

METHOD OF INSPECTION

The inspections were conducted from the ground without climbing the trees. No tissue samples or root crown inspections were performed. The trees under consideration were identified based on the provided site plan. To assess the trees, their diameter at 54 inches above ground level (DBH or diameter at breast height) was measured using a D-Tape. For the surveying of multi-trunk trees, our methodology aligns with town ordinances. In cases where the town does not offer specific guidelines for measuring multi-trunk trees, we adhere to the standards outlined in the "Guide for Plant Appraisal, 10th Edition, Second Printing" by the Council of Tree and Landscape Appraisers. Additionally, the protected trees were evaluated for their health, structure, form, and suitability for preservation with the following explanation of the ratings:

EVALUATION FIELDS

Tree Tag #: Identification number for individual trees.	Protected Tree: Specifies whether the tree is protected by the city or county ordinance.
Height (ft.) / Canopy Spread (ft.): Measures both the height of the tree and the spread of its canopy.	Trunk (in.): Measures the primary trunk's diameter at the required height.
Comments: Any additional notes or observations about the tree.	Tree Picture: A photograph of the tree for visual assessment and record-keeping.
Preserve or Remove: Indicates the recommended action based on the tree's condition.	Common Name / Scientific Name: Specifies the name of the tree, both in common terms and scientific nomenclature.
If more than 1 Trunks, Total Diameter: If the tree has multiple trunks, this field indicates the combined diameter of all trunks.	6, 8, 10 Times the Diameter (ft.): Provides calculations based on the diameter to assist in various tree protection requirements.
Appraised Value: An unbiased estimate of the tree's worth is performed in accordance with the current edition of the Guide for Plant Appraisal by the Council of Tree and Landscape Appraisers.	

*Note that not all fields may be provided for every tree. Some might be left blank due to various reasons, such as lack of accessibility to the tree, incomplete data, or the parameter not being applicable for a particular tree.

<p>Tree Structure Ratings:</p> <p>Poor: Major uncorrectable structural flaws present; significant dead wood, decay, or multiple trunks; potentially hazardous lean.</p> <p>Fair: Structural flaws exist but less severe; issues like slight lean and crowding on trunk; some uncorrectable issues through pruning.</p> <p>Good: Minor flaws; mainly upright trunk, well-spaced branches; flaws correctable through pruning; symmetrical or mostly symmetrical canopy.</p>	<p>Tree Health Ratings:</p> <p>Poor: Minimal new growth; significant dieback and pest infestation; expected not to reach natural lifespan.</p> <p>Fair: Moderate new growth; canopy density 60-90%; potential external threats; not in decline but vulnerable.</p> <p>Good: Vigorous growth; healthy foliage; 90-100% canopy density; expected natural lifespan.</p>
<p>Suitability for Preservation:</p> <p>Poor: Adds little to landscape; poor health and potential hazards; unlikely to survive construction impacts.</p> <p>Fair: Contributes to landscape; survival possible with protection during minor construction impacts.</p> <p>Good: Valuable landscape asset; likely survival during minor to moderate construction impacts with protection.</p>	<p>Tree Form Ratings:</p> <p>Poor: Highly asymmetric or abnormal form; visually unappealing; little landscape function.</p> <p>Fair: Significant asymmetries; deviation from species norm; compromised function or aesthetics.</p> <p>Good: Near ideal form; minor deviations; consistent aesthetics and function in landscape.</p>

*Suitability for Preservation: This rating is based solely on the tree itself, irrespective of potential construction impacts.

Overall Condition Ratings:	
Very Poor	1-29
Poor	30-49
Fair	50-69
Good	70-89
Excellent	90-100

The trees were assigned a condition rating based on a combination of existing tree health, tree structure, and tree form using the following scale.

TREE INVENTORY SURVEY

Tree Tag #	Preserve or Remove	Protected Tree	Common Name	Scientific Name	Trunk (in.)	If more than 1 Trunk, Total Diameter	Height (ft.) / Canopy Spread (ft.)	Health Rating	Structural Rating	Form Rating	Overall Condition (0-100%)	Number of Replacement Trees (24" box)	Summary
1	(R)	-	English walnut	<i>Juglans regia</i>	1-1	2	8/5	Fair	Good	Good	70%	-	Young orchard tree, recently planted.
2	(R)	-	English walnut	<i>Juglans regia</i>	2.1	-	10/6	Fair	Good	Good	70%	-	Young orchard tree, recently planted.
3	(R)	-	English walnut	<i>Juglans regia</i>	3-4.2-4	11.2	12/12	Fair	Good	Good	70%	-	Orchard tree, well maintained for walnut production
4	(R)	-	English walnut	<i>Juglans regia</i>	3.2	-	12/10	Fair	Good	Good	70%	-	Orchard tree, well maintained for walnut production
5	(R)	-	English walnut	<i>Juglans regia</i>	6.8	-	14/14	Fair	Good	Good	70%	-	Orchard tree, well maintained for walnut production
6	(R)	-	English walnut	<i>Juglans regia</i>	3-3	6	12/12	Fair	Good	Good	70%	-	Orchard tree, well maintained for walnut production
7	(R)	-	English walnut	<i>Juglans regia</i>	7-5.3	12.3	14/14	Fair	Good	Good	70%	-	Orchard tree, well maintained for walnut production
8	(R)	-	English walnut	<i>Juglans regia</i>	4.5	-	12/12	Fair	Good	Good	70%	-	Orchard tree, well maintained for walnut production
9	(R)	-	English walnut	<i>Juglans regia</i>	3.8	-	12/6	Fair	Good	Good	70%	-	Orchard tree, well maintained for walnut production
10	(R)	-	English walnut	<i>Juglans regia</i>	5.8	-	14/12	Poor	Poor	Poor	0%	-	DEAD.
11	(R)	-	English walnut	<i>Juglans regia</i>	5.3	-	12/12	Poor	Poor	Fair	30%	-	Decay at root crown
12	(R)	-	English walnut	<i>Juglans regia</i>	2.0	-	10.8	Fair	Good	Good	70%	-	Young orchard tree, recently planted.
13	(R)	-	English walnut	<i>Juglans regia</i>	6-5	11	15/15	Fair	Good	Good	70%	-	Orchard tree, well maintained for walnut production
14	(R)	-	English walnut	<i>Juglans regia</i>	6.2	-	14/12	Fair	Good	Good	70%	-	Orchard tree, well maintained for walnut production
15	(R)	-	English walnut	<i>Juglans regia</i>	2.0	-	10/8	Fair	Good	Good	70%	-	Young orchard tree, recently planted.
16	(R)	-	English walnut	<i>Juglans regia</i>	2.5	-	10/8	Fair	Good	Good	70%	-	Young orchard tree, recently planted.
17	(R)	(P)	English walnut	<i>Juglans regia</i>	8-4.8-7.2	20	15/20	Fair	Good	Good	70%	3	Orchard tree, well maintained for walnut production
18	(R)	-	English walnut	<i>Juglans regia</i>	3-3-3	9	14/12	Fair	Good	Good	70%	-	Orchard tree, well maintained for walnut production
19	(R)	-	English walnut	<i>Juglans regia</i>	9.0	-	14/12	Fair	Fair	Fair	50%	-	Limb at 3' removed in the past with associated decay.
20	(R)	-	English walnut	<i>Juglans regia</i>	2-2-1	5	10/10	Fair	Good	Good	70%	-	Young orchard tree, recently planted.
21	(R)	-	English walnut	<i>Juglans regia</i>	8.5	-	15/15	Fair	Poor	Fair	50%	-	A large scar on a limb.
22	(R)	-	English walnut	<i>Juglans regia</i>	5.0	-	10/10	Poor	Fair	Fair	30%	-	Poor vigor.
23	(R)	-	English walnut	<i>Juglans regia</i>	2.0	-	8/8	Fair	Good	Good	70%	-	Young orchard tree, recently planted.
24	(R)	-	English walnut	<i>Juglans regia</i>	7.0	-	12/12	Fair	Good	Good	70%	-	Orchard tree, well maintained for walnut production

TREE INVENTORY SURVEY

Tree Tag #	Preserve or Remove	Protected Tree	Common Name	Scientific Name	Trunk (in.)	If more than 1 Trunk, Total Diameter	Height (ft.) / Canopy Spread (ft.)	Health Rating	Structural Rating	Form Rating	Overall Condition (0-100%)	Number of Replacement Trees (24" box)	Summary
25	(R)	-	English walnut	<i>Juglans regia</i>	1.0	-	5/4	Fair	Good	Good	70%	-	Young orchard tree, recently planted.
26	(R)	-	English walnut	<i>Juglans regia</i>	8.0	-	12/15	Fair	Good	Good	70%	-	Orchard tree, well maintained for walnut production
27	(R)	-	English walnut	<i>Juglans regia</i>	7.5	-	12/14	Fair-poor	Poor	Fair	30%	-	Decay at grade.
28	(R)	-	English walnut	<i>Juglans regia</i>	7.0	-	10/10	Fair	Good	Good	70%	-	Orchard tree, well maintained for walnut production
29	(R)	-	English walnut	<i>Juglans regia</i>	3-3	6	10/12	Fair	Good	Good	70%	-	Orchard tree, well maintained for walnut production
30	(R)	-	English walnut	<i>Juglans regia</i>	1.0	-	6/5	Fair	Good	Good	70%	-	Young orchard tree, recently planted.
31	(R)	-	English walnut	<i>Juglans regia</i>	3.0	-	12/10	Fair	Good	Good	70%	-	Orchard tree, well maintained for walnut production
32	(R)	-	English walnut	<i>Juglans regia</i>	1.0	-	5/4	Fair	Good	Good	70%	-	Young orchard tree, recently planted.
33	(R)	-	English walnut	<i>Juglans regia</i>	1.0	-	6/3	Fair	Good	Good	70%	-	Young orchard tree, recently planted.
34	(R)	-	English walnut	<i>Juglans regia</i>	5.2	-	12/10	Fair	Good	Good	70%	-	Orchard tree, well maintained for walnut production
35	(R)	-	English walnut	<i>Juglans regia</i>	4-3	7	10/12	Fair	Good	Good	70%	-	Orchard tree, well maintained for walnut production
36	(R)	-	English walnut	<i>Juglans regia</i>	1.0	-	6/5	Fair	Good	Good	70%	-	Young orchard tree, recently planted.
37	(R)	-	English walnut	<i>Juglans regia</i>	7.4	-	15/15	Fair	Good	Good	70%	-	Orchard tree, well maintained for walnut production
38	(R)	-	English walnut	<i>Juglans regia</i>	4-5	9	12./14	Fair	Good	Good	70%	-	Orchard tree, well maintained for walnut production
39	(R)	-	English walnut	<i>Juglans regia</i>	6.5	-	10/8	Poor	Poor	Poor	0%	-	DEAD
40	(R)	-	English walnut	<i>Juglans regia</i>	2-2-2	6	8/8	Fair	Good	Good	70%	-	Orchard tree, well maintained for walnut production
41	(R)	-	English walnut	<i>Juglans regia</i>	1.0	-	6/4	Fair	Good	Good	70%	-	Young orchard tree, recently planted.
42	(R)	-	English walnut	<i>Juglans regia</i>	6.4	-	12/12	Fair	Good	Good	70%	-	Orchard tree, well maintained for walnut production
43	(R)	-	English walnut	<i>Juglans regia</i>	5.5	-	12/10	Poor	Poor	Poor	0%	-	DEAD
44	(R)	-	English walnut	<i>Juglans regia</i>	1.0	-	8/5	Fair	Good	Good	70%	-	Young orchard tree, recently planted.
45	(R)	-	English walnut	<i>Juglans regia</i>	8.1	-	15/16	Fair	Good	Good	70%	-	Orchard tree, well maintained for walnut production
46	(R)	-	English walnut	<i>Juglans regia</i>	5.6	-	10/10	Fair	Good	Good	70%	-	Orchard tree, well maintained for walnut production
47	(R)	-	English walnut	<i>Juglans regia</i>	5.8	-	12/12	Fair	Good	Good	70%	-	Orchard tree, well maintained for walnut production
48	(R)	-	English walnut	<i>Juglans regia</i>	9.2	-	15/15	Fair	Good	Good	70%	-	Orchard tree, well maintained for walnut production

TREE INVENTORY SURVEY

Tree Tag #	Preserve or Remove	Protected Tree	Common Name	Scientific Name	Trunk (in.)	If more than 1 Trunk, Total Diameter	Height (ft.) / Canopy Spread (ft.)	Health Rating	Structural Rating	Form Rating	Overall Condition (0-100%)	Number of Replacement Trees (24" box)	Summary
49	(R)	-	English walnut	<i>Juglans regia</i>	3.2	-	10/8	Fair	Good	Good	70%	-	Orchard tree, well maintained for walnut production
50	(R)	-	English walnut	<i>Juglans regia</i>	8.5	-	15/15	Fair	Good	Good	70%	-	Orchard tree, well maintained for walnut production
51	(R)	-	English walnut	<i>Juglans regia</i>	1.5	-	7/6	Fair	Good	Good	70%	-	Young orchard tree, recently planted.
52	(R)	-	English walnut	<i>Juglans regia</i>	6.3	-	10/10	Fair	Good	Good	70%	-	Orchard tree, well maintained for walnut production
53	(R)	-	English walnut	<i>Juglans regia</i>	6.3	-	10/10	Fair	Good	Good	70%	-	Orchard tree, well maintained for walnut production
54	(R)	-	English walnut	<i>Juglans regia</i>	1.5	-	7.5	Fair	Good	Good	70%	-	Young orchard tree, recently planted.
55	(R)	-	English walnut	<i>Juglans regia</i>	1.5	-	7.5	Fair	Good	Good	70%	-	Young orchard tree, recently planted.
56	(R)	-	English walnut	<i>Juglans regia</i>	1.5	-	7.5	Fair	Good	Good	70%	-	Young orchard tree, recently planted.
57	(R)	-	English walnut	<i>Juglans regia</i>	3.8	-	4/0	Poor	Poor	Poor	0%	-	DEAD, Standing stump.
58	(R)	-	English walnut	<i>Juglans regia</i>	2.0	-	7/5	Fair	Good	Good	70%	-	Young orchard tree, recently planted.
59	(R)	-	English walnut	<i>Juglans regia</i>	3-3	6	8/5	Poor	Poor	Poor	0%	-	DEAD
60	(R)	-	English walnut	<i>Juglans regia</i>	1.0	-	6/4	Fair	Good	Good	70%	-	Young orchard tree, recently planted.
61	(R)	-	English walnut	<i>Juglans regia</i>	3-3	6	10/10	Poor	Poor	Poor	20%	-	Poor vigor, In decline.
62	(R)	-	English walnut	<i>Juglans regia</i>	1.0	-	8/5	Fair	Good	Good	70%	-	Young orchard tree, recently planted.
63	(R)	-	English walnut	<i>Juglans regia</i>	6.5	-	14/14	Fair	Good	Good	70%	-	Orchard tree, well maintained for walnut production
64	(R)	(P)	English walnut	<i>Juglans regia</i>	18.3	-	16/16	Poor	Poor	Poor	20%	3	Poor vigor, abundance of dead wood, in severe decline, history of limb loss.
65	(R)	-	English walnut	<i>Juglans regia</i>	9.7	-	15/15	Fair	Fair	Poor	50%	-	Suppressed by oak.
66	(R)	-	English walnut	<i>Juglans regia</i>	1.0	-	5/2	Fair	Good	Good	70%	-	Young orchard tree, recently planted.
67	(R)	-	English walnut	<i>Juglans regia</i>	5.1	-	12/10	Fair	Good	Good	70%	-	Orchard tree, well maintained for walnut production
68	(R)	-	English walnut	<i>Juglans regia</i>	2.2	-	8/8	Fair	Good	Good	70%	-	Young orchard tree, recently planted.
69	(R)	-	English walnut	<i>Juglans regia</i>	4.3-3.7	8	14/12	Fair	Good	Good	70%	-	Orchard tree, well maintained for walnut production
70	(R)	-	English walnut	<i>Juglans regia</i>	5.7	-	12/12	Fair	Good	Good	70%	-	Orchard tree, well maintained for walnut production
71	(R)	-	English walnut	<i>Juglans regia</i>	8.0	-	14/14	Fair	Good	Good	70%	-	Orchard tree, well maintained for walnut production
72	(R)	-	English walnut	<i>Juglans regia</i>	5.3	-	12/12	Fair	Good	Good	70%	-	Orchard tree, well maintained for walnut production

TREE INVENTORY SURVEY

Tree Tag #	Preserve or Remove	Protected Tree	Common Name	Scientific Name	Trunk (in.)	If more than 1 Trunk, Total Diameter	Height (ft.) / Canopy Spread (ft.)	Health Rating	Structural Rating	Form Rating	Overall Condition (0-100%)	Number of Replacement Trees (24" box)	Summary
73	(R)	-	English walnut	<i>Juglans regia</i>	4-3.5	7.5	12/10	Fair	Good	Good	70%	-	Orchard tree, well maintained for walnut production
74	(R)	-	English walnut	<i>Juglans regia</i>	2.0	-	8/5	Fair	Good	Good	70%	-	Young orchard tree, recently planted.
75	(R)	-	English walnut	<i>Juglans regia</i>	3-2	5	10/8	Fair	Good	Good	70%	-	Young orchard tree, recently planted.
76	(R)	-	English walnut	<i>Juglans regia</i>	2.0	-	8/6	Fair	Good	Good	70%	-	Young orchard tree, recently planted.
77	(R)	-	English walnut	<i>Juglans regia</i>	2.0	-	8/6	Fair	Good	Good	70%	-	Young orchard tree, recently planted.
78	(R)	-	English walnut	<i>Juglans regia</i>	2.0	-	8/6	Fair	Good	Good	70%	-	Young orchard tree, recently planted.
79	(R)	-	English walnut	<i>Juglans regia</i>	1.0	-	5/2	Fair	Good	Good	70%	-	Young orchard tree, recently planted.
80	(R)	-	English walnut	<i>Juglans regia</i>	2.0	-	7/5	Fair	Good	Good	70%	-	Young orchard tree, recently planted.
81	(R)	-	English walnut	<i>Juglans regia</i>	12.1	-	20/20	Fair	Good	Good	70%	-	Orchard tree, well maintained for walnut production
82	(R)	-	English walnut	<i>Juglans regia</i>	6.5-6.5	13	18/20	Fair	Good	Good	70%	-	Orchard tree, well maintained for walnut production
83	(R)	-	English walnut	<i>Juglans regia</i>	2.0	-	6/2	Fair	Good	Good	70%	-	Young orchard tree, recently planted.
84	(R)	-	English walnut	<i>Juglans regia</i>	16.1	-	18/15	Fair-poor	Poor	Fair	30%	-	Root rot observed.
85	(R)	-	English walnut	<i>Juglans regia</i>	2-2-2	6	10/8	Fair	Good	Good	70%	-	Orchard tree, well maintained for walnut production
86	(R)	-	English walnut	<i>Juglans regia</i>	1.0	-	5/2	Fair	Good	Good	70%	-	Young orchard tree, recently planted.
87	(R)	-	English walnut	<i>Juglans regia</i>	1.0	-	7/4	Fair	Good	Good	70%	-	Young orchard tree, recently planted.
88	(R)	-	English walnut	<i>Juglans regia</i>	2-2	4	7/6	Fair	Good	Good	70%	-	Young orchard tree, recently planted.
89	(R)	-	English walnut	<i>Juglans regia</i>	1.0	-	7/4	Fair	Good	Good	70%	-	Young orchard tree, recently planted.
90	(R)	-	English walnut	<i>Juglans regia</i>	3.8	-	10.7	Fair	Good	Good	70%	-	Orchard tree, well maintained for walnut production
91	(R)	-	English walnut	<i>Juglans regia</i>	2.2	-	8/4	Fair	Good	Good	70%	-	Young orchard tree, recently planted.
92	(R)	-	English walnut	<i>Juglans regia</i>	7-6	13	15/15	Fair	Good	Good	70%	-	Orchard tree, well maintained for walnut production
93	(R)	-	English walnut	<i>Juglans regia</i>	3.5	-	10/8	Fair	Good	Good	70%	-	Orchard tree, well maintained for walnut production
94	(R)	-	English walnut	<i>Juglans regia</i>	2.2	-	6/4	Poor	Poor	Fair	30%	-	History of limb loss, dead wood observed.
95	(R)	-	English walnut	<i>Juglans regia</i>	1.0	-	5/2	Fair	Good	Good	70%	-	Young orchard tree, recently planted.
96	(R)	-	English walnut	<i>Juglans regia</i>	1.0	-	5/2	Fair	Good	Good	70%	-	Young orchard tree, recently planted.

TREE INVENTORY SURVEY

Tree Tag #	Preserve or Remove	Protected Tree	Common Name	Scientific Name	Trunk (in.)	If more than 1 Trunk, Total Diameter	Height (ft.) / Canopy Spread (ft.)	Health Rating	Structural Rating	Form Rating	Overall Condition (0-100%)	Number of Replacement Trees (24" box)	Summary
97	(R)	-	English walnut	<i>Juglans regia</i>	7.5	-	14/12	Fair	Good	Good	70%	-	Orchard tree, well maintained for walnut production
98	(R)	-	English walnut	<i>Juglans regia</i>	5.2-4.5	9.7	12/12	Fair	Good	Good	70%	-	Orchard tree, well maintained for walnut production
99	(R)	-	English walnut	<i>Juglans regia</i>	2.3	-	10/8	Fair	Good	Good	70%	-	Young orchard tree, recently planted.
100	(R)	-	English walnut	<i>Juglans regia</i>	2.2	-	6/4	Fair	Good	Good	70%	-	Young orchard tree, recently planted.
101	(R)	-	English walnut	<i>Juglans regia</i>	7.0	-	14/14	Fair	Good	Good	70%	-	Orchard tree, well maintained for walnut production
102	(R)	-	English walnut	<i>Juglans regia</i>	6.3	-	12/12	Fair	Good	Good	70%	-	Orchard tree, well maintained for walnut production
103	(R)	-	English walnut	<i>Juglans regia</i>	5.3	-	14/12	Fair	Good	Good	70%	-	Orchard tree, well maintained for walnut production
104	(R)	-	English walnut	<i>Juglans regia</i>	2-2-2	6	10/6	Fair	Good	Good	70%	-	Orchard tree, well maintained for walnut production
105	(R)	-	English walnut	<i>Juglans regia</i>	2.2	-	8/5	Fair	Good	Good	70%	-	Young orchard tree, recently planted.
106	(R)	-	English walnut	<i>Juglans regia</i>	2-2-2	6	10/6	Fair	Good	Good	70%	-	Orchard tree, well maintained for walnut production
107	(R)	-	English walnut	<i>Juglans regia</i>	3.6	-	10/6	Poor	Poor	Poor	0%	-	DEAD
108	(R)	-	English walnut	<i>Juglans regia</i>	3.0	-	10/6	Fair	Fair	Fair	50%	-	Damage to trunk.
109	(R)	-	English walnut	<i>Juglans regia</i>	5.7	-	10/10	Poor	Poor	Fair	30%	-	Dead wood, limb loss, in decline.
110	(R)	-	English walnut	<i>Juglans regia</i>	6.2	-	12/10	Poor	Poor	Poor	0%	-	DEAD
111	(R)	-	English walnut	<i>Juglans regia</i>	9.1	-	14/12	Poor	Poor	Poor	30%	-	Codominant at 6' with actively splitting union.
112	(R)	-	English walnut	<i>Juglans regia</i>	1.0	-	6/3	Fair	Good	Good	70%	-	Young orchard tree, recently planted.
113	(R)	-	English walnut	<i>Juglans regia</i>	6.5	-	12/10	Poor	Poor	Fair	30%	-	Failed limbs with associated decay
114	(R)	-	English walnut	<i>Juglans regia</i>	2.0	-	8/6	Fair	Good	Good	70%	-	Young orchard tree, recently planted.
115	(R)	-	English walnut	<i>Juglans regia</i>	1.0	-	6/2	Fair	Good	Good	70%	-	Young orchard tree, recently planted.
116	(R)	-	English walnut	<i>Juglans regia</i>	1.0	-	5/2	Fair	Good	Good	70%	-	Young orchard tree, recently planted.
117	(R)	-	English walnut	<i>Juglans regia</i>	0.5	-	4/1	Poor	Poor	Poor	30%	-	In decline.
118	(R)	-	English walnut	<i>Juglans regia</i>	4-4	8	12/10	Fair	Good	Good	70%	-	Orchard tree, well maintained for walnut production
119	(R)	-	English walnut	<i>Juglans regia</i>	2.0	-	8/5	Fair	Good	Good	70%	-	Young orchard tree, recently planted.
120	(R)	-	English walnut	<i>Juglans regia</i>	4.0	-	10/8	Fair	Good	Good	70%	-	Orchard tree, well maintained for walnut production

TREE INVENTORY SURVEY

Tree Tag #	Preserve or Remove	Protected Tree	Common Name	Scientific Name	Trunk (in.)	If more than 1 Trunk, Total Diameter	Height (ft.) / Canopy Spread (ft.)	Health Rating	Structural Rating	Form Rating	Overall Condition (0-100%)	Number of Replacement Trees (24" box)	Summary
121	(R)	-	English walnut	<i>Juglans regia</i>	1.0	-	6/5	Fair	Good	Good	70%	-	Young orchard tree, recently planted.
122	(R)	-	English walnut	<i>Juglans regia</i>	3.4	-	10/8	Fair	Good	Good	70%	-	Orchard tree, well maintained for walnut production
123	(R)	-	English walnut	<i>Juglans regia</i>	1.5	-	4-Jun	Fair	Good	Good	70%	-	Young orchard tree, recently planted.
124	(R)	-	English walnut	<i>Juglans regia</i>	1.5	-	7/5	Fair	Good	Good	70%	-	Young orchard tree, recently planted.
125	(R)	-	English walnut	<i>Juglans regia</i>	1.2	-	8/4	Fair	Good	Good	70%	-	Young orchard tree, recently planted.
126	(R)	-	English walnut	<i>Juglans regia</i>	5.8	-	10/10	Fair	Good	Good	70%	-	Orchard tree, well maintained for walnut production
127	(R)	-	English walnut	<i>Juglans regia</i>	2-3	5	10/10	Fair	Good	Good	70%	-	Orchard tree, well maintained for walnut production
128	(R)	-	English walnut	<i>Juglans regia</i>	4.0	-	12/10	Fair	Good	Good	70%	-	Orchard tree, well maintained for walnut production
129	(R)	-	English walnut	<i>Juglans regia</i>	3.5-2.5	6	10/10	Poor	Poor	Poor	30%	-	In decline.
130	(R)	-	English walnut	<i>Juglans regia</i>	2-2-1	5	10/8	Fair	Good	Good	70%	-	Orchard tree, well maintained for walnut production
131	(R)	-	English walnut	<i>Juglans regia</i>	1.0	-	5/3	Fair	Good	Good	70%	-	Young orchard tree, recently planted.
132	(R)	-	English walnut	<i>Juglans regia</i>	2.5	-	10/5	Fair	Good	Good	70%	-	Orchard tree, well maintained for walnut production
133	(R)	-	English walnut	<i>Juglans regia</i>	1.5	-	6/3	Fair	Good	Good	70%	-	Young orchard tree, recently planted.
134	(R)	-	English walnut	<i>Juglans regia</i>	1.5	-	6/3	Fair	Good	Good	70%	-	Young orchard tree, recently planted.
135	(R)	-	English walnut	<i>Juglans regia</i>	1.5	-	6/3	Fair	Good	Good	70%	-	Young orchard tree, recently planted.
136	(R)	-	English walnut	<i>Juglans regia</i>	1.5	-	10/6	Fair	Good	Good	70%	-	Young orchard tree, recently planted.
137	(R)	-	English walnut	<i>Juglans regia</i>	2.2	-	7/5	Fair	Good	Good	70%	-	Young orchard tree, recently planted.
138	(R)	-	English walnut	<i>Juglans regia</i>	5.5	-	12/10	Poor	Poor	Poor	0%	-	DEAD
139	(R)	-	English walnut	<i>Juglans regia</i>	2-2-2	6	8/7	Fair	Good	Good	70%	-	Orchard tree, well maintained for walnut production
140	(R)	-	English walnut	<i>Juglans regia</i>	2	-	8/5	Fair	Good	Good	70%	-	Young orchard tree, recently planted.
141	(R)	-	English walnut	<i>Juglans regia</i>	4-3.5	7.5	15/15	Fair	Good	Good	70%	-	Orchard tree, well maintained for walnut production
142	(R)	-	English walnut	<i>Juglans regia</i>	6.0	-	12/12	Poor	Poor	Poor	10%	-	Nearly dead.
143	(R)	-	English walnut	<i>Juglans regia</i>	4.1	-	10/10	Fair	Good	Good	70%	-	Orchard tree, well maintained for walnut production
144	(R)	-	English walnut	<i>Juglans regia</i>	5.5	-	12/10	Fair	Good	Good	70%	-	Orchard tree, well maintained for walnut production

TREE INVENTORY SURVEY

Tree Tag #	Preserve or Remove	Protected Tree	Common Name	Scientific Name	Trunk (in.)	If more than 1 Trunk, Total Diameter	Height (ft.) / Canopy Spread (ft.)	Health Rating	Structural Rating	Form Rating	Overall Condition (0-100%)	Number of Replacement Trees (24" box)	Summary
145	(R)	-	English walnut	<i>Juglans regia</i>	1.0	-	5/2	Fair	Good	Good	70%	-	Young orchard tree, recently planted.
146	(R)	-	English walnut	<i>Juglans regia</i>	1.0	-	5/2	Fair	Good	Good	70%	-	Young orchard tree, recently planted.
147	(R)	-	English walnut	<i>Juglans regia</i>	4.8	-	14/12	Fair	Good	Good	70%	-	Orchard tree, well maintained for walnut production
148	(R)	-	English walnut	<i>Juglans regia</i>	1.0	-	5/1	Fair	Good	Good	70%	-	Young orchard tree, recently planted.
149	(R)	-	English walnut	<i>Juglans regia</i>	1.0	-	5/1	Fair	Good	Good	70%	-	Young orchard tree, recently planted.
150	(R)	-	English walnut	<i>Juglans regia</i>	2.0	-	8/5	Fair	Good	Good	70%	-	Young orchard tree, recently planted.
151	(R)	-	English walnut	<i>Juglans regia</i>	2.0	-	8/5	Fair	Good	Good	70%	-	Young orchard tree, recently planted.
152	(R)	-	English walnut	<i>Juglans regia</i>	2.5	-	7/4	Fair	Good	Good	70%	-	Young orchard tree, recently planted.
153	(R)	-	English walnut	<i>Juglans regia</i>	8.2	-	13/15	Fair	Good	Good	70%	-	Orchard tree, well maintained for walnut production
154	(R)	-	English walnut	<i>Juglans regia</i>	4.5	-	10/10	Fair	Good	Good	70%	-	Orchard tree, well maintained for walnut production
155	(R)	-	English walnut	<i>Juglans regia</i>	7.5	-	15/12	Fair	Poor	Fair	45%	-	Decay at root crown
156	(R)	-	English walnut	<i>Juglans regia</i>	1.0	-	6/3	Fair	Good	Good	70%	-	Young orchard tree, recently planted.
157	(R)	-	English walnut	<i>Juglans regia</i>	1.2	-	10/6	Fair	Good	Good	70%	-	Young orchard tree, recently planted.
158	(R)	-	English walnut	<i>Juglans regia</i>	1.2	-	7/5	Fair	Good	Good	70%	-	Young orchard tree, recently planted.
159	(R)	-	English walnut	<i>Juglans regia</i>	3.5	-	3/0	Poor	Poor	Poor	0%	-	DEAD, standing stump
160	(R)	-	English walnut	<i>Juglans regia</i>	3-3-3	9	12/12	Fair	Good	Good	70%	-	Orchard tree, well maintained for walnut production
161	(R)	-	English walnut	<i>Juglans regia</i>	6.2	-	12/12	Poor	Poor	Poor	0%	-	DEAD
162	(R)	-	English walnut	<i>Juglans regia</i>	2.0	-	8/4	Fair	Good	Good	70%	-	Young orchard tree, recently planted.
163	(R)	-	English walnut	<i>Juglans regia</i>	2.0	-	8/4	Fair	Good	Good	70%	-	Young orchard tree, recently planted.
164	(R)	-	English walnut	<i>Juglans regia</i>	9.5	-	15/15	Fair	Good	Good	70%	-	Orchard tree, well maintained for walnut production
165	(R)	-	English walnut	<i>Juglans regia</i>	4.0	-	10/8	Fair	Good	Good	70%	-	Orchard tree, well maintained for walnut production
166	(R)	-	English walnut	<i>Juglans regia</i>	3.5	-	10/8	Fair	Good	Good	70%	-	Orchard tree, well maintained for walnut production
167	(R)	-	English walnut	<i>Juglans regia</i>	1.0	-	6/3	Fair	Good	Good	70%	-	Young orchard tree, recently planted.
168	(R)	-	English walnut	<i>Juglans regia</i>	1.0	-	6/3	Fair	Good	Good	70%	-	Young orchard tree, recently planted.

TREE INVENTORY SURVEY

Tree Tag #	Preserve or Remove	Protected Tree	Common Name	Scientific Name	Trunk (in.)	If more than 1 Trunk, Total Diameter	Height (ft.) / Canopy Spread (ft.)	Health Rating	Structural Rating	Form Rating	Overall Condition (0-100%)	Number of Replacement Trees (24" box)	Summary
169	(R)	-	English walnut	<i>Juglans regia</i>	5.2	-	14/12	Fair	Good	Good	70%	-	Orchard tree, well maintained for walnut production
170	(R)	-	English walnut	<i>Juglans regia</i>	1.2	-	6/3	Fair	Good	Good	70%	-	Young orchard tree, recently planted.
171	(R)	-	English walnut	<i>Juglans regia</i>	7.0	-	12/12	Fair	Good	Good	70%	-	Orchard tree, well maintained for walnut production
172	(R)	-	English walnut	<i>Juglans regia</i>	8.2	-	14/14	Fair-poor	Fair	Fair	50%	-	Dead wood
173	(R)	-	English walnut	<i>Juglans regia</i>	1.0	-	6/2	Fair	Good	Good	70%	-	Young orchard tree, recently planted.
174	(R)	-	English walnut	<i>Juglans regia</i>	3.0	-	10/6	Fair	Good	Good	70%	-	Orchard tree, well maintained for walnut production
175	(R)	-	English walnut	<i>Juglans regia</i>	4.0	-	14/10	Fair	Good	Good	70%	-	Orchard tree, well maintained for walnut production
176	(R)	-	English walnut	<i>Juglans regia</i>	1.0	-	10/3	Fair	Good	Good	70%	-	Young orchard tree, recently planted.
177	(R)	-	English walnut	<i>Juglans regia</i>	4.5	-	12/12	Fair	Good	Good	70%	-	Orchard tree, well maintained for walnut production
178	(R)	-	English walnut	<i>Juglans regia</i>	6.8	-	14/12	Fair	Good	Good	70%	-	Orchard tree, well maintained for walnut production
179	(R)	-	English walnut	<i>Juglans regia</i>	2.5	-	10/8	Fair	Good	Good	70%	-	Young orchard tree, recently planted.
180	(R)	-	English walnut	<i>Juglans regia</i>	8.6	-	15/15	Poor	Fair	Fair	40%	-	Dead wood.
181	(R)	-	English walnut	<i>Juglans regia</i>	2.5	-	6/4	Fair	Good	Good	70%	-	Young orchard tree, recently planted.
182	(R)	-	English walnut	<i>Juglans regia</i>	2.5	-	6/4	Fair	Good	Good	70%	-	Young orchard tree, recently planted.
183	(R)	-	English walnut	<i>Juglans regia</i>	2.5	-	6/4	Fair	Good	Good	70%	-	Young orchard tree, recently planted.
184	(R)	-	English walnut	<i>Juglans regia</i>	7.5	-	15/15	Fair	Good	Good	70%	-	Orchard tree, well maintained for walnut production
185	(R)	-	English walnut	<i>Juglans regia</i>	7.7	-	14/14	Fair	Good	Good	70%	-	Orchard tree, well maintained for walnut production
186	(R)	-	English walnut	<i>Juglans regia</i>	1.0	-	6/3	Fair	Good	Good	70%	-	Young orchard tree, recently planted.
187	(R)	-	English walnut	<i>Juglans regia</i>	4.9	-	12/10	Poor	Poor	Fair	30%	-	Decay at root crown, dead wood.
188	(R)	-	English walnut	<i>Juglans regia</i>	5.5	-	12/10	Fair	Good	Good	70%	-	Orchard tree, well maintained for walnut production
189	(R)	-	English walnut	<i>Juglans regia</i>	5.3	-	10/10	Poor	Poor	Poor	0%	-	DEAD
190	(R)	-	English walnut	<i>Juglans regia</i>	4-3.5	7.5	12/12	Fair	Good	Good	70%	-	Orchard tree, well maintained for walnut production
191	(R)	-	English walnut	<i>Juglans regia</i>	2.5	-	10/8	Fair	Good	Good	70%	-	Orchard tree, well maintained for walnut production
192	(R)	-	English walnut	<i>Juglans regia</i>	6.5	-	14/12	Fair	Good	Good	70%	-	Orchard tree, well maintained for walnut production

TREE INVENTORY SURVEY

Tree Tag #	Preserve or Remove	Protected Tree	Common Name	Scientific Name	Trunk (in.)	If more than 1 Trunk, Total Diameter	Height (ft.) / Canopy Spread (ft.)	Health Rating	Structural Rating	Form Rating	Overall Condition (0-100%)	Number of Replacement Trees (24" box)	Summary
193	(R)	-	English walnut	<i>Juglans regia</i>	4.0	-	10/6	Fair	Good	Good	70%	-	Orchard tree, well maintained for walnut production
194	(R)	-	English walnut	<i>Juglans regia</i>	8.5	-	15/15	Fair	Good	Good	70%	-	Orchard tree, well maintained for walnut production
195	(R)	-	English walnut	<i>Juglans regia</i>	1.0	-	6/3	Fair	Good	Good	70%	-	Young orchard tree, recently planted.
196	(R)	-	English walnut	<i>Juglans regia</i>	3.5	-	10/8	Fair	Good	Good	70%	-	Orchard tree, well maintained for walnut production
197	(R)	-	English walnut	<i>Juglans regia</i>	3.5	-	10/8	Fair	Good	Good	70%	-	Orchard tree, well maintained for walnut production
198	(R)	-	English walnut	<i>Juglans regia</i>	3.5	-	10/8	Fair	Good	Good	70%	-	Orchard tree, well maintained for walnut production
199	(R)	-	English walnut	<i>Juglans regia</i>	3.5	-	10/8	Fair	Good	Good	70%	-	Orchard tree, well maintained for walnut production
200	(R)	-	English walnut	<i>Juglans regia</i>	5.0	-	12/12	Fair	Good	Good	70%	-	Orchard tree, well maintained for walnut production
201	(R)	-	English walnut	<i>Juglans regia</i>	1.5	-	8/5	Fair	Good	Good	70%	-	Orchard tree, well maintained for walnut production
202	(R)	-	English walnut	<i>Juglans regia</i>	4.0	-	12/10	Fair	Good	Good	70%	-	Orchard tree, well maintained for walnut production
203	(R)	-	English walnut	<i>Juglans regia</i>	3.0	-	10/8	Fair	Good	Good	70%	-	Orchard tree, well maintained for walnut production
204	(R)	-	English walnut	<i>Juglans regia</i>	3.0	-	10/8	Fair	Good	Good	70%	-	Orchard tree, well maintained for walnut production
205	(R)	-	English walnut	<i>Juglans regia</i>	3.0	-	10/8	Fair	Good	Good	70%	-	Orchard tree, well maintained for walnut production
206	(R)	-	English walnut	<i>Juglans regia</i>	9.5	-	15/15	Poor	Poor	Fair	30%	-	Decay at codominant union
207	(R)	-	English walnut	<i>Juglans regia</i>	3.0	-	10/8	Fair	Good	Good	70%	-	Orchard tree, well maintained for walnut production
208	(R)	-	English walnut	<i>Juglans regia</i>	4.0	-	10/6	Fair	Good	Good	70%	-	Orchard tree, well maintained for walnut production
209	(R)	-	English walnut	<i>Juglans regia</i>	2.5	-	8/6	Fair	Good	Good	70%	-	Orchard tree, well maintained for walnut production
210	(R)	-	English walnut	<i>Juglans regia</i>	1.3	-	6/3	Fair	Good	Good	70%	-	Orchard tree, well maintained for walnut production
211	(R)	-	English walnut	<i>Juglans regia</i>	1.3	-	6/3	Fair	Good	Good	70%	-	Orchard tree, well maintained for walnut production
212	(R)	-	English walnut	<i>Juglans regia</i>	2.5	-	8/6	Fair	Good	Good	70%	-	Orchard tree, well maintained for walnut production
213	(R)	-	English walnut	<i>Juglans regia</i>	4.5	-	10/12	Fair	Good	Good	70%	-	Orchard tree, well maintained for walnut production
214	(R)	-	English walnut	<i>Juglans regia</i>	2.0	-	7/5	Fair	Good	Good	70%	-	Orchard tree, well maintained for walnut production
215	(R)	-	English walnut	<i>Juglans regia</i>	2.0	-	7/5	Fair	Good	Good	70%	-	Orchard tree, well maintained for walnut production
216	(R)	-	English walnut	<i>Juglans regia</i>	2.0	-	7/5	Fair	Good	Good	70%	-	Orchard tree, well maintained for walnut production

TREE INVENTORY SURVEY

Tree Tag #	Preserve or Remove	Protected Tree	Common Name	Scientific Name	Trunk (in.)	If more than 1 Trunk, Total Diameter	Height (ft.) / Canopy Spread (ft.)	Health Rating	Structural Rating	Form Rating	Overall Condition (0-100%)	Number of Replacement Trees (24" box)	Summary
217	(R)	-	English walnut	<i>Juglans regia</i>	2.0	-	7/5	Fair	Good	Good	70%	-	Orchard tree, well maintained for walnut production
218	(R)	-	English walnut	<i>Juglans regia</i>	5.0	-	14/14	Fair	Good	Good	70%	-	Orchard tree, well maintained for walnut production
219	(R)	-	English walnut	<i>Juglans regia</i>	6.5	-	14/14	Fair	Good	Good	70%	-	Orchard tree, well maintained for walnut production
220	(R)	-	English walnut	<i>Juglans regia</i>	4.3	-	10/10	Fair	Good	Good	70%	-	Orchard tree, well maintained for walnut production
221	(R)	-	English walnut	<i>Juglans regia</i>	4.0	-	5/0	Poor	Poor	Poor	0%	-	DEAD, Standing stump.
222	(R)	-	English walnut	<i>Juglans regia</i>	9.0	-	15/15	Fair	Good	Good	70%	-	Orchard tree, well maintained for walnut production
223	(R)	-	English walnut	<i>Juglans regia</i>	3.0	-	10/8	Fair	Good	Good	70%	-	Orchard tree, well maintained for walnut production
224	(R)	-	English walnut	<i>Juglans regia</i>	3.0	-	10/8	Fair	Good	Good	70%	-	Orchard tree, well maintained for walnut production
225	(R)	-	English walnut	<i>Juglans regia</i>	2.5	-	10/8	Fair	Good	Good	70%	-	Orchard tree, well maintained for walnut production
226	(R)	-	English walnut	<i>Juglans regia</i>	1.5	-	7/5	Fair	Good	Good	70%	-	Orchard tree, well maintained for walnut production
227	(R)	-	English walnut	<i>Juglans regia</i>	11.7	-	15/12	Fair	Good	Good	70%	-	Orchard tree, well maintained for walnut production
228	(R)	-	English walnut	<i>Juglans regia</i>	4.1	-	10/10	Fair	Good	Good	70%	-	Orchard tree, well maintained for walnut production
229	(R)	-	English walnut	<i>Juglans regia</i>	4.4	-	12/10	Fair	Good	Good	70%	-	Orchard tree, well maintained for walnut production
230	(R)	-	English walnut	<i>Juglans regia</i>	1.0	-	5/2	Fair	Good	Good	70%	-	Orchard tree, well maintained for walnut production
231	(R)	-	English walnut	<i>Juglans regia</i>	1.0	-	5/2	Fair	Good	Good	70%	-	Orchard tree, well maintained for walnut production
232	(R)	-	English walnut	<i>Juglans regia</i>	7.0	-	10/10	Fair	Good	Good	70%	-	Orchard tree, well maintained for walnut production
233	(R)	-	English walnut	<i>Juglans regia</i>	2.5	-	8/5	Fair	Good	Good	70%	-	Orchard tree, well maintained for walnut production
234	(R)	-	English walnut	<i>Juglans regia</i>	14.8	-	20/20	Poor	Fair	Fair	50%	-	Dead wood
235	(R)	-	English walnut	<i>Juglans regia</i>	3.2	-	8/6	Fair	Good	Good	70%	-	Orchard tree, well maintained for walnut production
236	(R)	-	English walnut	<i>Juglans regia</i>	2.0	-	7/5	Fair	Good	Good	70%	-	Orchard tree, well maintained for walnut production
237	(R)	-	English walnut	<i>Juglans regia</i>	1.5	-	7/5	Fair	Good	Good	70%	-	Orchard tree, well maintained for walnut production
238	(R)	-	English walnut	<i>Juglans regia</i>	5.6	-	14/12	Fair	Good	Good	70%	-	Orchard tree, well maintained for walnut production
239	(R)	-	English walnut	<i>Juglans regia</i>	4.6	-	10/10	Fair	Good	Good	70%	-	Orchard tree, well maintained for walnut production
240	(R)	-	English walnut	<i>Juglans regia</i>	4.5	-	10/10	Fair	Good	Good	70%	-	Orchard tree, well maintained for walnut production

TREE INVENTORY SURVEY

Tree Tag #	Preserve or Remove	Protected Tree	Common Name	Scientific Name	Trunk (in.)	If more than 1 Trunk, Total Diameter	Height (ft.) / Canopy Spread (ft.)	Health Rating	Structural Rating	Form Rating	Overall Condition (0-100%)	Number of Replacement Trees (24" box)	Summary
241	(R)	-	English walnut	<i>Juglans regia</i>	4.0	-	12/10	Fair	Good	Good	70%	-	Orchard tree, well maintained for walnut production
242	(R)	-	English walnut	<i>Juglans regia</i>	3.8	-	10/8	Fair	Good	Good	70%	-	Orchard tree, well maintained for walnut production
243	(R)	-	English walnut	<i>Juglans regia</i>	1.5	-	6/3	Fair	Good	Good	70%	-	Orchard tree, well maintained for walnut production
244	(R)	-	English walnut	<i>Juglans regia</i>	1.5	-	6/3	Fair	Good	Good	70%	-	Orchard tree, well maintained for walnut production
245	(R)	-	English walnut	<i>Juglans regia</i>	1.5	-	6/3	Fair	Good	Good	70%	-	Orchard tree, well maintained for walnut production
246	(R)	-	English walnut	<i>Juglans regia</i>	8.0	-	16/15	Fair	Good	Good	70%	-	Orchard tree, well maintained for walnut production
247	(R)	-	English walnut	<i>Juglans regia</i>	1.0	-	6/3	Fair	Good	Good	70%	-	Orchard tree, well maintained for walnut production
248	(R)	-	English walnut	<i>Juglans regia</i>	2.2	-	8/7	Fair	Good	Good	70%	-	Orchard tree, well maintained for walnut production
249	(R)	-	English walnut	<i>Juglans regia</i>	3.2	-	10/10	Fair	Good	Good	70%	-	Orchard tree, well maintained for walnut production
250	(R)	-	English walnut	<i>Juglans regia</i>	6.3	-	14/14	Fair	Good	Good	70%	-	Orchard tree, well maintained for walnut production
251	(R)	-	English walnut	<i>Juglans regia</i>	3.9	-	8/7	Fair	Good	Good	70%	-	Orchard tree, well maintained for walnut production
252	(R)	-	English walnut	<i>Juglans regia</i>	8.3	-	16/15	Fair	Poor	Fair	40%	-	Decay at root crown
253	(R)	-	English walnut	<i>Juglans regia</i>	3.2	-	10/10	Fair	Good	Good	70%	-	Orchard tree, well maintained for walnut production
253A	(R)	-	English walnut	<i>Juglans regia</i>	3.2	-	10/10	Fair	Good	Good	70%	-	Orchard tree, well maintained for walnut production
254	(R)	-	English walnut	<i>Juglans regia</i>	1.5	-	8/5	Fair	Good	Good	70%	-	Orchard tree, well maintained for walnut production
255	(R)	-	English walnut	<i>Juglans regia</i>	5.7	-	12/12	Poor	Fair	Fair	45%	-	Dead wood
256	(R)	-	English walnut	<i>Juglans regia</i>	2.1	-	10/8	Fair	Good	Good	70%	-	Orchard tree, well maintained for walnut production
257	(R)	-	English walnut	<i>Juglans regia</i>	7.0	-	14/12	Fair	Good	Good	70%	-	Orchard tree, well maintained for walnut production
258	(R)	-	English walnut	<i>Juglans regia</i>	2.5	-	10/8	Fair	Good	Good	70%	-	Orchard tree, well maintained for walnut production
259	(R)	-	English walnut	<i>Juglans regia</i>	6.0	-	12/12	Fair	Fair	Fair	45%	-	Decay on trunk.
260	(R)	-	English walnut	<i>Juglans regia</i>	3.0	-	10/8	Fair	Good	Good	70%	-	Orchard tree, well maintained for walnut production
261	(R)	-	English walnut	<i>Juglans regia</i>	7.5	-	15/15	Fair	Good	Good	70%	-	Orchard tree, well maintained for walnut production
262	(R)	-	English walnut	<i>Juglans regia</i>	6.5	-	12/10	Poor	Poor	Poor	0%	-	DEAD
263	(R)	-	English walnut	<i>Juglans regia</i>	3.8	-	10/10	Fair	Good	Good	70%	-	Orchard tree, well maintained for walnut production

TREE INVENTORY SURVEY

Tree Tag #	Preserve or Remove	Protected Tree	Common Name	Scientific Name	Trunk (in.)	If more than 1 Trunk, Total Diameter	Height (ft.) / Canopy Spread (ft.)	Health Rating	Structural Rating	Form Rating	Overall Condition (0-100%)	Number of Replacement Trees (24" box)	Summary
264	(R)	-	English walnut	<i>Juglans regia</i>	1.2	-	7/4	Fair	Good	Good	70%	-	Orchard tree, well maintained for walnut production
265	(R)	-	English walnut	<i>Juglans regia</i>	1.2	-	7/4	Fair	Good	Good	70%	-	Orchard tree, well maintained for walnut production
266	(R)	-	English walnut	<i>Juglans regia</i>	1.2	-	7/4	Fair	Good	Good	70%	-	Orchard tree, well maintained for walnut production
267	(R)	-	English walnut	<i>Juglans regia</i>	3.0	-	10/3	Poor	Poor	Poor	0%	-	DEAD
268	(R)	-	English walnut	<i>Juglans regia</i>	4.2	-	10/10	Fair	Good	Good	70%	-	Orchard tree, well maintained for walnut production
269	(R)	-	English walnut	<i>Juglans regia</i>	4.5-4.5-4.5	13.5	14/12	Fair	Good	Good	70%	-	Orchard tree, well maintained for walnut production
270	(R)	-	English walnut	<i>Juglans regia</i>	2.5	-	6/6	Fair	Good	Good	70%	-	Orchard tree, well maintained for walnut production
271	(R)	-	English walnut	<i>Juglans regia</i>	1.0	-	5/1	Fair	Good	Good	70%	-	Orchard tree, well maintained for walnut production
272	(R)	-	English walnut	<i>Juglans regia</i>	2.5	-	12/8	Fair	Good	Good	70%	-	Orchard tree, well maintained for walnut production
273	(R)	-	English walnut	<i>Juglans regia</i>	4.0	-	10/10	Fair	Good	Good	70%	-	Orchard tree, well maintained for walnut production
274	(R)	-	English walnut	<i>Juglans regia</i>	1.0	-	6/4	Fair	Good	Good	70%	-	Orchard tree, well maintained for walnut production
275	(R)	-	English walnut	<i>Juglans regia</i>	1.0	-	6/4	Fair	Good	Good	70%	-	Orchard tree, well maintained for walnut production
276	(R)	-	English walnut	<i>Juglans regia</i>	2.5	-	12/8	Fair	Good	Good	70%	-	Orchard tree, well maintained for walnut production
277	(R)	-	English walnut	<i>Juglans regia</i>	1.0	-	7/3	Fair	Good	Good	70%	-	Orchard tree, well maintained for walnut production
278	(R)	-	English walnut	<i>Juglans regia</i>	1.0	-	7/3	Fair	Good	Good	70%	-	Orchard tree, well maintained for walnut production
279	(R)	-	English walnut	<i>Juglans regia</i>	12.0	-	20/20	Poor	Fair	Fair	45%	-	Dead wood
280	(R)	-	English walnut	<i>Juglans regia</i>	5.0	-	10/8	Poor	Poor	Poor	30%	-	Dead wood and decay at root crown
281	(R)	-	English walnut	<i>Juglans regia</i>	4.1	-	7/6	Fair	Good	Good	70%	-	Orchard tree, well maintained for walnut production
282	(R)	-	English walnut	<i>Juglans regia</i>	5.0	-	14/12	Fair	Good	Good	70%	-	Orchard tree, well maintained for walnut production
283	(R)	-	English walnut	<i>Juglans regia</i>	8.0	-	15/14	Poor	Fair	Fair	45%	-	Dead wood
284	(R)	-	English walnut	<i>Juglans regia</i>	4.0	-	12/10	Fair	Good	Good	70%	-	Orchard tree, well maintained for walnut production
285	(R)	-	English walnut	<i>Juglans regia</i>	2.0	-	8/6	Fair	Good	Good	70%	-	Orchard tree, well maintained for walnut production
286	(R)	-	English walnut	<i>Juglans regia</i>	5.6	-	14/12	Fair	Good	Good	70%	-	Orchard tree, well maintained for walnut production
287	(R)	-	English walnut	<i>Juglans regia</i>	5.4	-	12/10	Fair	Good	Good	70%	-	Orchard tree, well maintained for walnut production

TREE INVENTORY SURVEY

Tree Tag #	Preserve or Remove	Protected Tree	Common Name	Scientific Name	Trunk (in.)	If more than 1 Trunk, Total Diameter	Height (ft.) / Canopy Spread (ft.)	Health Rating	Structural Rating	Form Rating	Overall Condition (0-100%)	Number of Replacement Trees (24" box)	Summary
288	(R)	-	English walnut	<i>Juglans regia</i>	2.5	-	8/8	Fair	Good	Good	70%	-	Orchard tree, well maintained for walnut production
289	(R)	-	English walnut	<i>Juglans regia</i>	6.5	-	14/12	Fair	Good	Good	70%	-	Orchard tree, well maintained for walnut production
290	(R)	-	English walnut	<i>Juglans regia</i>	1.2	-	6/4	Fair	Good	Good	70%	-	Orchard tree, well maintained for walnut production
291	(R)	-	English walnut	<i>Juglans regia</i>	6.2	-	12/10	Fair	Good	Good	70%	-	Orchard tree, well maintained for walnut production
292	(R)	-	English walnut	<i>Juglans regia</i>	4.5	-	14/12	Fair	Good	Good	70%	-	Orchard tree, well maintained for walnut production
293	(R)	-	English walnut	<i>Juglans regia</i>	4.2	-	10/10	Fair	Poor	Fair	45%	-	Decay at root crown
294	(R)	-	English walnut	<i>Juglans regia</i>	1.0	-	5/2	Fair	Good	Good	70%	-	Orchard tree, well maintained for walnut production
295	(R)	-	English walnut	<i>Juglans regia</i>	1.0	-	5/2	Fair	Good	Good	70%	-	Orchard tree, well maintained for walnut production
296	(R)	-	English walnut	<i>Juglans regia</i>	4.0	-	12/10	Fair	Good	Good	70%	-	Orchard tree, well maintained for walnut production
297	(R)	-	English walnut	<i>Juglans regia</i>	4.0	-	12/8	Fair	Good	Good	70%	-	Orchard tree, well maintained for walnut production
298	(R)	-	English walnut	<i>Juglans regia</i>	2.5	-	10/6	Fair	Good	Good	70%	-	Orchard tree, well maintained for walnut production
299	(R)	-	English walnut	<i>Juglans regia</i>	3.0	-	8/6	Fair	Good	Good	70%	-	Orchard tree, well maintained for walnut production
300	(R)	-	English walnut	<i>Juglans regia</i>	1.0	-	5/2	Fair	Good	Good	70%	-	Orchard tree, well maintained for walnut production
301	(R)	-	English walnut	<i>Juglans regia</i>	3.0	-	8/6	Fair	Good	Good	70%	-	Orchard tree, well maintained for walnut production
302	(R)	-	English walnut	<i>Juglans regia</i>	1.0	-	5/2	Fair	Good	Good	70%	-	Orchard tree, well maintained for walnut production
303	(R)	-	English walnut	<i>Juglans regia</i>	1.0	-	7/3	Fair	Good	Good	70%	-	Orchard tree, well maintained for walnut production
304	(R)	-	English walnut	<i>Juglans regia</i>	1.0	-	7/3	Fair	Good	Good	70%	-	Orchard tree, well maintained for walnut production
305	(R)	-	English walnut	<i>Juglans regia</i>	3.4	-	10/8	Fair	Good	Good	70%	-	Orchard tree, well maintained for walnut production
306	(R)	-	English walnut	<i>Juglans regia</i>	3.0	-	10/8	Fair	Good	Good	70%	-	Orchard tree, well maintained for walnut production
307	(R)	-	English walnut	<i>Juglans regia</i>	3.0	-	10/8	Fair	Good	Good	70%	-	Orchard tree, well maintained for walnut production
308	(R)	-	English walnut	<i>Juglans regia</i>	3.0	-	10/8	Fair	Good	Good	70%	-	Orchard tree, well maintained for walnut production
309	(R)	-	English walnut	<i>Juglans regia</i>	3.0	-	10/8	Fair	Good	Good	70%	-	Orchard tree, well maintained for walnut production
310	(R)	-	English walnut	<i>Juglans regia</i>	3.0	-	10/8	Fair	Good	Good	70%	-	Orchard tree, well maintained for walnut production
311	(R)	-	English walnut	<i>Juglans regia</i>	3.0	-	10/8	Fair	Good	Good	70%	-	Orchard tree, well maintained for walnut production

TREE INVENTORY SURVEY

Tree Tag #	Preserve or Remove	Protected Tree	Common Name	Scientific Name	Trunk (in.)	If more than 1 Trunk, Total Diameter	Height (ft.) / Canopy Spread (ft.)	Health Rating	Structural Rating	Form Rating	Overall Condition (0-100%)	Number of Replacement Trees (24" box)	Summary
312	(R)	-	English walnut	<i>Juglans regia</i>	1.0	-	5/2	Fair	Good	Good	70%	-	Orchard tree, well maintained for walnut production
313	(R)	-	English walnut	<i>Juglans regia</i>	6-6.5	12.5	20/20	Fair	Good	Good	70%	-	Orchard tree, well maintained for walnut production
314	(R)	-	English walnut	<i>Juglans regia</i>	4.3	-	14/8	Fair	Good	Good	70%	-	Orchard tree, well maintained for walnut production
315	(R)	-	English walnut	<i>Juglans regia</i>	4-4-4	12	14/14	Poor	Fair	Fair	45%	-	Dead wood
316	(R)	-	English walnut	<i>Juglans regia</i>	4.0	-	12/12	Fair	Good	Good	70%	-	Orchard tree, well maintained for walnut production
317	(R)	-	English walnut	<i>Juglans regia</i>	1.0	-	5/2	Fair	Good	Good	70%	-	Orchard tree, well maintained for walnut production
318	(R)	-	English walnut	<i>Juglans regia</i>	7.3	-	15/12	Fair	Good	Good	70%	-	Orchard tree, well maintained for walnut production
319	(R)	-	English walnut	<i>Juglans regia</i>	1.0	-	8/4	Fair	Good	Good	70%	-	Orchard tree, well maintained for walnut production
320	(R)	-	English walnut	<i>Juglans regia</i>	6.7	-	14/14	Fair	Good	Good	60%	-	Undermined by ground squirrels
321	(R)	-	English walnut	<i>Juglans regia</i>	13.2	-	20/20	Poor	Poor	Fair	45%	-	Large codominant leader failure in past
322	(R)	-	English walnut	<i>Juglans regia</i>	6.7	-	12/12	Fair	Good	Good	70%	-	Orchard tree, well maintained for walnut production
323	(R)	-	English walnut	<i>Juglans regia</i>	1.0	-	7/3	Fair	Good	Good	70%	-	Orchard tree, well maintained for walnut production
324	(R)	-	English walnut	<i>Juglans regia</i>	2.0	-	10/6	Fair	Good	Good	70%	-	Orchard tree, well maintained for walnut production
325	(R)	-	English walnut	<i>Juglans regia</i>	4.0	-	12/10	Fair	Good	Good	70%	-	Orchard tree, well maintained for walnut production
326	(R)	-	English walnut	<i>Juglans regia</i>	4.0	-	7/6	Fair	Good	Good	70%	-	Orchard tree, well maintained for walnut production
327	(R)	-	English walnut	<i>Juglans regia</i>	4.2	-	8/6	Poor	Poor	Fair	30%	-	In decline, decay at root crown.
328	(R)	-	English walnut	<i>Juglans regia</i>	1.5	-	7/4	Fair	Good	Good	70%	-	Orchard tree, well maintained for walnut production
329	(R)	-	English walnut	<i>Juglans regia</i>	4.0	-	10/6	Fair	Good	Good	70%	-	Orchard tree, well maintained for walnut production
330	(R)	-	English walnut	<i>Juglans regia</i>	2.0	-	10/5	Fair	Good	Good	70%	-	Orchard tree, well maintained for walnut production
331	(R)	-	English walnut	<i>Juglans regia</i>	2.0	-	7/6	Fair	Good	Good	70%	-	Orchard tree, well maintained for walnut production
332	(R)	-	English walnut	<i>Juglans regia</i>	1.0	-	6/3	Fair	Good	Good	70%	-	Orchard tree, well maintained for walnut production
333	(R)	-	English walnut	<i>Juglans regia</i>	3.0	-	10/8	Fair	Good	Good	70%	-	Orchard tree, well maintained for walnut production
334	(R)	-	English walnut	<i>Juglans regia</i>	6.3	-	14/12	Fair	Good	Good	70%	-	Orchard tree, well maintained for walnut production
335	(R)	-	English walnut	<i>Juglans regia</i>	5.0	-	12/10	Fair	Good	Good	70%	-	Orchard tree, well maintained for walnut production

TREE INVENTORY SURVEY

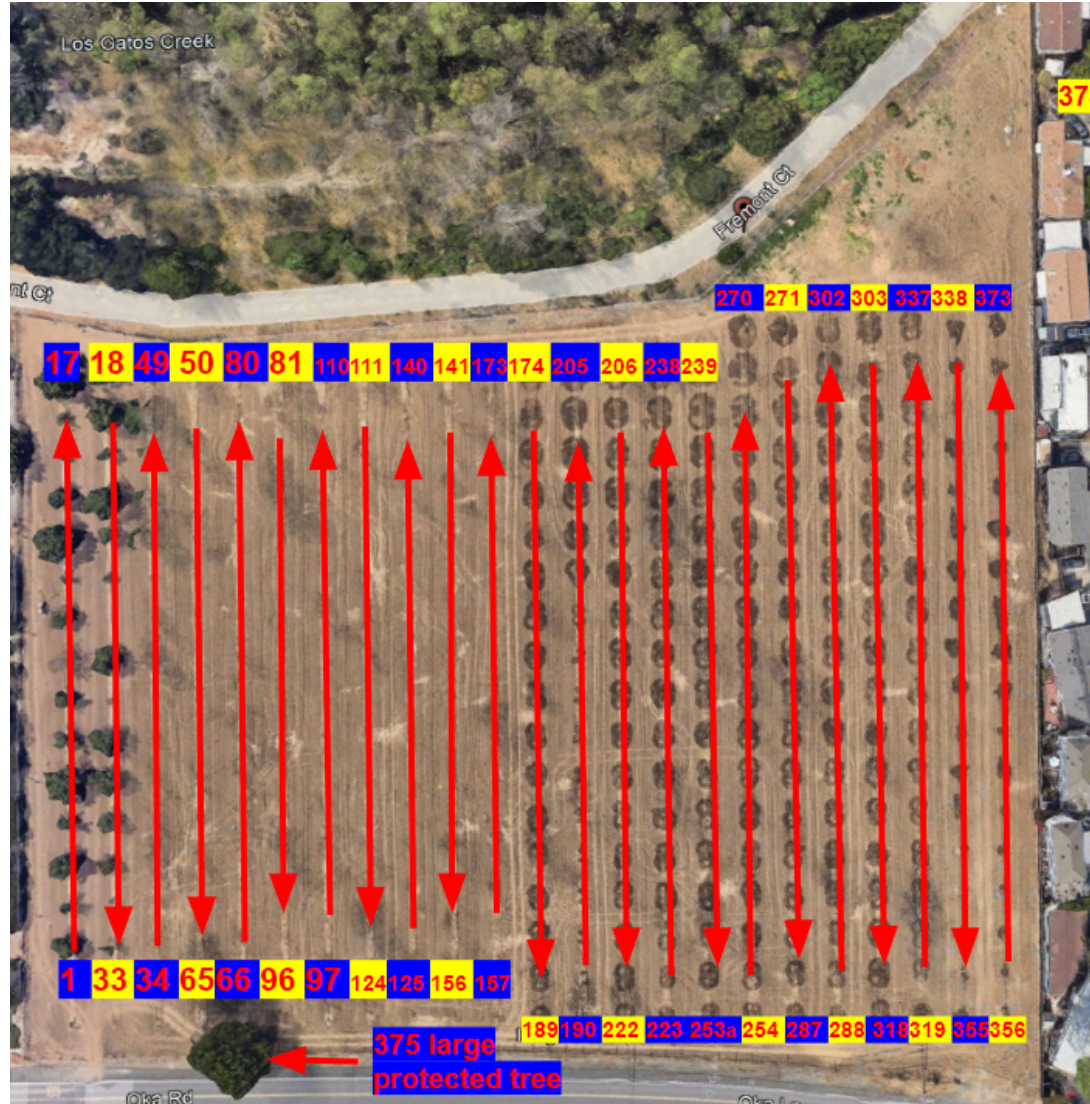
Tree Tag #	Preserve or Remove	Protected Tree	Common Name	Scientific Name	Trunk (in.)	If more than 1 Trunk, Total Diameter	Height (ft.) / Canopy Spread (ft.)	Health Rating	Structural Rating	Form Rating	Overall Condition (0-100%)	Number of Replacement Trees (24" box)	Summary
336	(R)	-	English walnut	<i>Juglans regia</i>	4.0	-	12/10	Fair	Good	Good	70%	-	Orchard tree, well maintained for walnut production
337	(R)	-	English walnut	<i>Juglans regia</i>	13.3	-	15/20	Fair	Poor	Poor	20%	-	Decay at root crown
338	(R)	-	English walnut	<i>Juglans regia</i>	2.5	-	8/6	Fair	Good	Good	70%	-	Recently planted orchard tree.
339	(R)	-	English walnut	<i>Juglans regia</i>	2.5	-	8/6	Fair	Good	Good	70%	-	Recently planted orchard tree.
340	(R)	-	English walnut	<i>Juglans regia</i>	2.5	-	8/6	Fair	Good	Good	70%	-	Recently planted orchard tree.
341	(R)	-	English walnut	<i>Juglans regia</i>	2.5	-	8/6	Fair	Good	Good	70%	-	Recently planted orchard tree.
342	(R)	-	English walnut	<i>Juglans regia</i>	2.5	-	8/6	Fair	Good	Good	70%	-	Recently planted orchard tree.
343	(R)	-	English walnut	<i>Juglans regia</i>	2.5	-	8/6	Fair	Good	Good	70%	-	Recently planted orchard tree.
344	(R)	-	English walnut	<i>Juglans regia</i>	2.5	-	8/6	Fair	Good	Good	70%	-	Recently planted orchard tree.
345	(R)	-	English walnut	<i>Juglans regia</i>	2.5	-	8/6	Fair	Good	Good	70%	-	Recently planted orchard tree.
346	(R)	-	English walnut	<i>Juglans regia</i>	2.5	-	8/6	Fair	Good	Good	70%	-	Recently planted orchard tree.
347	(R)	-	English walnut	<i>Juglans regia</i>	2.5	-	8/6	Fair	Good	Good	70%	-	Recently planted orchard tree.
348	(R)	-	English walnut	<i>Juglans regia</i>	2.5	-	8/6	Fair	Good	Good	70%	-	Recently planted orchard tree.
349	(R)	-	English walnut	<i>Juglans regia</i>	2.5	-	8/6	Fair	Good	Good	70%	-	Recently planted orchard tree.
350	(R)	-	English walnut	<i>Juglans regia</i>	2.5	-	8/6	Fair	Good	Good	70%	-	Recently planted orchard tree.
351	(R)	-	English walnut	<i>Juglans regia</i>	2.5	-	8/6	Fair	Good	Good	70%	-	Recently planted orchard tree.
352	(R)	-	English walnut	<i>Juglans regia</i>	2.5	-	8/6	Fair	Good	Good	70%	-	Recently planted orchard tree.
353	(R)	-	English walnut	<i>Juglans regia</i>	2.5	-	8/6	Fair	Good	Good	70%	-	Recently planted orchard tree.
354	(R)	-	English walnut	<i>Juglans regia</i>	2.5	-	8/6	Fair	Good	Good	70%	-	Recently planted orchard tree.
355	(R)	-	English walnut	<i>Juglans regia</i>	2.5	-	8/6	Fair	Good	Good	70%	-	Recently planted orchard tree.
356	(R)	-	English walnut	<i>Juglans regia</i>	2.5	-	8/6	Fair	Good	Good	70%	-	Recently planted orchard tree.
357	(R)	-	English walnut	<i>Juglans regia</i>	2.5	-	8/6	Fair	Good	Good	70%	-	Recently planted orchard tree.
358	(R)	-	English walnut	<i>Juglans regia</i>	2.5	-	8/6	Fair	Good	Good	70%	-	Recently planted orchard tree.
359	(R)	-	English walnut	<i>Juglans regia</i>	2.5	-	8/6	Fair	Good	Good	70%	-	Recently planted orchard tree.

TREE INVENTORY SURVEY

Tree Tag #	Preserve or Remove	Protected Tree	Common Name	Scientific Name	Trunk (in.)	If more than 1 Trunk, Total Diameter	Height (ft.) / Canopy Spread (ft.)	Health Rating	Structural Rating	Form Rating	Overall Condition (0-100%)	Number of Replacement Trees (24" box)	Summary
360	(R)	-	English walnut	<i>Juglans regia</i>	2.5	-	8/6	Fair	Good	Good	70%	-	Recently planted orchard tree.
361	(R)	-	English walnut	<i>Juglans regia</i>	2.5	-	8/6	Fair	Good	Good	70%	-	Recently planted orchard tree.
362	(R)	-	English walnut	<i>Juglans regia</i>	2.5	-	8/6	Fair	Good	Good	70%	-	Recently planted orchard tree.
363	(R)	-	English walnut	<i>Juglans regia</i>	2.5	-	8/6	Fair	Good	Good	70%	-	Recently planted orchard tree.
364	(R)	-	English walnut	<i>Juglans regia</i>	2.5	-	8/6	Fair	Good	Good	70%	-	Recently planted orchard tree.
365	(R)	-	English walnut	<i>Juglans regia</i>	2.5	-	8/6	Fair	Good	Good	70%	-	Recently planted orchard tree.
366	(R)	-	English walnut	<i>Juglans regia</i>	2.5	-	8/6	Fair	Good	Good	70%	-	Recently planted orchard tree.
367	(R)	-	English walnut	<i>Juglans regia</i>	2.5	-	8/6	Fair	Good	Good	70%	-	Recently planted orchard tree.
368	(R)	-	English walnut	<i>Juglans regia</i>	2.5	-	8/6	Fair	Good	Good	70%	-	Recently planted orchard tree.
369	(R)	-	English walnut	<i>Juglans regia</i>	2.5	-	8/6	Fair	Good	Good	70%	-	Recently planted orchard tree.
370	(R)	-	English walnut	<i>Juglans regia</i>	2.5	-	8/6	Fair	Good	Good	70%	-	Recently planted orchard tree.
371	(R)	-	English walnut	<i>Juglans regia</i>	2.5	-	8/6	Fair	Good	Good	70%	-	Recently planted orchard tree.
372	(R)	-	English walnut	<i>Juglans regia</i>	2.5	-	8/6	Fair	Good	Good	70%	-	Recently planted orchard tree.
373	(R)	-	English walnut	<i>Juglans regia</i>	2.5	-	8/6	Fair	Good	Good	70%	-	Recently planted orchard tree.
374*	(P)	(P)	Mulberry	<i>Morus alba</i>	10.0	-	18/15	Fair	Poor	Fair	50%	-	Topped in past, 4' from property line.
375	(R)	(P)	Coast live oak	<i>Quercus agrifolia</i>	32.0	-	40/50	Good	Fair	Good	70%	6	Codominant at 10' with fair attachments, 10' from road, dense canopy, recommended minor crown reduction pruning. LARGE PROTECTED TREE

* - Indicates a neighboring tree

TREE MAP



OBSERVATIONS

Species List:

Condition ratings and frequency of occurrence of trees at Oka Rd.

Common Name	Scientific Name	Condition			Total
		Poor	Fair	Good	
Coast live oak	<i>Quercus agrifolia</i>			1	1
English walnut	<i>Juglans regia</i>	22	22	330	374
Mulberry	<i>Morus alba</i>		1		1
Total		22	23	331	376

Trees Proposed For Removal:

375 trees are proposed for removal. Three of the trees that are proposed for removal are protected (#17, 64, 375). Coast live oak #375 to be removed is a “large protected tree” .

Total Removed Trees	Protected Trees	Large Protected Trees
375	2	1



Protected trees to be removed:

Tree Tag #375: Coast Live Oak (*Quercus agrifolia*)

This **Large Protected tree**, with a trunk diameter of 32 inches, stands 40 feet tall with a canopy spread of 50 feet. It is codominant at 10 feet with fair attachments and is situated 10 feet from the road. The tree has a dense canopy with heavy limbs and crown reduction pruning is recommended. This tree is within the footprint of the proposed construction area, making its removal necessary to facilitate the building project. Removal is recommended to prevent any risk to nearby infrastructure and to comply with safety standards outlined in the town ordinances, ensuring the construction can proceed safely and without obstructions. If the tree were to be retained, a construction off set distance of 26.6’ from the tree (10x diameter) would be needed. This would make a new sidewalk impossible to build an likely would result in the loss of a unit. The proposed large protected tree removal matches the following criteria as noted in the town’s ordinance: (1) The condition of the tree or trees with respect to: (a) disease, (b) imminent danger of falling, (c) structural failure, **(d) proximity to existing or proposed structures**, (e) structural damage to a building, or (f) a public nuisance caused by a tree. The International Society of Arboriculture (ISA) Best Management Practices for Tree Risk Assessment shall be used where appropriate in determining a Tree Risk Rating. (4)The

retention of the tree restricts the economic enjoyment of the property or creates an unusual hardship for the property owner by severely limiting the use of the property in a manner not typically experienced by owners of similarly situated properties, and the applicant has demonstrated to the satisfaction of the Director or deciding body that there are no reasonable alternatives to preserve the tree.

Tree Tag #17: English Walnut (*Juglans regia*)

This protected tree, with multiple trunks measuring 8, 4.8, and 7.2 inches in diameter, reaches a height of 20 feet with a canopy spread of 15 feet. Although it is well-maintained for walnut production, the orchard tree's proximity to proposed construction activities necessitates its removal. This action aligns with town ordinances to ensure safety and prevent any interference with construction work. Replacement with suitable species is planned as per the town's guidelines.

Tree Tag #64: English Walnut (*Juglans regia*)

This tree, with an 18.3-inch trunk diameter, stands 16 feet tall with a canopy spread of 16 feet. It is in severe decline with poor vigor, abundant dead wood, and a history of limb loss. Rated poor in health, structure, and form, the tree's removal is critical to prevent any potential hazards. This action complies with town ordinances for removing trees that pose a danger due to poor health and structural integrity. The replacement will follow the town's regulations to restore the ecological balance.

Non-Protected Trees to be Removed:

The 374 non-protected English Walnut trees (*Juglans regia*) listed in the inventory are to be removed. These trees, varying in trunk diameters from 1 to 16.1 inches and heights from 5 to 20 feet, are all maintained for walnut production within an orchard setting. Most of these trees are in fair to good health and structure, with a few in poor condition or already dead. The young orchard trees, recently planted, need to be removed to optimize space within the orchard and ensure better management practices. According to town ordinances, a permit is not required for the removal of fruit or nut trees with diameters less than 18 inches. Therefore, all these English Walnut trees qualify for removal under this exemption. Their removal is essential for effective orchard management and does not necessitate any special permits or additional approvals from the town. This bulk removal will facilitate the overall health and productivity of the orchard.

Replacement Tree Plan:

To comply with the town ordinances and ensure the continued ecological balance and aesthetic value of the area, we propose a comprehensive replacement plan for the three protected trees being removed. The plan includes the planting of suitable native species that align with the town's guidelines for tree replacement.

Tree Tag #375: Coast Live Oak (*Quercus agrifolia*)

Replacement Plan: This tree will be replaced with six (6) 24-inch box Coast Live Oaks (*Quercus agrifolia*). These trees will be strategically planted within the property to ensure optimal growth conditions and to restore the ecological benefits provided by the removed tree. Each replacement tree will be placed in locations that will not interfere with existing infrastructure or future construction plans.

Tree Tag #17: English Walnut (*Juglans regia*)

Replacement Plan: This tree will be replaced with three (3) 24-inch box native shade trees, such as Valley Oaks (*Quercus lobata*) or California Sycamores (*Platanus racemosa*). These species are chosen for their suitability to the local climate and their ability to provide substantial ecological benefits. The trees will be planted in designated areas that allow for their full mature growth potential, ensuring they do not impede future development.

Tree Tag #64: English Walnut (*Juglans regia*)

Replacement Plan: This tree, which is in poor health, will be replaced with three (3) 24-inch box native trees, such as Black Walnuts (*Juglans hindsii*) or California Buckeyes (*Aesculus californica*). These replacements are selected to

enhance biodiversity and provide long-term benefits to the local environment. The planting locations will be chosen to maximize the trees' chances of thriving without conflicting with existing or planned structures.

Additional Details:

- **Planting Schedule:** All replacement trees will be planted within six months of the removal of the protected trees, preferably during the appropriate planting season to ensure high survival rates.
- **Maintenance Plan:** Newly planted trees will receive regular watering, mulching, and protection from pests. A certified arborist will monitor their health and provide necessary care during the first two years to ensure successful establishment.
- **Reporting:** Progress reports will be submitted to the town's Parks and Public Works Department at regular intervals, detailing the health and growth of the replacement trees. Photos and site inspections will accompany these reports to verify compliance with the replacement plan.

This replacement plan not only adheres to the town’s requirements but also contributes to the long-term sustainability and beauty of the urban forest, ensuring that the loss of mature trees is mitigated by the introduction of new, healthy ones.

Canopy Size of Removed Tree ¹	Replacement Requirement ^{2, 4}	Single Family Residential Replacement Option ^{3, 4}
10 feet or less	Two 24-inch box trees	Two 15-gallon trees
More than 10 feet to 25 feet	Three 24-inch box trees	Three 15-gallon trees
More than 25 feet to 40 feet	Four 24-inch box trees; or Two 36-inch box trees	Four 15-gallon trees
More than 40 feet to 55 feet	Six 24-inch box trees; or Three 36-inch box trees	Not Available
Greater than 55 feet	Ten 24-inch box trees; or Five 36-inch box trees	Not Available

Showing Los Gatos Replacement Guide

PROJECT PLAN REVIEW

Plan Review for Oak Rd, Los Gatos (Plans titled Oak Rd from HMH dated 4/18/2024)

The plans for the Oak Rd site in Los Gatos propose the removal of all trees on-site, with only one neighboring tree, identified as tree #374*, potentially affected by the construction. However, this tree is located far enough from the proposed construction activities to remain unaffected. It will require Type 1 fencing for the project's duration, and no additional mitigation measures are necessary, ensuring that no other trees will be impacted by the proposed construction.

To minimize impacts when working within ten times the diameter of any preserved tree, it is crucial to follow specific excavation and root management practices. Excavation within the TPZ should be conducted by hand using tools such as an air knife, rotary hammer with clay spade attachment, or shovels, under the direct supervision of the Project Arborist. All roots encountered that are 1.5 inches in diameter or larger should be retained for inspection by the Project Arborist. After inspection, these roots should be cleanly cut using a hand saw or loppers. The cut ends on the tree side should be treated with a tree pruning sealer or grafting compound and covered with three layers of wetted-down burlap to prevent root desiccation. The burlap should be kept moist daily while exposed. Additionally, the area between the tree and the

foundation should be irrigated every other week during the dry season until the top foot of soil is saturated to mitigate minor impacts.

Prior to issuing associated demolition and building permits, a tree protection verification letter from the Project Arborist is required. This involves installing tree protection measures in compliance with the Arborist Report, followed by a visit from the Project Arborist to verify the measures, take photos, and prepare a verification letter for town Arborist review.

Following these guidelines and recommendations will minimize the impact on neighboring tree #374*, ensuring its health and longevity during and after the construction process on Oak Rd, Los Gatos.

TREE PROTECTION PLAN

Detailed Tree Protection Plan

For the aforementioned tree protection plan, this detailed guide has been designed by Kielty Arborists Services LLC. The following section offers an in-depth perspective on the recommended tree preservation guidelines. The aim is to ensure the conservation, vitality, and beauty of trees during construction and developmental endeavors, mitigating any potential detrimental effects. Adherence to these guidelines is essential to uphold both the ecological significance and visual allure of trees within the designated project vicinity. Effective tree protection during construction or development projects requires the use of fencing to demarcate and protect sensitive areas around trees. Should you have any questions or require further clarification, please contact Kielty Arborists Services directly.

Fencing Specifications:

The tree protection fencing should be established and maintained throughout the entire length of the project. It's essential that no equipment, materials, or debris are stored or cleaned inside these protection zones. The zones should remain free from human activity unless explicitly authorized. The choice of fencing type depends on the tree's location and the nature of the surrounding environment.

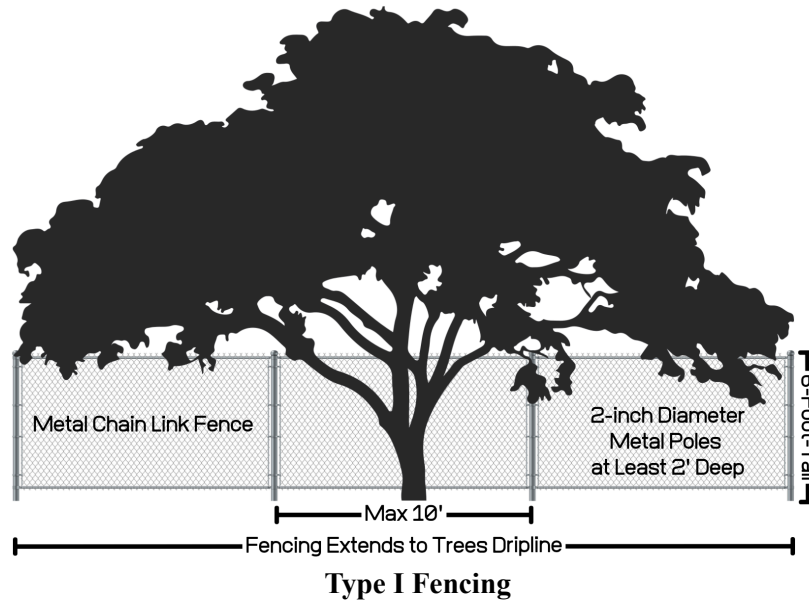
Type I Tree Protection:

Description: This is the most comprehensive form of tree protection fencing. It encompasses the full canopy dripline or Tree Protection Zone (TPZ) of trees designated for preservation.

Application: Typically used in areas where trees are a significant distance away from construction activity or when trees have a large canopy spread.

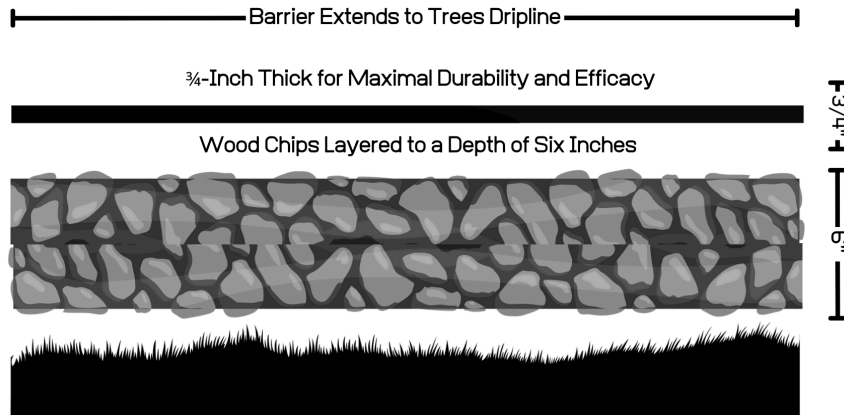
Specifications:

The fencing shall remain intact throughout the duration of the project or until activities within the TPZ are finalized. Tree protection fencing should be a 6-foot-tall metal chain link type supported by 2-inch thick diameter metal posts pounded into the ground to a depth of no less than 2 feet, ensuring stability even in challenging conditions. Poles should be spaced no more than 10 feet apart from center to center, providing a consistent and strong barrier. For trees near existing hardscapes or structures, tree protection fencing shall be placed as close as possible while still allowing access. Sensitive areas may require a landscape barrier if fencing needs to be reduced for access reasons. The location for tree protection fencing for the protected trees on site should be placed at 10x the tree diameters where possible (TPZ). All other non-protected trees are recommended to be protected by fencing placed at the drip line. No equipment or materials should be stored or cleaned inside protection zones. Signs should be placed on fencing signifying "Tree Protection Zone - Keep Out". If fencing needs to be reduced for access or any other reasons, the non-protected areas must be protected by a landscape buffer. All tree protection and inspection schedule measures, design recommendations, watering, and construction schedules shall be implemented in full by the owner and contractor. Tree #374* is to be protected by Type I tree protection fencing.



Landscape Barrier Zone

If for any reason a smaller tree protection zone is needed for access, a landscape buffer should be used, composed of wood chips layered to a depth of six inches, complemented by plywood atop the wood chips where tree protection fencing would typically be situated. The plywood should be 3/4-inch thick for maximal durability and efficacy. This landscape buffer plays a crucial role in mitigating soil compaction within the tree's vulnerable root zone. For optimum stability, it is advisable to securely join the plywood boards, thus preventing any unwanted shifts in the plywood or underlying wood chips.





TREE PROTECTION MAP - TYPE ONE FENCING IN PINK

Staging

All tree protection measures must be in place before the start of construction. An inspection prior to the start of construction is often required by the town. All vehicles must remain on paved surfaces if possible. Existing pavement should remain and should be used for staging. If vehicles are to stray from paved surfaces, 6 inches of chips shall be spread, and plywood laid over the mulch layer. This type of landscape buffer will help reduce the compaction of desired trees. Parking will not be allowed off the paved surfaces

Root Cutting

If for any reason roots are to be cut, the work shall be monitored and documented. Large roots (over 2 inches in diameter) or large masses of roots to be cut must be inspected by the site arborist. The site arborist, at this time, may recommend irrigation or fertilization of the root zone. All roots needing to be cut should be cut clean with a saw or lopper. Roots to be left exposed for a period of time should be covered with layers of burlap and kept moist.

Trenching/excavation

Trenching or excavation for irrigation, drainage, electrical, foundation, or any other reason shall be done by hand when inside the dripline of a protected tree. Hand digging and the careful placement of pipes below or besides protected roots will significantly reduce root loss, thus reducing trauma to the tree. All trenches shall be backfilled with native materials and compacted to near their original level, as soon as possible. Trenches to be left open for a period of time (24 hours), will require the covering of all exposed roots with burlap and be kept moist. The trenches will also need to be covered with plywood to help protect the exposed roots.

Grading

All existing grades underneath the dripline of a protected tree shall remain as is where possible. Grading within the dripline of a protected tree is required to be done under the supervision of the project arborist.

Irrigation

Non native trees- Irrigating the retained mature trees in the landscape is important to ensure their health and vitality. Proper watering can help the trees continue to thrive. Deep irrigation is recommended to take place every other week during the dry season. During the dry season, trees typically need deep, infrequent watering. Watering every 2 weeks is sufficient for the retained trees on this site. Applying water slowly and consistently until it penetrates at least 12-18 inches into the soil is recommended. Avoid spraying water directly on the trunks, as this can lead to disease and decay. Mulch is recommended to be maintained with mulch added overtime as needed. Mulch helps retain soil moisture, regulates temperature, and prevents weeds, which can compete with the tree for water. The use of soaker hoses or an inline drip emitter system set up in a grid like manner to provide deep irrigation during the dry season is recommended. The irrigation system should be placed on top of grade and require no excavation. This will help to keep the trees healthy.

Native oak trees- Native oak trees are recommended to only be irrigated during the months of May and September or if their root zones are traumatized. Frequent irrigation during dry summer months can significantly raise the risk of oak trees developing oak root fungus disease and is the leading cause of oak tree death and failure in the urban landscape.

Tree Pruning

Tree pruning during construction is not just about aesthetics and safety; it's also about adhering to best practices and standards set by professional bodies like the International Society of Arboriculture (ISA) and the American National Standards Institute (ANSI A300 Pruning Standards). The ISA sets rigorous standards to ensure trees are cared for sustainably and scientifically. Under these guidelines, and for the well-being of trees during construction, it's imperative to have an expert arborist oversee any pruning. Their knowledge guarantees that only the necessary branches are removed, ensuring both safety and tree health. The guideline to prune no more than 25% of the tree's total foliage is grounded in sound arboricultural practices. This safeguards the tree's photosynthetic capability, reduces undue stress, and preserves the balance between its roots and canopy. Homeowners should be aware of these standards and ensure they are being met, trusting in the expertise of their arborist and keeping open communication about their tree care decisions. This approach not only ensures the tree's compatibility with new construction aesthetics but also its long-term health and vitality.

Traffic Within TPZs

Strictly prohibit driving vehicles or heavy foot traffic on bare soil within the TPZs of protected trees. Such activities can crush roots directly and compact the soil, impeding oxygen and water infiltration. In areas without existing pavement, use temporary anti-compaction materials, such as wood chips covered with plywood, to prevent damage to tree roots (landscape barrier). Temporary pathways or boardwalks can be constructed to facilitate access while minimizing soil compaction within the TPZ.

Chemical and Material Handling

Store chemicals and construction materials away from TPZs to prevent accidental spills or exposure that may harm tree health. Follow proper handling and disposal procedures for chemicals to ensure compliance with environmental regulations. Minimize the use of toxic materials near trees and opt for environmentally friendly alternatives whenever possible.

Monitoring and Inspection

Regularly monitor and inspect the tree protection measures throughout the construction process to ensure their effectiveness and compliance with the Tree Preservation Plan. Assign a qualified individual, such as a project arborist or certified arborist, to conduct periodic inspections and provide recommendations for any necessary adjustments or improvements. Maintain detailed records of inspections, including dates, findings, and any actions taken.

Post-Construction Maintenance

After construction is completed, continue monitoring the health and condition of preserved trees to address any potential issues promptly. Implement post-construction maintenance practices such as watering, mulching, pruning, and fertilization as needed to support the recovery and long-term health of the trees. Regularly assess the trees for signs of stress, disease, or structural instability and take appropriate measures, including consulting with a certified arborist if necessary.

Compliance with Environmental Laws

Ensure full compliance with all applicable local, state, and federal environmental laws, regulations, and permit requirements pertaining to tree protection during construction. Familiarize yourself with specific regulations regarding tree preservation in your jurisdiction and consult with local authorities or arborists for guidance if needed.

Responsibility

Designate a responsible person or team within the project organization to oversee the implementation and enforcement of the Tree Preservation Plan. Clearly communicate the roles and responsibilities of all parties involved in the construction project regarding tree protection.

Emergency Procedures

Develop clear procedures to follow in the event of emergencies that may impact tree preservation, such as severe storms, accidents, or unexpected tree health issues. Ensure that emergency response plans address prompt actions to mitigate potential risks to trees and contact qualified professionals, such as arborists or tree care companies when needed.

Communication and Training

Facilitate effective communication among all project stakeholders, including contractors, subcontractors, architects, engineers, and landscape professionals, regarding the importance of tree preservation and the specific guidelines to follow. Conduct training sessions or workshops to educate personnel.

PURPOSE & USE OF THE REPORT

This report informs tree management decisions for the construction project and provides recommendations to maximize tree survival. It serves as a valuable resource for stakeholders, facilitating informed discussions and sustainable tree management practices.

TESTING & ANALYSIS

In order to assess the trees, a thorough examination was conducted using a variety of methods. For trees with accessible trunks, precise measurements of the Diameter at Breast Height (DBH) were taken using a specialized diameter tape

measure. In cases where the trunks were not readily accessible, visual estimations were employed to determine the DBH. As part of the inventory process, all trees exceeding a specific DBH threshold stated in town code were included.

To evaluate the health of the trees, multiple factors were considered, including their overall appearance and our team's extensive experiential knowledge of each species. This holistic approach ensured a comprehensive understanding of the tree's well-being.

To accurately document the location of each tree, a GPS smartphone application was utilized during the data collection process. This enabled us to create detailed maps that are included in this report. However, it is important to note that despite our efforts to minimize errors, inherent limitations of GPS data collection, coupled with slight discrepancies between GPS data and CAD drawings, may result in approximate tree locations depicted on the map.

TREE WORK STANDARDS AND QUALIFICATIONS

To ensure high-quality tree work, including removal, pruning, and planting, the following standards and qualifications will be adhered to:

- **Industry Standards:** All tree work will be performed in accordance with industry standards established by the International Society of Arboriculture (ISA). These standards encompass best practices and guidelines for tree care and maintenance.
- **Contractor Licensing and Insurance:** The contractor undertaking the tree work must possess a valid State of California Contractors License for Tree Service (C61-D49) or Landscaping (C-27). Additionally, they must have comprehensive general liability, worker's compensation, and commercial auto/equipment insurance coverage.
- **Workmanship Standards:** Contractors must adhere to the current Best Management Practices of the International Society of Arboriculture (ISA) and the American National Standards Institute (ANSI). These standards, including ANSI A300 and Z133.1, outline guidelines for tree pruning, fertilization, and safety. Compliance with these standards ensures the use of proper techniques and practices throughout the tree work process.

By adhering to these established standards and qualifications, we can ensure the provision of professional and safe tree services that meet the industry's best practices and promote the health and longevity of the trees.

SCHEDULE OF INSPECTIONS

Kielty Arborists Services LLC:

We will conduct the following inspections as needed for the project:

- **Pre-Equipment Mobilization, Delivery of Materials, Tree Removal, and Site Work:** Our project arborist will meet with the general contractor and owners to review tree protection measures. We will identify and mark tree-protection zone fencing, specify equipment access routes and storage areas, and assess the existing conditions of trees to determine any additional necessary protection measures.
- **Inspection after Installation of Tree-Protection Fencing:** Upon completion of tree-protection fencing installation, our project arborist will inspect the site to ensure that all protection measures are correctly implemented. We will also review any contractor requests for access within the tree protection zones and assess any changes in tree health since the previous inspection.
- **Inspection during Soil Excavation or Work Potentially Affecting Protected Trees:** During any work within non-intrusion zones of protected trees, our project arborist will inspect the site and document the implemented recommendations. We will assess any changes in tree health since the previous inspection to monitor the well-being of the trees.

- **Final Site Inspection:** Prior to project completion, our project arborist will conduct a final site inspection to evaluate tree health and provide necessary recommendations to promote their longevity. A comprehensive letter report summarizing our findings and conclusions will be provided to the town of Los Gatos.

Our inspections aim to ensure proper tree protection, health, and adherence to project requirements.

ASSUMPTIONS AND LIMITING CONDITIONS

- **Legal Descriptions and Titles:** The consultant/arborist assumes the accuracy of any legal description and titles provided. No responsibility is assumed for any legal due diligence. The consultant/arborist shall not be held liable for any discrepancies or issues arising from incorrect legal descriptions or faulty titles.
- **Compliance with Laws and Regulations:** The property is assumed to be in compliance with all applicable codes, ordinances, statutes, or other government regulations. The consultant/arborist is not responsible for identifying or rectifying any non-compliance.
- **Reliability of Information:** Though diligent efforts have been made to obtain and verify information, the consultant/arborist is not responsible for inaccuracies or incomplete data provided by external sources. The client accepts full responsibility for any decisions or actions taken based on this data.
- **Testimony or Court Attendance:** The consultant/arborist has no obligation to provide testimony or attend court regarding this report unless mutually agreed upon through separate written agreements, which may incur additional fees.
- **Report Integrity:** Unauthorized alteration, loss, or reproduction of this report renders it invalid. The consultant/arborist shall not be liable for any interpretations or conclusions made from altered reports.
- **Restricted Publication and Use:** This report is exclusively for the use of the original client. Any other use or dissemination, without prior written consent from the consultant/arborist, is strictly prohibited.
- **Non-disclosure to Public Media:** The client is prohibited from using any content of this report, including the consultant/arborist's identity, in any public communication without prior written consent.
- **Opinion-based Report:** The report represents the independent, professional judgment of the consultant/arborist. The fee is not contingent upon any predetermined outcomes, values, or events.
- **Visual Aids Limitation:** Visual aids are for illustrative purposes and should not be considered precise representations. They are not substitutes for formal engineering, architectural, or survey reports.
- **Inspection Limitations:** The consultant/arborist's inspection is limited to visible and accessible components. Non-invasive methods are used. There is no warranty or guarantee that problems will not develop in the future.

ARBORIST DISCLOSURE STATEMENT

Arborists specialize in the assessment and care of trees using their education, knowledge, training, and experience.

- **Limitations of Tree Assessment:** Arborists cannot guarantee the detection of all conditions that could compromise a tree's structure or health. The consultant/arborist makes no warranties regarding the future condition of trees and shall not be liable for any incidents or damages resulting from tree failures.
- **Remedial Treatments Uncertainty:** Remedial treatments for trees have variable outcomes and cannot be guaranteed.
- **Considerations Beyond Scope:** The consultant/arborist's services are confined to tree assessment and care. The client assumes responsibility for matters involving property boundaries, ownership, disputes, and other non-arboricultural considerations.

- **Inherent Risks:** Living near trees inherently involves risks. The consultant/arborist is not responsible for any incidents or damages arising from such risks.
- **Client's Responsibility:** The client is responsible for considering the information and recommendations provided by the consultant/arborist and for any decisions made or actions taken.

The client acknowledges and accepts these Assumptions and Limiting Conditions and Arborist Disclosure Statement, recognizing that reliance upon this report is at their own risk. The consultant/arborist disclaims all warranties, express or implied.

CERTIFICATION

I hereby certify that all the statements of fact in this report are true, complete, and correct to the best of my knowledge and belief, and are made in good faith.

David Beckham

Signature of Consultant

David Beckham

Certified Arborist

WE#10724A TRAQ Qualified

June 28, 2024

