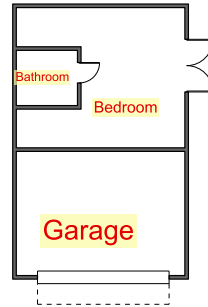


114:
Single Casement - Eagle Series, Dark Bronze Exterior
FDL w/spacers applied wood grille patterns to match others at back of the house
Replacing double hung - retrofit
35 1/2" x 52 3/4"

Existing material is wood
Proposed is Alum-wood clad

Mickael Forsman
16760 Magneson Loop
Los Gatos, CA
95032

U Factor <.30
SHGC <.25

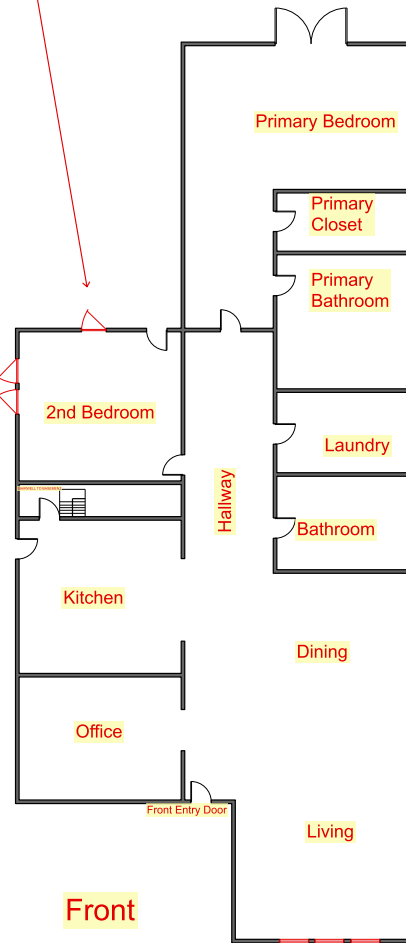


115:
Single Casement - Eagle Series, Dark Bronze Exterior
FDL w/spacers applied wood grille patterns to match others at back of the house
Replacing double hung - retrofit
35 1/2" x 52 3/4"

Existing material is wood
Proposed is Alum-wood clad

116:
Single Casement - Eagle Series, Dark Bronze Exterior
FDL w/spacers applied wood grille patterns to match others at back of the house
Replacing double hung - retrofit
35 1/2" x 52 3/4"

Existing material is wood
Proposed is Alum-wood clad



Scope of work
Replace 14 retrofit windows
(please note windows in living room sold with out grilles)
Changing window style in 2nd bedroom
(Casements from double hungs)

113:
Single casement - Fibrex White exterior
Like for like retrofit
Not replacing existing grilles
23 1/2" x 59 3/4"

Existing material is wood
Proposed is Fibrex-wood composite

112:
Picture Window - Fibrex White exterior
Like for like retrofit
Not replacing existing grilles
23 1/2" x 59 3/4"

Existing material is wood
Proposed is Fibrex-wood composite

111:
Single casement - Fibrex White exterior
Like for like retrofit
Not replacing existing grilles
23 1/2" x 59 3/4"

110:
Single casement - Fibrex White exterior
Like for like retrofit
Not replacing existing grilles
23 1/2" x 60"

109:
Single casement - Fibrex White exterior
Like for like retrofit
Not replacing existing grilles
23 1/2" x 60"

105 (top) & 108 (under 105):
Picture Windows - Fibrex White exterior
Like for like retrofits
Not replicating existing grilles
103: 23 1/2" x 23"
106: 23 1/2" x 77"

Existing material is wood
Proposed is Fibrex-wood composite

103 (top) & 106 (under 103):
Picture Windows - Fibrex White exterior
Like for like retrofits
Not replicating existing grilles
103: 23 1/2" x 23"
106: 23 1/2" x 77"

Existing material is wood
Proposed is Fibrex-wood composite

104 (top) & 107 (under 104):
Picture Windows - Fibrex White exterior
Like for like retrofits
Not replicating existing grilles
103: 23 1/2" x 23"
106: 23 1/2" x 77"

Picture WINDOWS

Transform your home with picture windows that can stand alone beautifully or can be combined with other window styles for added curb appeal.

- ADAPTABLE**
 Match or change your home's appearance by combining picture windows with other windows.

STRONG
 Using strong Fibrex® material frames, our picture windows easily support the weight of the heavy glass commonly needed for large picture windows.

VERSATILE
 Like all of our windows, picture window glass is available tempered, tinted, or in a wide variety of decorative patterns.



Picture Window



Fixed Picture Window



Combination Window



Picture and Specialty Windows / Terratone Exterior



Picture Windows / Pine Interior

“The new windows are gorgeous and receive rave reviews from our visitors.”

ROBERT R.



Picture Window / White Interior

Schedule Your FREE In-Home Consultation

- Call your local Renewal by Andersen representative
- Click over to [RENEWALBYANDERSEN.COM](https://renewalbyandersen.com)
- Visit your local Renewal by Andersen showroom



Picture Window / White Interior



Picture and Specialty Equal Leg Arch Combination Window / Oak Interior

Casement and Awning WINDOWS

Casement windows catch a breeze and direct fresh air indoors, allowing the most ventilation of any window style. Awning windows let in fresh air, even on rainy days!

EASY

Casement windows open wide to allow easy cleaning of outside glass from the inside⁴ and can be hinged from the right or left.

SECURE

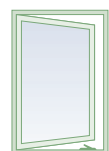
One lever positioned in an easy-to-reach location securely locks the casement window at multiple points for a weathertight seal.

EFFICIENT

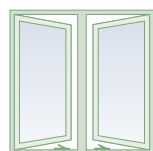
Casement and awning windows are our most energy-efficient ventilating window styles.

CONVENIENT

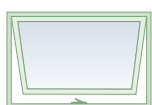
Awning windows are recommended for use over cabinets, counters, or areas where opening and closing require a reach.



Casement Window



Casement Double Window



Awning Window

Use grilles to mimic the appearance of double-hung windows for a historically accurate look



Casement and Picture Combination Windows / Oak Interior

“Renewal by Andersen® was by far the best investment I've ever made for my home.”

PAUL M.



Casement and Specialty Equal Leg Arch Combination Window / Oak Interior / Colonial Grilles



Casement Windows / White Interior / Simulated 2 1/4" Double-Hung Check Rail / Modified Colonial Grilles



Awning Window / Pine Interior



Casement Window / Terracotta Interior

Picture WINDOWS

Transform your home with picture windows that can stand alone beautifully or can be combined with other window styles for added curb appeal.

- ADAPTABLE**

Match or change your home's appearance by combining picture windows with other windows.
- STRONG**

Using strong Fibrex® material frames, our picture windows easily support the weight of the heavy glass commonly needed for large picture windows.
- VERSATILE**

Like all of our windows, picture window glass is available tempered, tinted, or in a wide variety of decorative patterns.



Picture Window



Fixed Picture Window



Combination Window

EXPRESS
YOUR
STYLE



Picture and Specialty Windows / Terratone Exterior



Picture Windows / Pine Interior

“The new windows are gorgeous and receive rave reviews from our visitors.”

ROBERT R.



Picture Window / White Interior

Schedule Your FREE In-Home Consultation

- Call your local Renewal by Andersen representative
- Click over to [RENEWALBYANDERSEN.COM](https://renewalbyandersen.com)
- Visit your local Renewal by Andersen showroom



Picture Window / White Interior



Picture and Specialty Equal Leg Arch Combination Window / Oak Interior