

August 15, 2019

Erin Walters
Associate Planner
Community Development Department
110 E Main Street
Los Gatos CA 95030



Monarch Consulting Arborists LLC
P.O. Box 1010
Felton, CA 95018
831.331.8982

I was asked to locate and inspect the indicated additional trees down slope on 15365 Santella Court (Appendix A). The trees were to be assessed as part of the visibility analysis to help determine their condition. One tree had previously been labeled #244 "blue oak" which is in fact a 36 inch trunk diameter coast live oak (*Quercus agrifolia*).

I tried to locate the trees based on the provided map but the area is very dense with poison oak (*Toxicodendron diversilobum*) and is nearly impenetrable without a machete and/or Tyvek suit.

The area where the trees are located to the northeast is a dense stand of coast live oaks (*Quercus agrifolia*). The composition of plants are typical for this area and there are the usual oak woodland species such as poison oak, manzanita (*Arctostaphylos sp.*), and coyote brush (*Baccharis pilularis*). The majority of trees are naturally occurring coast live oaks, most with multiple trunks approximately 8-10 inches in diameter, and are about 25 to 35 feet tall with 25 to 35 foot canopy diameters. This stand of trees along the northeast portion of the site is in good condition with dense crowns and normal foliar color and size (Appendix B). Along the northwest portion there were three trees on the lower slope indicated in the plan which are all blue oak (*Quercus douglasii*) with trunk diameters about 10 to 12 inches and are approximately 30 feet tall with crown diameters of about 30 feet. These trees are in fair to good condition growing amongst the stand indicated as #1 and #2 in my original report.

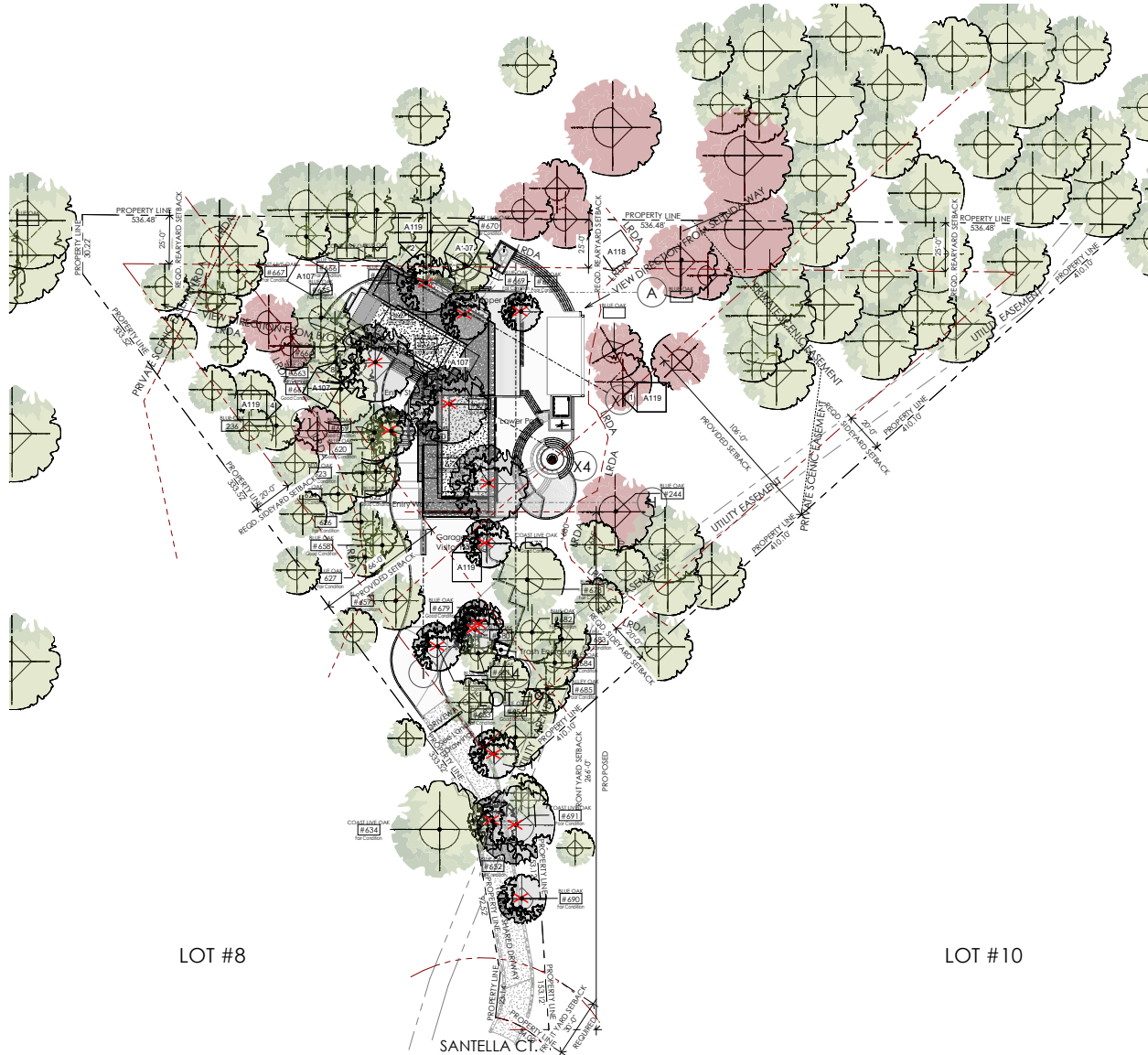
Richard J. Gessner

ASCA Registered Consulting Arborist® #496
ISA Board Certified Master Arborist® WE-4341B
ISA Tree Risk Assessor Qualified
CA Qualified Applicators License QL 104230



Appendix A: Aerial image provided for assessment

Snapshot not to scale from A120 dated October 19, 2018 provided by Srusti Architecture. The trees in pink are indicated in this report.

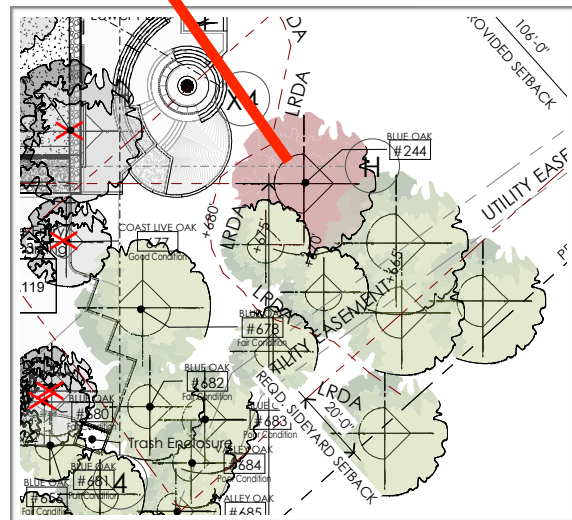


① Site Plan with missing arborist information
1" = 30'-0"

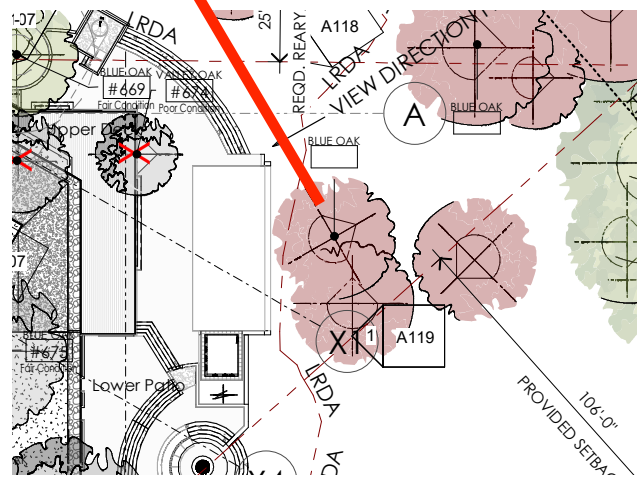


Appendix B: Photographs

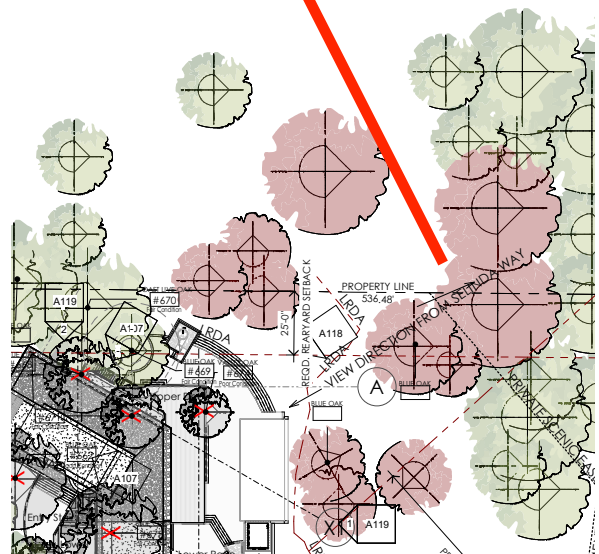
B1: Tree 244



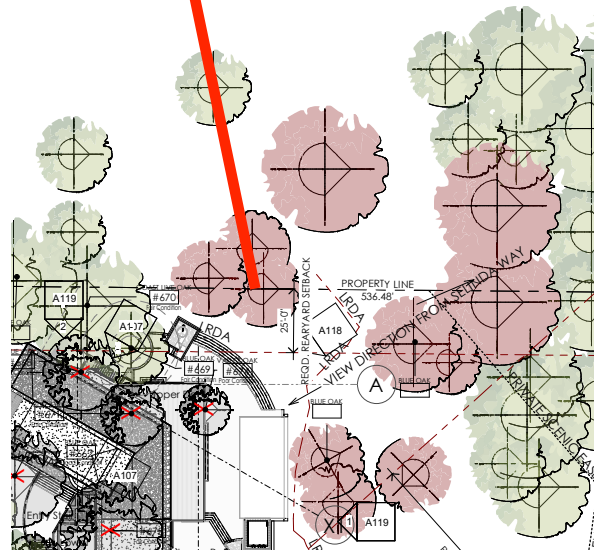
B2: Oaks along the west side



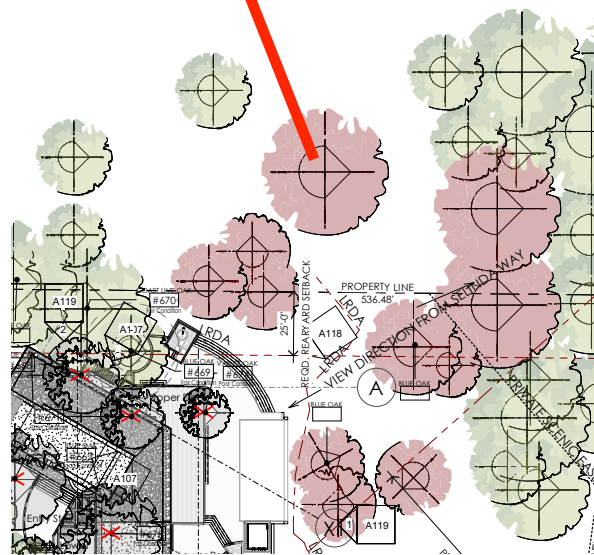
B3: Northeast area



B4: North side beyond the fence



B5: North side down slope



B6: Blue oaks west side

