

(408) 507 8138 www.srustiarchitects.com

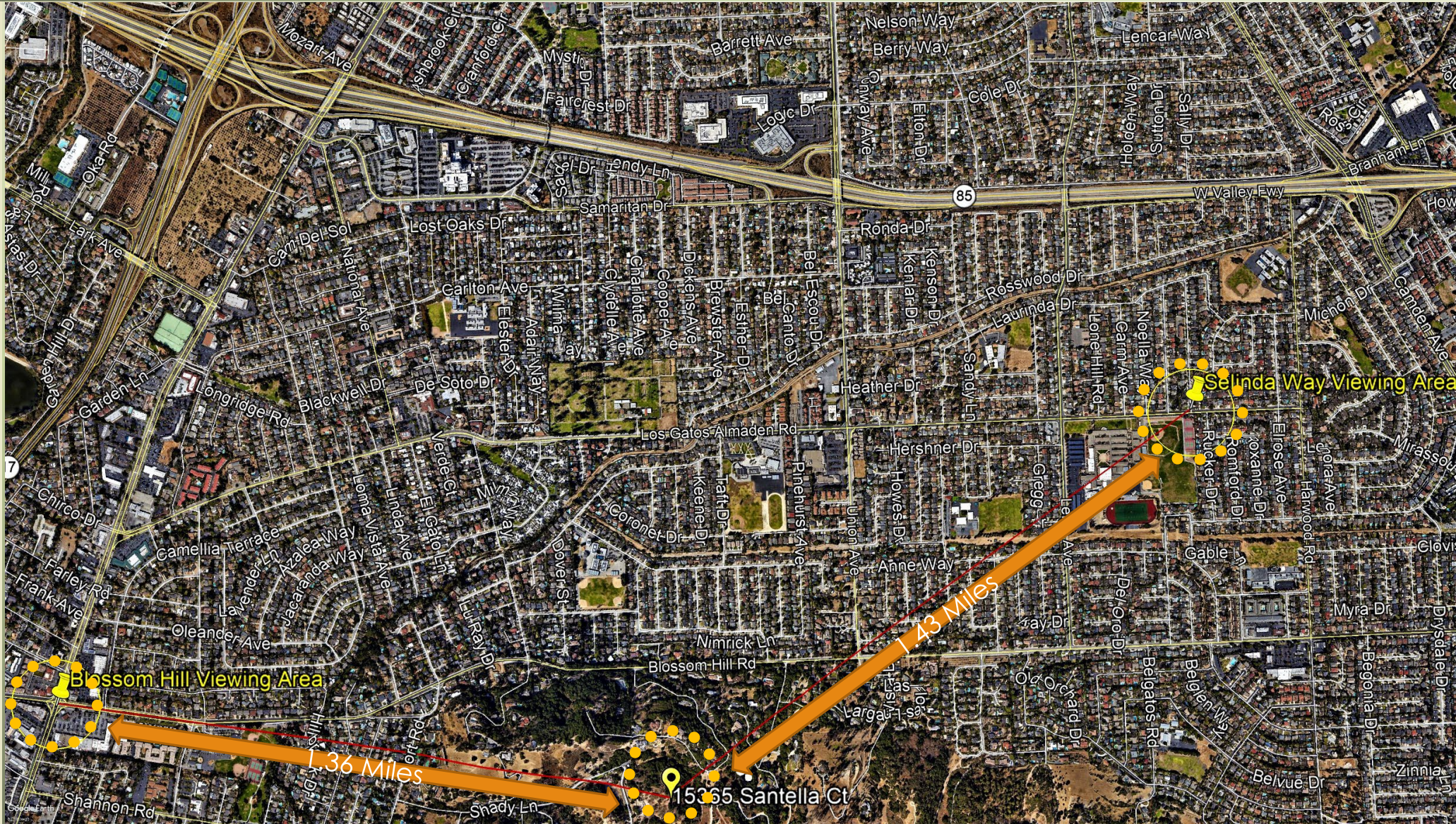
OLGAARD RESIDENCE

Existing Site Conditions & Visibility / Tree Screening Analysis

Srusti Architects



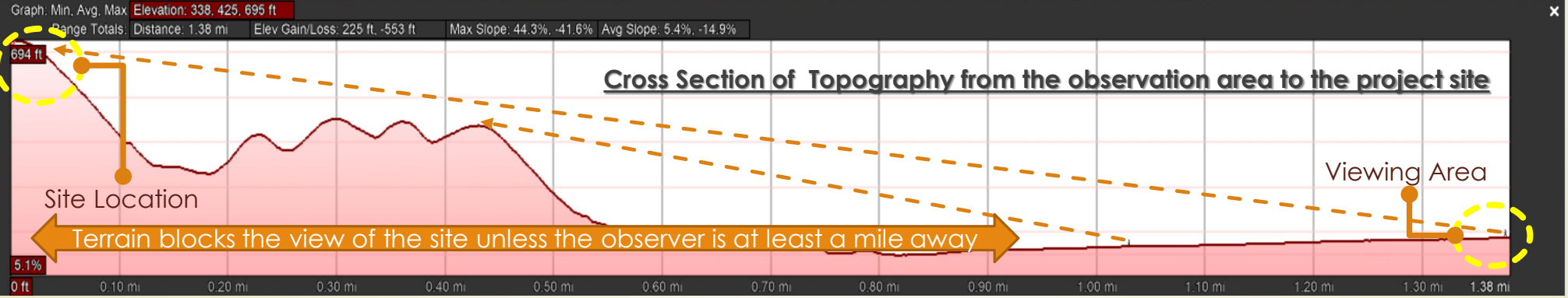
- Blossom Hill/LG Blvd. and Selinda Way/LG Almaden Rd. viewing areas were identified as the nearest to the project from where the home could be potentially seen.



srusti architects (408) 507 8138 www.srustiarchitects.com



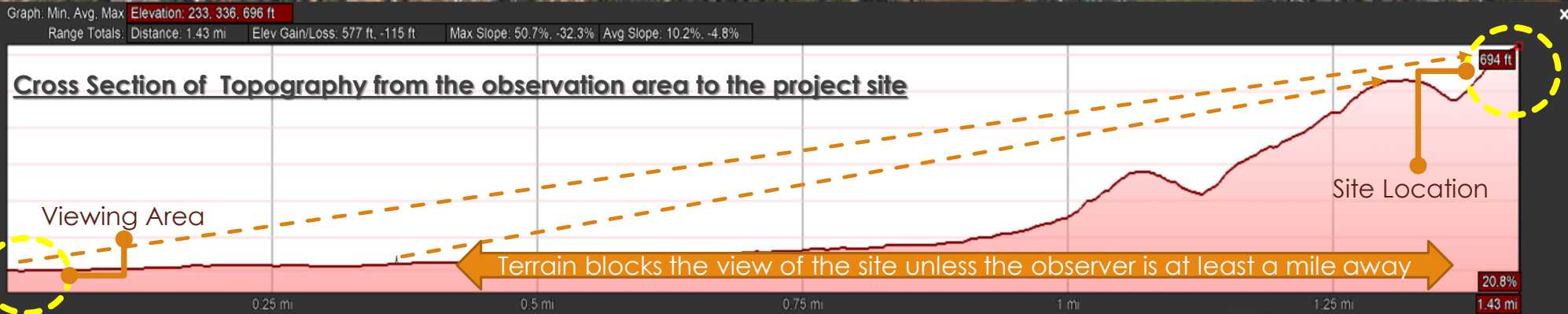
➤ Blossom Hill/LG Blvd. viewing Area is about 1.36 miles away & 316 feet lower than project site



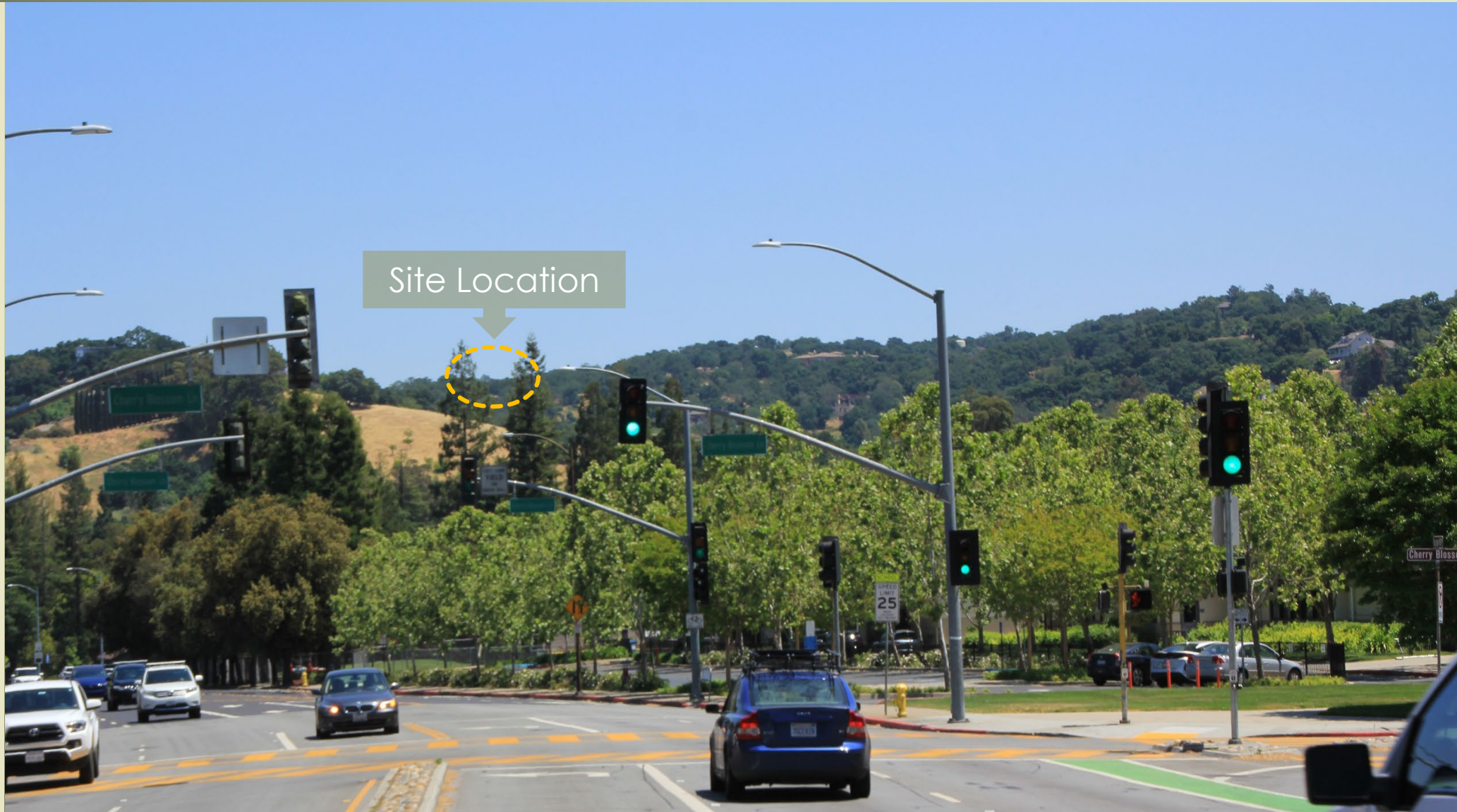
Srusti Architects (408) 507 8138 www.srustiarchitects.com



Selinda Wy/LG Almaden Rd. viewing Area is about 1.43 miles away & 462 feet lower than project site



- Project site seen with a naked eye (50 mm lens), 500 feet closer from Blossom Hill /LG Blvd intersection.



- ▶ Project site seen with a telephoto (300 mm) lens, 500 feet closer from Blossom Hill /Los Gatos Blvd intersection, when story poles were installed.



➤ Project site seen with a naked eye (50 mm lens) at Blossom Hill /LG Blvd intersection.



- ▶ Project site seen with a telephoto (300 mm) lens from Blossom Hill /Los Gatos Blvd intersection, when story poles were installed.



- ▶ Project site seen with a naked eye (50 mm lens), 500 feet away from Blossom Hill /LG Blvd intersection.



- ▶ Project site seen with a telephoto (300 mm) lens, 500 feet away from Blossom Hill /Los Gatos Blvd intersection, when story poles were installed.



- ▶ Project site seen with a naked eye (50 mm lens), 500 feet closer from Selinda Way/LG Almaden Rd. intersection.



- ▶ Project site seen with a telephoto (300 mm) lens, 500 feet closer from Selinda Way/LG Almaden Rd. intersection.

Site Location



► Project site seen with a naked eye (50 mm lens) at Selinda Way/LG Almaden Rd. intersection. This picture was taken at Lee Highschool fence (near the observation area) to get a clear view of the site



Srusti Architects (408) 507 8138 www.srustiarchitects.com



Project Site Photographs from Viewing Areas

➤ Project site seen with a telephoto (300 mm) lens, from Selinda Way/LG Almaden Rd. intersection. This picture was taken at Lee Highschool fence (near the observation area) to get a clear view of the site.



Srusti Architects (408) 507 8138 www.srustiarchitects.com



► Project site seen with a naked eye (50 mm lens) 500 feet away from Selinda Way/LG Almaden Rd. intersection.

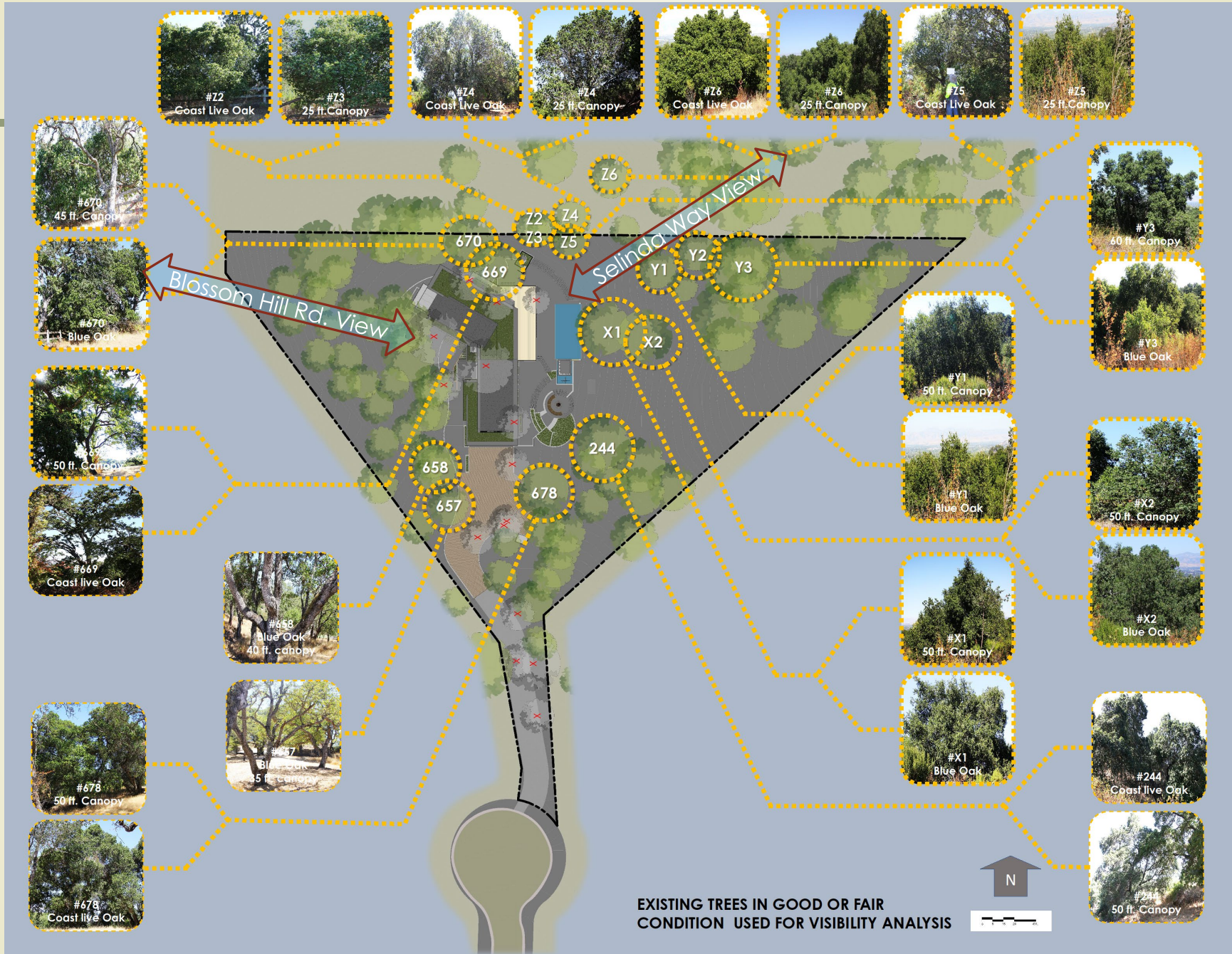


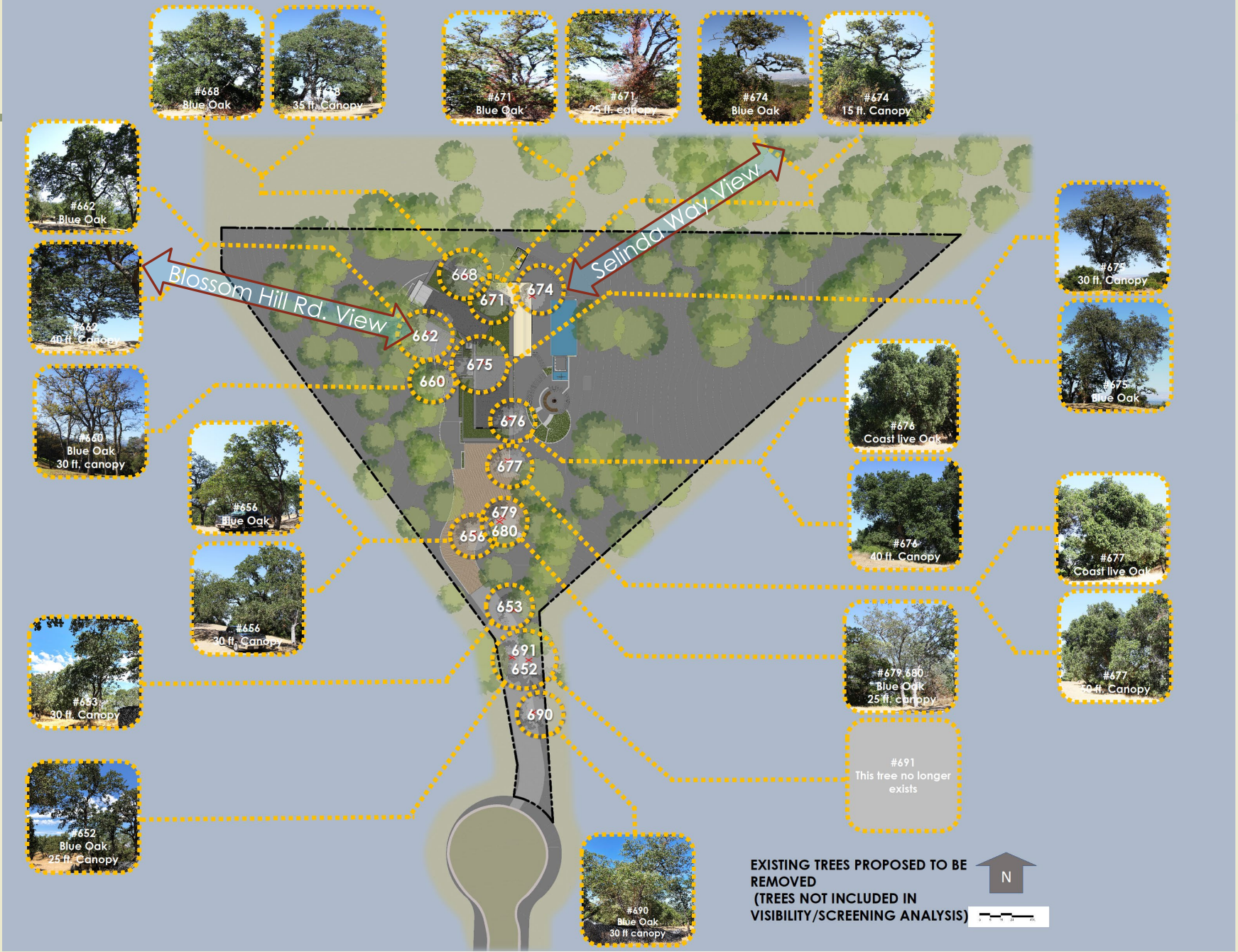
www.srustiarchitects.com (408) 507 8138 Srusti Architects



- ▶ Project site seen with a telephoto (300 mm) lens, 500 feet away from Selinda Way/LG Almaden Rd. intersection.



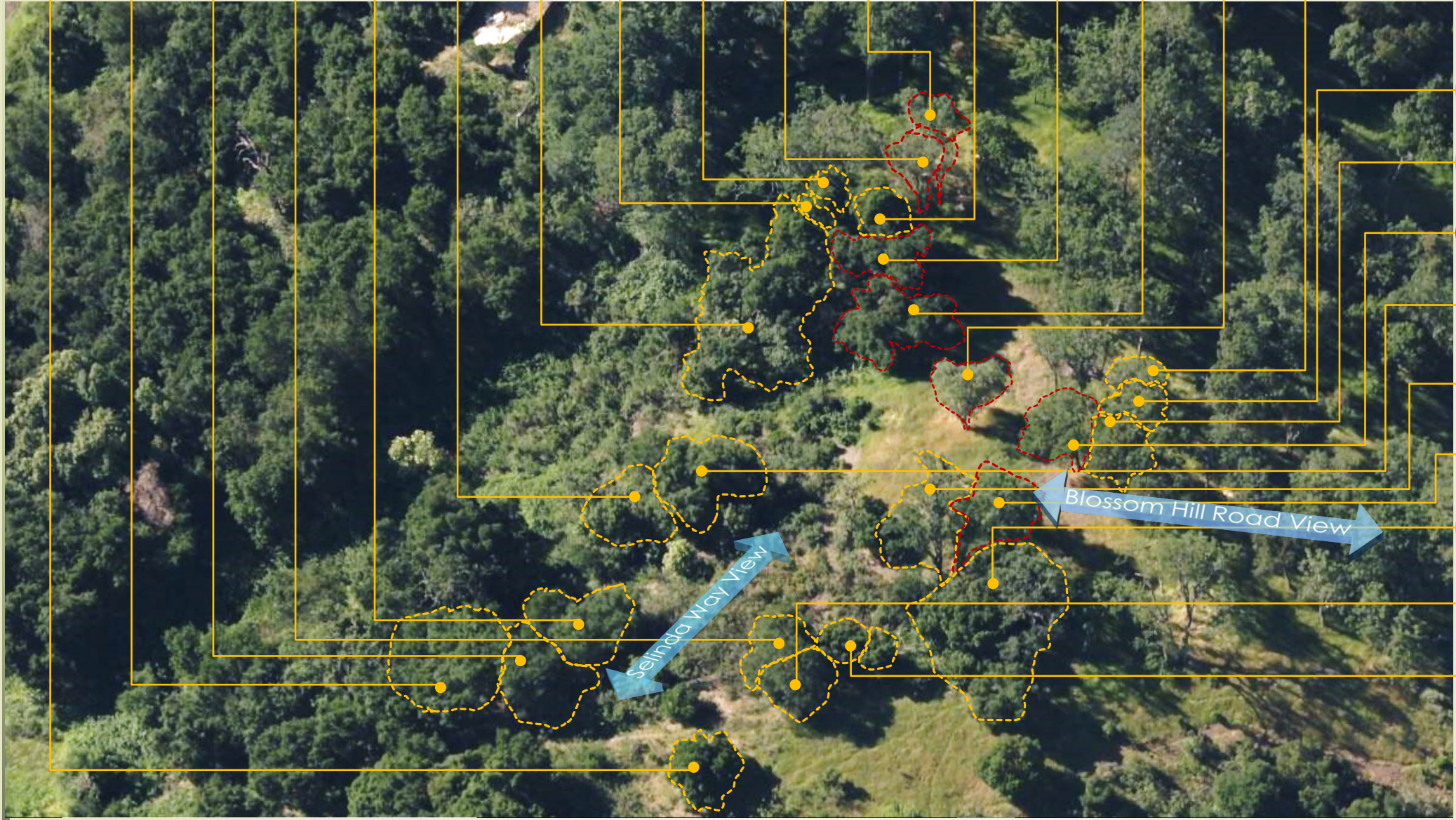




► Trees used for screening are identified with an orange outline. Trees proposed to be removed are identified by red outline

- Z6
- Y3
- Y2
- Z5
- Y1
- X2
- 244
- 685
- 684
- 679
680
- 656
- 678
- 677
- 676
- 675
- 661

Srusti Architects (408) 507 8138 www.srustiarchitects.com



- 663
- 664
- 662
- X1
- 669
- 668
- 670
- Z4
- Z2
Z3

Trees used for screening are identified with an orange outline. Trees proposed to be removed are identified by red outline

- 658
- 677
- 622
- 675
- 674
- 671
- 668
- 670
- 669
- Z2
Z3
- Z4
- Z6
- Z5
- Y1
- Y2
- X1
- X2



- Y3
- 676
- 244
- 678
- 679
- 680
- 656
- 657



Srusti Architects (408) 507 8138 www.srustiarchitects.com

Aerial view from South

Building Outline

Existing Grade +694'0"

Roofline +710'0"



Due to dense healthy tree cover & only a few trees proposed to be removed, 0% of the home surface would be seen from Blossom Hill Observation Area

Area of Visible Home = 0 sf = 0%

- 670
- 669
- 668
671
- 661
663
664
- 662
- 675
660
- 622
624
626
- 676
677
- 626



Srusti Architects (408) 507 8138 www.srustiarchitects.com

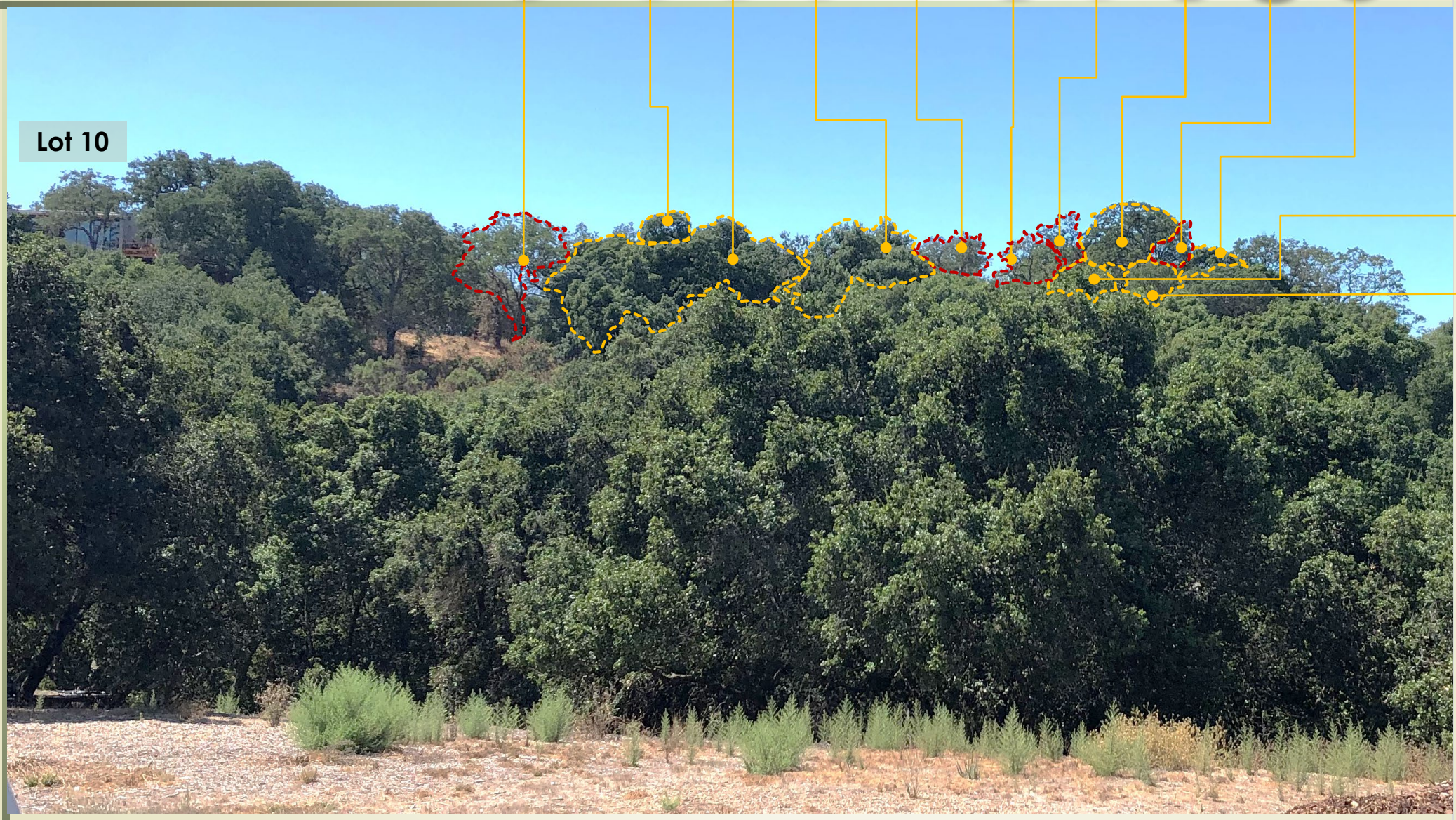


► Trees used for screening are identified with an orange outline. Trees proposed to be removed are identified by red outline

www.srustiarchitects.com

- 679
680
- 678
- 244
- X1
- 675
- 674
- 671
- 669
- 668
- 670

Lot 10

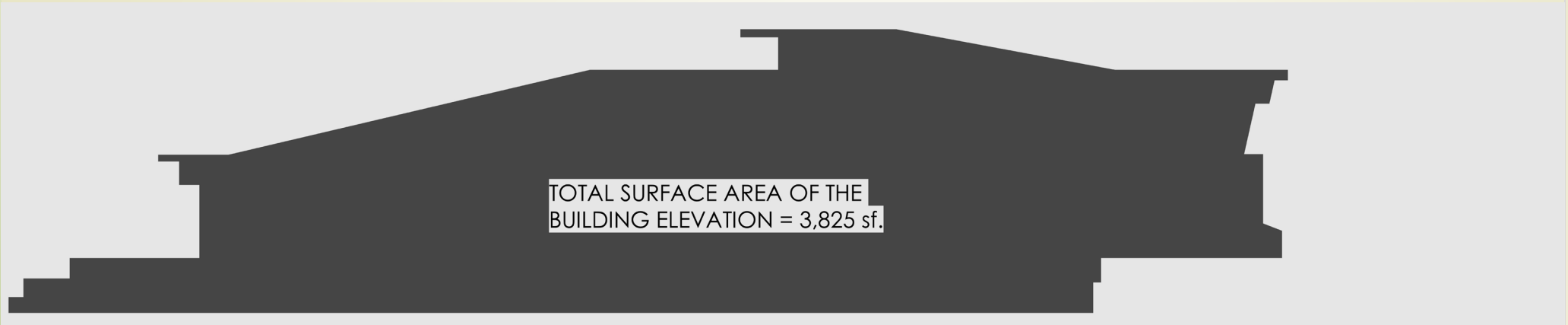


- Z6
- Z4



View from Francis Oaks Road





Existing Grade
+694'0"

Roofline
+710'0"





Building Area
3,825 sf.

Building Area seen
917 sf. < 24%

Existing Grade
+694'0"

Roofline
+710'0"



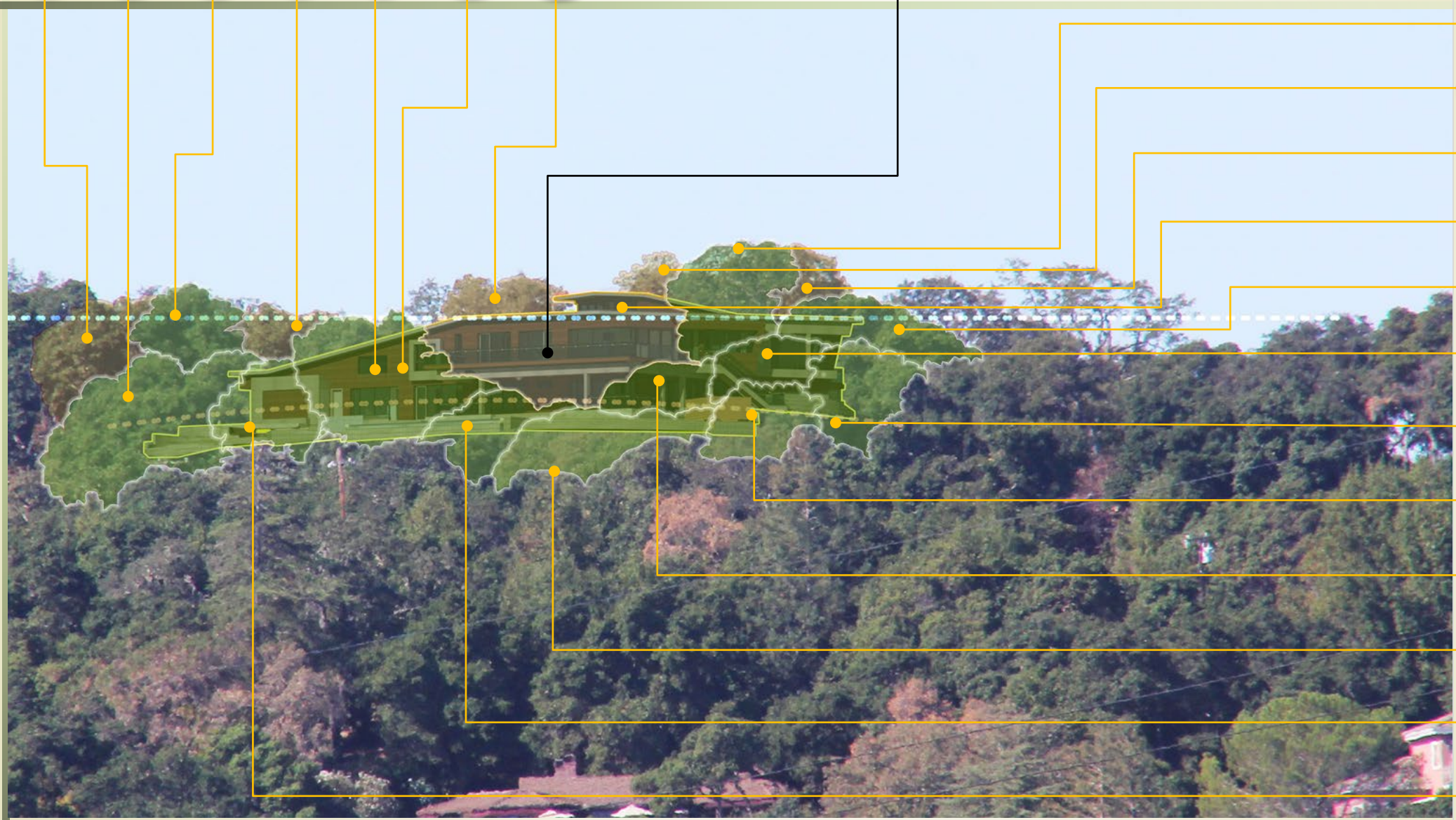
Total surface area of the building elevation = 3,825 sf.

Area of Visible Home = 917 sf = 24%

- 679
680
- 244
- 678
- 677
- X2
- X1
- 675

Building area seen after tree removal
917 sf. < 24%

www.srustiarchitects.com
507 8138 (408) Srusti Architects



- 669
- 671
- 668
- 674
- 670
- Z2
Z3
- Trees below 670
- Z6
- Z4
Z5
- Trees below 674
- Y1
Y2
- Y3

Enlarged Selinda Way Telephoto Lens View

- Unless the observer is at least a mile away from the site, it cannot be seen. Given that distance one cannot distinguish the home with a naked eye. This home with low LRV surface material values, **even when seen with 300 mm telephoto lens**, it will have very little impact to the hillside views, from Selinda Way viewing area.

