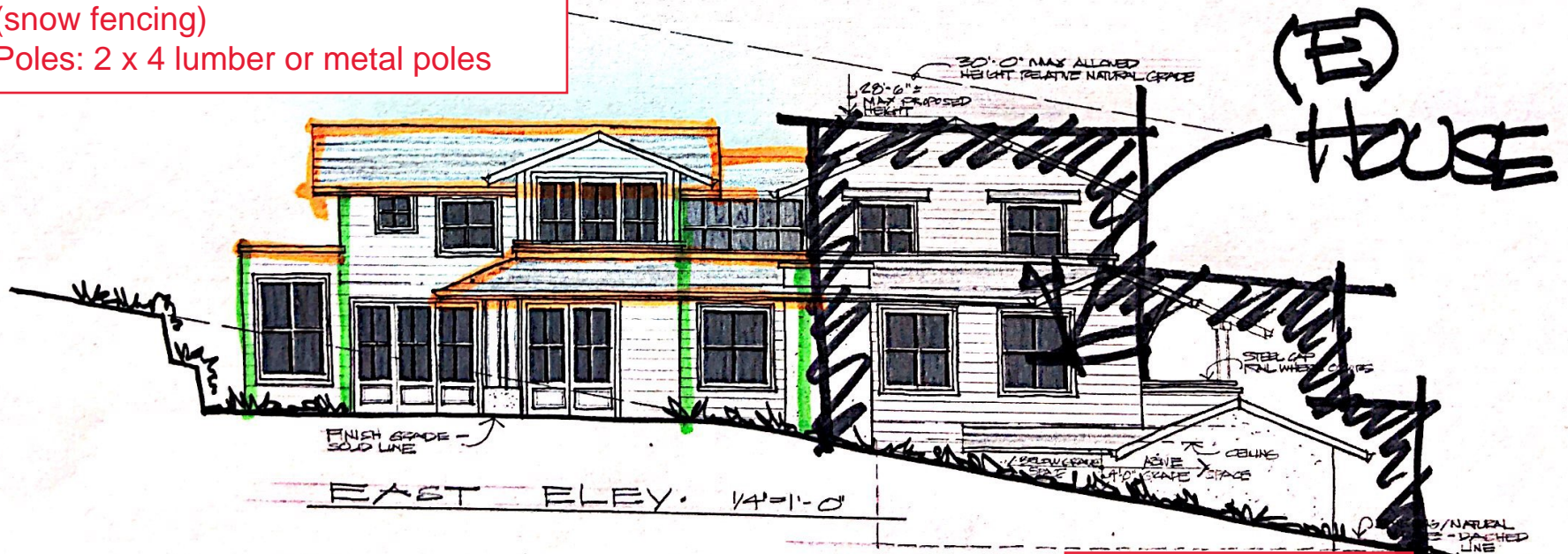


Provide 5' measurements on one of the poles on each elevation.
 Materials:
 Netting: 24" wide plastic orange mesh (snow fencing)
 Poles: 2 x 4 lumber or metal poles



APPROVED
Seffadin
 Story Pole Only
 06/22/20

Print date: 4/6/20
 2/20/20
 1/10/20

JAY PLETT
 ARCHITECT

408.354.4551
 jay@plett-arc.com
 www.ple-tt-arc.com
 213 Bean Avenue
 Los Gatos, CA 95030

THE DE MATTEI RES
 101 BROADWAY
 LOS GATOS CA

Revised by: JAY PLETT

This document contains original copyrighted material as a representation of service by the architect JAY PLETT. These drawings shall not be used or reproduced without the permission of the architect in writing. The design remains the sole property of JAY PLETT.

Revisions:

PRELIM/HPC	1
PLAN OK	1
PRICING SET	1
CONST. SET	1

Scale:
 Date:
 Sheet
 A-0

APPROVED
Scott Malbin
 Story Pole Only
 06/22/20

Print date: 4/4/20
 1/7/20
 JAY PLETT

408.354.4551
 jay@plett-arc.com
 www.plett-arc.com
 213 Bacon Avenue
 Los Gatos, CA 95030

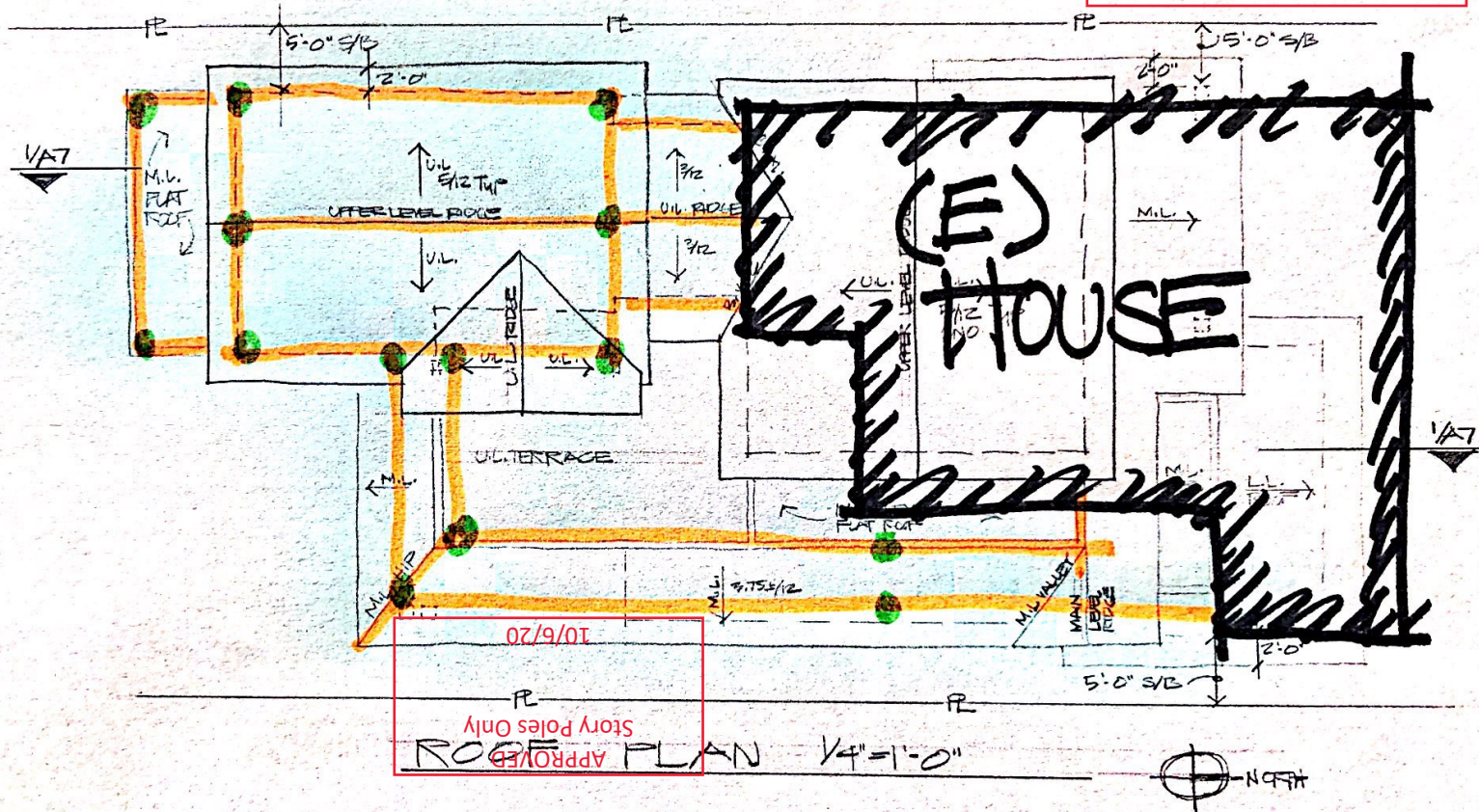
THE DE MATTEI RES
 101 BROADWAY
 LOS GATOS CA

Copyright © JAY PLETT
 The document and/or the drawings
 reported as an approval
 of services by the
 architect JAY PLETT.
 These documents and/or
 drawings are to be
 used only for the
 purposes of the design
 project. The design
 remains the sole
 property of JAY PLETT

Revisions:

PRELIM PLAN SET
 PLAN SET
 PRICING SET
 CONST. SET

Sheet
 A-5

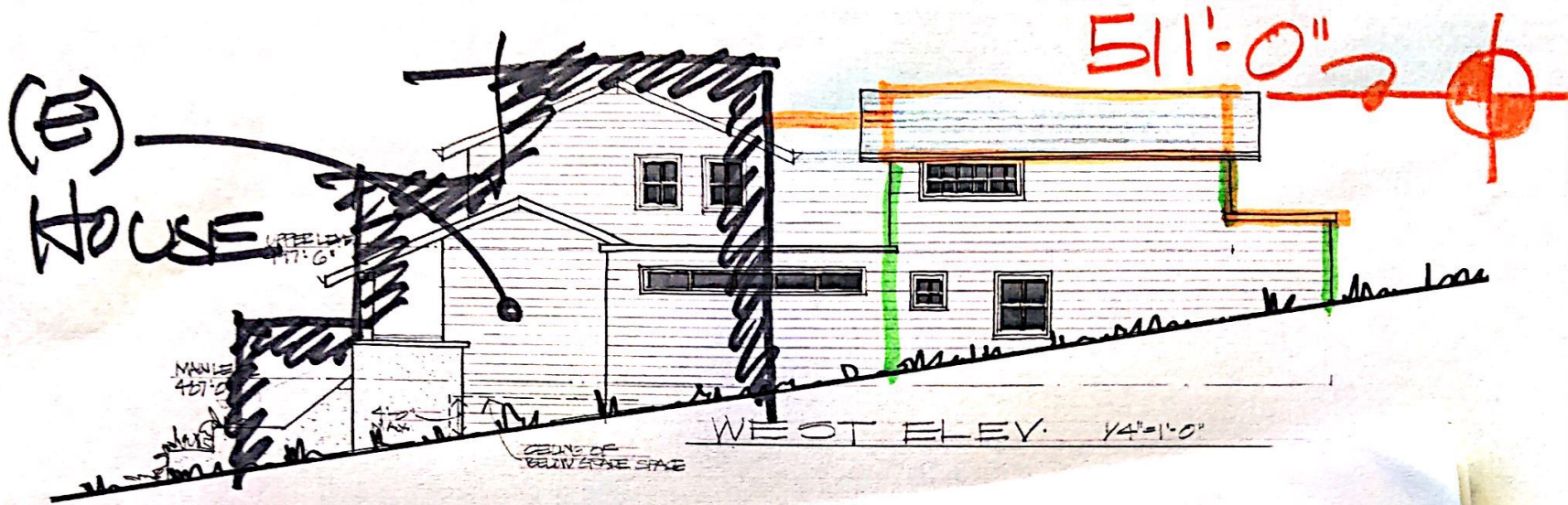


10/6/20
 Story Poles Only
 APPROVED

ROOF PLAN 1/4" = 1'-0"

NETTING
 POLES

Provide 5' measurements on one of the poles on each elevation.
 Materials:
 Netting: 24" wide plastic orange mesh (snow fencing)
 Poles: 2 x 4 lumber or metal poles



Print date:

4/18/20
2/19/20
1/19/20
JAY PLETT
ARCHITECT

408 354 4551
jay@plett-arc.com
www.plett-arc.com
213 Basin Avenue
Los Gatos, CA 95030

THE DE MATTEI RES
101 BROADWAY
LOS GATOS, CA

copyright © JAY PLETT
This document contains original copyrighted material as an instrument of service by the architect JAY PLETT. These documents shall not be copied, altered, or distributed without the permission of the architect in writing. The design remains the sole property of JAY PLETT.

Revisions:

PRELIM/PHC
PLAN CK
PRICING SET
CONST SET

Scale:
Date:

Sheet
A-7

APPROVED
Seethalbin
Story Pole Only
06/22/20

Provide 5' measurements on one of the poles on each elevation.
Materials:
Netting: 24" wide plastic orange mesh (snow fencing)
Poles: 2 x 4 lumber or metal poles

*This Page
Intentionally
Left Blank*