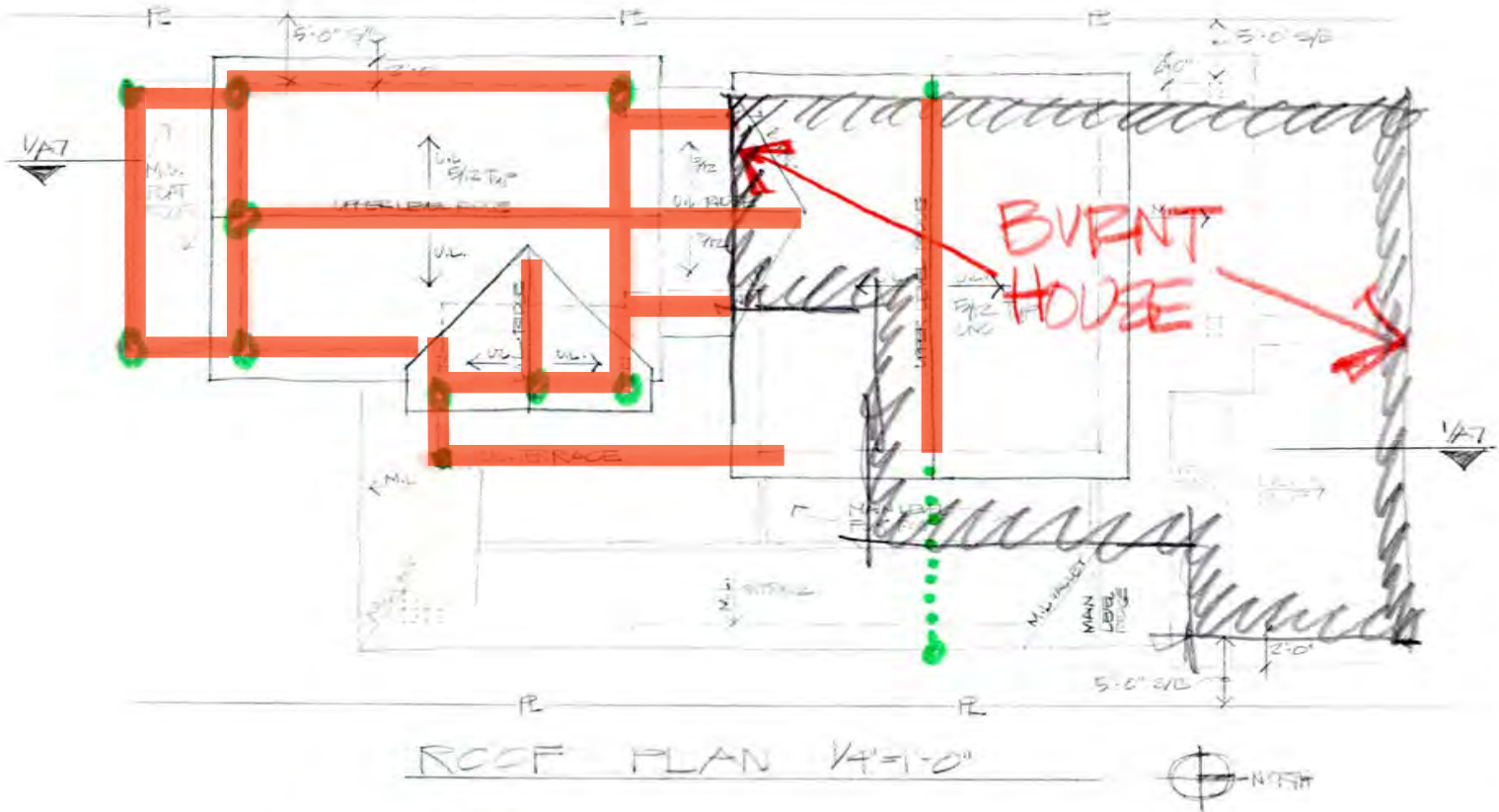


Provide 5' measurements on one of the poles on each elevation.  
 Materials: Netting: 24" wide plastic orange mesh (snow fencing) Poles: 2 x 4 lumber or metal poles

10.6.20



— NETTING  
 ● POLES

APPROVED  
 Story Poles Only  
*Seth Adkin*  
 10/6/20

1/2

EXHIBIT 16

Project name:  
 4/0/20  
 17820  
 JAY PLETT

408.354.4551  
 jay@plett-ar.com  
 www.plett-ar.com  
 213 Bean Avenue  
 Los Gatos, CA 95030

THE DE WATTELL RES  
 101 BROADWAY  
 LOS GATOS CA

Copyright © JAY PLETT  
 The document constitutes original architectural material as an instrument of service in the manner of JAY PLETT. These documents and not be used or reproduced without the permission of the designer in writing. The design requires the sole property of JAY PLETT

Revisions:

PRELIM/PHASE	X
PLAN CK	
PRICING SET	
CONST. SET	

Scale:  
 Date: \_\_\_\_\_  
 Sheet  
 A-5



Provide 5' measurements on one of the poles on each elevation.  
 Materials: Netting: 24" wide plastic orange mesh (snow fencing) Poles: 2 x 4 lumber or metal poles



511'-6"



10.6.20

APPROVED  
 Story Poles Only  
*Seth Mallin*  
 10/6/20

Print date: 4/6/20  
 10/6/20  
 10/6/20  
**JAY PLETT**  
 408.354.4551  
 jay@plett-arc.com  
 www.pleTT-arc.com  
 213 Bean Avenue  
 Los Gatos, CA 95030

THE DE NATEL RED  
 101 BROADWAY  
 LOS GATOS CA

DESIGNED BY JAY PLETT

The document contains original copyrighted material as an instrument of service to the architect JAY PLETT. These documents are not to be utilized and/or duplicated without the permission of the designer in writing. The design herein is the sole property of JAY PLETT

Revisions:


PRELIM/HPG   
 PLAN GC   
 PRICING SET   
 CONST. SET

Scale:  
 Date: Sheet  
 A-6