

CONSULTING ARCHITECT RESPONSE:

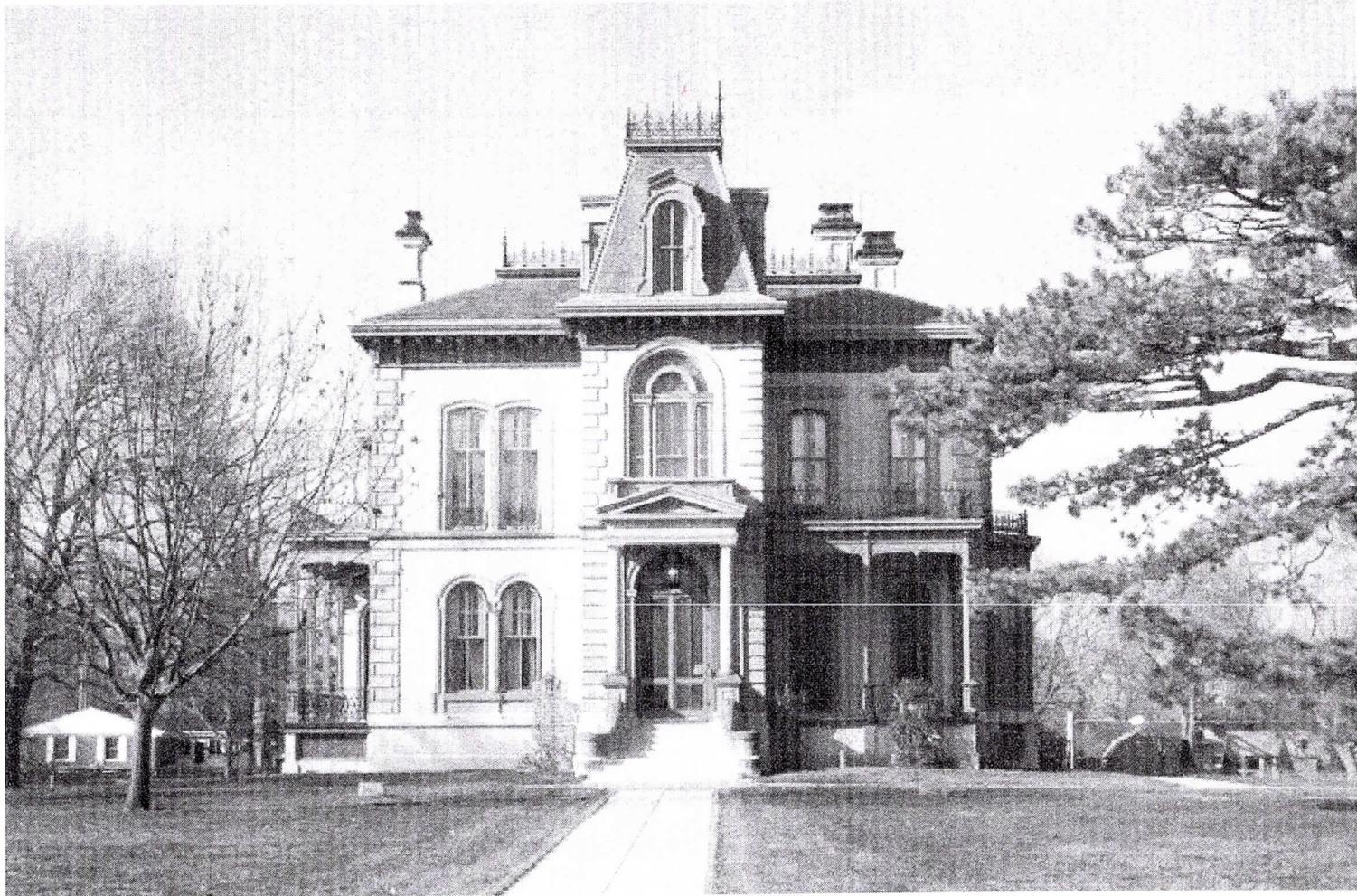
FRONT ENTRY GABLE

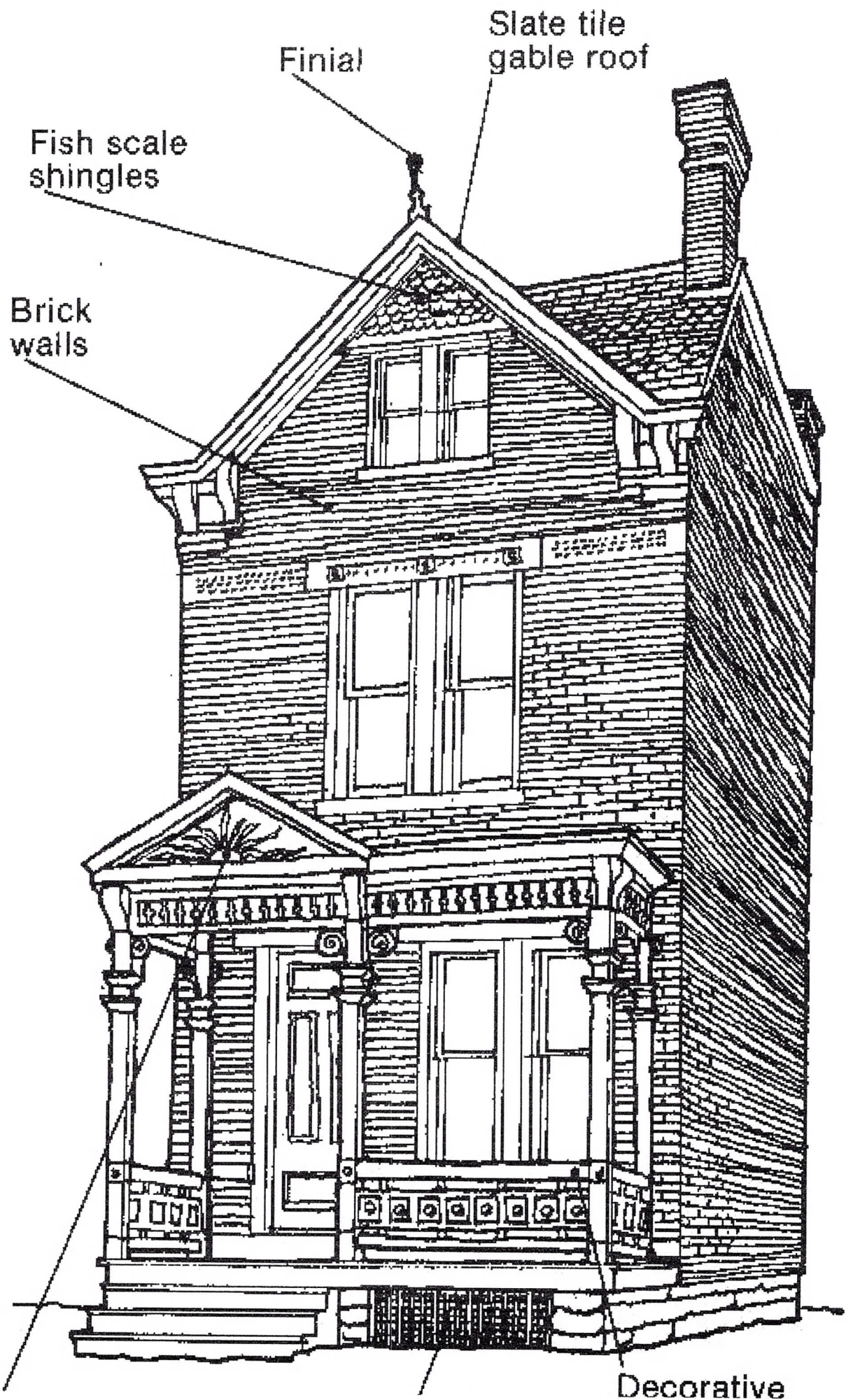
THE GABLE PROPOSED AT THE ENTRY IS AN APPROPRIATE ITALIANATE FEATURE WE WOULD LIKE TO RETAIN. SEE ATTACHED PHOTOS OF EXAMPLES.

HOWEVER, CONSULTING ARCHITECT SUGGESTED THE PORCH SHOULD BE SETBACK FARTHER, WHICH WE HAVE INCORPORATED INTO OUR DESIGN. REFER TO BUILDING ELEVATIONS.

REAR POSTS

OUR DESIGN HAS INCORPORATED THE USE OF DOUBLE COLUMNS AT THE REAR VERANDA, IN LIEU OF SINGLE COLUMNS AS SUGGESTED. WE BELIEVE THE USE OF DOUBLE COLUMNS PROVIDES APPROPRIATE SUPPORT MASSING FOR THE STYLE.





Finial

Slate tile
gable roof

Fish scale
shingles

Brick
walls

Decorative

