

SURVEYOR'S CERTIFICATE
 This map correctly represents a survey made under my direction in conformance with the requirements of Chapter 15 of Division 3 of the Business and Professions Code at the request of Arthur H. Downing in January, 1962.

Henry D. Gilbert
 Licensed Land Surveyor No. 2693

COUNTY SURVEYOR'S CERTIFICATE

This map has been examined for conformance with the provisions of Chapter 15 of Division 3 of the Business and Professions Code this First day of March 1962.

JAMES T. POTT, County Surveyor

By _____ Deputy

BASIS OF BEARINGS & NOTES

The bearing (N89°45'E) of the center line of Los Gatos - Almaden Road as shown on Record of Survey Map recorded in Book 83 of Maps, page 41, was used as basis of bearings shown upon this map.

- Indicates iron pipe found, unless otherwise noted.
- Indicates iron pipe set.

COUNTY RECORDER'S CERTIFICATE

Filing Fee \$ 5.00 Paid File No. 215 1976
 Filed for record this 5th day of March 1962 at 3:58 P.M. in Book 143 of Maps at Page 33, at the request of Mark Thomas & Co., Inc.

PAUL R. TEILH, County Recorder

By *Donald R. Palmer* Deputy

RECORD OF SURVEY
 OF PORTIONS OF N.E. 1/4 OF SECTION 14
 TOWNSHIP 8 SOUTH, RANGE 1 WEST, M.D.M.
 SANTA CLARA COUNTY CALIFORNIA

FOR
ARTHUR H. DOWNING

SCALE - 1" = 100'

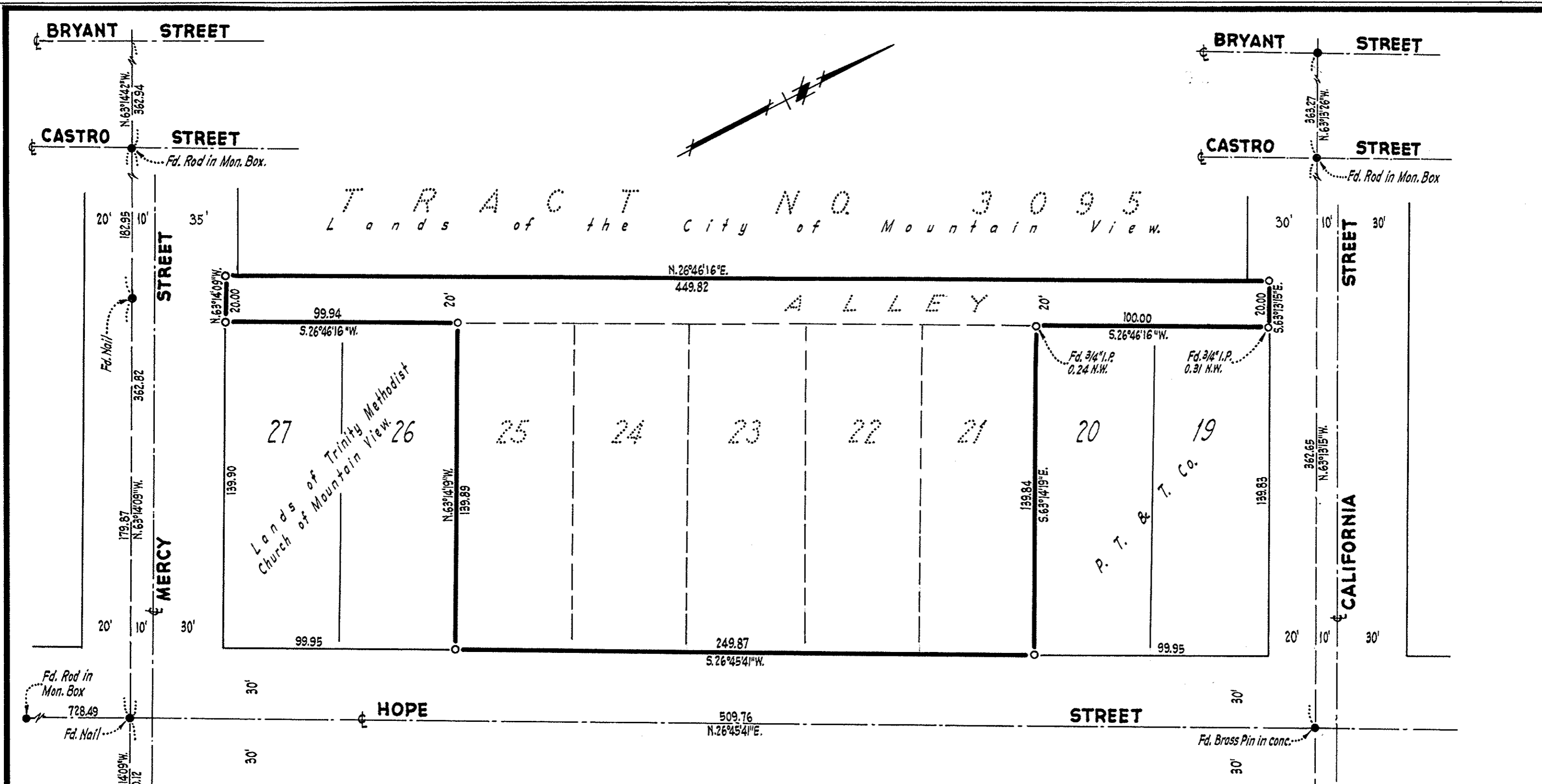
JANUARY 1962

MARK THOMAS & CO INC
 CIVIL ENGINEERS & SURVEYORS
 SAN JOSE CALIF.

JOB NO 60347

33

33



BASIS OF BEARINGS

The bearing S.26°45'41"W of the centerline of Hope Street as shown on that certain map of Tract No. 3095 as recorded in Book 141 of Maps of page 6, Santa Clara County Records, was taken as the basis of bearings shown on this map.

NOTES AND LEGEND

All distances and dimensions are shown in feet and decimals thereof.

- Indicates Monument found.
- Indicates 1" Iron Pipe Monument set.

SURVEYOR'S CERTIFICATE

This map correctly represents a survey made by me or under my direction in conformance with the requirements of Chapter 15 of Division 3 of the Business and Professions Code at the request of the City of Mountain View, in JANUARY, 1962.

George S. Nolte
 LIC. LAND SURVEYOR CERT. NO. 2495

COUNTY SURVEYOR'S CERTIFICATE

This map has been examined for conformance with the requirements of Chapter 15 of Division 3 of the Business and Professions Code this 7th day of MARCH, 1962.

JAMES T. POTT, County Surveyor.

by Deputy *James T. Pott*

RECORDER'S CERTIFICATE

File No. 2153564 Fee \$ 5.00
 Filed for record this 27th day of March 1962, at 3:17 P.M., in Book 143 of Maps at page 33 at the request of George S. Nolte.

PAUL R. TEILH, County Recorder.

by Deputy *Donald R. Palmer*

RECORD OF SURVEY

OF A PORTION OF B.4.S.R.1 E., "MAP OF THE SULLIVAN AND ROGERS

SUBDIVISION IN THE TOWN OF MOUNTAIN VIEW, CALIFORNIA."

MOUNTAIN VIEW, CALIFORNIA.

GEORGE S. NOLTE
 CIVIL ENGINEER - LAND SURVEYOR
 PALO ALTO - SANTA CLARA - WALNUT CREEK - SAN RAFAEL

SCALE: 1" = 40'

JANUARY, 1962.

231-61

33

EXHIBIT 6

33

***This Page
Intentionally
Left Blank***