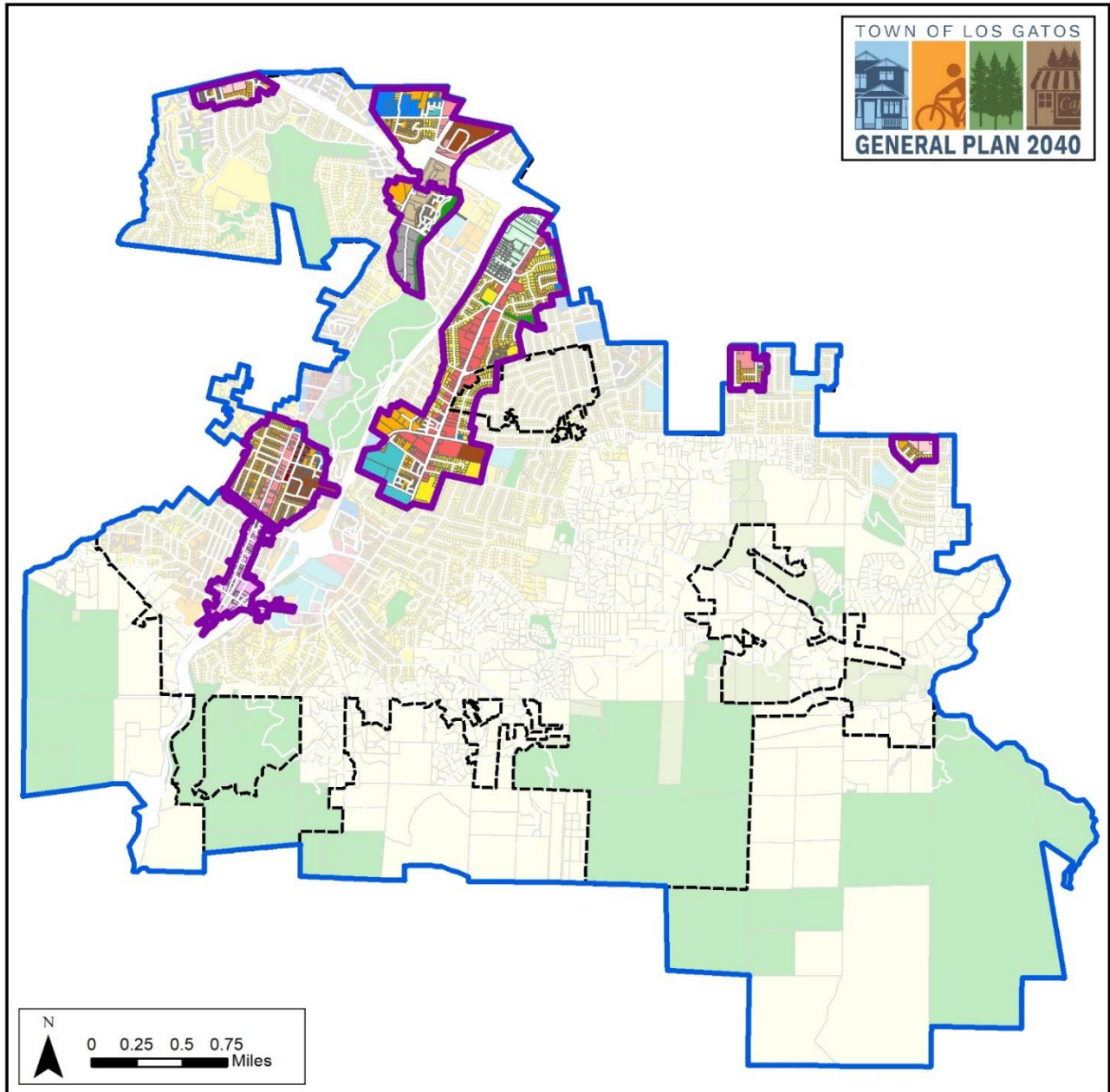













**Figure 1: Community Place Districts**



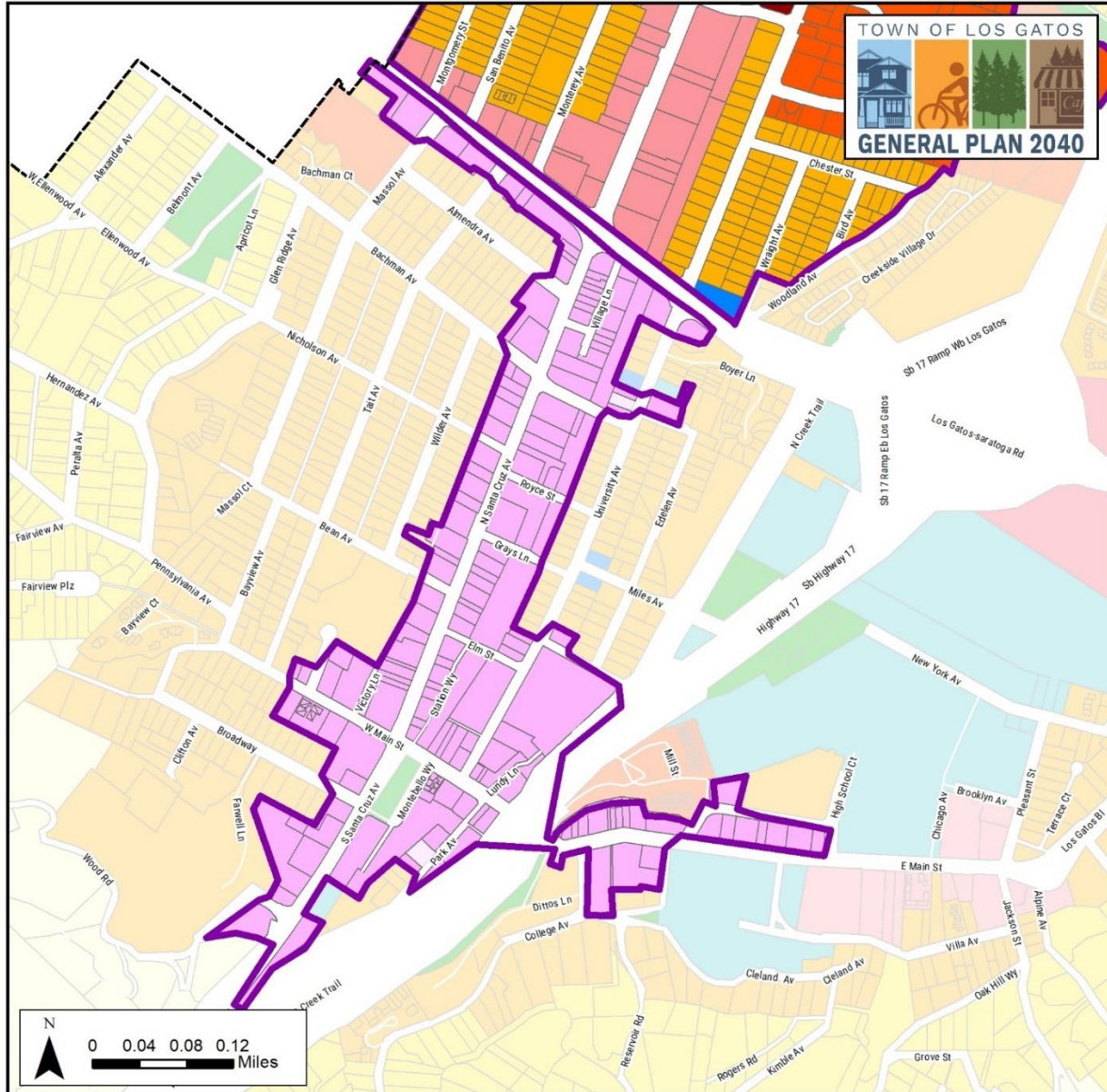
**Land Use Designation**

-  Open Space
-  Agriculture
-  Public
-  Hillside Residential
-  Low Density Residential
-  Medium Density Residential
-  High Density Residential
-  Central Business District

-  Office Professional
-  Neighborhood Commercial
-  Community Commercial
-  Mixed Use
-  Service Commercial
-  Light Industrial
-  Albright Specific Plan
-  North Forty Specific Plan

-  Community Place Districts
-  Town of Los Gatos
-  Planning Area

**Figure 2: Downtown District**



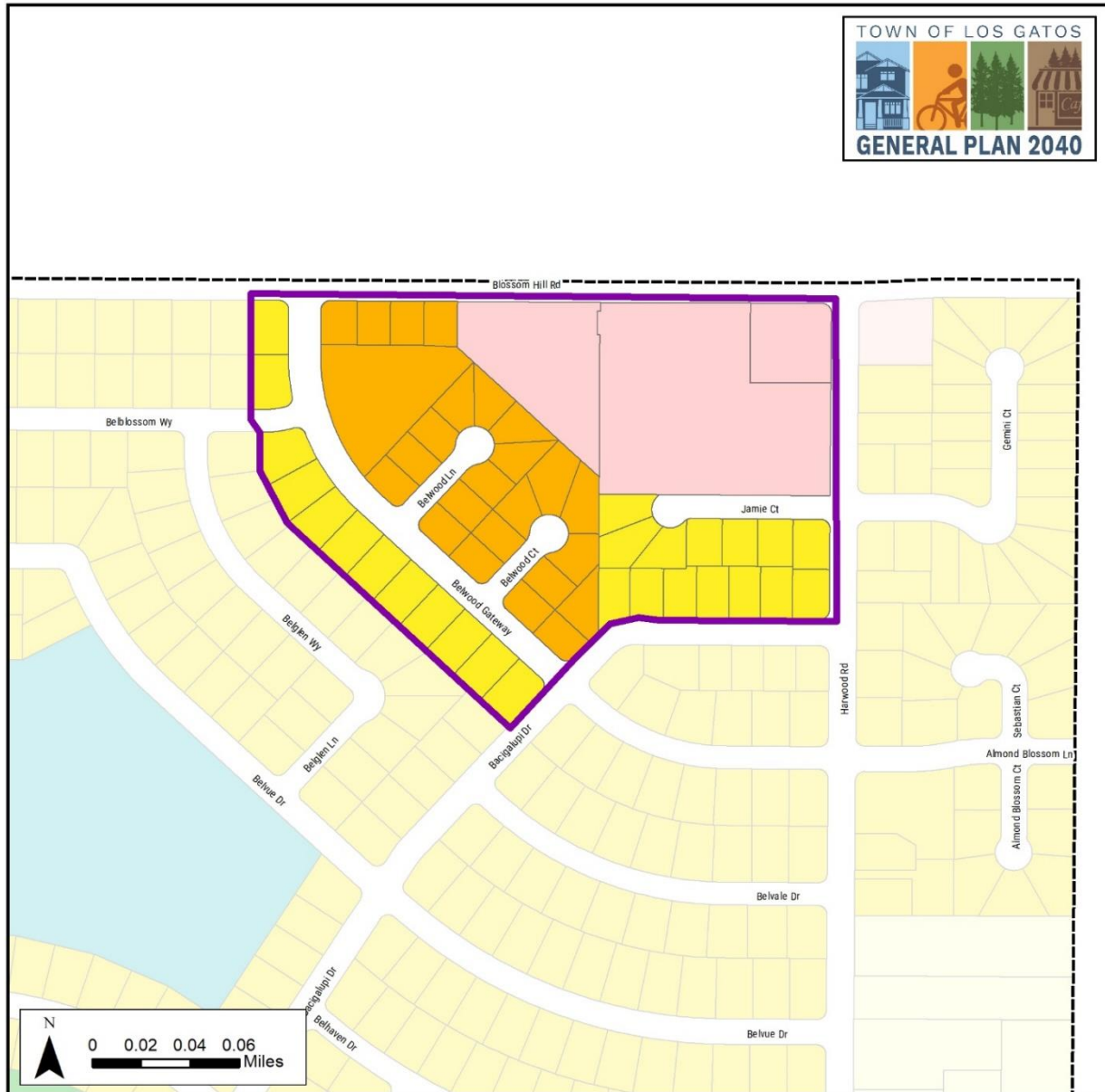
**Land Use Designation**

- Open Space
- Agriculture
- Public
- Hillside Residential
- Low Density Residential
- Me
- High Density Residential
- Central Business District

- Office Professional
- Neighborhood Commercial
- Community Commercial
- Mixed Use Commercial
- Service Commercial
- Light Industrial
- Albright Specific Plan
- North Forty Spec Plan

- Town of Los Gatos
- Community Place Districts

**Figure 3: Harwood Road District**



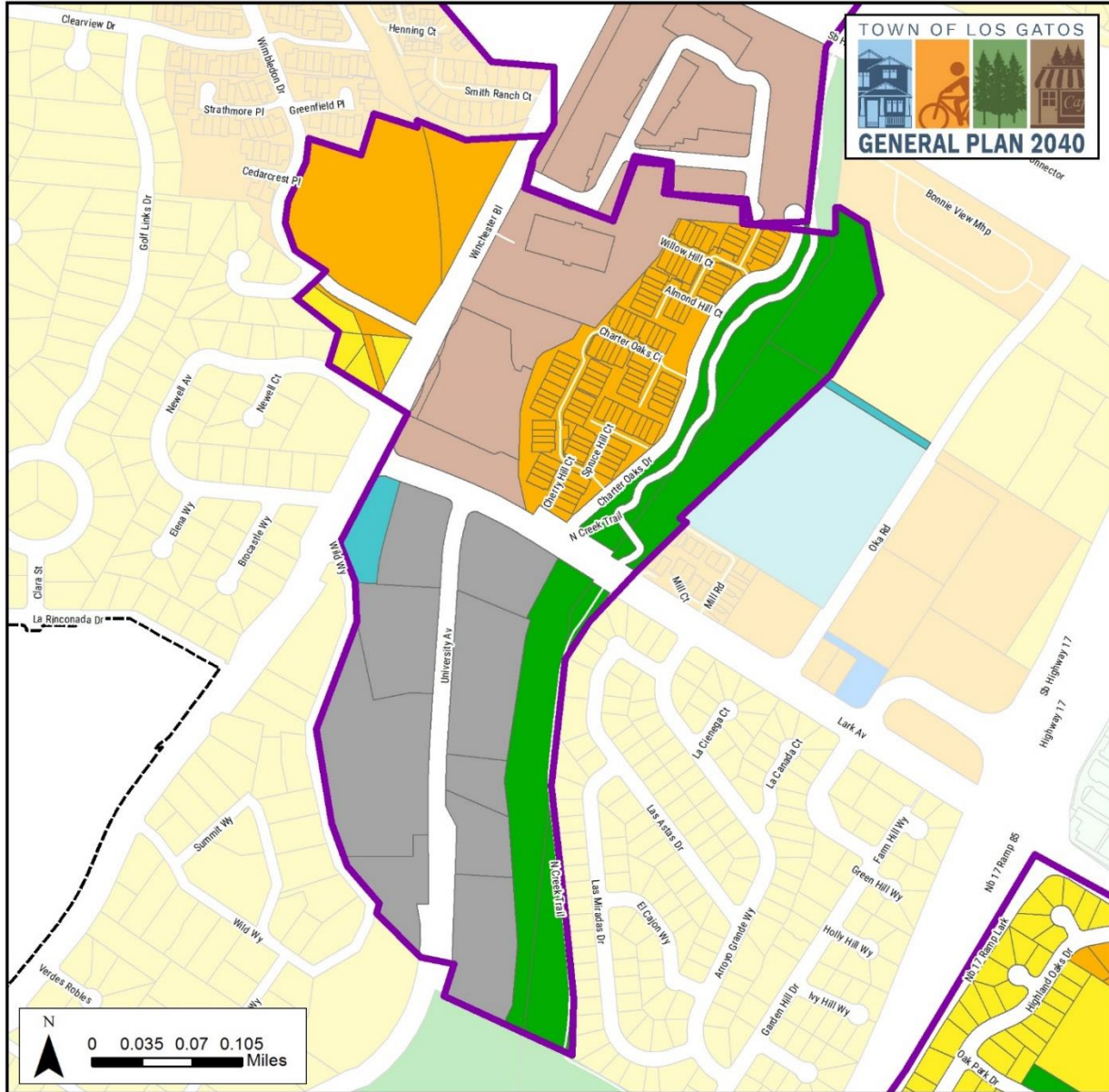
**Land Use Designation**

- Open Space
- Agriculture
- Public
- Hillside Residential
- Low Density Residential
- Medium Density Residential
- High Density Residential
- Central Business District

- Office Professional
- Neighborhood Commercial
- Community Commercial
- Mixed Use Commercial
- Service Commercial
- Light Industrial
- Albright Specific Plan
- North Forty Spec Plan

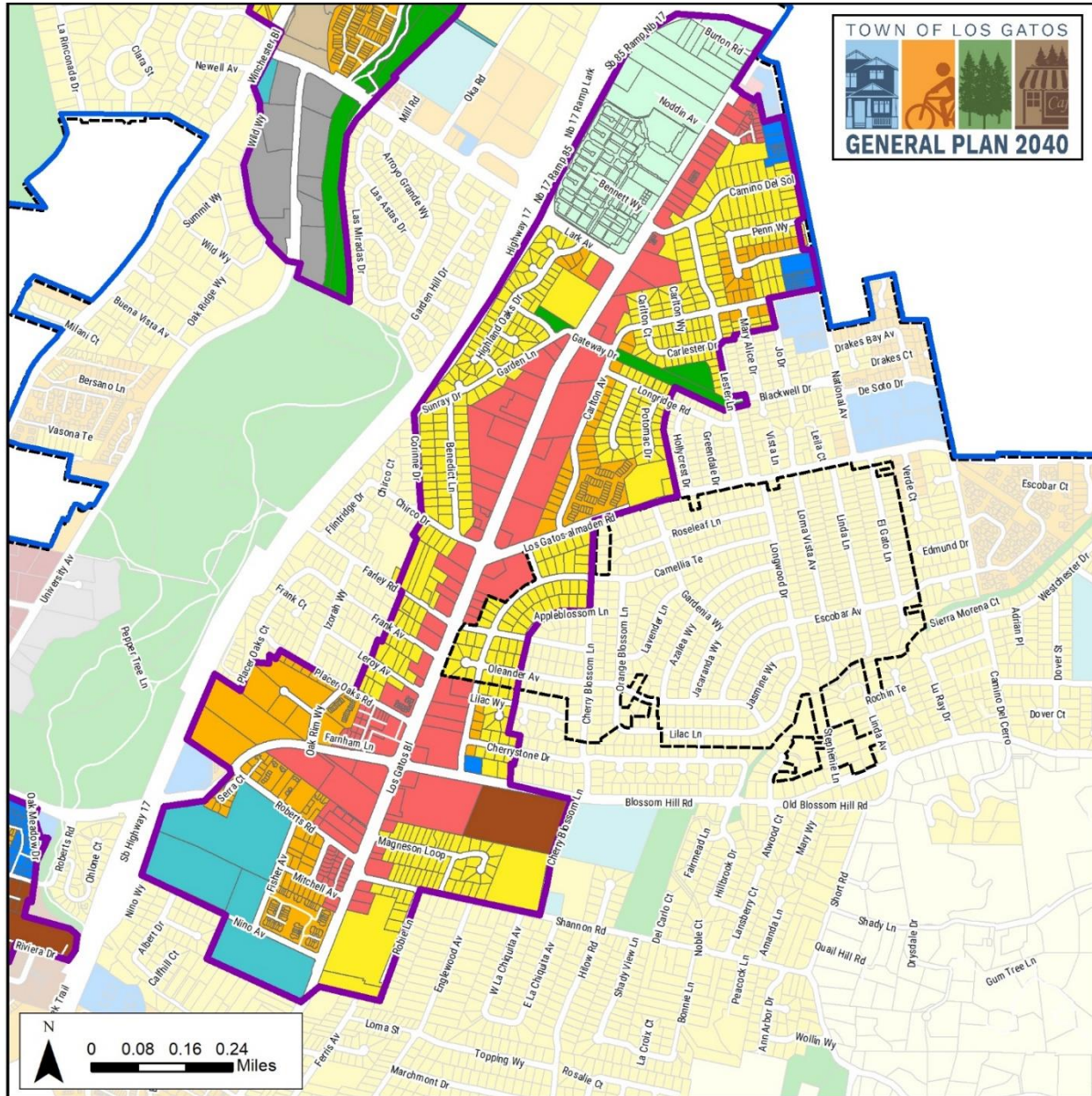
- Town of Los Gatos
- Community Place Districts

**Figure 4: Lark Avenue District**



<b>Land Use Designation</b>	 Office Professional	 Town of Los Gatos
 Open Space	 Neighborhood Commercial	 Community Place Districts
 Agriculture	 Community Commercial	
 Public	 Mixed Use Commercial	
 Hillside Residential	 Service Commercial	
 Low Density Residential	 Light Industrial	
 Medium Density Residential	 Albright Specific Plan	
 High Density Residential	 North Forty Spec Plan	
 Central Business District		

**Figure 5: Los Gatos Boulevard District**



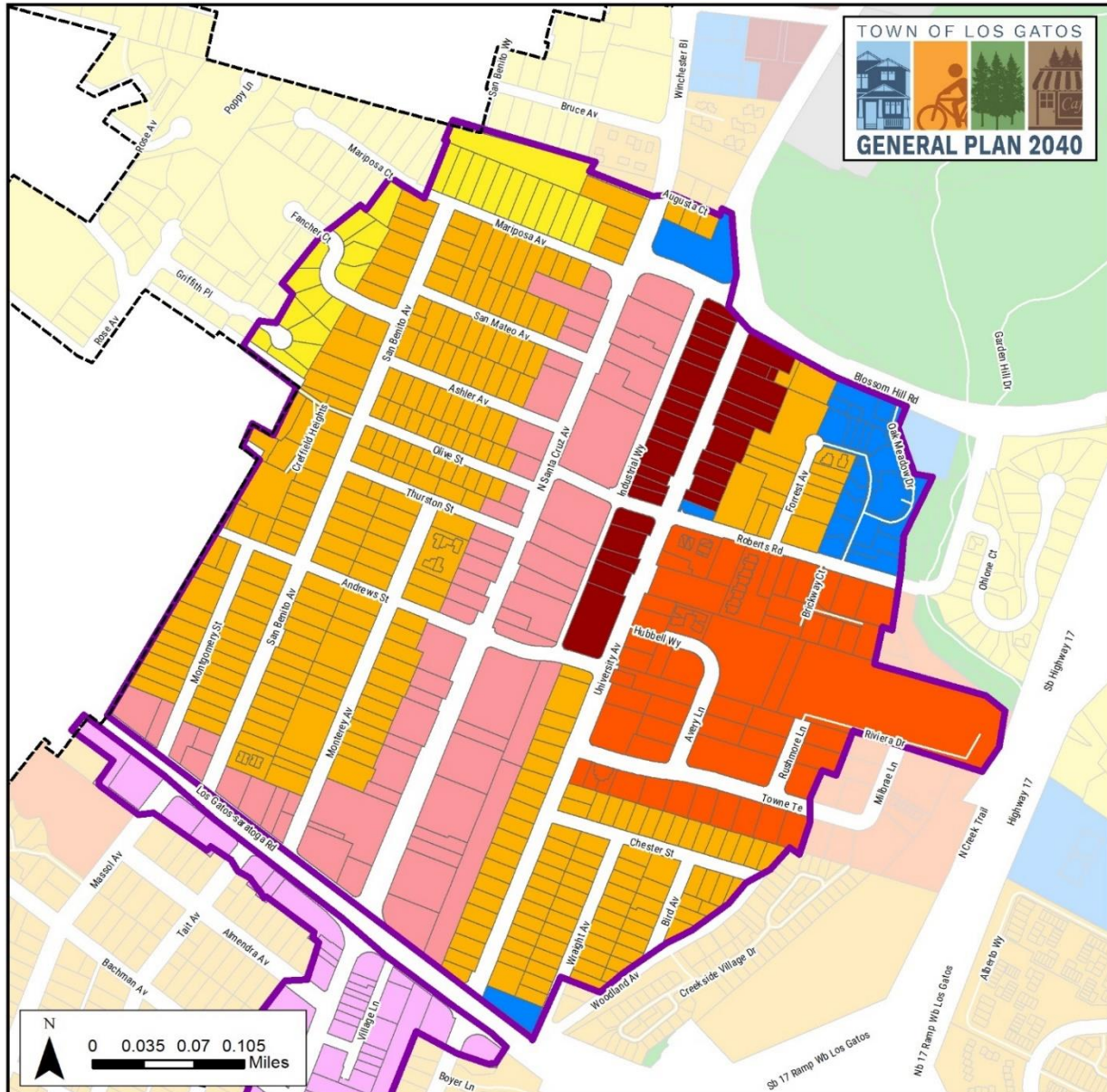
**Land Use Designation**

- Open Space
- Agriculture
- Public
- Hillside Residential
- Low Density Residential
- Medium Density Residential
- High Density Residential
- Central Business District

- Office Professional
- Neighborhood Commercial
- Community Commercial
- Mixed Use
- Service Commercial
- Light Industrial
- Albright Specific Plan
- North Forty Specific Plan

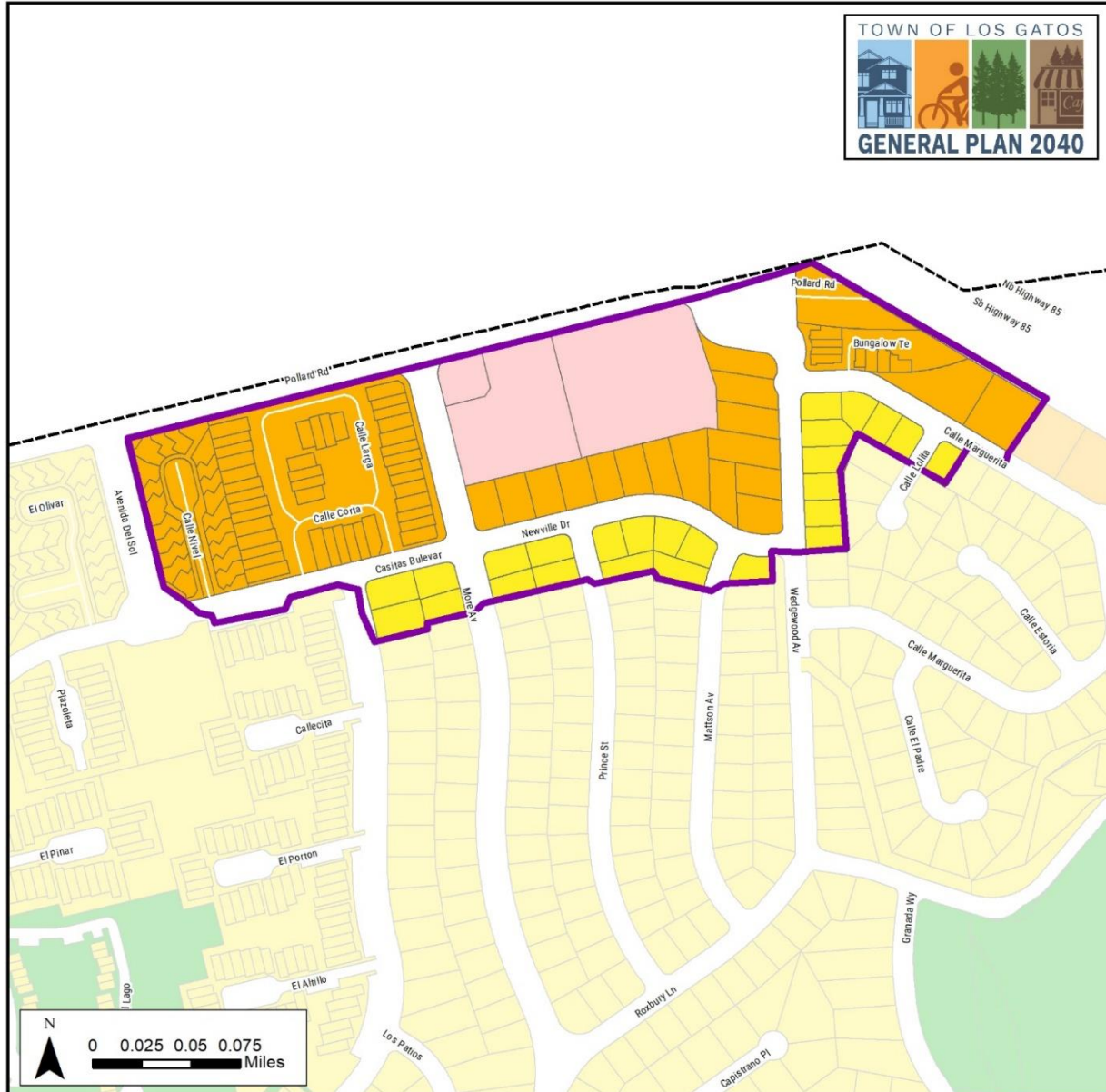
- Community Place Districts
- Town of Los Gatos
- Planning Area

**Figure 6: North Santa Cruz Avenue District**



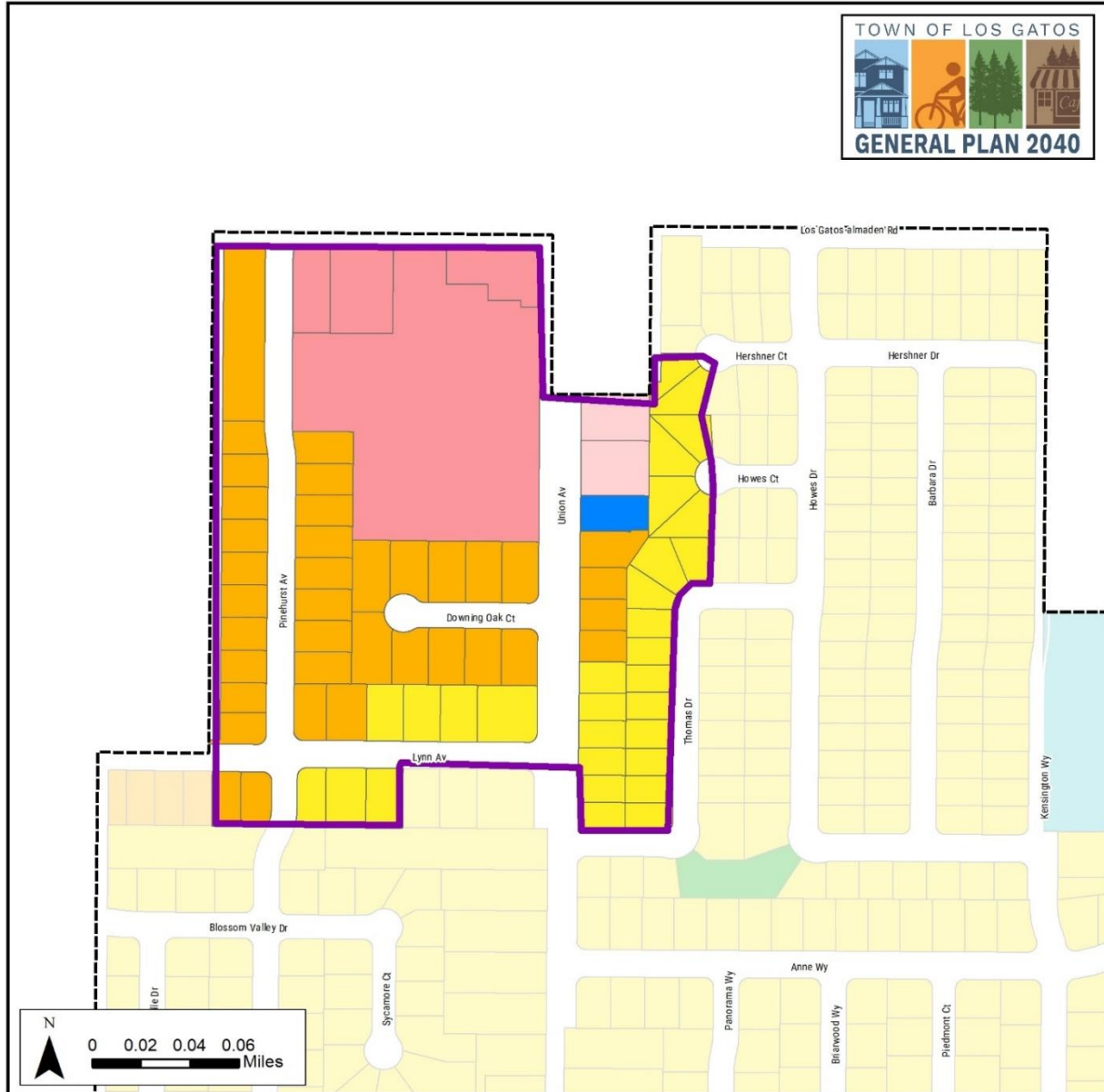
- |  |   |  |
|--|---|--|
| <b>Land Use Designation</b>  |  Office Professional     |  Town of Los Gatos         |
|  Open Space                 |  Neighborhood Commercial |  Community Place Districts |
|  Agriculture                |  Community Commercial    |  |
|  Public                     |  Mixed Use Commercial    |  |
|  Hillside Residential       |  Service Commercial      |  |
|  Low Density Residential    |  Light Industrial        |  |
|  Medium Density Residential |  Albright Specific Plan  |  |
|  High Density Residential   |  North Forty Spec Plan   |  |
|  Central Business District  |   |  |

**Figure 7: Pollard Road District**



- |  |   |  |
|--|---|--|
| <b>Land Use Designation</b>  |  Office Professional     |  Town of Los Gatos         |
|  Open Space                 |  Neighborhood Commercial |  Community Place Districts |
|  Agriculture                |  Community Commercial    |  |
|  Public                     |  Mixed Use Commercial    |  |
|  Hillside Residential       |  Service Commercial      |  |
|  Low Density Residential    |  Light Industrial        |  |
|  Medium Density Residential |  Albright Specific Plan  |  |
|  High Density Residential   |  North Forty Spec Plan   |  |
|  Central Business District  |   |  |

**Figure 8: Union Avenue District**



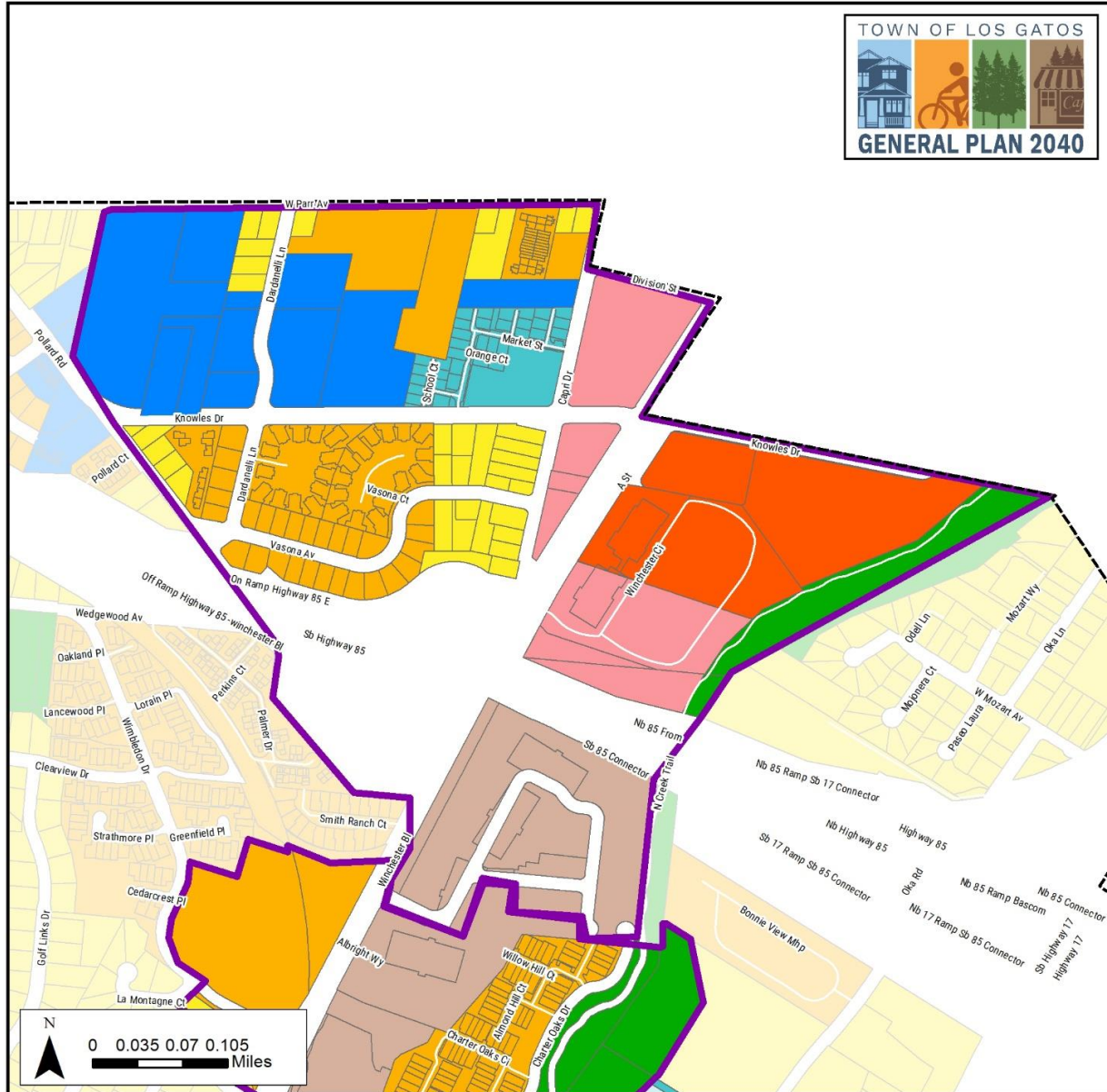
**Land Use Designation**

- Open Space
- Agriculture
- Public
- Hillside Residential
- Low Density Residential
- Medium Density Residential
- High Density Residential
- Central Business District
- Office Professional
- Neighborhood Commercial
- Community Commercial
- Mixed Use Commercial
- Service Commercial
- Light Industrial
- Albright Specific Plan
- North Forty Spec Plan

- Town of Los Gatos
- Community Place Districts



**Figure 9: Winchester Boulevard District**



<b>Land Use Designation</b>	 Office Professional	 Town of Los Gatos
 Open Space	 Neighborhood Commercial	 Community Place Districts
 Agriculture	 Community Commercial	
 Public	 Mixed Use Commercial	
 Hillside Residential	 Service Commercial	
 Low Density Residential	 Light Industrial	
 Medium Density Residential	 Albright Specific Plan	
 High Density Residential	 North Forty Spec Plan	
 Central Business District		