



Arborist Report Update

**Los Gatos Meadows
Los Gatos, CA**

**PREPARED FOR
Covia
2185 N. California Blvd. Suite 215
Walnut Creek, CA 94596**

**PREPARED BY:
HortScience | Bartlett Consulting
325 Ray St.
Pleasanton, CA 94566**

October 12, 2020



**Arborist Report Update
Los Gatos Meadows
Los Gatos, CA**

Table of Contents

| | Page |
|---|-------------|
| Executive Summary | 1 |
| Introduction and Overview | 1 |
| Tree Assessment Methods | 2 |
| Description of Trees | 2 |
| Suitability for Preservation | 7 |
| Evaluation of Impacts and Recommendations | 9 |
| Appraisal of Value | 10 |
| Sudden Oak Death | 10 |
| Tree Preservation Guidelines | 11 |

List of Tables

| | |
|---|---|
| Table 1. Condition ratings and frequency of occurrence of trees | 3 |
| Table 2. Tree suitability for preservation | 9 |

Exhibits

Tree Assessment Plan
Tree Assessment
Tree Disposition
Tree Appraisal

Arborist Report Update

Los Gatos Meadows

Los Gatos, CA

Executive Summary

Covia is planning to re-develop the Los Gatos Meadows property in Los Gatos, CA. Trees were assessed on June 26 and 27, 2018. The assessment included all trees 4" and greater in diameter, located within and adjacent to the project area.

Three hundred seventy-five (375) trees representing 57 species were evaluated (Table 1). For all species combined, trees were in fair (42% of population) to poor (36% of population) condition with 22% of trees in good condition. One off-site tree (#251) was included in the assessment. No street trees had canopies over the project area.

The Town of Los Gatos protects all trees 4" and larger on sites being developed (Municipal Code Section 29.10). Certain species of designated sizes are excepted per Section 29.10.0970. Based on this definition, 338 of the original 375 trees were protected. These trees cannot be removed or pruned more than 25% without a permit.

Based on my evaluation of the plans:

- Two hundred twelve (213) trees will be removed (205 Protected, 8 Large Protected).
- One hundred eighteen (118) trees will be preserved (109 Protected, 9 Large Protected)

In 2019, selected trees were removed in response to a Wildland Urban Interface fire management review and the resulting Tree Management Plan prepared by HortScience | Bartlett Consulting (3/27/19). This Arborist Report incorporates the data on trees removed and responds to a Arborist's Review letter prepared by Monarch Consulting Arborists (July 6, 2020). Forty-four (44) trees were removed and three hundred thirty-one (331) trees remain.

The primary impacts of the proposed project to trees were expected to be from re-grading the slopes, reorienting and creating new roads, and re-configuring the buildings. I recommend carefully considering how future landscapes will be used before retaining trees with a low suitability for preservation. Impacts to trees being preserved can be minimized by following the **Tree Preservation Guidelines** (below).

Introduction and Overview

Covia is planning to re-develop the Los Gatos Meadows property in Los Gatos, CA. Currently the property is a senior living community with associated landscapes and natural areas. HortScience | Bartlett Consulting was asked to prepare an **Arborist Report** for the site as part of the application to the City of Los Gatos.

This report provides the following information:

1. Assessment of the health and structural condition of the trees within the proposed project area based on a visual inspection from the ground.
2. Evaluation of the impacts to trees based on development plans.
3. Appraisal of value of each tree using the Council of Tree and Landscape Appraisal methodology.
4. Guidelines for tree preservation during the design, construction and maintenance phases of development.

Tree Assessment Methods

Trees were assessed on June 26 and 27, 2018. The assessment included all trees 4" and greater in diameter, located within and adjacent to the project area. Off-site trees with canopies extending over the property line were included in the assessment and viewed from the subject property. The assessment procedure consisted of the following steps:

1. Identifying the tree as to species;
2. Tagging each tree with an identifying number and recording its location on a map; off-site trees were not tagged;
3. Measuring the trunk diameter at a point 54" above grade; for off-site trees diameters were estimated.
4. Evaluating the health and structural condition using a scale of 10%-90% based on a visual inspection from the ground:
 - 90%** - A healthy, vigorous tree, reasonably free of signs and symptom of disease, with good structure and form typical of the species.
 - 70%**- Tree with slight decline in vigor, small amount of twig dieback, minor structural defects that could be corrected.
 - 50%**- Tree with moderate vigor, moderate twig and small branch dieback, thinning of crown, poor leaf color, moderate structural defects that might be mitigated with regular care.
 - 30%** - Tree in decline, epicormic growth, extensive dieback of medium to large branches, significant structural defects that cannot be abated.
 - 10%** - Tree in severe decline, dieback of scaffold branches and/or trunk; most of foliage from epicormics; extensive structural defects that cannot be abated.
5. Rating the suitability for preservation as "high", "moderate" or "low". Suitability for preservation considers the health, age and structural condition of the tree, and its potential to remain an asset to the site for years to come.
 - High:** Trees with good health and structural stability that have the potential for longevity at the site.
 - Moderate:** Trees with somewhat declining health and/or structural defects that can be abated with treatment. The tree will require more intense management and monitoring, and may have shorter life span than those in 'high' category.
 - Low:** Tree in poor health or with significant structural defects that cannot be mitigated. Tree is expected to continue to decline, regardless of treatment. The species or individual may have characteristics that are undesirable for landscapes and generally are unsuited for use areas.

Description of Trees

Three hundred seventy-five (375) trees representing 57 species were evaluated (Table 1). For all species combined, trees were in fair (42% of population) to poor (36% of population) condition with 22% of trees in good condition. One off-site tree (#251) was included in the assessment, and no street trees had canopies over the project area. Descriptions of each tree are found in the ***Tree Assessment***, and approximate locations are plotted on the ***Tree Assessment Plan*** (see Exhibits).

The site was notable for several reasons. The site was on the edge of Los Gatos downtown area where it transitioned into forest. Tree species diversity was high (57 species). Over half of the trees (53%, 7 species) were locally native species generally growing in natural conditions. In addition to the locally native species were:

- California species that are not native to the site such as coast redwood, Monterey pine and incense cedar;
- Common ornamental trees such as purpleleaf plum, eucalyptus and Italian cypress and,
- Less common ornamental trees such as blue blossom, Sitka spruce and white willow.

**Table 1. Condition ratings and frequency of occurrence of trees
 Los Gatos Meadows, Los Gatos, CA**

| Common Name | Scientific Name | Condition | | | Total |
|--------------------------|--------------------------------------|------------------|---------------|------------------|-------|
| | | Poor (10-30%) | Fair (50%) | Good (70-90%) | |
| Bailey acacia | <i>Acacia baileyana</i> | 5 | - | - | 5 |
| Blackwood acacia | <i>Acacia melanoxylon</i> | 4 | 1 | 2 | 7 |
| Bigleaf maple | <i>Acer macrophyllum</i> | 1 | - | - | 1 |
| Japanese maple | <i>Acer palmatum</i> | - | 1 | - | 1 |
| Red maple | <i>Acer rubrum</i> | - | - | 1 | 1 |
| California buckeye | <i>Aesculus californica</i> | - | 2 | - | 2 |
| Red horsechestnut | <i>Aesculus x carnea</i> | 2 | 1 | 1 | 4 |
| African fern-pine | <i>Afrocarpus falcatus</i> | 3 | - | 1 | 4 |
| Marina madrone | <i>Arbutus 'Marina'</i> | - | - | 1 | 1 |
| Incense cedar | <i>Calocedrus decurrens</i> | - | - | 1 | 1 |
| Blue blossom | <i>Ceanothus thyrsiflorus</i> | 1 | - | - | 1 |
| Deodar cedar | <i>Cedrus deodara</i> | - | - | 1 | 1 |
| Hackberry | <i>Celtis occidentalis</i> | 2 | - | - | 2 |
| New Zealand cabbage palm | <i>Cordyline australis</i> | 1 | - | - | 1 |
| Flowering dogwood | <i>Cornus florida</i> | - | - | 1 | 1 |
| Italian cypress | <i>Cupressus sempervirens</i> | - | 1 | 10 | 11 |
| Bronze loquat | <i>Eriobotrya deflexa</i> | 2 | 1 | - | 3 |
| Loquat | <i>Eriobotrya japonica</i> | - | - | 1 | 1 |
| Sugar gum | <i>Eucalyptus cladocalyx</i> | 3 | 1 | - | 4 |
| Blue gum | <i>Eucalyptus globulus</i> | 7 | 5 | - | 12 |
| Red ironbark | <i>Eucalyptus sideroxylon</i> | 5 | 1 | - | 6 |
| Ginkgo | <i>Ginkgo biloba</i> | - | 1 | - | 1 |
| Silk oak | <i>Grevillea robusta</i> | - | 1 | - | 1 |
| Toyon | <i>Heteromeles arbutifolia</i> | - | 1 | - | 1 |
| Jacaranda | <i>Jacaranda mimosifolia</i> | - | 1 | - | 1 |
| California black walnut | <i>Juglans hindsii</i> | 1 | - | - | 1 |
| Hollywood juniper | <i>Juniperus chinensis 'Kaizuka'</i> | - | 9 | 2 | 11 |
| Grecian laurel | <i>Laurus nobilis</i> | 3 | - | - | 3 |
| Glossy privet | <i>Ligustrum lucidum</i> | - | 1 | - | 1 |
| Sweetgum | <i>Liquidambar styraciflua</i> | - | 1 | 1 | 2 |

| Common Name | Scientific Name | Condition | | | Total |
|---------------------------|---------------------------------|------------------|---------------|------------------|------------|
| | | Poor (10-30%) | Fair (50%) | Good (70-90%) | |
| Crabapple | <i>Malus sylvestris</i> | 2 | 5 | 4 | 11 |
| Mayten | <i>Maytenus boaria</i> | 1 | - | - | 1 |
| Bottlebrush | <i>Melaleuca citrina</i> | - | - | 1 | 1 |
| Olive | <i>Olea europaea</i> | 1 | 7 | - | 8 |
| Sitka spruce | <i>Picea sitchensis</i> | - | - | 1 | 1 |
| Canary Island pine | <i>Pinus canariensis</i> | 1 | 1 | 10 | 12 |
| Aleppo pine | <i>Pinus halepensis</i> | 1 | - | - | 1 |
| Italian stone pine | <i>Pinus pinea</i> | - | 2 | - | 2 |
| Monterey pine | <i>Pinus radiata</i> | - | 5 | 1 | 6 |
| Victorian box | <i>Pittosporus undulatum</i> | 1 | 2 | - | 3 |
| Cherry | <i>Prunus avium</i> | 1 | - | - | 1 |
| Purpleleaf plum | <i>Prunus cerasifera</i> | 2 | - | - | 2 |
| Plum | <i>Prunus domestica</i> | 1 | 1 | - | 2 |
| Portugal laurel | <i>Prunus lusitanica</i> | 1 | - | - | 1 |
| Japanese flowering cherry | <i>Prunus serrulata</i> | - | 1 | - | 1 |
| Douglas fir | <i>Pseudotsuga menziesii</i> | 2 | 3 | 2 | 7 |
| Coast live oak | <i>Quercus agrifolia</i> | 25 | 40 | 14 | 79 |
| Blue oak | <i>Quercus douglasii</i> | 1 | 1 | - | 2 |
| Valley oak | <i>Quercus lobata</i> | 8 | 10 | 6 | 24 |
| African sumac | <i>Rhus lancea</i> | 3 | 1 | - | 4 |
| White willow | <i>Salix alba</i> | - | - | 1 | 1 |
| Arroyo willow | <i>Salix lasiolepis</i> | 1 | - | - | 1 |
| Brazilian pepper | <i>Schinus terebinthifolius</i> | - | 1 | - | 1 |
| Coast redwood | <i>Sequoia sempervirens</i> | 2 | 2 | 13 | 17 |
| Windmill palm | <i>Trachycarpus fortunei</i> | - | - | 1 | 1 |
| California bay | <i>Umbellularia californica</i> | 38 | 46 | 5 | 89 |
| Sawleaf zelkova | <i>Zelkova serrata</i> | 3 | 1 | - | 4 |
| Total | | 135 | 158 | 82 | 375 |

The most common species was California bay (89 trees, 24% of population). The bays were in fair (46 trees) to poor (38 trees) condition with five trees in good condition. They varied in development from young (4" trunk diameter) to mature (22, 12" trunk diameter). Twenty-eight (28) California bays had multiple trunks (31%). The single stem trees had an average trunk diameter of 9". The bays were generally growing in dense stands with oaks in undeveloped natural areas (Photo 1).

Seventy-nine (79) coast live oaks were assessed (21% of population). The coast live oaks were in fair condition (40 trees) with 25 trees in poor condition and 14 trees in good condition. They ranged from young (4" trunk diameter) to mature (26, 25, 17" trunk diameter). Thirteen (13) of the coast live oaks had multiple trunks (16%). The single stem trees had an average trunk diameter

of 15". Several of the oaks were declining in health. I have provided additional information on Sudden Oak Death which is somewhat of a concern in this area.

Twenty-four (24) valley oaks were assessed (6% of population). The valley oaks were in poor (8 trees) to good (6 trees) condition with 10 trees in fair condition. They ranged from relatively young (11" trunk diameter) to mature (37" trunk diameter) with an average trunk diameter of 22". Valley oaks were growing both in the natural areas and in the planted landscape. Some of the more important trees on the site were valley oaks. Valley oaks #30 and 72 were large trees in good condition growing on the eastern slope. Valley oak #206 was a mature tree in good health growing in the courtyard. Valley oak #350 was in decline and had broken two of the 6 cables installed (Photo 2). Tree #349 was a mature oak preserved in a 15x15' raised planter at the edge of a courtyard.

Seventeen (17) coast redwoods were assessed (5% of population). The redwoods were in good condition (13 trees) with two trees in fair condition and two trees in poor condition. The coast redwoods were predominantly young (average trunk diameter 11") and ranged from 4" to 40" in trunk diameter. The majority of the young redwoods still had staking which should be removed before it girdles the trees.

Twelve (12) Canary Island pines were assessed (3% of population). The pines were in good condition (10 trees) with one tree in fair condition and one in poor condition. They were mature with an average trunk diameter of 23". Most of the Canary Island pines were located just east of the road that cuts through the lower half of the property.

Twelve (12) blue gum eucalyptus trees were assessed (3% of population). The blue gums were in poor (7 trees) to fair (5 trees) condition with no trees in good condition. They were the largest trees assessed with an average trunk diameter of 44". Blue gum #62 was the largest tree assessed with a trunk diameter of 62". Blue gums #7-12 had been harshly topped with poorly attached regrowth (Photo 3).

Eleven (11) crab apples were assessed (3% of population). The crabapples were in good (4 trees) to poor (2 trees) condition with five trees in fair condition. Crabapples are typically small trees; an average trunk diameter of 10" is relatively mature for the species. Crabapple #203 was an iconic piece of the landscape.

Eleven (11) Hollywood junipers were assessed (3% of population). The junipers were in fair condition (9 trees) with two trees in good condition and no trees in poor condition. The junipers had their typical chaotic, bushy form. They were planted in a narrow location high above the walkway providing minimal benefits to the landscape (Photo 4).

Eleven (11) Italian cypresses were assessed (3% of population). The cypresses were in good condition (10 trees) with one tree in fair condition. They had the typical dense, narrow crown of their species.

The remaining 29% of trees included 48 species. Some particularly notable trees or groups of trees were:

- Douglas firs #147-153 had an 18" average trunk diameter and were growing on the southern edge of the property (Photo 5).
- Four sawleaf zelkovas were growing in the central courtyard and were declining in health.
- Sugar gums #309 and 310 were mature trees in decline with large trunk wounds.
- White willow #288 was a large mature single-stemmed tree in good condition growing in the courtyard.
- Bailey acacia seed production was impressive along the northern property boundary (Photo 6).

The Town of Los Gatos protects all trees 4" and larger on sites being developed (Municipal Code Section 29.10). Certain species of designated sizes are excepted per Section 29.10.0970. Based on this definition, 338 of the original 375 trees were protected. Some Protected trees of certain species and sizes are designated Large Protected. Protected trees cannot be removed or pruned more than 25% without a permit. Designations for individual trees are provided in the *Tree Assessment* (see *Exhibits*).



Photo 1 (upper left) – California bays and native oaks were the dominant species especially across the natural areas within the site.

Photo 2 (upper right) – Valley oak #250 was declining and had been over-pruned. Two of the six cables in the tree had broken.

Photo 3 (lower left) – Blue gums #7-12 had been topped with poorly attached regrowth.

Photo 4 (lower right) – The Hollywood junipers (#197 shown) were growing in raised planter beds next to covered sidewalks.





Photo 5 – Douglas firs #147 and 148 were growing near the southern boundary of the site.



Photo 6 – Bailey acacias #366-370 were growing near the northern boundary of the property and produced an extreme amount of seed.

Suitability for Preservation

Before evaluating the impacts that will occur during development, it is important to consider the quality of the tree resource itself, and the potential for individual trees to function well over an extended length of time. Trees that are preserved on development sites must be carefully selected to make sure that they may survive development impacts, adapt to a new environment and perform well in the landscape.

Our goal is to identify trees that have the potential for long-term health, structural stability and longevity. For trees growing in open fields, away from areas where people and property are present, structural defects and/or poor health presents a low risk of damage or injury if they fail. However, we must be concerned about safety in use areas. Therefore, where development encroaches into existing plantings, we must consider their structural stability as well as their potential to grow and thrive in a new environment. Where development will not occur, the normal life cycles of decline, structural failure and death should be allowed to continue.

Evaluation of suitability for preservation considers several factors:

- **Tree health**
Healthy, vigorous trees are better able to tolerate impacts such as root injury, demolition of existing structures, changes in soil grade and moisture, and soil compaction than are non-vigorous trees. For example, sawleaf zelkova #208 was declining and unlikely to survive regardless of construction impact.
- **Structural integrity**
Trees with significant amounts of wood decay and other structural defects that cannot be corrected are likely to fail. Such trees should not be preserved in areas where damage to people or property is likely. For example, Valley oak #350 had a large decaying cavity and had broken cables.
- **Species response**
There is a wide variation in the response of individual species to construction impacts and changes in the environment. For instance, coast live oaks are more tolerant of root pruning than valley oak.
- **Tree age and longevity**
Old trees, while having significant emotional and aesthetic appeal, have limited physiological capacity to adjust to an altered environment. Young trees are better able to generate new tissue and respond to change.
- **Species invasiveness**
Species that spread across a site and displace desired vegetation are not always appropriate for retention. This is particularly true when indigenous species are displaced. The California Invasive Plant Inventory Database <http://www.cal-ipc.org/plants/inventory/> lists species identified as being invasive. Los Gatos is part of the Central West Floristic Province. Blackwood acacia, New Zealand cabbage palm, blue gum, glossy privet, olive and purpleleaf plum are listed as limited invasiveness, and Brazilian pepper is listed as moderate invasiveness.

Each tree was rated for suitability for preservation based upon its age, health, structural condition and ability to safely coexist within a development environment (see **Tree Assessment** in Exhibits, and Table 2). We consider trees with high suitability for preservation to be the best candidates for preservation. We do not recommend retention of trees with low suitability for preservation in areas where people or property will be present. Retention of trees with moderate suitability for preservation depends upon the intensity of proposed site changes.

**Table 2. Tree suitability for preservation
Los Gatos Meadows, Los Gatos, CA**

| | |
|-----------------|--|
| High | These are trees with good health and structural stability that have the potential for longevity at the site. Fifty-three (53) trees had high suitability for preservation. |
| Moderate | Trees in this category have fair health and/or structural defects that may be abated with treatment. These trees require more intense management and monitoring, and may have shorter life-spans than those in the “high” category. Ninety-seven (97) trees had moderate suitability for preservation. |
| Low | Trees in this category are in poor health or have significant defects in structure that cannot be abated with treatment. These trees can be expected to decline regardless of management. The species or individual tree may possess either characteristics that are undesirable in landscape settings or be unsuited for use areas. Two hundred twenty-five (225) trees had low suitability for preservation. |

Evaluation of Impacts and Recommendations

In 2019, selected trees were removed in response to a Wildland Urban Interface fire management review and the resulting Tree Management Plan prepared by HortScience | Bartlett Consulting (3/27/19). This Arborist Report incorporates the data on trees removed, and responds to a Arborist’s Review letter prepared by Monarch Consulting Arborists (July 6, 2020). Forty-four (44) trees were removed and 331 trees remain.

The *Tree Assessment* was the reference point for tree health, condition, and suitability for preservation. I used the *Planning Submittal* set (10/8/20) created by Gates + Associates and the *Preliminary Grading and Drainage Plan* (6/30/20) created by Kimley-Horn to estimate impacts to trees. The plans show a nearly complete demolition of the site within between the two roads and additional grading outside of the roads in some areas.

The disposition of each tree is shown in **Tree Disposition** Exhibit. Based on my evaluation of the plans:

- Two hundred twelve (213) trees will be removed (205 Protected, 8 Large Protected).
- One hundred eighteen (118) trees will be preserved (109 Protected, 9 Large Protected)

The primary impacts of the proposed project to trees were expected to be from re-grading the slopes, reorienting and creating new roads, and re-configuring the buildings. Impacts to trees being preserved can be minimized by following the **Tree Preservation Guidelines** (below).

I estimate that 118 trees can be preserved because construction would not be occurring in their area, all of them around the perimeter of the site, and many of these on the east slope of the property downhill of the project area. Of all the trees recommended for preservation, approximately 37% have low suitability for preservation. I generally do not recommend preserving trees with low suitability for preservation in use areas. I consider the trees being preserved to be in non-use areas, but the occupancy rates may increase post construction. If current non-use areas change after development, I recommend carefully considering how future landscapes will be used before retaining trees with a low suitability for preservation. Impacts to trees being preserved can be minimized by following the **Tree Preservation Guidelines** (below).

Appraisal of Value

The Town of Los Gatos requires establishing the value of all assessed trees. To accomplish this, I used the standard methods found in *Guide for Plant Appraisal*, 9th edition (published in 2000 by the International Society of Arboriculture, Champaign IL). In addition, I referred to *Species Classification and Group Assignment* (2004), a publication of the Western Chapter of the International Society of Arboriculture. These two documents outline the methods employed in the tree appraisal.

In 2019, the ISA published a new (10th) edition of the *Guide for Plant Appraisal*, which revised the methods for estimating tree values using the reproduction cost and specifically the trunk formula technique. For the sake of consistency, I have not updated the estimated value of the trees in this report to the 10th edition. This report estimates values using the 9th edition, which was the most recently published at the time.

The value of landscape trees is based upon four factors: size, species, condition and location. Size is measured as trunk diameter, normally 54" above grade. The species factor considers the adaptability and appropriateness of the plant in the south bay area. The *Species Classification and Group Assignment* lists recommended species ratings and evaluations. Condition reflects the health and structural integrity of the individual, as noted in the **Tree Assessment**. Location considers the site, placement and contribution of the tree in its surrounding landscape.

The appraised value of the 375 trees assessed in this report is **\$991,050**. The appraised value of each tree is shown in the **Tree Appraisal** attachment. The appraised value of the:

- 44 trees already removed is **\$129,650**.
- 213 trees to be removed is **\$483,750**.
- 118 trees to be preserved is **\$377,650**.

Sudden Oak Death

Sudden Oak Death (SOD) is caused by *Phytophthora ramorum*, a fungal pathogen (actually a water mold) affecting oaks in the red oak group, including coast live oak. Valley oak, in the white oak group, is not affected.

The disease was first recognized in Santa Cruz and Marin counties in the mid 1990's. Research indicates it was likely introduced through the nursery industry and may have been in the environment for many years before it 'escaped' into the forest.

The disease requires water to grow and spread and has many host species that are not affected by the disease but play a critical role in its spread. The disease has been shown to move from plant to plant via wind-driven rain, water, plant material and human activities. The disease typically lands on the foliage of a susceptible plant and migrates with water movement onto the trunk. Trunk lesions and foliar dieback ensue, eventually girdling the trunk, but the tree may remain green for several months or even years before it suddenly turns brown (hence the name).

Bleeding cankers and dieback are not sufficient to make a positive SOD identification. Lab analysis of plant material is required before the suspected case can be confirmed. There are thousands of confirmed cases of SOD in Santa Clara County (mostly in the forested areas). I did not see any indications of SOD on any trees being preserved, but I consider this a relatively high likelihood of outbreak area. Several precautions are recommended to help limit the possibility of infection. A detailed list of susceptible and host species, management and monitoring guidelines and prophylactic treatments are provided on the California Oak Mortality Task Force website (<http://www.suddenoakdeath.org/>). Of particular concern in this situation is the combined effect of construction impact and SOD on mature oak trees.

Tree Preservation Guidelines

The goal of tree preservation is not merely tree survival during development but maintenance of tree health and beauty for many years. Trees retained on sites that are either subject to extensive injury during construction or are inadequately maintained become a liability rather than an asset. The response of individual trees will depend on the amount of excavation and grading, the care with which demolition is undertaken, and the construction methods. Coordinating any construction activity inside the **TREE PROTECTION ZONE** can minimize these impacts.

The following recommendations will help reduce impacts to trees from development and maintain and improve their health and vitality through the clearing, grading and construction phases. All tree protection measures to comply with Town of Los Gatos Municipal Code Sec.29.10.1005- Protection of Trees During Construction.

Tree Protection Zone

1. **A TREE PROTECTION ZONE** shall be identified for each tree to be preserved. The **TREE PROTECTION ZONE** for each tree shall be the dripline of the tree. In most cases, groups of trees can be protected collectively.
2. Fence all trees to be retained to completely enclose the **TREE PROTECTION ZONE** prior to demolition, grubbing or grading. Fences shall be 6 ft. chain link with 2-inch diameter galvanized iron posts driven into the ground to a depth of at least 2 feet at no more than 10-foot spacing, or equivalent as approved by the Town. Tree #75 shall be fenced at the edge of construction. Trees to remain in the sequences of #19-102 and 101-127 can be fenced along the western edge of their collective dripline. All other trees to remain can be protected by the perimeter fencing at their collective driplines at the limit of grading on the northern, eastern, and southern edges of the project.
3. Fences must be installed before demolition, grading or construction permits are issued and must remain in place until construction is complete. Contractor shall first obtain the approval of the Consulting Arborist on record prior to removing a tree protection fence.
4. No grading, excavation, construction or storage or dumping of materials shall occur within the **TREE PROTECTION ZONE**. Excavation within the dripline of tree #75 shall be approved by and monitored by the Consulting Arborist.
5. No underground services including utilities, sub-drains, water or sewer shall be placed in the **TREE PROTECTION ZONE**.
6. Warning sign. Each tree fence shall have prominently displayed an 8.5 x 11-inch sign stating: "Warning—Tree Protection Zone-this fence shall not be removed and is subject to penalty according to Town Code 29.10.1025".
7. The attachment of wires, signs or ropes to any protected tree is prohibited.

Design recommendations

1. Any changes to the plans affecting the trees should be reviewed by the consulting arborist with regard to tree impacts. These include, but are not limited to, site plans, improvement plans, utility and drainage plans, grading plans, landscape and irrigation plans, and demolition plans.
2. Plan for tree preservation by designing adequate space around trees to be preserved. This is the **TREE PROTECTION ZONE**: No grading, excavation, construction or storage of materials should occur within that zone. Route underground services including utilities, sub-drains, water or sewer around the **TREE PROTECTION ZONE**.
3. Consider the vertical clearance requirements near trees during design. Avoid designs that would require pruning more than 20% of a tree's canopy.

4. All plans affecting trees shall be reviewed by the Consulting Arborist with regard to tree impacts. These include, but are not limited to, demolition plans, grading plans, drainage plans, utility plans, and landscape and irrigation plans.
5. Irrigation systems must be designed so that no trenching severs roots larger than 1" in diameter will occur within the **TREE PROTECTION ZONE**.
6. **Tree Preservation Guidelines** prepared by the Consulting Arborist, which include specifications for tree protection during demolition and construction, should be included on all plans.
7. Any herbicides placed under paving materials must be safe for use around trees and labeled for that use.
8. Do not lime the subsoil within 50' of any tree. Lime is toxic to tree roots.
9. As trees withdraw water from the soil, expansive soils may shrink within the root area. Therefore, foundations, footings and pavements on expansive soils near trees should be designed to withstand differential displacement.
10. Ensure adequate but not excessive water is supplied to trees; in some cases occasional irrigation will be required. Avoid directing runoff toward trees.

Pre-demolition and pre-construction treatments and recommendations

1. The demolition and construction superintendents shall meet with the Consulting Arborist before beginning work to review all work procedures, access routes, storage areas, and tree protection measures.
2. Prior to the commencement of construction, install the fence at the dripline, or **TREE PROTECTION ZONE** around any tree and/or vegetation to be retained which could be affected by the construction and prohibit any storage of construction materials or other materials, equipment cleaning, or parking of vehicles within the **TREE PROTECTION ZONE**. The dripline shall not be altered in any way so as to increase the encroachment of the construction.
3. Branches extending into the work area that can remain following demolition shall be tied back and protected from damage.
4. Fences are to remain until all grading and construction is completed. Where demolition must occur close to trees, such as removing curb and pavement, install trunk protection devices such as winding silt sock wattling around trunks or stacking hay bales around tree trunks.
5. Prune trees to be preserved to clean the crown of dead branches 1" and larger in diameter, raise canopies as needed for construction activities.
 - a. All pruning shall be done by a State of California Licensed Tree Contractor (C61/D49). All pruning shall be done by Certified Arborist or Certified Tree Worker in accordance with the Best Management Practices for Pruning (International Society of Arboriculture, 2002) and adhere to the most recent editions of the American National Standard for Tree Care Operations (Z133.1) and Pruning (A300).
 - b. The Consulting Arborist will provide pruning specifications prior to site demolition.
 - c. Branches extending into the work area that can remain following demolition shall be tied back and protected from damage.
 - d. While in the tree the arborist shall perform an aerial inspection to identify any defects, weak branch and trunk attachments and decay not visible from the ground. Any additional work needed to mitigate defects shall be reported to the property owner.
6. Tree(s) to be removed that have branches extending into the canopy of tree(s) or located within the **TREE PROTECTION ZONE** of tree(s) to remain shall be removed by a Certified Arborist or Certified Tree Worker and not by the demolition contractor. The Certified Arborist or Certified Tree Worker shall remove the trees in a manner that causes no damage to the tree(s) and understory to remain. Stumps shall be ground below grade.

7. Trees to be removed shall be felled so as to fall away from **TREE PROTECTION ZONE** and avoid pulling and breaking of roots of trees to remain. If roots are entwined, the Consulting Arborist may require first severing the major woody root mass before extracting the trees, or grinding the stump below ground.
8. All down brush and trees shall be removed from the **TREE PROTECTION ZONE** either by hand, or with equipment sitting outside the **TREE PROTECTION ZONE**. Extraction shall occur by lifting the material out, not by skidding across the ground. Brush shall be chipped and spread beneath the trees within the **TREE PROTECTION ZONE**
9. Structures and underground features to be removed within the **TREE PROTECTION ZONE** shall use equipment that will minimize damage to trees above and below ground, and operate from outside the **TREE PROTECTION ZONE**. Tie back branches and wrap trunks with protective materials to protect from injury as directed by the Project arborist. The Project arborist shall be on-site during all operations within the **TREE PROTECTION ZONE** to monitor demolition activity.
10. All tree work shall comply with the Migratory Bird Treaty Act as well as California Fish and Wildlife code 3503-3513 to not disturb nesting birds. To the extent feasible tree pruning and removal should be scheduled outside of the breeding season. Breeding bird surveys should be conducted prior to tree work. Qualified biologists should be involved in establishing work buffers for active nests.

Recommendations for tree protection during construction

1. Any approved grading, construction, demolition or other work within the **TREE PROTECTION ZONE** should be monitored by the Consulting Arborist. The Consulting arborist shall serve as the project arborist for periodic monitoring of the project site and the health of those trees to be preserved. The project Consulting Arborist shall be present whenever activities occur which may pose a potential threat to the health of the trees to be preserved and shall document all site visits.
2. All contractors shall conduct operations in a manner that will prevent damage to trees to be preserved.
3. Tree protection devices are to remain until all site work has been completed within the work area. Fences or other protection devices may not be relocated or removed without permission of the Consulting Arborist.
4. Construction trailers, traffic and storage areas must remain outside **TREE PROTECTION ZONE** at all times.
5. Construction activities within the **TREE PROTECTION ZONE**, including but not limited to: excavation, grading, drainage and leveling within the dripline of the tree are prohibited, unless approved by the Director, per Sec.10.29.1005.
6. Any root pruning required for construction purposes shall receive the prior approval of and be supervised by the Project Arborist. Roots should be cut with a saw to provide a flat and smooth cut. Removal of roots larger than 2" in diameter should be avoided.
7. If roots 2" and greater in diameter are encountered during site work and must be cut to complete the construction, the Project Arborist must be consulted to evaluate effects on the health and stability of the tree and recommend treatment.
8. Any brush clearing required within the **TREE PROTECTION ZONE** shall be accomplished with hand-operated equipment.
9. All down brush and trees shall be removed from the **TREE PROTECTION ZONE** either by hand, or with equipment sitting outside the **TREE PROTECTION ZONE**. Extraction shall occur by lifting the material out, not by skidding across the ground.

10. Prior to grading or trenching, trees may require root pruning outside the **TREE PROTECTION ZONE**. Any root pruning required for construction purposes shall receive the prior approval of, and be supervised by, the Project Arborist.
11. Spoil from trench, footing, utility or other excavation shall not be placed within the **TREE PROTECTION ZONE**, neither temporarily nor permanently.
12. All grading within the dripline of trees shall be done using the smallest equipment possible. The equipment shall operate perpendicular to the tree and operate from outside the **TREE PROTECTION ZONE**. Any modifications must be approved and monitored by the Consulting Arborist.
13. All trees shall be irrigated on a schedule to be determined by the Consulting Arborist (every 3 to 6 weeks is typical). Each irrigation shall wet the soil within the **TREE PROTECTION ZONE** to a depth of 30”.
14. If injury should occur to any tree during construction, it should be evaluated as soon as possible by the Consulting Arborist so that appropriate treatments can be applied. The Director and Consulting Arborist shall be notified of any damage that occurs to a protected tree during construction so that proper treatment may be administered.
15. No excess soil, chemicals, debris, equipment or other materials shall be dumped or stored within the **TREE PROTECTION ZONE**. Disposal or depositing of oil, gasoline, chemicals or other harmful materials within the dripline of or in drainage channels, swales or areas that may lead to the dripline of a protected tree are prohibited.
16. Any additional tree pruning needed for clearance during construction must be performed by a Certified Arborist and not by construction personnel.
17. Trees that accumulate a sufficient quantity of dust on their leaves, limbs and trunk as judged by the Consulting Arborist shall be spray-washed at the direction of the Project Arborist.

Maintenance of impacted trees

Our procedures included assessing trees for observable defects in structure. This is not to say that trees without significant defects will not fail. Failure of apparently defect-free trees does occur, especially during storm events. Wind forces, for example, can exceed the strength of defect-free wood causing branches and trunks to break. Wind forces coupled with rain can saturate soils, reducing their ability to hold roots, and blow over defect-free trees. Although we cannot predict all failures, identifying those trees with observable defects is a critical component of enhancing public safety.

Furthermore, trees change over time. Our inspections represent the condition of the tree at the time of inspection. As trees age, the likelihood of failure of branches or entire trees increases. Annual tree inspections are recommended to identify changes to tree health and structure. In addition, trees should be inspected after storms of unusual severity to evaluate damage and structural changes. Initiating these inspections is the responsibility of the client and/or tree owner.

Preserved trees will experience a physical environment different from that pre-development. As a result, tree health and structural stability should be monitored. Occasional pruning, fertilization, mulch, pest management, replanting and irrigation may be required. In addition, provisions for monitoring both tree health and structural stability following construction must be made a priority.

If you have any questions about my observations or recommendations, please contact me.

HortScience | Bartlett Consulting



Ryan Gilpin, M.S.
Certified Arborist #WE-10268A



Pam Nagle
Consulting Arborist and Urban Forester
Certified Arborist #WE-9617A
ISA Tree Risk Assessment Qualified



Exhibits

Tree Assessment Plan

Tree Assessment

Tree Disposition

Tree Appraisal



Tree Assessment Plan

Los Gatos Meadows
110 Wood Road
Los Gatos, CA

Prepared for:
Covia
Walnut Creek, CA

July 2020 Update

No Scale

Notes:

Base map provided by:
Cal Vada Surveying, Inc.
Corona, CA
(Survey dated June 2018)
&
Sandis
Mountain View, CA
(Survey dated 2007)

Numbered tree locations are approximate.

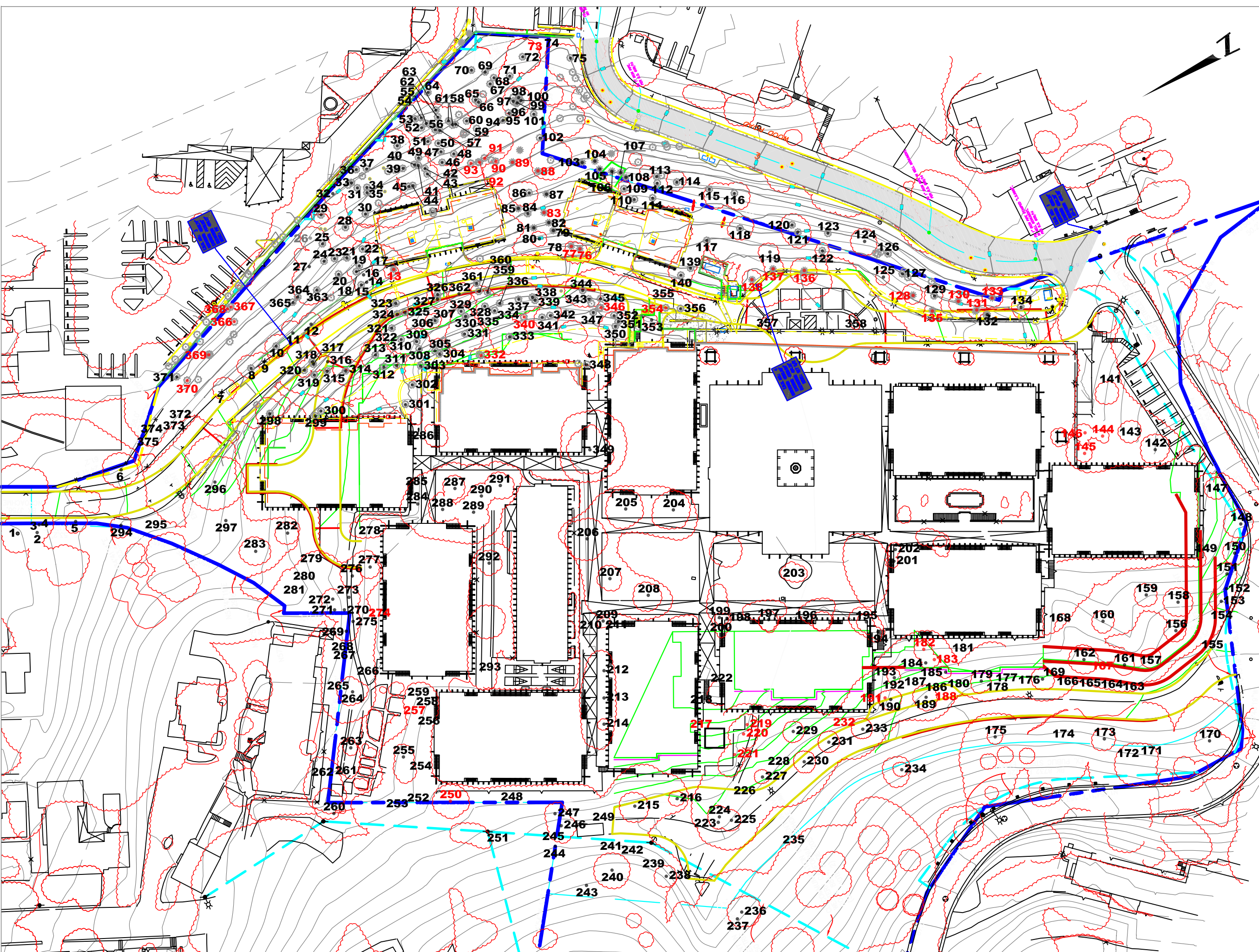
Trees less than 4" in diameter are not included in this assessment.

Remaining tree

Tree removed in 2019



325 Ray Street
Pleasanton, CA 94566
Phone 925.484.0211
www.hortscience.com



Tree Assessment

Los Gatos Meadows
Los Gatos, CA
July 2020 update



| Tree No. | Species | Trunk Diameter (in.) | Protected Status | Condition out of 100% | Suitability for Preservation | Comments |
|----------|--------------------|----------------------|------------------|-----------------------|------------------------------|--|
| 1 | Coast redwood | 40 | Protected | 50% | Moderate | Slight sweep in lower trunk; poor color; water stressed. |
| 2 | California bay | 8,8,7 | Protected | 50% | Low | Multiple trunks arise from base; bushy form; decay in stem; crown one sided west. |
| 3 | California bay | 6,5 | Protected | 30% | Low | Multiple trunks arise from base; bushy form; crown one sided east; covered in ivy. |
| 4 | Valley oak | 17 | Protected | 50% | Moderate | Leaning south; crown one sided west; covered in ivy and another vine. |
| 5 | Valley oak | 14 | Protected | 30% | Low | Poor form and structure; small crown; crown one sided south. |
| 6 | Coast live oak | 23 | Protected | 70% | High | Codominant trunks arise from 12 feet with seam; dense crown; pruning wound at 5 feet; trunk wound at 2 feet; both healed. |
| 7 | Blue gum | 40 | Protected | 30% | Low | Multiple trunks arise from 15 feet; topped at 20 feet; tall, narrow poorly attached regrowth; yellow jacket at base. |
| 8 | Blue gum | 38 | Protected | 30% | Low | Multiple trunks arise from 15 feet; topped at 20 feet; tall, narrow poorly attached regrowth. |
| 9 | Blue gum | 20,7 | Exception | 30% | Low | Multiple trunks arise from base; topped at 20 feet; tall, narrow poorly attached regrowth; old retaining wall at base; decay in base. |
| 10 | Blue gum | 54 | Protected | 30% | Low | Codominant trunks arise from 15 feet; topped at 20 feet; tall, narrow poorly attached regrowth; base at old retaining wall. |
| 11 | Blue gum | 28 | Protected | 30% | Low | Codominant trunks arise from 20 feet with dead main stem decaying into attachment; topped at 20 feet; tall, narrow poorly attached regrowth; base at old retaining wall. |
| 12 | Blue gum | 39 | Protected | 30% | Low | Codominant trunks arise from 15 feet; topped at 20 feet; tall, narrow poorly attached regrowth; base at old retaining wall; curb bumps out around base. |
| 13 | Canary Island pine | 21 | Protected | 70% | High | Strong central leader; crown one sided east; minor dieback. |

Tree Assessment

Los Gatos Meadows
Los Gatos, CA
July 2020 update



| Tree No. | Species | Trunk Diameter (in.) | Protected Status | Condition out of 100% | Suitability for Preservation | Comments |
|----------|--------------------|----------------------|------------------|-----------------------|------------------------------|---|
| 14 | Coast live oak | 15 | Protected | 50% | Low | Crook in trunk at 3 feet; crown one sided south; dense crown; supporting retaining wall. |
| 15 | California bay | 10 | Protected | 50% | Moderate | Lower trunk sweeps east; holding up retaining wall; minor dieback. |
| 16 | California bay | 10 | Protected | 50% | Moderate | Narrow upright form; sinuous trunk; interior tree. |
| 17 | California bay | 9,9 | Protected | 30% | Low | Codominant trunks arise from base with decay running up inside of trunks; narrow upright form; small crown. |
| 18 | California bay | 5 | Protected | 10% | Low | Main stem dead. |
| 19 | California bay | 13,8 | Protected | 50% | Moderate | Codominant trunks arise from 3 feet; one stem bowed east; larger stem upright, narrow form. |
| 20 | California bay | 11 | Protected | 30% | Low | Codom in upper crown; thin crown; narrow form. |
| 21 | California bay | 13 | Protected | 30% | Low | Multiple trunks arise in upper crown; poor form and structure; dense chaotic crown. |
| 22 | California buckeye | 9 | Protected | 50% | Moderate | Leans heavily east; suppressed by neighboring trees. |
| 23 | California bay | 7 | Protected | 30% | Low | Main stem bowed heavily east with vertical epicormic stems. |
| 24 | California bay | 17,16 | Protected | 70% | High | Codominant trunks arise from base; wide spreading crown; dominant tree. |
| 25 | California bay | 11 | Protected | 30% | Low | Narrow form; sinuous trunk; cavity in base. |
| 26 | California bay | 12 | Protected | 50% | Low | Leaning heavily east; codominant trunks arise from 10 feet; small dense crown. |
| 27 | California bay | 7 | Protected | 10% | Low | Leaning east, closer to horizontal than vertical; epicormic sprouts. |
| 28 | California bay | 8 | Protected | 10% | Low | Main stem totally hollow. |
| 29 | California bay | 12,7,6 | Protected | 10% | Low | Stump sprout; can see through base. |
| 30 | Valley oak | 34 | Large Protected | 70% | High | Codominant trunks arise from 25 feet; minor dieback; dominant tree; crown above building. |
| 31 | California bay | 16 | Protected | 50% | Low | Leaning east; narrow upright form cabled wrapped around tree; 8 inch trunk wound on south side. |

Tree Assessment

Los Gatos Meadows
Los Gatos, CA
July 2020 update



| Tree No. | Species | Trunk Diameter (in.) | Protected Status | Condition out of 100% | Suitability for Preservation | Comments |
|----------|----------------|----------------------|------------------|-----------------------|------------------------------|---|
| 32 | California bay | 8 | Protected | 50% | Low | Leaning east; narrow upright form; edge tree. |
| 33 | California bay | 14,6 | Protected | 50% | Low | Codominant trunks arise from 3 feet; leaning east; wrapped around coast live oak. |
| 34 | California bay | 8 | Protected | 30% | Low | Bowed heavily east; epicormic growing vertically. |
| 35 | California bay | 11,10,7 | Protected | 50% | Low | Multiple trunks arise from base; sinuous trunks; minor dieback. |
| 36 | Coast live oak | 19 | Protected | 50% | Moderate | Codominant trunks arise from 10 feet; dense crown one sided east; edge tree. |
| 37 | California bay | 10 | Protected | 30% | Low | Leaning heavily east; topped; dense epicormic growth. |
| 38 | Blue oak | 19 | Protected | 30% | Low | Sinuous trunk; low live crown ratio; thin, small crown; bark peeling off base. |
| 39 | Coast live oak | 27 | Large Protected | 50% | Low | Codominant trunks arise from 20 feet; leaning east; swollen, bleeding base. |
| 40 | Valley oak | 17 | Protected | 30% | Low | Codominant trunks arise from 15 feet with dead stem; other stem bowed over other trees, difficult to see. |
| 41 | California bay | 8,5,4 | Protected | 50% | Moderate | Multiple trunks arise from base; bushy, interior tree. |
| 42 | California bay | 5 | Protected | 50% | Low | Young interior tree searching for light. |
| 43 | Valley oak | 14 | Protected | 50% | Moderate | Multiple trunks arise from 30 feet; difficult to see crown above other canopy. |
| 44 | Coast live oak | 22 | Protected | 50% | Low | Lost codominant trunks arise from 5 feet decaying into trunk; dense wide spreading crown. |
| 45 | California bay | 6,5 | Protected | 50% | Low | Bushy interior tree. |
| 46 | California bay | 6 | Protected | 50% | Low | Young interior tree searching for light. |
| 47 | Valley oak | 17,13 | Protected | 50% | Moderate | Codominant trunks arise from 2 feet; trunks bow away from each other; wide spreading crown, difficult to see. |
| 48 | California bay | 22,12 | Protected | 10% | Low | Dead stump resprouting. |
| 49 | California bay | 7 | Protected | 50% | Low | Young interior tree searching for light; swollen base. |
| 50 | California bay | 7 | Protected | 50% | Low | Young interior tree searching for light; swollen base. |

Tree Assessment

Los Gatos Meadows
Los Gatos, CA
July 2020 update



| Tree No. | Species | Trunk Diameter (in.) | Protected Status | Condition out of 100% | Suitability for Preservation | Comments |
|----------|----------------|----------------------|------------------|-----------------------|------------------------------|--|
| 51 | California bay | 7 | Protected | 30% | Low | Bowed horizontal to east; epicormic growing vertical. |
| 52 | California bay | 9 | Protected | 30% | Low | Bowed horizontal to east; epicormic growing vertical; topped at property line. |
| 53 | California bay | 10 | Protected | 50% | Low | Narrow upright form; cavities at base; edge tree. |
| 54 | California bay | 13,9 | Protected | 50% | Low | Codominant trunks arise from 3 feet; swollen base; leaning east; headed at property line. |
| 55 | California bay | 6,5,5,4 | Protected | 50% | Low | Bushy interior tree bowed to east. |
| 56 | California bay | 7 | Protected | 30% | Low | Bowed horizontal to east; epicormic growing vertical; topped at property line. |
| 57 | California bay | 9,8 | Protected | 30% | Low | Codominant trunks arise from base; sinuous trunks; interior tree. |
| 58 | California bay | 12 | Protected | 30% | Low | Cavities in base; bowed horizontal east; vertical epicormic sprouting. |
| 59 | Coast live oak | 27,16 | Large Protected | 50% | Moderate | Codominant trunks arise from base; all stems bowed east; dense chaotic crown; base at 2 bay trees. |
| 60 | California bay | 14 | Protected | 10% | Low | Cavities in base; broken top with epicormic resprouting. |
| 61 | California bay | 15 | Protected | 30% | Low | Bowed to east; epicormic growing vertical. |
| 62 | California bay | 13 | Protected | 30% | Low | Bowed to east; epicormic growing vertical; headed at property line. |
| 63 | California bay | 6 | Protected | 50% | Low | Young interior tree searching for light. |
| 64 | California bay | 10,9 | Protected | 50% | Low | Codominant trunks arise from base; trunk sweeping east; edge tree; headed at property line. |
| 65 | California bay | 9 | Protected | 30% | Low | Bowed horizontally to east; epicormic growing vertical. |
| 66 | California bay | 11 | Protected | 30% | Low | Multiple trunks arise from 20 feet where it perfectly props coast live oak stem. |
| 67 | Olive | 5,4,3,2 | Exception | 30% | Low | Multiple trunks arise from base; volunteer; thin crown; interior tree. |
| 68 | California bay | 6 | Protected | 50% | Low | Young interior tree searching for light. |

Tree Assessment

Los Gatos Meadows
Los Gatos, CA
July 2020 update



| Tree No. | Species | Trunk Diameter (in.) | Protected Status | Condition out of 100% | Suitability for Preservation | Comments |
|----------|----------------|----------------------|------------------|-----------------------|------------------------------|--|
| 69 | California bay | 7 | Protected | 30% | Low | Narrow form; thin crown; dieback. |
| 70 | Coast live oak | 6 | Protected | 50% | Moderate | Codominant trunks arise from 7 feet; dense crown, one sided east. |
| 71 | California bay | 17,8 | Protected | 50% | Moderate | Codominant trunks arise from base; swollen base; dense chaotic crown. |
| 72 | Valley oak | 33 | Large Protected | 70% | High | Dominant tree; codominant trunks arise from 6 feet with seam; wide spreading crown. |
| 73 | Olive | 5 | Exception | 50% | Moderate | Multiple trunks arise from 7 feet; narrow crown. |
| 74 | Coast live oak | 6 | Protected | 50% | Moderate | Codominant trunks arise from 7 feet; dense crown, one sided south. |
| 75 | Coast live oak | 30 | Large Protected | 50% | Moderate | Multiple trunks arise from 7 feet crown one sided south; dense crown; minor dieback. |
| 76 | Monterey pine | 15 | Protected | 50% | Low | Sinuous trunk; thin crown; gray blue color. |
| 77 | Monterey pine | 17 | Protected | 50% | Low | Sinuous trunk; thin crown; gray blue color. |
| 78 | Coast redwood | 7 | Protected | 90% | High | Good young tree; remove staking. |
| 79 | Coast redwood | 13 | Protected | 90% | High | Good form and structure; dense crown. |
| 80 | Blue oak | 12 | Protected | 50% | Moderate | Multiple trunks arise from 10 feet; thin crown; upright form. |
| 81 | Coast redwood | 5 | Protected | 90% | High | Good young tree; remove staking. |
| 82 | Coast redwood | 7 | Protected | 30% | Low | Dead top. |
| 83 | Monterey pine | 14 | Protected | 50% | Low | Sinuous trunk; thin crown; gray blue color. |
| 84 | Bigleaf maple | 9 | Protected | 30% | Low | 2 foot basal wound with decay; good form and structure; dense crown. |
| 85 | Coast redwood | 7 | Protected | 90% | High | Good young tree; remove staking. |
| 86 | Valley oak | 19 | Protected | 70% | Moderate | Dominant tree; codominant trunks arise from 15 feet; crown one sided east. |
| 87 | Coast redwood | 10 | Protected | 90% | High | Good form and structure; dense crown. |
| 88 | Monterey pine | 8 | Protected | 50% | Low | Sinuous trunk; leaning south; thin crown; gray blue color. |

Tree Assessment

Los Gatos Meadows
Los Gatos, CA
July 2020 update



| Tree No. | Species | Trunk Diameter (in.) | Protected Status | Condition out of 100% | Suitability for Preservation | Comments |
|----------|------------------|----------------------|------------------|-----------------------|------------------------------|---|
| 89 | Monterey pine | 8 | Protected | 50% | Moderate | Strong central leader; crown one sided south; thin crown. |
| 90 | Blackwood acacia | 10,6 | Exception | 30% | Low | Poor form and structure; invasive. |
| 91 | Blackwood acacia | 5 | Exception | 30% | Low | Poor form and structure; invasive. |
| 92 | Blackwood acacia | 8,7,4 | Exception | 30% | Low | Poor form and structure; invasive. |
| 93 | Blackwood acacia | 5,5,5,4 | Exception | 30% | Low | Poor form and structure; invasive. |
| 94 | California bay | 10 | Protected | 30% | Low | Huge basal cavity; lost half of tree. |
| 95 | California bay | 16 | Protected | 30% | Low | Lost top; epicormic resprouting; dieback. |
| 96 | California bay | 5 | Protected | 10% | Low | Base decayed and failed; leaning on neighboring tree. |
| 97 | California bay | 10,6,5,4,4 | Protected | 50% | Low | Multiple trunks arise from base; base at valley oak; bushy, wrapping around valley oak. |
| 98 | Valley oak | 17,16 | Protected | 50% | Moderate | Codominant trunks arise from base; surrounded by bays; crown one sided south; dieback throughout crown. |
| 99 | California bay | 7,6,6,5 | Protected | 50% | Low | Multiple trunks arise from base; base at valley oak; bushy, wrapping around valley oak. |
| 100 | California bay | 6 | Protected | 50% | Low | Base at valley oak; bushy, wrapping around valley oak. |
| 101 | California bay | 5 | Protected | 70% | High | Good young tree. |
| 102 | California bay | 5,5,5,4,4,3,3,2,2 | Protected | 70% | Moderate | Multiple trunks arise from base; short wide spreading bushy form. |
| 103 | Coast redwood | 9 | Protected | 50% | Moderate | Lost top; remove staking. |
| 104 | Coast redwood | 8 | Protected | 90% | High | Good young tree. |
| 105 | Coast redwood | 9 | Protected | 90% | High | Good young tree. |
| 106 | Coast redwood | 10 | Protected | 90% | High | Good young tree. |
| 107 | Coast redwood | 8 | Protected | 90% | High | Good young tree. |
| 108 | Coast redwood | 4 | Protected | 90% | High | Good young tree; remove staking. |
| 109 | Grecian laurel | 10,9,9 | Protected | 30% | Low | Multiple trunks arise from base; upright form; thin crown; previously topped. |

Tree Assessment

Los Gatos Meadows
Los Gatos, CA
July 2020 update



| Tree No. | Species | Trunk Diameter (in.) | Protected Status | Condition out of 100% | Suitability for Preservation | Comments |
|----------|----------------|----------------------|------------------|-----------------------|------------------------------|---|
| 110 | Grecian laurel | 6,6,5,5,4,3,3,2 | Protected | 30% | Low | Multiple trunks arise from base; upright form; thin crown; previously topped. |
| 111 | Grecian laurel | 5,4,4,4,4,4,3,3,3 | Protected | 30% | Low | Multiple trunks arise from base; upright form; thin crown; previously topped. |
| 112 | Olive | 6 | Exception | 50% | Moderate | Sinuous trunk; small crown; interior tree; healing trunk wound. |
| 113 | Olive | 12,7 | Exception | 50% | Moderate | Codominant trunks arise from base; sinuous trunk; dieback; interior tree; healing trunk wound. |
| 114 | Olive | 10,6,5,4,3,2,2,2 | Exception | 50% | Moderate | Multiple trunks arise from base; sinuous trunk; dieback; interior tree. |
| 115 | Valley oak | 21 | Protected | 50% | Low | Multiple trunks arise from 12 feet; chaotic form; thin crown; weeping. |
| 116 | Blue gum | 47,32,17 | Large Protected | 50% | Low | Multiple trunks arise from 2 feet; dominant tree; history of branch failure; growing on slope; previously topped. |
| 117 | Bronze loquat | 6 | Protected | 30% | Low | Multiple trunks arise from 5 feet; half of crown dead. |
| 118 | Coast live oak | 19,15 | Protected | 70% | High | Codominant trunks arise from base; dense crown; growing on slope. |
| 119 | Coast live oak | 19 | Protected | 70% | High | Multiple trunks arise from 12 feet with seam; crown bowed south; dense crown. |
| 120 | Valley oak | 14 | Protected | 50% | Moderate | Crook in trunk at 5 feet; crown one sided east. |
| 121 | Valley oak | 19 | Protected | 50% | Low | Dominant tree; dieback to 5 inches; declining. |
| 122 | Coast live oak | 11 | Protected | 50% | Moderate | Multiple trunks arise from 12 feet with wide attachment; chaotic form. |
| 123 | Olive | 7,7,5,4,4,3 | Exception | 50% | Moderate | Multiple trunks arise from 1 foot; dense crown; 3 foot long trunk wound. |
| 124 | Coast live oak | 25 | Large Protected | 10% | Low | Mostly dead. |
| 125 | Coast redwood | 19 | Protected | 10% | Low | Mostly dead. |

Tree Assessment

Los Gatos Meadows
Los Gatos, CA
July 2020 update



| Tree No. | Species | Trunk Diameter (in.) | Protected Status | Condition out of 100% | Suitability for Preservation | Comments |
|----------|--------------------|----------------------|------------------|-----------------------|------------------------------|--|
| 126 | Coast live oak | 7,7 | Protected | 10% | Low | Mostly dead. |
| 127 | Coast live oak | 8 | Protected | 10% | Low | Mostly dead. |
| 128 | Canary Island pine | 28 | Protected | 70% | Moderate | Strong central leader; heavy sap flow; difficult to see top. |
| 129 | Coast live oak | 15 | Protected | 50% | Low | Codominant trunks arise from 10 feet with seam; bowed south, on slope. |
| 130 | Canary Island pine | 23 | Protected | 70% | High | Strong central leader; difficult to see top. |
| 131 | Canary Island pine | 26 | Protected | 30% | Low | Sinuous trunk difficult to see top. |
| 132 | Coast redwood | 7 | Protected | 90% | Moderate | Good young tree; growing into pines crown. |
| 133 | Canary Island pine | 22 | Protected | 70% | High | Good form and structure; dense crown; difficult to see top. |
| 134 | Coast live oak | 18 | Protected | 70% | Moderate | Multiple trunks arise from 12 feet; dense crown; minor dieback. |
| 135 | Canary Island pine | 22 | Protected | 70% | Moderate | Codominant trunks arise in upper crown; dense crown; difficult to see top. |
| 136 | Canary Island pine | 23 | Protected | 70% | High | Good form and structure; dense crown; difficult to see top; base 4 inches from curb. |
| 137 | Canary Island pine | 21 | Protected | 70% | High | Good form and structure; dense crown; difficult to see top. |
| 138 | Canary Island pine | 21 | Protected | 70% | High | Good form and structure; dense crown; difficult to see top; prune drooping branch. |
| 139 | Bronze loquat | 5,3,3,3 | Protected | 50% | Moderate | Multiple trunks arise from 2 feet; growing in dense bushes. |
| 140 | Bronze loquat | 6,4,2 | Protected | 30% | Low | Multiple trunks arise from 3 feet; declining |
| 141 | Crabapple | 8 | Exception | 70% | High | Multiple trunks arise from 5 feet; wide spreading crown. |
| 142 | Coast live oak | 18 | Protected | 70% | High | Multiple trunks arise from 8 feet; wide spreading crown; base covered in ivy. |
| 143 | Coast live oak | 16 | Protected | 70% | High | Codominant trunks arise from 12 feet; wide spreading crown; base covered in ivy. |
| 144 | Canary Island pine | 18 | Protected | 50% | Moderate | Lost top; dense crown; base in ivy. |
| 145 | Canary Island pine | 22 | Protected | 70% | High | Good form and structure; dense crown; base in ivy. |

Tree Assessment

Los Gatos Meadows
Los Gatos, CA
July 2020 update



| Tree No. | Species | Trunk Diameter (in.) | Protected Status | Condition out of 100% | Suitability for Preservation | Comments |
|----------|--------------------|----------------------|------------------|-----------------------|------------------------------|---|
| 146 | Canary Island pine | 26 | Protected | 70% | Moderate | Codominant trunks arise in upper crown; dense crown; base in ivy. |
| 147 | Douglas fir | 18 | Protected | 70% | Moderate | Good form and structure; minor dieback; epicormic growth. |
| 148 | Douglas fir | 29 | Protected | 70% | Moderate | Good form and structure; dominant tree; root collar buried. |
| 149 | Hollywood juniper | 9,5 | Protected | 70% | High | Codominant trunks arise from 3 feet; low branching dorm; dense crown. |
| 150 | Douglas fir | 15 | Protected | 50% | Moderate | Good form and structure; minor dieback; thin crown. |
| 151 | Douglas fir | 15 | Protected | 30% | Low | Multiple trunks arise from 10 feet where lost top; narrow form; dense crown. |
| 152 | Douglas fir | 18 | Protected | 50% | Low | Good form and structure; minor dieback; lost top. |
| 153 | Douglas fir | 14 | Protected | 50% | Moderate | Good form and structure; minor dieback; thin crown. |
| 154 | Valley oak | 11 | Protected | 70% | High | Codominant trunks arise from 7 feet with seam; crown one sided south. |
| 155 | Silk oak | 11 | Protected | 50% | Low | Multiple trunks arise from 25 feet; dense crown. |
| 156 | Coast live oak | 17 | Protected | 70% | High | Multiple trunks arise from 10 feet; dense crown; buried root collar. |
| 157 | Coast live oak | 15 | Protected | 30% | Low | Multiple trunks arise from 8 feet with seam; very non circular trunk; extensive dieback throughout crown. |
| 158 | Douglas fir | 22 | Protected | 30% | Low | Topped at 25 feet; extensive surface roots. |
| 159 | Coast live oak | 21 | Protected | 50% | Moderate | Codominant trunks arise from 8 feet; hose embedded in trunk at 6 feet; crown one sided west. |
| 160 | Valley oak | 21 | Protected | 50% | Moderate | Trunk bows east; minor dieback. |
| 161 | Valley oak | 16 | Protected | 30% | Low | Trunk bows horizontal to north; vertical branch becomes main stem; dieback throughout crown. |
| 162 | Coast live oak | 20 | Protected | 50% | Moderate | Leaning west; dense crown. |
| 163 | Italian cypress | 5 | Protected | 90% | High | Typical upright form; planted at edge of retaining wall. |
| 164 | Italian cypress | 6 | Protected | 90% | High | Typical upright form; planted at edge of retaining wall. |

Tree Assessment

Los Gatos Meadows
Los Gatos, CA
July 2020 update



| Tree No. | Species | Trunk Diameter (in.) | Protected Status | Condition out of 100% | Suitability for Preservation | Comments |
|----------|--------------------|----------------------|------------------|-----------------------|------------------------------|---|
| 165 | Italian cypress | 6 | Protected | 90% | High | Typical upright form; planted at edge of retaining wall. |
| 166 | Italian cypress | 5 | Protected | 90% | High | Typical upright form; planted at edge of retaining wall. |
| 167 | Monterey pine | 4 | Protected | 90% | High | Good young tree. |
| 168 | Red horsechestnut | 5,2 | Protected | 90% | High | Good young tree; prune codominant. |
| 169 | Coast live oak | 7 | Protected | 50% | Low | Codominant trunks arise from 6 feet; crown one sided west over parking; dieback. |
| 170 | California bay | 17,10,6 | Protected | 30% | Low | Multiple trunks arise from base; base totally hollow; wide spreading crown. |
| 171 | California bay | 7,7,7,6,5,5,5,5 | Protected | 30% | Low | Stump sprout; decaying base. |
| 172 | California bay | 8,5,5,4 | Protected | 30% | Low | Stump sprout; decaying base. |
| 173 | California bay | 16 | Protected | 50% | Moderate | Upright form; thin crown; dieback. |
| 174 | Coast live oak | 8 | Protected | 70% | Moderate | Codominant trunks arise from 15 feet; dense crown one sided east. |
| 175 | Coast live oak | 15 | Protected | 30% | Low | Multiple trunks arise from 12 feet with bleeding seam; poor form and structure; dense crown one sided east. |
| 176 | Sugar gum | 17,16 | Protected | 50% | Moderate | Codominant trunks arise from base; sinuous trunk; dense crown. |
| 177 | Sugar gum | 12,11,11,11,1 | Protected | 30% | Low | Stump sprout; decaying base; long levers arms. |
| 178 | Deodar cedar | 6 | Protected | 90% | High | Good young tree. |
| 179 | Coast live oak | 14 | Protected | 50% | Moderate | Codominant trunks arise from 10 feet; dense crown; dieback throughout crown. |
| 180 | Italian cypress | 5 | Protected | 90% | High | Typical upright form. |
| 181 | Sitka spruce | 6 | Protected | 70% | High | Dense narrow weeping form; large surface roots. |
| 182 | Italian stone pine | 22 | Protected | 50% | Moderate | Codominant trunks arise from 12 feet; crown one sided east over building; weeping. |
| 183 | Italian stone pine | 19 | Protected | 50% | Moderate | Crown one sided east over building; weeping. |

Tree Assessment

Los Gatos Meadows
Los Gatos, CA
July 2020 update



| Tree No. | Species | Trunk Diameter (in.) | Protected Status | Condition out of 100% | Suitability for Preservation | Comments |
|----------|-------------------|----------------------|------------------|-----------------------|------------------------------|---|
| 184 | Red ironbark | 13 | Exception | 10% | Low | Mostly dead. |
| 185 | Incense cedar | 11 | Protected | 90% | High | Good form and structure; dense crown. |
| 186 | Italian cypress | 5 | Protected | 50% | Moderate | Typical upright form; grown around tie. |
| 187 | Italian cypress | 5 | Protected | 90% | High | Typical upright form. |
| 188 | Blackwood acacia | 4 | Exception | 70% | Low | Young invasive volunteer. |
| 189 | Coast live oak | 19 | Protected | 50% | Moderate | Multiple trunks arise from 15 with awkward branching angles; dense flat topped crown. |
| 190 | Red ironbark | 13 | Exception | 10% | Low | Mostly dead. |
| 191 | Blackwood acacia | 17 | Exception | 50% | Low | Sinuous trunk; dense crown one sided north over building; invasive. |
| 192 | Red ironbark | 14 | Exception | 10% | Low | Mostly dead. |
| 193 | Hollywood juniper | 17 | Protected | 70% | High | Typical chaotic form; dense crown. |
| 194 | Hollywood juniper | 5,5,4,3,3,3 | Protected | 50% | Low | Typical chaotic form; dense crown; decay at base. |
| 195 | Hollywood juniper | 11,7 | Protected | 50% | Low | Typical chaotic form; dense crown; base 1 foot from building; crown one sided east. |
| 196 | Blue blossom | 5,4,4 | Protected | 30% | Low | Multiple trunks arise from 1 foot with trunk wound; topped harshly. |
| 197 | Hollywood juniper | 18 | Protected | 50% | Low | Typical chaotic form; dense crown; base 1 foot from building; crown one sided east. |
| 198 | Hollywood juniper | 13 | Protected | 50% | Low | Typical chaotic form; dense crown; base 3 foot from building; crown one sided east. |
| 199 | Hollywood juniper | 11 | Protected | 50% | Low | Typical chaotic form; dense crown; base 6 foot from building; crown one sided south. |
| 200 | Hollywood juniper | 10 | Protected | 50% | Low | Typical chaotic form; dense crown; base 2 foot from building; crown one sided north. |
| 201 | Hollywood juniper | 12 | Protected | 50% | Low | Typical chaotic form; dense crown; base 2 foot from building; crown one sided north. |

Tree Assessment

Los Gatos Meadows
Los Gatos, CA
July 2020 update



| Tree No. | Species | Trunk Diameter (in.) | Protected Status | Condition out of 100% | Suitability for Preservation | Comments |
|----------|-------------------|----------------------|------------------|-----------------------|------------------------------|---|
| 202 | Hollywood juniper | 13 | Protected | 50% | Low | Typical chaotic form; dense crown; base 1 foot from building; crown one sided east. |
| 203 | Crabapple | 4,3 | Exception | 70% | High | Good young tree, iconic part of landscape. |
| 204 | Sawleaf zelkova | 23 | Protected | 50% | Moderate | Multiple trunks arise from 7 feet with narrow attachment; wide spreading crown; northern half of tree declining; dieback. |
| 205 | Sawleaf zelkova | 22 | Protected | 30% | Low | Multiple trunks arise from 7 feet with narrow attachment; wide spreading crown; tree declining; dieback. |
| 206 | Valley oak | 24 | Large Protected | 70% | Moderate | Codominant trunks arise from 10 feet; growing in small space; vase shaped crown; minor dieback. |
| 207 | Sawleaf zelkova | 19 | Protected | 30% | Low | Multiple trunks arise from 7 feet with narrow attachment; wide spreading crown; tree declining; dieback. |
| 208 | Sawleaf zelkova | 18 | Protected | 30% | Low | Multiple trunks arise from 7 feet with narrow attachment; wide spreading crown; tree declining; dieback. |
| 209 | Mayten | 7 | Protected | 30% | Low | Codominant trunks arise from 6 feet; thin crown; yellow foliage; declining. |
| 210 | Italian cypress | 14 | Protected | 70% | Moderate | Typical upright form. |
| 211 | Italian cypress | 14 | Protected | 70% | Low | Typical upright form; growing into buildings eave. |
| 212 | Crabapple | 12 | Exception | 50% | Moderate | Multiple trunks arise from 6 feet; crown one sided north. |
| 213 | Crabapple | 11 | Exception | 50% | Moderate | Multiple trunks arise from 6 feet; crown one sided north. |
| 214 | Crabapple | 11 | Exception | 30% | Low | Multiple trunks arise from 6 feet with cavity; crown one sided north. |
| 215 | Coast live oak | 22,22 | Protected | 50% | Low | Codominant trunks arise from 2 feet with seam; dense wide spreading crown; 2 cables in tree; significant growth around equipment. |
| 216 | California bay | 10 | Protected | 50% | Moderate | Codominant trunks arise from 6 feet; dense crown; upright form. |

Tree Assessment

Los Gatos Meadows
Los Gatos, CA
July 2020 update



| Tree No. | Species | Trunk Diameter (in.) | Protected Status | Condition out of 100% | Suitability for Preservation | Comments |
|----------|-------------------|----------------------|------------------|-----------------------|------------------------------|--|
| 217 | Brazilian pepper | 5 | Protected | 50% | Low | Multiple trunks arise from 6 feet; bushy form; topped at 15 feet; base at deck. |
| 218 | Loquat | 6 | Protected | 70% | Moderate | Narrow form; base 1 foot from retaining wall; dense crown. |
| 219 | Blue gum | 36 | Protected | 50% | Moderate | Narrow form dense bushy growth; difficult to see upper crown. |
| 220 | Blue gum | 62 | Large Protected | 50% | Moderate | Dense bushy growth; difficult to see upper crown. |
| 221 | Blue gum | 36 | Protected | 50% | Moderate | Narrow form dense bushy growth; difficult to see upper crown; minor dieback. |
| 222 | African fern-pine | 5 | Protected | 70% | Moderate | Good young tree; in narrow planting location. |
| 223 | California bay | 13 | Protected | 50% | Moderate | Codominant trunks arise from 20 feet; dense crown; upright form; hole at base. |
| 224 | California bay | 13,13 | Protected | 50% | Moderate | Codominant trunks arise from 2 feet; dense crown; upright form. |
| 225 | Coast live oak | 20 | Protected | 70% | Moderate | Multiple trunks arise from 10 feet; crown one sided west; dense crown. |
| 226 | Red horsechestnut | 8 | Protected | 30% | Low | Multiple trunks arise from 5 feet; thin crown; dieback. |
| 227 | Red horsechestnut | 8 | Protected | 30% | Low | Multiple trunks arise from 3 feet; thin crown; dieback. |
| 228 | Red horsechestnut | 5 | Protected | 50% | Moderate | Strong central leader; thin crown. |
| 229 | Coast live oak | 23 | Protected | 70% | Moderate | Codominant trunks arise from 20 feet; crown one sided east; dense crown. |
| 230 | Red ironbark | 22 | Exception | 30% | Low | Multiple trunks arise from 10 feet; poor form and structure; history of branch failure; dead branches. |
| 231 | Red ironbark | 5,5,5,5,4 | Exception | 30% | Low | Stump sprout; long vertical stems from removed base. |
| 232 | Purpleleaf plum | 4 | Protected | 30% | Low | Codominant trunks arise from 4 feet; thin small crown; low vigor; 4 foot long trunk wound. |
| 233 | Red ironbark | 19 | Exception | 50% | Low | Codominant trunks arise from 10 feet; thin crown; wide spreading crown. |

Tree Assessment

Los Gatos Meadows
Los Gatos, CA
July 2020 update



| Tree No. | Species | Trunk Diameter (in.) | Protected Status | Condition out of 100% | Suitability for Preservation | Comments |
|----------|----------------|----------------------|------------------|-----------------------|------------------------------|---|
| 234 | Coast live oak | 10,9 | Protected | 50% | Moderate | Codominant trunks arise from 1 foot with seam; twig dieback throughout dense crown. |
| 235 | Toyon | 6,5,4,4 | Protected | 50% | Moderate | Multiple trunks arise from base; bushy. |
| 236 | California bay | 12 | Protected | 50% | Low | Leaning east; codominant trunks arise from 10 feet; one stem vertical one horizontal. |
| 237 | California bay | 11 | Protected | 50% | Moderate | Crook in trunk at 4 feet; narrow upright form. |
| 238 | Coast live oak | 14 | Protected | 50% | Low | Codominant trunks arise from 7 feet; dense crown one sided south; under utility lines; at edge of slope. |
| 239 | Olive | 10,5,5 | Exception | 50% | Moderate | Multiple trunks arise from 3 feet; dense crown one sided north. |
| 240 | Coast live oak | 28 | Large Protected | 50% | Low | Multiple trunks arise from 5 feet; dead branch; pruned away from utility lines; dense two dimensional crown; exposed roots. |
| 241 | California bay | 6 | Protected | 50% | Low | Young tree with exposed roots from eroding slope. |
| 242 | California bay | 5 | Protected | 50% | Low | Young tree with exposed roots from eroding slope. |
| 243 | Coast live oak | 27 | Large Protected | 10% | Low | Mostly dead. |
| 244 | Valley oak | 15 | Protected | 30% | Low | Small crown pruned away from utilities; plastic attached to trunk to keep sprouts from growing towards utilities? |
| 245 | Coast live oak | 4,4,4,3,3,2,2,2 | Protected | 30% | Low | Decaying stump sprout. |
| 246 | Valley oak | 26 | Large Protected | 50% | Low | Leaning east over building; minor dieback; pruned away from; utilities. |
| 247 | Coast live oak | 16 | Protected | 50% | Low | Trunk embedded in fence; multiple trunks arise from 10 feet; dense crown one sided east. |
| 248 | Coast live oak | 6,5,3 | Protected | 30% | Low | Decaying stump sprout. |
| 249 | Victorian box | 5,4,4,4,4,3,2 | Protected | 30% | Low | Multiple trunks arise from base; bushy; decaying stem at attachment. |

Tree Assessment

Los Gatos Meadows
Los Gatos, CA
July 2020 update



| Tree No. | Species | Trunk Diameter (in.) | Protected Status | Condition out of 100% | Suitability for Preservation | Comments |
|----------|---------------------------|----------------------|------------------|-----------------------|------------------------------|---|
| 250 | Blue gum | 50 | Large Protected | 30% | Low | Multiple trunks arise from 15 feet; heading cuts; pruned harshly; dead branch decaying into branch; poorly attached regrowth. |
| 251 | Valley oak | 28 | Large Protected | 70% | High | Off-site; base 15 feet from fence; overhangs fence by 20 feet. |
| 252 | Crabapple | 5 | Exception | 50% | Low | Codominant trunks arise from 5 feet; crown one sided east; suppressed. |
| 253 | Plum | 6,5,3 | Exception | 50% | Low | Multiple trunks arise from base; crown one sided east; suppressed. |
| 254 | Crabapple | 7 | Exception | 30% | Low | Swollen base with cavity; thin two dimensional crown. |
| 255 | Crabapple | 11 | Exception | 50% | Moderate | Multiple trunks arise from 3 feet; poorly pruned; dense wide spreading crown. |
| 256 | Bottlebrush | 4,4 | Protected | 70% | Moderate | Codominant trunks arise from 1 foot; trunks wrapping; dense crown; close to building. |
| 257 | Aleppo pine | 6 | Protected | 30% | Low | Poor form and structure; thin crown. |
| 258 | Victorian box | 4,3 | Protected | 50% | Low | Codominant trunks arise from base; trunk wound; sweep at base; small crown. |
| 259 | Victorian box | 6,5,2,2 | Protected | 50% | Moderate | Multiple trunks arise from base; basal sprouts; base in ivy; bushy. |
| 260 | Blue gum | 52 | Large Protected | 50% | Low | Property line tree; no tag; cannot see base; lower 30 feet covered in ivy. |
| 261 | Jacaranda | 7 | Protected | 50% | Moderate | Multiple trunks arise from 8 feet; sinuous trunk; attractive flowers. |
| 262 | Portugal laurel | 6,5,4,4,4 | Protected | 30% | Low | Multiple trunks arise from base; bushy; declining; dieback. |
| 263 | Japanese flowering cherry | 10 | Protected | 50% | Low | Multiple trunks arise from 4 feet; dieback; declining. |
| 264 | Coast live oak | 20 | Protected | 70% | High | Codominant trunks arise from 15 feet; dense crown. |
| 265 | Cherry | 12 | Exception | 30% | Low | Poorly attached codominant trunks arise from 5 feet; suppressed crown one sided north. |

Tree Assessment

Los Gatos Meadows
Los Gatos, CA
July 2020 update



| Tree No. | Species | Trunk Diameter (in.) | Protected Status | Condition out of 100% | Suitability for Preservation | Comments |
|----------|-------------------------|----------------------|------------------|-----------------------|------------------------------|---|
| 266 | California black walnut | 8 | Protected | 30% | Low | Half dead. |
| 267 | Coast live oak | 7 | Protected | 50% | Low | Sinuous trunk; leaning south over path; small crown. |
| 268 | California bay | 5 | Protected | 50% | Low | Codominant trunks arise from 10 feet; interior tree; narrow upright form. |
| 269 | African sumac | 12 | Protected | 10% | Low | Codominant trunks arise from 8 feet with 6 foot long trunk wound; poor form and structure; crown bowed south. |
| 270 | African sumac | 9,9 | Protected | 10% | Low | Codominant trunks arise from 2 feet with 6 foot long trunk wound; poor form and structure; crown bowed south. |
| 271 | Coast live oak | 11 | Protected | 50% | Low | Leaning north over neighboring property. |
| 272 | Coast live oak | 13 | Protected | 50% | Moderate | Multiple trunks arise from 15 feet; partially covered in ivy; interior tree. |
| 273 | African sumac | 13,11 | Protected | 50% | Low | Codominant trunks arise from 2 feet with 6 foot dead branch; crown bowed south. |
| 274 | Glossy privet | 8,5 | Exception | 50% | Moderate | Codominant trunks arise from base; partially covered in ivy; dense crown. |
| 275 | African sumac | 9,7 | Protected | 10% | Low | Codominant trunks arise from 2 feet with 6 foot long trunk wound; crown bowed south. |
| 276 | Crabapple | 13 | Exception | 70% | Moderate | Multiple trunks arise from 6 feet; swollen base; dense crown. |
| 277 | Crabapple | 13 | Exception | 70% | Moderate | Multiple trunks arise from 6 feet; base in ivy; dense crown. |
| 278 | California bay | 6,5 | Protected | 70% | Moderate | Base covered in ivy; codominant trunks arise from base; dense crown. |
| 279 | Flowering dogwood | 9,4 | Protected | 70% | High | Multiple trunks arise from 3 feet; chaotic structure; interior tree. |
| 280 | Coast live oak | 12,10 | Protected | 50% | Low | Codominant trunks arise from base; interior tree; dieback; base covered in ivy. |
| 281 | California bay | 6,4,3,2 | Protected | 50% | Low | Multiple trunks arise from base; base in ivy; suppressed to north. |

Tree Assessment

Los Gatos Meadows
Los Gatos, CA
July 2020 update



| Tree No. | Species | Trunk Diameter (in.) | Protected Status | Condition out of 100% | Suitability for Preservation | Comments |
|----------|-------------------|----------------------|------------------|-----------------------|------------------------------|---|
| 282 | Coast live oak | 15 | Protected | 70% | High | Codominant trunks arise from 7 feet; dense vase shaped crown. |
| 283 | Coast live oak | 9 | Protected | 50% | Low | Covered in ivy; suppressed south. |
| 284 | Windmill palm | | Exception | 90% | Moderate | 9 feet brown trunk height; growing in small space. |
| 285 | African fern-pine | 4 | Protected | 30% | Low | Poor form and structure; bent top; planted against wall. |
| 286 | Hollywood juniper | 12,6,5 | Protected | 50% | Low | Typical chaotic form; dense crown; base 4 foot from building; crown one sided north. |
| 287 | Red maple | 12 | Protected | 70% | High | Codominant trunks arise from 12 feet; dense, spreading crown. |
| 288 | White willow | 24 | Protected | 70% | Moderate | Codominant trunks arise from 8 feet; dense crown; basal sprout; branch headed. |
| 289 | Valley oak | 28 | Large Protected | 30% | Low | Codominant trunks arise from 10 feet; narrow upright form; dieback; 12 inch cavity decaying into trunk. |
| 290 | Sweetgum | 15 | Protected | 70% | High | Multiple trunks arise in upper crown; dense crown; slightly sinuous trunk; minor dieback. |
| 291 | Sweetgum | 20 | Protected | 50% | Moderate | Multiple trunks arise from 4 feet with bulge; dense crown; slightly sinuous trunk; minor dieback. |
| 292 | Coast live oak | 15 | Protected | 30% | Low | Codominant trunks arise from 12 feet; declining; extensive dieback. |
| 293 | Ginkgo | 5 | Protected | 50% | Moderate | Competing with bush; narrow upright form. |
| 294 | Coast live oak | 19 | Protected | 30% | Low | Poor form and structure; dead branch over road; dieback. |
| 295 | California bay | 6 | Protected | 30% | Low | Bowed east; covered in ivy. |
| 296 | Coast live oak | 26,25,17 | Large Protected | 50% | Moderate | Multiple trunks arise from base; wide spreading crown; reduced at perimeter. |
| 297 | Arroyo willow | 18,16 | Protected | 30% | Low | Partial failure; dense bushy crown. |
| 298 | Coast live oak | 18 | Protected | 50% | Low | Codominant trunks arise from 10 feet; crack and cavity in lowest branch; dense crown one sided east. |
| 299 | African fern-pine | 8 | Protected | 30% | Low | Poor form and structure; crown touching building. |

Tree Assessment

Los Gatos Meadows
Los Gatos, CA
July 2020 update



| Tree No. | Species | Trunk Diameter (in.) | Protected Status | Condition out of 100% | Suitability for Preservation | Comments |
|----------|-------------------|----------------------|------------------|-----------------------|------------------------------|--|
| 300 | African fern-pine | 8 | Protected | 30% | Low | Poor form and structure; crown touching building; 8 inch trunk wound. |
| 301 | Japanese maple | 5 | Protected | 50% | Moderate | Multiple trunks arise from 7 feet; narrow crown; growing in small space. |
| 302 | Crabapple | 9 | Exception | 50% | Low | Codominant trunks arise from 3 feet; cavity with decay at 5 feet. |
| 303 | Coast live oak | 19 | Protected | 50% | Moderate | Codominant trunks arise from 6 feet with seam; dense chaotic crown; headed back on east. |
| 304 | Coast live oak | 13 | Protected | 50% | Low | Codominant trunks arise from 15; narrow upright form; crown one sided east. |
| 305 | Coast live oak | 5 | Protected | 30% | Low | Codominant trunks arise from 4 feet; poor form and structure; suppressed. |
| 306 | Coast live oak | 9 | Protected | 30% | Low | Bowed east to horizontal; suppressed. |
| 307 | Coast live oak | 4 | Protected | 30% | Low | Small; stunted; suppressed; lost main stem. |
| 308 | Coast live oak | 12 | Protected | 10% | Low | Leaning heavily on eucalyptus; declining; dieback. |
| 309 | Sugar gum | 33 | Protected | 30% | Low | Dead main stem; 20 foot long trunk wound. |
| 310 | Sugar gum | 33 | Protected | 30% | Low | Dead codominant at 30 foot; trunk wound spreading down from there. |
| 311 | Coast live oak | 8 | Protected | 50% | Low | Codominant trunks arise from 4 feet; crown one sided west; narrow form; interior tree. |
| 312 | Coast live oak | 12 | Protected | 50% | Low | Leaning west; crown one sided west; dense crown. |
| 313 | Coast live oak | 17 | Protected | 50% | Low | Codominant trunk removed at 6 feet; upright form; thin crown; dieback. |
| 314 | California bay | 18,14 | Protected | 70% | High | Codominant trunks arise from base; dense crown; growing in ivy. |
| 315 | California bay | 9 | Protected | 50% | Moderate | Narrow upright form; leans west; dense crown. |
| 316 | California bay | 11 | Protected | 50% | Moderate | Narrow upright form; leans west; dense crown. |

Tree Assessment

Los Gatos Meadows
Los Gatos, CA
July 2020 update



| Tree No. | Species | Trunk Diameter (in.) | Protected Status | Condition out of 100% | Suitability for Preservation | Comments |
|----------|-----------------|----------------------|------------------|-----------------------|------------------------------|---|
| 317 | Valley oak | 18 | Protected | 30% | Low | Extremely sinuous trunk; low live crown ratio; difficult to see crown. |
| 318 | Coast live oak | 14 | Protected | 50% | Low | Codominant trunks arise from 5 feet; intertwined with valley oak; bushy. |
| 319 | California bay | 9,6,5 | Protected | 50% | Moderate | Multiple trunks arise from base; base in ivy; leans west; dense crown. |
| 320 | California bay | 9 | Protected | 50% | Low | Base in ivy; sinuous trunk crown one sided north. |
| 321 | Coast live oak | 14 | Protected | 30% | Low | Codominant trunks arise from 10 feet with seam; narrow crown; leaning heavily east. |
| 322 | California bay | 19 | Protected | 50% | Moderate | Codominant trunks arise from 20 feet; swollen base; yellow jacket nest at base. |
| 323 | Coast live oak | 10 | Protected | 50% | Low | Codominant trunks arise from 12 feet; bushy growth; leaning east. |
| 324 | Valley oak | 13 | Protected | 30% | Low | Poor form and structure; base flipped over root; small crown. |
| 325 | Coast live oak | 8 | Protected | 30% | Low | Poor form and structure; small stunted. |
| 326 | Coast live oak | 13 | Protected | 30% | Low | Poor form and structure; small crown; leaning east. |
| 327 | California bay | 10 | Protected | 30% | Low | Crook in trunk at 20 feet; dense, narrow crown; decay at base. |
| 328 | California bay | 12 | Protected | 30% | Low | Multiple trunks arise from 20 feet; dense, narrow crown; decay at base. |
| 329 | Coast live oak | 8 | Protected | 30% | Low | Poor form and structure; small stunted; leaning east; tangled with 330. |
| 330 | California bay | 10 | Protected | 30% | Low | Mostly dead; leaning east; tangled with 329. |
| 331 | Coast live oak | 17,14 | Protected | 70% | Moderate | Codominant trunks arise from 3 feet; base in ivy; dense crown. |
| 332 | Purpleleaf plum | 8 | Protected | 30% | Low | Codominant trunks arise from 5 feet; 1/4 dead, dieback. |
| 333 | Coast live oak | 27 | Protected | 10% | Low | Only epicormic growth; cabled with no tension. |

Tree Assessment

Los Gatos Meadows
Los Gatos, CA
July 2020 update



| Tree No. | Species | Trunk Diameter (in.) | Protected Status | Condition out of 100% | Suitability for Preservation | Comments |
|----------|------------------|----------------------|------------------|-----------------------|------------------------------|---|
| 334 | California bay | 12,11 | Protected | 30% | Low | Codominant trunks arise from 1 foot; swollen base; poor form and structure; basal decay. |
| 335 | Coast live oak | 10 | Protected | 30% | Low | Bowed north to horizontal; suppressed. |
| 336 | California bay | 10 | Protected | 50% | Low | Multiple trunks arise in upper crown; dense crown; dieback. |
| 337 | Coast live oak | 22,10 | Protected | 30% | Low | Codominant trunks arise from 2 feet with unusual swelling; declining; cavities in all branches. |
| 338 | California bay | 11 | Protected | 50% | Moderate | Narrow upright form; top bowed east; dense crown. |
| 339 | Coast live oak | 15 | Protected | 50% | Low | Narrow upright form; epicormic growth; declining. |
| 340 | Blackwood acacia | 5 | Exception | 70% | Low | Invasive volunteer; bushy upright form. |
| 341 | California bay | 12 | Protected | 50% | Low | Narrow upright form; sinuous trunk; dieback. |
| 342 | California bay | 12 | Protected | 50% | Low | Narrow upright form; sinuous trunk; dieback. |
| 343 | Coast live oak | 14 | Protected | 50% | Moderate | Codominant trunks arise from 25 feet; top bowed east; dead branch. |
| 344 | Coast live oak | 18 | Protected | 70% | Moderate | Upright form; crown one sided east; dense crown. |
| 345 | Coast live oak | 8 | Protected | 10% | Low | Most of tree removed. |
| 346 | Olive | 9,7 | Protected | 50% | Low | Codominant trunks arise from 1 foot; crown bowed east; two 4 foot long trunk wounds. |
| 347 | Coast live oak | 5 | Protected | 30% | Low | Small stunted tree; small crown. |
| 348 | Marina madrone | 14 | Protected | 90% | High | Nice tree; 5 feet from building. |
| 349 | Valley oak | 34 | Large Protected | 30% | Low | In 15x15 raised planter; declining; cabled; pruned harshly. |
| 350 | Valley oak | 37 | Large Protected | 50% | Low | Codominant trunks arise from 8 feet with 2 foot bleeding decaying cavity; thin crown; over pruned; 4 cables plus 2 failed to. |
| 351 | Coast live oak | 9 | Protected | 50% | Low | Codominant trunks arise from 5 feet with wide attachment; dense crown one sided south. |
| 352 | Coast live oak | 10 | Protected | 30% | Low | Codom poor form and structure; crown one sided west. |

Tree Assessment

Los Gatos Meadows
Los Gatos, CA
July 2020 update



| Tree No. | Species | Trunk Diameter (in.) | Protected Status | Condition out of 100% | Suitability for Preservation | Comments |
|----------|--------------------------|----------------------|------------------|-----------------------|------------------------------|--|
| 353 | Coast live oak | 13 | Protected | 50% | Moderate | Bowed slightly south; dense crown; growing in ivy. |
| 354 | New Zealand cabbage palm | 5 | Exception | 30% | Low | Poor form and structure; declining. |
| 355 | Hackberry | 6 | Protected | 10% | Low | Mostly dead. |
| 356 | Hackberry | 9 | Protected | 30% | Low | Half dead. |
| 357 | Italian cypress | 6 | Protected | 90% | Moderate | Typical narrow form; growing in very small curb cutout. |
| 358 | Italian cypress | 8 | Protected | 90% | Moderate | Typical narrow form; growing in very small curb cutout. |
| 359 | California bay | 10 | Protected | 30% | Low | Upright form; bushy crown; dieback; declining; yellow jacket nest at base. |
| 360 | California bay | 9 | Protected | 50% | Low | Sweep in lower trunk; dense crown; upright form. |
| 361 | California bay | 8 | Protected | 30% | Low | Narrow upright form; bowed east over road; dieback; dead branches. |
| 362 | California buckeye | 9 | Protected | 50% | Low | Multiple trunks arise from 7 feet; bowed east towards road; dense crown. |
| 363 | Coast live oak | 5,4 | Protected | 10% | Low | Mostly dead. |
| 364 | Coast live oak | 4 | Protected | 50% | Low | Small, stunted; searching for light; neighboring trees recently removed. |
| 365 | California bay | 4 | Protected | 50% | Low | Small stunted; searching for light; neighboring trees recently removed. |
| 366 | Bailey acacia | 5 | Protected | 10% | Low | Failed; topped. |
| 367 | Bailey acacia | 7 | Protected | 30% | Low | Topped; dead branches and decay. |
| 368 | Bailey acacia | 5 | Protected | 30% | Low | Topped; dead branches and decay. |
| 369 | Bailey acacia | 7,7,7,6 | Protected | 30% | Low | Poor form and structure; multiple trunks arise from base with poorly attached connections. |
| 370 | Bailey acacia | 10 | Protected | 30% | Low | Most of base removed; one stem remaining leaning heavily north. |
| 371 | Plum | 5,4 | Protected | 30% | Low | Codominant trunks arise from 3 feet; bowed heavily east. |

Tree Assessment

Los Gatos Meadows
Los Gatos, CA
July 2020 update



| Tree No. | Species | Trunk Diameter (in.) | Protected Status | Condition out of 100% | Suitability for Preservation | Comments |
|----------|----------------|----------------------|------------------|-----------------------|------------------------------|--|
| 372 | Coast live oak | 9.8 | Protected | 50% | Low | Codominant trunks arise from 1 foot; partially covered in ivy; small crown; interior tree. |
| 373 | California bay | 8 | Protected | 30% | Low | Completely covered in ivy. |
| 374 | Coast redwood | 10 | Protected | 90% | High | Good young tree. |
| 375 | Coast redwood | 14 | Protected | 90% | High | Good form and structure; dense crown. |

Tree Disposition



| Tree No. | Species | Trunk Diameter (in.) | Protected Status | Condition out of 100% | Disposition | Comment | Approx. crown diameter (feet) |
|----------|--------------------|----------------------|------------------|-----------------------|-------------|----------------------|-------------------------------|
| 1 | Coast redwood | 40 | Protected | 50% | Preserve | Outside of grading | ~30 |
| 2 | California bay | 8,8,7 | Protected | 50% | Preserve | Outside of grading | ~30 |
| 3 | California bay | 6,5 | Protected | 30% | Preserve | Outside of grading | ~30 |
| 4 | Valley oak | 17 | Protected | 50% | Preserve | Outside of grading | ~30 |
| 5 | Valley oak | 14 | Protected | 30% | Remove | Grading | ~20 |
| 6 | Coast live oak | 23 | Protected | 70% | Preserve | Outside of grading | ~30 |
| 7 | Blue gum | 40 | Protected | 30% | Remove | Road | ~30 |
| 8 | Blue gum | 38 | Protected | 30% | Remove | Road | ~30 |
| 9 | Blue gum | 20,7 | Exception | 30% | Remove | Road | ~20 |
| 10 | Blue gum | 54 | Protected | 30% | Remove | Road | ~50 |
| 11 | Blue gum | 28 | Protected | 30% | Remove | Road | ~30 |
| 12 | Blue gum | 39 | Protected | 30% | Remove | Road | ~30 |
| 13 | Canary Island pine | 21 | Protected | 70% | REMOVED | Removed 2019 | ~30 |
| 14 | Coast live oak | 15 | Protected | 50% | Remove | Road | ~20 |
| 15 | California bay | 10 | Protected | 50% | Remove | Road | ~20 |
| 16 | California bay | 10 | Protected | 50% | Remove | Grading | ~20 |
| 17 | California bay | 9,9 | Protected | 30% | Remove | Grading | ~20 |
| 18 | California bay | 5 | Protected | 10% | Remove | Grading | ~20 |
| 19 | California bay | 13,8 | Protected | 50% | Preserve | Not developing slope | ~30 |
| 20 | California bay | 11 | Protected | 30% | Remove | Grading | ~20 |
| 21 | California bay | 13 | Protected | 30% | Preserve | Not developing slope | ~30 |
| 22 | California buckeye | 9 | Protected | 50% | Preserve | Not developing slope | ~30 |
| 23 | California bay | 7 | Protected | 30% | Preserve | Not developing slope | ~50 |
| 24 | California bay | 17,16 | Protected | 70% | Preserve | Not developing slope | ~50 |
| 25 | California bay | 11 | Protected | 30% | Preserve | Not developing slope | ~20 |
| 26 | California bay | 12 | Protected | 50% | Preserve | Not developing slope | ~20 |
| 27 | California bay | 7 | Protected | 10% | Preserve | Not developing slope | ~20 |

Tree Disposition



| Tree No. | Species | Trunk Diameter (in.) | Protected Status | Condition out of 100% | Disposition | Comment | Approx. crown diameter (feet) |
|----------|----------------|----------------------|------------------|-----------------------|-------------|----------------------|-------------------------------|
| 28 | California bay | 8 | Protected | 10% | Preserve | Not developing slope | ~20 |
| 29 | California bay | 12,7,6 | Protected | 10% | Preserve | Not developing slope | ~50 |
| 30 | Valley oak | 34 | Large Protected | 70% | Preserve | Not developing slope | ~60 |
| 31 | California bay | 16 | Protected | 50% | Preserve | Not developing slope | ~30 |
| 32 | California bay | 8 | Protected | 50% | Preserve | Not developing slope | ~20 |
| 33 | California bay | 14,6 | Protected | 50% | Preserve | Not developing slope | ~20 |
| 34 | California bay | 8 | Protected | 30% | Preserve | Not developing slope | ~20 |
| 35 | California bay | 11,10,7 | Protected | 50% | Preserve | Not developing slope | ~30 |
| 36 | Coast live oak | 19 | Protected | 50% | Preserve | Not developing slope | ~30 |
| 37 | California bay | 10 | Protected | 30% | Preserve | Not developing slope | ~20 |
| 38 | Blue oak | 19 | Protected | 30% | Preserve | Not developing slope | ~20 |
| 39 | Coast live oak | 27 | Large Protected | 50% | Preserve | Not developing slope | ~30 |
| 40 | Valley oak | 17 | Protected | 30% | Preserve | Not developing slope | ~20 |
| 41 | California bay | 8,5,4 | Protected | 50% | Preserve | Not developing slope | ~20 |
| 42 | California bay | 5 | Protected | 50% | Preserve | Not developing slope | ~20 |
| 43 | Valley oak | 14 | Protected | 50% | Preserve | Not developing slope | ~30 |
| 44 | Coast live oak | 22 | Protected | 50% | Preserve | Not developing slope | ~50 |
| 45 | California bay | 6,5 | Protected | 50% | Preserve | Not developing slope | ~20 |
| 46 | California bay | 6 | Protected | 50% | Preserve | Not developing slope | ~20 |
| 47 | Valley oak | 17,13 | Protected | 50% | Preserve | Not developing slope | ~50 |
| 48 | California bay | 22,12 | Protected | 10% | Preserve | Not developing slope | ~50 |
| 49 | California bay | 7 | Protected | 50% | Preserve | Not developing slope | ~20 |
| 50 | California bay | 7 | Protected | 50% | Preserve | Not developing slope | ~20 |
| 51 | California bay | 7 | Protected | 30% | Preserve | Not developing slope | ~30 |
| 52 | California bay | 9 | Protected | 30% | Preserve | Not developing slope | ~30 |
| 53 | California bay | 10 | Protected | 50% | Preserve | Not developing slope | ~20 |
| 54 | California bay | 13,9 | Protected | 50% | Preserve | Not developing slope | ~30 |

Tree Disposition



| Tree No. | Species | Trunk Diameter (in.) | Protected Status | Condition out of 100% | Disposition | Comment | Approx. crown diameter (feet) |
|----------|----------------|----------------------|------------------|-----------------------|-------------|----------------------|-------------------------------|
| 55 | California bay | 6,5,5,4 | Protected | 50% | Preserve | Not developing slope | ~30 |
| 56 | California bay | 7 | Protected | 30% | Preserve | Not developing slope | ~30 |
| 57 | California bay | 9,8 | Protected | 30% | Preserve | Not developing slope | ~30 |
| 58 | California bay | 12 | Protected | 30% | Preserve | Not developing slope | ~30 |
| 59 | Coast live oak | 27,16 | Large Protected | 50% | Preserve | Not developing slope | ~60 |
| 60 | California bay | 14 | Protected | 10% | Preserve | Not developing slope | ~20 |
| 61 | California bay | 15 | Protected | 30% | Preserve | Not developing slope | ~30 |
| 62 | California bay | 13 | Protected | 30% | Preserve | Not developing slope | ~30 |
| 63 | California bay | 6 | Protected | 50% | Preserve | Not developing slope | ~20 |
| 64 | California bay | 10,9 | Protected | 50% | Preserve | Not developing slope | ~30 |
| 65 | California bay | 9 | Protected | 30% | Preserve | Not developing slope | ~30 |
| 66 | California bay | 11 | Protected | 30% | Preserve | Not developing slope | ~20 |
| 67 | Olive | 5,4,3,2 | Exception | 30% | Preserve | Not developing slope | ~20 |
| 68 | California bay | 6 | Protected | 50% | Preserve | Not developing slope | ~20 |
| 69 | California bay | 7 | Protected | 30% | Preserve | Not developing slope | ~20 |
| 70 | Coast live oak | 6 | Protected | 50% | Preserve | Not developing slope | ~20 |
| 71 | California bay | 17,8 | Protected | 50% | Preserve | Not developing slope | ~30 |
| 72 | Valley oak | 33 | Large Protected | 70% | Preserve | Not developing slope | ~60 |
| 73 | Olive | 5 | Exception | 50% | REMOVED | Removed 2019 | ~10 |
| 74 | Coast live oak | 6 | Protected | 50% | Preserve | Not developing slope | ~20 |
| 75 | Coast live oak | 30 | Large Protected | 50% | Preserve | Not developing slope | ~50 |
| 76 | Monterey pine | 15 | Protected | 50% | REMOVED | Removed 2019 | ~20 |
| 77 | Monterey pine | 17 | Protected | 50% | REMOVED | Removed 2019 | ~20 |
| 78 | Coast redwood | 7 | Protected | 90% | Remove | Road | ~10 |
| 79 | Coast redwood | 13 | Protected | 90% | Remove | Grading | ~20 |
| 80 | Blue oak | 12 | Protected | 50% | Remove | Road | ~20 |
| 81 | Coast redwood | 5 | Protected | 90% | Remove | Grading | ~10 |

Tree Disposition



| Tree No. | Species | Trunk Diameter (in.) | Protected Status | Condition out of 100% | Disposition | Comment | Approx. crown diameter (feet) |
|----------|------------------|----------------------|------------------|-----------------------|-------------|----------------------|-------------------------------|
| 82 | Coast redwood | 7 | Protected | 30% | Preserve | Not developing slope | ~20 |
| 83 | Monterey pine | 14 | Protected | 50% | REMOVED | Removed 2019 | ~20 |
| 84 | Bigleaf maple | 9 | Protected | 30% | Preserve | Not developing slope | ~30 |
| 85 | Coast redwood | 7 | Protected | 90% | Preserve | Not developing slope | ~10 |
| 86 | Valley oak | 19 | Protected | 70% | Preserve | Not developing slope | ~50 |
| 87 | Coast redwood | 10 | Protected | 90% | Preserve | Not developing slope | ~20 |
| 88 | Monterey pine | 8 | Protected | 50% | REMOVED | Removed 2019 | ~20 |
| 89 | Monterey pine | 8 | Protected | 50% | REMOVED | Removed 2019 | ~20 |
| 90 | Blackwood acacia | 10,6 | Exception | 30% | REMOVED | Removed 2019 | ~20 |
| 91 | Blackwood acacia | 5 | Exception | 30% | REMOVED | Removed 2019 | ~20 |
| 92 | Blackwood acacia | 8,7,4 | Exception | 30% | REMOVED | Removed 2019 | ~20 |
| 93 | Blackwood acacia | 5,5,5,4 | Exception | 30% | REMOVED | Removed 2019 | ~20 |
| 94 | California bay | 10 | Protected | 30% | Preserve | Not developing slope | ~20 |
| 95 | California bay | 16 | Protected | 30% | Preserve | Not developing slope | ~30 |
| 96 | California bay | 5 | Protected | 10% | Preserve | Not developing slope | ~10 |
| 97 | California bay | 10,6,5 4 4 | Protected | 50% | Preserve | Not developing slope | ~30 |
| 98 | Valley oak | 17,16 | Protected | 50% | Preserve | Not developing slope | ~50 |
| 99 | California bay | 7,6,6,5 | Protected | 50% | Preserve | Not developing slope | ~30 |
| 100 | California bay | 6 | Protected | 50% | Preserve | Not developing slope | ~20 |
| 101 | California bay | 5 | Protected | 70% | Preserve | Not developing slope | ~20 |
| 102 | California bay | 5,5,5,4,4,3,3,2,2 | Protected | 70% | Preserve | Not developing slope | ~50 |
| 103 | Coast redwood | 9 | Protected | 50% | Preserve | Not developing slope | ~20 |
| 104 | Coast redwood | 8 | Protected | 90% | Preserve | Not developing slope | ~20 |
| 105 | Coast redwood | 9 | Protected | 90% | Preserve | Not developing slope | ~20 |
| 106 | Coast redwood | 10 | Protected | 90% | Preserve | Not developing slope | ~20 |
| 107 | Coast redwood | 8 | Protected | 90% | Preserve | Not developing slope | ~20 |
| 108 | Coast redwood | 4 | Protected | 90% | Preserve | Not developing slope | ~10 |

Tree Disposition



| Tree No. | Species | Trunk Diameter (in.) | Protected Status | Condition out of 100% | Disposition | Comment | Approx. crown diameter (feet) |
|----------|--------------------|----------------------|------------------|-----------------------|-------------|----------------------|-------------------------------|
| 109 | Grecian laurel | 10,9,9 | Protected | 30% | Preserve | Not developing slope | ~20 |
| 110 | Grecian laurel | 6,6,5,5,4,3,3,2 | Protected | 30% | Preserve | Not developing slope | ~20 |
| 111 | Grecian laurel | 5,4,4,4,4,4,3,3,3 | Protected | 30% | Preserve | Not developing slope | ~20 |
| 112 | Olive | 6 | Exception | 50% | Preserve | Not developing slope | ~10 |
| 113 | Olive | 12,7 | Exception | 50% | Preserve | Not developing slope | ~20 |
| 114 | Olive | 10,6,5,4,3,2,2,2 | Exception | 50% | Preserve | Not developing slope | ~20 |
| 115 | Valley oak | 21 | Protected | 50% | Preserve | Not developing slope | ~30 |
| 116 | Blue gum | 47,32,17 | Large Protected | 50% | Preserve | Not developing slope | ~60 |
| 117 | Bronze loquat | 6 | Protected | 30% | Preserve | Not developing slope | ~20 |
| 118 | Coast live oak | 19,15 | Protected | 70% | Preserve | Not developing slope | ~50 |
| 119 | Coast live oak | 19 | Protected | 70% | Preserve | Not developing slope | ~50 |
| 120 | Valley oak | 14 | Protected | 50% | Preserve | Not developing slope | ~30 |
| 121 | Valley oak | 19 | Protected | 50% | Preserve | Not developing slope | ~30 |
| 122 | Coast live oak | 11 | Protected | 50% | Preserve | Not developing slope | ~20 |
| 123 | Olive | 7,7,5,4,4,3 | Exception | 50% | Preserve | Not developing slope | ~20 |
| 124 | Coast live oak | 25 | Large Protected | 10% | Preserve | Not developing slope | ~30 |
| 125 | Coast redwood | 19 | Protected | 10% | Remove | Grading | ~20 |
| 126 | Coast live oak | 7,7 | Protected | 10% | Preserve | Not developing slope | ~20 |
| 127 | Coast live oak | 8 | Protected | 10% | Preserve | Not developing slope | ~20 |
| 128 | Canary Island pine | 28 | Protected | 70% | REMOVED | Removed 2019 | ~30 |
| 129 | Coast live oak | 15 | Protected | 50% | Remove | Road | ~30 |
| 130 | Canary Island pine | 23 | Protected | 70% | REMOVED | Removed 2019 | ~30 |
| 131 | Canary Island pine | 26 | Protected | 30% | REMOVED | Removed 2019 | ~30 |
| 132 | Coast redwood | 7 | Protected | 90% | Remove | Road | ~20 |
| 133 | Canary Island pine | 22 | Protected | 70% | REMOVED | Removed 2019 | ~30 |
| 134 | Coast live oak | 18 | Protected | 70% | Remove | Road | ~50 |
| 135 | Canary Island pine | 22 | Protected | 70% | REMOVED | Removed 2019 | ~30 |

Tree Disposition



| Tree No. | Species | Trunk Diameter (in.) | Protected Status | Condition out of 100% | Disposition | Comment | Approx. crown diameter (feet) |
|----------|--------------------|----------------------|------------------|-----------------------|-------------|--------------|-------------------------------|
| 136 | Canary Island pine | 23 | Protected | 70% | REMOVED | Removed 2019 | ~30 |
| 137 | Canary Island pine | 21 | Protected | 70% | REMOVED | Removed 2019 | ~30 |
| 138 | Canary Island pine | 21 | Protected | 70% | REMOVED | Removed 2019 | ~30 |
| 139 | Bronze loquat | 5,3,3,3 | Protected | 50% | Remove | Road | ~20 |
| 140 | Bronze loquat | 6,4,2 | Protected | 30% | Remove | Road | ~20 |
| 141 | Crabapple | 8 | Exception | 70% | Remove | Grading | ~30 |
| 142 | Coast live oak | 18 | Protected | 70% | Remove | Grading | ~30 |
| 143 | Coast live oak | 16 | Protected | 70% | Remove | Grading | ~30 |
| 144 | Canary Island pine | 18 | Protected | 50% | REMOVED | Removed 2019 | ~30 |
| 145 | Canary Island pine | 22 | Protected | 70% | REMOVED | Removed 2019 | ~30 |
| 146 | Canary Island pine | 26 | Protected | 70% | REMOVED | Removed 2019 | ~30 |
| 147 | Douglas fir | 18 | Protected | 70% | Remove | Grading | ~30 |
| 148 | Douglas fir | 29 | Protected | 70% | Remove | Grading | ~30 |
| 149 | Hollywood juniper | 9,5 | Protected | 70% | Remove | Grading | ~30 |
| 150 | Douglas fir | 15 | Protected | 50% | Remove | Grading | ~30 |
| 151 | Douglas fir | 15 | Protected | 30% | Remove | Grading | ~30 |
| 152 | Douglas fir | 18 | Protected | 50% | Remove | Grading | ~30 |
| 153 | Douglas fir | 14 | Protected | 50% | Remove | Grading | ~30 |
| 154 | Valley oak | 11 | Protected | 70% | Remove | Grading | ~30 |
| 155 | Silk oak | 11 | Protected | 50% | Remove | Grading | ~30 |
| 156 | Coast live oak | 17 | Protected | 70% | Remove | Grading | ~30 |
| 157 | Coast live oak | 15 | Protected | 30% | Remove | Grading | ~50 |
| 158 | Douglas fir | 22 | Protected | 30% | Remove | Grading | ~30 |
| 159 | Coast live oak | 21 | Protected | 50% | Remove | Building | ~30 |
| 160 | Valley oak | 21 | Protected | 50% | Remove | Building | ~50 |
| 161 | Valley oak | 16 | Protected | 30% | Remove | Grading | ~30 |
| 162 | Coast live oak | 20 | Protected | 50% | Remove | Grading | ~30 |

Tree Disposition



| Tree No. | Species | Trunk Diameter (in.) | Protected Status | Condition out of 100% | Disposition | Comment | Approx. crown diameter (feet) |
|----------|--------------------|----------------------|------------------|-----------------------|-------------|----------------------|-------------------------------|
| 163 | Italian cypress | 5 | Protected | 90% | Remove | Grading | ~10 |
| 164 | Italian cypress | 6 | Protected | 90% | Remove | Grading | ~10 |
| 165 | Italian cypress | 6 | Protected | 90% | Remove | Grading | ~10 |
| 166 | Italian cypress | 5 | Protected | 90% | Remove | Grading | ~10 |
| 167 | Monterey pine | 4 | Protected | 90% | REMOVED | Removed 2019 | ~20 |
| 168 | Red horsechestnut | 5,2 | Protected | 90% | Remove | Building | ~20 |
| 169 | Coast live oak | 7 | Protected | 50% | Remove | Grading | ~20 |
| 170 | California bay | 17,10,6 | Protected | 30% | Preserve | Not developing slope | ~50 |
| 171 | California bay | 7,7,7,6,5,5,5,5 | Protected | 30% | Preserve | Not developing slope | ~30 |
| 172 | California bay | 8,5,5,4 | Protected | 30% | Preserve | Not developing slope | ~30 |
| 173 | California bay | 16 | Protected | 50% | Remove | Grading | ~30 |
| 174 | Coast live oak | 8 | Protected | 70% | Remove | Grading | ~20 |
| 175 | Coast live oak | 15 | Protected | 30% | Remove | Grading | ~30 |
| 176 | Sugar gum | 17,16 | Protected | 50% | Remove | Grading | ~30 |
| 177 | Sugar gum | 12,11,11,11 | Protected | 30% | Remove | Grading | ~50 |
| 178 | Deodar cedar | 6 | Protected | 90% | Remove | Grading | ~20 |
| 179 | Coast live oak | 14 | Protected | 50% | Remove | Grading | ~30 |
| 180 | Italian cypress | 5 | Protected | 90% | Remove | Grading | ~10 |
| 181 | Sitka spruce | 6 | Protected | 70% | Remove | Building | ~10 |
| 182 | Italian stone pine | 22 | Protected | 50% | REMOVED | Removed 2019 | ~30 |
| 183 | Italian stone pine | 19 | Protected | 50% | REMOVED | Removed 2019 | ~30 |
| 184 | Red ironbark | 13 | Exception | 10% | Remove | Building | ~20 |
| 185 | Incense cedar | 11 | Protected | 90% | Remove | Grading | ~20 |
| 186 | Italian cypress | 5 | Protected | 50% | Remove | Grading | ~10 |
| 187 | Italian cypress | 5 | Protected | 90% | Remove | Grading | ~10 |
| 188 | Blackwood acacia | 4 | Exception | 70% | REMOVED | Removed 2019 | ~10 |
| 189 | Coast live oak | 19 | Protected | 50% | Remove | Grading | ~50 |

Tree Disposition



| Tree No. | Species | Trunk Diameter (in.) | Protected Status | Condition out of 100% | Disposition | Comment | Approx. crown diameter (feet) |
|----------|-------------------|----------------------|------------------|-----------------------|-------------|--------------|-------------------------------|
| 190 | Red ironbark | 13 | Exception | 10% | Remove | Grading | ~30 |
| 191 | Blackwood acacia | 17 | Exception | 50% | REMOVED | Removed 2019 | ~30 |
| 192 | Red ironbark | 14 | Exception | 10% | Remove | Grading | ~30 |
| 193 | Hollywood juniper | 17 | Protected | 70% | Remove | Grading | ~20 |
| 194 | Hollywood juniper | 5,5,4,3,3,3 | Protected | 50% | Remove | Building | ~20 |
| 195 | Hollywood juniper | 11,7 | Protected | 50% | Remove | Building | ~20 |
| 196 | Blue blossom | 5,4,4 | Protected | 30% | Remove | Building | ~20 |
| 197 | Hollywood juniper | 18 | Protected | 50% | Remove | Building | ~20 |
| 198 | Hollywood juniper | 13 | Protected | 50% | Remove | Building | ~20 |
| 199 | Hollywood juniper | 11 | Protected | 50% | Remove | Building | ~20 |
| 200 | Hollywood juniper | 10 | Protected | 50% | Remove | Building | ~20 |
| 201 | Hollywood juniper | 12 | Protected | 50% | Remove | Building | ~20 |
| 202 | Hollywood juniper | 13 | Protected | 50% | Remove | Building | ~20 |
| 203 | Crabapple | 4,3 | Exception | 70% | Remove | Building | ~20 |
| 204 | Sawleaf zelkova | 23 | Protected | 50% | Remove | Grading | ~50 |
| 205 | Sawleaf zelkova | 22 | Protected | 30% | Remove | Grading | ~50 |
| 206 | Valley oak | 24 | Large Protected | 70% | Remove | Grading | ~50 |
| 207 | Sawleaf zelkova | 19 | Protected | 30% | Remove | Grading | ~50 |
| 208 | Sawleaf zelkova | 18 | Protected | 30% | Remove | Grading | ~50 |
| 209 | Mayten | 7 | Protected | 30% | Remove | Building | ~20 |
| 210 | Italian cypress | 14 | Protected | 70% | Remove | Building | ~10 |
| 211 | Italian cypress | 14 | Protected | 70% | Remove | Building | ~10 |
| 212 | Crabapple | 12 | Exception | 50% | Remove | Building | ~20 |
| 213 | Crabapple | 11 | Exception | 50% | Remove | Building | ~20 |
| 214 | Crabapple | 11 | Exception | 30% | Remove | Building | ~20 |
| 215 | Coast live oak | 22,22 | Protected | 50% | Remove | Road | ~50 |
| 216 | California bay | 10 | Protected | 50% | Remove | Road | ~20 |

Tree Disposition



| Tree No. | Species | Trunk Diameter (in.) | Protected Status | Condition out of 100% | Disposition | Comment | Approx. crown diameter (feet) |
|----------|-------------------|----------------------|------------------|-----------------------|-------------|----------------------|-------------------------------|
| 217 | Brazilian pepper | 5 | Protected | 50% | REMOVED | Removed 2019 | ~20 |
| 218 | Loquat | 6 | Protected | 70% | Remove | Building | ~20 |
| 219 | Blue gum | 36 | Protected | 50% | REMOVED | Removed 2019 | ~50 |
| 220 | Blue gum | 62 | Large Protected | 50% | REMOVED | Removed 2019 | ~60 |
| 221 | Blue gum | 36 | Protected | 50% | REMOVED | Removed 2019 | ~50 |
| 222 | African fern-pine | 5 | Protected | 70% | Remove | Building | ~20 |
| 223 | California bay | 13 | Protected | 50% | Remove | Road | ~20 |
| 224 | California bay | 13,13 | Protected | 50% | Remove | Road | ~30 |
| 225 | Coast live oak | 20 | Protected | 70% | Remove | Road | ~50 |
| 226 | Red horsechestnut | 8 | Protected | 30% | Remove | Grading | ~20 |
| 227 | Red horsechestnut | 8 | Protected | 30% | Remove | Grading | ~20 |
| 228 | Red horsechestnut | 5 | Protected | 50% | Remove | Grading | ~20 |
| 229 | Coast live oak | 23 | Protected | 70% | Remove | Grading | ~30 |
| 230 | Red ironbark | 22 | Exception | 30% | Remove | Road | ~30 |
| 231 | Red ironbark | 5,5,5,5,4 | Exception | 30% | Remove | Road | ~20 |
| 232 | Purpleleaf plum | 4 | Protected | 30% | REMOVED | Removed 2019 | ~10 |
| 233 | Red ironbark | 19 | Exception | 50% | Remove | Road | ~50 |
| 234 | Coast live oak | 10,9 | Protected | 50% | Remove | Grading | ~20 |
| 235 | Toyon | 6,5,4,4 | Protected | 50% | Preserve | Not developing slope | ~20 |
| 236 | California bay | 12 | Protected | 50% | Preserve | Not developing slope | ~30 |
| 237 | California bay | 11 | Protected | 50% | Preserve | Not developing slope | ~20 |
| 238 | Coast live oak | 14 | Protected | 50% | Preserve | Not developing slope | ~30 |
| 239 | Olive | 10,5,5 | Exception | 50% | Preserve | Not developing slope | ~20 |
| 240 | Coast live oak | 28 | Large Protected | 50% | Remove | Grading | ~50 |
| 241 | California bay | 6 | Protected | 50% | Remove | Grading | ~20 |
| 242 | California bay | 5 | Protected | 50% | Preserve | Not developing slope | ~20 |
| 243 | Coast live oak | 27 | Large Protected | 10% | Remove | Grading | ~30 |

Tree Disposition



| Tree No. | Species | Trunk Diameter (in.) | Protected Status | Condition out of 100% | Disposition | Comment | Approx. crown diameter (feet) |
|----------|---------------------------|----------------------|------------------|-----------------------|-------------|----------------------|-------------------------------|
| 244 | Valley oak | 15 | Protected | 30% | Remove | Grading | ~20 |
| 245 | Coast live oak | 4,4,4,3,3,2,2,2 | Protected | 30% | Remove | Grading | ~20 |
| 246 | Valley oak | 26 | Large Protected | 50% | Remove | Grading | ~30 |
| 247 | Coast live oak | 16 | Protected | 50% | Preserve | Not developing slope | ~30 |
| 248 | Coast live oak | 6,5,3 | Protected | 30% | Remove | Grading | ~20 |
| 249 | Victorian box | 5,4,4,4,4,3,2 | Protected | 30% | Remove | Road | ~20 |
| 250 | Blue gum | 50 | Large Protected | 30% | REMOVED | Removed 2019 | ~50 |
| 251 | Valley oak | 28 | Large Protected | 70% | Preserve | Outside of grading | ~50 |
| 252 | Crabapple | 5 | Exception | 50% | Remove | Grading | ~20 |
| 253 | Plum | 6,5,3 | Exception | 50% | Remove | Grading | ~20 |
| 254 | Crabapple | 7 | Exception | 30% | Remove | Grading | ~20 |
| 255 | Crabapple | 11 | Exception | 50% | Remove | Grading | ~30 |
| 256 | Bottlebrush | 4,4 | Protected | 70% | Remove | Building | ~20 |
| 257 | Aleppo pine | 6 | Protected | 30% | REMOVED | Removed 2019 | ~20 |
| 258 | Victorian box | 4,3 | Protected | 50% | Remove | Building | ~20 |
| 259 | Victorian box | 6,5,2,2 | Protected | 50% | Remove | Building | ~20 |
| 260 | Blue gum | 52 | Large Protected | 50% | Preserve | Outside of grading | ~50 |
| 261 | Jacaranda | 7 | Protected | 50% | Preserve | Outside of grading | ~20 |
| 262 | Portugal laurel | 6,5,4,4,4 | Protected | 30% | Preserve | Outside of grading | ~20 |
| 263 | Japanese flowering cherry | 10 | Protected | 50% | Remove | Grading | ~20 |
| 264 | Coast live oak | 20 | Protected | 70% | Remove | Grading | ~30 |
| 265 | Cherry | 12 | Exception | 30% | Remove | Grading | ~20 |
| 266 | California black walnut | 8 | Protected | 30% | Remove | Grading | ~20 |
| 267 | Coast live oak | 7 | Protected | 50% | Remove | Grading | ~10 |
| 268 | California bay | 5 | Protected | 50% | Remove | Grading | ~10 |
| 269 | African sumac | 12 | Protected | 10% | Remove | Grading | ~30 |
| 270 | African sumac | 9,9 | Protected | 10% | Remove | Grading | ~30 |

Tree Disposition



| Tree No. | Species | Trunk Diameter (in.) | Protected Status | Condition out of 100% | Disposition | Comment | Approx. crown diameter (feet) |
|----------|-------------------|----------------------|------------------|-----------------------|-------------|--------------------|-------------------------------|
| 271 | Coast live oak | 11 | Protected | 50% | Remove | Grading | ~20 |
| 272 | Coast live oak | 13 | Protected | 50% | Remove | Grading | ~20 |
| 273 | African sumac | 13,11 | Protected | 50% | Remove | Grading | ~20 |
| 274 | Glossy privet | 8,5 | Exception | 50% | REMOVED | Removed 2019 | ~20 |
| 275 | African sumac | 9,7 | Protected | 10% | Remove | Grading | ~20 |
| 276 | Crabapple | 13 | Exception | 70% | Remove | Road | ~20 |
| 277 | Crabapple | 13 | Exception | 70% | Remove | Road | ~20 |
| 278 | California bay | 6,5 | Protected | 70% | Remove | Building | ~20 |
| 279 | Flowering dogwood | 9,4 | Protected | 70% | Remove | Road | ~20 |
| 280 | Coast live oak | 12,10 | Protected | 50% | Remove | Grading | ~30 |
| 281 | California bay | 6,4,3,2 | Protected | 50% | Remove | Grading | ~20 |
| 282 | Coast live oak | 15 | Protected | 70% | Remove | Grading | ~30 |
| 283 | Coast live oak | 9 | Protected | 50% | Remove | Grading | ~20 |
| 284 | Windmill palm | 5 | Exception | 90% | Remove | Building | ~20 |
| 285 | African fern-pine | 4 | Protected | 30% | Remove | Building | ~10 |
| 286 | Hollywood juniper | 12,6,5 | Protected | 50% | Remove | Building | ~20 |
| 287 | Red maple | 12 | Protected | 70% | Remove | Building | ~30 |
| 288 | White willow | 24 | Protected | 70% | Remove | Building | ~50 |
| 289 | Valley oak | 28 | Large Protected | 30% | Remove | Grading | ~30 |
| 290 | Sweetgum | 15 | Protected | 70% | Remove | Grading | ~30 |
| 291 | Sweetgum | 20 | Protected | 50% | Remove | Grading | ~30 |
| 292 | Coast live oak | 15 | Protected | 30% | Remove | Grading | ~30 |
| 293 | Ginkgo | 5 | Protected | 50% | Remove | Building | ~20 |
| 294 | Coast live oak | 19 | Protected | 30% | Preserve | Outside of grading | ~30 |
| 295 | California bay | 6 | Protected | 30% | Preserve | Outside of grading | ~20 |
| 296 | Coast live oak | 26,25,17 | Large Protected | 50% | Remove | Grading | ~60 |
| 297 | Arroyo willow | 18,16 | Protected | 30% | Remove | Grading | ~30 |

Tree Disposition



| Tree No. | Species | Trunk Diameter (in.) | Protected Status | Condition out of 100% | Disposition | Comment | Approx. crown diameter (feet) |
|----------|-------------------|----------------------|------------------|-----------------------|-------------|----------|-------------------------------|
| 298 | Coast live oak | 18 | Protected | 50% | Remove | Grading | ~30 |
| 299 | African fern-pine | 8 | Protected | 30% | Remove | Road | ~20 |
| 300 | African fern-pine | 8 | Protected | 30% | Remove | Road | ~20 |
| 301 | Japanese maple | 5 | Protected | 50% | Remove | Building | ~20 |
| 302 | Crabapple | 9 | Exception | 50% | Remove | Building | ~20 |
| 303 | Coast live oak | 19 | Protected | 50% | Remove | Building | ~30 |
| 304 | Coast live oak | 13 | Protected | 50% | Remove | Grading | ~20 |
| 305 | Coast live oak | 5 | Protected | 30% | Remove | Grading | ~20 |
| 306 | Coast live oak | 9 | Protected | 30% | Remove | Grading | ~20 |
| 307 | Coast live oak | 4 | Protected | 30% | Remove | Grading | ~20 |
| 308 | Coast live oak | 12 | Protected | 10% | Remove | Grading | ~20 |
| 309 | Sugar gum | 33 | Protected | 30% | Remove | Grading | ~50 |
| 310 | Sugar gum | 33 | Protected | 30% | Remove | Grading | ~50 |
| 311 | Coast live oak | 8 | Protected | 50% | Remove | Grading | ~20 |
| 312 | Coast live oak | 12 | Protected | 50% | Remove | Grading | ~30 |
| 313 | Coast live oak | 17 | Protected | 50% | Remove | Road | ~30 |
| 314 | California bay | 18,14 | Protected | 70% | Remove | Road | ~30 |
| 315 | California bay | 9 | Protected | 50% | Remove | Road | ~20 |
| 316 | California bay | 11 | Protected | 50% | Remove | Road | ~20 |
| 317 | Valley oak | 18 | Protected | 30% | Remove | Road | ~30 |
| 318 | Coast live oak | 14 | Protected | 50% | Remove | Road | ~20 |
| 319 | California bay | 9,6,5 | Protected | 50% | Remove | Road | ~20 |
| 320 | California bay | 9 | Protected | 50% | Remove | Grading | ~20 |
| 321 | Coast live oak | 14 | Protected | 30% | Remove | Road | ~20 |
| 322 | California bay | 19 | Protected | 50% | Remove | Grading | ~30 |
| 323 | Coast live oak | 10 | Protected | 50% | Remove | Road | ~20 |
| 324 | Valley oak | 13 | Protected | 30% | Remove | Road | ~30 |

Tree Disposition



| Tree No. | Species | Trunk Diameter (in.) | Protected Status | Condition out of 100% | Disposition | Comment | Approx. crown diameter (feet) |
|----------|------------------|----------------------|------------------|-----------------------|-------------|--------------|-------------------------------|
| 325 | Coast live oak | 8 | Protected | 30% | Remove | Road | ~20 |
| 326 | Coast live oak | 13 | Protected | 30% | Remove | Road | ~20 |
| 327 | California bay | 10 | Protected | 30% | Remove | Road | ~20 |
| 328 | California bay | 12 | Protected | 30% | Remove | Grading | ~20 |
| 329 | Coast live oak | 8 | Protected | 30% | Remove | Grading | ~20 |
| 330 | California bay | 10 | Protected | 30% | Remove | Grading | ~20 |
| 331 | Coast live oak | 17,14 | Protected | 70% | Remove | Grading | ~30 |
| 332 | Purpleleaf plum | 8 | Protected | 30% | REMOVED | Removed 2019 | ~20 |
| 333 | Coast live oak | 27 | Protected | 10% | Remove | Grading | ~30 |
| 334 | California bay | 12,11 | Protected | 30% | Remove | Grading | ~30 |
| 335 | Coast live oak | 10 | Protected | 30% | Remove | Grading | ~20 |
| 336 | California bay | 10 | Protected | 50% | Remove | Grading | ~20 |
| 337 | Coast live oak | 22,10 | Protected | 30% | Remove | Grading | ~30 |
| 338 | California bay | 11 | Protected | 50% | Remove | Grading | ~20 |
| 339 | Coast live oak | 15 | Protected | 50% | Remove | Grading | ~20 |
| 340 | Blackwood acacia | 5 | Exception | 70% | REMOVED | Removed 2019 | ~20 |
| 341 | California bay | 12 | Protected | 50% | Remove | Grading | ~20 |
| 342 | California bay | 12 | Protected | 50% | Remove | Grading | ~20 |
| 343 | Coast live oak | 14 | Protected | 50% | Remove | Grading | ~30 |
| 344 | Coast live oak | 18 | Protected | 70% | Remove | Road | ~30 |
| 345 | Coast live oak | 8 | Protected | 10% | Remove | Grading | ~10 |
| 346 | Olive | 9,7 | Protected | 50% | REMOVED | Removed 2019 | ~20 |
| 347 | Coast live oak | 5 | Protected | 30% | Remove | Grading | ~10 |
| 348 | Marina madrone | 14 | Protected | 90% | Remove | Building | ~20 |
| 349 | Valley oak | 34 | Large Protected | 30% | Remove | Building | ~30 |
| 350 | Valley oak | 37 | Large Protected | 50% | Remove | Grading | ~50 |
| 351 | Coast live oak | 9 | Protected | 50% | Remove | Grading | ~20 |

Tree Disposition



| Tree No. | Species | Trunk Diameter (in.) | Protected Status | Condition out of 100% | Disposition | Comment | Approx. crown diameter (feet) |
|----------|-------------------------|----------------------|------------------|-----------------------|-------------|----------------------|-------------------------------|
| 352 | Coast live oak | 10 | Protected | 30% | Remove | Grading | ~20 |
| 353 | Coast live oak | 13 | Protected | 50% | Remove | Grading | ~20 |
| 354 | New Zealand cabbage pal | 5 | Exception | 30% | REMOVED | Removed 2019 | ~10 |
| 355 | Hackberry | 6 | Protected | 10% | Remove | Road | ~10 |
| 356 | Hackberry | 9 | Protected | 30% | Remove | Road | ~20 |
| 357 | Italian cypress | 6 | Protected | 90% | Remove | Road | ~10 |
| 358 | Italian cypress | 8 | Protected | 90% | Remove | Road | ~10 |
| 359 | California bay | 10 | Protected | 30% | Remove | Road | ~20 |
| 360 | California bay | 9 | Protected | 50% | Remove | Road | ~20 |
| 361 | California bay | 8 | Protected | 30% | Remove | Road | ~20 |
| 362 | California buckeye | 9 | Protected | 50% | Remove | Road | ~20 |
| 363 | Coast live oak | 5,4 | Protected | 10% | Remove | Grading | ~20 |
| 364 | Coast live oak | 4 | Protected | 50% | Preserve | Not developing slope | ~10 |
| 365 | California bay | 4 | Protected | 50% | Remove | Grading | ~10 |
| 366 | Bailey acacia | 5 | Protected | 10% | REMOVED | Removed 2019 | ~10 |
| 367 | Bailey acacia | 7 | Protected | 30% | REMOVED | Removed 2019 | ~20 |
| 368 | Bailey acacia | 5 | Protected | 30% | REMOVED | Removed 2019 | ~20 |
| 369 | Bailey acacia | 7,7,7,6 | Protected | 30% | REMOVED | Removed 2019 | ~30 |
| 370 | Bailey acacia | 1 | Protected | 30% | REMOVED | Removed 2019 | ~30 |
| 371 | Plum | 5,4 | Protected | 30% | Preserve | Not developing slope | ~20 |
| 372 | Coast live oak | 9,8 | Protected | 50% | Remove | Grading | ~20 |
| 373 | California bay | 8 | Protected | 30% | Remove | Grading | ~10 |
| 374 | Coast redwood | 10 | Protected | 90% | Preserve | Not developing slope | ~20 |
| 375 | Coast redwood | 14 | Protected | 90% | Preserve | Not developing slope | ~20 |

Tree Appraisal



| Tree No. | Species | Trunk Diameter (in.) | Protected Status | Appraised Value |
|----------|--------------------|----------------------|------------------|-----------------|
| 1 | Coast redwood | 40 | Protected | \$ 14,800 |
| 2 | California bay | 8,8,7 | Protected | \$ 3,000 |
| 3 | California bay | 6,5 | Protected | \$ 650 |
| 4 | Valley oak | 17 | Protected | \$ 6,200 |
| 5 | Valley oak | 14 | Protected | \$ 2,550 |
| 6 | Coast live oak | 23 | Protected | \$ 9,400 |
| 7 | Blue gum | 40 | Protected | \$ 2,950 |
| 8 | Blue gum | 38 | Protected | \$ 2,750 |
| 9 | Blue gum | 20,7 | Exception | \$ 900 |
| 10 | Blue gum | 54 | Protected | \$ 4,300 |
| 11 | Blue gum | 28 | Protected | \$ 1,600 |
| 12 | Blue gum | 39 | Protected | \$ 2,850 |
| 13 | Canary Island pine | 21 | Protected | \$ 7,850 |
| 14 | Coast live oak | 15 | Protected | \$ 2,900 |
| 15 | California bay | 10 | Protected | \$ 1,700 |
| 16 | California bay | 10 | Protected | \$ 1,700 |
| 17 | California bay | 9,9 | Protected | \$ 1,650 |
| 18 | California bay | 5 | Protected | \$ 100 |
| 19 | California bay | 13,8 | Protected | \$ 3,900 |
| 20 | California bay | 11 | Protected | \$ 1,250 |
| 21 | California bay | 13 | Protected | \$ 1,200 |
| 22 | California buckeye | 9 | Protected | \$ 950 |
| 23 | California bay | 7 | Protected | \$ 350 |
| 24 | California bay | 17,16 | Protected | \$ 8,750 |
| 25 | California bay | 11 | Protected | \$ 850 |
| 26 | California bay | 12 | Protected | \$ 2,100 |
| 27 | California bay | 7 | Protected | \$ 150 |
| 28 | California bay | 8 | Protected | \$ 150 |
| 29 | California bay | 12,7,6 | Protected | \$ 650 |
| | | | Large | |
| 30 | Valley oak | 34 | Protected | \$ 23,150 |
| 31 | California bay | 16 | Protected | \$ 2,950 |
| 32 | California bay | 8 | Protected | \$ 950 |
| 33 | California bay | 14,6 | Protected | \$ 3,350 |
| 34 | California bay | 8 | Protected | \$ 450 |
| 35 | California bay | 11,10,7 | Protected | \$ 3,100 |
| 36 | Coast live oak | 19 | Protected | \$ 3,950 |
| 37 | California bay | 10 | Protected | \$ 900 |
| 38 | Blue oak | 19 | Protected | \$ 3,100 |

Tree Appraisal



| Tree No. | Species | Trunk Diameter (in.) | Protected Status | Appraised Value |
|----------|----------------|----------------------|------------------|-----------------|
| | | | Large | |
| 39 | Coast live oak | 27 | Protected | \$ 7,950 |
| 40 | Valley oak | 17 | Protected | \$ 3,200 |
| 41 | California bay | 8,5,4 | Protected | \$ 1,250 |
| 42 | California bay | 5 | Protected | \$ 300 |
| 43 | Valley oak | 14 | Protected | \$ 2,900 |
| 44 | Coast live oak | 22 | Protected | \$ 4,250 |
| 45 | California bay | 6,5 | Protected | \$ 750 |
| 46 | California bay | 6 | Protected | \$ 450 |
| 47 | Valley oak | 17,13 | Protected | \$ 6,750 |
| 48 | California bay | 22,12 | Protected | \$ 1,450 |
| 49 | California bay | 7 | Protected | \$ 600 |
| 50 | California bay | 7 | Protected | \$ 600 |
| 51 | California bay | 7 | Protected | \$ 350 |
| 52 | California bay | 9 | Protected | \$ 700 |
| 53 | California bay | 10 | Protected | \$ 1,450 |
| 54 | California bay | 13,9 | Protected | \$ 3,600 |
| 55 | California bay | 6,5,5,4 | Protected | \$ 1,500 |
| 56 | California bay | 7 | Protected | \$ 350 |
| 57 | California bay | 9,8 | Protected | \$ 1,000 |
| 58 | California bay | 12 | Protected | \$ 1,000 |
| | | | Large | |
| 59 | Coast live oak | 27,16 | Protected | \$ 8,600 |
| 60 | California bay | 14 | Protected | \$ 450 |
| 61 | California bay | 15 | Protected | \$ 1,550 |
| 62 | California bay | 13 | Protected | \$ 1,450 |
| 63 | California bay | 6 | Protected | \$ 550 |
| 64 | California bay | 10,9 | Protected | \$ 2,600 |
| 65 | California bay | 9 | Protected | \$ 600 |
| 66 | California bay | 11 | Protected | \$ 850 |
| 67 | Olive | 5,4,3,2 | Exception | \$ 250 |
| 68 | California bay | 6 | Protected | \$ 450 |
| 69 | California bay | 7 | Protected | \$ 450 |
| 70 | Coast live oak | 6 | Protected | \$ 450 |
| 71 | California bay | 17,8 | Protected | \$ 6,750 |
| | | | Large | |
| 72 | Valley oak | 33 | Protected | \$ 36,300 |
| 73 | Olive | 5 | Exception | \$ 350 |
| 74 | Coast live oak | 6 | Protected | \$ 600 |

Tree Appraisal



| Tree No. | Species | Trunk Diameter (in.) | Protected Status | Appraised Value |
|----------|------------------|----------------------|------------------|-----------------|
| | | | Large | |
| 75 | Coast live oak | 30 | Protected | \$ 13,000 |
| 76 | Monterey pine | 15 | Protected | \$ 750 |
| 77 | Monterey pine | 17 | Protected | \$ 1,000 |
| 78 | Coast redwood | 7 | Protected | \$ 1,000 |
| 79 | Coast redwood | 13 | Protected | \$ 2,200 |
| 80 | Blue oak | 12 | Protected | \$ 2,450 |
| 81 | Coast redwood | 5 | Protected | \$ 550 |
| 82 | Coast redwood | 7 | Protected | \$ 250 |
| 83 | Monterey pine | 14 | Protected | \$ 450 |
| 84 | Bigleaf maple | 9 | Protected | \$ 150 |
| 85 | Coast redwood | 7 | Protected | \$ 700 |
| 86 | Valley oak | 19 | Protected | \$ 7,500 |
| 87 | Coast redwood | 10 | Protected | \$ 1,300 |
| 88 | Monterey pine | 8 | Protected | \$ 150 |
| 89 | Monterey pine | 8 | Protected | \$ 150 |
| 90 | Blackwood acacia | 10,6 | Exception | \$ 250 |
| 91 | Blackwood acacia | 5 | Exception | \$ 50 |
| 92 | Blackwood acacia | 8,7,4 | Exception | \$ 250 |
| 93 | Blackwood acacia | 5,5,5,4 | Exception | \$ 150 |
| 94 | California bay | 10 | Protected | \$ 700 |
| 95 | California bay | 16 | Protected | \$ 1,800 |
| 96 | California bay | 5 | Protected | \$ 50 |
| 97 | California bay | 10,6,5 4 4 | Protected | \$ 2,250 |
| 98 | Valley oak | 17,16 | Protected | \$ 13,300 |
| 99 | California bay | 7,6,6,5 | Protected | \$ 2,800 |
| 100 | California bay | 6 | Protected | \$ 750 |
| 101 | California bay | 5 | Protected | \$ 750 |
| 102 | California bay | 5,5,5,4,4,3,3,2,2 | Protected | \$ 2,500 |
| 103 | Coast redwood | 9 | Protected | \$ 1,000 |
| 104 | Coast redwood | 8 | Protected | \$ 1,450 |
| 105 | Coast redwood | 9 | Protected | \$ 1,800 |
| 106 | Coast redwood | 10 | Protected | \$ 1,500 |
| 107 | Coast redwood | 8 | Protected | \$ 1,450 |
| 108 | Coast redwood | 4 | Protected | \$ 450 |
| 109 | Grecian laurel | 10,9,9 | Protected | \$ 2,050 |
| 110 | Grecian laurel | 6,6,5,5,4,3,3,2 | Protected | \$ 950 |
| 111 | Grecian laurel | 5,4,4,4,4,4,3,3,3 | Protected | \$ 600 |
| 112 | Olive | 6 | Exception | \$ 450 |
| 113 | Olive | 12,7 | Exception | \$ 2,200 |

Tree Appraisal



| Tree No. | Species | Trunk Diameter (in.) | Protected Status | Appraised Value |
|----------|--------------------|----------------------|--------------------|-----------------|
| 114 | Olive | 10,6,5,4,3,2,2,2 | Exception | \$ 2,050 |
| 115 | Valley oak | 21 | Protected Large | \$ 10,800 |
| 116 | Blue gum | 47,32,17 | Protected | \$ 11,950 |
| 117 | Bronze loquat | 6 | Protected | \$ 400 |
| 118 | Coast live oak | 19,15 | Protected | \$ 11,850 |
| 119 | Coast live oak | 19 | Protected | \$ 6,450 |
| 120 | Valley oak | 14 | Protected | \$ 4,850 |
| 121 | Valley oak | 19 | Protected | \$ 8,850 |
| 122 | Coast live oak | 11 | Protected | \$ 1,600 |
| 123 | Olive | 7,7,5,4,4,3 | Exception Large | \$ 1,600 |
| 124 | Coast live oak | 25 | Protected | \$ 1,800 |
| 125 | Coast redwood | 19 | Protected | \$ 850 |
| 126 | Coast live oak | 7,7 | Protected | \$ 300 |
| 127 | Coast live oak | 8 | Protected | \$ 200 |
| 128 | Canary Island pine | 28 | Protected | \$ 13,900 |
| 129 | Coast live oak | 15 | Protected | \$ 3,300 |
| 130 | Canary Island pine | 23 | Protected | \$ 10,700 |
| 131 | Canary Island pine | 26 | Protected | \$ 5,850 |
| 132 | Coast redwood | 7 | Protected | \$ 1,000 |
| 133 | Canary Island pine | 22 | Protected | \$ 9,800 |
| 134 | Coast live oak | 18 | Protected | \$ 6,600 |
| 135 | Canary Island pine | 22 | Protected | \$ 8,600 |
| 136 | Canary Island pine | 23 | Protected | \$ 9,400 |
| 137 | Canary Island pine | 21 | Protected | \$ 7,850 |
| 138 | Canary Island pine | 21 | Protected | \$ 7,850 |
| 139 | Bronze loquat | 5,3,3,3 | Protected | \$ 900 |
| 140 | Bronze loquat | 6,4,2 | Protected | \$ 600 |
| 141 | Crabapple | 8 | Exception | \$ 1,200 |
| 142 | Coast live oak | 18 | Protected | \$ 5,800 |
| 143 | Coast live oak | 16 | Protected | \$ 3,550 |
| 144 | Canary Island pine | 18 | Protected | \$ 3,200 |
| 145 | Canary Island pine | 22 | Protected | \$ 6,650 |
| 146 | Canary Island pine | 26 | Protected | \$ 9,300 |
| 147 | Douglas fir | 18 | Protected | \$ 2,600 |
| 148 | Douglas fir | 29 | Protected | \$ 6,650 |
| 149 | Hollywood juniper | 9,5 | Protected | \$ 850 |
| 150 | Douglas fir | 15 | Protected | \$ 1,300 |
| 151 | Douglas fir | 15 | Protected | \$ 750 |

Tree Appraisal



| Tree No. | Species | Trunk Diameter (in.) | Protected Status | Appraised Value |
|----------|--------------------|----------------------|------------------|-----------------|
| 152 | Douglas fir | 18 | Protected | \$ 1,850 |
| 153 | Douglas fir | 14 | Protected | \$ 1,150 |
| 154 | Valley oak | 11 | Protected | \$ 3,700 |
| 155 | Silk oak | 11 | Protected | \$ 300 |
| 156 | Coast live oak | 17 | Protected | \$ 3,550 |
| 157 | Coast live oak | 15 | Protected | \$ 1,200 |
| 158 | Douglas fir | 22 | Protected | \$ 1,150 |
| 159 | Coast live oak | 21 | Protected | \$ 3,850 |
| 160 | Valley oak | 21 | Protected | \$ 6,500 |
| 161 | Valley oak | 16 | Protected | \$ 2,300 |
| 162 | Coast live oak | 20 | Protected | \$ 3,500 |
| 163 | Italian cypress | 5 | Protected | \$ 400 |
| 164 | Italian cypress | 6 | Protected | \$ 500 |
| 165 | Italian cypress | 6 | Protected | \$ 500 |
| 166 | Italian cypress | 5 | Protected | \$ 400 |
| 167 | Monterey pine | 4 | Protected | \$ 100 |
| 168 | Red horsechestnut | 5,2 | Protected | \$ 950 |
| 169 | Coast live oak | 7 | Protected | \$ 700 |
| 170 | California bay | 17,10,6 | Protected | \$ 4,250 |
| 171 | California bay | 7,7,7,6,5,5,5,5 | Protected | \$ 1,850 |
| 172 | California bay | 8,5,5,4 | Protected | \$ 1,300 |
| 173 | California bay | 16 | Protected | \$ 4,300 |
| 174 | Coast live oak | 8 | Protected | \$ 1,200 |
| 175 | Coast live oak | 15 | Protected | \$ 1,750 |
| 176 | Sugar gum | 17,16 | Protected | \$ 1,850 |
| 177 | Sugar gum | 12,11,11,11 | Protected | \$ 1,050 |
| 178 | Deodar cedar | 6 | Protected | \$ 900 |
| 179 | Coast live oak | 14 | Protected | \$ 2,550 |
| 180 | Italian cypress | 5 | Protected | \$ 400 |
| 181 | Sitka spruce | 6 | Protected | \$ 450 |
| 182 | Italian stone pine | 22 | Protected | \$ 2,950 |
| 183 | Italian stone pine | 19 | Protected | \$ 2,000 |
| 184 | Red ironbark | 13 | Exception | \$ 50 |
| 185 | Incense cedar | 11 | Protected | \$ 1,550 |
| 186 | Italian cypress | 5 | Protected | \$ 200 |
| 187 | Italian cypress | 5 | Protected | \$ 400 |
| 188 | Blackwood acacia | 4 | Exception | \$ 100 |
| 189 | Coast live oak | 19 | Protected | \$ 4,600 |
| 190 | Red ironbark | 13 | Exception | \$ 50 |
| 191 | Blackwood acacia | 17 | Exception | \$ 950 |

Tree Appraisal



| Tree No. | Species | Trunk Diameter (in.) | Protected Status | Appraised Value |
|----------|-------------------|----------------------|------------------|-----------------|
| 192 | Red ironbark | 14 | Exception | \$ 50 |
| 193 | Hollywood juniper | 17 | Protected | \$ 2,250 |
| 194 | Hollywood juniper | 5,5,4,3,3,3 | Protected | \$ 550 |
| 195 | Hollywood juniper | 11,7 | Protected | \$ 1,200 |
| 196 | Blue blossom | 5,4,4 | Protected | \$ 450 |
| 197 | Hollywood juniper | 18 | Protected | \$ 2,250 |
| 198 | Hollywood juniper | 13 | Protected | \$ 1,200 |
| 199 | Hollywood juniper | 11 | Protected | \$ 850 |
| 200 | Hollywood juniper | 10 | Protected | \$ 700 |
| 201 | Hollywood juniper | 12 | Protected | \$ 1,000 |
| 202 | Hollywood juniper | 13 | Protected | \$ 1,200 |
| 203 | Crabapple | 4,3 | Exception | \$ 600 |
| 204 | Sawleaf zelkova | 23 | Protected | \$ 7,950 |
| 205 | Sawleaf zelkova | 22 | Protected | \$ 4,350 |
| | | | Large | |
| 206 | Valley oak | 24 | Protected | \$ 21,850 |
| 207 | Sawleaf zelkova | 19 | Protected | \$ 3,250 |
| 208 | Sawleaf zelkova | 18 | Protected | \$ 2,950 |
| 209 | Mayten | 7 | Protected | \$ 300 |
| 210 | Italian cypress | 14 | Protected | \$ 1,500 |
| 211 | Italian cypress | 14 | Protected | \$ 1,500 |
| 212 | Crabapple | 12 | Exception | \$ 1,450 |
| 213 | Crabapple | 11 | Exception | \$ 1,200 |
| 214 | Crabapple | 11 | Exception | \$ 750 |
| 215 | Coast live oak | 22,22 | Protected | \$ 12,250 |
| 216 | California bay | 10 | Protected | \$ 1,700 |
| 217 | Brazilian pepper | 5 | Protected | \$ 350 |
| 218 | Loquat | 6 | Protected | \$ 650 |
| 219 | Blue gum | 36 | Protected | \$ 3,250 |
| | | | Large | |
| 220 | Blue gum | 62 | Protected | \$ 6,350 |
| 221 | Blue gum | 36 | Protected | \$ 3,250 |
| 222 | African fern-pine | 5 | Protected | \$ 650 |
| 223 | California bay | 13 | Protected | \$ 2,850 |
| 224 | California bay | 13,13 | Protected | \$ 5,650 |
| 225 | Coast live oak | 20 | Protected | \$ 7,150 |
| 226 | Red horsechestnut | 8 | Protected | \$ 850 |
| 227 | Red horsechestnut | 8 | Protected | \$ 850 |
| 228 | Red horsechestnut | 5 | Protected | \$ 600 |
| 229 | Coast live oak | 23 | Protected | \$ 7,300 |

Tree Appraisal



| Tree No. | Species | Trunk Diameter (in.) | Protected Status | Appraised Value |
|----------|---------------------------|----------------------|--------------------|-----------------|
| 230 | Red ironbark | 22 | Exception | \$ 700 |
| 231 | Red ironbark | 5,5,5,5,4 | Exception | \$ 150 |
| 232 | Purpleleaf plum | 4 | Protected | \$ 50 |
| 233 | Red ironbark | 19 | Exception | \$ 850 |
| 234 | Coast live oak | 10,9 | Protected | \$ 2,350 |
| 235 | Toyon | 6,5,4,4 | Protected | \$ 750 |
| 236 | California bay | 12 | Protected | \$ 2,450 |
| 237 | California bay | 11 | Protected | \$ 2,050 |
| 238 | Coast live oak | 14 | Protected | \$ 2,550 |
| 239 | Olive | 10,5,5 | Exception Large | \$ 1,500 |
| 240 | Coast live oak | 28 | Protected | \$ 9,900 |
| 241 | California bay | 6 | Protected | \$ 650 |
| 242 | California bay | 5 | Protected Large | \$ 450 |
| 243 | Coast live oak | 27 | Protected | \$ 1,850 |
| 244 | Valley oak | 15 | Protected | \$ 2,900 |
| 245 | Coast live oak | 4,4,4,3,3,2,2,2 | Protected Large | \$ 450 |
| 246 | Valley oak | 26 | Protected | \$ 14,450 |
| 247 | Coast live oak | 16 | Protected | \$ 3,300 |
| 248 | Coast live oak | 6,5,3 | Protected | \$ 500 |
| 249 | Victorian box | 5,4,4,4,4,3,2 | Protected Large | \$ 800 |
| 250 | Blue gum | 50 | Protected Large | \$ 3,400 |
| 251 | Valley oak | 28 | Protected | \$ 20,200 |
| 252 | Crabapple | 5 | Exception | \$ 300 |
| 253 | Plum | 6,5,3 | Exception | \$ 750 |
| 254 | Crabapple | 7 | Exception | \$ 300 |
| 255 | Crabapple | 11 | Exception | \$ 1,200 |
| 256 | Bottlebrush | 4,4 | Protected | \$ 500 |
| 257 | Aleppo pine | 6 | Protected | \$ 150 |
| 258 | Victorian box | 4,3 | Protected | \$ 400 |
| 259 | Victorian box | 6,5,2,2 | Protected Large | \$ 1,000 |
| 260 | Blue gum | 52 | Protected | \$ 5,950 |
| 261 | Jacaranda | 7 | Protected | \$ 300 |
| 262 | Portugal laurel | 6,5,4,4,4 | Protected | \$ 600 |
| 263 | Japanese flowering cherry | 10 | Protected | \$ 1,050 |

Tree Appraisal



| Tree No. | Species | Trunk Diameter (in.) | Protected Status | Appraised Value |
|----------|-------------------------|----------------------|------------------|-----------------|
| 264 | Coast live oak | 20 | Protected | \$ 6,150 |
| 265 | Cherry | 12 | Exception | \$ 950 |
| 266 | California black walnut | 8 | Protected | \$ 200 |
| 267 | Coast live oak | 7 | Protected | \$ 600 |
| 268 | California bay | 5 | Protected | \$ 400 |
| 269 | African sumac | 12 | Protected | \$ 400 |
| 270 | African sumac | 9,9 | Protected | \$ 450 |
| 271 | Coast live oak | 11 | Protected | \$ 1,350 |
| 272 | Coast live oak | 13 | Protected | \$ 1,900 |
| 273 | African sumac | 13,11 | Protected | \$ 3,750 |
| 274 | Glossy privet | 8,5 | Exception | \$ 300 |
| 275 | African sumac | 9,7 | Protected | \$ 400 |
| 276 | Crabapple | 13 | Exception | \$ 2,350 |
| 277 | Crabapple | 13 | Exception | \$ 2,350 |
| 278 | California bay | 6,5 | Protected | \$ 1,450 |
| 279 | Flowering dogwood | 9,4 | Protected | \$ 1,200 |
| 280 | Coast live oak | 12,10 | Protected | \$ 2,150 |
| 281 | California bay | 6,4,3,2 | Protected | \$ 950 |
| 282 | Coast live oak | 15 | Protected | \$ 2,800 |
| 283 | Coast live oak | 9 | Protected | \$ 950 |
| 284 | Windmill palm | 5 | Exception | \$ 800 |
| 285 | African fern-pine | 4 | Protected | \$ 200 |
| 286 | Hollywood juniper | 12,6,5 | Protected | \$ 1,450 |
| 287 | Red maple | 12 | Protected | \$ 2,100 |
| 288 | White willow | 24 | Protected | \$ 3,450 |
| Large | | | | |
| 289 | Valley oak | 28 | Protected | \$ 12,700 |
| 290 | Sweetgum | 15 | Protected | \$ 4,750 |
| 291 | Sweetgum | 20 | Protected | \$ 6,050 |
| 292 | Coast live oak | 15 | Protected | \$ 1,700 |
| 293 | Ginkgo | 5 | Protected | \$ 200 |
| 294 | Coast live oak | 19 | Protected | \$ 2,750 |
| 295 | California bay | 6 | Protected | \$ 400 |
| Large | | | | |
| 296 | Coast live oak | 26,25,17 | Protected | \$ 20,050 |
| 297 | Arroyo willow | 18,16 | Protected | \$ 1,000 |
| 298 | Coast live oak | 18 | Protected | \$ 4,150 |
| 299 | African fern-pine | 8 | Protected | \$ 500 |
| 300 | African fern-pine | 8 | Protected | \$ 500 |
| 301 | Japanese maple | 5 | Protected | \$ 350 |

Tree Appraisal



| Tree No. | Species | Trunk Diameter (in.) | Protected Status | Appraised Value |
|----------|------------------|----------------------|------------------|-----------------|
| 302 | Crabapple | 9 | Exception | \$ 800 |
| 303 | Coast live oak | 19 | Protected | \$ 3,550 |
| 304 | Coast live oak | 13 | Protected | \$ 1,700 |
| 305 | Coast live oak | 5 | Protected | \$ 150 |
| 306 | Coast live oak | 9 | Protected | \$ 450 |
| 307 | Coast live oak | 4 | Protected | \$ 100 |
| 308 | Coast live oak | 12 | Protected | \$ 250 |
| 309 | Sugar gum | 33 | Protected | \$ 1,500 |
| 310 | Sugar gum | 33 | Protected | \$ 1,500 |
| 311 | Coast live oak | 8 | Protected | \$ 600 |
| 312 | Coast live oak | 12 | Protected | \$ 1,300 |
| 313 | Coast live oak | 17 | Protected | \$ 2,550 |
| 314 | California bay | 18,14 | Protected | \$ 8,350 |
| 315 | California bay | 9 | Protected | \$ 950 |
| 316 | California bay | 11 | Protected | \$ 2,050 |
| 317 | Valley oak | 18 | Protected | \$ 4,200 |
| 318 | Coast live oak | 14 | Protected | \$ 2,550 |
| 319 | California bay | 9,6,5 | Protected | \$ 1,650 |
| 320 | California bay | 9 | Protected | \$ 1,400 |
| 321 | Coast live oak | 14 | Protected | \$ 1,500 |
| 322 | California bay | 19 | Protected | \$ 4,150 |
| 323 | Coast live oak | 10 | Protected | \$ 1,300 |
| 324 | Valley oak | 13 | Protected | \$ 2,200 |
| 325 | Coast live oak | 8 | Protected | \$ 500 |
| 326 | Coast live oak | 13 | Protected | \$ 1,300 |
| 327 | California bay | 10 | Protected | \$ 1,000 |
| 328 | California bay | 12 | Protected | \$ 1,000 |
| 329 | Coast live oak | 8 | Protected | \$ 350 |
| 330 | California bay | 10 | Protected | \$ 700 |
| 331 | Coast live oak | 17,14 | Protected | \$ 5,950 |
| 332 | Purpleleaf plum | 8 | Protected | \$ 200 |
| 333 | Coast live oak | 27 | Protected | \$ 1,250 |
| 334 | California bay | 12,11 | Protected | \$ 1,850 |
| 335 | Coast live oak | 10 | Protected | \$ 550 |
| 336 | California bay | 10 | Protected | \$ 1,200 |
| 337 | Coast live oak | 22,10 | Protected | \$ 3,050 |
| 338 | California bay | 11 | Protected | \$ 1,400 |
| 339 | Coast live oak | 15 | Protected | \$ 2,000 |
| 340 | Blackwood acacia | 5 | Exception | \$ 100 |
| 341 | California bay | 12 | Protected | \$ 1,700 |

Tree Appraisal



| Tree No. | Species | Trunk Diameter (in.) | Protected Status | Appraised Value |
|----------|-------------------------|----------------------|------------------|-------------------|
| 342 | California bay | 12 | Protected | \$ 1,700 |
| 343 | Coast live oak | 14 | Protected | \$ 1,750 |
| 344 | Coast live oak | 18 | Protected | \$ 5,800 |
| 345 | Coast live oak | 8 | Protected | \$ 150 |
| 346 | Olive | 9,7 | Protected | \$ 1,300 |
| 347 | Coast live oak | 5 | Protected | \$ 150 |
| 348 | Marina madrone | 14 | Protected | \$ 5,900 |
| | | | Large | |
| 349 | Valley oak | 34 | Protected | \$ 11,150 |
| | | | Large | |
| 350 | Valley oak | 37 | Protected | \$ 21,450 |
| 351 | Coast live oak | 9 | Protected | \$ 750 |
| 352 | Coast live oak | 10 | Protected | \$ 550 |
| 353 | Coast live oak | 13 | Protected | \$ 2,200 |
| 354 | New Zealand cabbage pal | 5 | Exception | \$ 50 |
| 355 | Hackberry | 6 | Protected | \$ 100 |
| 356 | Hackberry | 9 | Protected | \$ 500 |
| 357 | Italian cypress | 6 | Protected | \$ 500 |
| 358 | Italian cypress | 8 | Protected | \$ 850 |
| 359 | California bay | 10 | Protected | \$ 1,000 |
| 360 | California bay | 9 | Protected | \$ 1,400 |
| 361 | California bay | 8 | Protected | \$ 650 |
| 362 | California buckeye | 9 | Protected | \$ 1,400 |
| 363 | Coast live oak | 5,4 | Protected | \$ 100 |
| 364 | Coast live oak | 4 | Protected | \$ 250 |
| 365 | California bay | 4 | Protected | \$ 250 |
| 366 | Bailey acacia | 5 | Protected | \$ - |
| 367 | Bailey acacia | 7 | Protected | \$ 50 |
| 368 | Bailey acacia | 5 | Protected | \$ - |
| 369 | Bailey acacia | 7,7,7,6 | Protected | \$ 150 |
| 370 | Bailey acacia | 1 | Protected | \$ 100 |
| 371 | Plum | 5,4 | Protected | \$ 250 |
| 372 | Coast live oak | 9,8 | Protected | \$ 1,600 |
| 373 | California bay | 8 | Protected | \$ 550 |
| 374 | Coast redwood | 10 | Protected | \$ 1,650 |
| 375 | Coast redwood | 14 | Protected | \$ 3,150 |
| | | | Total | \$ 991,050 |

*This Page
Intentionally
Left Blank*