



**Pinehurst Community Garden (CIP No. 831-4610)
& Lynn Avenue Pedestrian Path Design
(CIP No. 832-4510)**

**Town Council Study Session
December 19, 2023**



Overview

Project Overview

Project Development Process

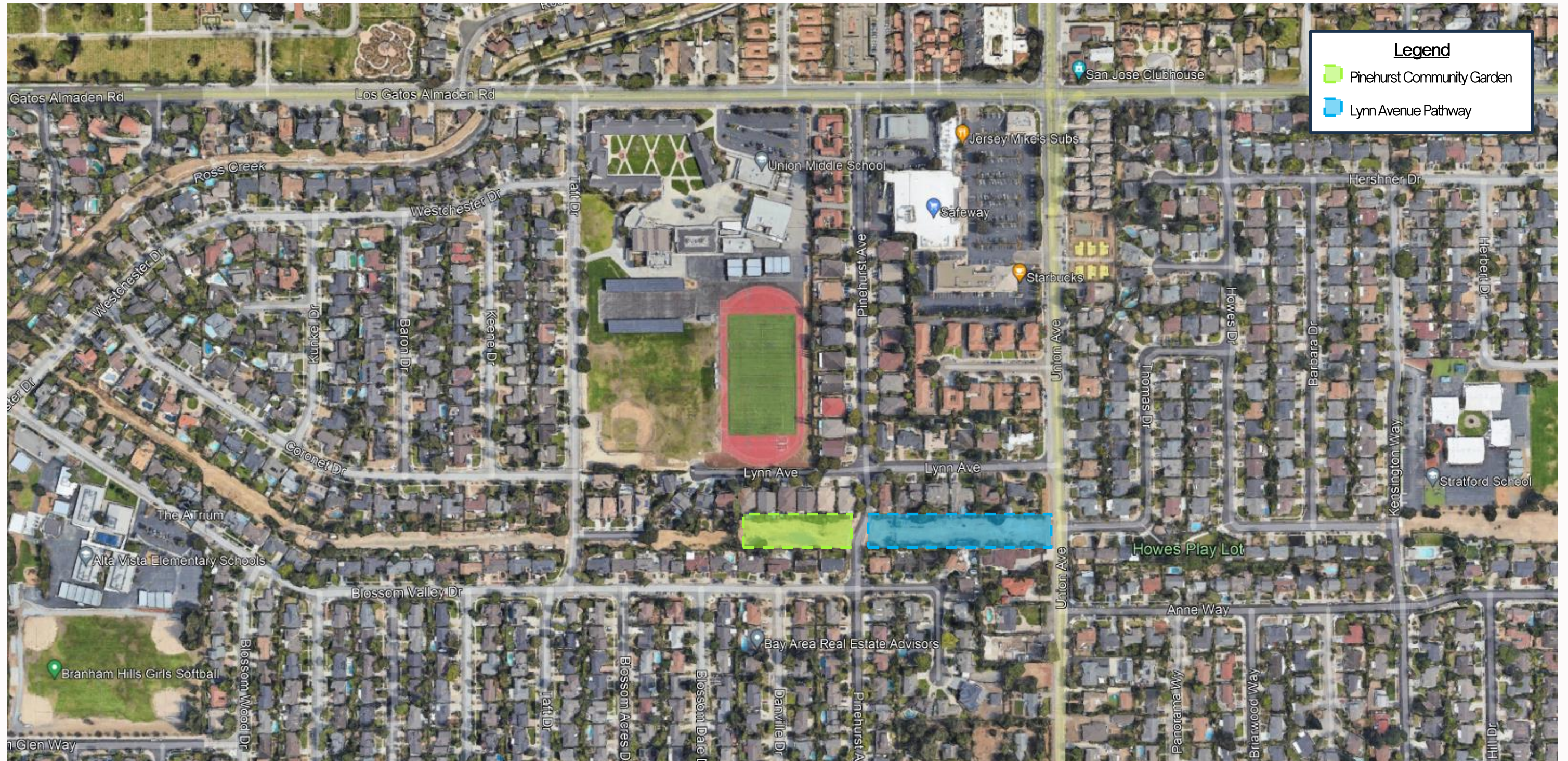
Preliminary Concepts

Community Feedback

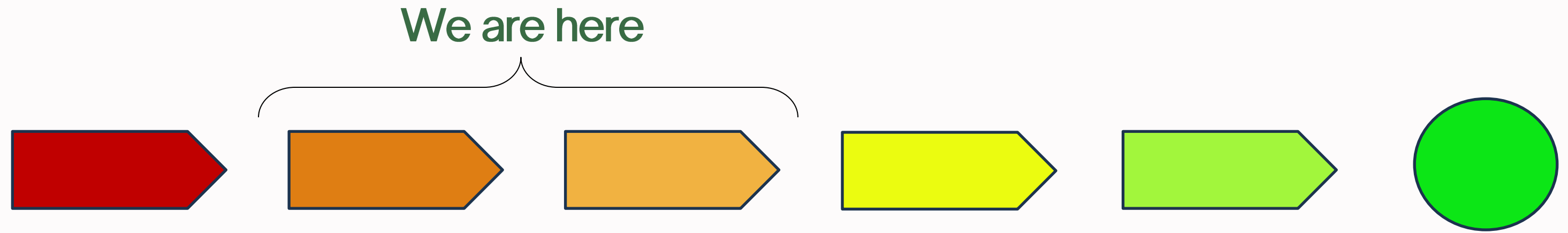
Next Steps



Project Overview



Project Development Process



| Identify | Study | Plan | Design | Construct | Open |
|--|--|---|-----------------------|----------------|-----------------------------------|
| Basic Analysis | Technical Analysis | Community Engagement and Preliminary Designs | Completed Designs | Construction | Operation and Maintenance |
| Define | Analyze | Outreach and Preliminary Designs | Assemble Funds | Assemble Funds | Assemble Funds |
| Outcome | | | | | |
| Defining and aligning projects and identifying limitations | Surveying, soil sampling, Utility direction, researching community gardens | Community Engagement Delivery of 35% Design Concepts | Completed plans/specs | Built Project | Ongoing operation and maintenance |
| Timeline | | | | | |
| 1 month – 1 year | 6 months – 1 year | 1 year | 1 year | 1 year | Ongoing |



Benefits of a Community Garden

Increase access
to fresh foods

Create a
community
space for people
to come together

In alignment with
goals on the
Senior Services
Roadmap

Promotes
environmental
learning and
education

Increase food
security

Beautifies area
and reduces
littering on
vacant lot

Increased
physical activity
through
gardening

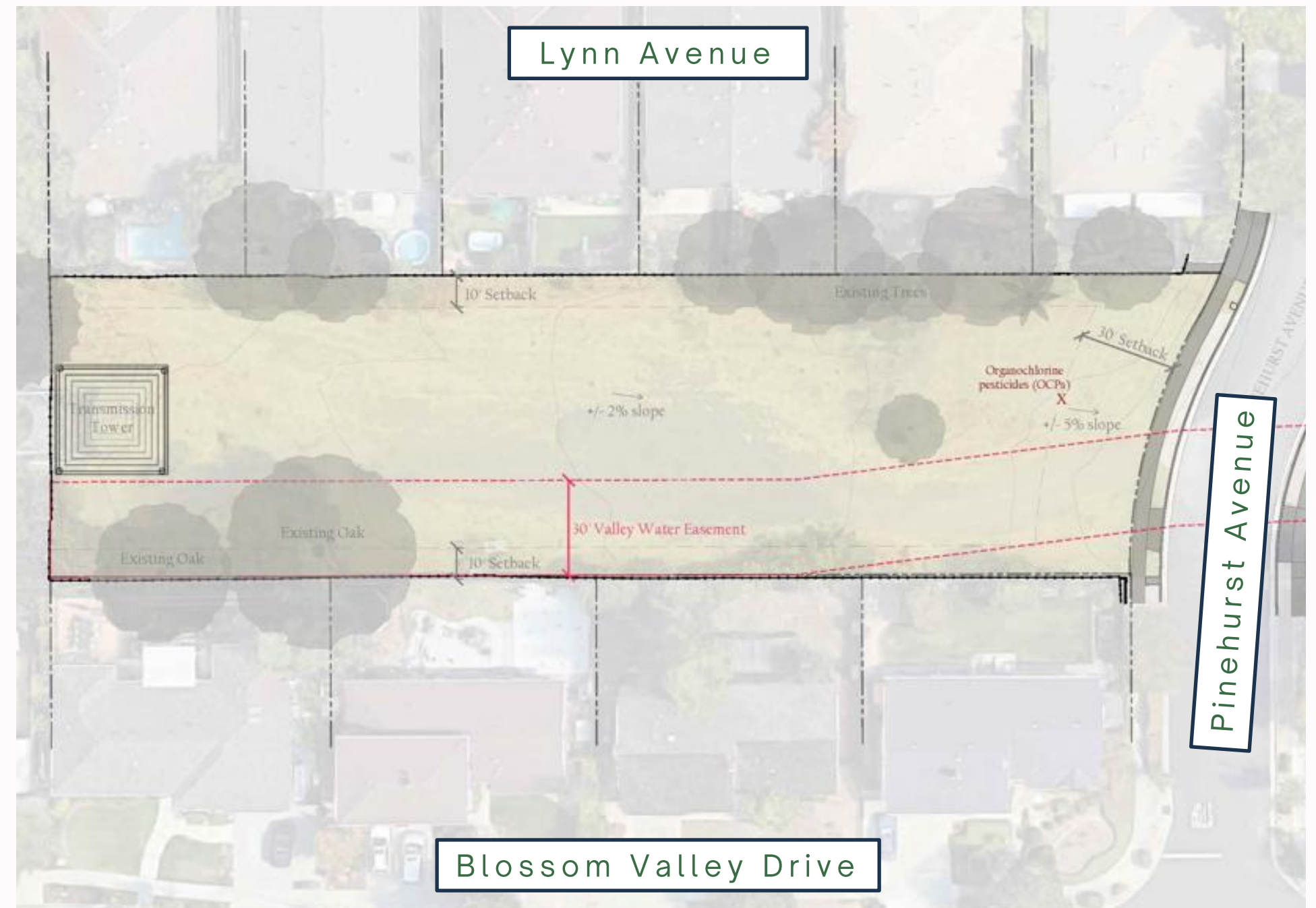
Improve mental
health and
dietary habits



Existing Conditions & Constraints

Pinehurst Community Garden

- The parcel is owned by the Town
- PG&E and Valley Water easements.
- No building structures allowed on top of Valley Water easement.
- No tall trees are permitted.
- Must provide maintenance vehicle access through location.
- Organochlorine Pesticides (OCPs) were discovered during an exploratory boring sample.

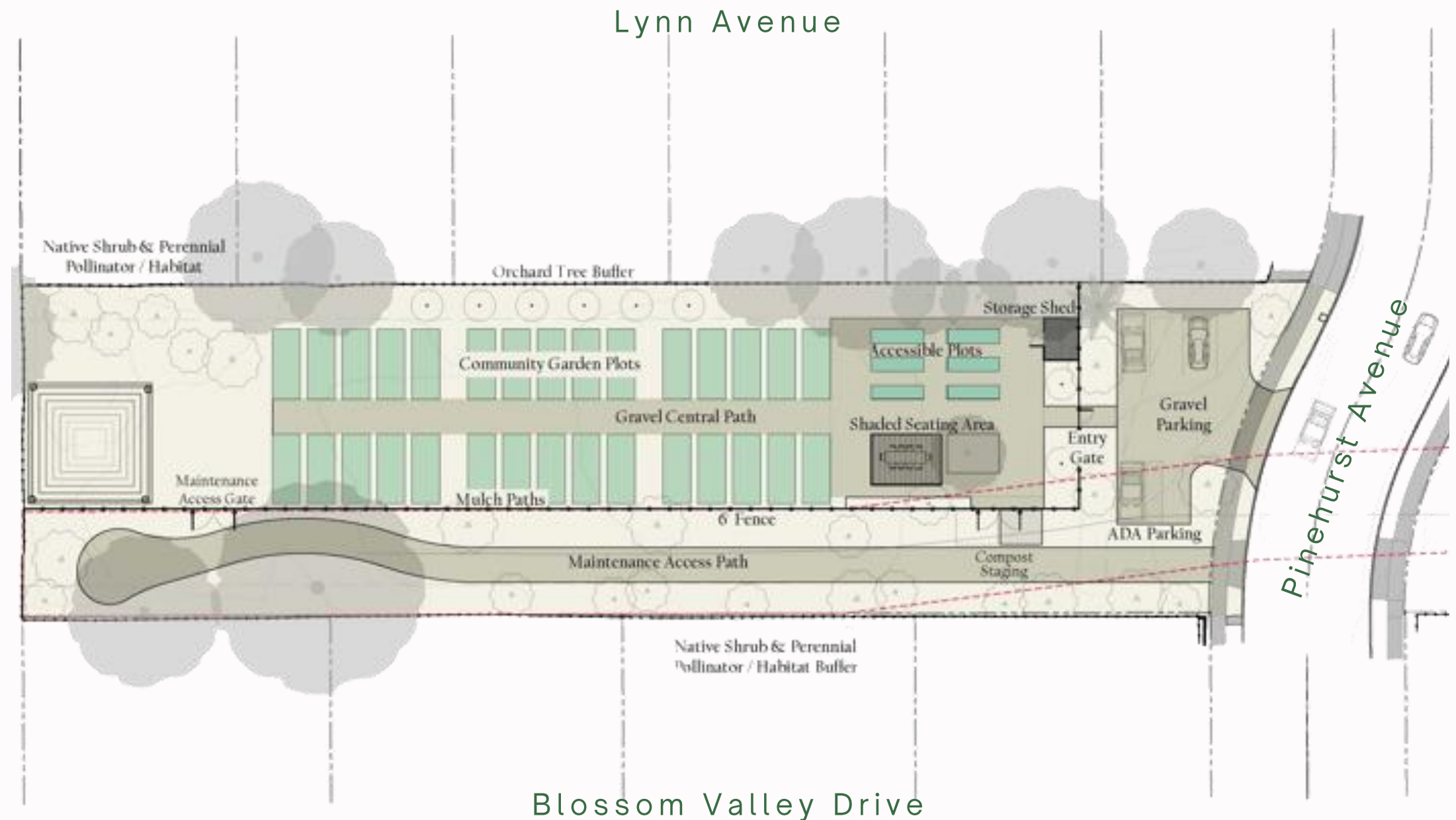


Concept Designs: Pinehurst Community Garden

Concept A

Site Features:

- 30 Plots (8' x 20') + 6 ADA Accessible Plots (4' x 15')
- Off-street gravel parking lot for 6 vehicles (2 ADA)
- Small orchard at North property line buffer
- Shaded seating
- Storage + compost

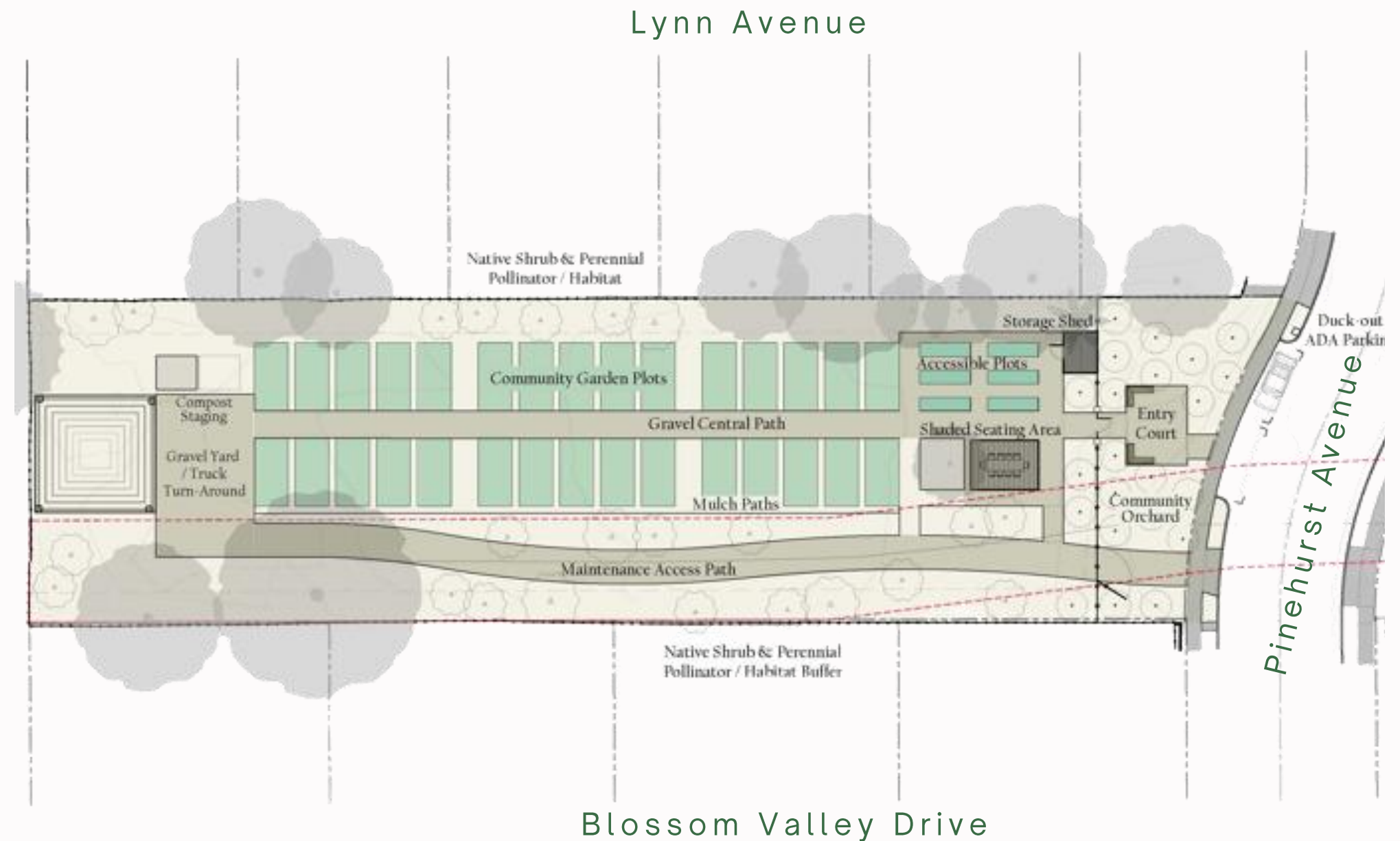


Concept Designs: Pinehurst Community Garden

Concept B

Site Features:

- 30 Plots (10' x 20') + 6 ADA Accessible Plots (4' x 15')
- No off street parking, provides duck-out for on 2 ADA spaces
- Enclosed easement with deliveries in rear
- Larger compost + storage
- Community Orchard

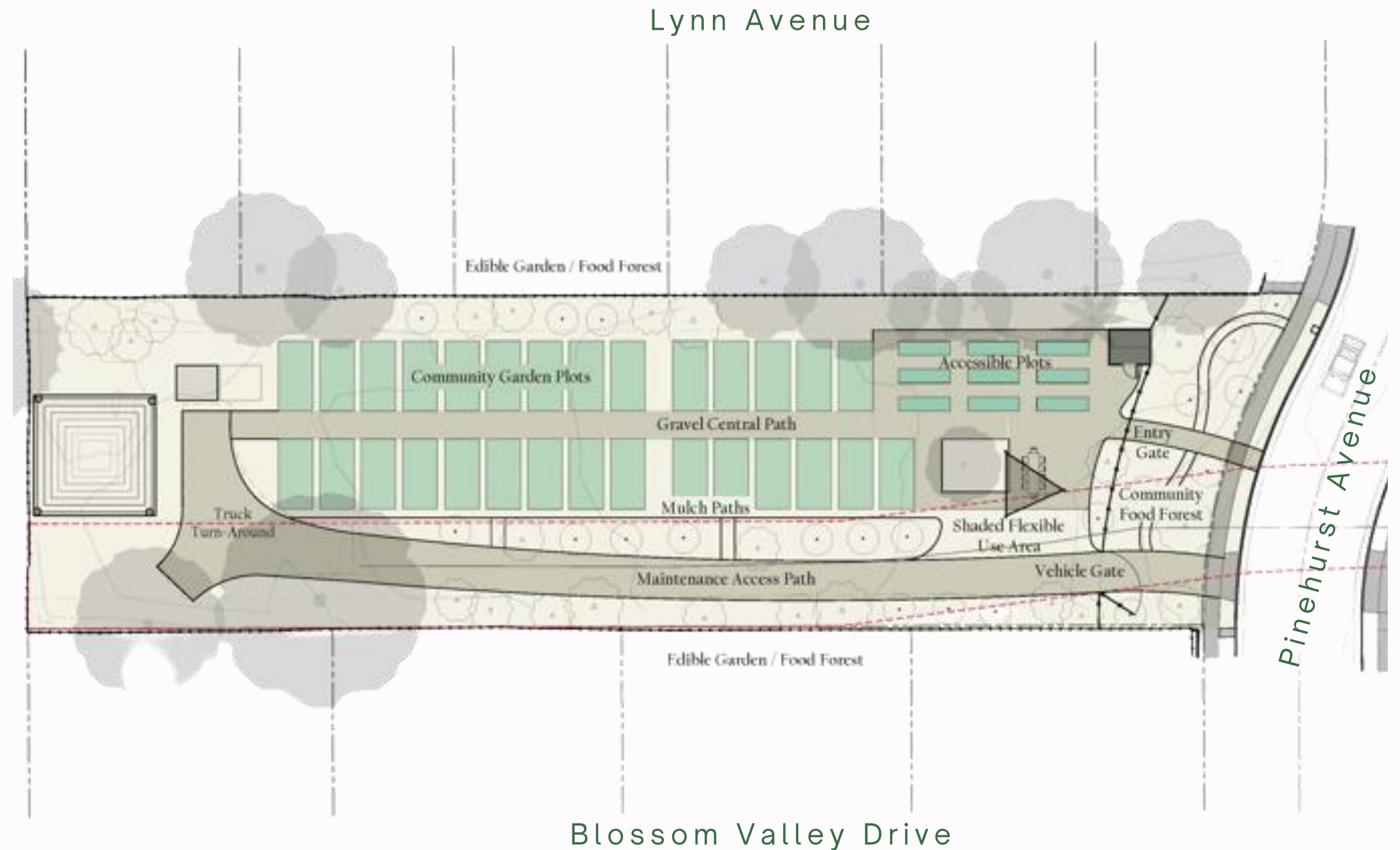


Concept Designs: Pinehurst Community Garden

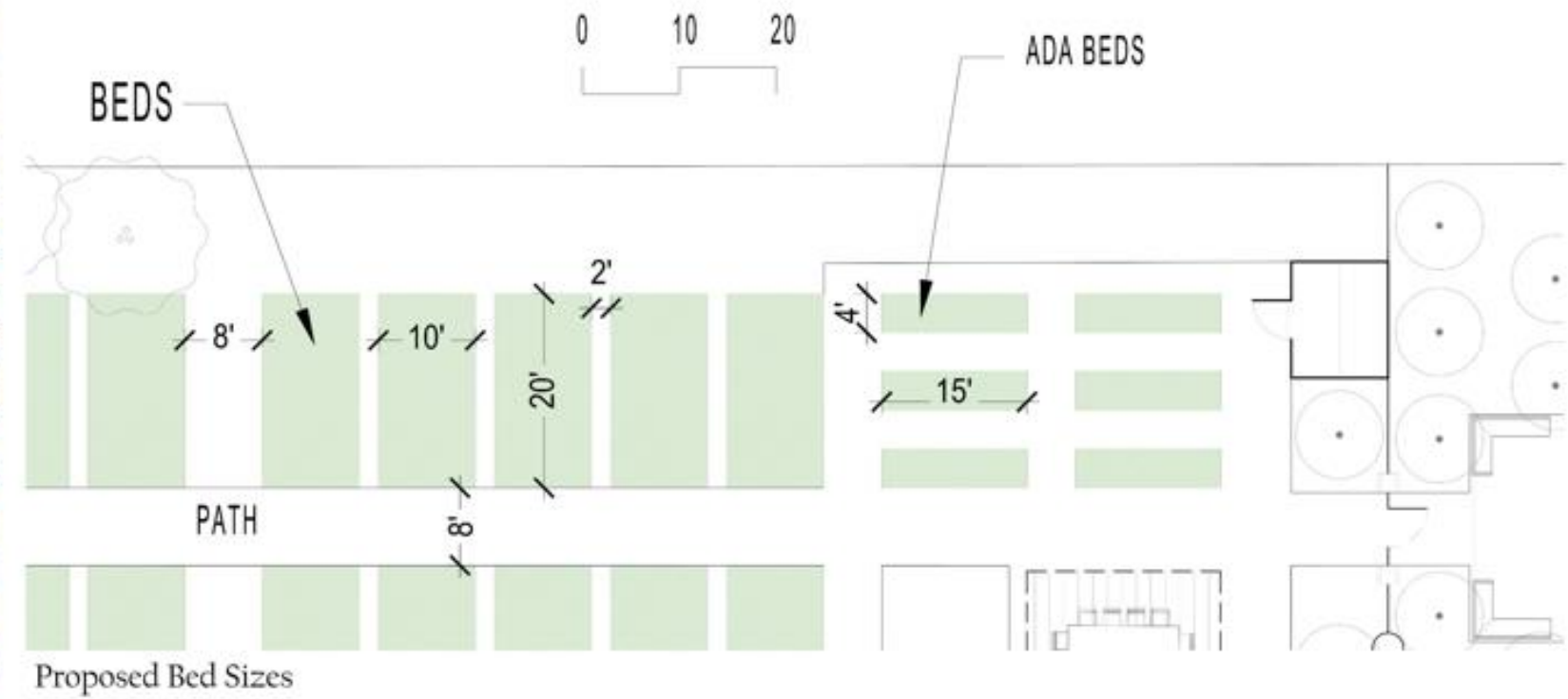
Concept C

Site Features:

- 29 Plots (10' x 20') + 9 ADA Accessible Plots (4' x 15')
- No designated parking
- Enhanced landscape at roadway
- Community Food Forest
- Enclosed easement with deliveries in rear



Garden Bed Example



Pinehurst Community Garden Image Board



Enhanced Site Entrance



Timber Frame Fence



Modern Fence



Simple Chainlink Fence



Fence Art



Shade Pergola



Shade Cloth



Art + Bulletin Board



Functional Art



Orchard with Heritage Fruits



Plant Identification Tags



Paths with Timber Headers



Interpretive Signs



Native planting



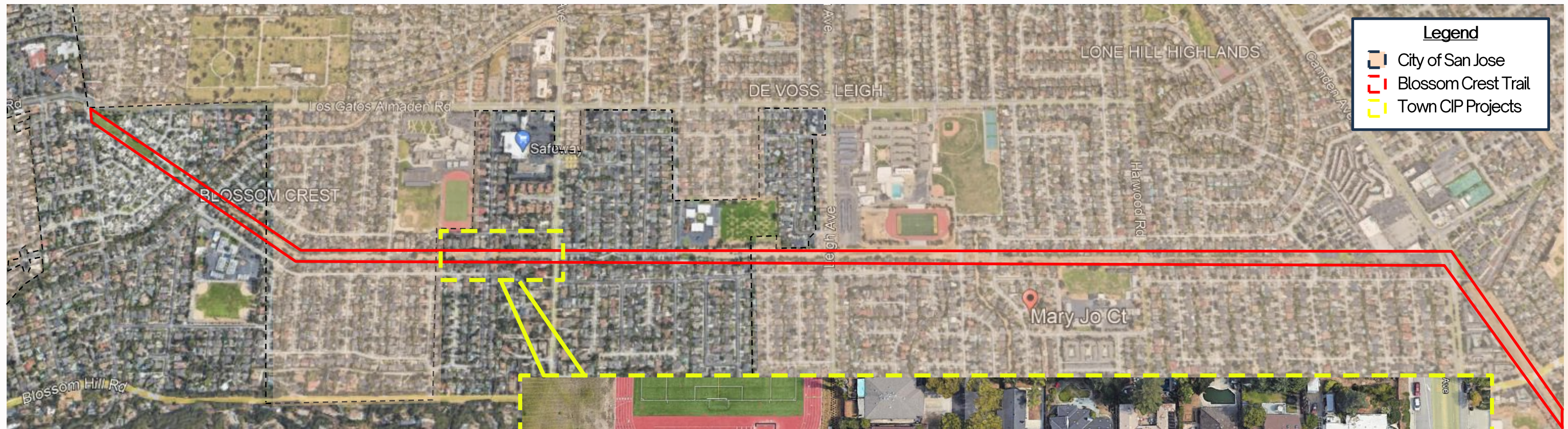
Pollinator Wildflower Meadow



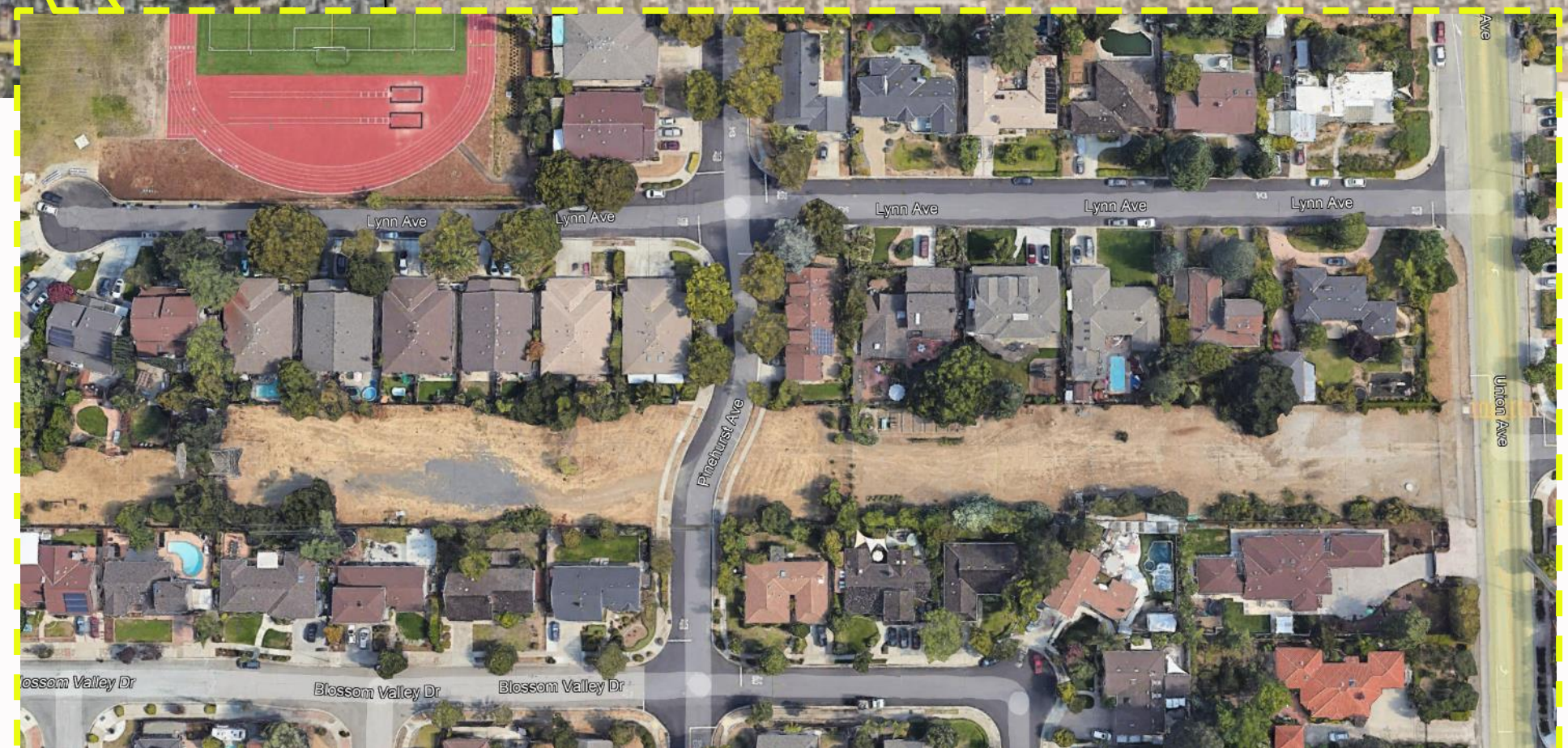
Trees Integrated into Plantings



Blossom Crest Trail System



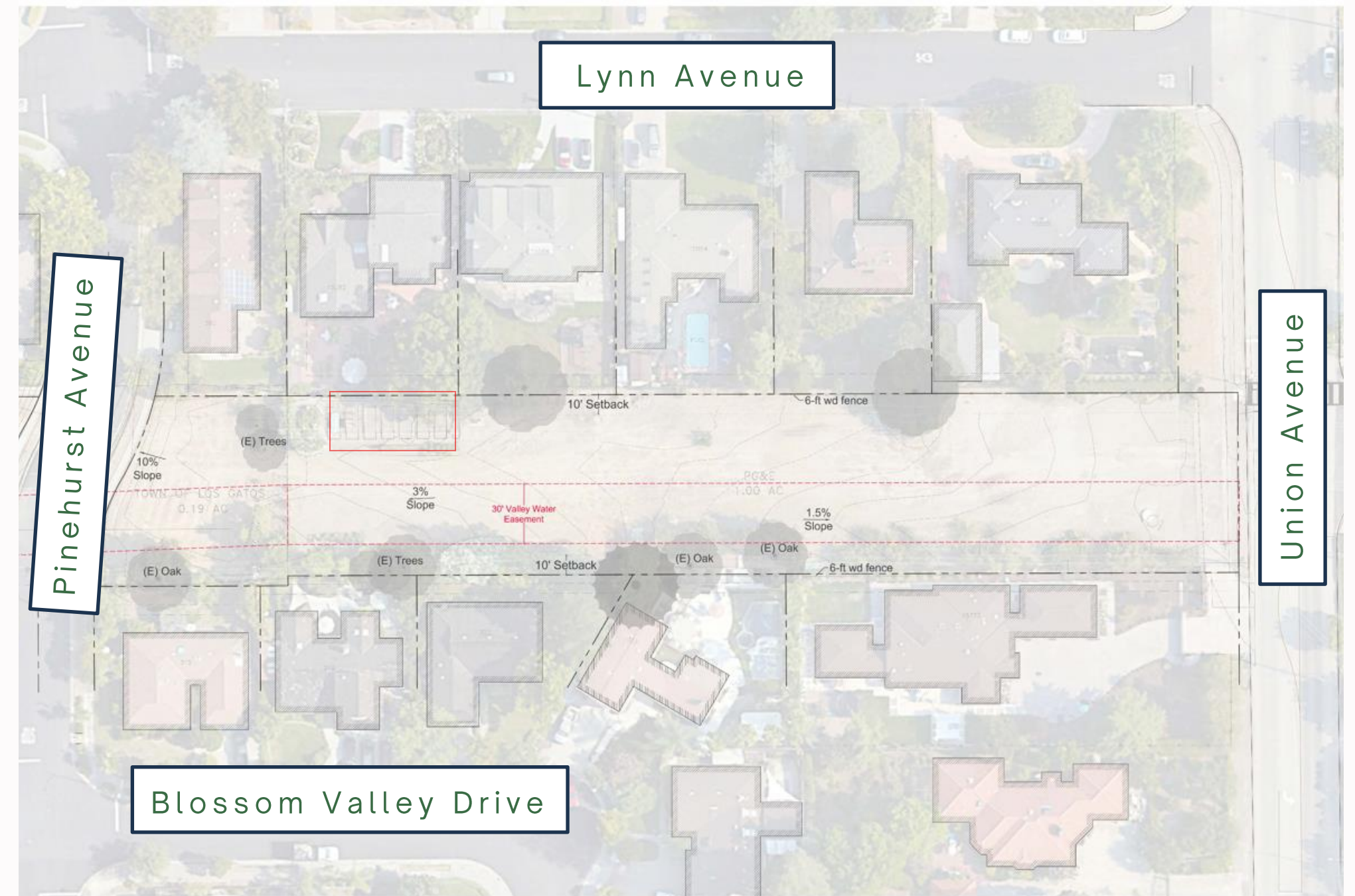
- In 2021, City of San Jose conducted a Feasibility Study for a pedestrian and bike path trail in the utility corridor within Blossom Crest Neighborhood



Existing Conditions & Constraints

Lynn Avenue Pedestrian Pathway

- Main parcel owned by PG&E and closed with a chain-link fence
- Valley Water easement limits use of site.
- No tall trees are permitted.
- Existing encroachment for residential garden.



Concept Designs: Lynn Avenue Pedestrian Pathway

Concept A

Site Features:

- Separated 6' unpaved pedestrian path and 12' asphalt class 1 path
- Sidewalk going north along Union follows existing alignment
- East entry has dual crossing at Union Avenue
- Pinehurst + Union show raised crossings



Concept Designs: Lynn Avenue Pedestrian Pathway

Concept B

Site Features:

- Separated and braided 6' unpaved pedestrian path and 12' asphalt Class 1 path
- Sidewalk going north along Union is re-aligned to provide more buffer
- Decorative crossing at Pinehurst + refuge island at Union crossing

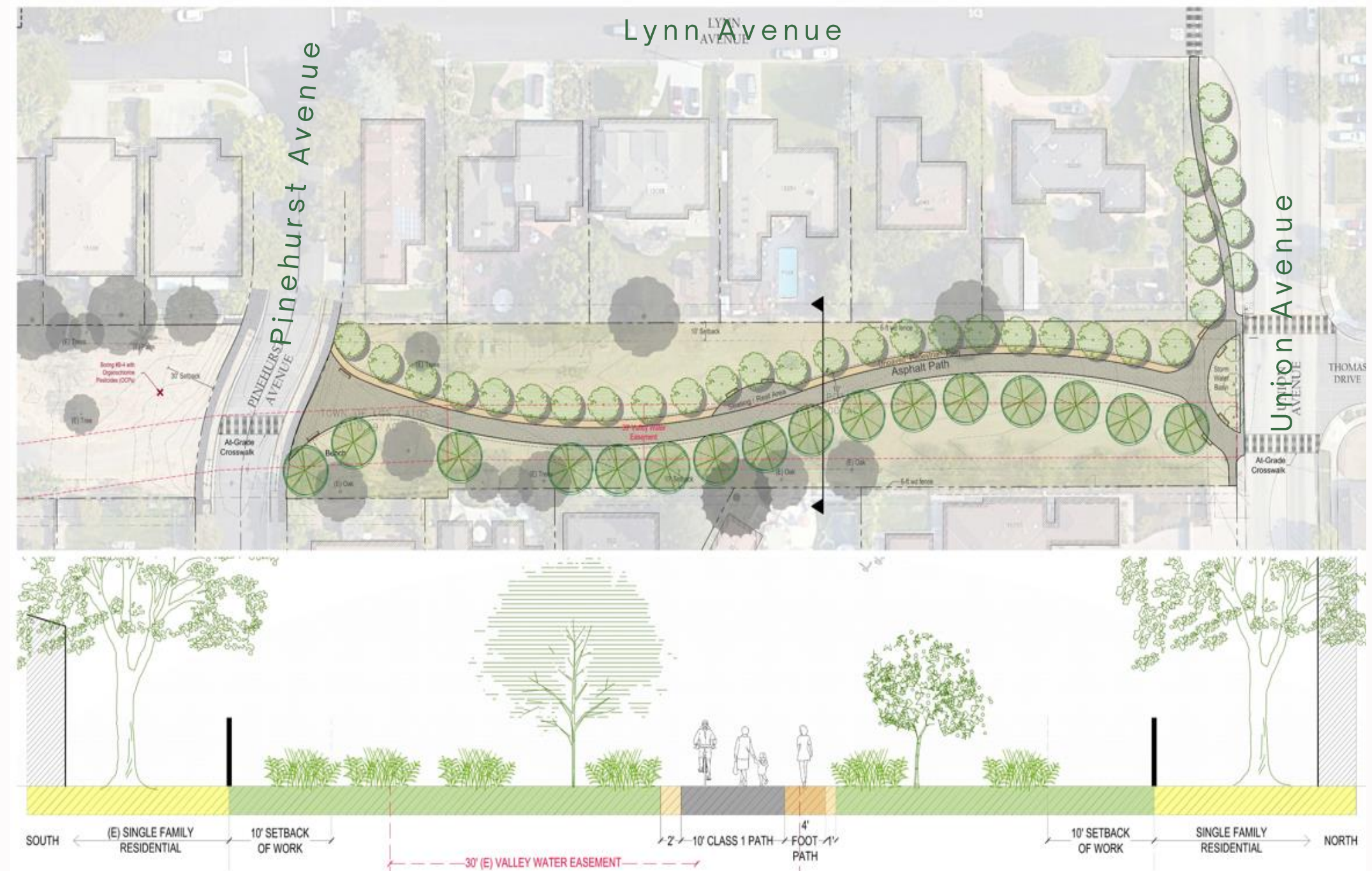


Concept Designs: Lynn Avenue Pedestrian Pathway

Concept C

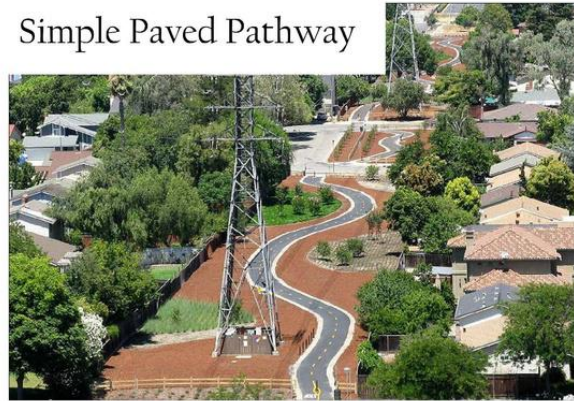
Site Features:

- Shared 4' unpaved pedestrian path and 10' asphalt Class 1 path
- Sidewalk going north along Union is curved, to mimic larger pathway
- Midway Rest Area
- Pinehurst + Union crosswalks are simple striped crossings



Lynn Avenue Pedestrian Pathway Image Board

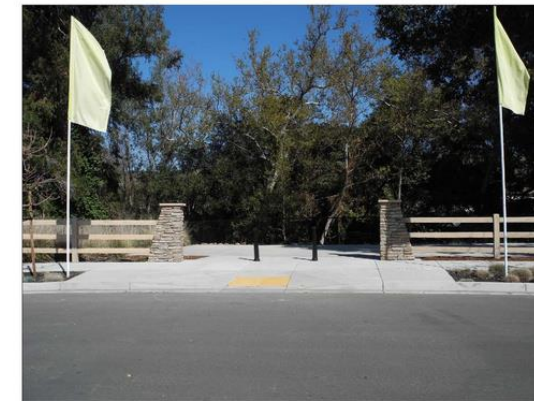
Simple Paved Pathway



Simple Pathway



Trailhead



Raised Crosswalk



Refuge Island



Basic Crosswalk



Decorative Crosswalk



Lynn Avenue Pedestrian Pathway Levels of Use Image Board

Level One



Simple Path



Simple Path



Simple Path



Simple Path

Level Two



Art Walk



Trail Markers



Lighting



Additional Seating



Interpretive Signs

Level Three



Fitness Equipment



Dog Run



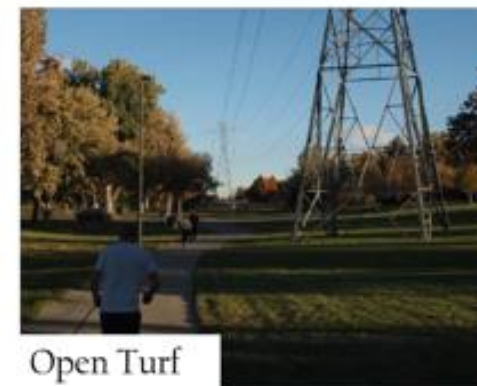
Birdwatching



Habitat



Sculpture



Open Turf



Play Area



Outdoor Classroom



Community Feedback

Town Council Meeting (September 19, 2023)

- Town Council was in support of aligning the projects together for planning
- Council priorities: ADA parking, fencing, loading zone, raised garden beds, shade, native plants for landscaping, and phasing to manage construction costs.

Arts and Parks Commission Joint Meeting & Community Meeting #1 (October 18, 2023)

- Parking issues and traffic congestion
- Crime and vandalism
- Privacy issues
- Amplified noise
- Lighting
- Pest and rodent issues
- Conflicts between bicyclists and pedestrians



Community Feedback

Parks and Sustainability Commission Meeting (December 4, 2023)

- In favor of off-street parking
- Supports slowing traffic on Union Avenue
- Accentuate nature/native plants
- Incorporate Art
- Provide seating areas



Community Feedback

Community Meeting #2 (December 7, 2023)

In Support of:

- Curved path option
- Off-street parking
- Americans with Disabilities Act (ADA) compliant garden beds
- Community orchard
- Safe path for students
- Interactive art opportunities
- Collaboration with Indigenous tribes
- Trees for privacy and shade
 - Keep the current tall shrubs



Community Feedback

Community Meeting #2 (December 7, 2023)

In Opposition to:

- Straight path option
- The financial limitation to renting a garden bed
- Midblock crosswalk at Pinehurst
- Pedestrian path width (should be same as bike)
- Several neighbors expressed opposition to both projects

Comments:

- Need for traffic calming on Lynn and Pinehurst
- Recommends a parking lot to accommodate school sport traffic and congestion instead of both projects
- Neighborhood expressed discontent of not being involved in the initial stages of this process



Community Feedback

E-mail Communications (October 2023 - current)

Concerns:

- Traffic and Parking
- Privacy
- Crime/Vandalism
- Safety
- Lighting
- Noise/Loitering
- Blocking view
- Littering/illegal dumping
- Decreased quality of life
- Received opposition of both projects



Next Steps

- Review parking analysis
- Discuss soccer and little league usage with Union Middle School
- Research easement information at both parcels
- Consultants to work on final designs incorporating community feedback
- Final concepts will be presented in a third community meeting in Spring 2024
- Final concepts and feedback will be presented to Town Council
- Final 35% design is anticipated to be complete by Summer 2024





Questions/Comments?

Town of Los Gatos
Parks & Public Works
ppw@losgatosca.gov
(408) 399-5770