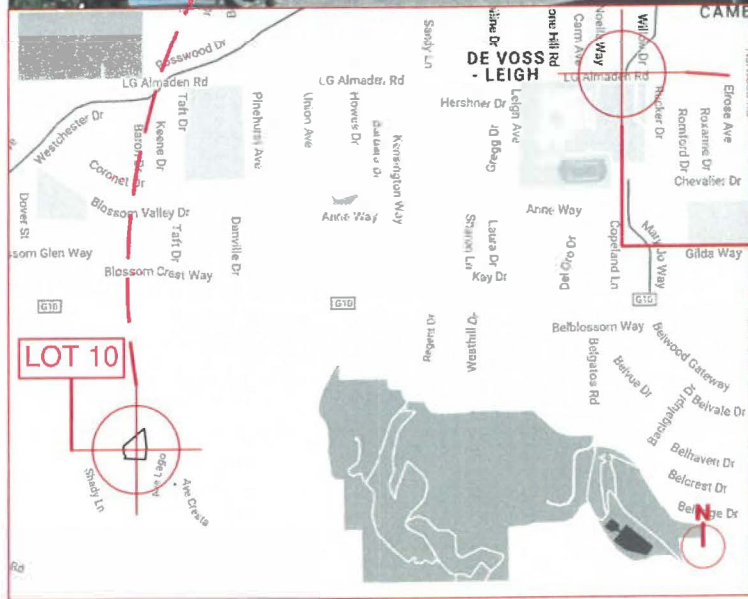




LOT 10

VIEWING PLATFORM
NW CORNER
LOS GATOS ALMADEN ROAD
& SELINDA WAY



17 VISIBILITY STUDY TAKEN FROM 50MM (NAKED EYE POINT OF VIEW)

NOTES

MHA
 MARK HORTON
 ARCHITECTURE
 135 SOUTH PARK
 SAN FRANCISCO
 CALIFORNIA
 94107
 U.S.A.
 T 415.543.3347
 F 415.543.1440
 www.mh-a.com

OWNERSHIP OF INSTRUMENTS OF SERVICE
 ALL REPORTS, PLANS, SPECIFICATIONS,
 COMPUTER FILES, FIELD DATA, NOTES AND
 OTHER DOCUMENTS AND INSTRUMENTS
 PREPARED BY THE CONSULTANT ARE
 THE PROPERTY OF THE CONSULTANT. THE
 CONSULTANT SHALL RETAIN ALL COMMON LAW,
 STATUTORY AND OTHER RESERVED RIGHTS,
 INCLUDING THE COPYRIGHT THEREON.

DOS JAIME GUZMAN
 ARQUITECTOS

VISOSO

15358 SANTELLA
 COURT
 LOS GATOS,
 CALIFORNIA
 95032

FOR
 PLANNING REVIEW RESUBMITTAL
 DATE
 11 OCTOBER 2017
 SCALE
 AS NOTED
 DRAWN BY
 JT
 JOB NUMBER
 15114
 REVISIONS

VISIBILITY STUDY

SKA.437



MARK HORTON
ARCHITECTURE
135 SOUTH PARK
SAN FRANCISCO
CALIFORNIA
9 4 1 0 7
U . S . A
T 415.543.3347
F 415.543.1440
www.mh-a.com

OWNERSHIP OF INSTRUMENTS OF SERVICE
ALL REPORTS, PLANS, SPECIFICATIONS,
COMPUTER FILES, FIELD DATA, NOTES AND
OTHER DOCUMENTS AND INSTRUMENTS
PREPARED BY THE CONSULTANT AS
INSTRUMENTS OF SERVICE SHALL REMAIN THE
PROPERTY OF THE CONSULTANT. THE
CONSULTANT SHALL RETAIN ALL COMMON LAW,
STATUTORY AND OTHER RESERVED RIGHTS,
INCLUDING THE COPYRIGHT THEREON.

DOS JAIME GUZMAN
ARQUITECTOS

VISOSO

**15358 SANTELLA
COURT**
LOS GATOS,
CALIFORNIA
95032

FOR
PLANNING REVIEW RESUBMITTAL
DATE
11 OCTOBER 2017
SCALE
AS NOTED
DRAWN BY
JT
JOB NUMBER
18114
REVISIONS

VISIBILITY STUDY

SKA.451



TREES IN FRONT OF LOT 10 PROPOSED HOUSE

410

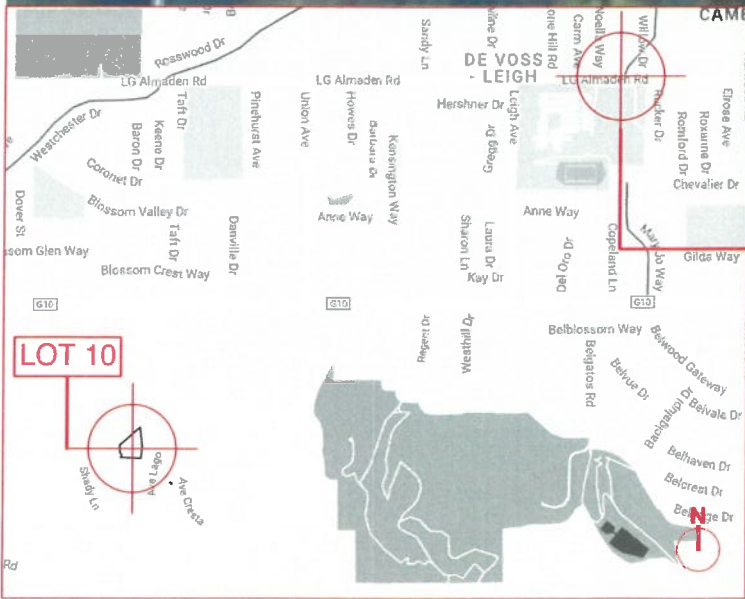
404

399

707

705

697



VIEWING PLATFORM NW CORNER LOS GATOS ALMADEN ROAD & SELINDA WAY

NOTES



MARK HORTON
ARCHITECTURE
135 SOUTH PARK
SAN FRANCISCO
CALIFORNIA
9 4 1 0 7
U . S . A
T 415.543.3347
F 415.543.1440
www.mh-a.com

OWNERSHIP OF INSTRUMENTS OF SERVICE
ALL REPORTS, PLANS, SPECIFICATIONS,
COMPUTER FILES, FIELD DATA, NOTES AND
OTHER DOCUMENTS AND INSTRUMENTS
PREPARED BY THE CONSULTANT, AS
INSTRUMENTS OF SERVICE SHALL REMAIN THE
PROPERTY OF THE CONSULTANT. THE
CONSULTANT SHALL RETAIN ALL COMMON LAW,
STATUTORY AND OTHER RESERVED RIGHTS,
INCLUDING THE COPYRIGHT THEREIN.

DOS JAIME GUZMAN
ARQUITECTOS

VISOSO

15358 SANTELLA
COURT
LOS GATOS,
CALIFORNIA
95032

FOR
PLANNING REVIEW RESUBMITTAL
DATE
11 OCTOBER 2017
SCALE
AS NOTED
DRAWN BY
JT
JOB NUMBER
18114
REVISIONS

VISIBILITY STUDY

SKA.452

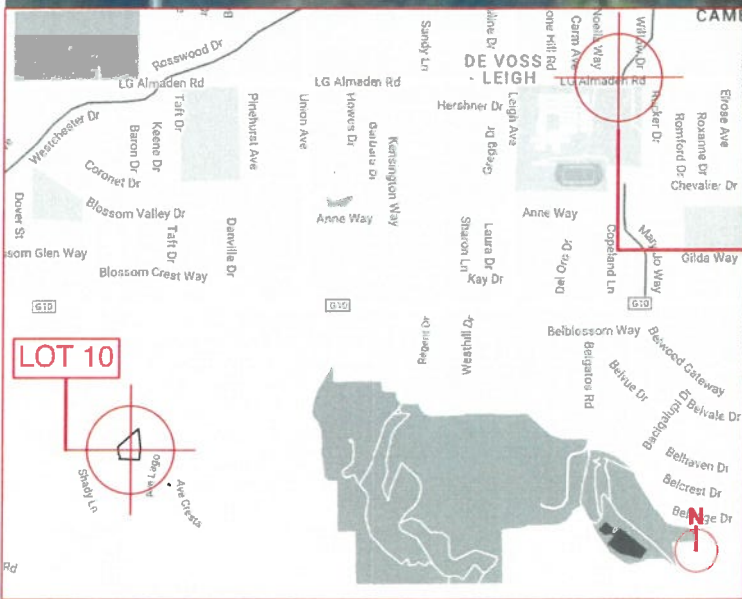


TREES IN FRONT OF LOT 10 PROPOSED HOUSE

HIDDEN BY VEGETATION

NOT HIDDEN BY VEGETATION

VIEWING PLATFORM NW CORNER LOS GATOS ALMADEN ROAD & SELINDA WAY



CALCULATIONS

VISIBLE AREA: 606.6 SF
 TOTAL AREA: 2,506.7 SF
 = 24.2% SF VISIBLE

MHA
 MARK HORTON
 ARCHITECTURE
 135 SOUTH PARK
 SAN FRANCISCO
 CALIFORNIA
 9 4 1 0 7
 U . S . A
 T 415.543.3347
 F 415.543.1440
 www.mh-a.com

OWNERSHIP OF INSTRUMENTS OF SERVICE ALL REPORTS, PLANS, SPECIFICATIONS, COMPUTED FILES, FIELD DATA, NOTES AND OTHER DOCUMENTS AND INSTRUMENTS PREPARED BY THE CONSULTANT AS INSTRUMENTS OF SERVICE SHALL REMAIN THE PROPERTY OF THE CONSULTANT. THE CONSULTANT SHALL RETAIN ALL COMMON LAW, STATUTORY AND OTHER RESERVED RIGHTS, INCLUDING THE COPYRIGHT THEREOF.

DOS JAIME GUZMAN
 ARQUITECTOS

VISOSO
 15358 SANTELLA COURT
 LOS GATOS, CALIFORNIA
 95032

FOR PLANNING REVIEW RESUBMITTAL
 DATE 11 OCTOBER 2017
 SCALE AS NOTED
 DRAWN BY JT
 JOB NUMBER 16114
 REVISIONS

VISIBILITY STUDY CALCULATIONS

SKA.453



CALCULATIONS



**MARK HORTON
ARCHITECTURE**
135 SOUTH PARK
SAN FRANCISCO
CALIFORNIA
9 4 1 0 7
U . S . A
T 415.543.3347
F 415.543.1440
www.mh-a.com

OWNERSHIP OF INSTRUMENTS OF SERVICE
ALL REPORTS, PLANS, SPECIFICATIONS,
COMPUTER FILES, FIELD DATA, NOTES AND
OTHER DOCUMENTS AND INSTRUMENTS
PREPARED BY THE CONSULTANT, AS
INSTRUMENTS OF SERVICE SHALL REMAIN THE
PROPERTY OF THE CONSULTANT. THE
CONSULTANT SHALL RETAIN ALL COMMON LAW,
STATUTORY AND OTHER RESERVED RIGHTS,
INCLUDING THE COPYRIGHT THEREIN.

**DOS JAIME GUZMAN
ARQUITECTOS**

VISOSO

**15358 SANTELLA
COURT**
LOS GATOS,
CALIFORNIA
95032

FOR
PLANNING REVIEW RESUBMITTAL
DATE
11 OCTOBER 2017
SCALE
AS NOTED
DRAWN BY
DH / JT
JOB NUMBER
15114
REVISIONS

VISIBILITY STUDY

SKA.454



CALCULATIONS

MHA
 MARK HORTON
 ARCHITECTURE
 135 SOUTH PARK
 SAN FRANCISCO
 CALIFORNIA
 9 4 1 0 7
 U . S . A
 T 415.543.3347
 F 415.543.1440
 www.mh-a.com

OWNERSHIP OF INSTRUMENTS OF SERVICE
 ALL REPORTS, PLANS, SPECIFICATIONS,
 COMPUTER FILES, FIELD DATA, NOTES AND
 OTHER DOCUMENTS AND INSTRUMENTS
 PREPARED BY THE CONSULTANT AS
 INSTRUMENTS OF SERVICE SHALL REMAIN THE
 PROPERTY OF THE CONSULTANT. THE
 CONSULTANT SHALL RETAIN ALL COMMON LAW,
 STATUTORY AND OTHER RESERVED RIGHTS,
 INCLUDING THE COPYRIGHT THEREON.

DOS JAIME GUZMAN
 ARQUITECTOS

VISOSO
**15358 SANTELLA
 COURT**
 LOS GATOS,
 CALIFORNIA
 95032

FOR
 PLANNING REVIEW RESUBMITTAL
 DATE 11 OCTOBER 2017
 SCALE AS NOTED
 AS NOTED
 DRAWN BY DH / JT
 JOB NUMBER 18114
 REVISIONS

VISIBILITY STUDY

SKA.455



MARK HORTON
ARCHITECTURE
135 SOUTH PARK
SAN FRANCISCO
CALIFORNIA
9 4 1 0 7
U . S . A
T 415.543.3347
F 415.543.1440
www.mh-a.com

OWNERSHIP OF INSTRUMENTS OF SERVICE
ALL REPORTS, PLANS, SPECIFICATIONS,
CONTRACTS, FIELD DATA, NOTES AND
OTHER DOCUMENTS AND INSTRUMENTS
PREPARED BY THE CONSULTANT AS
INSTRUMENTS OF SERVICE SHALL REMAIN THE
PROPERTY OF THE CONSULTANT. THE
CONSULTANT SHALL RETAIN ALL COMMON LAW,
STATUTORY AND OTHER RESERVED RIGHTS,
INCLUDING THE COPYRIGHT THEREON.

DOS JAIME GUZMAN
ARQUITECTOS

VISOSO

**15358 SANTELLA
COURT**
LOS GATOS,
CALIFORNIA
95032

FOR
PLANNING REVIEW RESUBMITTAL
DATE
11 OCTOBER 2017
SCALE
AS NOTED
DRAWN BY
DH / JT
JOB NUMBER
16114
REVISIONS

VISIBILITY STUDY

SKA.456





LOT 9
UNBUILT PARCEL
FUTURE PRIVATE SINGLE
FAMILY RESIDENCE

LOT 11
(E) PRIVATE SINGLE
FAMILY RESIDENCE

- KEY NOTES**
- 10'-0" PRIVATE SANITARY SEWER EASEMENT FOR LOT 9 AND PRIVATE SEWER SERVICE.
 - EXISTING 5'-0" PUBLIC UTILITY EASEMENT (PUE)
 - LOCATION OF PUBLIC STORM DRAIN HAS NOT BEEN CONFIRMED. THE STORM DRAIN PIPE IS MOST LIKELY NOT WITHIN THE 10'-0" EASEMENT.

TREES SHOWN IN VISUAL STUDY

TREES 399, 404, 410, 697, 705, 707 ARE LABELED BY THE ARBORIST AND ARE SHOWN COVERING THE HOUSE

TREES W-14", X-32", Y-18", Z-18" ARE TREES NOT SHOWN ON THE ARBORIST'S REPORT AND NOT ORIGINALLY LABELED BUT ARE SHOWN COVERING THE HOUSE

*NOTE: THE SIZE OF THE TREE (TRUNK DIAMETER, HEIGHT AND CANOPY DIAMETER) IS APPROXIMATE BASED ON SIMILAR CANOPY SIZE TREES THAT ARE LABELED BY THE ARBORIST ON THE SITE PLAN AND AN IMAGE FROM GOOGLE EARTH.



**MARK HORTON
ARCHITECTURE**
135 SOUTH PARK
SAN FRANCISCO
CALIFORNIA
9 4 1 0 7
U . S . A
T 415.543.3347
F 415.543.1440
www.mh-a.com

OWNERSHIP OF INSTRUMENTS OF SERVICE ALL REPORTS, PLANS, SPECIFICATIONS, COMPUTER FILES, FIELD DATA, NOTES AND OTHER DOCUMENTS AND INSTRUMENTS PREPARED BY THE CONSULTANT AS INSTRUMENTS OF SERVICE SHALL REMAIN THE PROPERTY OF THE CONSULTANT. THE CONSULTANT SHALL RETAIN ALL COMMON LAW, STATUTORY AND OTHER RESERVED RIGHTS, INCLUDING THE COPYRIGHT THEREON.

**DOS JAIME GUZMAN
ARQUITECTOS**

VISOSO

**15358 SANTELLA
COURT**
LOS GATOS,
CALIFORNIA
95032

FOR
PLANNING REVIEW RESUBMITTAL
DATE
11 OCTOBER 2017
SCALE
AS NOTED
DRAWN BY
JT
JOB NUMBER
16114
REVISIONS

SITE PLAN LEGEND

SAVE TREE	DEBATABLE
TREE NOT IN ARBORIST REPORT	REMOVE TREE

DIAMETER OF TREE TRUNKS ARE LABELED AND SHOWN ON PLAN

**SITE PLAN
VISIBILITY ANALYSIS**

SKA.473