

**Performance Statement:** West 9th St.**03K****Purpose Statement:**

Deteriorated roadway resulting in reduced access.

**Work to be performed:**

Reconstruct approximately one thousand five hundred twenty linear feet (1,520 LF) to include base material, prime coat, HMA surface, one thousand eight hundred ninety-one linear feet (1,891 LF) of curb and gutter replacement, and all associated appurtenances.

**Updated Location:**

West 9th Street. This location is more fully described in Figure A1 below, which is incorporated herein. In the event of a conflict between this description and Figure A1, Figure A1 controls.

**Total Beneficiaries for this Activity:** **Total Low/Moderate Income Beneficiaries for this Activity:** **LMI Ratio:**

133

97

72.93%

**Performance Statement:** West 5<sup>th</sup> St.**03K****Purpose Statement:**

Deteriorated roadway resulting in reduced access.

**Work to be performed:**

Reconstruct approximately three hundred seventy-two linear feet (372 LF) to include base material, prime coat, HMA surface, three hundred thirty-seven linear feet (337 LF) of curb and gutter replacement, and all associated appurtenances.

**Updated Location:**

West 5th Street. This location is more fully described in Figure A1 below, which is incorporated herein. In the event of a conflict between this description and Figure A1, Figure A1 controls.

**Total Beneficiaries for this Activity:    Total Low/Moderate Income Beneficiaries for this Activity:    LMI Ratio:**

46

42

91.30%

**Performance Statement:** West 7<sup>th</sup> St.**03K****Purpose Statement:**

Deteriorated roadway resulting in reduced access.

**Work to be performed:**

Reconstruct approximately four hundred twenty-one linear feet (421 LF) to include base material, prime coat, HMAC surface, five hundred forty-five linear feet (545 LF) of curb and gutter replacement, and all associated appurtenances.

**Updated Location:**

West 7th Street. This location is more fully described in Figure A1 below, which is incorporated herein. In the event of a conflict between this description and Figure A1, Figure A1 controls.

**Total Beneficiaries for this Activity:** **Total Low/Moderate Income Beneficiaries for this Activity:** **LMI Ratio:**

37

28

75.68%

**Performance Statement:**    **West 1st St.**                      **03K**

**Purpose Statement:**

Deteriorated roadway resulting in reduced access.

**Work to be performed:**

Reconstruct approximately four hundred thirty-six linear feet (436 LF) to include base material, prime coat, HMAC surface, nine hundred twenty-four linear feet (924 LF) of curb and gutter replacement, and all associated appurtenances.

**Updated Location:**

West 1st Street. This location is more fully described in Figure A1 below, which is incorporated herein. In the event of a conflict between this description and Figure A1, Figure A1 controls.

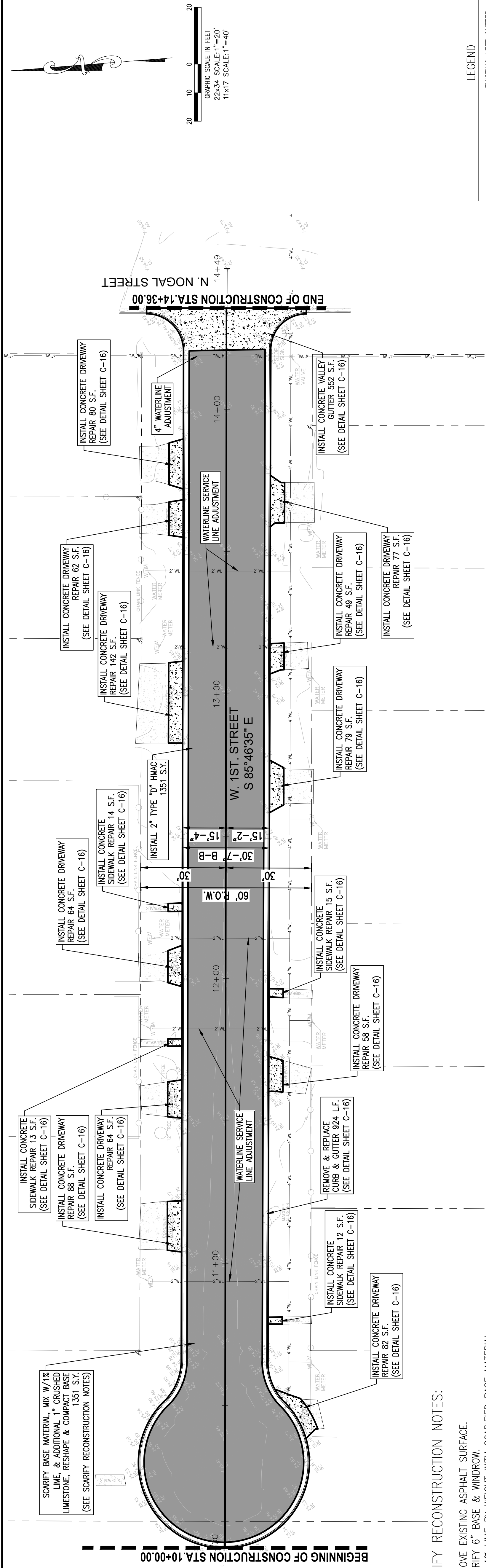
**Total Beneficiaries for this Activity:**    **Total Low/Moderate Income Beneficiaries for this Activity:**    **LMI Ratio:**

31

25

80.65%

100% SUBMITTAL



1. REMOVE EXISTING ASPHALT SURFACE.
2. SCARIFY 6" BASE & WINDOW.
3. MIX 1% LIME BY WEIGHT WITH SCARIFIED BASE MATERIAL.
4. WINDOW 1/2" BASE MATERIAL TO 4. ONE SIDE INSTALL
5. REPEAT STEP 4 TO OPPOSITE SIDE.
6. SPREAD & COMPACT BASE MATERIAL TO 98% STANDARD
7. PROCTOR DENSITY AT +2% TO -1% OPTIMUM MOISTURE.
8. INSTALL 2" TYPE "D" HMAAC.
9. 3/4" PLASTIC TUBING W/ COPPER TUBING OUTER DIAMETER

1. NOTICE: THE CONTRACTOR SHALL FIELD VERIFY THE LOCATION(S) AND ELEVATION(S) OF ALL EXISTING UTILITIES PRIOR TO CONSTRUCTION AND IS RESPONSIBLE FOR COSTS INCURRED BY PROCEEDING WITH ELEVATION(S) OF EXISTING UTILITIES THAT DIFFER FROM THOSE PRESENTED ON THE DRAWINGS.

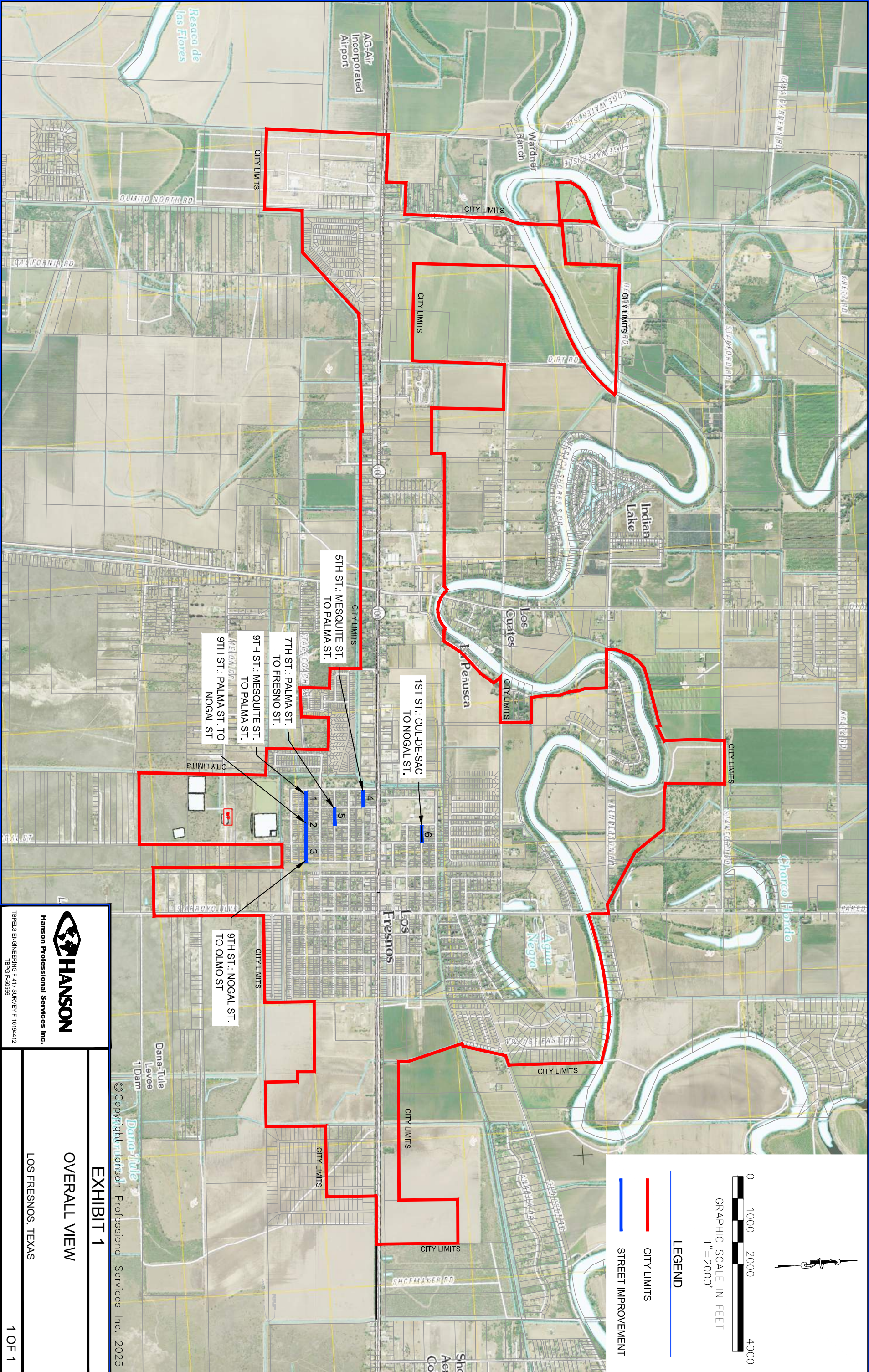
**1ST STREET**

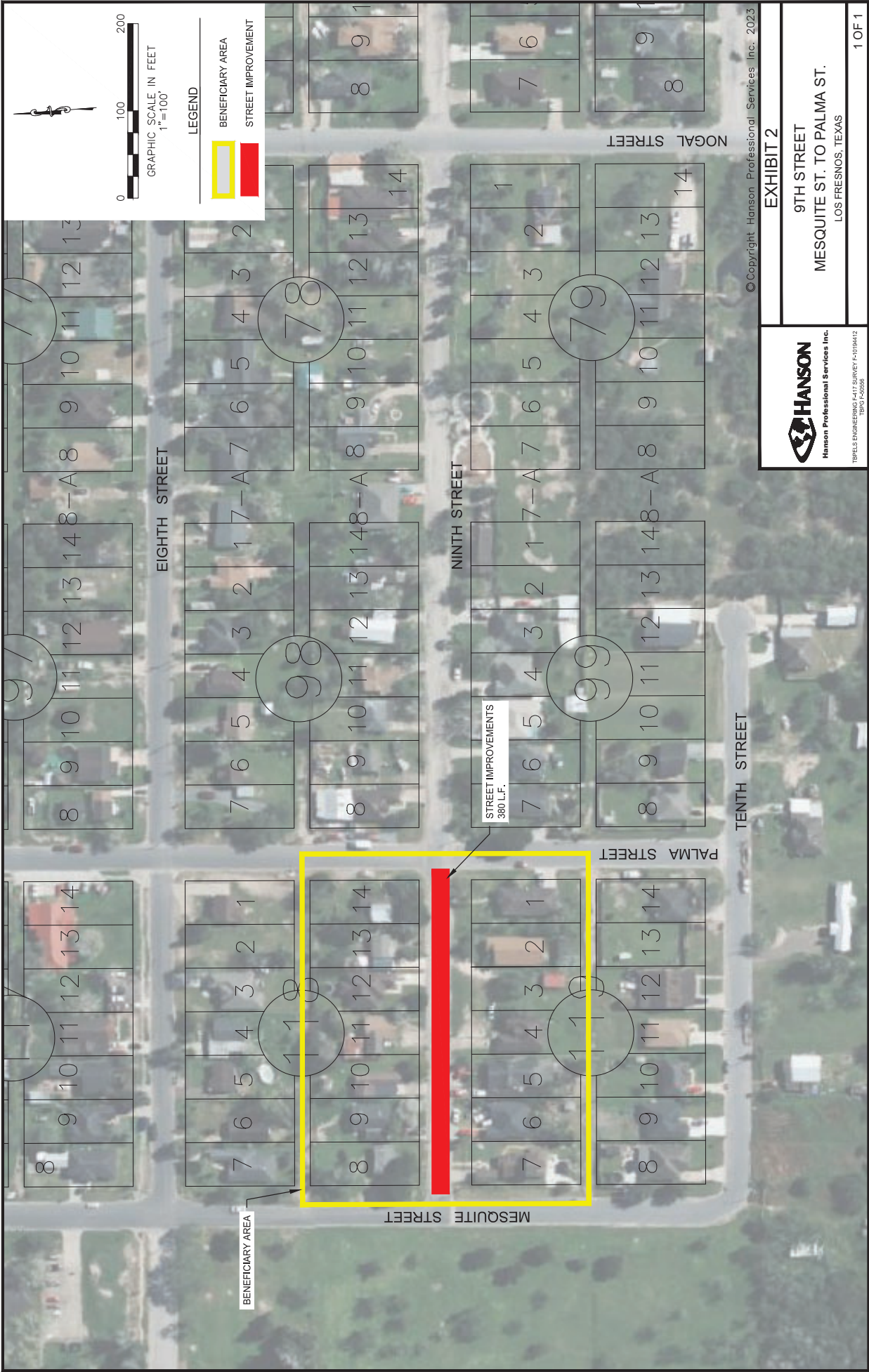
CHANGE ORDER NO. 2 QUANTITIES			
	ITEM	UNIT	QTY.
	REMOVE EXISTING ASPHALT SURFACE		
	SCAFFY BASE MATERIAL, W/ 1/2" LIME, & ADDITIONAL	SY	1351
	1" CRUSHED LIMESTONE, RESHAPE & COMPACT BASE	SY	1351
	REMOVE & REPLACE CURB & GUTTER	LF	924
	PRIME COAT MC-30	GAL	271
	INSTALL 2" TYPE "D" HWAC	SY	1351
	ADDITIONAL CRUSHED LIMESTONE	SY	1351
	CONCRETE DRIVEWAY REPAIR	SY	846
	CONCRETE SIDEWALK REPAIR	SF	54
	CONCRETE VALLEY GUTTER	SF	552
	4" WATERLINE ADJUSTMENT	EA	1
	WATER SERVICE LINE ADJUSTMENT (SEE NOTE 6)	EA	5

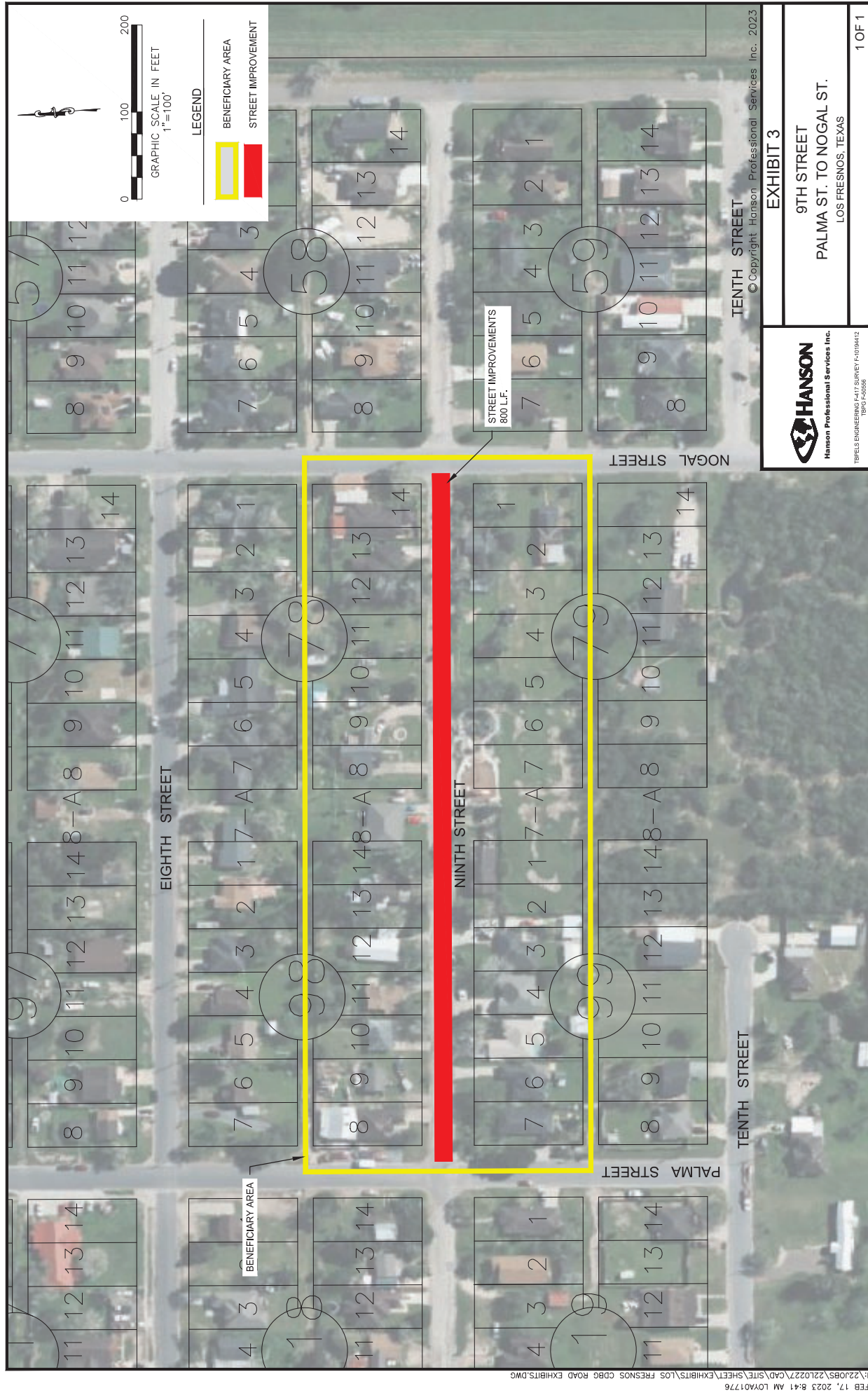
Station	Prop. Elev.	Ex. Elev.	Station	Prop. Elev.	Ex. Elev.
30			30		
28			28		
26			26		
24			24		
22			22		
20			20		

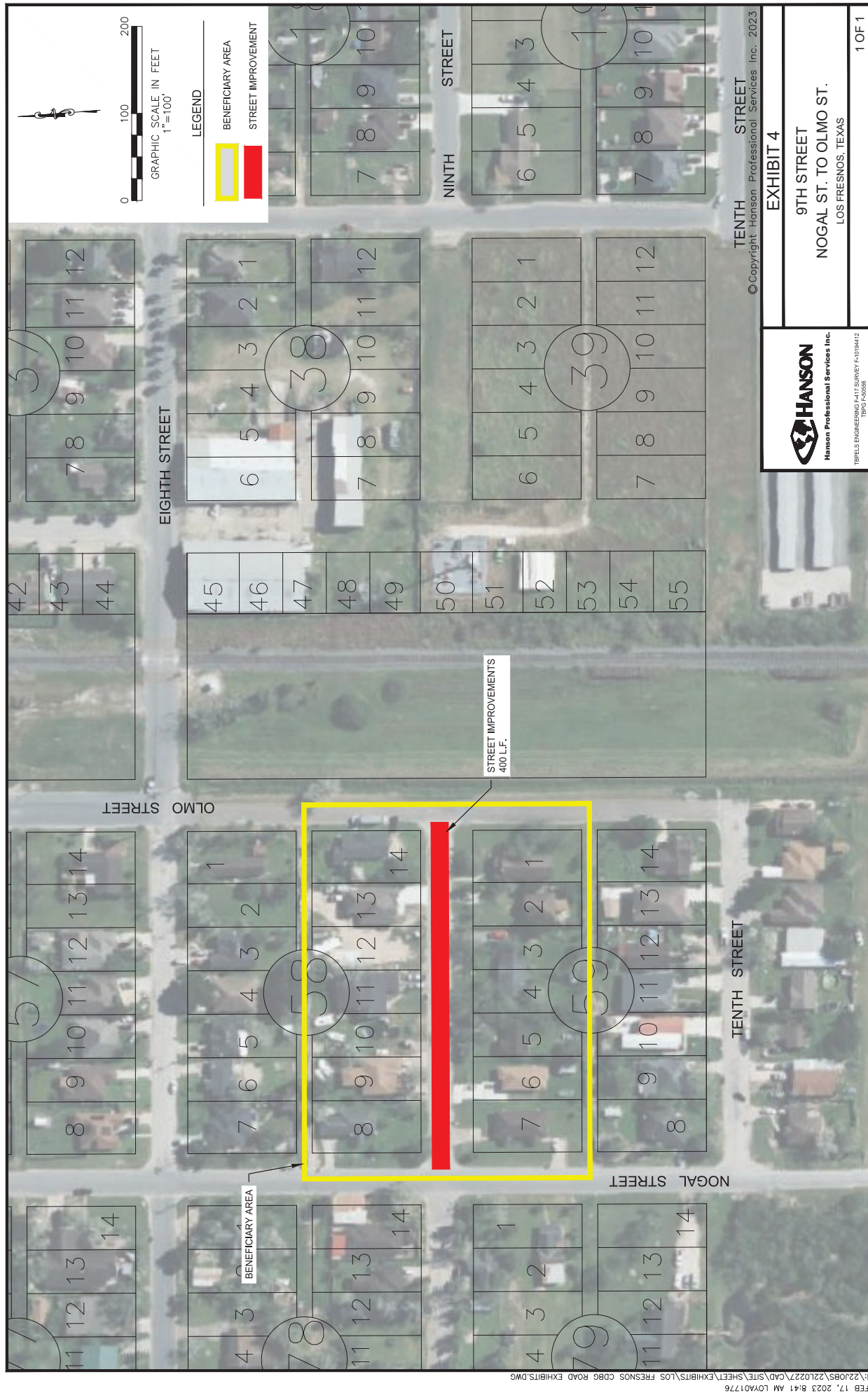
  

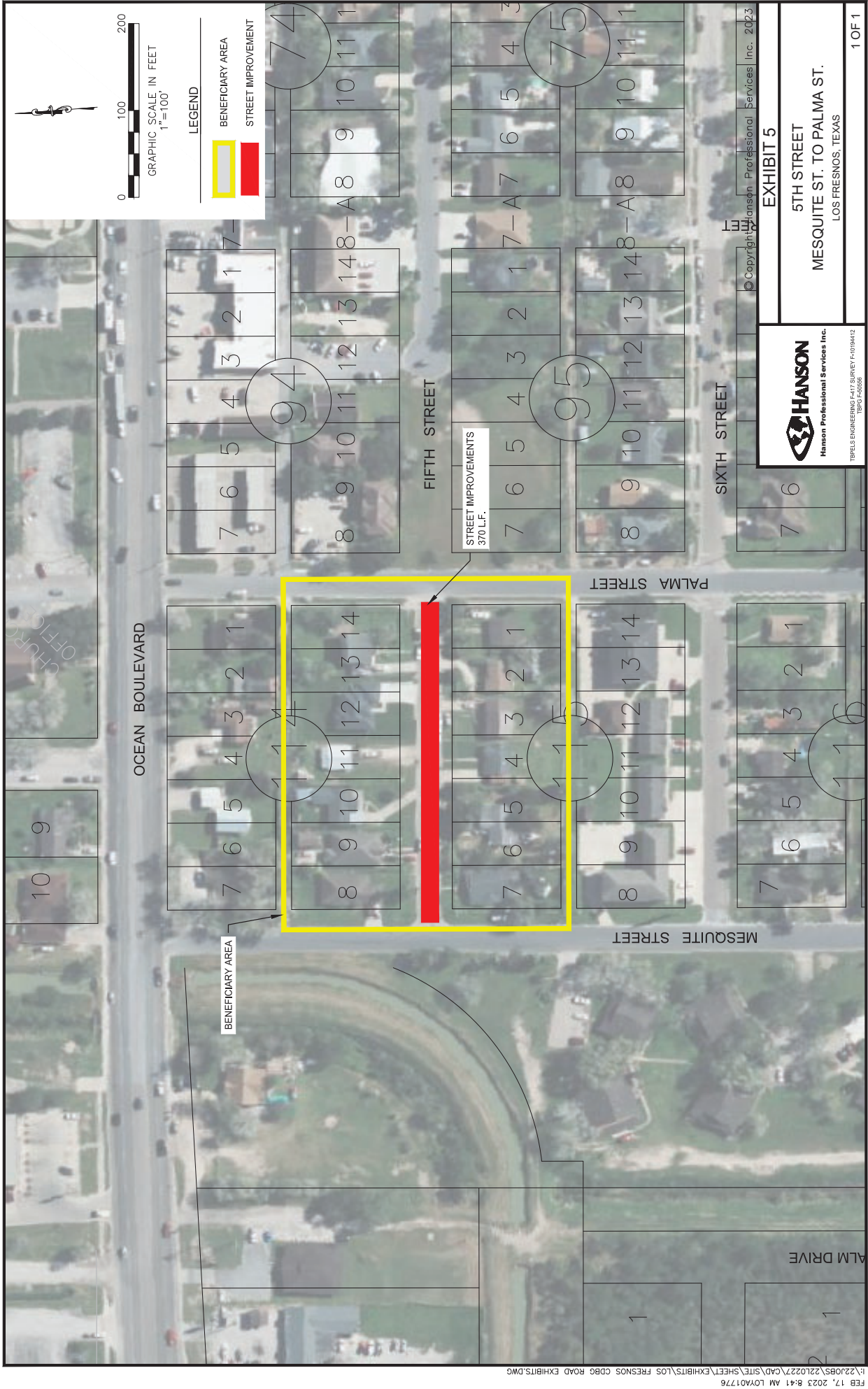
Station	Prop. Elev.	Ex. Elev.	Station	Prop. Elev.	Ex. Elev.
30			30		
28			28		
26			26		
24			24		
22			22		
20			20		














**HANSON**  
Hanson Professional Services Inc.

**EXHIBIT 5**

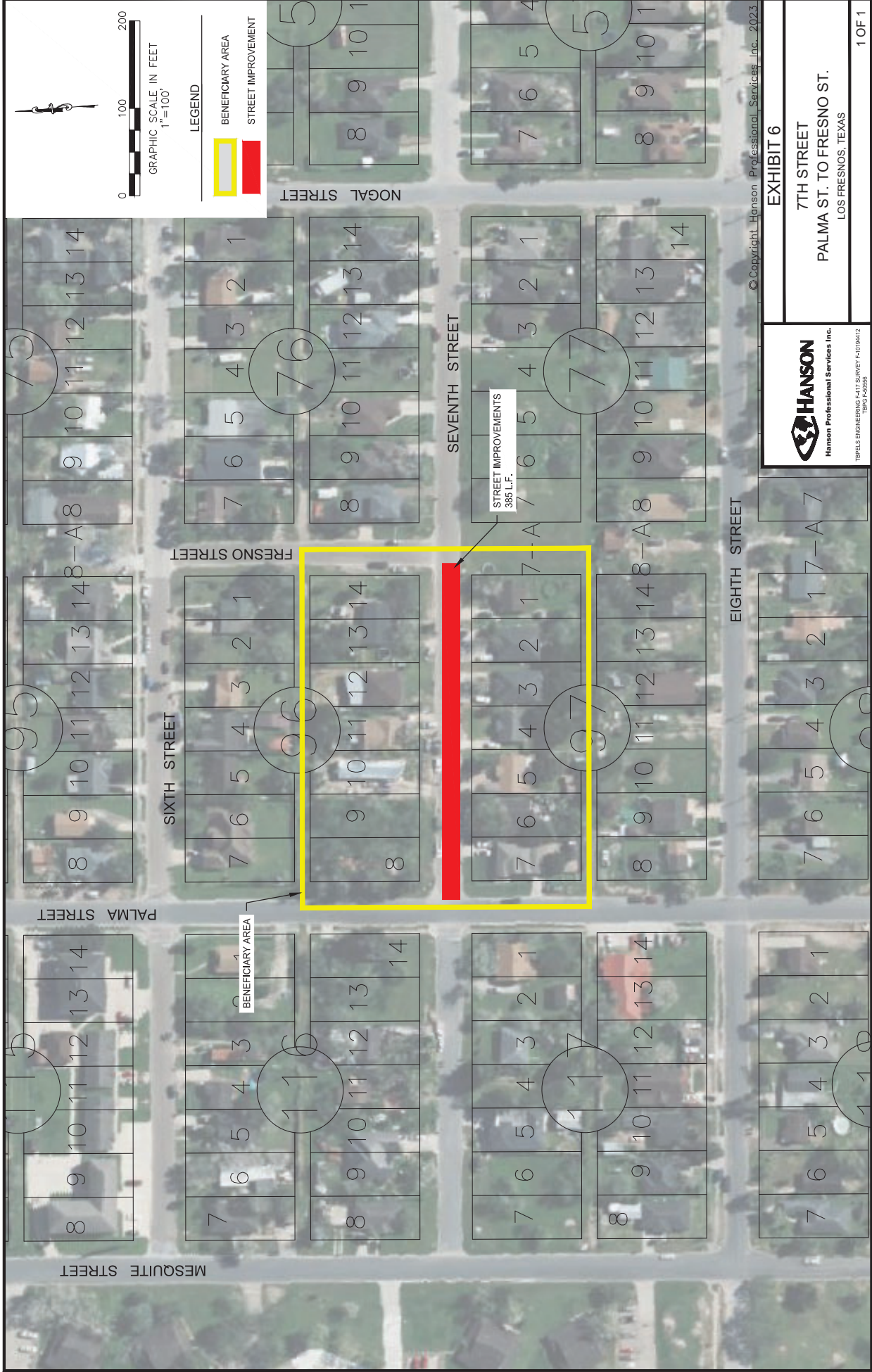
**5TH STREET**

**MESQUITE ST. TO PALMA ST.**

**LOS FRESNOS, TEXAS**

Copyright © Hanson Professional Services Inc. 2023

1 OF 1



© Copyright Hanson Professional Services, Inc., 2023

EXHIBIT 6

7TH STREET

PALMA ST. TO FRESNO ST.

LOS FRESNOS, TEXAS

1 OF 1

**HANSON**  
Hanson Professional Services Inc.

TPBELS ENGINEERING F-117 SURVEY F-109412  
12-15-2022

