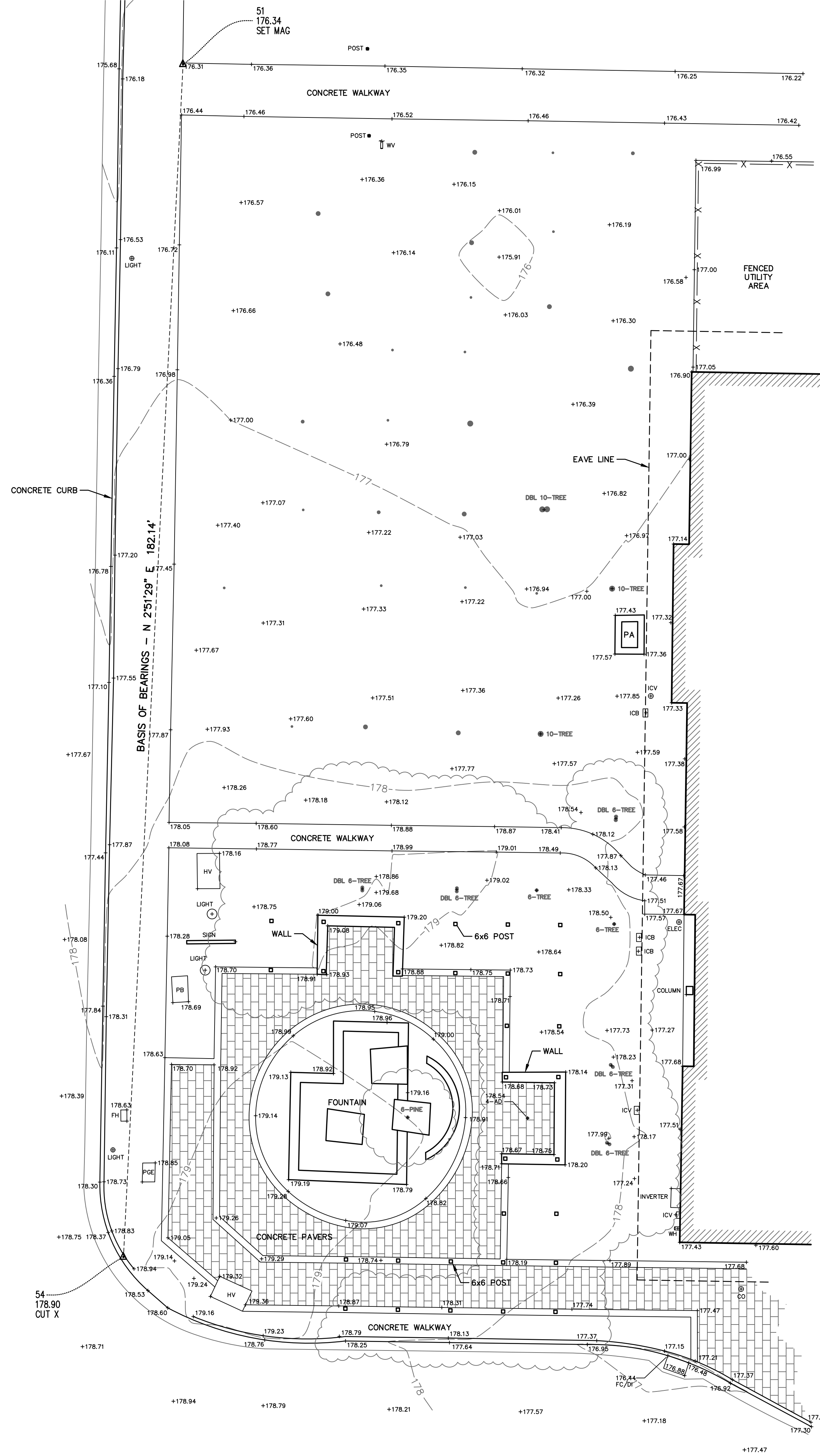


S. SAN ANTONIO ROAD



BASIS OF BEARINGS

BEARINGS FOR THIS SURVEY ARE BASED ON A REALTIME KINEMATIC (RTK) GPS TIE TO CONTROL POINTS SET AS A PART OF THIS SURVEY AS SHOWN HEREON

NORTH 2°51'29" EAST

BASIS OF ELEVATIONS

ELEVATIONS FOR THIS SURVEY ARE BASED ON THE CITY OF LOS ALTOS BENCHMARK #15, LOCATED ON THE TOP OF CURB ON THE EASTERN SIDE OF SAN ANTONIO AVENUE AT ITS INTERSECTION WITH EDITH AVENUE.

BENCHMARK ELEVATION = 175.17' (NAVD88)

UTILITY NOTE

UTILITY LOCATIONS ARE APPROXIMATE. UTILITIES SHOWN ON THIS MAP WERE DETERMINED FROM SURFACE EVIDENCE OF UNDERGROUND LOCATIONS, DURING A SURVEY BY ALPHA LAND SURVEYS IN MAY 2023.

LEGEND

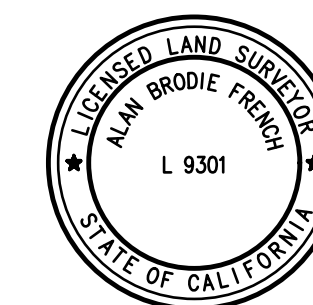
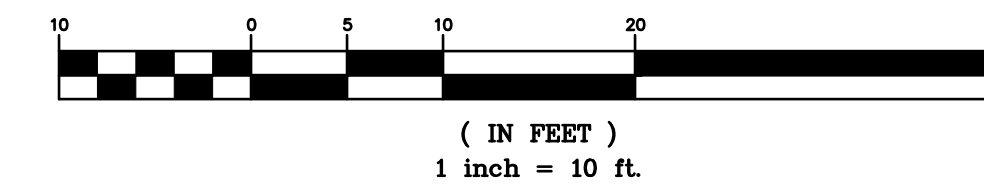
- CONTOUR INTERVAL, MAJOR
- - - CONTOUR INTERVAL, MINOR
- ~ ~ ~ DRIP LINE
- X - X - X - FENCE LINE
- - - TIE LINE
- △ RANDOM CONTROL POINT
- TREE, AS NOTED
- +99.99 SPOT ELEVATION

CONTOUR INTERVAL = 1 FOOT
DIMENSIONS ARE SHOWN IN FEET AND DECIMALS THEREOF

ABBREVIATIONS

- | | |
|-----|--------------------------|
| AD | AREA DRAIN |
| CO | CLEANOUT |
| DBL | DOUBLE |
| DOC | DOCUMENT |
| EM | ELECTRIC METER |
| FH | FIRE HYDRANT |
| GM | GAS METER |
| HB | HOSE BIB |
| HV | HIGH VOLTAGE |
| ICV | IRRIGATION CONTROL VALVE |
| JP | UTILITY POLE |
| PA | PLANTER |
| PB | PACIFIC BELL |
| PGE | PACIFIC GAS AND ELECTRIC |
| SD | STORM DRAIN |
| SS | SANITARY SEWER |
| WM | WATER METER |
| WH | WHARF HYDRANT |
| WV | WATER VALVE |

GRAPHIC SCALE



Alan Brodie French