



City of Los Altos Hillview Dog Park

PRCC Presentation
Draft Master Plan
June 18, 2024







VERDE DESIGN






LANDSCAPE ARCHITECTURE | CIVIL ENGINEERING | SPORT PLANNING AND DESIGN

Master Plan and Report



Dog Park Site

-  Project Introduction
-  Project Schedule
-  Site Analysis
-  Opportunities and Constraints

Public Outreach

-  Listening Session - Meeting One
 -  Preferred Program and Materials
-  Concept Development– Meeting Two
 -  Design Concept No.1
 -  Design Concept No. 2

Preferred Plan

-  Play Features
-  Amenities



Project Schedule

- 🦴 Listening – Part 1
 - Community Meeting No. 1**
 - Pop Up Market West Los Altos
 - Sunday, October 29 @ 11am-1pm*
 - On-Line Survey
 - Open October 26 – November 02*
- 🦴 Concept Development – Part 2
 - Community Meeting No. 2**
 - Wednesday, December 6 @ 6:30pm*
 - On-Line Survey 12/6 – 12/13
- 🦴 Preferred Design – Part 3
 - Presentation to Parks, Arts, Recreation, & Cultural Commission**
 - Presentation to City Council



Project Introduction

Dog Park: What does it mean?

Goal is to promote health and wellness in communities by providing the freedom for play and social interaction for both humans and dogs. Provide a safe opportunity for off-leash interaction.

- 🦷 Play is a critical part of the social, emotional, cognitive, and physical development of pets.
- 🦷 Dog Parks are an opportunity for pet owners to form social groups and shared interest.
- 🦷 Provides multiple forms of play for dogs
- 🦷 Range of sensory engagement for dogs.
- 🦷 Good dog parks are safe, user friendly and hygienic.



Hillview Dog Park - City of Los Altos, CA.

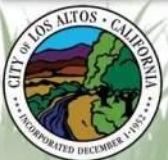
Project Introduction

Project History

- Develop an opportunity for community recreation and social opportunities focused on dog lovers and off-leash play for dogs at Hillview Park.
- 2019 City Council Study Session
- 2020 Recommendation to City Council
- 2021 Three meetings Review and Recommendations
- 2022 Authorization of Dog Parks
- A pilot project with temporary dog play opened in June 2022 at both McKenzie Park and Hillview Park near the proposed site.



Regional Context



Hillview Dog Park - City of Los Altos, CA.

Site Context



Hillview Dog Park - City of Los Altos, CA.

Existing Site



Hillview Dog Park - City of Los Altos, CA.

Existing Site Conditions



Hillview Dog Park - City of Los Altos, CA.

Pilot Dog Play Area



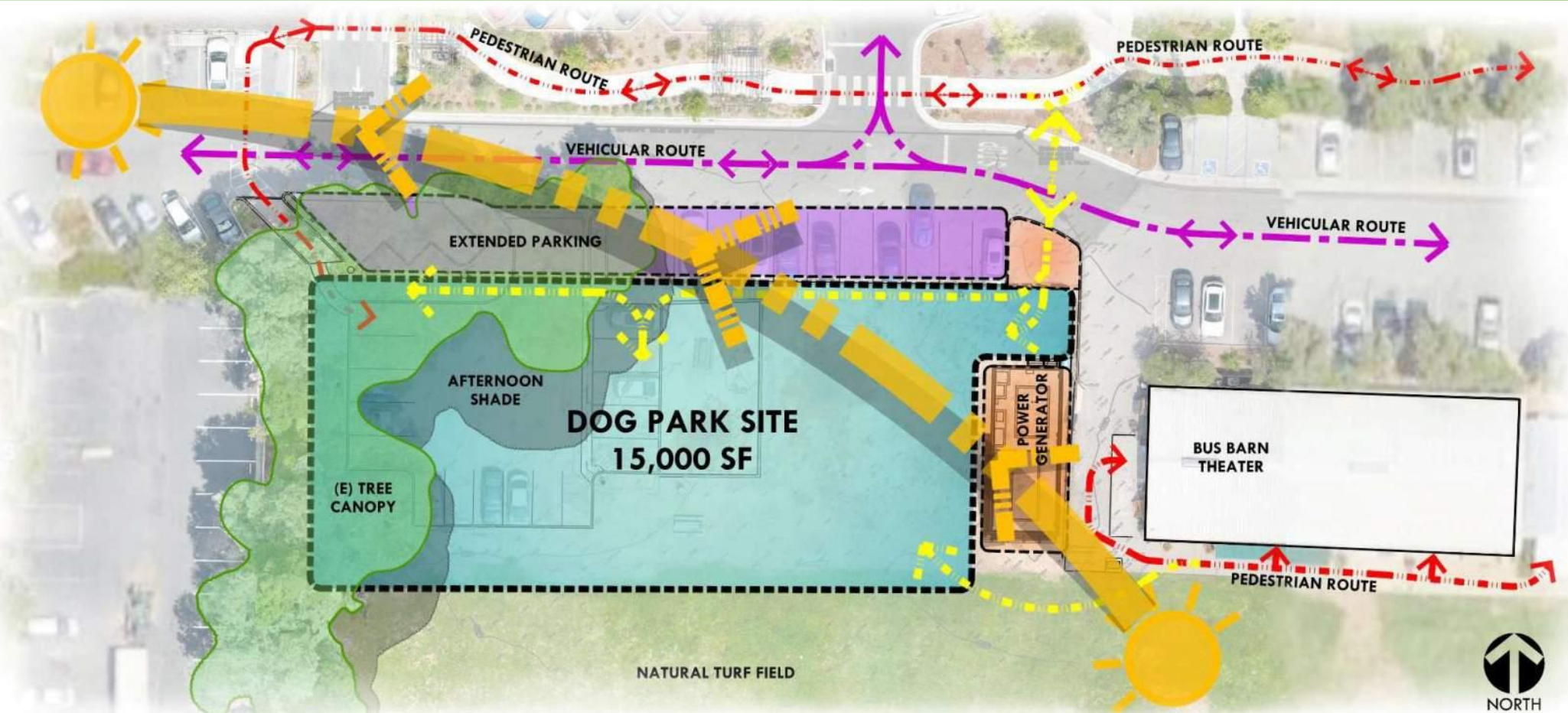
Hillview Dog Park - City of Los Altos, CA.

Site Analysis



Hillview Dog Park - City of Los Altos, CA.

Site Opportunities



Hillview Dog Park - City of Los Altos, CA.

Community Outreach



Listening Meeting #1



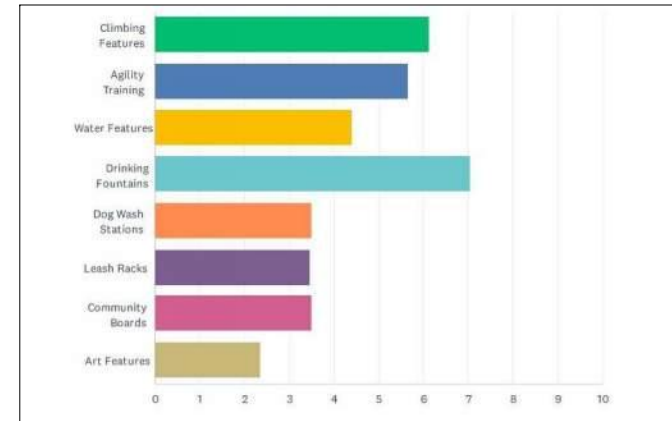
Location: Community Center
Date: October 26, 2023
Participants: 21

Pop Up Event



Location: Downtown Los Altos
Date: October 29, 2023
Participants: 250 +/-

Online Survey



Location: Online
Date: Oct. 26-Nov. 2, 2023
Participants: 118



Hillview Dog Park - City of Los Altos, CA.

Community Meeting #1



Shade with Seating + Rain Cover

Visual Screening

All Weather Surfacing

Multiple Entrances

Large Dog & Small Dog Areas



Hillview Dog Park - City of Los Altos, CA.

Pop Up Event



Drinking Fountains for
Dogs and Humans

Planting + Trees
for Shade

Open Space for
Playing Fetch

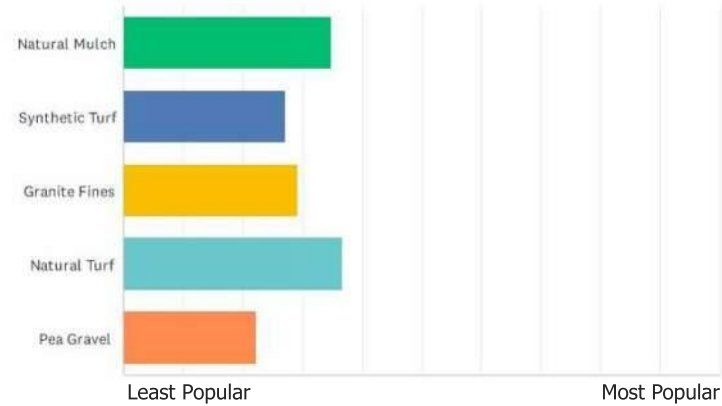
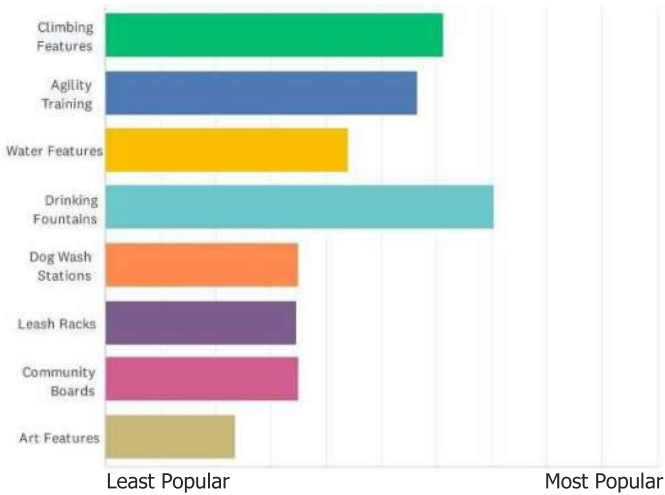
Rules Signage

Trash Bins + Bag
Dispensers



Hillview Dog Park - City of Los Altos, CA.

Online Survey



Survey Questions:

Q1: What would make a dog park successful for you and your pet?

Q2: What other amenities would you like to see at the park?

Q3: Are there any other concerns or suggestions you would like to share?

Dog Park Signage

Security Cameras + Lighting

Handicapped Access

Maintenance + Odor Control

Pedestrian/ Spectator Area



Hillview Dog Park - City of Los Altos, CA.

Consolidated Results

Dog Park Features



Dog Park Features

Online Survey Results

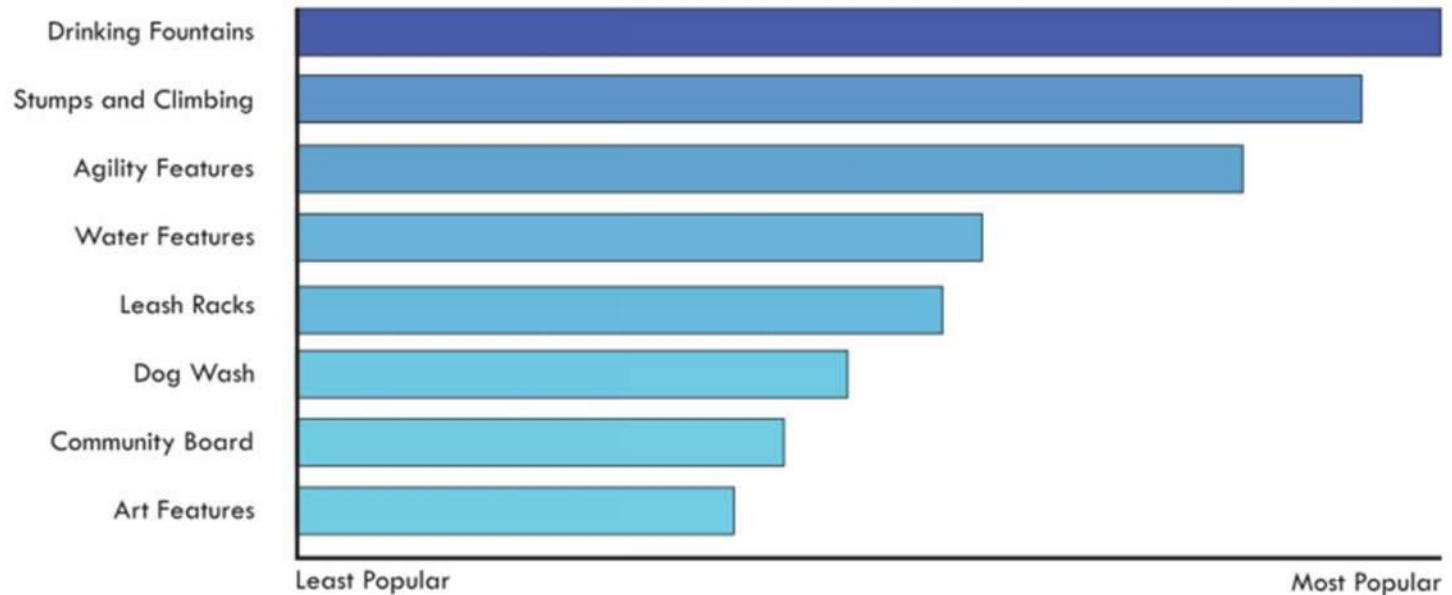
Rank the following features from 1-8 with 1 as the most important.

Rank	Feature	Percentage	Importance Rank
Top 4	Drinking Fountains	64.41%	1
	Stumps and Climbing	39.98%	2
	Agility Training	26.27%	3
	Water Features	17.80%	4
Bottom 4	Dog Wash Stations	33.05%	5
	Leash Racks	33.05%	6
	Community Board	24.58%	7
	Art Features	44.07%	8

Outreach Results

Feature	Count	Popularity
Agility Features	56	Most Popular
Stumps and Climbing	52	
Water Features	41	
Drinking Fountains	33	
Dog Wash Stations	19	Least Popular
Community Board	16	
Art Features	12	
Leash Racks	11	

Consolidated Results



Consolidated Results

Dog Park Features

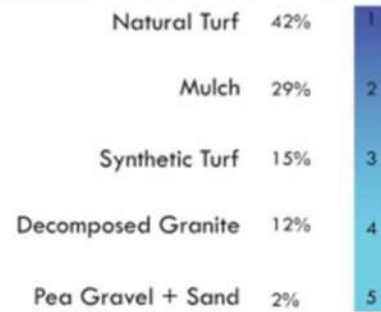


VERDE DESIGN

Surface Materials

Online Survey Results

Rank the following surface materials from 1-5 with one as the most important.

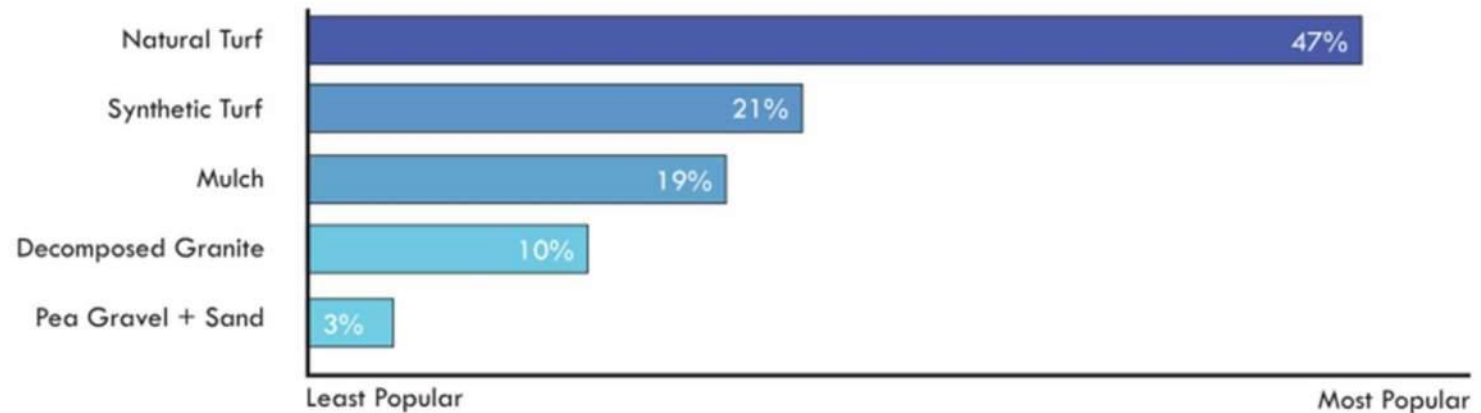


Outreach Results

Place a green dot on the item(s) you like best.



Consolidated Results



Program Elements

Surface Materials

Synthetic turf is the preferred surfacing in a dog park for a few different reasons.

- 1) Maintenance: The surface is less expensive to maintain than other surfaces that have to be filled, repaired, reseeded or irrigated.
- 2) Consistency (ADA)/aesthetics: Artificial turf is more consistent in its condition than surfaces like fiber fill, grass or decomposed granite. This improves the appearance and ability to use more days out of the year than other surfaces that would necessitate more frequent closures. Artificial turf also remains in a condition that allows for more predictable ADA access.
- 3) Dog paw comfort: More consistent surfaces like concrete, pavers or decomposed granite reach higher temperatures that can be uncomfortable for dog's paws.
- Wood fiber surfacing has also been seen to be uncomfortable for dogs.



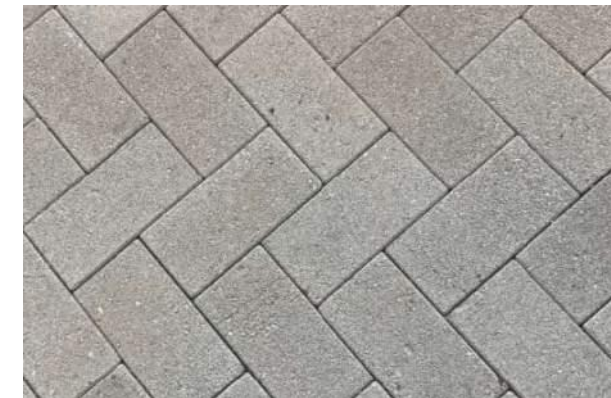
Synthetic Turf



Concrete Flatwork



Decomposed Granite



Permeable Pavers



Program Elements

Dog Park Features - Agility



Dog Walk Pyramid



Teeter Totter



Adjustable Hoop Jump



Mini Hoop Jump



Progressive Ring Jump



Tree Stumps



Hillview Dog Park - City of Los Altos, CA.

Program Elements

Dog Park Features



Dog Wash Station



Drinking Fountain



Benches



Dog Bag Dispenser



Landscape Boulders



Tables



Hillview Dog Park - City of Los Altos, CA.

Program Elements

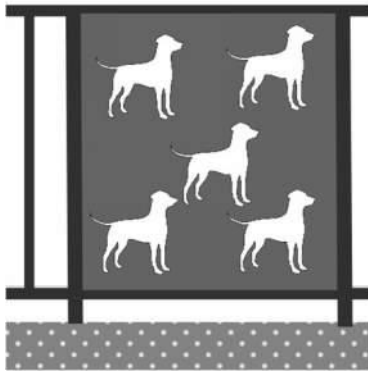
Dog Park Features



Trash and Recycle



Perimeter Fencing 4' Ht



Accent Fencing



Shade Structures



Hillview Dog Park - City of Los Altos, CA.

Program Elements

Planting Materials



Shade Trees



Shade Trees



Ornamental Trees



Ornamental Trees



Screening Shrubs



Groundcover



Fragrant Planting



Bio-Filtration Planting



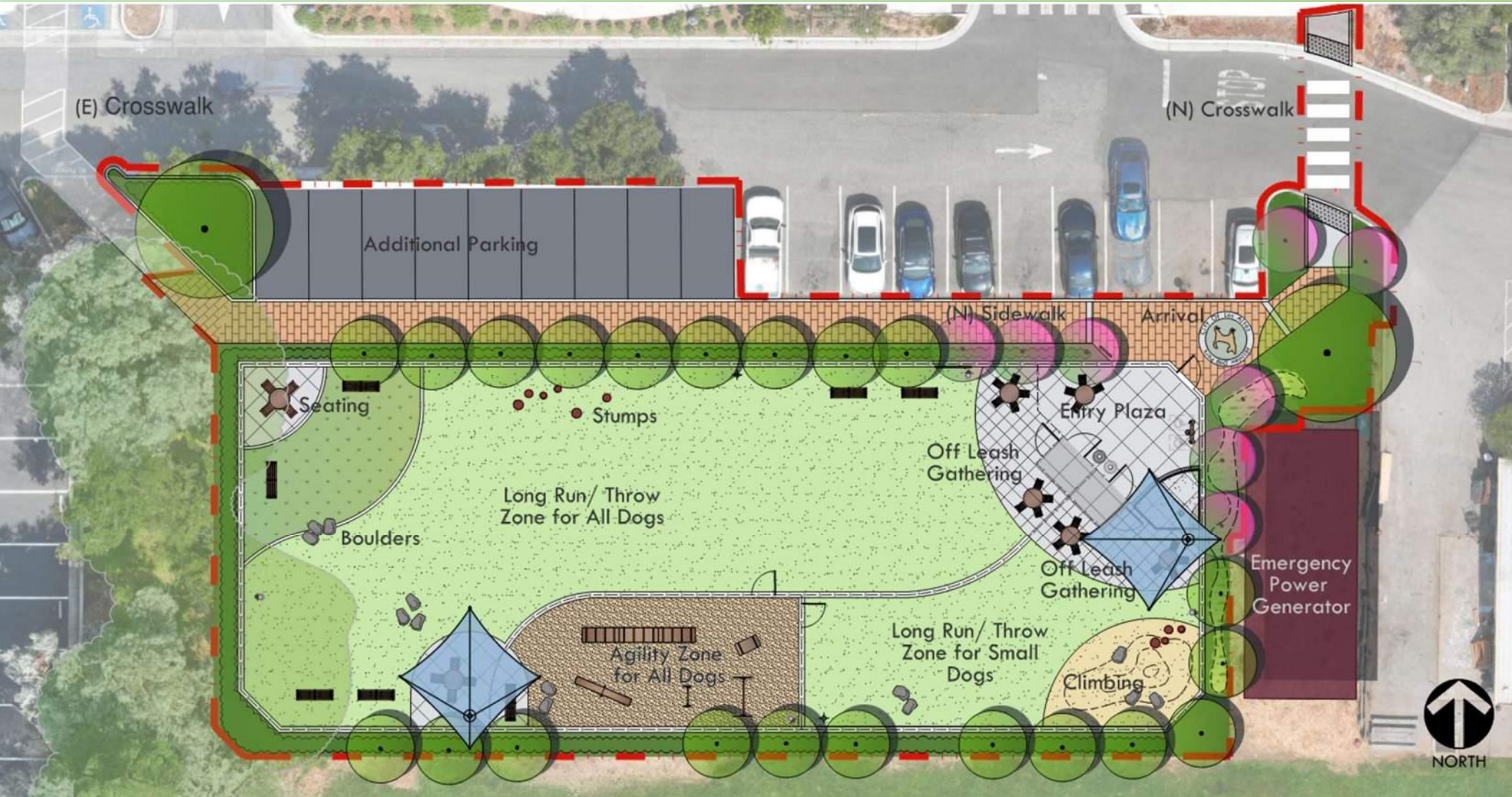
Hillview Dog Park - City of Los Altos, CA.

Design Concept A

Overall Site

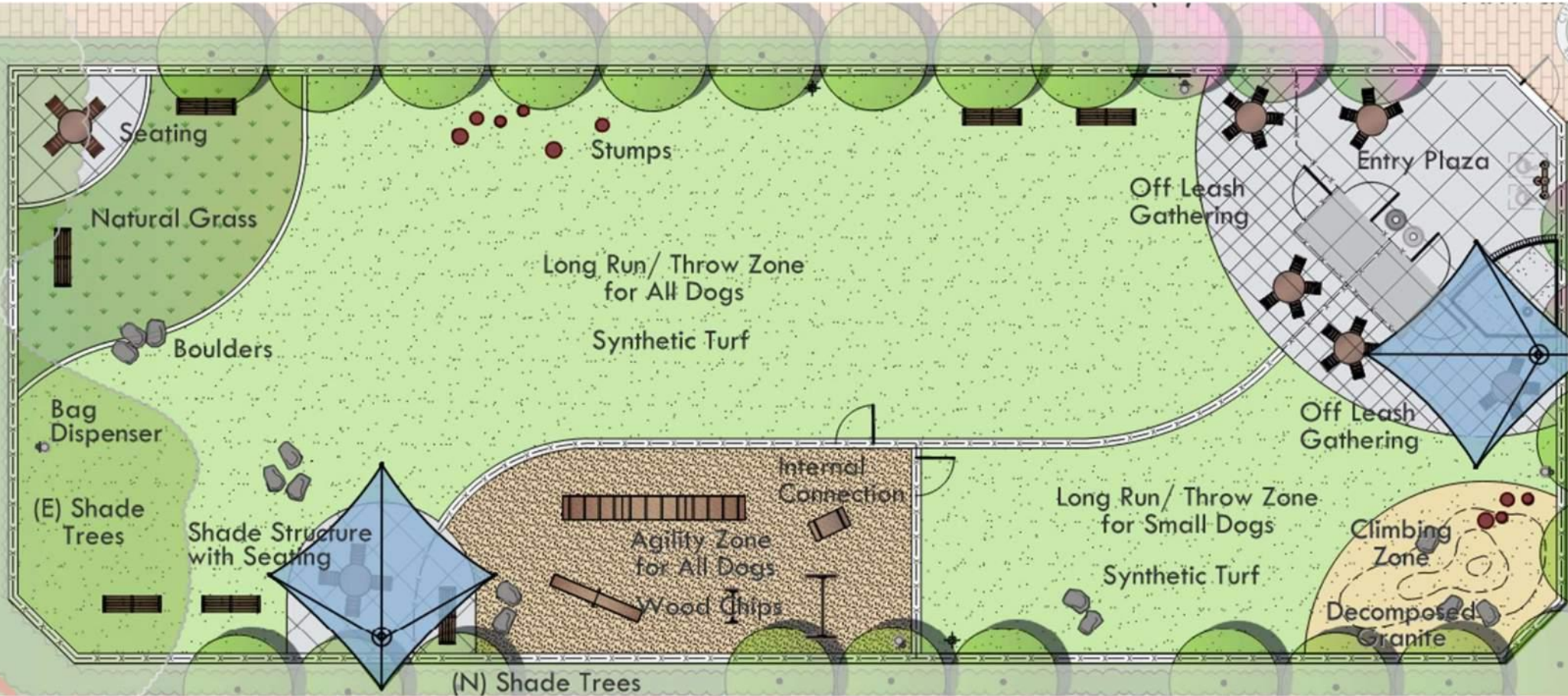


VERDE DESIGN



Design Concept A

Field Enlargement



Hillview Dog Park - City of Los Altos, CA.

Design Concept B

Field Enlargement



Hillview Dog Park - City of Los Altos, CA.

Master Plan Concept

Overall Site



VERDE DESIGN



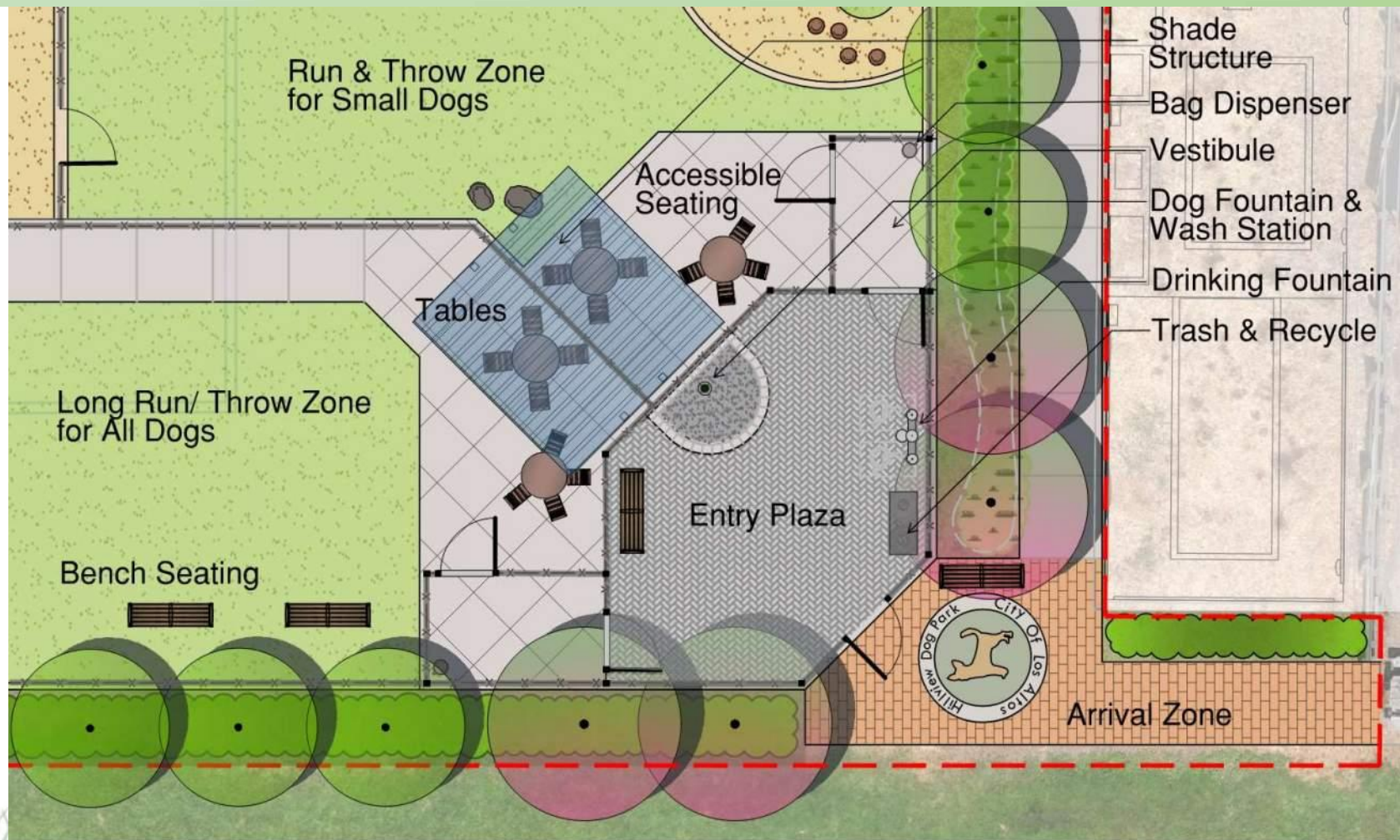
Hillview Dog Park - City of Los Altos, CA.

Master Plan Concept

Entry Plaza Enlargement



VERDE DESIGN



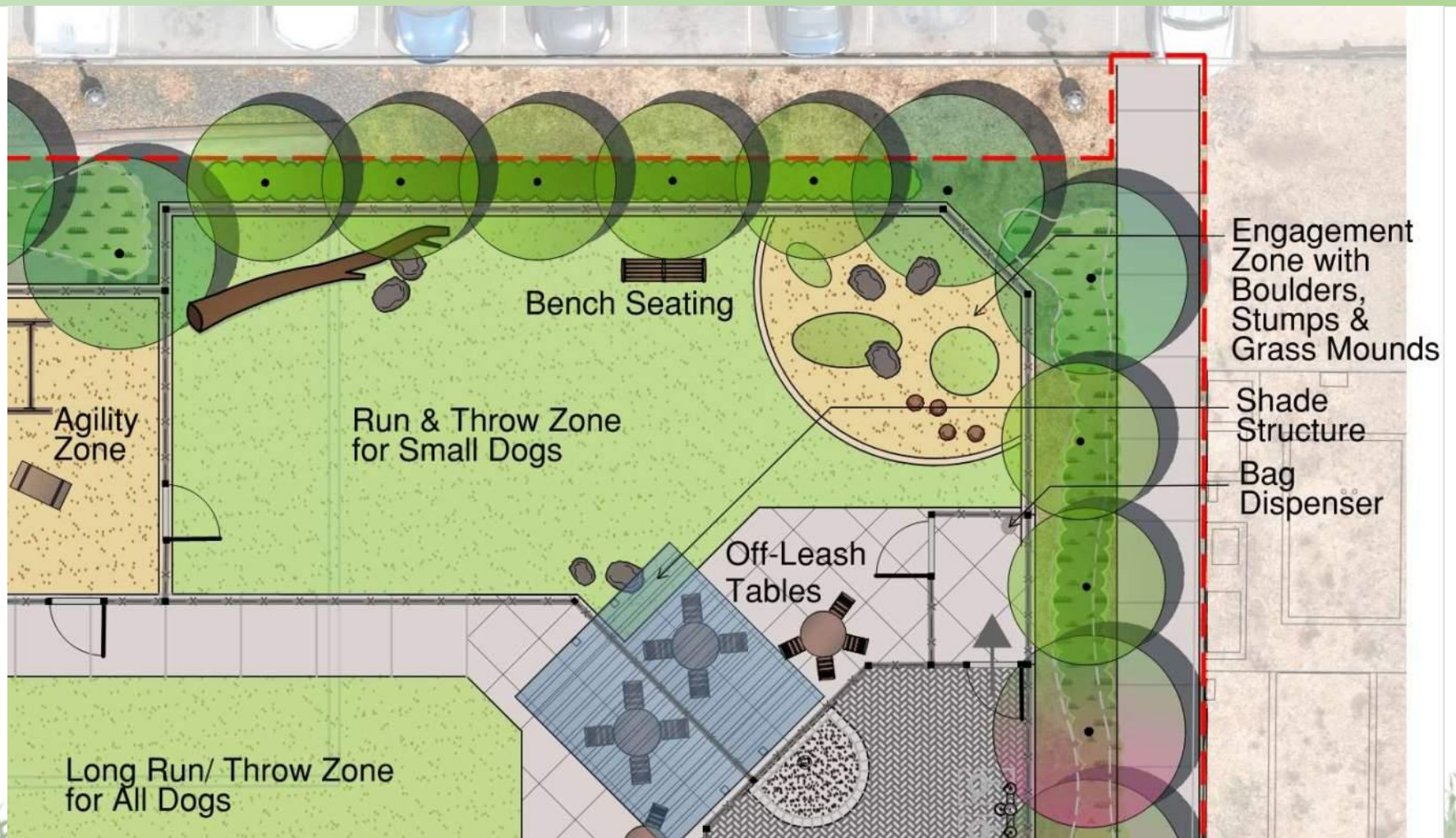
Hillview Dog Park - City of Los Altos, CA.

Master Plan Concept

Small Dog Zone Enlargement



VERDE DESIGN



Hillview Dog Park - City of Los Altos, CA.

Master Plan Concept

All Dog Zone Enlargement



Hillview Dog Park - City of Los Altos, CA.

Master Plan Concept

Overall Site



Hillview Dog Park - City of Los Altos, CA.

Master Plan Concept

Single Off Leash Zone



VERDE DESIGN



Hillview Dog Park - City of Los Altos, CA.

Next Steps



Hillview Dog Park City of Los Altos

Discussion

Questions from the commission.

City Parking Study

Presentation

Questions from the commission.

Council Meeting

July 7, 2024

Thank You!



Hillview Dog Park - City of Los Altos, CA.

Parking Study

City of Los Altos



Hillview Dog Park - City of Los Altos, CA.

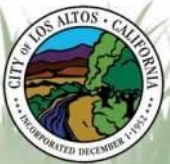
Parking Study

City of Los Altos

Site Context



Hillview Dog Park - City of Los Altos, CA.



Parking Study City of Los Altos

Area One



Hillview Dog Park - City of Los Altos, CA.

Parking Study

City of Los Altos

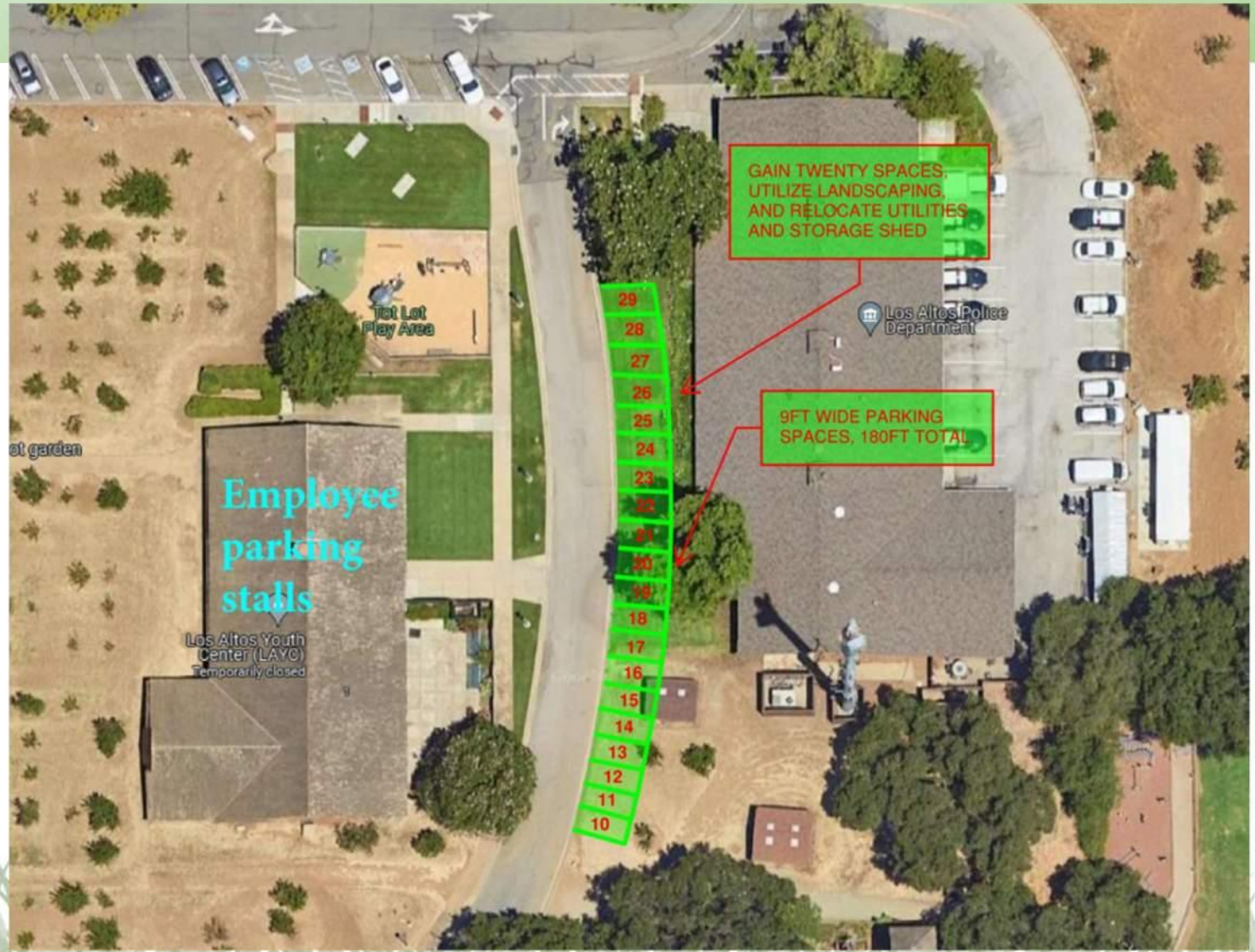
Area Two



Hillview Dog Park - City of Los Altos, CA.

Parking Study City of Los Altos

Area Three



Hillview Dog Park - City of Los Altos, CA.



Parking Study

City of Los Altos

Discussion



Hillview Dog Park - City of Los Altos, CA.

Supplemental Slides for Discussion



VERDE DESIGN

Hillview Dog Park

City of Los Altos



Hillview Dog Park - City of Los Altos, CA.

Preferred Plan



Hillview Dog Park - City of Los Altos, CA.

Community Meeting 2

Option A – Corner Entry



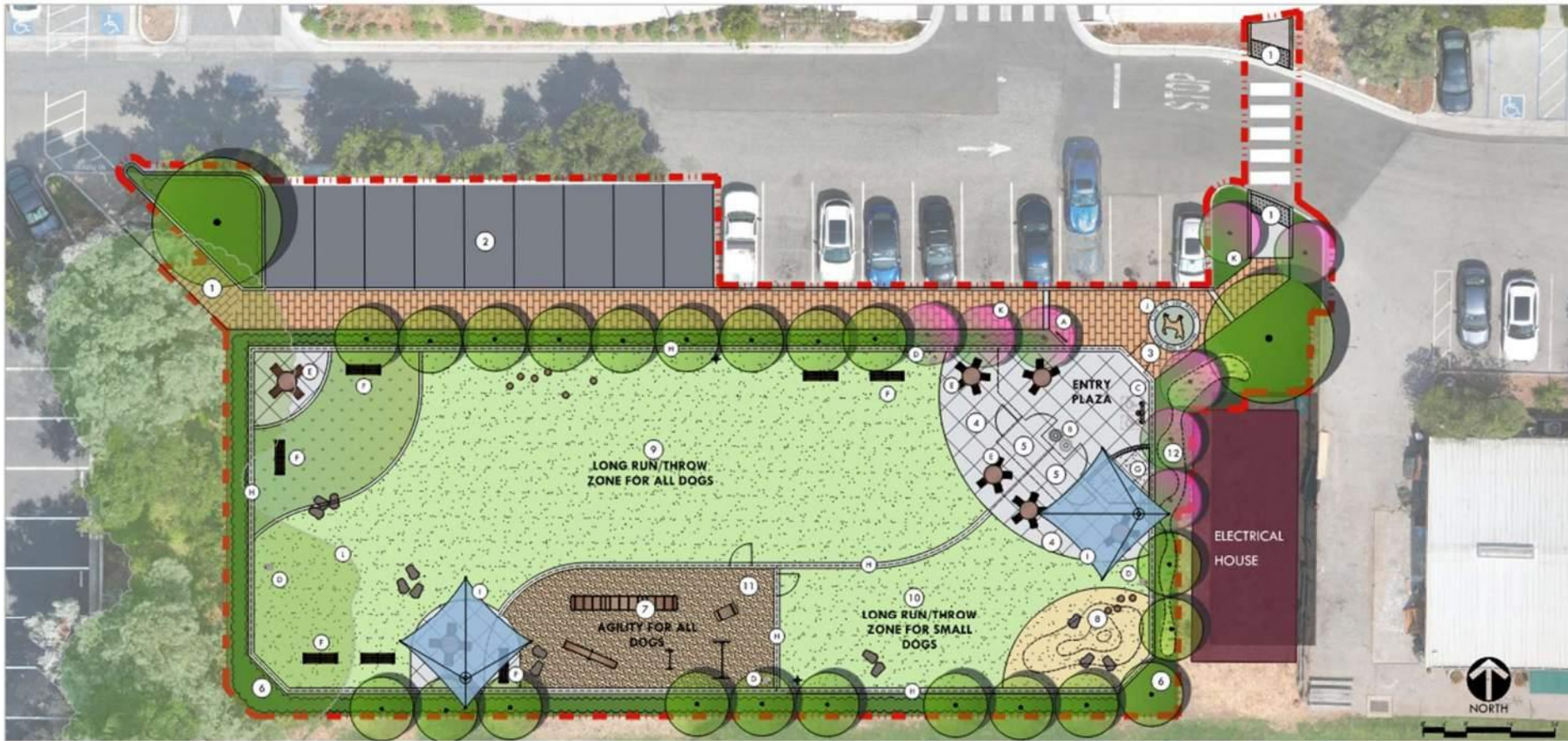
Community Meeting 2

Option B – Center Entry



Community Meeting 2

Concept A



CONCEPT LEGEND

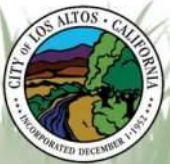
- | | |
|----------------------------|--|
| 1 NEW CROSSWALK & SIDEWALK | 7 CLIMBING/AGILITY AREA FOR ALL DOGS |
| 2 NEW PARKING STALLS | 8 CLIMBING / AGILITY AREA FOR SMALL DOGS |
| 3 DOG PARK ENTRANCE | 9 LONG RUN/THROW ZONE FOR ALL DOGS |
| 4 PRIMARY GATHERING SPACE | 10 LONG RUN/THROW ZONE FOR SMALL DOGS |
| 5 SUB-ENTRY VESTIBULE | 11 INTERNAL CONNECTION |
| 6 PLANTING BUFFER | 12 STORMWATER BIO-FILTRATION AREA |

DOG PARK FEATURES/AMENITIES

- | | |
|---------------------|--------------------------------|
| A PARK SIGNAGE | C DOG WASH STATION |
| B TRASH RECEPTACLES | D 42" TALL PERIMETER FENCE |
| C DRINKING FOUNTAIN | E CANTILEVERED SHADE STRUCTURE |
| D PET WASTE STATION | F SPECIALITY PAVING PATTERN |
| E TABLE AND SEATS | G ORNAMENTAL TREE |
| F BENCH | H EXISTING TREE LINE |

SURFACE LEGEND

- | | |
|-----------------|--------------------|
| PAVER | NATURAL GRASS |
| CONCRETE PAVING | DECOMPOSED GRANITE |
| ASPHALT PAVING | WOOD CHIP SURFACE |
| SYNTHETIC TURF | |



Community Meeting 2

Concept B



CONCEPT LEGEND

- 1 NEW SIDEWALK
- 2 NEW PARKING STALLS
- 3 DOG PARK ENTRANCE
- 4 PRIMARY GATHERING SPACE
- 5 CANTILEVERED SHADE STRUCTURE
- 6 PLANTING BUFFER
- 7 CLIMBING/AGILITY AREA FOR ALL DOGS
- 8 CLIMBING AREA FOR SMALL DOGS
- 9 LONG RUN/THROW ZONE FOR ALL DOGS
- 10 LONG RUN/THROW ZONE FOR SMALL DOGS
- 11 INTERNAL CONNECTION
- 12 STORMWATER BIO-FILTRATION AREA

DOG PARK FEATURES/AMENITIES

- A PARK SIGNAGE
- B TRASH RECEPTACLES
- C DRINKING FOUNTAIN
- D PET WASTE STATION
- E TABLE AND SEATS
- F BENCH
- G DOG WASH STATION
- H 42" TALL PERIMETER FENCE
- I SPECIALITY PAVING PATTERN
- J ORNAMENTAL TREE
- K EXISTING TREE LINE

SURFACE LEGEND

-  PAVER
-  CONCRETE PAVING
-  ASPHALT PAVING
-  SYNTHETIC TURF
-  DECOMPOSED GRANITE





VERDE DESIGN

