



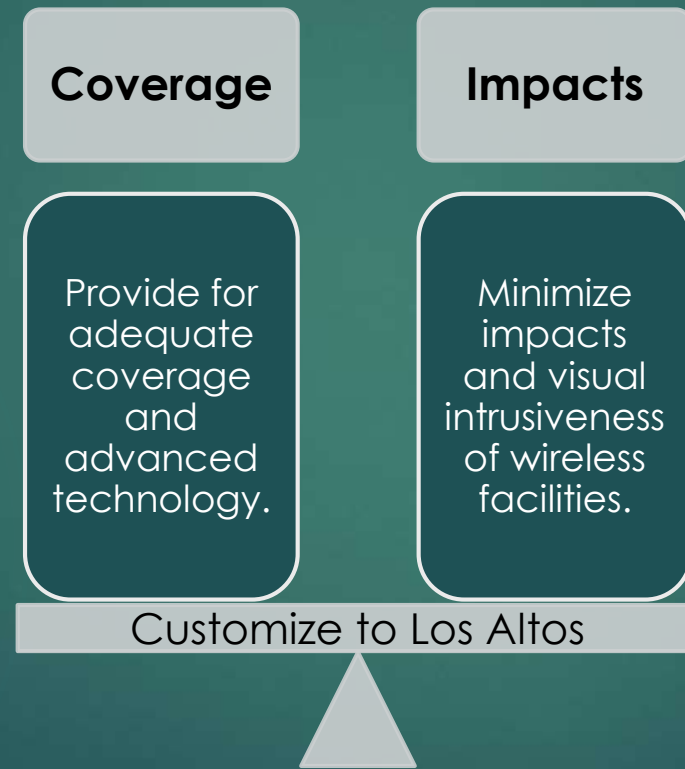
City of Los Altos

# Wireless Telecommunications Facilities Ordinance and Design Guidelines

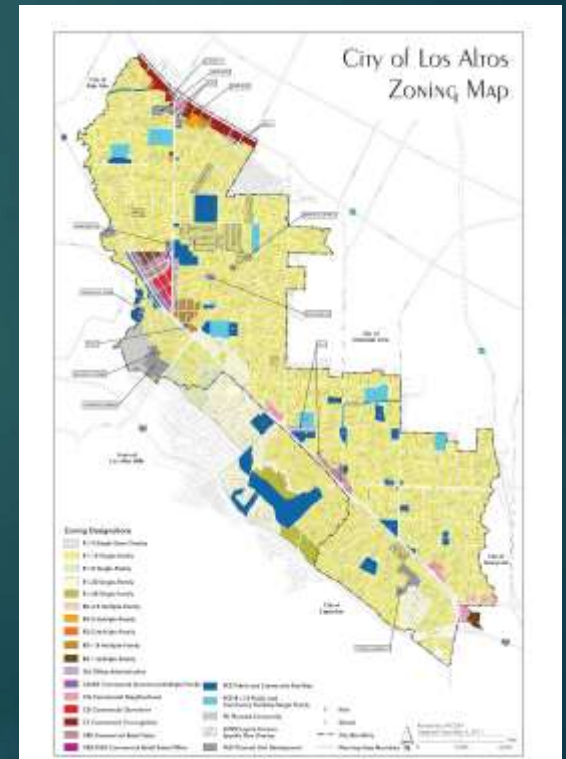
City Council Public Hearing

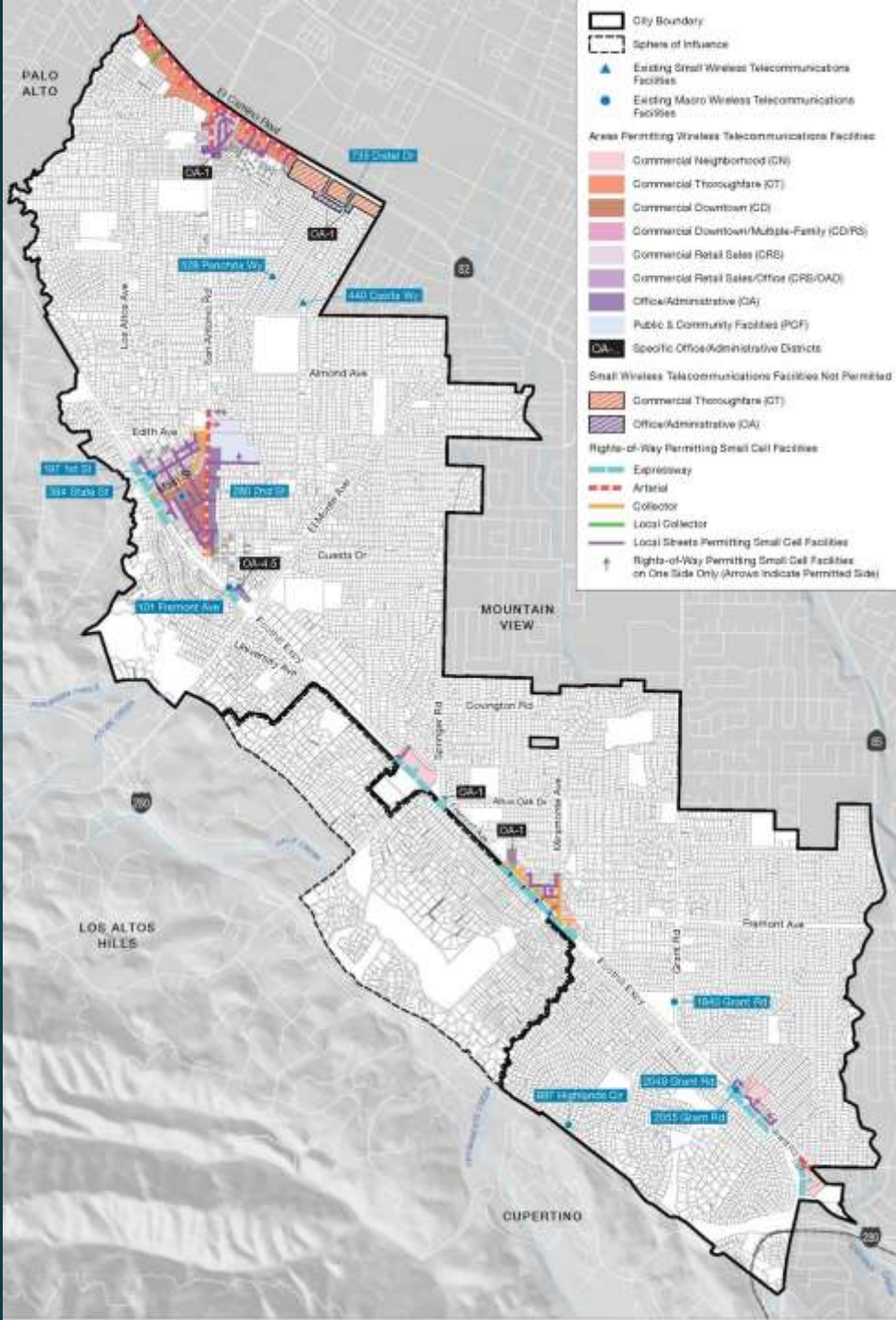
**APRIL 12, 2022**

# Purpose of Ordinance and Design Guidelines



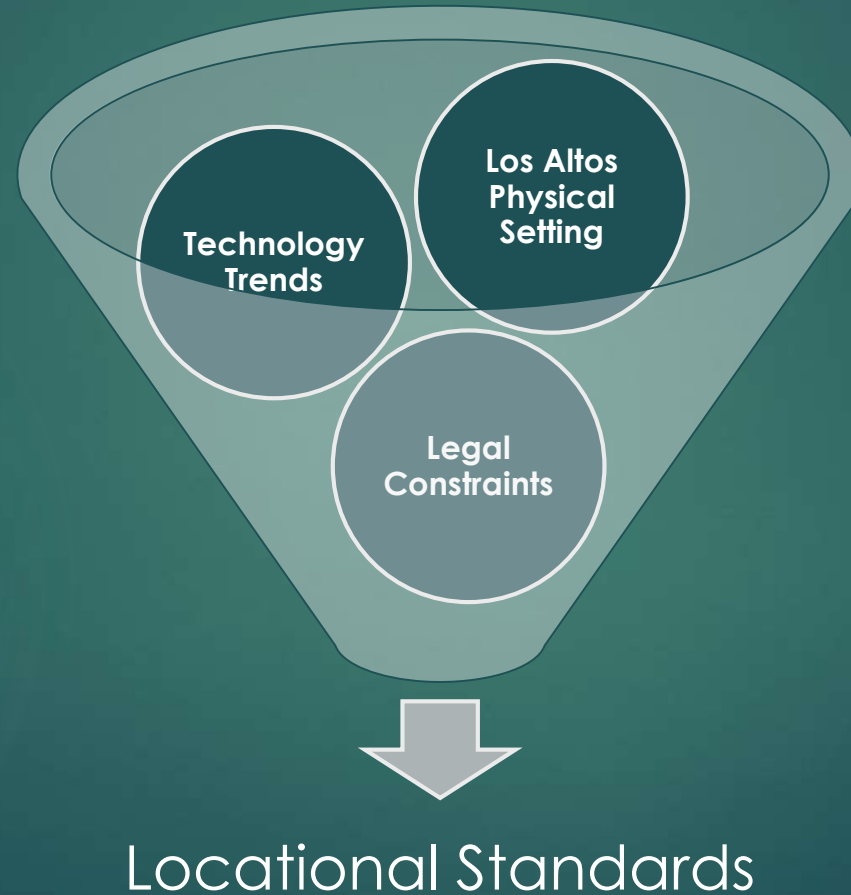
# Locational Standards



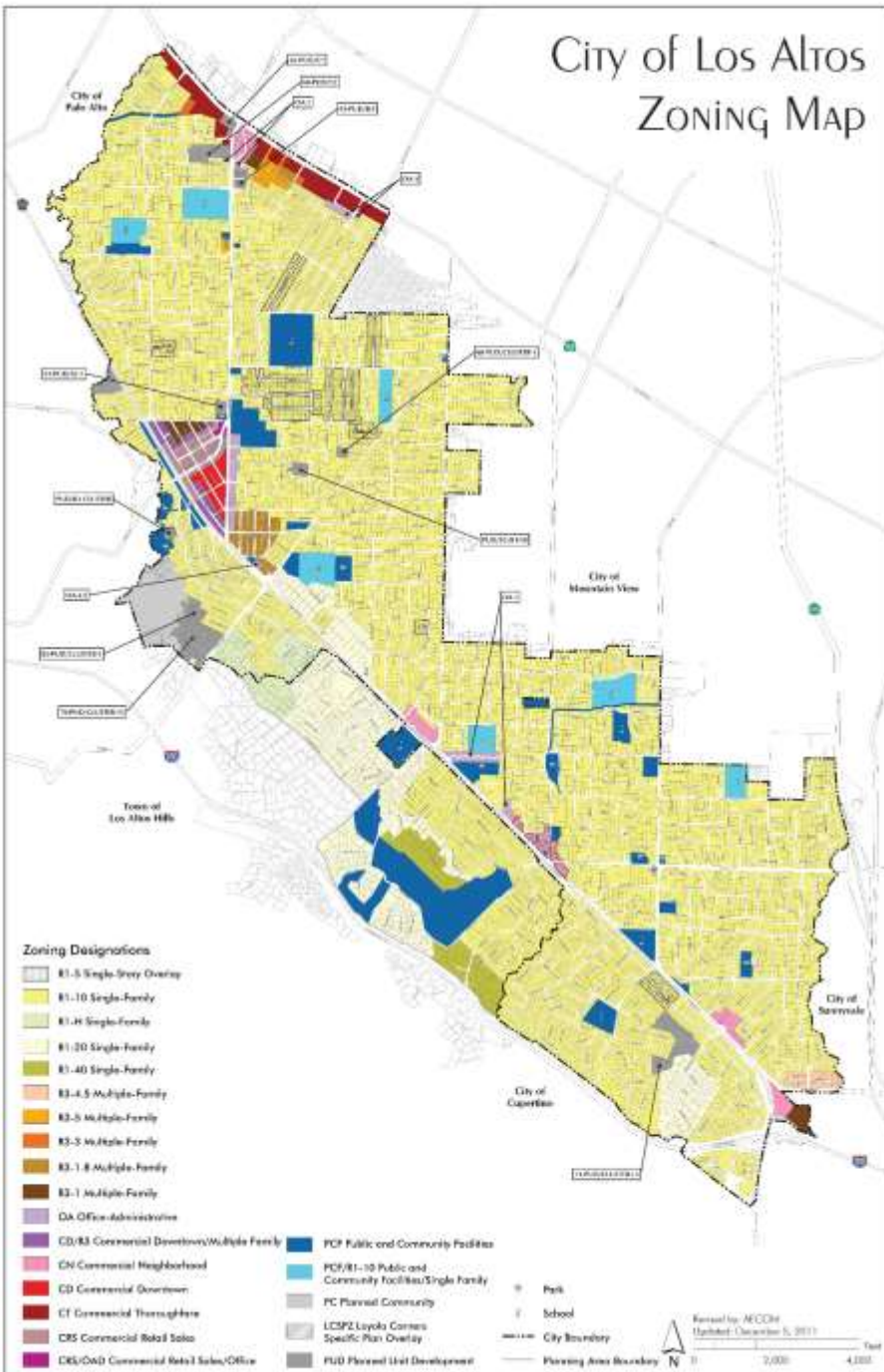


# Existing Permitted Locations

# Factors Considered in Locational Standards



# City of Los Altos ZONING MAP



# Los Altos Land Use Pattern

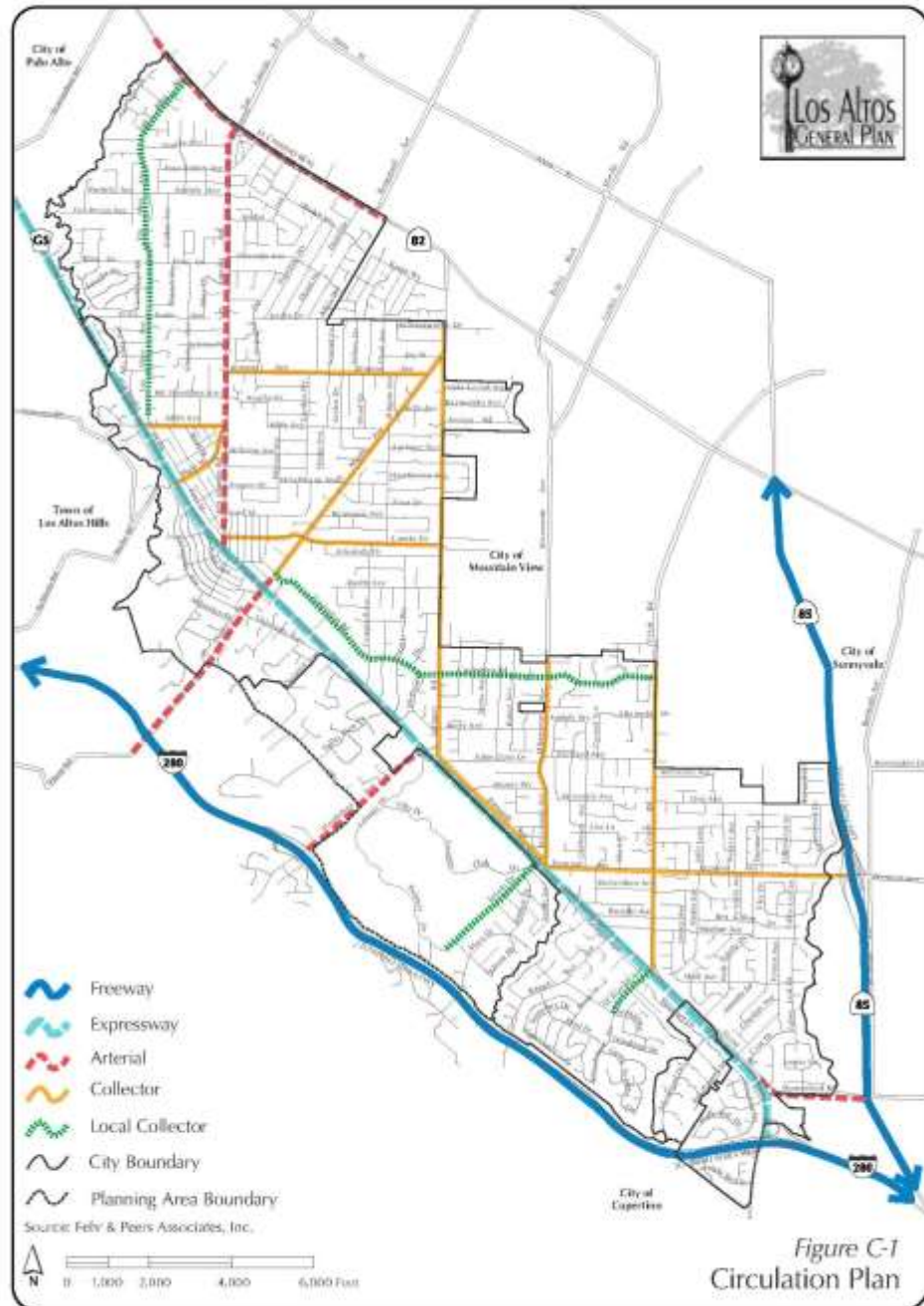


Figure C-1  
Circulation Plan

# Location of Expressways, Arterials, Collectors, and Local Collectors

# Wireless Telecommunications Facilities Technology Trends



Small Facilities

Less visually intrusive.  
Smaller, less powerful  
antennas.  
Closer spacing.  
Difficult to co-locate  
facilities.  
Therefore, more  
facilities.

Large visually  
intrusive towers.  
Greater power  
allows for:

- Greater spacing;
- Co-location; and
- Fewer facilities.

"Macro" Facilities





# Legal Constraints



Cannot regulate based on radio frequency (RF) emissions.

Cannot require or prohibit any specific technology.

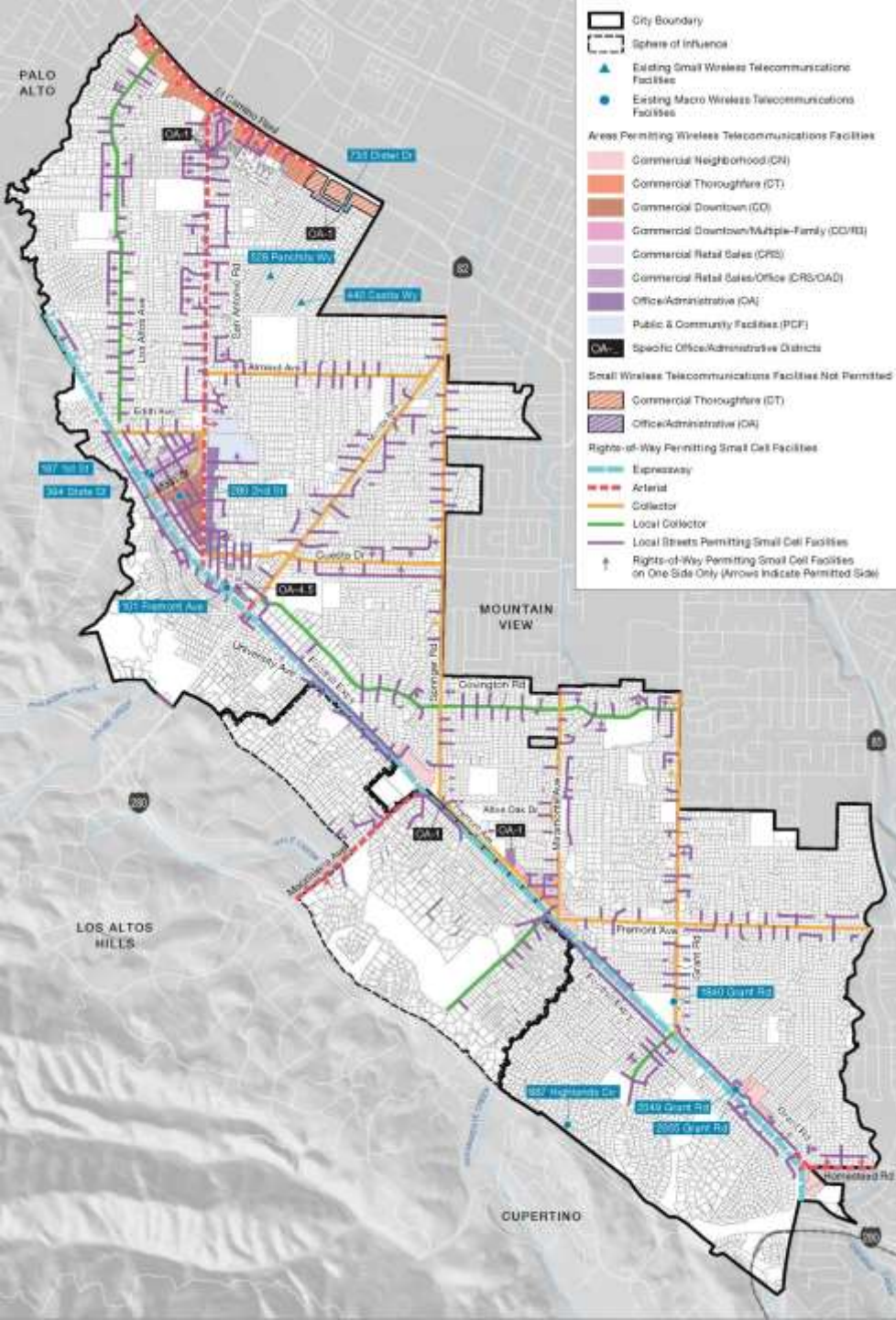
# Proposed Revisions to Locational Standards

## Existing Locational Standards

- ▶ Excludes Residential Zones (private properties and rights-of-way).
- ▶ 500-foot buffer from schools.
- ▶ 1,500-foot buffer between small facilities.

## Proposed Locational Standards

- ▶ Excludes Residential Zones (private properties outside of rights-of-way only).
- ▶ Includes rights-of-way for:
  - ▶ Expressways, Arterials, Collectors, and Minor Collectors;
  - ▶ Local commercial streets;
  - ▶ Local residential streets within 200-500 feet of Expressways, Arterials, Collectors, and Minor Collectors; and
  - ▶ Potentially, other local residential streets based on a systemwide review of carriers' facilities.
- ▶ 1,000-foot buffer between small facilities.



# Proposed Preferred and Less Preferred Locations

# Three-tiered Approach to Wireless Facilities Locations

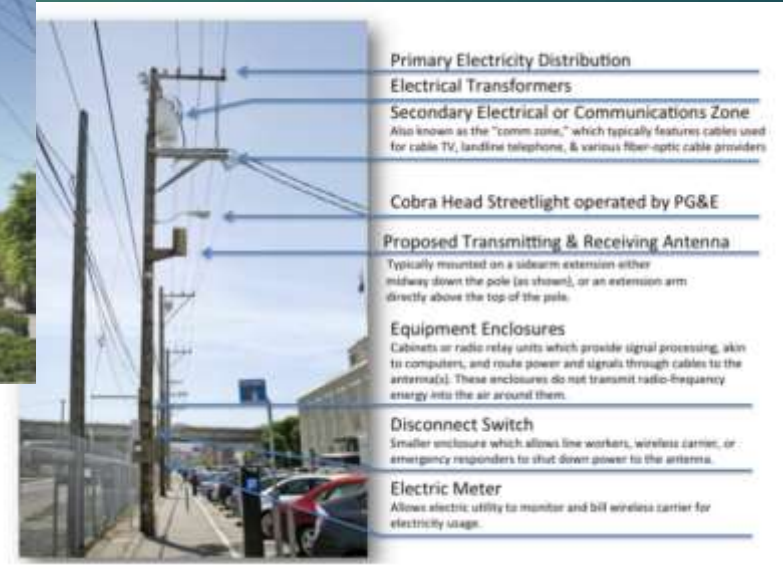


# Design Guidelines

This



Not This



# Proposed Revisions to Design Guidelines

Add explicit design principles for all wireless facilities.

Modify configuration preferences.

Supplement existing guidelines and add illustrations.

# Proposed Design Principles for Wireless Facilities

---

Minimize Impacts

Visual

---

Noise

---

Other

---

Integration and Concealment

1. Facilities are to be visually integrated into their sites and as hidden from view as feasible.

---

Unconcealed design permitted only if a concealed facility is infeasible or would reduce the number and overall visual intrusiveness of facilities.

---

Context

What integrates well into one site and conceals a wireless telecommunications facility might not be appropriate for another situation.

---

# Expanded Design Guidelines

• Specific design preferences for facilities within:

- Rights-of-way
- Private properties

• Landscape design.

- Retain existing, mature trees wherever feasible.
- Retain landscaping for the life of the facility.

• Design underground vaults to protect existing street trees.

• Provide passive rather than mechanical ventilation where feasible.



# Recommendation

## **Approve:**

- ▶ Resolution 2022-\_\_, Adopting a Negative Declaration in compliance with CEQA
- ▶ Ordinance 2022-\_\_, Wireless Telecommunications Facilities Locational Standards, as recommended by the Planning Commission with additional modifications
  - ▶ 1,000-foot separation between small wireless facilities
  - ▶ Demonstration of feasibility for approval of less preferred sites or design configurations
  - ▶ Criteria for “Least Preferred Sites” replacing proposed systemwide review
- ▶ Resolution 2022-\_\_, Wireless Telecommunications Facilities Design Guidelines, as recommended by the Planning Commission with additional modifications