

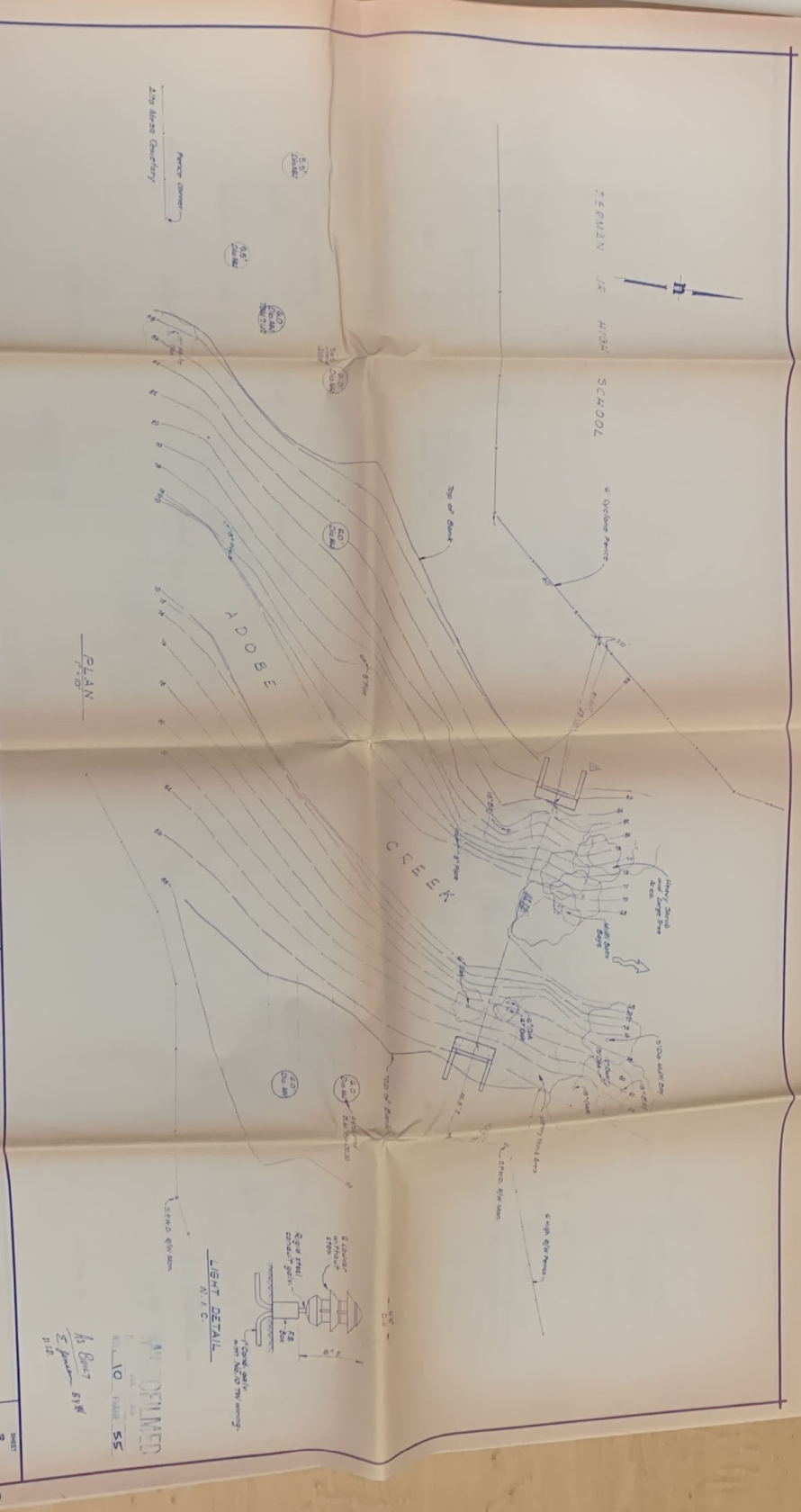


DATE: May 1974	SCALE: 1" = 40'	DESIGNED BY: JWC	PROJECT NO.: 6072-18
DRAWN BY: JWC	PROJECT NO.: 6072-18	PROJECT NO.: 6072-18	PROJECT NO.: 6072-18
PROJECT NO.: 6072-18	PROJECT NO.: 6072-18	PROJECT NO.: 6072-18	PROJECT NO.: 6072-18

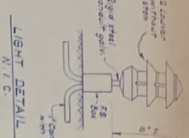


**GEORGE S. NOLTE AND ASSOCIATES**  
 SAN JOSE • WALKER CREEK • SAN FRANCISCO • SAN DIEGO  
 1415 RIVER ST. • 1415 RIVER ST. • 1415 RIVER ST. • 1415 RIVER ST.

**FOUNDATION PLAN**  
 ADOBE CREEK RESTRICTION/BICYCLE BRIDGE  
 AT THE SAN FRANCISCO WATER DEPARTMENT RIGHT OF WAY  
 CALIFORNIA  
 PAID ALTS / LOS ALTS



PLAN



*As Built*  
*E. J. ...*  
 8/18

PROPOSED  
 10  
 55

DATE	2-7-8/82	BY	
DESIGNED	7/1/82	CHECKED	DH
DRAWN	7/1/82	APPROVED	
PROJECT	6070-718	DATE	
BY		DATE	
REVISIONS		DATE	

**GEORGE S. NOLTE AND ASSOCIATES**

SAN JOSE    WAINWIT CREEK    SAN FRANCISCO    SAN DIEGO  
 (408) 251-2300    (415) 954-0800    (415) 433-2340    (714) 778-8822

**ADOBEE CREEK REDISTRIB**

AT THE SAN FRANCISCO WATER D

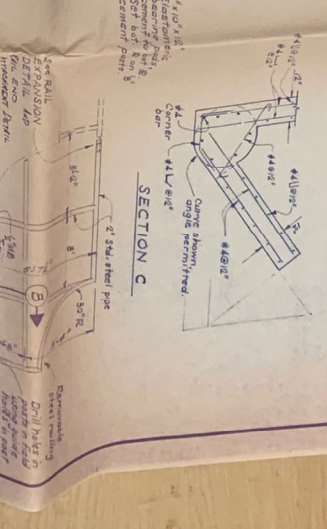
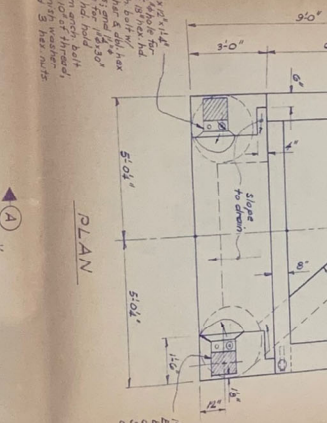
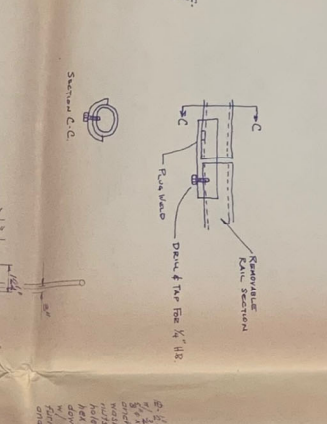
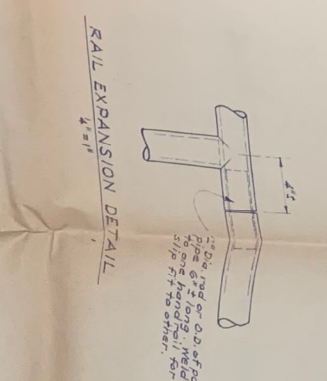
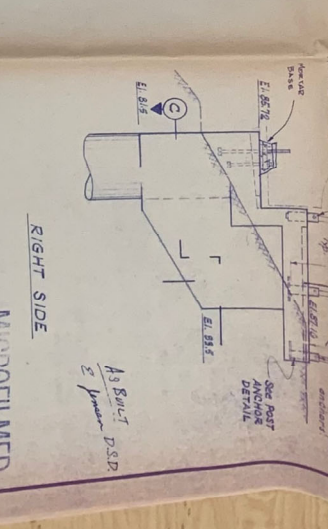
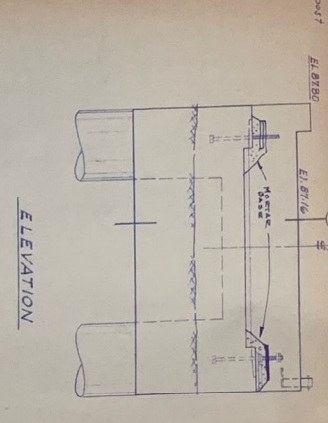
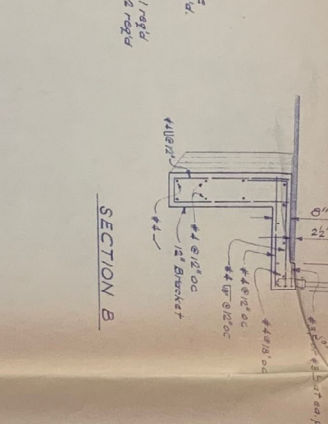
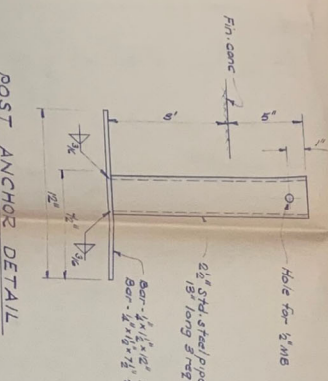
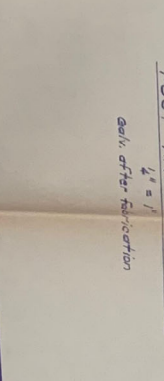
PALO ALTO / LOS ALTOS

ABUTMENT 2

SUPPLEMENTAL

RIGHT SIDE

PROJECT	6070-718
SHEET	4A
OF	5 SHEETS
JOB NO.	6070-718
DATE	8/2/82



This drawing is to replace detail in sheet 4 of 5 sheets for Section A see sheet 4 of 5 sheets

0/2/82

AS BUILT DSD  
 2/1/82

Microfilmed  
 JUL 1 1982  
 FRAME 51



DATE	NOV 9/74	SCALE	AS NOTED
DRAWN	WJH	DESIGNED	WJH
CHECKED	WJH	BY	WJH
PROJECT	BRIDGE	DATE	NOV 9/74
BY	WJH	DATE	NOV 9/74
REVISIONS			

NOTE: Planks to receive non-steel decking, see special provisions.

APPROVED  
DATE: MAY 9/75  
BY: [Signature]

APPROVED  
DATE: MAY 9/75  
BY: [Signature]

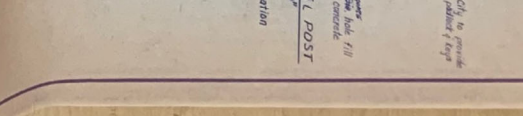
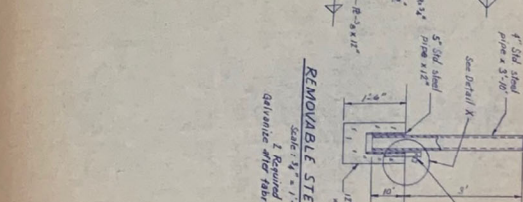
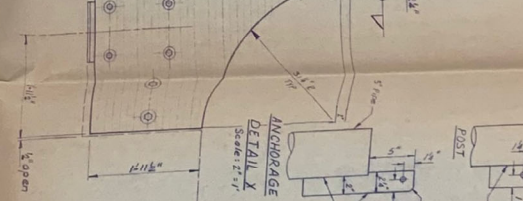
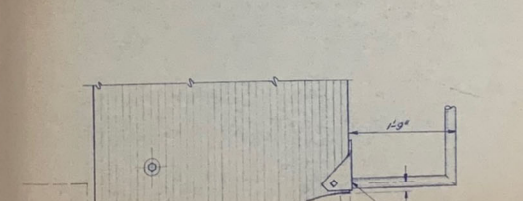
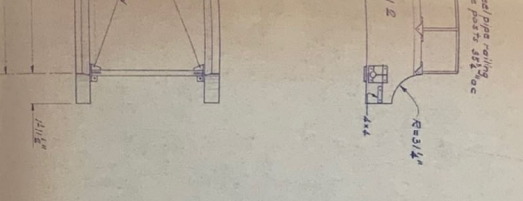
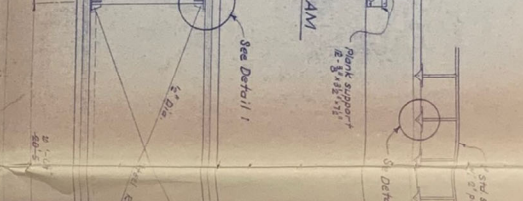
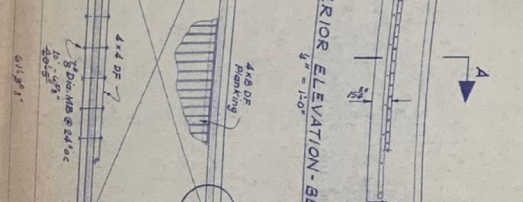
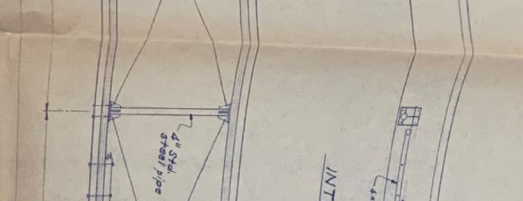
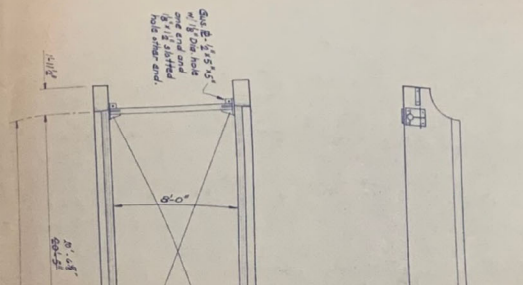
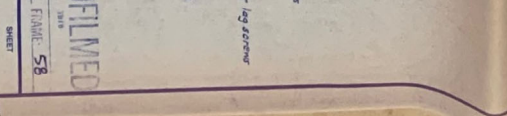
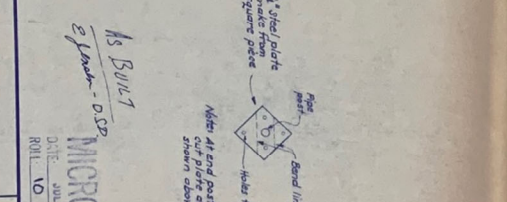
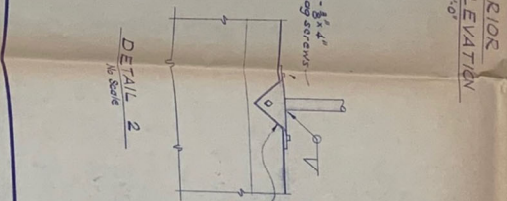
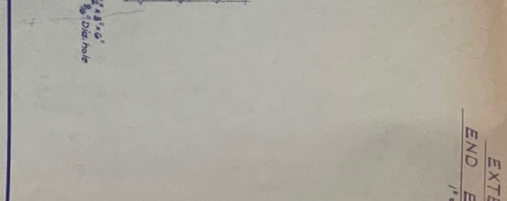
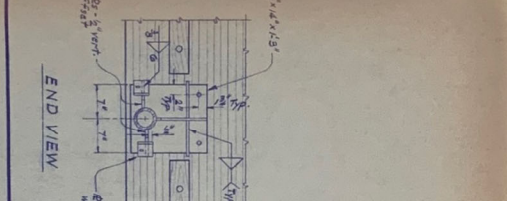
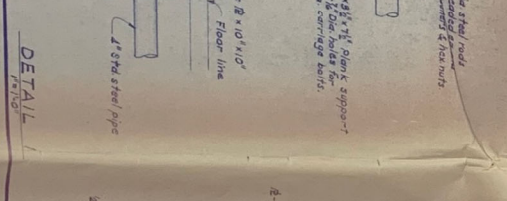
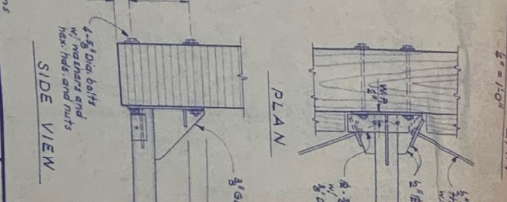
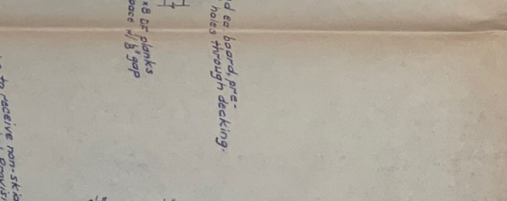
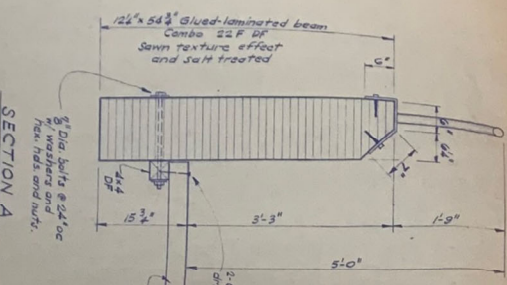
APPROVED  
DATE: MAY 9/75  
BY: [Signature]

APPROVED  
DATE: MAY 9/75  
BY: [Signature]

APPROVED  
DATE: MAY 9/75  
BY: [Signature]

APPROVED  
DATE: MAY 9/75  
BY: [Signature]

APPROVED  
DATE: MAY 9/75  
BY: [Signature]



**GEORGE S. NOLTE AND ASSOCIATES**  
SAN JOSE  
WALNUT CREEK  
SAN FRANCISCO  
SAN DIEGO

**BRIDGE DETAILS**  
ADOBEE CREEK  
AT THE SAN FRANCISCO WATER DEPARTMENT BRIDGE OF MAY CALIFORNIA

30.761

AS BUILT  
MICROFILMED  
DATE: JUL 1 1981  
ROLL 10 FRAME 58