

Downtown Park

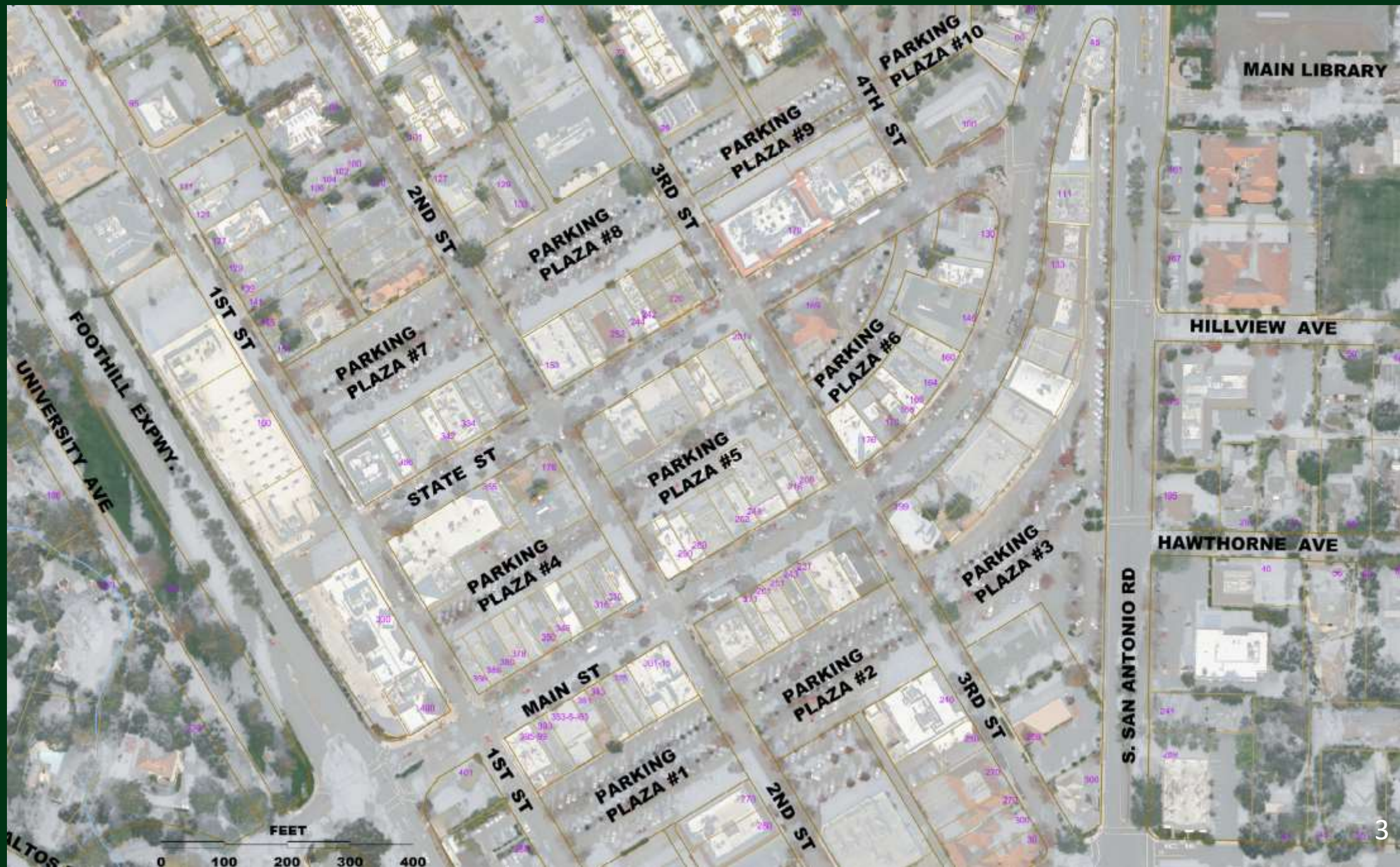
City Council Meeting
April 7, 2024



Background

- City Council directed staff to evaluate the potential for at-grade park space with parking located underground within downtown as a priority for 2024





MAIN LIBRARY

HILLVIEW AVE

HAWTHORNE AVE

S. SAN ANTONIO RD





Parking Plaza #1 and #2



Parking Plaza #3

MAIN LIBRARY

HILLVIEW AVE

HAWTHORNE AVE

S. SAN ANTONIO RD

Central Parking Plazas: Parking Plaza #4, #5 & #6





North Parking Plazas:
Parking Plaza #7, #8, #9 & #10

Preferred Location: Parking Plaza #1 and #2



Existing Conditions



Parking Stalls

Location	Standard	ADA	Total
Plaza 1	127	4	131
Plaza 2	126	6	132
Total	253	10	263

Note: No current bicycle parking in either plaza



Parking Stalls



Overhead Utilities



Overhead Utilities



Trash Receptacles



Landscaping



Signage

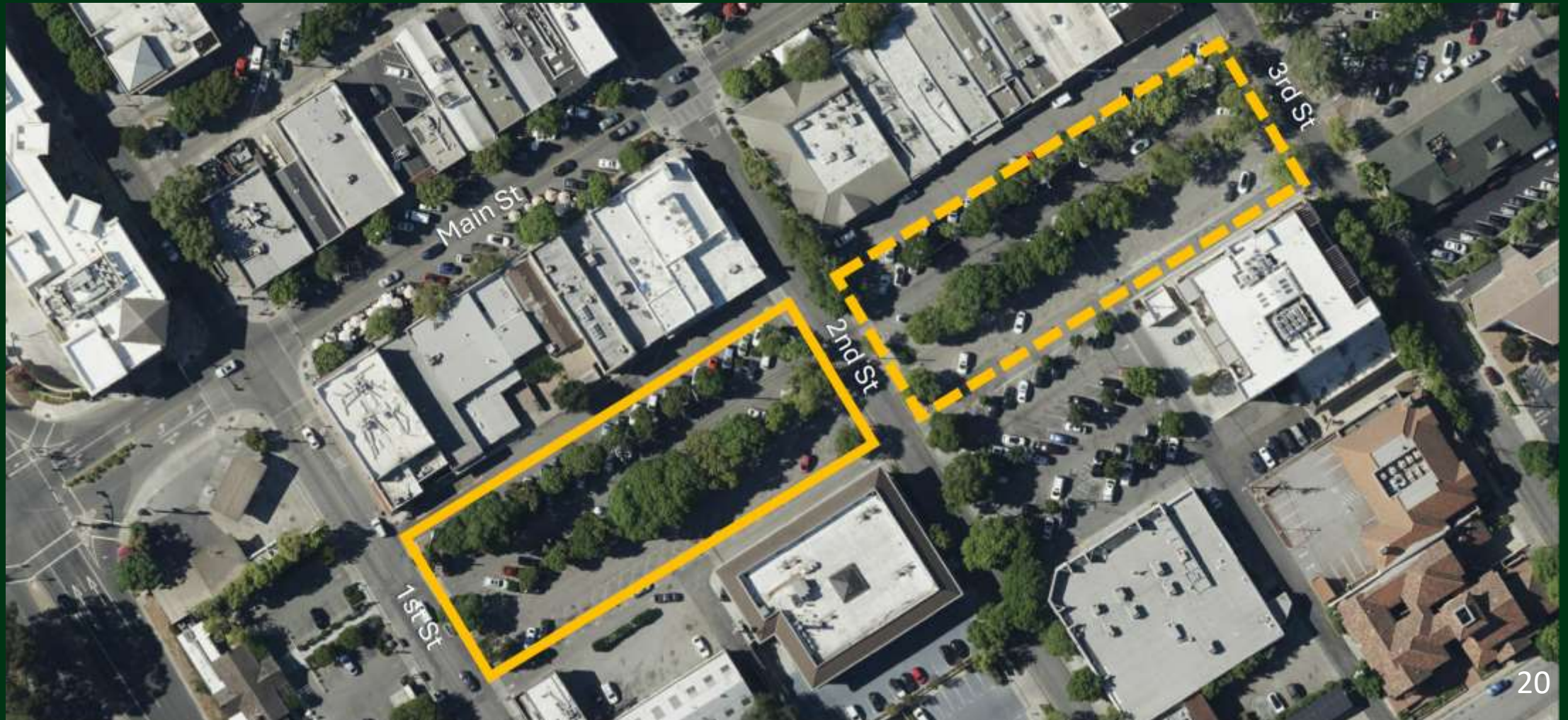








Existing Conditions



Proposed Park



Design Features



- 1 Central green** with sloped sides for seating, potential space for small events
- 2 Play area** for children
- 3 Central paved area** and pedestrian connection
- 4 Trees and landscaping** with seating
- 5 Amenity buildings** (elevators from parking garage, restrooms, trash collection, etc.)
- 6 Plaza** fronting new theatre
- 7 Ramp** to underground parking structure
- 8 Raised crosswalk** for traffic calming and pedestrian access
- 9 "Slow" streets** for multimodal use and servicing





Next Steps

- Community Outreach
- Design

