

Parking Restriction Around Los Altos High School

City Council | February 25, 2025





Staff Recommendation

1. Existing parking restrictions around Los Altos High School will be modified to 2-hour parking from 8:00 am to 12:00 pm, Monday through Friday. Almond Avenue is to remain as no parking at all times.
2. Existing no parking restriction from 8:00 am to 12:00 pm will remain north of Jardin Drive to approximately 500' north of Jardine along Panchita Way, Los Ninos Way, Distel Drive, Casita Way and Alicia Way.
3. Staff is granted permission to install 2-hour parking from 8:00 am to 12:00 pm, Monday through Friday at other location deemed necessary to address parking issue around Los Altos High School.

Parking Issues





Student Parking Impact Map



Areas where student parking consistently impacted the residents



Parking Issues –Before Photo

Student Parking on Panchito Way Prior to Parking Restriction





Parking Issues –Before Photo

Student Parking on Los Ninos Way Prior to Parking Restriction





Parking Issues –Before Photo

Student Parking on Distel Drive Prior to Parking Restriction



Parking Issues –Before Photo

Student Parking on Casita Way Prior to Parking Restriction





Complaints from the Residents

The neighborhood north of Los Altos High School has been impacted by students parking on the street.

Some of the comments and complaints from the residents:

- Blocking the driveways pathways to homes.
- Impact to mail and trash pick up.
- Littering in the neighborhood.
- Parking on lawns.
- Excessive speeding.

Measures Residents Took to Limit Parking



Resident's Attempt at Parking Control



Fire Hydrant



Placement of Trash Can

Placement of Illegal No Parking sign

Resident's Attempt at Parking Control



Roping off the front

Background information about Los Altos High School impact to the neighborhood





Los Altos High School

1. Los Altos High School is approximately 31 acres.
2. The school is bound by residents to the east and west, Almond Ave to the south, and Jardin Drive to the north.
3. The school is currently fully built out with no means of expanding.





Los Altos High School

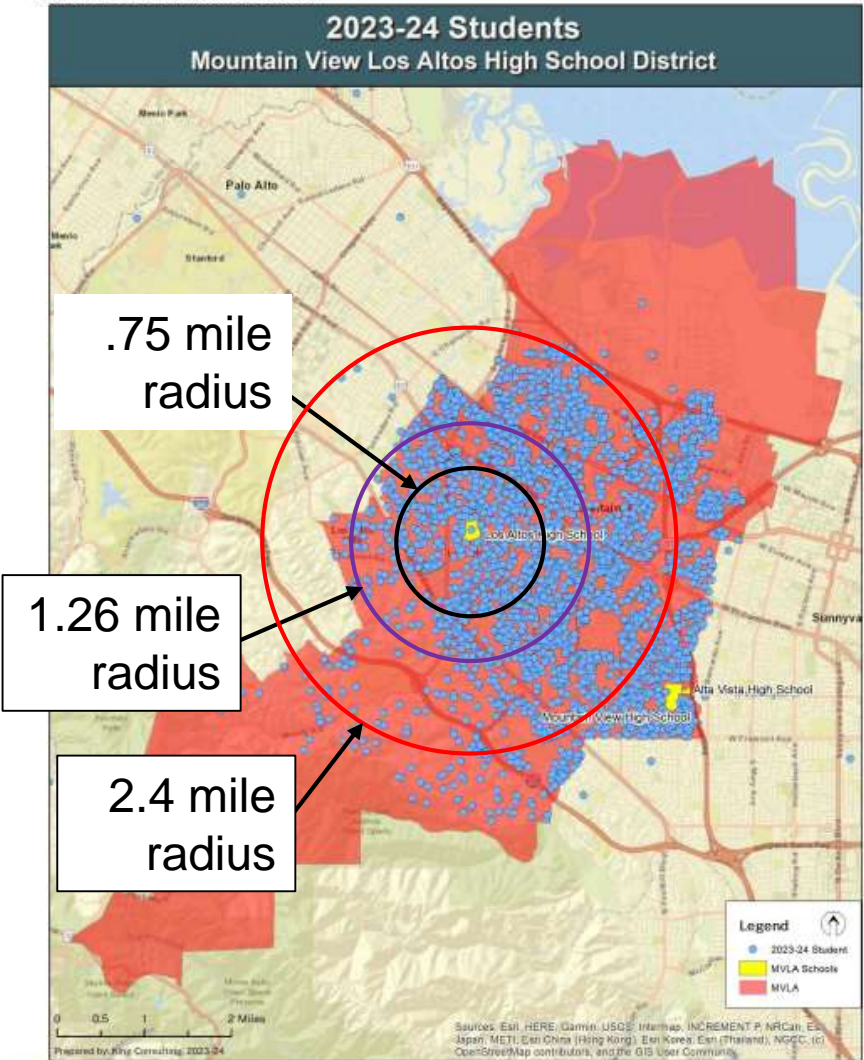
1. In 1995, the school had 1,600 student enrollment, 60 teachers and unknown number of support staff.
2. In 2022-2023 academic school year, 2,141 students were enrolled with 114 teachers and unknown number of support staff.
3. This represents a 30% increase.

Source (Public-School Review web page)



Los Altos High School – Current Population

Figure 22. 2023-24 Student Distribution

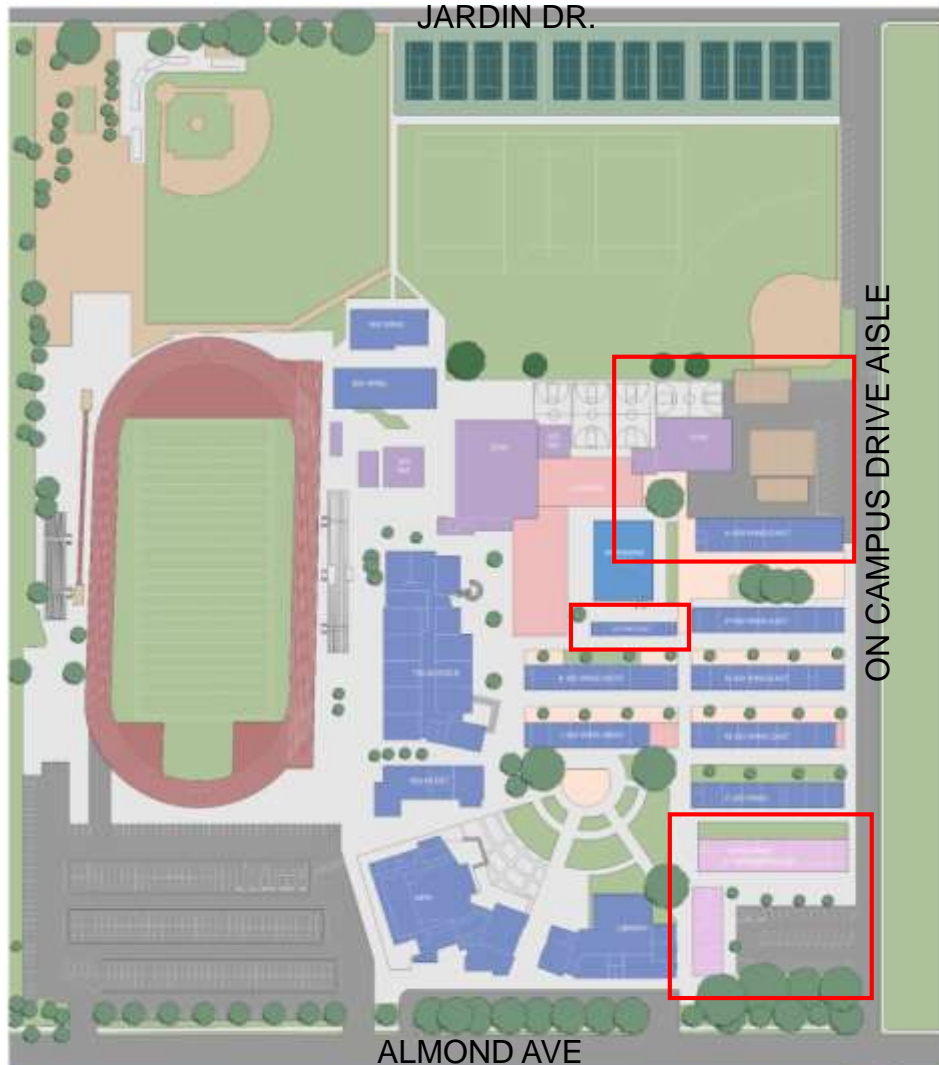




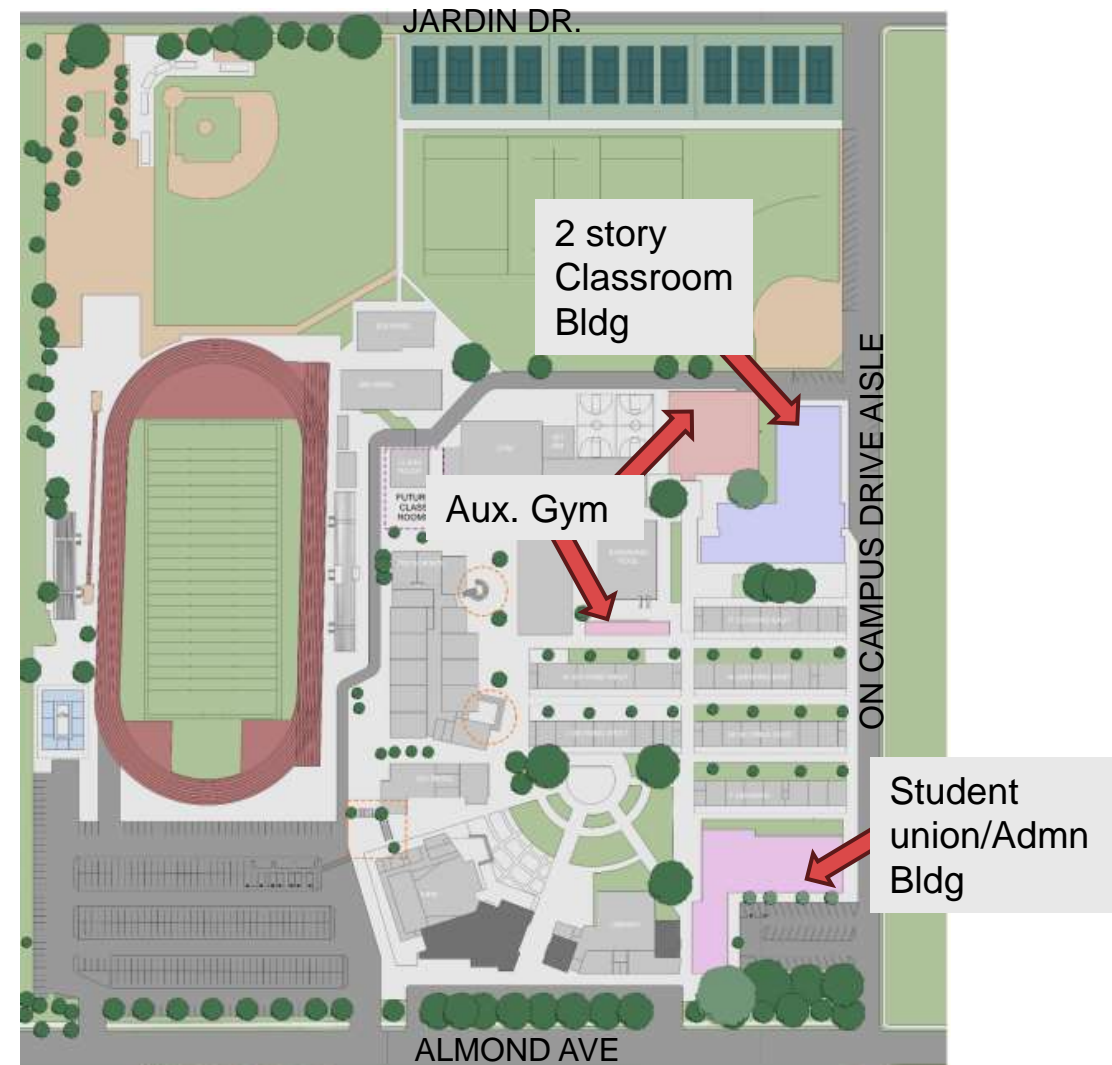
Los Altos High School

- To accommodate increased enrollment, in 2017-2018, Mountain View Los Altos High School District (MVLA) conducted a comprehensive facilities master plan to address facilities' needs and sustained enrollment growth.
- On June 5, 2018, the MVLA Board voted to place a \$295-million bond measure on the ballot to expand and upgrade existing buildings for both Los Altos and Mountain View High School for the following:
 1. Add additional classrooms.
 2. Additional facilities to expand existing programs.
 3. Update aging classrooms and replace old roofs, plumbing, and new electrical system.
 4. Expand libraries, cafeteria and other student support facilities.

Los Altos High School -Expansion



CAMPUS BEFORE THE BEGINNING OF CONSTRUCTION



PROPOSED IMPROVEMENTS



Los Altos High School – On-site Staging





Los Altos High School -Expansion

Projects currently underway in Phase II include:

- Construct Student Services buildings at Mountain View and Los Altos High Schools to provide academic, college and career, and wellness support for every student - *Completed*
- Complete auxiliary gymnasiums at Los Altos High Schools - *Completed*
- Replace aging grass athletic fields with synthetic, drought-resistant turf - *Completed*

Phase III projects estimated to begin Summer 2023 include:

- Modernize existing libraries to support 21st-century education - *To Be Determined (Fall 2026)*
- Upgrade cafeterias to provide healthy meals more efficiently - *Estimated Completion, Fall 2025*
- Improve capacity at existing gymnasiums and fund repairs needed for long-term student safety - *To Be Determined, currently in discussion*
- Increase capacity for music and arts programs to support a well-rounded education - *Estimated Completion, Fall 2025*

What does this have to do
with school parking?





Impact to School Parking

- Based on information from the Facility Master Plan, there is **no reduction of existing parking stalls**, and there are no plans for new additional parking spaces.
- The on-site construction could potentially be ongoing till 2026 or beyond. For this reason, the school may not be able to address the need for additional parking stalls
- On-site school circulation will be impacted until the construction is completed.
- The school expansion is necessary to accommodate the increase in student enrollment.
- The footprint of the school cannot expand, and all improvements must stay within the existing property.

Parking Restriction





Before New Parking Restriction



- No parking
- 8-4 No parking
- 8-2 No parking

Before New Parking Restriction



Current Parking Restriction

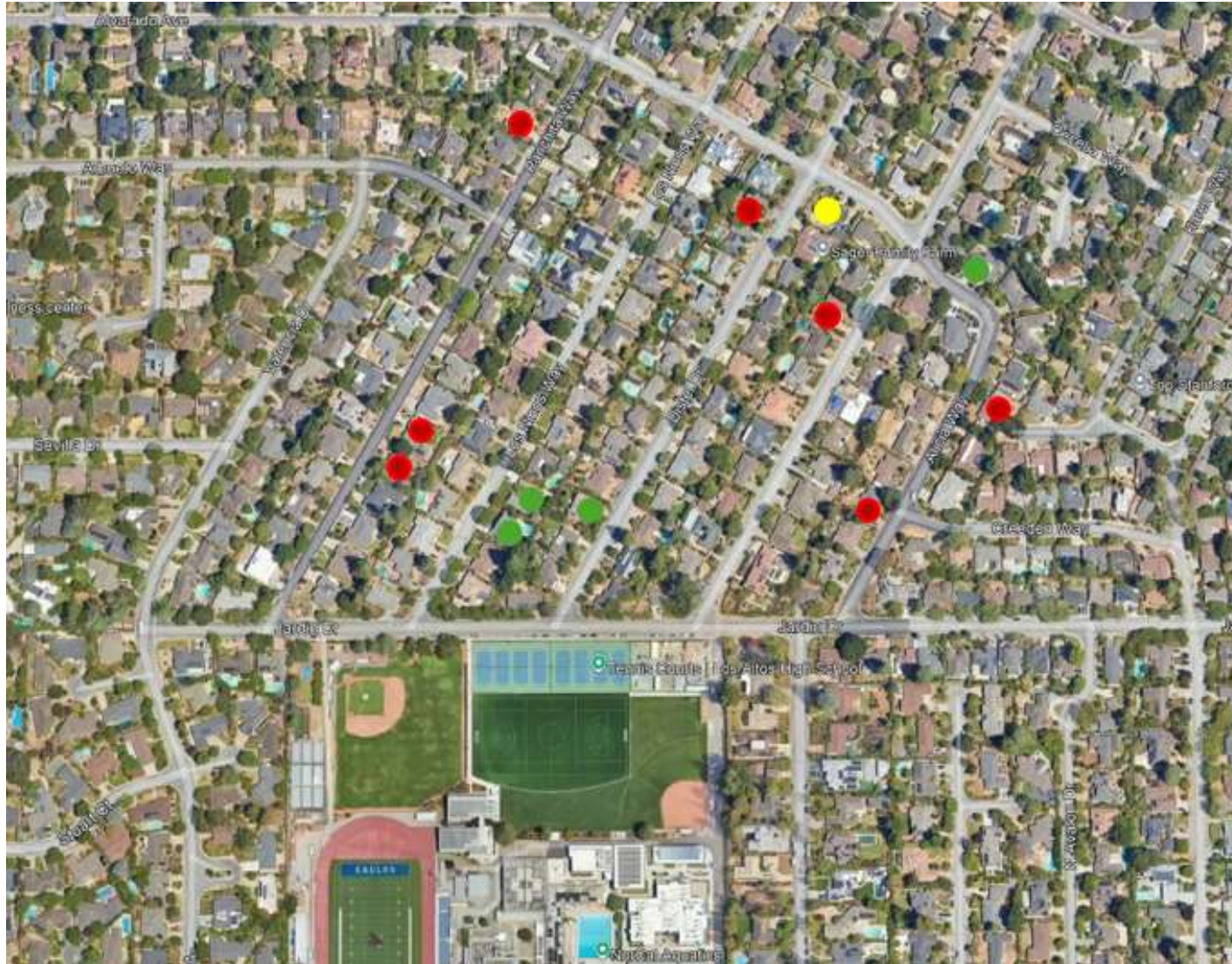


- No parking
- 8-12 No Parking
- 8-4 No parking
- 8-2 No parking

Current Parking Restriction



No Parking Sign Feedback Map



- Support
- Neutral
- Oppose


Impact to other neighborhood after parking restriction



Parking Restriction Impact



1. With the new parking restriction north of Jardine Drive, students have migrated to other areas.
2. Prior to the new parking restriction, the residents had some impact.
3. The parking on the street is not as severe, and it is disbursed over a broader area.
4. It also appears that more students are being dropped off by their parents.

 Areas where students have migrated for street parking.

Hybrid Parking Restriction





Hybrid Parking Restriction



Areas where parking restrictions remain 8:00-12:00



Areas parking restriction for 2-hour parking from 8:00-12:00



Hybrid Parking Restriction



Areas where parking restrictions remain 8:00-12:00



Areas parking restriction for 2-hour parking from 8:00-12:00

Exception to Parking Restriction





Parking Restriction Impact

CITY	RESIDENTIAL	DURATION	Zone/District Specific	GUEST
Cupertino	Each vehicle is registered to an address	1 year	No	1 permit, max 24 hours
Sunnyvale	Limit of 3 parking permits	1 year	No	1 permit, max 24 hours
Mountain View	Each vehicle is registered to an address	1 year	Yes	Can purchase a day permit at the parking vending machine
Palo Alto	Each vehicle is registered to an address	1 year	No	Can purchase a day parking permit at the parking permit vending machine
Santa Clara County	Each vehicle is registered to an address	1 year	No	No guest parking permit
San Jose	Varies from 1 to unlimited based on Zone/District	1 year	Yes	Max 2 permits depending on Zone/District
San Mateo	1 permit for each licensed driver	2 year	No	1 permit good for 2 years

1. Exempts clearly identified commercial and delivery vehicles.
2. Home Services such as gardeners are exempt if active gardening can be visibly seen.
3. Sunnyvale provides an exemption to caregivers with proper documentation.

Conclusion





Conclusion

Los Altos High School:

1. The parking problem at Los Altos High School is **not** related to the current construction activity.
2. The school's enrollment has significantly increased since 1995. While the number of students will stabilize at the current rate, the need for parking will continue to exceed the number of parking stalls available.
3. The school cannot expand. To add additional parking spaces, it will need to remove some of the current school amenities. The school is landlocked, with homes and streets surrounding it.
4. The school falls under the jurisdiction of the State, and they are exempt from local zoning standards.
5. The **City cannot mandate or dictate to the school** that additional parking spaces must be constructed per the City's ordinance. The school is under the jurisdiction of the State Architect, who has different requirements.



Conclusion

Impact of Current Parking Restriction:

1. The traffic circulation appears to be calmer and orderly.
2. Students are no longer crossing Jardin Drive at Panchita Way, Los Ninos Way, Distel Drive, and Casita Way while dodging vehicles.
3. Students are now properly utilizing existing crosswalks, improving pedestrian safety.
4. Students racing to get the closest parking space to the school has significantly been reduced.
5. Students who are parking on the street have been “pushed” to other streets in the neighborhood. The parking issue is no longer concentrated in a small area. The street parking is dispersed over a wider area than before away from the school.