



**LOS ALTOS LIBRARY
COMMISSION**

CITY OF LOS ALTOS

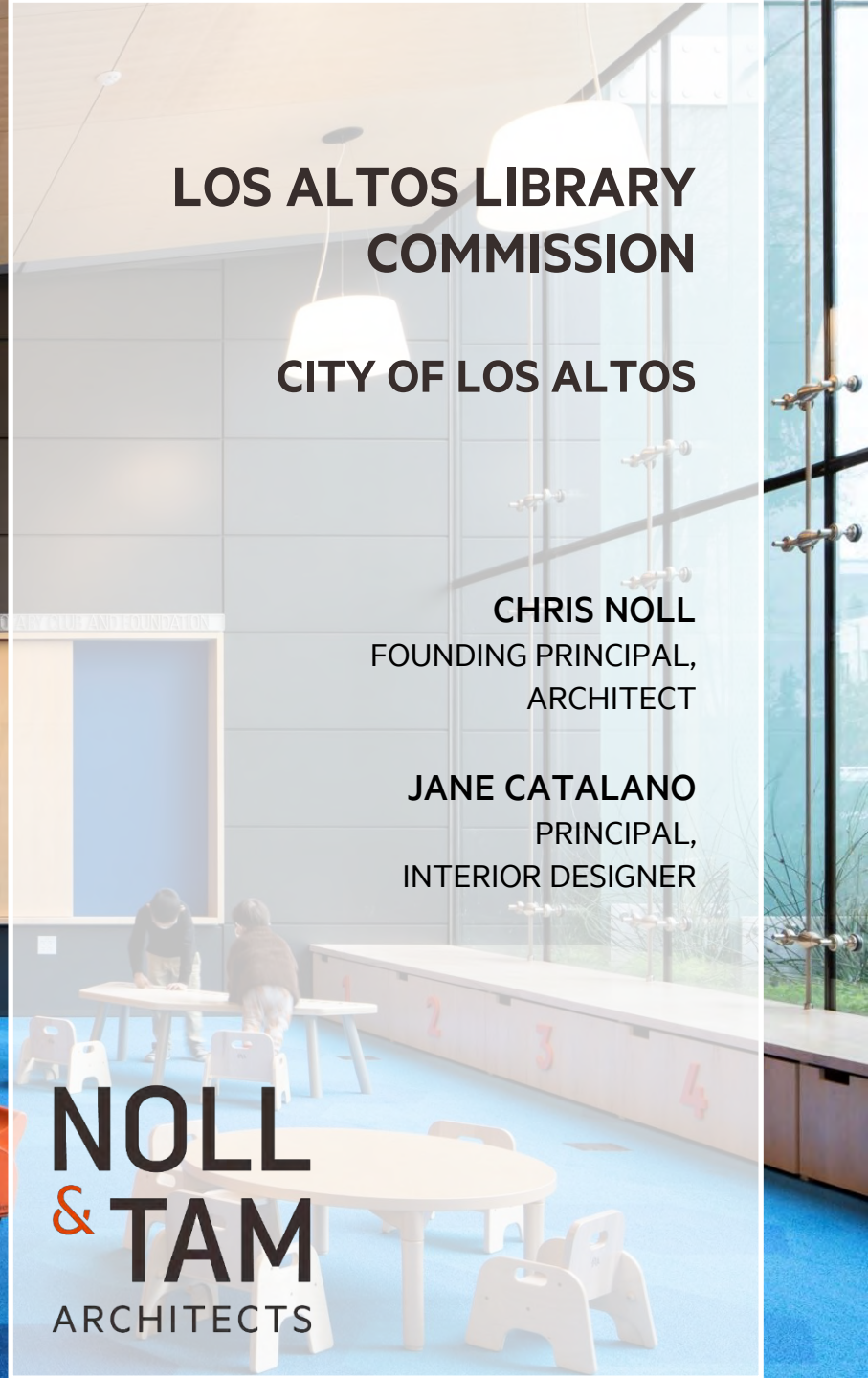
CHRIS NOLL

FOUNDING PRINCIPAL,
ARCHITECT

JANE CATALANO

PRINCIPAL,
INTERIOR DESIGNER

**NOLL
& TAM**
ARCHITECTS



Libraries Loved By Their Communities

NEW CONSTRUCTION

Capitola Branch Library
Castro Valley Library
Felton Library Interior Design
Half Moon Bay Library
Hayward Main Library & Community Learning Center
Los Gatos Library
Marina Branch Library
Morgan Hill Library
Mulford-Marina Branch Library, San Leandro
Portola Branch Library, San Francisco
Rohnert Park Library
Valley Hi North Laguna Library, Sacramento

RENOVATION AND EXPANSION

Albina Library, Portland OR
American Canyon Library
Bay Farm Island Branch, Alameda
Berkeley Central Library
Carmichael Branch Library
Freedom Branch Library, Watsonville
Golden Gate Branch Library, Oakland
Guerneville Library Refresh
Healdsburg Library Refresh
Live Oak Library Annex, Santa Cruz
Marin Branch Libraries Refresh
Martin Luther King Jr. Branch Library, Oakland
Menlo Park Library & Community Center Furniture
Mission Branch Library, Santa Clara
Mountain View Library
North Portland Library, Portland OR
Petaluma Library Refresh
Napa County Main Library
Rockridge Branch Library TeenZone, Oakland
Temescal Branch Library, Oakland
West End Branch, Alameda

MASTER PLANS AND CONCEPT DESIGN STUDIES

Belmont Public Library Master Plan & Grant Proposal
Berkeley Branch Libraries Master Plan
Coalinga-Huron Libraries
Dixon Library Master Plan & Concept Design
Huntington Beach Library Master Plan
Manteca Public Library Master Plan & Grant Proposal
Menlo Park Belle Haven Branch Library Study
Menlo Park Main Library Space Study
Oakley Library Visualization Study
Pittsburg Library Master Plan and Design
San Lorenzo Public Library Master Plan & Grant Proposal
San Rafael Albert Park Library & Community Center Study
San Rafael Public Libraries Study
Santa Cruz Downtown Library Study
Seaside Library Master Plan & Grant Proposal
Woodland Library Facility Master Plan



HAYWARD LIBRARY & COMMUNITY LEARNING CENTER



HAYWARD LIBRARY & COMMUNITY LEARNING CENTER



HAYWARD LIBRARY & COMMUNITY LEARNING CENTER



HAYWARD LIBRARY & COMMUNITY LEARNING CENTER



COMPUTERS

HAYWARD LIBRARY & COMMUNITY LEARNING CENTER



HAYWARD LIBRARY & COMMUNITY LEARNING CENTER



HAYWARD LIBRARY & COMMUNITY LEARNING CENTER



HAYWARD LIBRARY & COMMUNITY LEARNING CENTER



HAYWARD LIBRARY & COMMUNITY LEARNING CENTER



HAYWARD LIBRARY & COMMUNITY LEARNING CENTER



LOS GATOS LIBRARY





LOS GATOS LIBRARY



LOS GATOS LIBRARY



LOS GATOS LIBRARY

EXIT





HALF MOON BAY LIBRARY



HALF MOON BAY LIBRARY



HALF MOON BAY LIBRARY



open at smcl.org

HALF MOON BAY LIBRARY



HALF MOON BAY LIBRARY



HALF MOON BAY LIBRARY



HALF MOON BAY LIBRARY





HALF MOON BAY LIBRARY



HALF MOON BAY LIBRARY



HALF MOON BAY LIBRARY



HALF MOON BAY LIBRARY



HALF MOON BAY LIBRARY



HALF MOON BAY LIBRARY



HALF MOON BAY LIBRARY



SANTA CLARA MISSION BRANCH LIBRARY



SANTA CLARA MISSION BRANCH LIBRARY



INFORMATION

SANTA CLARA MISSION BRANCH LIBRARY



SANTA CLARA MISSION BRANCH LIBRARY



CHILDREN

SANTA CLARA MISSION BRANCH LIBRARY



SANTA CLARA MISSION BRANCH LIBRARY



CITY OF SANTA CLARA
MISSION BRANCH LIBRARY

SANTA CLARA MISSION BRANCH LIBRARY



LIBRARY 2005 WHARF ROAD SC PL

CAPITOLA LIBRARY



CAPITOLA LIBRARY

CAPITOLA BRANCH
LIBRARY

NO SPINALLS
RICE AND TRUCK
HOUSE
STAFF ENTRY ONLY

ELECTRICAL

LIBRARY

RETURNS

CAPITOLA BRANCH

CAPITOLA LIBRARY





information







Larry & Valenda "Linda" Smith



CAPITOLA LIBRARY

CAPITOLA LIBRARY



CAPITOLA LIBRARY



FELTON BRANCH LIBRARY



FELTON BRANCH LIBRARY









FELTON BRANCH LIBRARY

NOLL & TAM
ARCHITECTS



Los Altos
Community Center

LOS ALTOS COMMUNITY CENTER

Los Altos
Community Center

97



PLEASE
USE
TO
ENTER



LOS ALTOS COMMUNITY CENTER



LOS ALTOS COMMUNITY CENTER



LOS ALTOS COMMUNITY CENTER



LOS ALTOS COMMUNITY CENTER



LOS ALTOS COMMUNITY CENTER



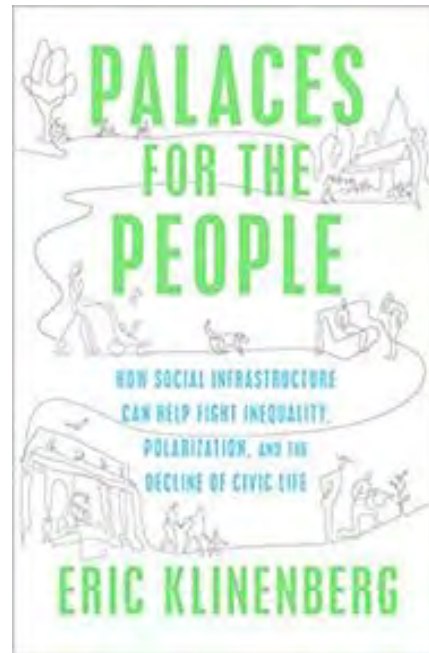
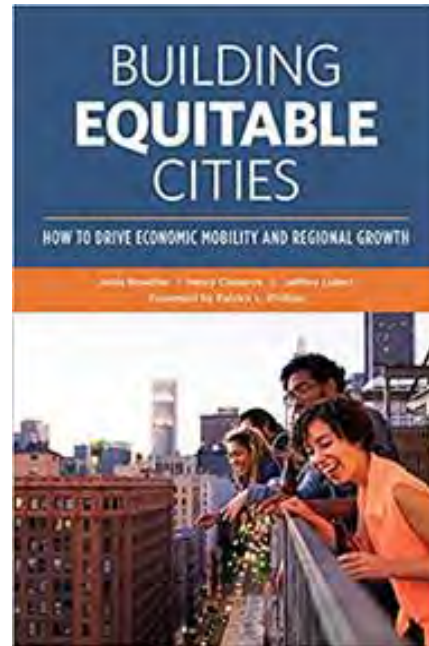
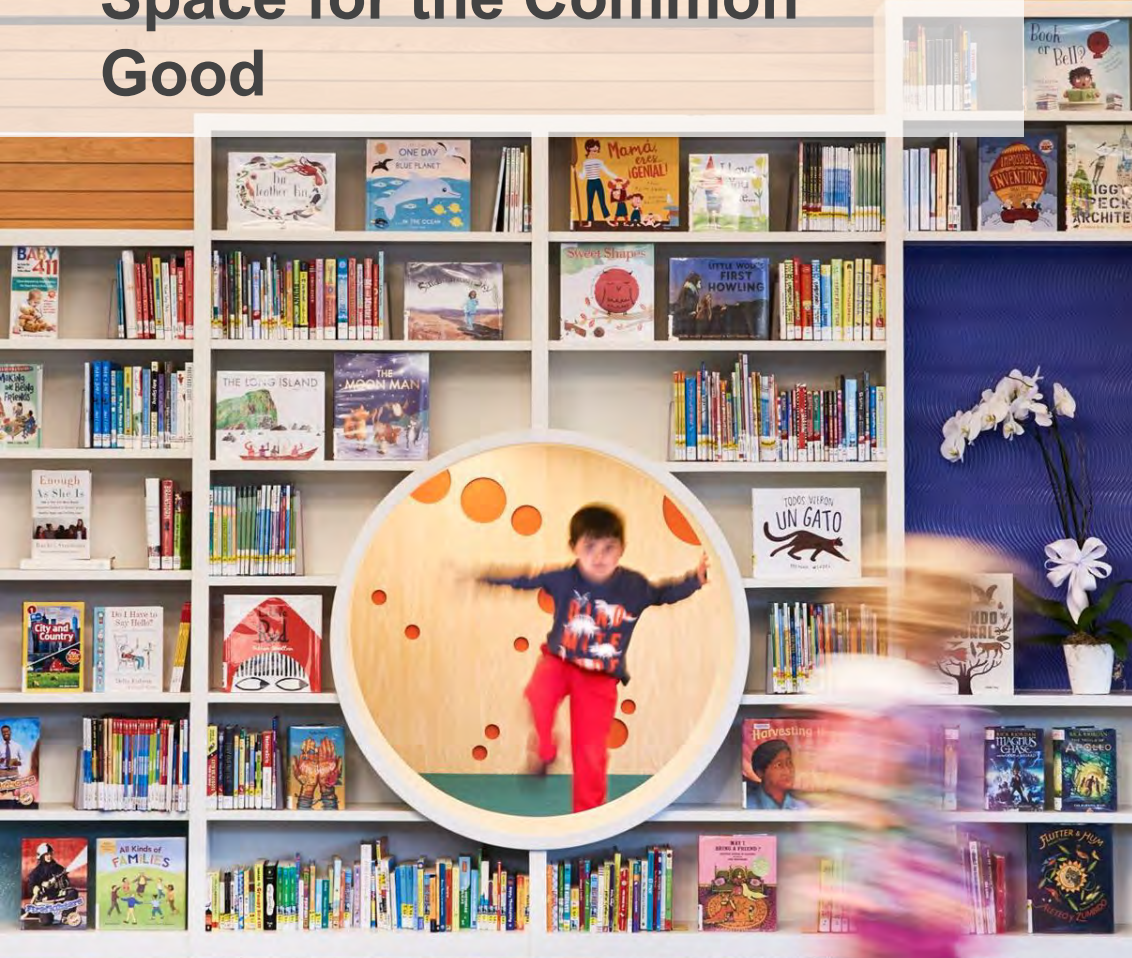
LOS ALTOS COMMUNITY CENTER



LOS ALTOS COMMUNITY CENTER

21ST CENTURY LIBRARIES

Designing Public Space for the Common Good



RISING TO THE CHALLENGE

Re-Envisioning Public Libraries




THE ASPEN INSTITUTE
Communications and Society Program

A RENEWED VISION

OF THE PUBLIC LIBRARY



America's public libraries have changed with the times with remarkable skill and agility over their long history. The nation's nearly 9,000 public library systems remain highly trusted community anchors where resources are universally available and everyone is welcome. Libraries are stable, reliable, nimble and always there.

RISING TO THE CHALLENGE 7

STRATEGIES FOR SUCCESS



Connecting people to the world in a different way is the challenge of the 21st century for public libraries in communities of all sizes. Libraries long ago established their place in the hearts of their communities. Sustaining and broadening that position requires new thinking about what a library is and how it drives opportunity and success in today's world.

32 STRATEGIES FOR SUCCESS

A 21st Century Library

- 21st Century library is a center of learning, innovation, and creativity to build a civil society
 - Its Mission is to provide equitable access to technology and to create a flexible environment to accommodate different styles and types of learners
 - Role of libraries and librarians – facilitator and educator
 - Library programs developed in support of community goals
 - Libraries are built around 3 key assets – People, Place, and Services
-

People | Place | Services

- **Librarian as navigator instead of gatekeeper**
- **Building human capital, relationships, and knowledge networks in the community**
- **Parents, Children, Students, Teens, Immigrants, Retirees, Job Seekers, Entrepreneurs**
- **Librarian as a guide: coach, mentor, facilitator, teacher**



People | Place | Services

- **Library as family room of the community**
- **Physical and digital community anchor**
- **Strengthen community identity**
- **Space is informed by reduction in physical materials, greater customer mobility, desire for more collaboration**
- **Flexible and adaptable spaces**
- **Spaces with tools and technology**



People | Place | Services

- **The Library is a platform upon which the community builds the services it wants**
- **Library as a central hub for learning and community connections**
- **Access to databases, homework assistance, employment resources, e-books, digital reference**
- **New services: workspaces for mobile workers, video conferencing, maker/creator spaces, digital media creation**



Elements of a 21st Century Library

- Spaces for Different Age Groups
 - Fewer Physical Collections
 - More Seating
 - Data and Power Everywhere
 - Easy Access – One Stop Service
 - Spaces for Innovation
 - Space for Individual Study & Collaboration
 - Modern Staff Area
 - IT Help
 - Access to Food
-

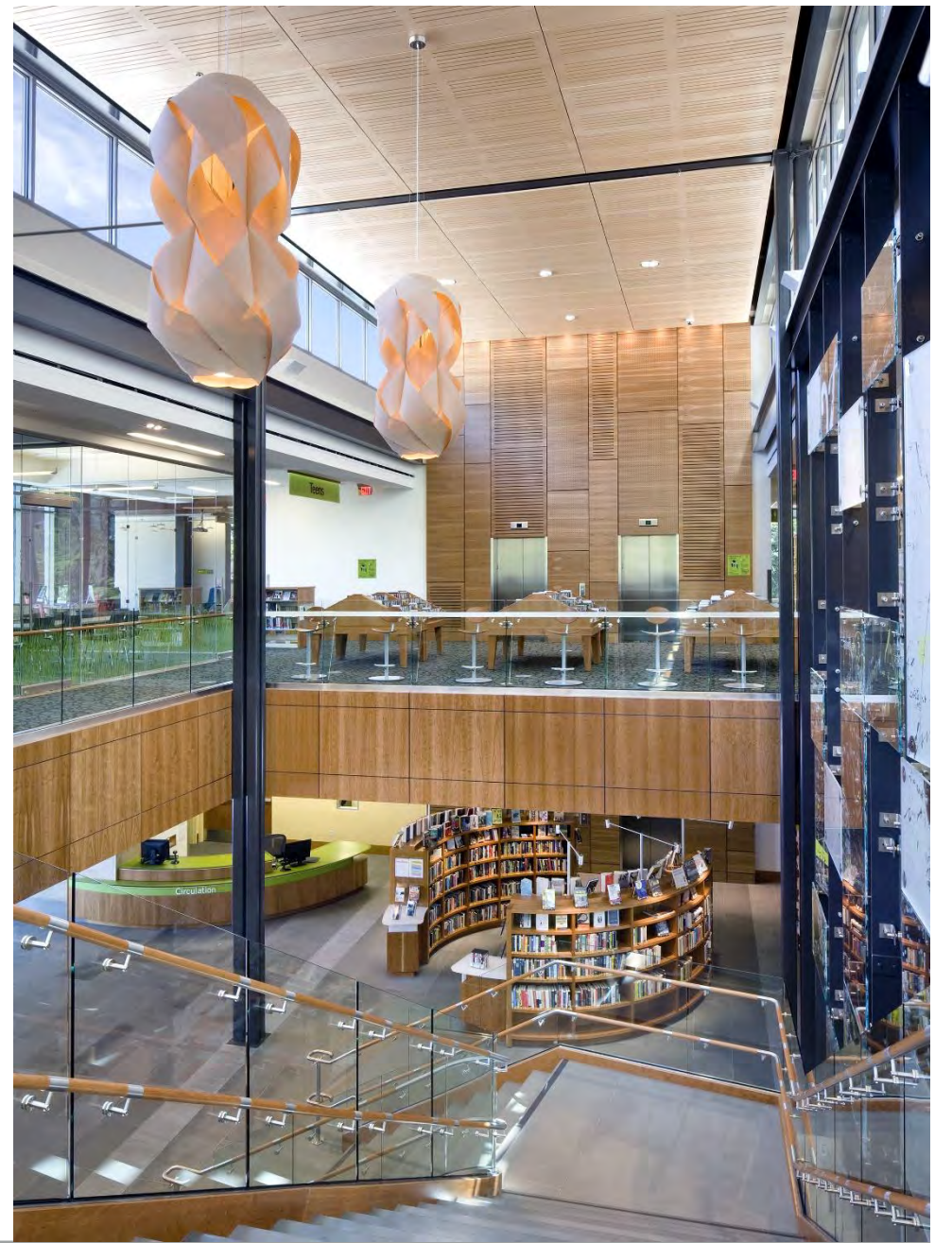
Entry Lobby



HAYWARD LIBRARY & COMMUNITY LEARNING CENTER



HALF MOON BAY LIBRARY

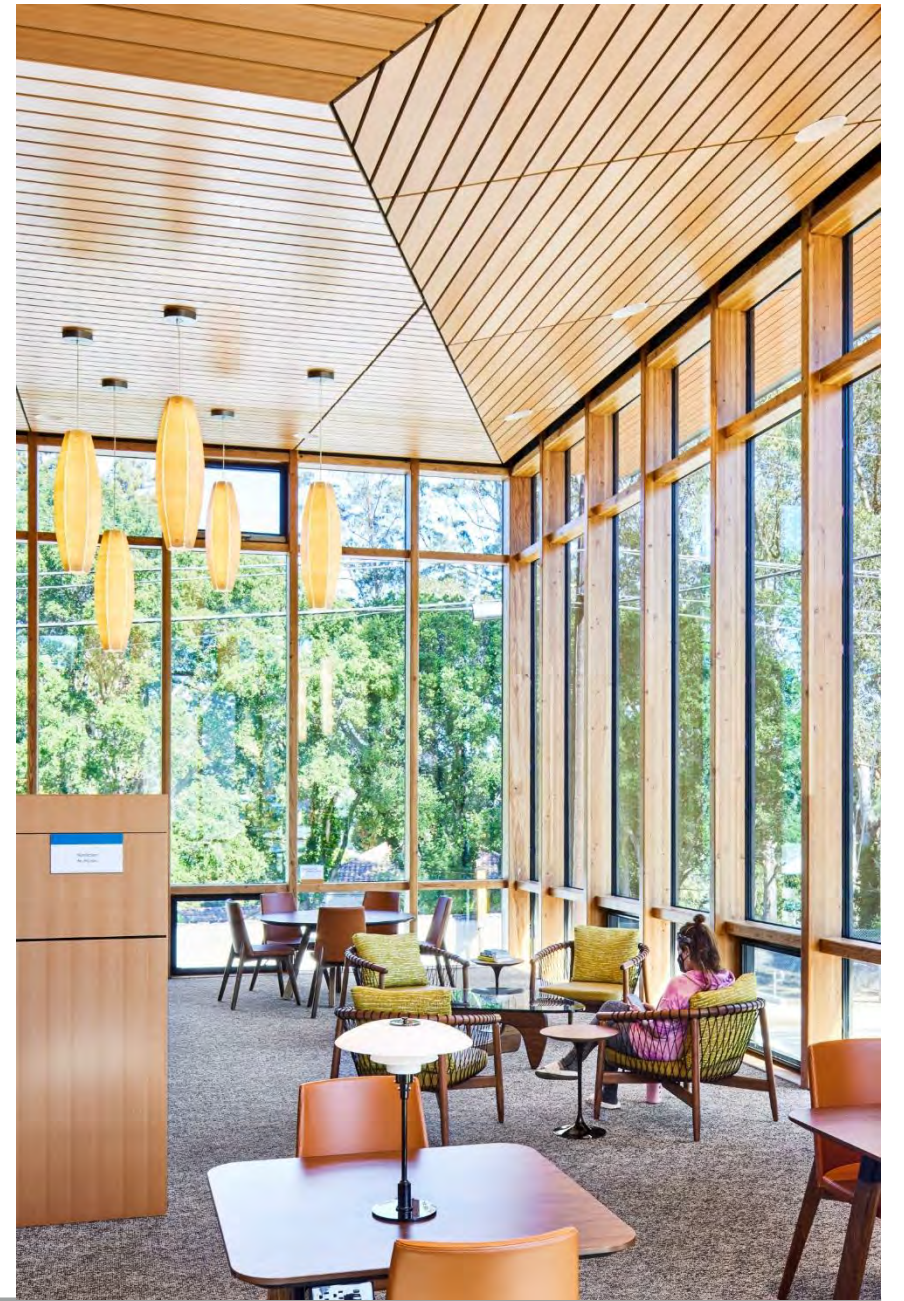


LOS GATOS LIBRARY

Community Living Room



LOS GATOS LIBRARY



CAPITOLA LIBRARY



CAPITOLA LIBRARY



SANTA CLARA MISSION BRANCH LIBRARY



HALF MOON BAY & FELTON LIBRARIES



BERKELEY CENTRAL LIBRARY

Children's Area



HALF MOON BAY LIBRARY



CHILDREN'S AREA



HAYWARD LIBRARY & COMMUNITY LEARNING CENTER

CHILDREN'S AREA



CAPITOLA LIBRARY

CHILDREN'S AREA



HAYWARD LIBRARY & COMMUNITY LEARNING CENTER

CHILDREN'S AREA



HALF MOON BAY LIBRARY

CHILDREN'S AREA



HAYWARD LIBRARY & FELTON LIBRARY



CHILDREN'S AREA



NAPA COUNTY MAIN LIBRARY

Teen Area

Y.O.D.A. Process





HAYWARD LIBRARY & COMMUNITY LEARNING CENTER

TEEN AREA



HALF MOON BAY LIBRARY

TEEN AREA



CAPITOLA LIBRARY

TEEN AREA



LOS GATOS LIBRARY

TEEN AREA

Meeting Spaces



HALF MOON BAY LIBRARY

COMMUNITY ROOM



FELTON BRANCH LIBRARY

COMMUNITY ROOM



LOS ALTOS COMMUNITY CENTER

COMMUNITY ROOM



SANTA CLARA MISSION BRANCH LIBRARY



LOS ALTOS COMMUNITY CENTER

Specialty Spaces



HALF MOON BAY LIBRARY

MAKER SPACE





HAYWARD LIBRARY & COMMUNITY LEARNING CENTER

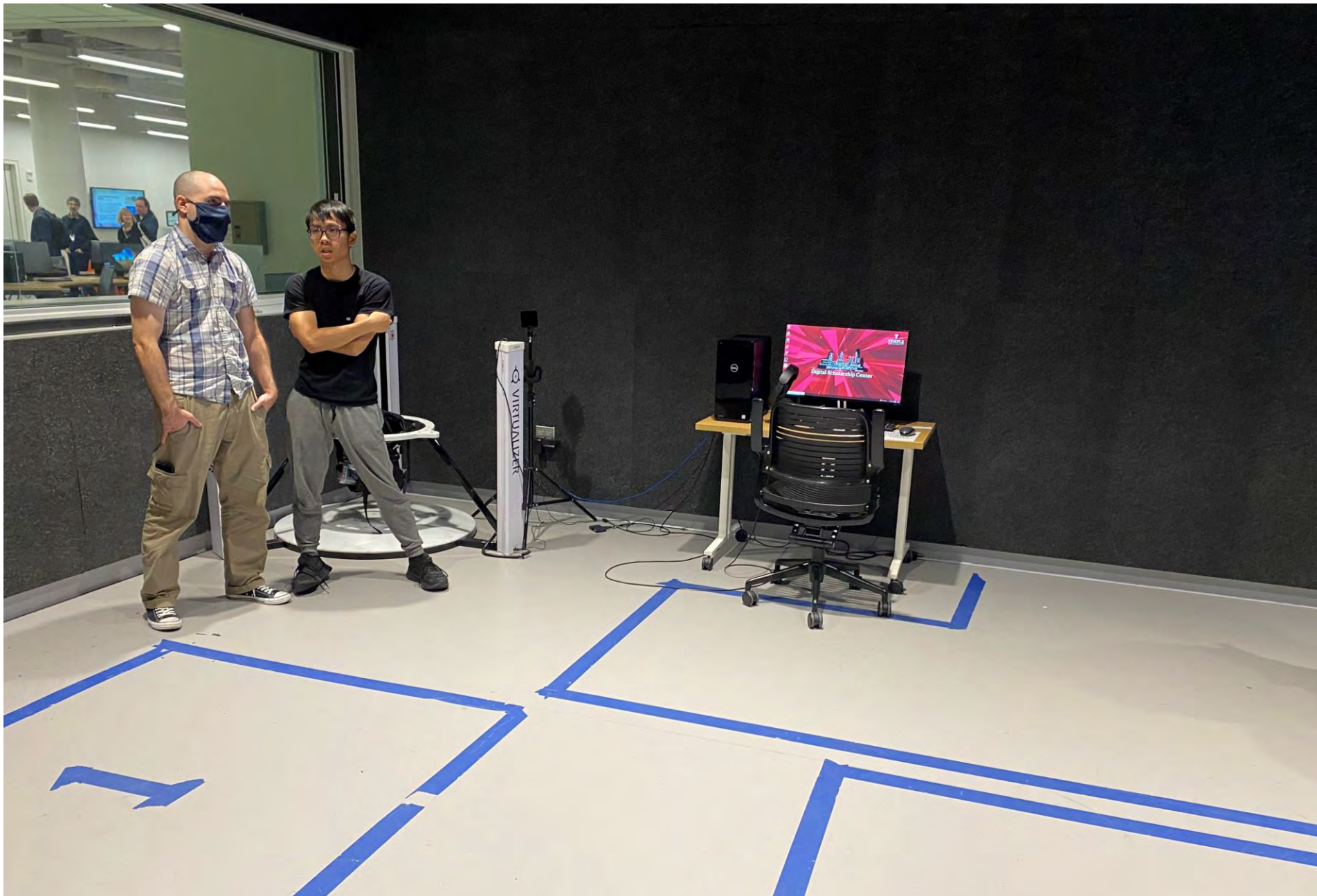
MEDIA/TECH SPACE



CASTRO VALLEY LIBRARY

CAFE







PHILADELPHIA FREE LIBRARY

CULINARY LITERACY CENTER



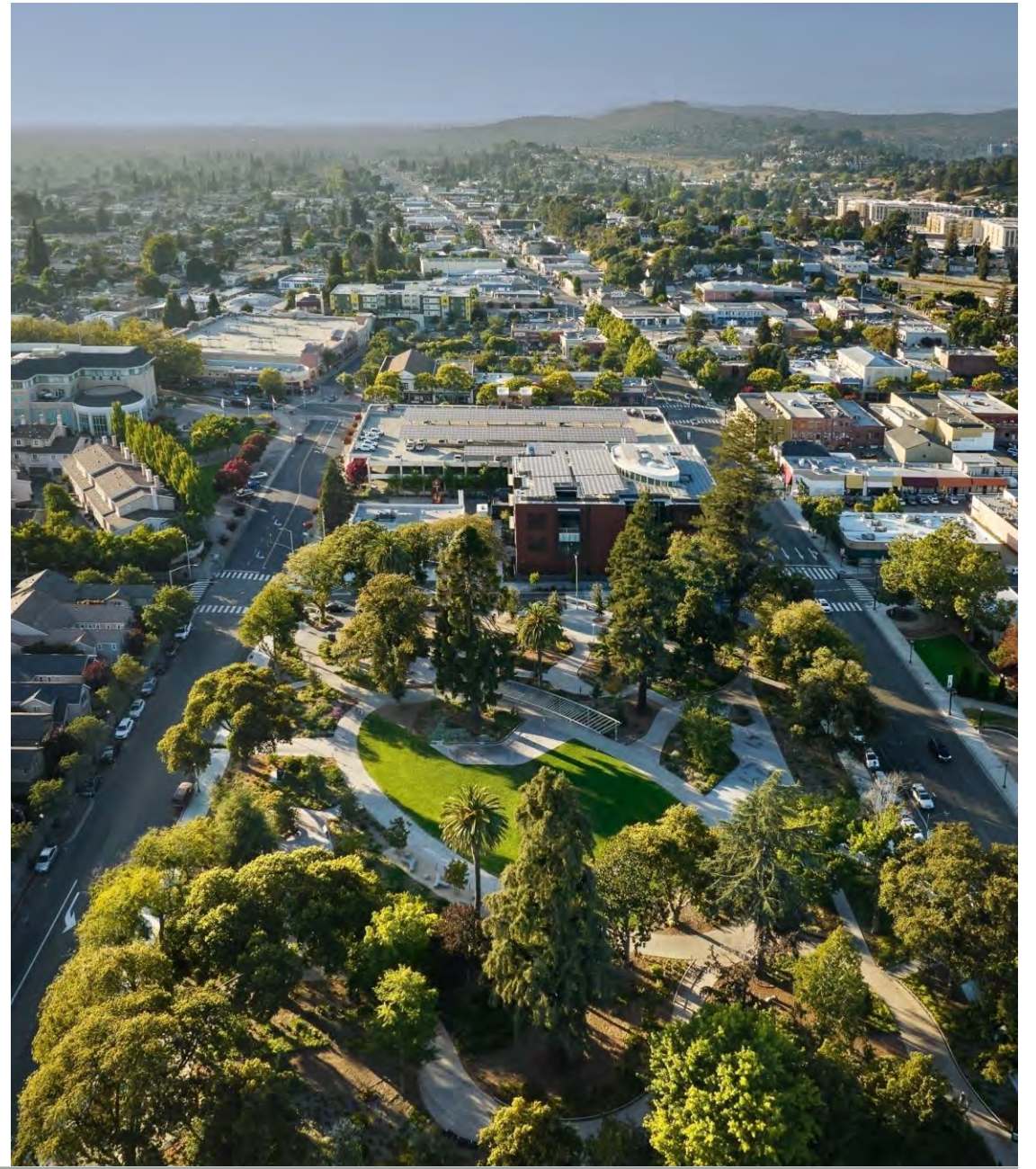
MISSOULA LIBRARY

CULINARY TEACHING KITCHEN

Indoor/Outdoor Spaces



HAYWARD LIBRARY



INDOOR/OUTDOOR



CAPITOLA LIBRARY

INDOOR/OUTDOOR



HALF MOON BAY LIBRARY

INDOOR/OUTDOOR



HALF MOON BAY LIBRARY



LOS GATOS LIBRARY & CARMICHAEL LIBRARY



INDOOR/OUTDOOR

Partnerships





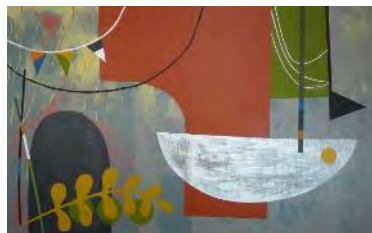
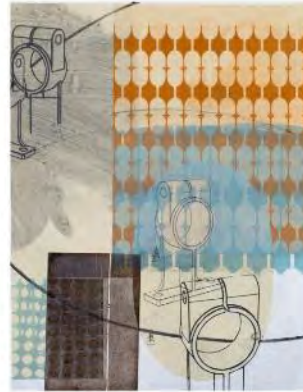
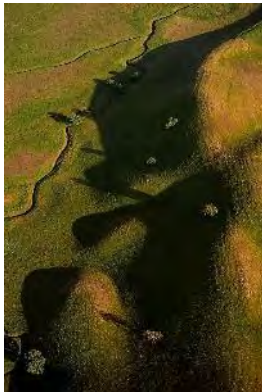
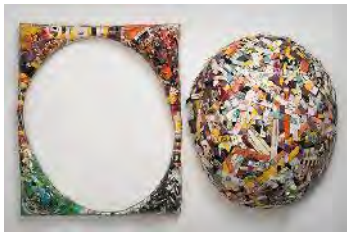
RECEPTION 208

Hours:
Sunday: Closed
Monday: 10 am to 6 pm
Tuesday: 10 am to 6 pm
Wednesday: 10 am to 6 pm
Thursday: 10 am to 6 pm
Friday: 10 am to 6 pm
Saturday: 10 am to 6 pm



Public Art









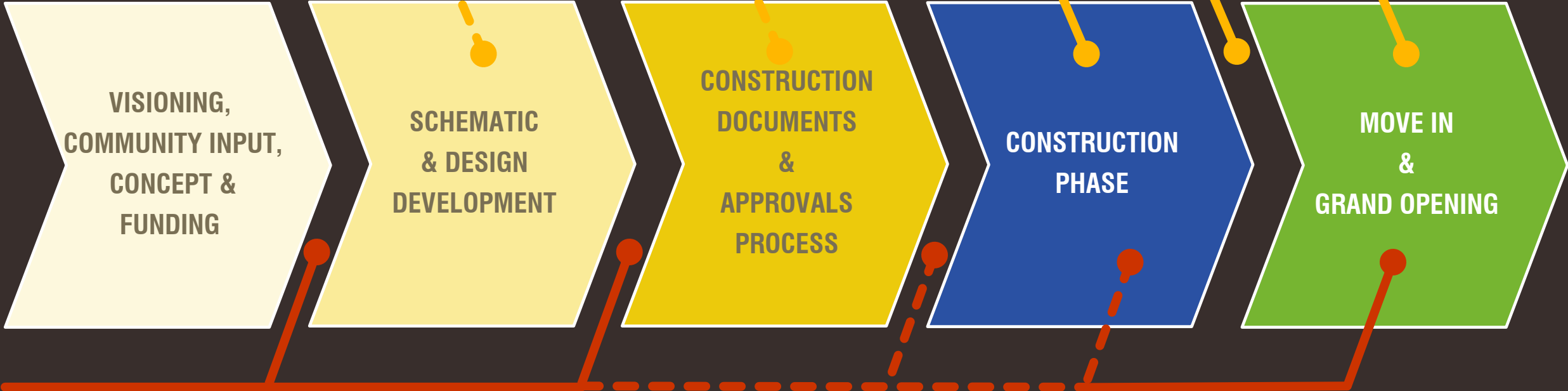


Planning & Building a New Library

- **Advocacy and Gathering Support**
- **Visioning, Concept, Design & Construction Process**
- **From Concept to Plans**
- **Understanding Budgets & Prioritizing for Value**

EARLY PRE-CONSTRUCTION

CONSTRUCTION TEAM ENGAGEMENT



LIBRARY PARTICIPATION PROCESS

TRADITIONAL LOUNGE

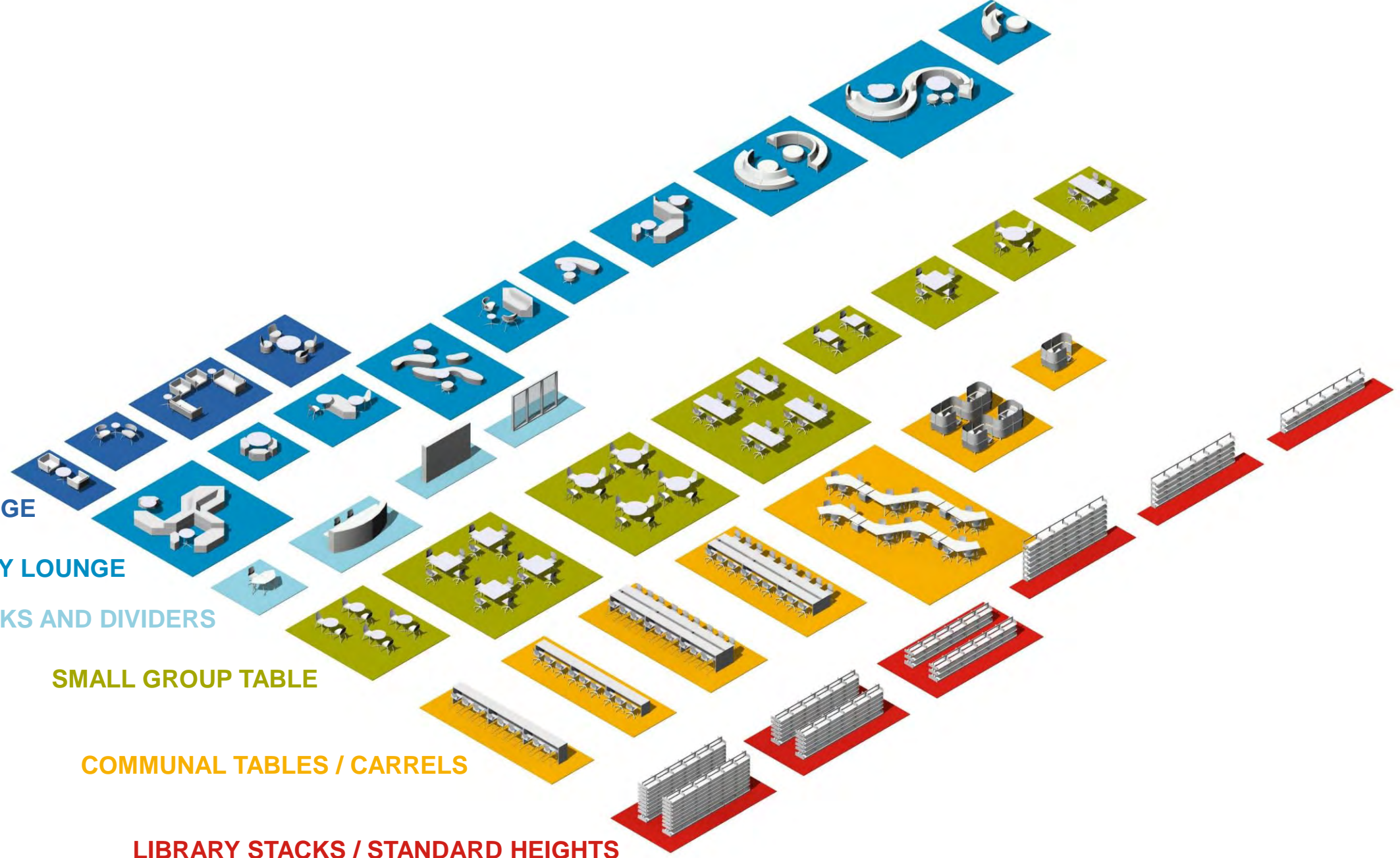
CONTEMPORARY LOUNGE

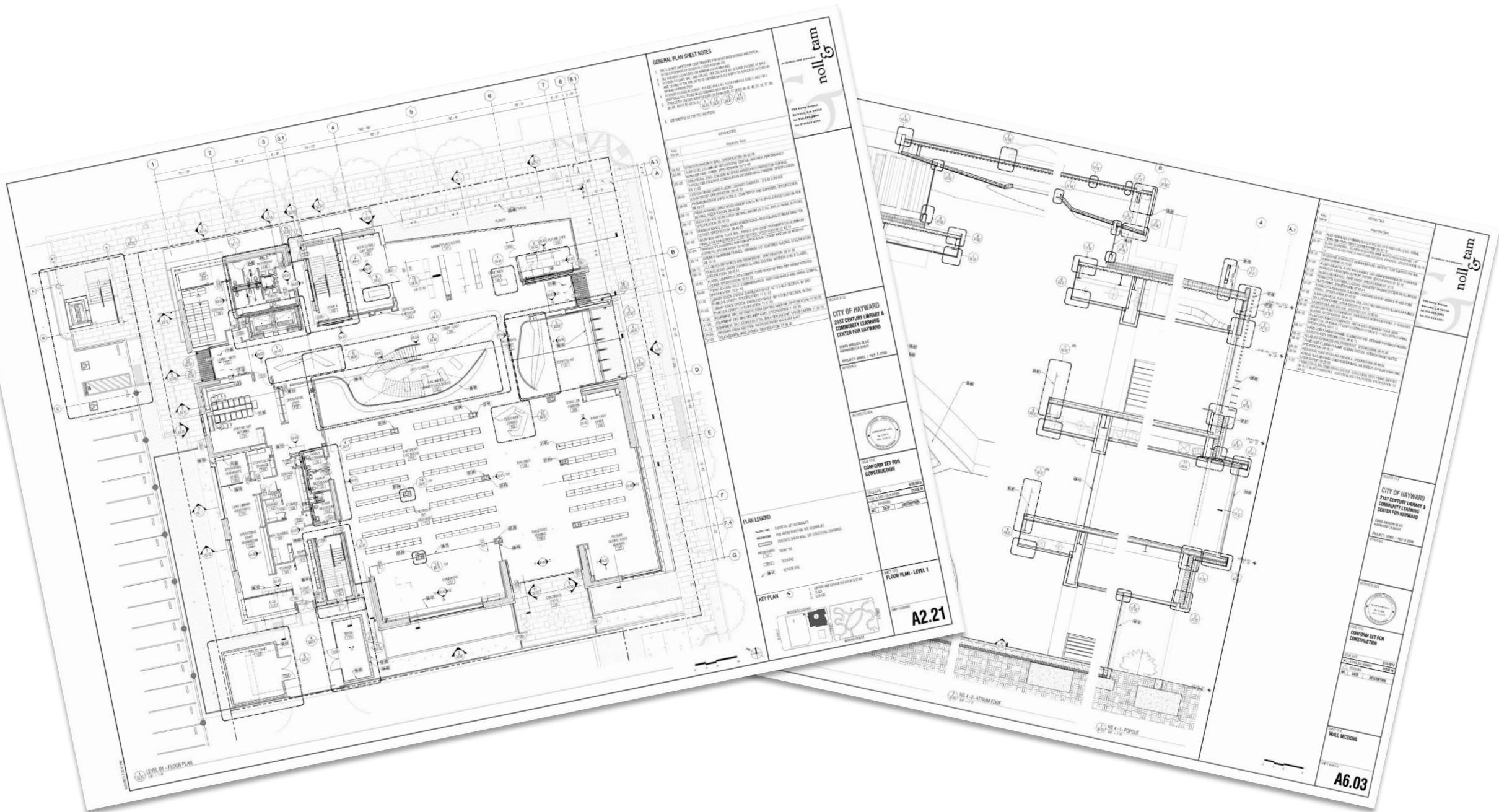
SERVICE DESKS AND DIVIDERS

SMALL GROUP TABLE

COMMUNAL TABLES / CARRELS

LIBRARY STACKS / STANDARD HEIGHTS





GENERAL PLAN SHEET NOTES

- SEE SHEET A2.01 FOR THE GENERAL NOTES AND SPECIFICATIONS FOR THE ENTIRE PROJECT.
- ALL WORK SHALL BE IN ACCORDANCE WITH THE 2019 CALIFORNIA BUILDING CODE (CBC) AND ALL APPLICABLE LOCAL ORDINANCES.
- ALL MATERIALS AND METHODS OF CONSTRUCTION SHALL BE APPROVED BY THE ARCHITECT AND SHALL BE IN ACCORDANCE WITH THE CBC AND ALL APPLICABLE LOCAL ORDINANCES.
- ALL WORK SHALL BE COMPLETED WITHIN THE SPECIFIED TIME FRAME AND SHALL BE IN ACCORDANCE WITH THE CBC AND ALL APPLICABLE LOCAL ORDINANCES.
- ALL WORK SHALL BE COMPLETED WITHIN THE SPECIFIED TIME FRAME AND SHALL BE IN ACCORDANCE WITH THE CBC AND ALL APPLICABLE LOCAL ORDINANCES.
- ALL WORK SHALL BE COMPLETED WITHIN THE SPECIFIED TIME FRAME AND SHALL BE IN ACCORDANCE WITH THE CBC AND ALL APPLICABLE LOCAL ORDINANCES.
- ALL WORK SHALL BE COMPLETED WITHIN THE SPECIFIED TIME FRAME AND SHALL BE IN ACCORDANCE WITH THE CBC AND ALL APPLICABLE LOCAL ORDINANCES.
- ALL WORK SHALL BE COMPLETED WITHIN THE SPECIFIED TIME FRAME AND SHALL BE IN ACCORDANCE WITH THE CBC AND ALL APPLICABLE LOCAL ORDINANCES.
- ALL WORK SHALL BE COMPLETED WITHIN THE SPECIFIED TIME FRAME AND SHALL BE IN ACCORDANCE WITH THE CBC AND ALL APPLICABLE LOCAL ORDINANCES.
- ALL WORK SHALL BE COMPLETED WITHIN THE SPECIFIED TIME FRAME AND SHALL BE IN ACCORDANCE WITH THE CBC AND ALL APPLICABLE LOCAL ORDINANCES.

**CITY OF HAYWARD
21ST CENTURY LIBRARY &
COMMUNITY LEARNING
CENTER FOR HAYWARD**

20200 HAYWARD BLVD
HAYWARD, CA 94541
PROJECT 18007 / PHASE 6 - CORE

PLAN LEGEND

- FINISHED FLOOR ASSEMBLY
- FOUNDATION
- CONCRETE FLOOR ASSEMBLY
- CONCRETE FLOOR ASSEMBLY
- CONCRETE FLOOR ASSEMBLY
- CONCRETE FLOOR ASSEMBLY
- CONCRETE FLOOR ASSEMBLY
- CONCRETE FLOOR ASSEMBLY
- CONCRETE FLOOR ASSEMBLY
- CONCRETE FLOOR ASSEMBLY

KEY PLAN

20200 HAYWARD BLVD
HAYWARD, CA 94541
PROJECT 18007 / PHASE 6 - CORE

FLOOR PLAN - LEVEL 1

A2.21

GENERAL PLAN SHEET NOTES

- SEE SHEET A2.01 FOR THE GENERAL NOTES AND SPECIFICATIONS FOR THE ENTIRE PROJECT.
- ALL WORK SHALL BE IN ACCORDANCE WITH THE 2019 CALIFORNIA BUILDING CODE (CBC) AND ALL APPLICABLE LOCAL ORDINANCES.
- ALL MATERIALS AND METHODS OF CONSTRUCTION SHALL BE APPROVED BY THE ARCHITECT AND SHALL BE IN ACCORDANCE WITH THE CBC AND ALL APPLICABLE LOCAL ORDINANCES.
- ALL WORK SHALL BE COMPLETED WITHIN THE SPECIFIED TIME FRAME AND SHALL BE IN ACCORDANCE WITH THE CBC AND ALL APPLICABLE LOCAL ORDINANCES.
- ALL WORK SHALL BE COMPLETED WITHIN THE SPECIFIED TIME FRAME AND SHALL BE IN ACCORDANCE WITH THE CBC AND ALL APPLICABLE LOCAL ORDINANCES.
- ALL WORK SHALL BE COMPLETED WITHIN THE SPECIFIED TIME FRAME AND SHALL BE IN ACCORDANCE WITH THE CBC AND ALL APPLICABLE LOCAL ORDINANCES.
- ALL WORK SHALL BE COMPLETED WITHIN THE SPECIFIED TIME FRAME AND SHALL BE IN ACCORDANCE WITH THE CBC AND ALL APPLICABLE LOCAL ORDINANCES.
- ALL WORK SHALL BE COMPLETED WITHIN THE SPECIFIED TIME FRAME AND SHALL BE IN ACCORDANCE WITH THE CBC AND ALL APPLICABLE LOCAL ORDINANCES.
- ALL WORK SHALL BE COMPLETED WITHIN THE SPECIFIED TIME FRAME AND SHALL BE IN ACCORDANCE WITH THE CBC AND ALL APPLICABLE LOCAL ORDINANCES.
- ALL WORK SHALL BE COMPLETED WITHIN THE SPECIFIED TIME FRAME AND SHALL BE IN ACCORDANCE WITH THE CBC AND ALL APPLICABLE LOCAL ORDINANCES.

**CITY OF HAYWARD
21ST CENTURY LIBRARY &
COMMUNITY LEARNING
CENTER FOR HAYWARD**

20200 HAYWARD BLVD
HAYWARD, CA 94541
PROJECT 18007 / PHASE 6 - CORE

**CONFIRM SET FOR
CONSTRUCTION**

DATE: _____

BY: _____

FOR: _____

WALL SECTIONS

A6.03



**LOS ALTOS LIBRARY
COMMISSION**

CITY OF LOS ALTOS

CHRIS NOLL

FOUNDING PRINCIPAL,
ARCHITECT

JANE CATALANO

PRINCIPAL,
INTERIOR DESIGNER

**NOLL
& TAM**
ARCHITECTS

