

**UNIVERSAL**  
TRUCK SALES L.L.C.

# 2021 HYUNDAI HL940AXT



USD **\$149,900**

Machine Location: [2845 Long Lake Rd](#) [Saint Paul, Minnesota 55113](#)

### Seller Information

Universal Truck Sales

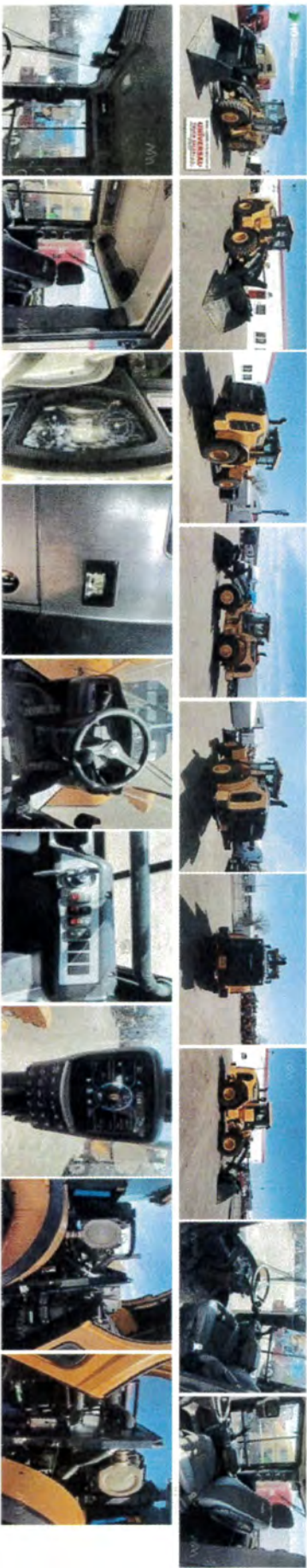
Contact: Felix Duran

Phone: **(612) 902-2776**

Saint Paul, Minnesota 55112

**(612) 902-2776**

[Video Chat](#)





[Hide Thumbnails](#)

## Description

2021 HYUNDAI HL940A XT. \*CUMMINS B6.7 ENGINE\* Clean Machine. \*LOW HOURS\* ... Only 477 Hours. Quick Attach Coupler. 3.0 YRD Bucket. \*2 YEAR WARRANTY REMAINING\*. Rear View Camera. Rental and Leasing Options Available. Call For Availability!

## Specifications

<b>Year</b>	2021	<b>Manufacturer</b>	HYUNDAI
<b>Model</b>	HL940AXT	<b>Hours</b>	477
<b>Serial Number</b>	HHKHWWL40CL0000198	<b>Condition</b>	Used
<b>Stock Number</b>	000198	<b>Hours Meter</b>	Accurate / Verified
<b>Bucket</b>	Yes	<b>Bucket Width</b>	102 in
<b>Bucket Capacity</b>	3 cu yd	<b>Operating Weight</b>	30,560 lb
<b>Breakout Force</b>	26,325 lb	<b>Tipping Load</b>	17,970 lb
<b>Auxiliary Hydraulics</b>	Yes	<b>Coupler</b>	Yes
<b>Quick Attach</b>	Yes	<b>Scales</b>	Yes
<b>Self Leveling Bucket</b>	Yes	<b>Cold Weather Package</b>	Yes
<b>Front Tire % Remaining</b>	90	<b>Rear Tire % Remaining</b>	90
<b>Ride Control</b>	Yes	<b>ROPS</b>	Enclosed
<b>Operator Controls</b>	Joystick	<b>A/C</b>	Yes
<b>A/C Condition</b>	Excellent	<b>Heater</b>	Yes
<b>Rearview Camera</b>	Yes	<b>Heated Seat</b>	Yes
<b>Drive</b>	4WD	<b>Horsepower</b>	155 HP
<b>Transmission Type</b>	Powershift	<b>Number of Speeds</b>	4
<b>Load Sensing</b>	Yes	<b>Engine Turbo</b>	Yes











**HL940A DIMENSIONS**

All dimensions are approximate.



Description	HL940A	HL940A XT
A Height to Top of Exhaust Pipe	3,310 (10' 10")	3,310 (10' 10")
B Height to Top of Cabin	3,300 (10' 10")	3,300 (10' 10")
C Height to Top of Product Link Antenna	3,445 (11' 4")	3,445 (11' 4")
D Height to Top of Warning Beacon	3,430 (11' 3")	3,430 (11' 3")
E Ground Clearance	417 (1' 4.4")	417 (1' 4.4")
F Wheelbase	3,000 (9' 10")	3,000 (9' 10")
G Overall Length (Without Bucket)	6,430 (21' 1")	7,020 (23')
H Shipping Length (With Bucket Level on Ground)	7,600 (24' 11")	8,190 (26' 10")
I Hinge Pin Height at Carry Position	430 (1' 5")	600 (1' 12")
J Hinge Pin Height at Maximum Lift	3,820 (12' 6")	4,425 (14' 6")

Unit : mm (ft/in)

Description	HL940A	HL940A XT
K Lift Arm Clearance at Maximum Lift	3,235 (10' 7")	3,840 (12' 7")
L Dump Clearance at Maximum Lift and 45° Discharge	2,765 (9' 1")	3,370 (11' 1")
M Reach at Maximum Lift and 45° Discharge	1,095 (3' 7")	1,090 (3' 7")
N Dump Angle at Maximum Lift and Dump (on Stops)	48	47
O Roll Back Angle	Ground	42
	Carry	47
P Clearance Circle (Diameter) to Outside of Tires	10,910 (35' 10")	10,910 (35' 10")
Q Clearance Circle (Diameter) to Inside of Tires	5,910 (19' 5")	5,910 (19' 5")
R Width Over Tires (Unloaded)	2,450 (8')	2,450 (8')
R1 Overall Width (with bucket)	2600 (8' 6")	-
S Tread Width	1,930 (6' 4")	1,930 (6' 4")

**HL940A OPERATING SPECIFICATIONS WITH BUCKETS**

Linkage Bucket Type Edge Type		General Purpose Pin On		General Purpose Hook on	High Lift Linkage Change
		Bolt-On Cutting Edges	Bolt-On Cutting Edges	Bolt-On Cutting Edges	
Capacity - Rated	m³	2.3	2.1	2.3	-
	yd³	3.0	2.7	3.0	-
Capacity - Rated at 110% Fill Factor	m³	2.5	2.3	2.5	-
	yd³	3.3	3.0	3.3	-
Width	mm	2,600	2,550	2,600	-
	ft/in	8' 6"	8' 4"	8' 6"	-
Dump Clearance at Maximum Lift and 45° Discharge	mm	2,765	2,795	2,640	+605
	ft/in	9' 1"	9' 2"	8' 8"	+1' 12"
Reach at Maximum Lift and 45° Discharge	mm	1,095	1,065	1,220	-5
	ft/in	3' 7"	3' 6"	4'	-0.2"
Digging Depth	mm	90	90	90	+40
	ft/in	3.5"	3.5"	3.5"	+1.6"
T Shipping Length (with Bucket)	mm	7,600	7,560	7,775	+590
	ft/in	24' 11"	24' 10"	25' 6"	+1' 11"
U Overall Height with Bucket	mm	5,185	5,145	5,395	+605
	ft/in	17'	16' 11"	17' 8"	+1' 12"
V Loader Clearance Circle	mm	12,180	12,110	12,280	+570
	ft/in	40'	39' 9"	40' 3"	+1' 10"
Static Tipping Load, Straight (No Tire Deflection)	kg	10,000	10,100	9,200	-1850
	lb	22,050	22,270	20,285	-4075
Static Tipping Load, Articulated (No Tire Deflection)	kg	8,600	8,700	7,900	-1550
	lb	18,960	19,180	17,420	-3415
Breakout Force	kg	11,800	12,230	10,200	+140
	lb	26,015	26,965	22,490	+310
Operating Weight*	kg	13,400	13,360	13,675	+460
	lb	29,545	29,455	30,150	+1015

\* All height and tire related dimensions are with standard 20.5 R25, \*\* L3 tires.

**HL940A BUCKET SELECTION CHART**

Standard Lift Arm - General Purpose Bucket

Type	m³ (yd³)	Material Density [ton/m³]														
		1.0	1.1	1.2	1.3	1.4	1.5	1.6	1.7	1.8	1.9	2.0	2.1	2.2	2.3	2.4
Bolt-On Cutting Edge	2.3 (3.0)	2.6 m³ (3.4 yd³)						2.2 m³ (2.9 yd³)								
Bolt-On-Teeth	2.1 (2.7)							2.4 m³ (3.1 yd³)						2.0 m³ (2.6 yd³)		
Cutting Edge (ISO Quick Coupler)	2.3 (3.0)	2.6 m³ (3.4 yd³)						2.2 m³ (2.9 yd³)								

High Lift Arm (XT) - General Purpose Bucket

Type	m³ (yd³)	Material Density [ton/m³]														
		1.0	1.1	1.2	1.3	1.4	1.5	1.6	1.7	1.8	1.9	2.0	2.1	2.2	2.3	2.4
Bolt-On Cutting Edge	2.3 (3.0)	2.6 m³ (3.4 yd³)						2.2 m³ (2.9 yd³)								
Bolt-On-Teeth	2.1 (2.7)							2.4 m³ (3.1 yd³)						2.0 m³ (2.6 yd³)		
Cutting Edge (ISO Quick Coupler)	2.3 (3.0)	2.6 m³ (3.4 yd³)						2.2 m³ (2.9 yd³)								

115% 100% 95%



# SPECIFICATIONS HL940A

## ENGINE

Maker / Model	CUMMINS / B6.7
Type	Tier 4F/ Stage V Emission Certified. 6 cylinder diesel engine with No Manual Regeneration.
Gross Power (SAE J1995)	156 HP (116 kW) at 2,200 rpm
Net Power (SAE J1349)	154 HP (115 kW) at 2,200 rpm
Max. Power	165 HP (123 kW) at 1,800 rpm
Peak Gross Torque (SAE J1995)	550 lbft (746 N-m) at 1,300 rpm
Displacement	6.7 L (408 cu in)

\*Stage V & Tier 4 Final Certified

## TRANSMISSION

Torque Converter Type	3-Elements, Single-stage, Single phase	
Tire	20.5 R25, ★★, L3	
Travel Speed, km/h (mph)	4 speed T/M	
Forward	1st	7.0 (4.3)
	2nd	12.8 (7.9)
	3rd	25.1 (15.6)
	4th	40.0 (24.9)
Reverse	1st	7.4 (4.6)
	2nd	13.5 (8.4)
	3rd	26.4 (16.4)

## AXLES

Drive System	Four-wheel drive system
Mount	Rigid front axle and oscillating rear axle
Rear Axle Oscillation	Oscillating ±11° degrees
Hub Reduction	Planetary reduction at wheel end
Differential	Conventional
Reduction Ratio	21.533

## HYDRAULIC SYSTEM

Type	Load sensing hydraulic system	
Pump	Variable displacement piston pump, 39.3 gpm	
Control Valve	2 spool (Bucket, Boom) 3 spool (Bucket, Boom, Aux)	
System Pressure	4,061 psi (280 bar)	
Lift Circuit	The valve has four functions: raise, hold, lower and float can adjust automatic kickout from horizontal to full lift.	
Tilt Circuit	The valve has three functions: tilt back, hold and dump. Can adjust automatic bucket positioner to desired load angle.	
Cylinder	Type: Double acting	
	No. of cylinders-bore x stroke:	
	Lift	2-110 × 738 mm (4.3" × 29")
	HL940A Tilt	125 × 560 mm (4.9" × 1' 10")
HL940A XT Tilt	125 × 580 mm (4.9" × 1' 11")	
Cycle Time	Raise: 5.5 sec, Dump: 1.9 sec Lower: 3.9 sec, Total: 11.3 sec	

\* Hyundai Bio Hydraulic Oil (HBHO) optional.

## OVERVIEW

Description	HL940A	HL940A XT
Operating Weight	13,601 kg (29,985 lb)	13,862 kg (30,560 lb)
Bucket Capacity	Heaped	2.3 m <sup>3</sup> (3.0 yd <sup>3</sup> )
	Struck	2.0 m <sup>3</sup> (2.62 yd <sup>3</sup> )
Breakout Force-Bucket	11,800 kg (26,015 lb)	11,940 kg (26,325 lb)
Tipping Load	Straight	10,471 kg (23,085 lb)
	Full Turn	9,003 kg (19,850 lb)
		7,050 kg (15,545 lb)

## TIRES

Type	Tubeless, loader design tires
Standard	20.5 R25, ★★, L3
	20.5-25 16PR L3
Options Include	20.5-25 16PR LS
	20.5 R25, ★, XHA

## BRAKES

Service Brakes	Hydraulically actuated, wet disc brakes actuate all 4 wheels independent axle-by-axle system. Self adjusting & wheel speed brake.
Parking Brake	Spring-applied, hydraulically released brake
Emergency Brake	When brake oil pressure drops, indicator light alerts operator and parking brake automatically applies.

## STEERING SYSTEM

Type	Load sensing hydrostatic articulated steering
Pump	Variable displacement piston pump, 149 lpm
System Pressure	210 bar (3,046 psi)
Cylinder	Double acting 2-65 × 429 mm (2.5" × 16.9")
Steering Angle	40° to both right and left angle, respectively
Features	Center-point frame articulation. Tilt and telescopic steering column.

## SERVICE REFILL CAPACITIES

Fuel Tank	220.0 liters (58 US gal)
Def Tank	30.1 liters (8.0 US gal)
Cooling System	37.0 liters (9.8 US gal)
Crankcase	18.0 liters (4.8 US gal)
Transmission	34.7 liters (9.2 US gal)
Front Axle	23.0 liters (6.1 US gal)
Rear Axle	23.0 liters (6.1 US gal)
Hydraulic Tank	90.0 liters (23.8 US gal)
Hydraulic System (Including Tank)	130.0 liters (34.3 US gal)

## CABIN

ROPS / FOPS Cabin Meet ISO 3471 and ISO 3449

## CAB NOISE LEVEL

Guaranteed noise level presented below can be differed depending on a range of factors such as operating condition, speed of a cooling fan, types of engine and so forth. Hearing protection shall be necessary if an operator is working in the improperly maintained cabin or exposed to a noisy environment by leaving doors and/or windows open.

With cooling fan speed at maximum value:

Operator sound pressure level (ISO 6396:2008)	68 dB(A)
Exterior sound power level (ISO 6395:2008)	108 dB(A)

\* Distance of 15 m (49.2 ft), moving forward in second gear ratio.



ENGINE	STD	OPT
<b>ENGINE, CUMMINS, B6.7</b>		
3 Stage air precleaner	•	
Alternator, 95A	•	
Fuel warmer	•	
Engine oil level dipstick gauge	•	
Fuel / water separator	•	
VGT (Variable Geometry Turbo)	•	
<b>CLEAN EMISSION MODULE</b>		
DCC, DPF and SCR	•	
<small>Active Emission Regeneration (No Manual Regeneration Required)</small>		
Stage V Certified Emissions	•	
EGR Free	•	
Automatic Regeneration	•	
<b>COOLING SYSTEM</b>		
Antifreeze	•	
Auto Reversing Fan (adjustable Time/ Interval Frequencies) w/ Manual Override	•	
Coolant Level Sight Gauge	•	
Fan guard	•	
Wide Fin Radiator	•	
<b>POWER TRAIN</b>	<b>STD</b>	<b>OPT</b>
<b>TRANSMISSION</b>		
Transmission F4/R3, computer controlled, electronic soft shift, auto-shift and kick-down features included	•	
Transmission oil sight level	•	
Wide Fin Transmission Oil Cooler	•	
<b>AXLE</b>		
Conventional (Rear)	•	
Hydraulic lock differential (Front)	•	
Limited slip differential (Front / Rear)		•
<b>BRAKE</b>		
Parking brake	•	
Service brake (Enclosed wet-disc)	•	
<b>TIRES</b>		
20.5 R25, ★★, L3	•	
20.5-25 16PR L3		•
20.5-25 16PR L5		•
20.5 R25, ★, XHA		•
<b>HYDRAULIC SYSTEM</b>	<b>STD</b>	<b>OPT</b>
Diagnostic pressure taps	•	
Hyundai Bio Hydraulic Oil (VG46)	•	
Hydraulic oil level sight gauge	•	
Hydraulic Oil VG32	•	
Hydraulic Oil VG46	•	
Wide Fin Hydraulic Oil Cooler	•	
<b>HYDRAULIC CONTROL</b>		
Fingertp	•	
Joystick	•	
<b>ELECTRO-HYDRAULIC CONTROL</b>		
Boom kickout, automatic	•	
Bucket positioner, automatic	•	
Extra piping for auxiliary function	•	
Fingertp	•	
Joystick	•	
Quick coupler piping	•	
Ride control system	•	
<b>CAB &amp; INTERIOR</b>	<b>STD</b>	<b>OPT</b>
<b>ALARMS, AUDIBLE AND VISUAL</b>		
Air filter clogging	•	
Battery voltage	•	
Brake oil pressure	•	
DEF low level	•	
Engine coolant level	•	
Engine coolant temperature	•	
Engine oil pressure	•	
Fuel level	•	
Hydraulic oil temperature	•	
Parking brake	•	
Service brake oil pressure	•	
Seat belt ON/OFF	•	
Transmission error	•	

CAB & INTERIOR	STD	OPT
<b>ALARMS, AUDIBLE AND VISUAL</b>		
Transmission oil temperature	•	
<b>GAUGES</b>		
Diesel Exhaust Fluid (DEF) level	•	
Engine coolant temperature	•	
Fuel level	•	
Horn, electric	•	
Speedometer	•	
Transmission oil temperature	•	
<b>INDICATOR LIGHTS</b>		
Clutch Cut Off	•	
Differential Lock	•	
Engine auto stop	•	
FNR	•	
High beam	•	
Parking brake	•	
Pilot cut off	•	
Ride control	•	
Seat belt ON/OFF	•	
Turning light	•	
<b>LCD DISPLAY</b>		
Clock and fault code	•	
DEF level	•	
DEF low level	•	
Engine rpm	•	
Horn, electric	•	
Job time and distance	•	
Operating hour counter	•	
Transmission gear range	•	
<b>BATTERIES</b>		
850CCA, 12V, 2PCS	•	
<b>LIGHTING SYSTEM</b>		
Brake lights(Counterweight)	•	
LED dome light	•	
2 Head lights on front tower	•	
2 Head lights (LED) on front tower	•	
2 Stop and tail lights	•	
4 Turn signals	•	
2 Working lights on front roof	•	
4 Working lights on front roof	•	
2 Working lights on rear roof	•	
4 Working lights (LED) on front roof	•	
2 Working lights (LED) on rear roof	•	
2 Working lights on grill	•	
2 Working lights (LED) on grill	•	
<b>SWITCHES</b>		
Battery master switch	•	
Differential Lock	•	
Emergency steering	•	
FNR shifter	•	
Hazard	•	
Parking	•	
Pilot cut off	•	
<b>SYSTEM MEMORY SETTINGS</b>		
Autolube, integrated in secondary display	•	
Auto position	•	
Beacon light	•	
Fine modulation	•	
Main light	•	
Mirror heat	•	
Quick coupler	•	
Rear wiper	•	
Ride control	•	
Work light	•	
Work load	•	
<b>IGNITION</b>		
Key	•	
Push Start Button	•	
<b>CAB (SOUND SUPPRESSED)</b>		
24V to 12V DC converter (20A)	•	
Coat hook	•	
Magazine pocket	•	
One door cab	•	
Radio / USB player	•	

CAB & INTERIOR	STD	OPT
<b>CAB(SOUND SUPPRESSED)</b>		
Rear view mirrors (1 Inside)	•	
Rear view mirrors (2 Outside, heated)	•	
Roller type sunshade (Front window)	•	
ROPS / FOPS CAB	•	
Rubber floor mat	•	
Steering column, tilt and telescopic	•	
Steering wheel with knob	•	
Tinted safety glass	•	
Wrist rest	•	
<b>DOOR</b>		
Door and cab locks, one key	•	
Doors, service access (Locking)	•	
Doors, service access (Remote control)	•	
<b>AUTOMATIC CLIMATE CONTROL</b>		
Air conditioner & heater	•	
Defroster	•	
Intermittent wiper and washer, front and rear	•	
<b>SEAT</b>		
3" Retractable seat belt & adjustable air suspension (Heated)	•	
<b>PERSONAL STORAGE SPACE</b>		
Console box	•	
Holder, can and cup	•	
<b>PEDALS</b>		
Accel pedal without ECO switch	•	
Dual-brake pedal	•	
One accelerator pedal	•	
One brake pedal	•	
<b>SAFETY</b>	<b>STD</b>	<b>OPT</b>
Alarm, back-up	•	
Boom safety lock	•	
Emergency steering	•	
Emergency stop	•	
Fire extinguisher	•	
<b>OBJECT DETECTION</b>		
AAVM - All Around View Monitoring	•	
IMOD (Intelligent Moving Object Detection)	•	
RADAR + Secondary Monitor	•	
<b>OTHERS</b>	<b>STD</b>	<b>OPT</b>
2nd Monitor	•	
3 Spool MCV	•	
Air Compressor	•	
Auto Engine Shut Down	•	
Auto Grease System	•	
Articulation Locking Bar	•	
Heavy Counterweight	•	
Hi-Mate, Satellite	•	
ISO Quick Coupler	•	
LED Beacon Lamp	•	
License Plate & 10W LED Lamp	•	
Lift and tie-down hooks	•	
Loader linkage, sealed	•	
Sun Shade on Rear Window of Cabin	•	
Vandalism protection caplocks	•	
Wheel Chocks	•	
<b>SAFETY</b>		
Handrails	•	
Ladders	•	
Platforms	•	
Steps	•	
<b>TELEMATICS</b>		
ECD (Engine Connected Diagnostics)	•	
Hi MATE	•	
<b>GUARDS</b>		
Belly-Pan Guard	•	
Crankcase	•	
Fenders (Front)	•	
Fenders (Rear)	•	
Transmission	•	

\* Standard and optional equipment may vary. Contact your Hyundai dealer for more information. The machine may vary according to international standards.  
 \* The photos may include attachments and optional equipment that are not available in your area.  
 \* Materials and specifications are subject to change without advance notice.  
 \* All imperial measurements rounded off to the nearest pound or inch.

PLEASE CONTACT



www.hceamericas.com  
 6100 Atlantic Blvd., Norcross, GA 30071  
 TEL (678) 823-7777 FAX (678) 823-7778

Printed in U.S.A.

1099-WL-SP 12/2020v8



# 524 P

Wheel Loader



JOHN DEERE







# Investment Proposal (Quote)

RDO Equipment Co.  
 11030 Holly Lane N  
 Dayton MN, 55311  
 Phone: (763) 294-7800 - Fax:

Proposal for:  
 CITY OF LONG LAKE  
 PO BOX 806  
 LONG LAKE, MN, 55356  
 HENNEPIN

Investment Proposal Date: 4/28/2023  
 Pricing Valid Until: 5/12/2023  
 Deal Number: 1655032  
 Customer Account#: 2855065  
 Sales Professional: Nick Andvik  
 Phone: (763) 294-7800  
 Fax:  
 Email: nandvik@rdoequipment.com

## Equipment Information

Quantity	Serial Number Stock Number	Hours (approx.)	Status / Year / Make / Model Additional Items	List Price Per Unit	Cash Price
1	TBD TBD	0	New 2023 JOHN DEERE 524P  6021DW 524 P-Tier Wheel Loader 0202 United States 0259 English 0351 Translated Text Labels 0400 Standard Loader 0451 Standard Z-BAR 0612 Level 2 Trim 0655 Level 2 Performance 8500 Cold Weather Package 8295 Heated And Powered Exterior Mirrors 8505 Guards - Transmission & Bottom 8502 Maintenance and Service Package 8508 Auxiliary Equipment Package 8042 Axle Oil Cooling and Filtration 0952 Rear Camera (Secondary Display) 1100 Less Detection System 1301 Left Side Steps 183E JDLink™ 2205 SmartWeigh Ready + Trial 4095 John Deere 6.8L - FT4/SV 6522 Rear Counterweight & Rear Hitch w/ Pin 7026 Joystick Controls 7055 Four Function Hydraulics 5110 Firestone SGG - 20.5-25 L2 16PR Bias Tires w/ 3 PC Rims 5554 Full Coverage Front & Rear Fenders w/ Mudflaps 7403 Hydraulic Coupler - JRB 416 Pattern 7823 3,25 YD (2.50 CM) Enhanced Performance 7458 Bolt-On Cutting Edge 7500 Less Fork Frame 7700 Less Tines BYT12749 5th/6th Function Hydraulics Warranty -John Deere Power Train & Hyd.-60 Months, 1500 Hours,Deductible: 0, Exp Date: 9/20/2028	\$335,244.00	\$212,809.19
1	TBD TBD	0	Attachment - New 2023 LITTLE FALLS MACHINE PR-1243-E2-MS  PR-1243-E2-MS 12' reversible plow Inside Parts LJR8 Hooks Inside Parts LADAPT Inside Parts Rubber Flap Inside Parts Stucchi 4 port - #L4PFQ		\$16,645.00
1	TBD TBD	0	Attachment - New 2023 LITTLE FALLS MACHINE LLDL-10A  LLDL-10A FALLS MODEL LDL-10A REAR MOUNTED SNOW WING Inside Parts Stucchi 2 port - #L2pFQ		\$23,095.00
<b>Equipment Subtotal:</b>				<b>\$259,655.19</b>	



**Purchase Order Totals**

Balance:	\$259,655.19
Sub Total:	\$259,655.19
Cash with Order:	\$0.00
<b>Balance Due:</b>	<b>\$259,655.19</b>

\*Applicable taxes not shown for this document

152 Hp.



**544 P**

Wheel Loader



JOHN DEERE







**Purchase Order Totals**

Balance:	\$270,202.00
Sub Total:	\$270,202.00
Cash with Order:	\$0.00
Balance Due:	\$270,202.00

\*Applicable taxes not shown for this document

*166 Hp*