

LONG LAKE GARDEN CLUB 2024
BUDGET PROPOSAL AND
RECOMMENDATION



LLGC 2024 Garden Projects

- Town Entrance Monument/Welcome Sign
- Brown and Wayzata Intersection Monument
- Fire Department
- Vacant BP Lot

LLGC Expense Categories

- Plants
- Fertilizer
- Mulch
- Garden Beds
- Border Elements
- Appropriate soil
- Miscellaneous

City Assistance

- Plant Maintenance/Watering
- Hardscapes: Picnic Tables/Structures/Benches
- Assembly of Raised Beds and purchase & soil delivered
- Heavy Labor: Boulders/Tree Planting/Tree Maintenance
- Plant sharing
- Waste Receptacles

- Funding

Monuments

- Review: Both monuments were reconstructed in 2023
- 2024: Install new plants; refresh mulch; weed and maintain

Fire Department

- 2024: Maintenance Only

Monument Budget

Entrance Monument	
20 Annuals x \$5 each	\$100
Mulch: 15 bags at \$6 each	\$90
Lake Street Monument	
20 Annuals at \$5 each	\$100
Mulch: 15 bags at \$6 each	\$90
Total:	\$380

Total Budget: \$2,000

Monument Expenses: \$380

Remaining Budget: \$1,620

BP Site

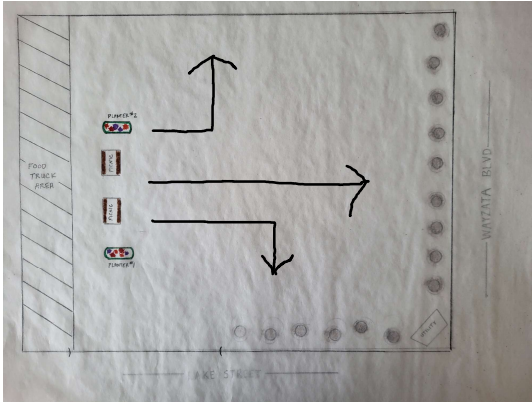
- Parameters
 - Large Site
 - No digging allowed
 - No removal of boulders around edges
 - No permanent fixtures
 - Possibility of food truck on Mondays and Tuesdays

- Make the site more visually appealing/useful until it can be sold

Garden Design Parameters

- Break down large spaces into smaller usable areas
- Define the borders
- Apply the Rule of 3: small, medium and tall
- Establish a focal point
- Add visual appeal with colors and textures

BP Site Plan A: \$610 (+\$380 monuments)



X 2




X 2



+ raised bed soil

Raised Bed Concept

BEST SELLER



★★★★★ 4.9 | 3606 Reviews | [See reviews summary](#)

17" Tall 9 In 1 Modular Metal Raised Garden Bed Kit

\$169.95 ~~\$189.95~~ SAVE \$20

4 interest-free installments, or from \$15.34/mo with [shop Pay](#) [Check your purchasing power](#)

- * Buy a Garden Bed, get two free seedlings. Price updates in cart.
- * Spring Sale: Up to 30% OFF for [Select Items](#).
- * Explore various configurations with our compact, modular kit.
- * Enhance your garden with our versatile [Add-ons](#) and [Accessories](#).

Color: British Green

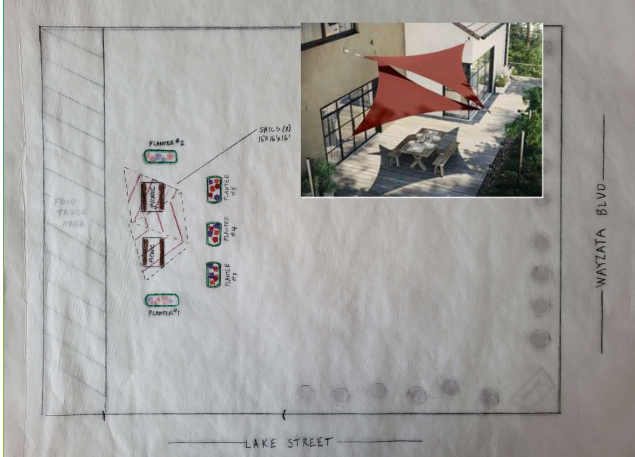
Shipping Status: In Stock

- 1 +

Add to Cart

[Design IN 3D](#)

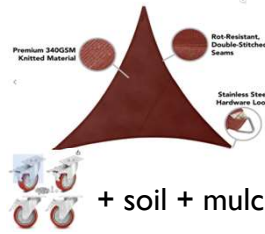
BP Site Plan B: \$1,930 (+\$380)



X 5



X 5



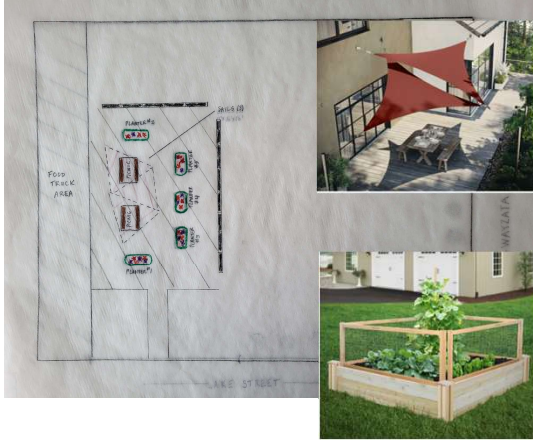
X 3

+ soil + mulch to define space

Poles and Pots for holding the Sun Shade Sails



BP Site Plan C: \$2,530 (+\$380)



X 5



X 5



X 3

Along 2 sides + soil + mulch

Plan D: \$1,980 (+\$380)

- Place Garden Troughs Along Wayzata Blvd



+



5 of each + soil

Long Lake Garden Club Proposed 2024 Budget

	Contingency			
	Plan A	Plan B	Plan C	Plan D
Entrance Monument				No Food Truck
20 Annuals x \$5 each	\$100	\$100	\$100	\$100
Mulch: 15 bags at \$6 each	\$90	\$90	\$90	\$90
Lake Street Monument				
20 Annuals at \$5 each	\$100	\$100	\$100	\$100
Mulch: 15 bags at \$6 each	\$90	\$90	\$90	\$90
Vacant Lot: Wayzata/Lake				
Two Raised Bed Garden Troughs				
2H x 8'W x 17" Deep				
\$185 each x 2	\$370			
\$185 each x 5		\$925	\$925	\$925
Raised bed soil (city to provide base soil)	\$40	\$100	\$100	\$100
Wheels for planters	\$50	\$150	\$150	\$150
Plants to fill troughs: \$75 each	\$150	\$375	\$375	\$375
Sails: 16' x 16' x 16'		\$140	\$140	
3 foot high fence to define space			\$600	
\$10/foot x 60				
Mulch to cover ground		\$240	\$240	
40 bags at \$6 each				
Total:	\$990	\$2,310	\$2,910	\$1,930

V.1: 4/1/24

Questions?

LLGC Members: Anita Secord (Coordinator), Laureen Carlson, Laura Summers

Special Thanks to LLGC Council Liaison Deirdre Kvale