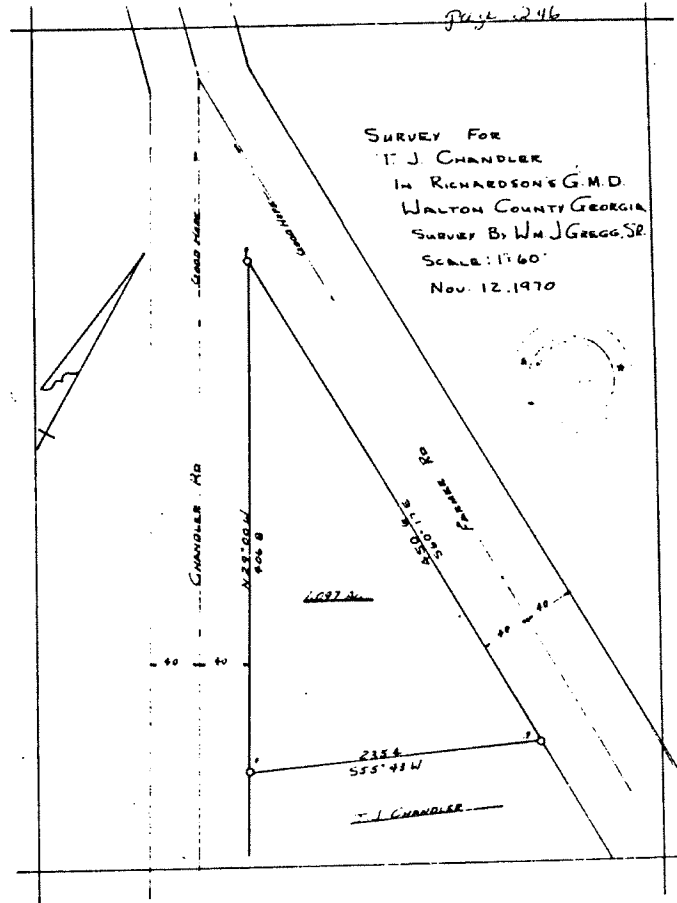


SURVEY FOR
 WAYNE PEERS
 IN LAND LOT 153, 4TH LAND DIST.
 WALTON COUNTY GEORGIA
 SURVEY BY GREGG & ASSOC.
 SCALE: 1:100
 JAN 22, 1971

W. J. Gregg & Assoc.
 GEORGIA REGISTERED LAND SURVEYORS
 100 N. W. CORNER OF
 WALTON COUNTY COURTHOUSE
 WASHINGTON, GEORGIA 30684

RECORDED ON THE 4TH DAY OF Feb. 1976



SURVEY FOR
 T. J. CHANDLER
 IN RICHARDSON'S G.M.D.
 WALTON COUNTY GEORGIA
 SURVEY BY W. J. GREGG, SR.
 SCALE: 1:160
 NOV. 12, 1970

RECORDED ON THE 4TH DAY OF Feb. 1976
 Thomas J. Batcher