

**City of Loganville
Official Zoning Map**

May 9th, 2024

- R-4 - Single Family Rural Residential
- R-22 - Single Family Suburban Residential
- CSO - Open Space Subdivision Overlay
- R-16 - Single Family Urban Residential
- RM-4 - Multifamily Residential Apartments
- RM-6 - Multifamily Medium Density Apartments
- RM-8 - Multifamily Residential Moderate Density Apartments
- MHP - Manufactured Home Park
- O&I - Office & Institutional
- CH - Commercial Highway
- CN - Commercial Neighborhood
- CBD - Commercial Central Business District
- LI - Light Industrial
- HI - Heavy Industrial
- PUV - Planned Urban Village

Legal Notifications:
This map is the property of the City of Loganville, Georgia. The use of this map is granted solely upon the condition that the map will not be sold, copied, or printed for resale without the express written permission of the City. This map is a proprietary product of the City of Loganville, Georgia. In no event will the City and/or its GIS Mapping Consultants be liable for damages, including any loss of profits, lost savings, or other incidental or consequential damages arising from the use, or inability to use this map.

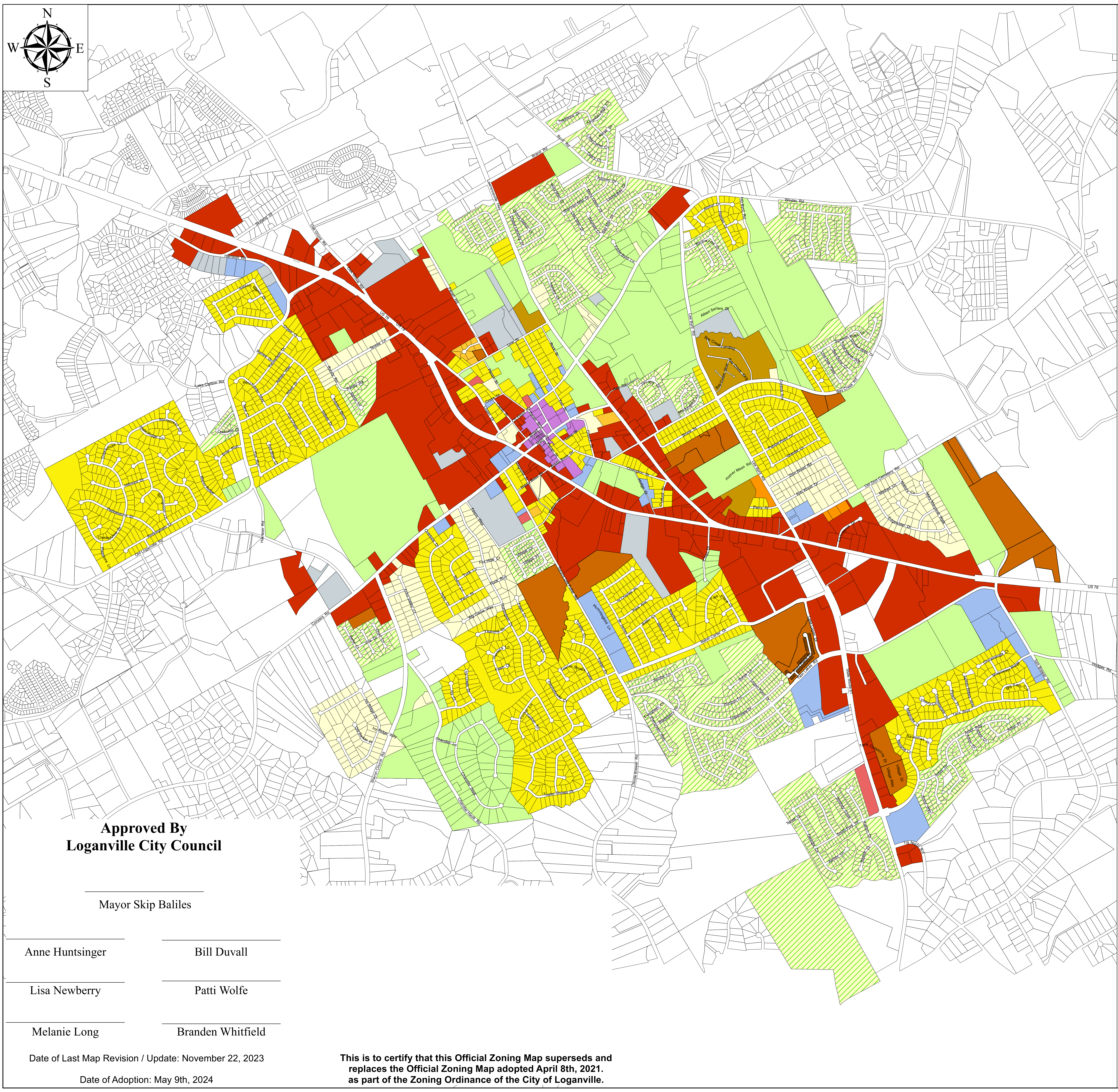
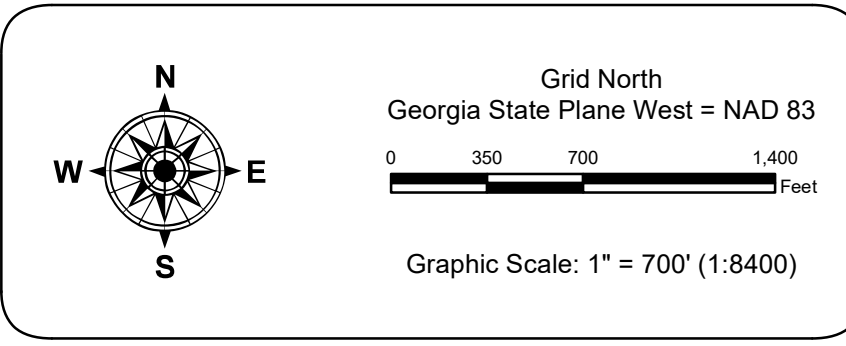
Production Notes:
The compilation methods employed during the production of this map include, but are not limited to, the following mapping processes: plot and/or do/direct research, coordinate geometry, traditional and GIS field surveys and orthorectification.

Data Sources:
• Aerial Photography: ESRI Digital Globe, USDA, LRSIS, and KCM
• City Limits: Gwinnett County GIS and Walton Co Tax Assessors
• Digital Elevation Model: USDA Natural Resources Conservation Service National Elevation Dataset (NED) v1.0
• Parcels: Gwinnett County GIS and Walton Co Tax Assessors

Revisions:
This map may be revised periodically by the City. Should the user find conditions other than those shown, the City would appreciate user input. Email the City at gis@loganvillega.gov for consideration.

Copyright:
No part of this publication may be reproduced, stored in a retrieval system, or transmitted in any form or by any means, electronic, mechanical, photocopying, recording, or otherwise, without the prior written permission of the City. The unauthorized reproduction or distribution of this copyrighted work is illegal. Criminal copyright infringement, including infringement without monetary gain is investigated by the FBI and is punishable by up to five (5) years in federal prison and a fine of \$250,000.

Disclaimer:
This information has been provided from general sources and the City of Loganville Planning Department. TerraMark Geospatial assumes no liability for its accuracy or for any decisions which are made based on this information. This Zoning Map has been compiled for the City of Loganville by TerraMark Geospatial. The City of Loganville does not assume responsibility for the accuracy of information herein.



**Approved By
Loganville City Council**

Mayor Skip Baliles

- | | |
|--------------------------|----------------------------|
| _____
Anne Huntsinger | _____
Bill Duvall |
| _____
Lisa Newberry | _____
Patti Wolfe |
| _____
Melanie Long | _____
Branden Whitfield |

Date of Last Map Revision / Update: November 22, 2023
Date of Adoption: May 9th, 2024

This is to certify that this Official Zoning Map supersedes and replaces the Official Zoning Map adopted April 8th, 2021, as part of the Zoning Ordinance of the City of Loganville.