

RESOLUTION

A RESOLUTION FOR THE CITY OF LOGANVILLE, GEORGIA PROVIDING FOR THE ADOPTION OF THE GEORGIA STATE MINIMUM STANDARD CODES FOR CONSTRUCTION CONCERNING APPENDIX F OF THE RESIDENTIAL BUILDING CODE TO ADD RADON GAS CONTROL METHODS; TO PROVIDE FOR THE NOTICE OF REVISION; TO PROVIDE FOR THE ADMINISTRATION AND ENFORCEMENT OF SAID STANDARD CODES; TO PROVIDE FOR THE SAFETY AND WELFARE OF THE PUBLIC; AND FOR OTHER PURPOSES.

WHEREAS, the City of Loganville has determined that the ability to avoid the installation of these systems through not being in zone 1 is not consistent with the firmly held principle of maintaining the health, safety, and welfare of the citizens of Loganville; and,

Whereas, the Department of Community Affairs and the University of Georgia Extension Department through testing data has classified Walton County in a high risk category for radon gas; and

Whereas, there is evidence that exposure to radon gas in Loganville has the potential to negatively impact the lives of the citizens of Loganville; and

Whereas, the primary intent of adopting the requirements of appendix chapter F of the International Residential Code is to take affirmative proactive steps to mitigate the effects of a known carcinogen; and

Whereas, the City of Loganville has previously adopted administrative and enforcement procedures and penalties to locally enforce building codes.

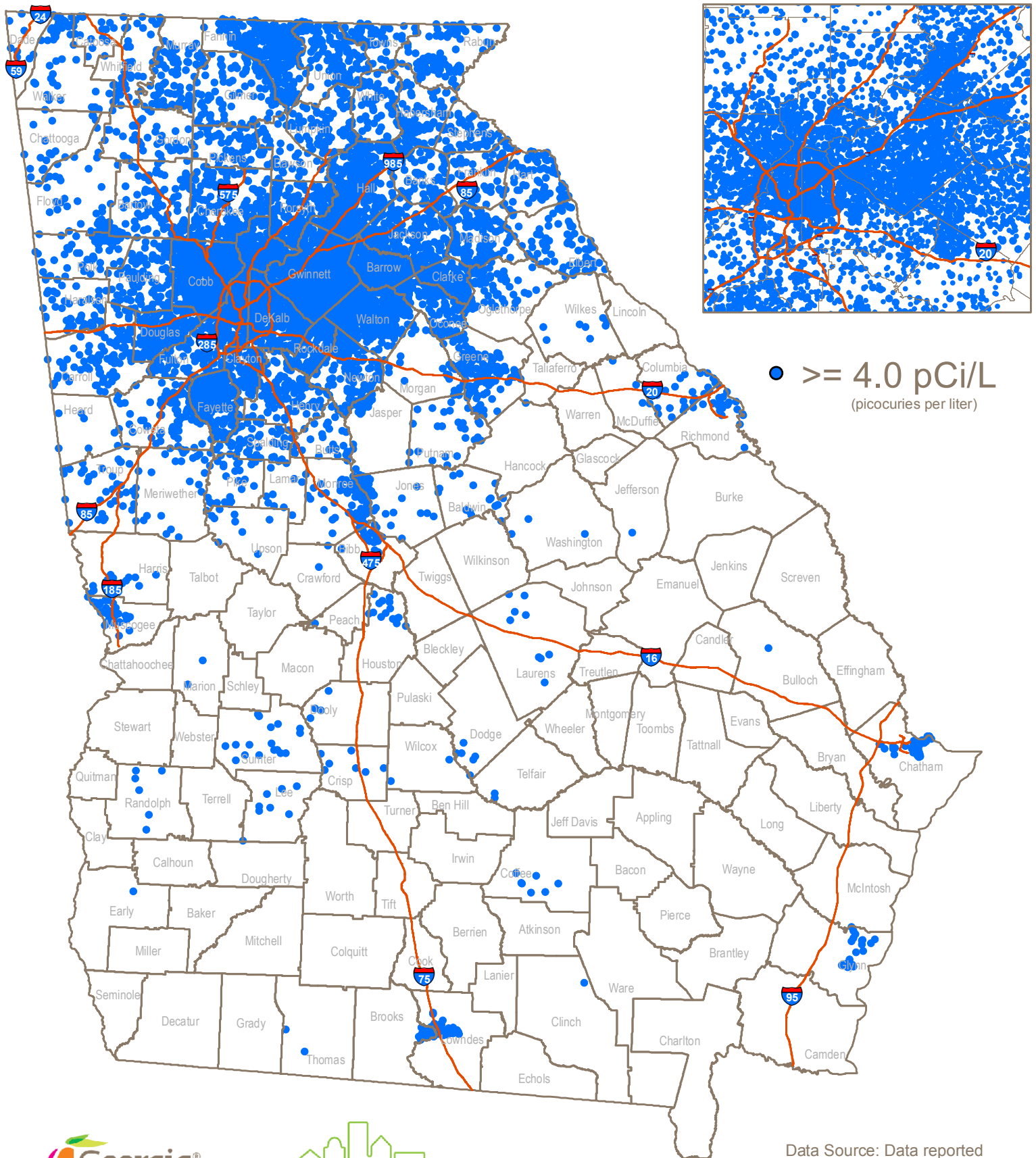
Now, therefore, by this resolution, the City of Loganville shall adopt the above listed revisions in compliance to and in the continual enforcement of the Rules and Regulations of the Georgia State Minimum Constructions Standards Appendix Chapter F, to be effective immediately.

In witness thereof, the Mayor and City Council of the City of Loganville hereto have caused this document to be in effect this 14th day of July 2022.

Danny Roberts, City Manager

Skip Baliles, Mayor

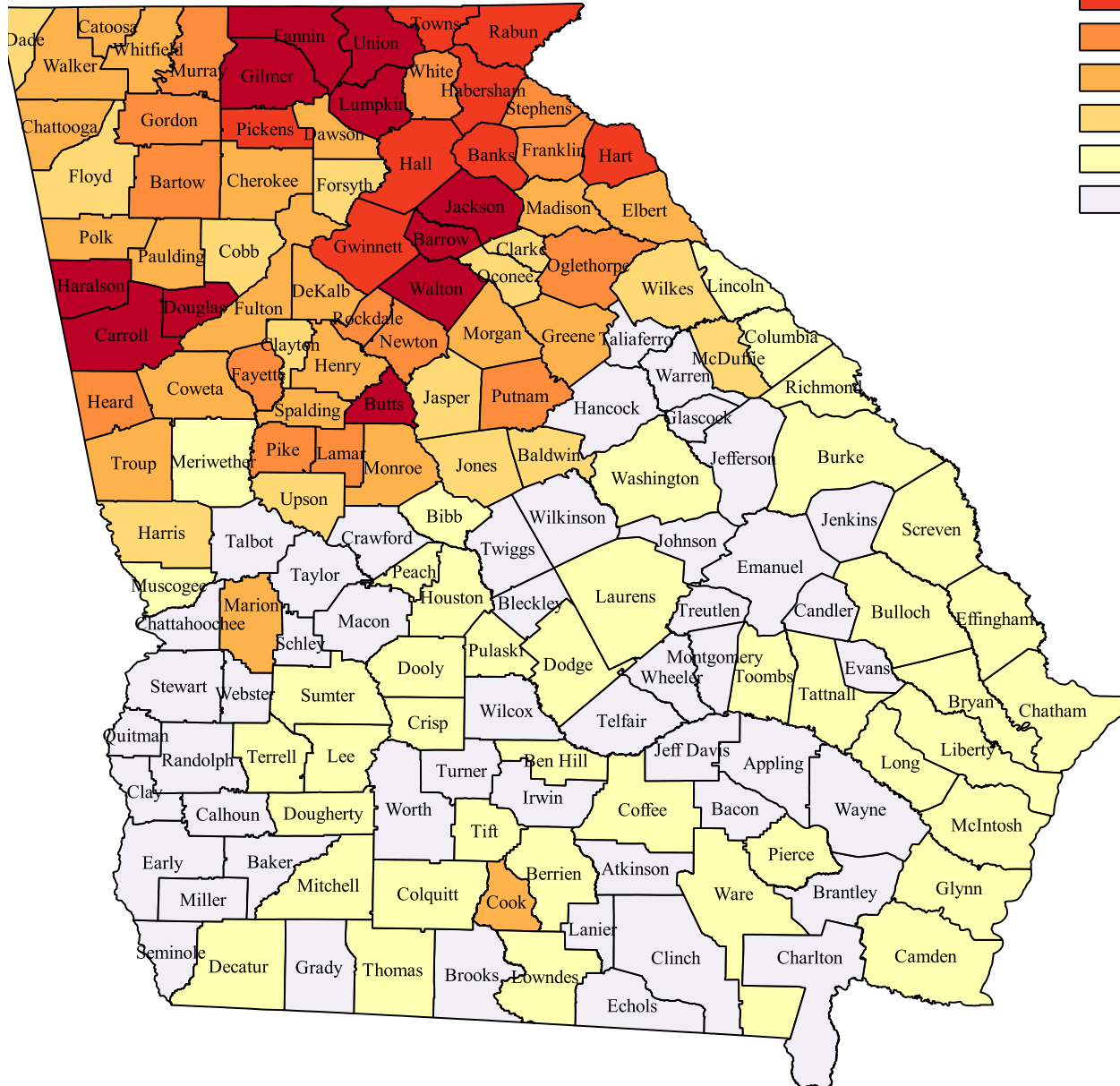
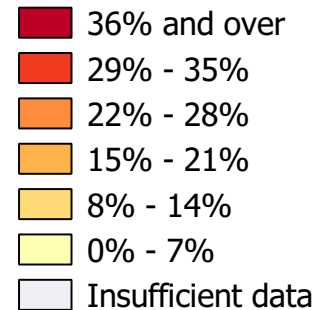
Radon readings



- ≥ 4.0 pCi/L
(picocuries per liter)

Radon Levels in Georgia Counties*

Percentage of homes tested with levels 4.0 pCi/L and above



4.0 pCi/L is EPA's Radon Action level.
EPA recommends that you fix your home
if your radon level is 4.0 pCi/L or above.

*testing data are from individuals who self-selected to test their homes for radon.



UNIVERSITY OF GEORGIA
EXTENSION

Data reflects tests from 4 radon labs from January 1990 to December 2020. Counties with fewer than 15 radon tests are marked "insufficient data".