

# Roundabout Canopy Coverage Update



JUNE 3 TREE  
BOARD MEETING



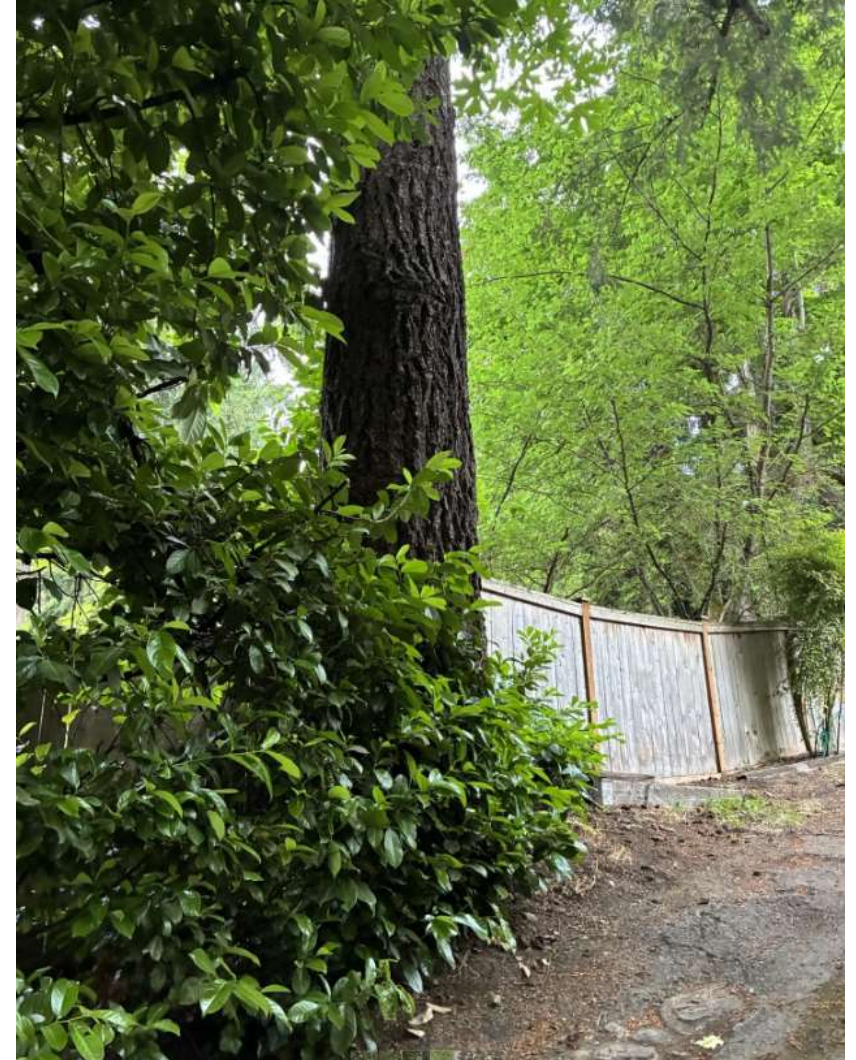
# SR-104 Roundabout at 40<sup>th</sup> Place NE & NE 184<sup>th</sup> Street





# Background & Canopy Update

- ▶ During the project's design phase, the Roundabout team worked with the City's former Urban Forest Planner and our consultant Arborist to permit the required tree removal and to create a canopy replacement plan to mitigate the associated canopy loss
- ▶ This canopy replacement plan includes planting in Horizon View Park
- ▶ More recently, in preparing for construction and coordinating with our contractor, we identified one additional tree that must be removed, an exceptional 44" diameter Douglas Fir (pictured here)
- ▶ This Douglas Fir is located on private property, outside of the City's right-of-way

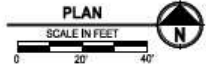




# Background & Canopy Update

- ▶ This Douglas Fir is located at the NE quadrant of the Roundabout site, as shown by the star on the map to the right
- ▶ The removal of this tree has been approved by our Urban Forest Planner
- ▶ The removal of this tree will necessitate an additional 962 sqft of canopy coverage to be added to the project's canopy replacement plan
- ▶ In response to feedback received from the Tree Board, and in alignment with our City code, we plan to replace this canopy loss with new canopy coverage on the Roundabout project site, within the City's right-of-way

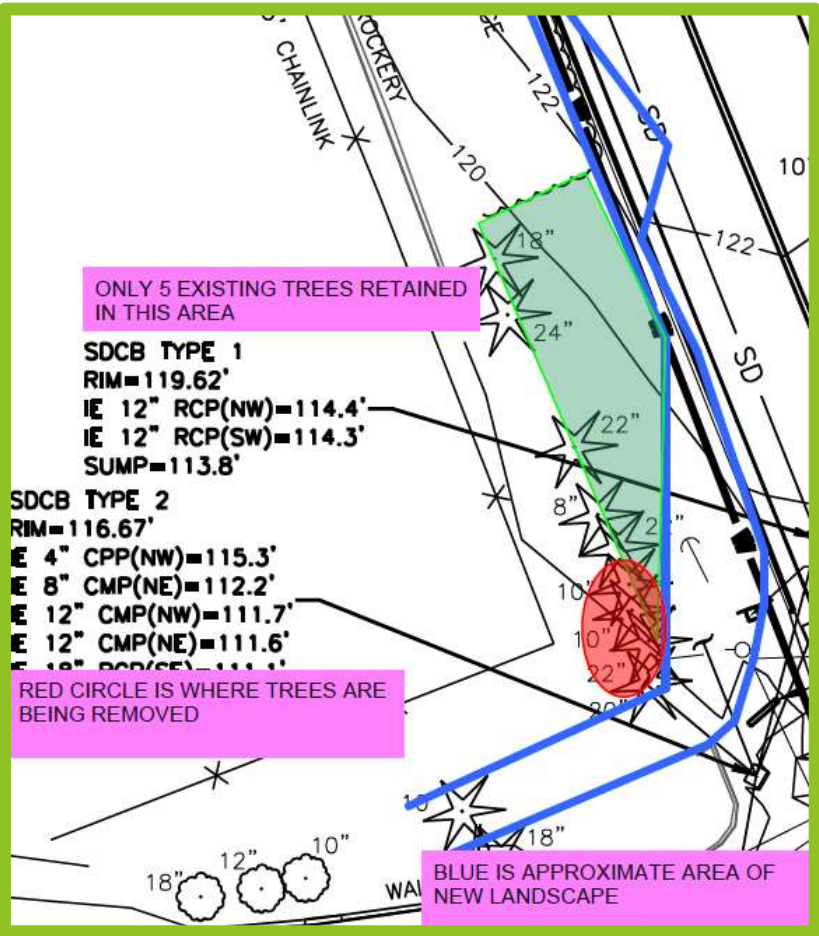
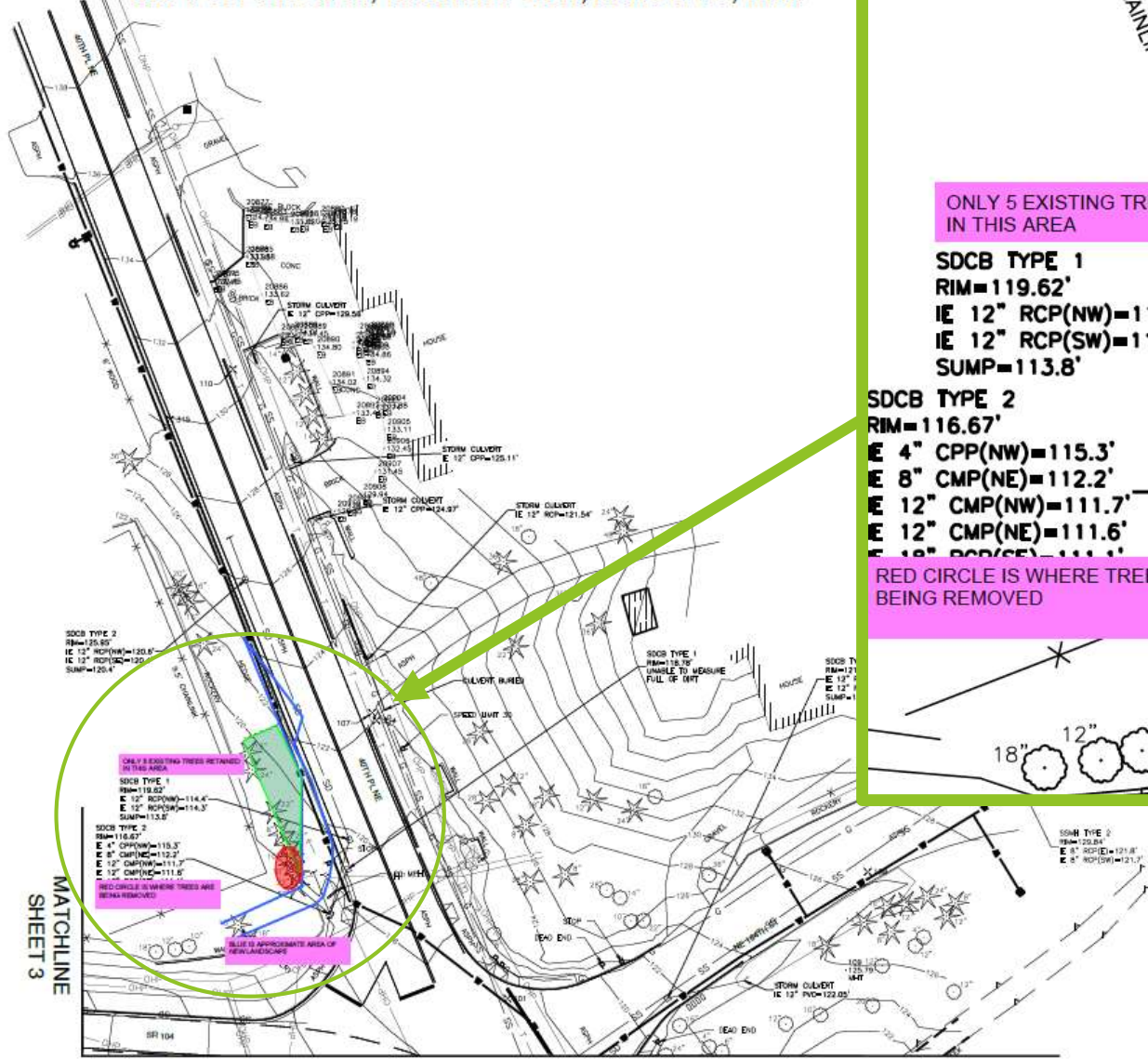




NW 1/4 SECTION 10, TOWNSHIP 26 N, RANGE 4 E, W.M.



Star marks planting area at NW quadrant of Roundabout



ONLY 5 EXISTING TREES RETAINED IN THIS AREA

SDCB TYPE 1  
RIM=119.62'  
IE 12" RCP(NW)=114.4'  
IE 12" RCP(SW)=114.3'  
SUMP=113.8'

SDCB TYPE 2  
RIM=116.67'  
IE 4" CPP(NW)=115.3'  
IE 8" CMP(NE)=112.2'  
IE 12" CMP(NW)=111.7'  
IE 12" CMP(NE)=111.6'

RED CIRCLE IS WHERE TREES ARE BEING REMOVED

BLUE IS APPROXIMATE AREA OF NEW LANDSCAPE

ONLY 5 EXISTING TREES RETAINED IN THIS AREA  
SDCB TYPE 1  
RIM=119.62'  
IE 12" RCP(NW)=114.4'  
IE 12" RCP(SW)=114.3'  
SUMP=113.8'

SDCB TYPE 2  
RIM=116.67'  
IE 4" CPP(NW)=115.3'  
IE 8" CMP(NE)=112.2'  
IE 12" CMP(NW)=111.7'  
IE 12" CMP(NE)=111.6'

RED CIRCLE IS WHERE TREES ARE BEING REMOVED

BLUE IS APPROXIMATE AREA OF NEW LANDSCAPE

L:\SITE\20-138-PR\_104 Roundabout\60300CAD\BASE\2013\SV\485.dwg

NO.	BY	DATE	REVISION

BY:	DATE:
Drawn MM	4/25
Designed MG	4/25
Reviewed VLS	4/25
Approved VLS	4/25

**BID SET**

Know what's below. Call before you dig.



**ATLAS**

17619 NE 67TH CT #100  
Redmond, Washington 98052  
Ph: (425) 429-7800



**CITY OF LAKE FOREST PARK  
SR 104 AND 40TH PLACE NE  
ROUNDBOUT PROJECT  
EXISTING CONDITIONS AND  
TOPOGRAPHIC SURVEY**

PROJECT NO.	221007
CONTRACT NO.	-
DRAWING NO.	EC02
SHEET	4
OF	89

HLINE - SHEET 4

# Proposed On-Site Canopy Replacement Area

Available planting area  
for 2-3 new trees is  
approximately 400 sqft

Canopy removed per design -15,660 sqft  
Canopy replacement per design +15,521 sqft

Additional canopy removed per contractor -962 sqft  
Additional canopy replacement required +1,101 sqft





# Tree Selection

These trees have been selected by our Urban Forest Planner from Lake Forest Park's General Tree List

2 or 3 of these trees will add ~1,100 sqft of canopy coverage to our canopy coverage plan

Important Considerations:

- ▶ Short-term maintenance
- ▶ Long-term maintenance
- ▶ Root intrusion; underground utilities
- ▶ Nearby stormwater system
- ▶ Debris, sap, and shedding

## Katsura Tree

- 962 sqft canopy coverage

## Shore Pine

- 314 sqft canopy coverage

## Paperbark Maple

- 314 sqft canopy coverage

## Incense Cedar

- 707 sqft canopy coverage

## Autumn Gold Ginkgo

- 491 sqft canopy coverage

## Japanese Hornbeam

- 491 sqft canopy coverage



Thank you!