

# Lake Forest Park, WA

Safety Camera Program Analysis

**2023**



SUBMITTED BY VERRA MOBILITY



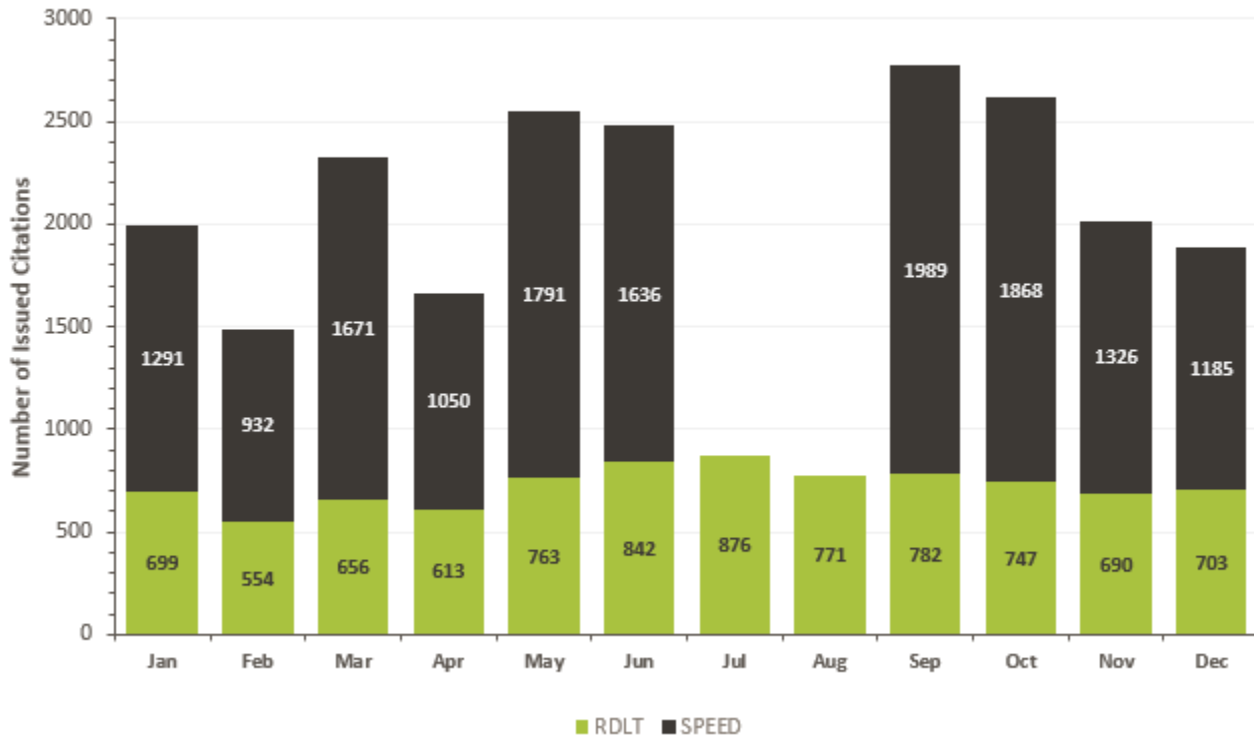
**Trend:**

Lake Forest Park, WA - Red Light 2023 Issued Citations by Program Month													
Month:	Jan	Feb	Mar	Apr	May	Jun	Jul	Aug	Sep	Oct	Nov	Dec	Total
Total Issued Citations (Red Light)	700	555	657	614	764	843	877	772	783	748	691	704	8,708
Active Days Capturing Events	31	28	31	30	31	30	31	31	30	31	30	31	365
Average Citations Per Active Day	22.6	19.8	21.2	20.5	24.6	28.1	28.3	24.9	26.1	24.1	23.0	22.7	23.9
Average Citations Per Site Per Active Day	3.37	2.94	3.08	3.04	3.54	4.46	4.04	3.59	4.08	3.82	3.42	3.37	3.56

Lake Forest Park, WA - Speed 2023 Issued Citations by Program Month													
Month:	Jan	Feb	Mar	Apr	May	Jun	Jul	Aug	Sep	Oct	Nov	Dec	Total
Total Issued Citations (Speed)	1,292	933	1,672	1,051	1,792	1,637			1,990	1,869	1,327	1,186	14,749
Active Days Capturing Events	18	14	22	17	22	13			10	23	18	15	172
Average Citations Per Active Day	71.8	66.6	76.0	61.8	81.5	125.9			199.0	81.3	73.7	79.1	85.8
Average Citations Per Site Per Active Day	10.25	10.14	11.45	8.91	11.71	18.19			99.50	15.32	10.62	11.86	13.51

**Lake Forest Park, WA - Safety Camera Program**

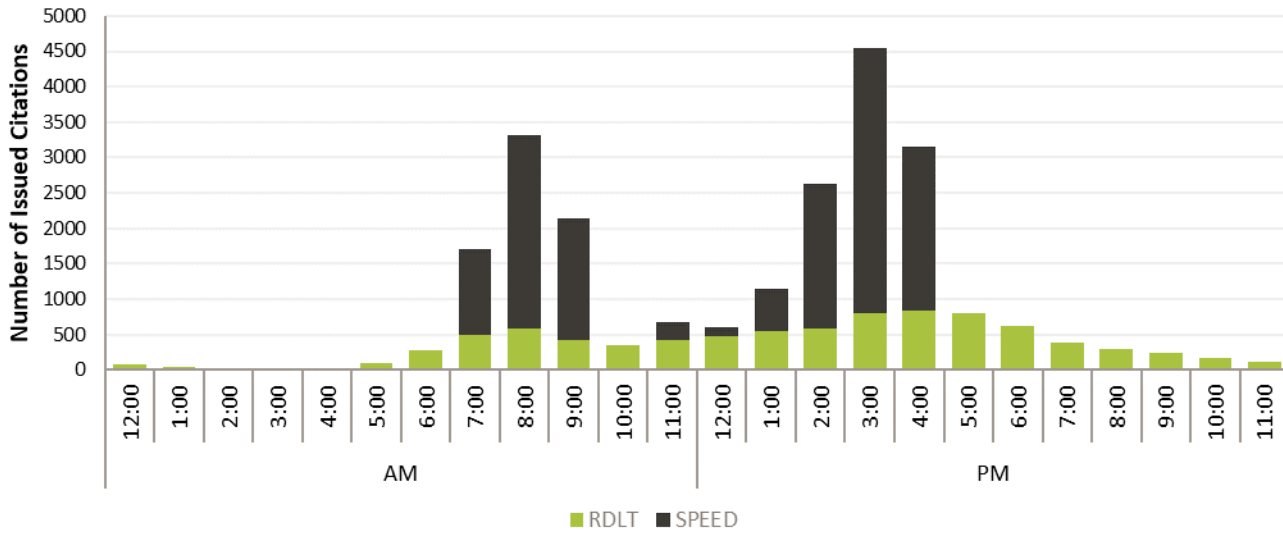
2023 Total Issued Citations by Month



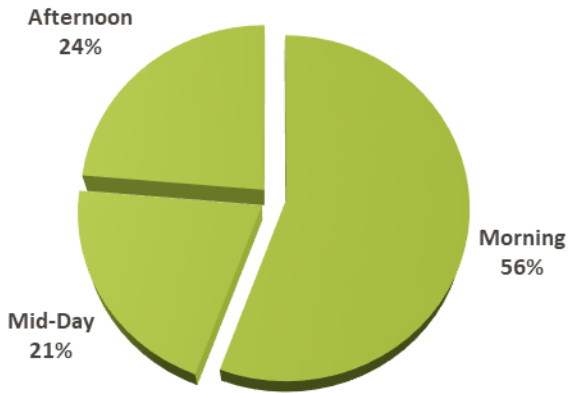
**Time:**

**Lake Forest Park, WA - Safety Camera Program**

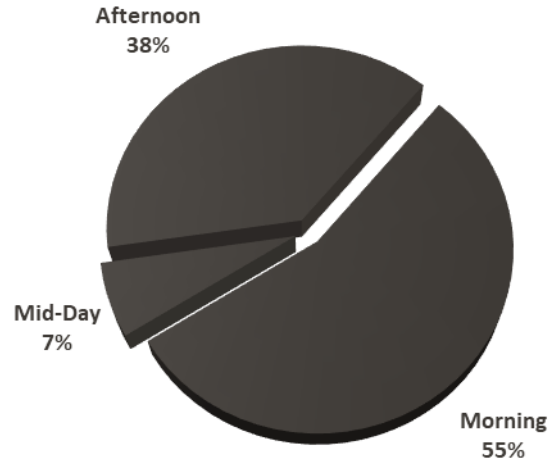
Issued Citations by Hour of the Day



**Lake Forest Park, WA**  
Red Light Citations by Time Period



**Lake Forest Park, WA**  
Speed Citations by Time Period

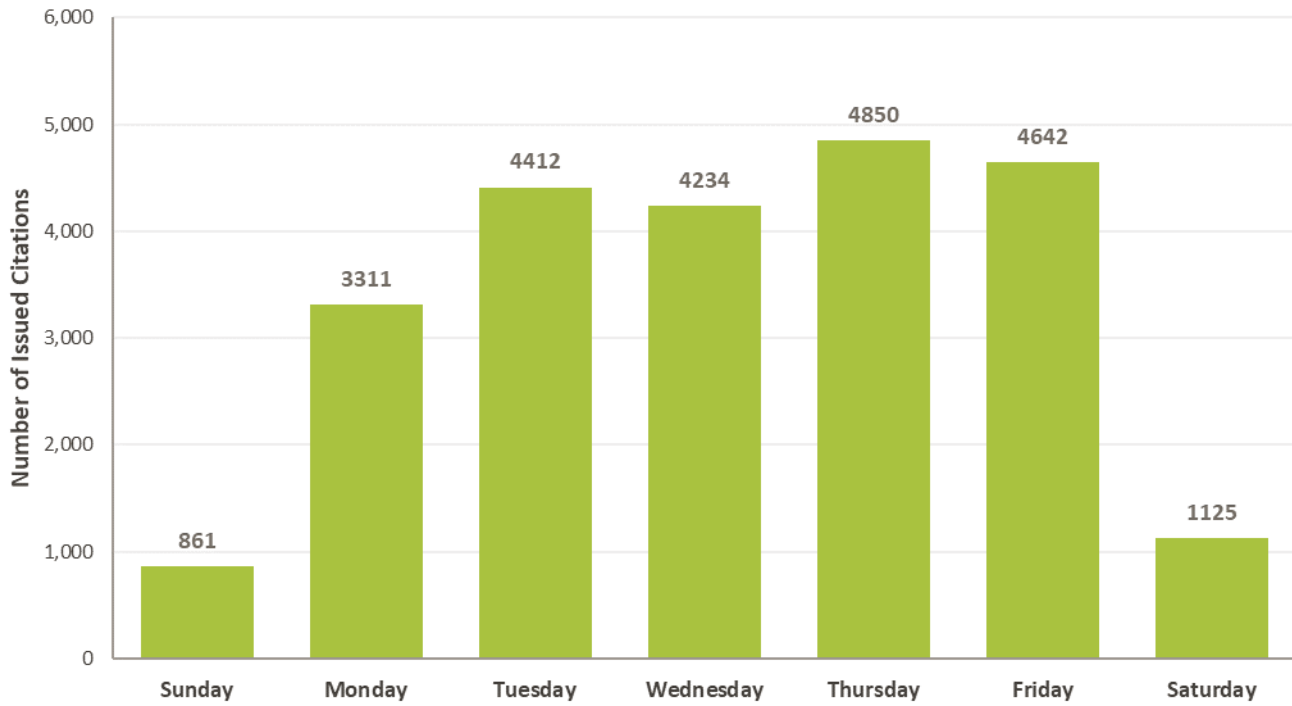


**Weekday:**

Day of the Week	Issued Citations	Number of Active Days	Issued Citations Per Active Day	%
Sunday	861	52	16.6	4%
Monday	3,311	52	63.7	14%
Tuesday	4,412	53	83.2	19%
Wednesday	4,234	52	81.4	18%
Thursday	4,850	52	93.3	21%
Friday	4,642	52	89.3	20%
Saturday	1,125	52	21.6	5%

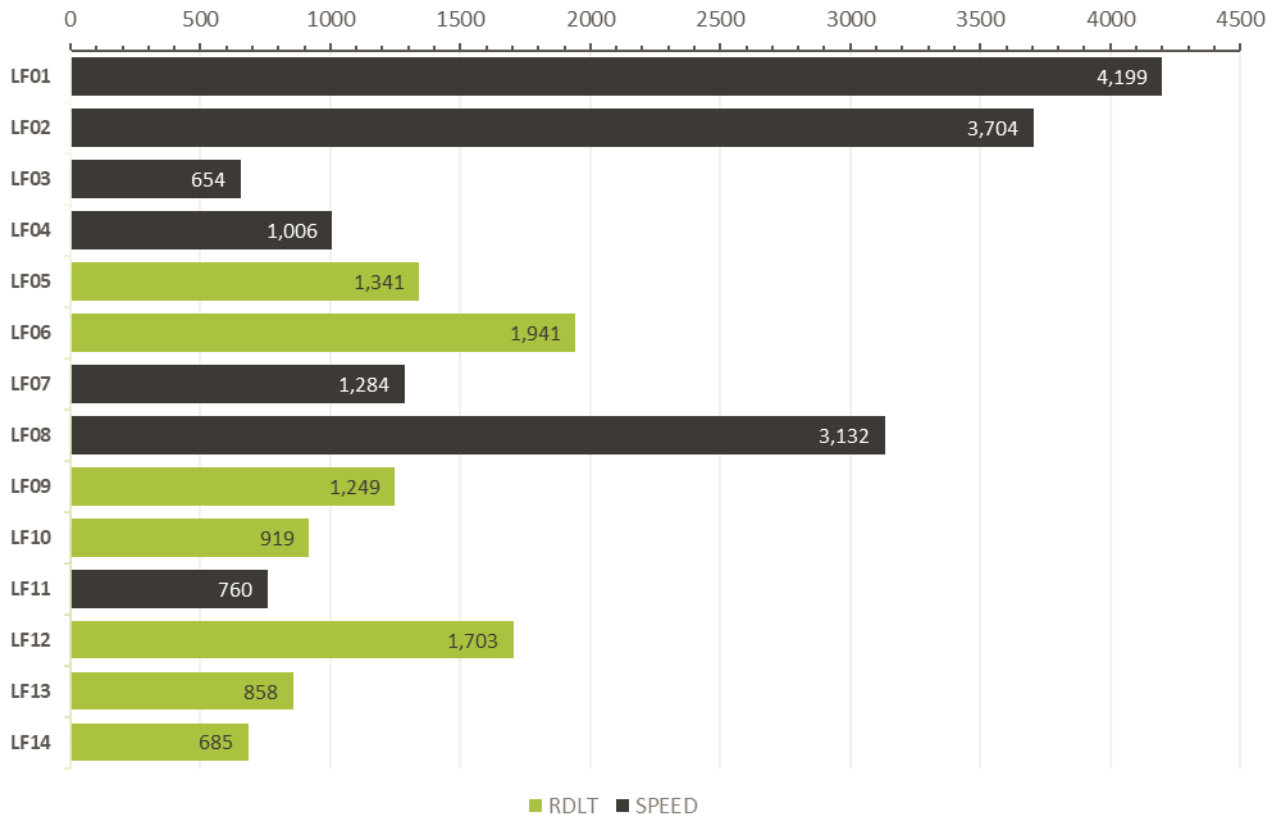
**Lake Forest Park, WA - Safety Camera Program**

Issued Citations by Day of the Week



## By Location:

### Lake Forest Park, WA - Safety Camera Program 2023 Total Issued Citations by Location



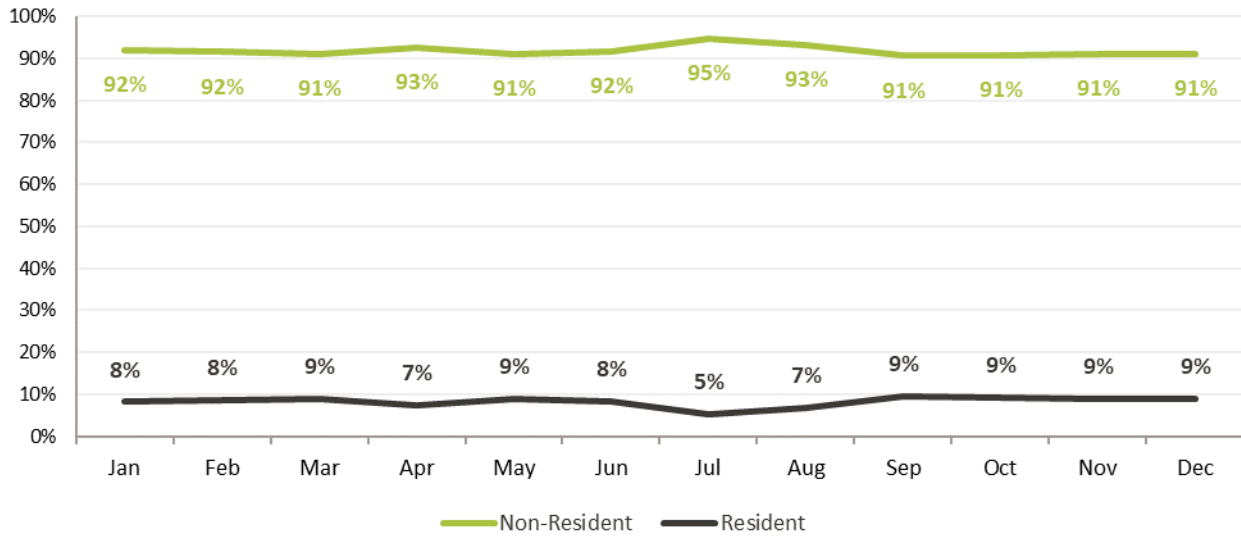
## Legend:

- ▣ LF01  
WB NE 178TH ST @ 37TH AVE NE
- ▣ LF02  
EB NE 178TH ST @ 37TH AVE NE
- ▣ LF03  
NB 35TH AVE NE @ NE 187TH ST
- ▣ LF04  
SB 35TH AVE NE @ NE 187TH ST
- ▣ LF05  
NB BOTHELL WAY NE @ NE 165TH ST
- ▣ LF06  
SB BOTHELL WAY NE @ NE 165TH ST
- ▣ LF07  
NB 40TH PL NE @ 185TH ST
- ▣ LF08  
SB 40TH PL NE @ 185TH ST
- ▣ LF09  
NB BOTHELL WAY NE/ SR 522 @ NE 170TH ST
- ▣ LF10  
SB BOTHELL WAY NE/ SR 522 @ NE 170TH ST
- ▣ LF11  
NB 37TH AVE NE @ BROOKSIDE ELEMENTARY SCHOOL
- ▣ LF12  
NB BOTHELL WAY NE/ SR 522 @ BALLINGER WAY NE/ SR 104
- ▣ LF13  
SB BOTHELL WAY NE/ SR 522 @ BALLINGER WAY NE/ SR 104
- ▣ LF14  
EB BALLINGER WAY NE/ SR 104 @ BOTHELL WAY NE/ SR 522

## Residency:

### Lake Forest Park, WA - Safety Camera Program

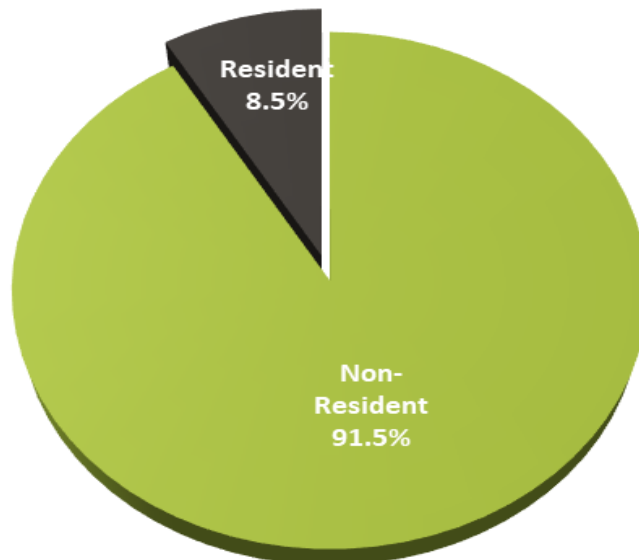
Issued Monthly Citations by Violator City of Residence



Top 5 Cities by Residency of Violators		Top 5 Zip Codes by Residency of Violators	
City Name	Percent of Total Citations	Zip Code	Percent of Total Citations
SEATTLE, WA	17.1%	98155	14.7%
SHORELINE, WA	9.4%	98028	5.3%
LAKE FOREST PARK, WA	8.5%	98125	4.7%
BOTHELL, WA	7.2%	98133	3.8%
KENMORE, WA	5.7%	98034	3.5%

### Lake Forest Park, WA - Safety Camera Program

Citations by Violator City of Residence



## Violator Speed:

Citations by Speed (MPH)																									
26	27	28	29	30	31	32	33	34	35	36	37	38	39	40	41	42	43	44	45	46	47	48	50	51	56
2,953	2,466	2,015	1,663	1,327	1,098	905	696	499	359	243	182	133	63	50	32	23	11	8	7	1	1	1	1	1	1

Citations by Speed Bucket		
Speed Bucket	Total Citations	Percent
26-30 MPH	10,424	71%
31 + MPH	4,315	29%

## Recidivism:

### Lake Forest Park, WA - Safety Camera Program

2023 Recidivism Rate

