

Parks

Lake Forest Park City Council Retreat

03.23.24

Overview and Discussion Parks

Lakefront Park

- Where are we now?
- What are the next steps?

Overall Park System

- Budget review
- Upcoming activities

0 30'



Barke Gilman Trail

Beach Drive NE

Shoreline Setback

Lagoon

Loka Washington

RELOCATED BRIDGE

10' x 200'



Lakefront Park Project

- March 28 – Decision on Preferred Alternative
- May 01 – Apply for RCO Grants
- Summer/Fall 2024 – Salvage, repurpose, and demo cabins
- Secure site
- Spring 2026 – Begin construction – Funding dependent
- Ongoing - Seek additional funds to support the project
- Determine Operations and Maintenance Costs

PUBLIC WORKS DEPARTMENT

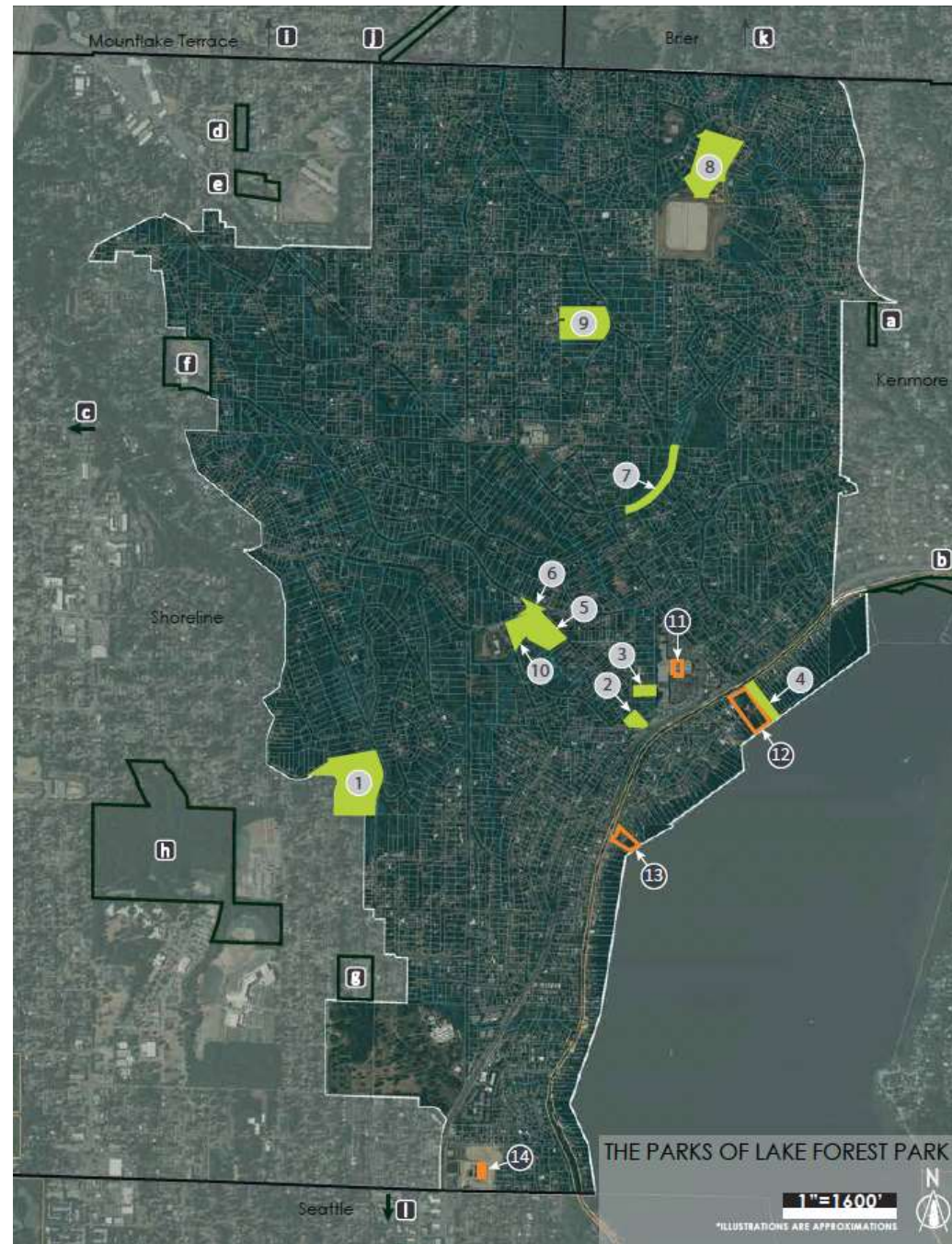
Department Staffing Summary, Public Works	Full Time Equivalent (FTE)	
	2021-2022	2023-2024
Department Employee Count	10.90	12.50

Department Budget Summary, Public Works				
Description	2021-2022 Adopted Budget	2021-2022 Projected	2023-2024 Budget	% Change
<u>Parks</u>				
Salaries	\$ 257,500	\$ 225,978	\$ 274,500	6.6%
Overtime	\$ 8,000	\$ 4,682	\$ 3,000	-82.5%
On-Call Services	\$ 8,000	\$ 6,343	\$ 5,000	-37.5%
Employee Benefits	\$ 106,500	\$ 99,327	\$ 89,000	-16.4%
Safety Clothing / Boots	\$ 1,200	\$ 500	\$ 1,000	-16.7%
Office Supplies	\$ 500	\$ 332	\$ 5,300	960.0%
Operating Supplies	\$ 17,000	\$ 12,650	\$ 8,000	-52.9%
Small Tools & Equipment	\$ 3,400	\$ 3,830	\$ 8,000	135.3%
Professional Services	\$ 32,000	\$ 11,505	\$ 30,000	-6.3%
Communications	\$ 6,600	\$ 6,669	\$ 8,000	21.2%
Travel Exp. (lodging, meals)	\$ -	\$ 1,764	\$ 500	
Equipment Rental	\$ 6,000	\$ 5,843	\$ 4,000	-33.3%
Insurance	\$ 17,200	\$ 16,659	\$ 25,976	51.0%
Utilities	\$ 52,500	\$ 49,924	\$ 55,000	4.8%
Repairs & Maintenance	\$ 56,000	\$ 60,948	\$ 30,000	-46.4%
Repairs & Maintenance - Enhancement	\$ -	\$ 20	\$ -	
Dues / Subscriptions	\$ 385	\$ 309	\$ 1,000	159.7%
Training	\$ 1,000	\$ 1,000	\$ 2,000	100.0%
Total Parks	\$ 573,785	\$ 508,283	\$ 550,276	-4.1%

Personnel related costs are 2/3 budget

- Focus is on maintenance
- Make repairs as needed – split rail fence in Animal Acres
- Minor improvements – Wood chips
- Lots of engagement with residents at Grace Cole.
- Beaver deceiver to prevent damming
- Pickleball court painted at Horizon View
- Showmobile for Events
- Potential invasives removal from parks

City Parks



PARKS AND OPEN SPACES

LFP Parks, Open Spaces, & Trails

- 1 **Grace Cole Nature Park**
30th Ave NE
- 2 **Blue Heron Park**
NE 170th St
- 3 **Whispering Willow Park**
17038 44th Ave NE
- 4 **Lyon Creek Waterfront Preserve**
17337 Beach Drive NE
- 5 **Pfingsl Animal Acres**
NE 178th St
- 6 **Eagle Scout Park**
NE 178th St
- 7 **McKinnon Creek Trail**
NE 184th St
- 8 **Horizon View Park**
19800 47th Ave NE
- 9 **Five Acre Woods** (unofficial name)
40th Place NE at 45 Pl NE
- 10 **Big Tree Park** (unofficial name)
17450 37th Avenue NE

Private PROST Resources in LFP

- 11 **Third Place Commons**
17171 Bothell Way NE
- 12 **Lake Forest Park Civic Club**
17301 Beach Dr NE
- 13 **Sheridan Beach Community Club**
16500 Shore Dr NE
- 14 **Southern Gateway Park**
NE 146TH PL

Parks Maintenance Costs

- 2024 - \$85,000 (est.) invasive species removal in Horizon View
 - As funding permits: \$100,000 (est.) invasive removal in Whispering Willow, Blue Heron, and Animal Acres
 - 2025 forward – budget ~\$10,000 per year to maintain
- Opportunities with additional funding
 - Increased maintenance/installation of paths
 - Increased maintenance of gravel parking areas
 - Improve entrance to 5-Acre Woods
 - Update playground equipment
- Lakefront Park Maintenance: General rule of thumb in the region is a cost of roughly \$6,800 annually per acre for active parks. This amount is within the range reported to the Joint Legislative Audit & Review Committee (JLARC)



2024 LAKE FOREST PARK COMMUNITY EVENTS - DRAFT

JANUARY

SUN	MON	TUE	WED	THU	FRI	SAT
	1	2	3	4	5	6
7	8	9	10	11	12	13
14	15	16	17	18	19	20
21	22	23	24	25	26	27
28	29	30	31			

FEBRUARY

SUN	MON	TUE	WED	THU	FRI	SAT
				1	2	3
4	5	6	7	8	9	10
11	12	13	14	15	16	17
18	19	20	21	22	23	24
25	26	27	28	29		

MARCH

SUN	MON	TUE	WED	THU	FRI	SAT
					1	2
3	4	5	6	7	8	9
10	11	12	13	14	15	16
17	18	19	20	21	22	23
24	25	26	27	28	29	30
31						

APRIL

SUN	MON	TUE	WED	THU	FRI	SAT
						1
2	3	4	5	6	7	8
9	10	11	12	13	14	15
16	17	18	19	20	21	22
23	24	25	26	27	28	29
30						

MAY

SUN	MON	TUE	WED	THU	FRI	SAT
			1	2	3	4
5	6	7	8	9	10	11
12	13	14	15	16	17	18
19	20	21	22	23	24	25
26	27	28	29	30	31	

JUNE

SUN	MON	TUE	WED	THU	FRI	SAT
						1
2	3	4	5	6	7	8
9	10	11	12	13	14	15
16	17	18	19	20	21	22
23	24	25	26	27	28	29
30						

JULY

SUN	MON	TUE	WED	THU	FRI	SAT
	1	2	3	4	5	6
7	8	9	10	11	12	13
14	15	16	17	18	19	20
21	22	23	24	25	26	27
28	29	30	31			

AUGUST

SUN	MON	TUE	WED	THU	FRI	SAT
					1	2
3	4	5	6	7	8	9
10	11	12	13	14	15	16
17	18	19	20	21	22	23
24	25	26	27	28	29	30
31						

SEPTEMBER

SUN	MON	TUE	WED	THU	FRI	SAT
1	2	3	4	5	6	7
8	9	10	11	12	13	14
15	16	17	18	19	20	21
22	23	24	25	26	27	28
29	30					

OCTOBER

SUN	MON	TUE	WED	THU	FRI	SAT
		1	2	3	4	5
6	7	8	9	10	11	12
13	14	15	16	17	18	19
20	21	22	23	24	25	26
27	28	29	30	31		

NOVEMBER

SUN	MON	TUE	WED	THU	FRI	SAT
					1	2
3	4	5	6	7	8	9
10	11	12	13	14	15	16
17	18	19	20	21	22	23
24	25	26	27	28	29	30

DECEMBER

SUN	MON	TUE	WED	THU	FRI	SAT
1	2	3	4	5	6	7
8	9	10	11	12	13	14
15	16	17	18	19	20	21
22	23	24	25	26	27	28
29	30	31				

Date	Event	Time/Place	PW Assistance
30-Mar	Green Fair	10AM-2PM TPC	Supplies from PW Delivered to CH
20-Apr	Styrofoam Recycling Event Hosted by Albertsons	10AM-2PM City Hall Lot	1 PW - Traffic Control
11-May	Pack the Park - Fun Run	6AM - Noon	Yes
11-May	Recycling Event w/ Kenmore	9AM-3PM Kenmore	No
12-May	Farmers Market Opening Day (All Sundays through Oct. 20)	10AM-3PM City Hall	None unless directed
15-Jun	LFP Garden Tour & Market	9AM-3PM TPC	City Booth? CAC Setup
26-Jun	Concert in the Park Potential Beer Garden	XX AA Park	Showmobile/Tidy Park/Fenc Cory w/ Booth
31-Jul	Concert in the Park	XX	*Showmobile/Tidy Park Cory w/ Booth
10-Aug	Play/Event in Park w/ ShoreLake Arts	XX	*Showmobile/Tidy Park Cory w/ Booth
24-Aug	Viva Latinoamerica	XX AA Park	None, Tidy Park City Booth?
XX	Family Day at the Farmers Market Possible PW Trucks/Electric Tools	10AM-3PM	Cory w/ Booth (Meyor & PW?)
7-Sep	Picnic in the Park!	10AM-2PM AA Park	*Showmobile/Tidy Park/Road Closures
	Yoga in the Park Series - Set Mornin 8 week series	9AM-10AM AA Park	
	Paws in the Park	TBD	*YES - Details to Come *Showmobile/Tidy Park
	Recycling Event w/ Kenmore	9AM-3PM Kenmore	No
	*Showmobile will need to be delivered before event date		
	Community Partner/Organization Ran Event		
	City of LFP Ran Event		

