

Goals & Policies

Parks, Trails, & Open Space

Introduction

The Parks, Trails, and Open Space Element Goals and Policies support the City's commitment to developing and maintaining an exceptional park and trail system that provides diverse recreational opportunities that support physical and mental health in addition to preserving environmentally sensitive areas and forested and habitat areas. The Element includes policies that provide guidance on park maintenance, funding strategies, and tie-ins to the *Legacy 100-Year Vision*.

Additional information supporting these goals and policies can be found in Parks, Trails, & Open Space Element Background Analysis (Volume II), which includes:

- Inventory of the City's parks
- Standards for various types of parks
- Integrated Pest Management information
- One Percent for Art Program information





Goals & Policies

Goal PT-1 Development and Maintenance. Maintain a high standard for the development and maintenance of the City's parks for both active and passive uses.

Policy PT-1.1 Seek and encourage the development of a sustainable funding source for acquisition, development, and maintenance of to acquire, develop, and maintain recreational properties and facilities.

Policy PT-1.2 Continue efforts toward identification and acquisition of appropriate property for development of parks and open space that address the community's needs, including acquiring and development parks and open space where gaps exist in the current system.

Policy PT-1.3 Complete improvements in all parks and develop and enforce an environmentally appropriate maintenance plan for existing and future parks, trails, and public areas.

Policy PT-1.4 Implement and monitor the necessary restoration and preservation plans for riparian and sensitive area open spaces in the City's parks.

Policy PT-1.5 Assure-Ensure all park development is sensitive to adjacent uses, with respect to impacts of traffic, noise, litter, light, and hours of operation.

Policy PT-1.6 All improvement, restoration, and placement of structures in parks and the design and development of new parks and plans for maintenance will be reviewed and approved by the Community Services Commission.

Commented [CL1]: This is an implementation action

Commented [CL2]: This is an implementation action

Commented [CL3]: This is an implementation action

Commented [CL4]: This is an implementation action

Policy PT-1.7 Maintain strict adherence to Integrated Pest Management policy on all public property and roadsides.

See the discussion of **Pest Management** in the Parks, Trails, & Open Space Element Background Analysis.

Policy PT-1.8 ~~Recognize the value of having~~Support community gathering places ~~and support their continuing availability~~as valuable assets for community members.

Policy PT-1.9 Promote parks, recreation, open spaces, and trails as essential components to physical, mental, and emotional health and well-being.

Goal PT-2 Trails. Promote ~~the establishment and maintenance of~~a safe, interconnected system of trails throughout the City, ~~recognizing the that~~serve important ~~regional and local~~recreational and transportation roles ~~played by for regional and local bicycle and pedestrian trail systems.~~

Policy PT-2.1 ~~Promote development and maintenance of~~Encourage safe walking and bicycle paths through and throughout the city.

Policy PT-2.2 Consider utilization of undeveloped rights of way as possible locations for foot or bike trails which connect parks, neighborhoods, schools, recreational facilities, and access to public transportation.

Policy PT-2.3 Designate “scenic routes” for bicycle and pedestrian traffic.

Policy PT-2.4 Establish signage and wayfinding standards for scenic routes.

Commented [CL5]: This is an implementation action

Commented [CL6]: This is an implementation action

Commented [CL7]: This is an implementation action

Commented [CL8]: This is an implementation action





Goal PT-3 Safe Access to Parks. Provide safe ~~multimodal and non-~~~~motorized~~~~active~~ ~~transportation~~ routes to parks, trails, ~~and~~ open space, ~~and recreational facilities by enhancing infrastructure that facilitates~~ ~~access through walking, biking, and transit.~~

Policy PT-3.1 Gather data using digital mapping, walkability audits, and surveys as a basis for analyzing where city's infrastructure hinders safe access to parks.

Policy PT-3.2 ~~Develop plans for the placement of parks to increase park visibility and shorten~~Promote accessible routes to parks that ~~to~~ meet the needs of all residents.

Policy PT-3.3 ~~Coordinate park planning with the Capital Improvement Program (CIP) process and place a high priority on~~Prioritize infrastructure ~~in the Capital Improvement Plan~~ that improves access to parks and open space.

Policy PT-3.4 Facilitate intergovernmental coordination and partnerships between public, private, and non-profit sectors ~~in order to~~ enhance ~~safe-~~ ~~regional~~ access to parks.

Goal PT-4 Environmental Protection. Protect environmentally sensitive areas, wildlife habitats, and wooded areas ~~to provide relief from urban development.~~

Policy PT-4.1 ~~In situations where regulatory measures are not effective, seek funding for~~Encourage open space acquisition ~~which preserves to~~ ~~conserve~~ the city's watersheds, environmentally sensitive areas, wildlife corridors, fish and amphibian habitats, and wooded areas.

Commented [CL9]: This seems consistent with CPP DP-2, provided it applies to the UGA as well

Commented [CL10]: This is an implementation action





Policy PT-4.2 Coordinate open space priorities with the ~~Environmental Quality Commission~~ Parks and Recreation Advisory Board and community environmental organizations.

Policy PT-4.3 ~~Use the city's parks, trails, and open spaces to provide information and~~ Promote educational al programs about natural systems.

Policy PT-4.4 Promote the ~~use of incentives such as property tax reductions, conservation easements, trusts, and other techniques to preserve~~ preservation of desirable lands for the public benefit, ~~and in appropriate situations, consider acquiring suitable properties for park, recreation and open space uses.~~

Policy PT-4.5 Remove invasive species in parks, trails, and open spaces.

Policy PT-4.6 ~~Consider implementing~~ Require ~~water reuse and reclamation for irrigation and other non-potable water uses.~~

Goal PT-5 Active Parks. ~~Work diligently to provide the~~ Encourage a variety of recreational facilities and activities ~~desired by the city's~~ to serve the diverse interests of city residents.

Policy PT-5.1 Pursue the acquisition and development of active park facilities.

Policy PT-5.2 Engage the Youth Council in planning for active parks.

Policy PT-5.3 ~~Work cooperatively~~ Increase collaboration with community organizations that sponsor recreational al and cultural activities to supplement recreational opportunities in the city.

Policy PT-5.4 ~~Work cooperatively~~ Coordinate with the Shoreline School District, neighboring cities, and community agencies to ~~help achieve the full realization of~~ expand recreational potential in Lake Forest Park.

Goal PT-6 Signage. ~~Ensure that adequate and appropriate~~ Promote inviting signage is installed and maintained ~~and wayfinding in the city's parks and at entrances to the city.~~

Policy PT-6.1 ~~Design and locate all signs in a manner that assures they are visible, informational, and aesthetically pleasing~~ Encourage universal design techniques for accessible signage.

Policy PT-6.2 Monitor all signs to assure they and the ~~Support~~

Commented [CL11]: This is an implementation action

Commented [CL12]: This is an implementation action consistent with CPP PF-11

maintenance of signs and surrounding plantings to ensure
visibility are well maintained.

Goal PT-7 Arts and Culture. ~~Continue to develop and expand public access to~~Encourage inclusive representation in art and cultural heritage for public places.

Policy PT-7.1 Support visual and performing arts in the community and promote art education and participation.

Policy PT-7.2 Pursue grants which could provide for placement of public art in Lake Forest Park.

Policy PT-7.3 Encourage private and corporate support of the arts.

Policy PT-7.4 Develop and regularly update the Public Arts Plan, maintain a publicly available list of the City's public art, and incorporate policies and procedures related to the maintenance of public art and the One Percent for Art Program.

Commented [CL13]: This is an implementation action

Commented [CL14]: These are implementation actions

Goal PT-8 Building Community Engagement. Encourage community engagementFacilitate inclusive involvement in community activities.

Policy PT-8.1 Create and promote volunteer opportunities in the City's parks and recreational programs.

Policy PT-8.2 Encourage and promote [accessibility for](#) community-wide events.

Policy PT-8.3 ~~Encourage~~Support community ~~input~~collaboration in the planning and program development process of parks projects.

Policy PT-8.4 Maintain park spaces for use as staging areas for disaster response.

Goal PT-9 Legacy 100-Year Vision Implementation. Utilize the detailed set of implementation strategies found in the Legacy Vision toSupport aGreen Infrastructure-based in the capital improvement program.

~~**Policy PT-9.1** Determine areas of need and establish parks in those areas to provide every person in the city with a park within a reasonable distance.~~

Policy PT-9.2.1 Identify and acquire appropriate property for future park facilities, withSupport expansion of existing and new parks and active parks, especially in or adjacent to centers as priorities.

~~**Policy PT-9.3.2** Consider the creation of a dedicated capital fund to take advantage of opportunities for property acquisitions when such a fund could leverage significant grant awards, and other outside funding.~~Explore opportunities to fund property acquisitions for Legacy projects.

Policy PT-9.4.3 Consider initiating a parks bond and/or the creation of a parks district for park acquisition, restoration, improvement, and maintenance.

Commented [CL15]: Consistent with VISION 2050 MPP-DP-11

Commented [CL16]: Leverage significant grant awards is an implementation action

Green infrastructure is the natural life support system of the living landscape—a strategically planned and managed network of wilderness, parks, and greenways; conservation easements; and lands with conservation value that support native species, natural ecological processes, and air and water resources.

Policy PT-9.5.4 ~~Where appropriate, require that~~ Consider using pervious surfaces and low impact development features ~~be used~~ in park development and restoration.

Policy PT-9.6.5 Utilize conservation easements or other means to expand wildlife corridors, to daylight creeks, and to develop creek-side.

Policy PT-9.7.6 ~~Provide for increased~~ Increase public access to Lake Washington.

Policy PT-9.8.7 Develop community gardens.

Policy PT-9.8 Prioritize green infrastructure in historically underinvested neighborhoods.

Policy PT-9.9 Insure that parks, trails, and gathering spaces are accessible by the diverse population of the city where feasible.

Goal PT-10 Equity. Promote equitable access to parks, trails, and open spaces.

Policy PT-9.10.1 ~~Determine areas of need~~ Prioritize historically underserved communities for parks, trails, and open space improvements and investments and establish parks in those areas to provide every person in the city with a park within a reasonable distance.

Policy PT-10.2 ~~Ensure~~ Plan for a system of ~~that~~ parks, trails, and gathering spaces that are accessible within a five-minute walkshed of the city's diverse residents.

Commented [CL17]: This is an implementation action

Commented [CL18]: Consistent with CPP DP-43

Commented [CL19]: Consistent with VISION 2050 MP-En-15 and CPP EN-22

Background Analysis

Parks, Trails, & Open Space

Introduction

Though Lake Forest Park's large lots and extensive tree canopy give the city a park-like quality, there are also a number of ~~several~~ many designated parks, open spaces, and recreational facilities within the community. These spaces allow for both passive and active recreation. ~~In~~ Lake Forest Park has trails for hiking and rolling, playgrounds, recreational facilities, and views one can go on a nature hike, visit a playground, bicycle, or simply sit and enjoy the view of majestic ~~Mt. Mount Rainier~~ across Lake Washington. These parks and open spaces are ~~an~~ assets to the community that provides enjoyment, physical and mental health benefits and promote social capital, and increased property values. The City intends to increase both the quality and quantity of parks and open space ~~available~~ accessible to the community.

This background analysis contains information that was used in developing the update of the goals and policies in the Parks, Trails, & Open Space Element of the Comprehensive Plan including:

- Planning Context
- Inventory of Parks and Recreation Facilities
- Park Standards
- Integrated Pest Management
- The ~~One~~ Percent for Art Program

Planning Context

Lake Forest Park Legacy 100-Year Vision

The primary purpose of the *Legacy 100-Year Vision* is to promote the enhancement of the City's green infrastructure over the next century. A robust system of green infrastructure is made up of several "hubs," such as parks, natural areas, and other open spaces, and connected by "links," such as greenways and trails. The Vision, which was the subject of extensive community involvement, identifies identified several projects that could be undertaken to work towards this ideal for the future. The Vision informs and supports the goals and strategies of the Parks, Trails, & Open Space Element of the Comprehensive Plan contains and the Plan in turn has a number of policies that work to implement the recommendations of the *100-Year Vision*.

Inventory of Parks and Recreation Facilities

Table II.36 lists the parks and recreation facilities in Lake Forest Park. Figure II.30 on page 182 shows the location of these facilities.

Park Standards

Table II.36 uses the following standards to classify parks.

Mini Park

Passive recreation or specialized facilities that serve a concentrated or limited population or a specific group such as children or seniors. These facilities have minimal improvements.

Neighborhood Park

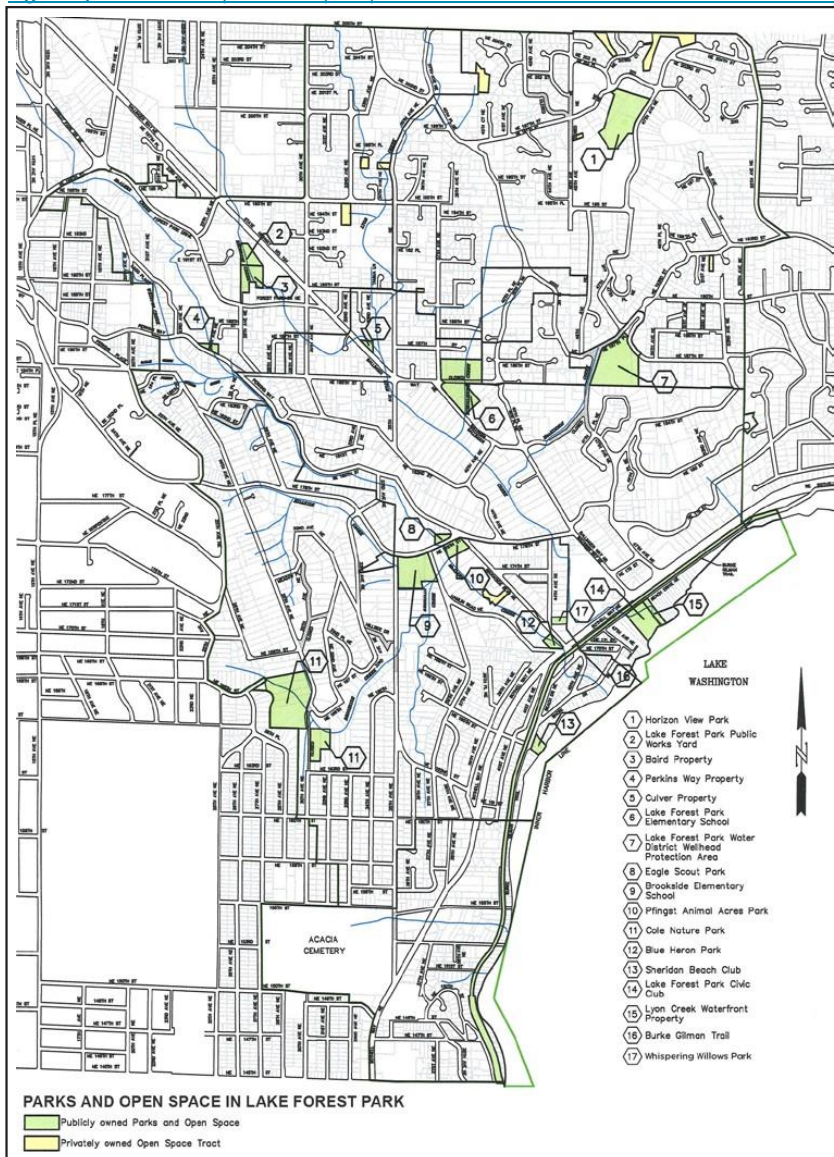
Designed to serve the immediate surrounding residential population or employment base. Often includes areas for active recreation such as ball fields, courts, and passive recreation.

Table II-36 Inventory of parks and recreation facilities in Lake Forest Park

Facility Name	Ownership	Size (Acres)	Facilities	Active/ Passive	Classification
Pfingst Animal Acres Park	City	3.9	Picnic Area, Walking Trail, Children's Garden, Public Art, Viewing Deck, Parking	Passive	Community Park
Eagle Scout Park	City	0.25	Sitting Area	Passive	Community Park
Blue Heron Park	City	0.5	Sitting Area, Natural Area, Stream Side, Bridge with Public Art, Parking	Passive	Mini Park
Whispering Willow Park	City	0.62	Natural Play Area, Boardwalk, Sitting Area, Wetland, Parking	Passive	Community Park
Horizon View Park	City	8.4	Playground, Play Field, Tennis Court, Half Basketball Court, Walking Trail, Parking	Active	Community Park
Lake Forest Park Civic Club	Private	1.5	Boating, Picnic Area, Playground, Restrooms, Swimming Beach, Parking	Active	
Sheridan Beach Club	Private	0.74	Boating, Pool, Playground, Cabana	Active	
Lake Forest Park Elementary School	Shoreline School District	1	Playfield, Basketball, Tennis Courts, Playground, Parking	Active	Neighborhood Park
Brookside Elementary School	Shoreline School District	1	Playfield, Basketball Court, Playground, Parking	Active	Neighborhood Park
Burke-Gilman Trail	King County	26 mi. (2.1 mi. in City)	Bicycling, Walking, Jogging and Skating	Active	Community Park
Third Place Commons	Private	20,000 ft²	Food, Entertainment, Meeting Space, Play Area, Stage	Passive	
Lyon Creek Waterfront Preserve	City	0.89	Waterfront Access, Trail, Picnic Area, Sitting, Dock	Passive	Community Park
Grace Cole Nature Park	City	6	Walking Trails, Environmental Education, Ponds/Wetland	Passive	Community Park
Southern Gateway Park	City	0.45	Walking, Jogging, ADA access, Sitting Areas, Transit Access	Active	Neighborhood Park
Lakefront Park	City	1.91	TBD	TBD	TBD
Culver Property	City	0.45	Undeveloped Open space	NA	
Baird Property	City	2.68	Undeveloped Open space	NA	
Briarcrest Property	City	1.45	Undeveloped Open space	NA	
Perkins Way Property	City	0.86	Undeveloped Open space	NA	

Source: City of Lake Forest Park, 2015.

Figure II-30 Location of parks and open space in Lake Forest Park



Community Park

Designed to serve the surrounding community (several neighborhoods). May contain special amenities attractive to visitors throughout the area.

Active Park

An active park is a public area designed as a park which ~~affords~~ provides facilities and/or equipment for exercise or play. It can also have elements of a nature park or green space ~~but still retains elements for activities~~.

Passive Park

A passive park is a public area designated as a park but does not ~~afford~~ contain any facilities or equipment for exercise or play, i.e., a nature park or green space. It can have benches or trails but is not ~~conducive~~ intended for any active uses, such as sports ~~or play~~.

Integrated Pest Management

Integrated Pest Management (IPM) involves dealing with pests in an environmentally sensitive way. Rather than ~~aim~~ aiming for the total elimination of pests, IPM's goal is to keep pests at an acceptable level that minimizes damage to plants. According to the Pacific Northwest Landscape IPM Manual, ~~use of~~ these techniques can reduce pesticide use by at least half without affecting the quality of plants. Guided by programs set in place by Seattle Tilth, the City of Lake Forest Park strives to use IPM in caring for its parks and other open spaces.

Percent for Art Program

Percent for Art programs exist in public agencies all over the country. These programs stipulate that a percentage of project costs from certain types of projects must be used for public art. For ~~instance over four decades~~, King County has required ~~1%~~ one percent of the cost of certain capital improvement projects ~~to go towards be set aside for art for over four decades~~. Lake Forest Park currently does not have such a program or requirement in its code. Instituting a Percent for Art requirement in Lake Forest Park would increase the amount of art in public parks, ~~enhancing~~ enhance their aesthetic qualities, and ~~drawing more people to visit them~~ attract more visitors.