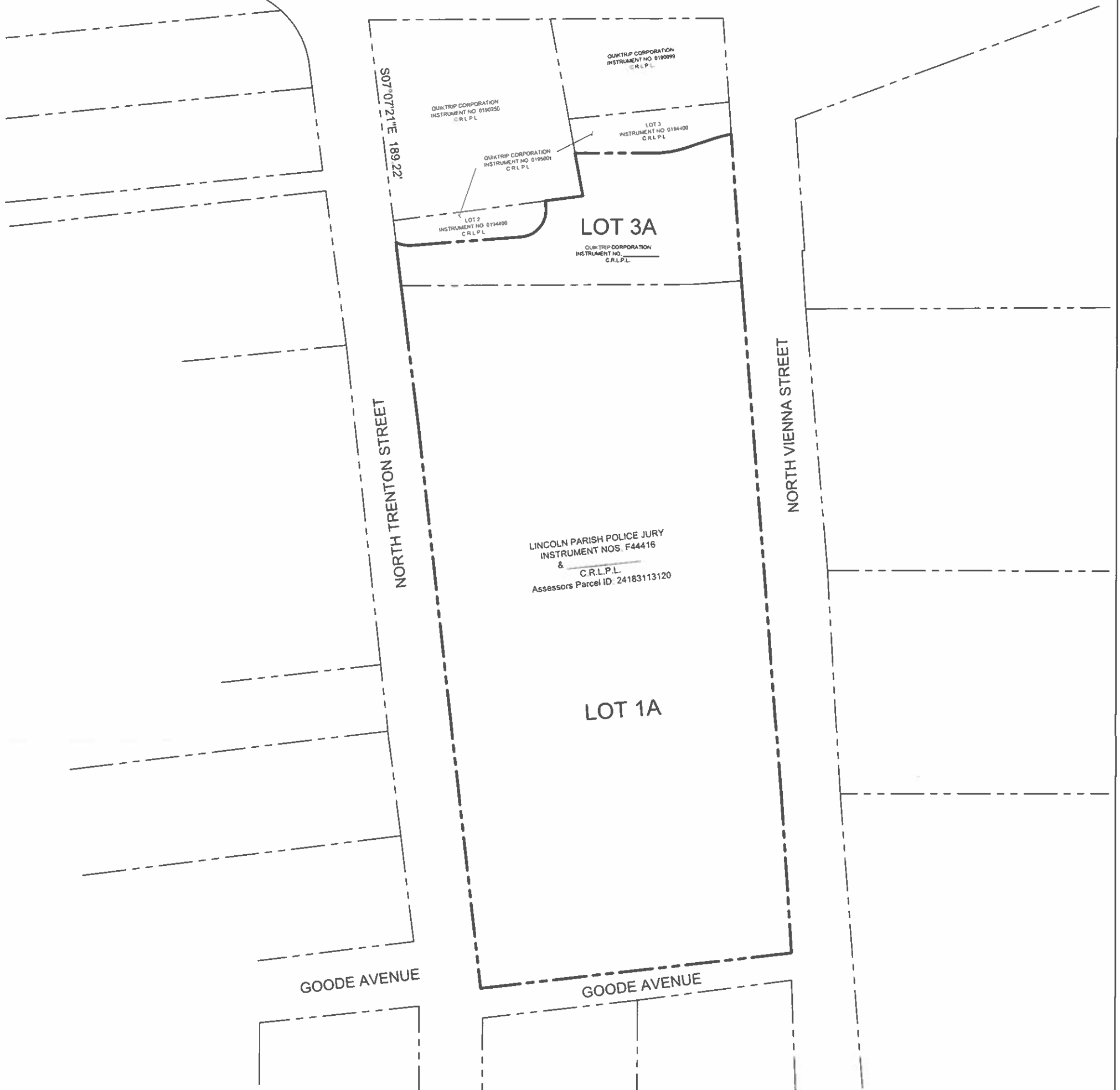


COVER SHEET

IH-20 SERVICE ROAD



SURVEY LEGEND

CONTROL LEGEND

- Property Corner (As Noted)
- XF "X" FOUND IN CONCRETE

EXISTING FEATURES

- Property R/W Line (QT Net)
- Property R/W Lot Line (Others)

ABBREVIATION LEGEND

- POB Point Of Beginning
- C.R.L.P.L. Conveyance Records Lincoln Parish, Louisiana
- CIRS 1/2" Iron Rod with Cap Set stamped "1519 SURVEYING"
- D.O.T.D. Department of Transportation and Development
- FMN Found Mag Nail
- CIRF M&C Found 5/8" capped iron rod stamped "MCKIM & CREED"



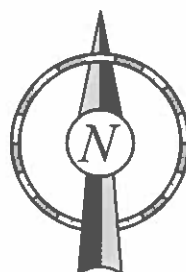
PROJECT NO.: 10022

Bowman

© 2023 Bowman Consulting Group, Ltd.

1200 West Magnolia Blvd., Suite 300
Fort Worth, TX 76104
TBPELS #10120600

Phone: (214) 484-8586
www.bowman.com
LA-VF 846



Replat
Lincoln Parish Library
Subdivision
Lot 1A & 3A
5.1730 acres
NW 1/4 of NW 1/4 of Section 24,
Township 18 N, Range 3 W, North of Red
River Land District, Louisiana Meridian,
Ruston City, Lincoln Parish, Louisiana

SHEET NUMBER: 1 OF 4