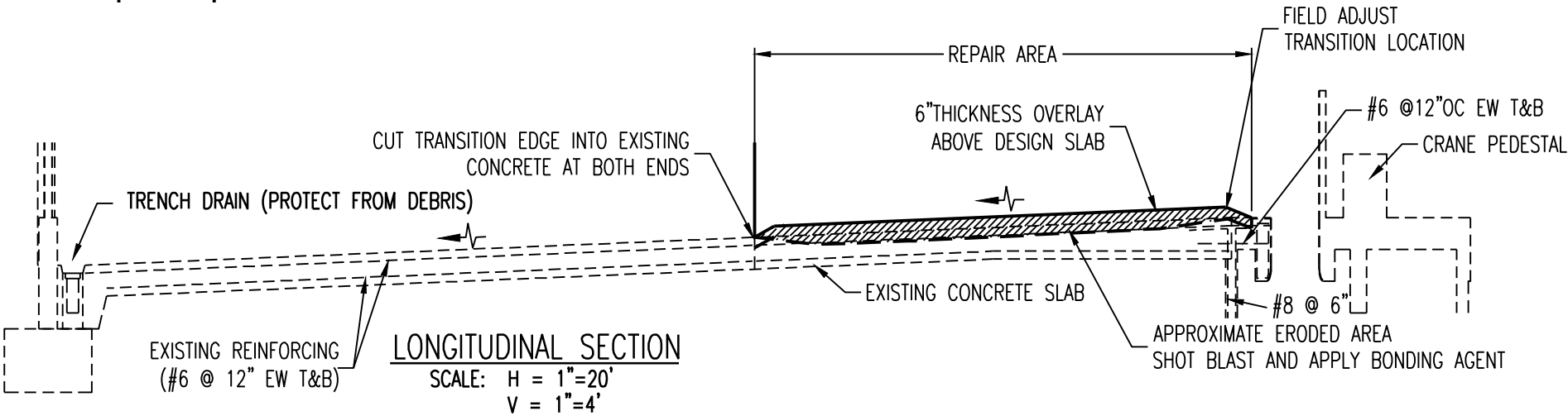
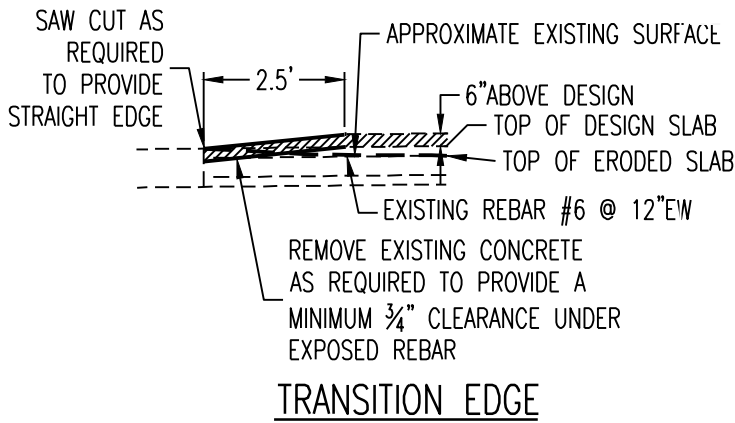
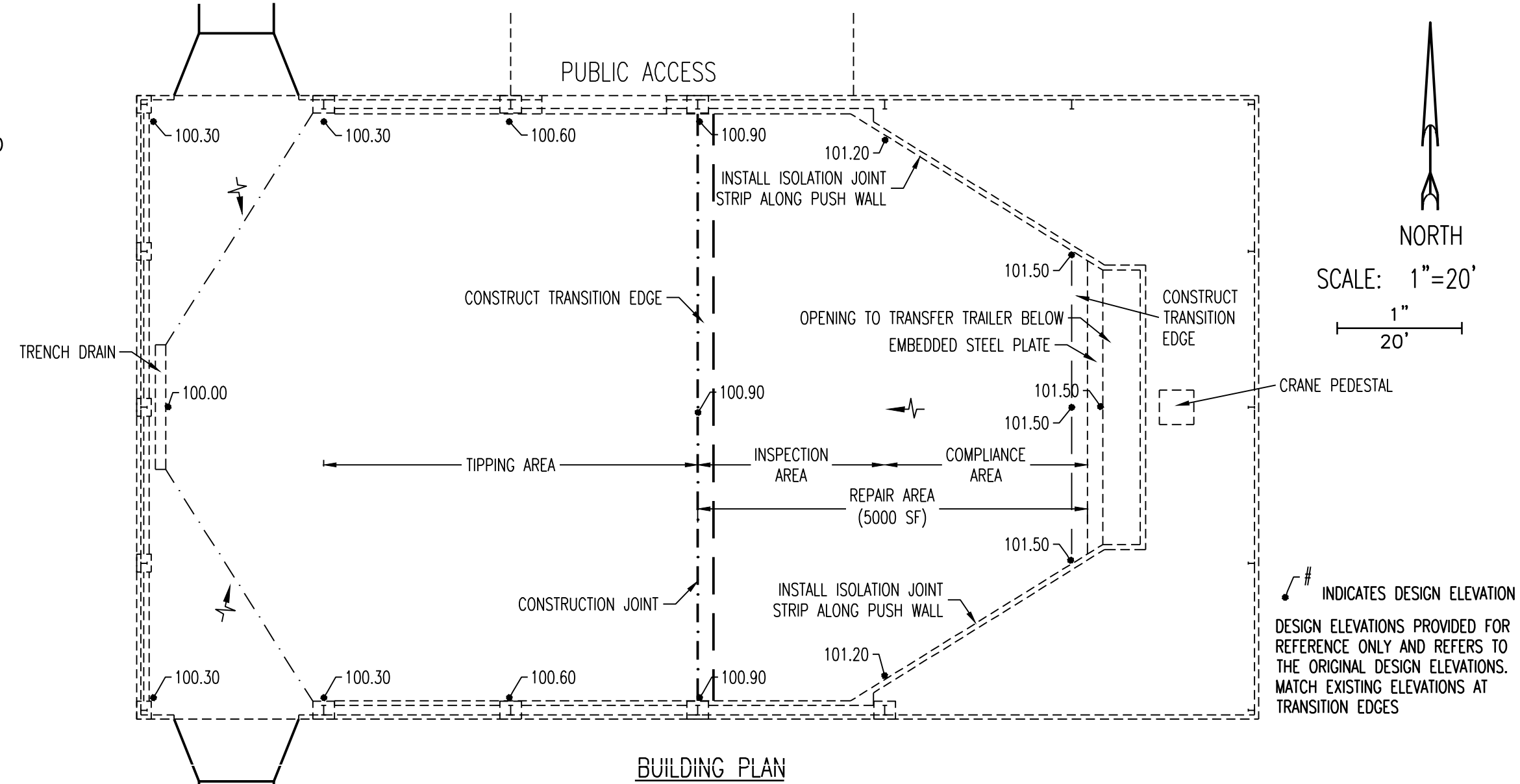
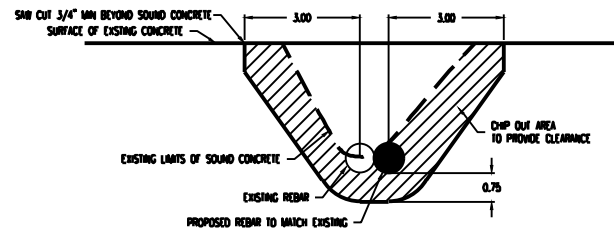


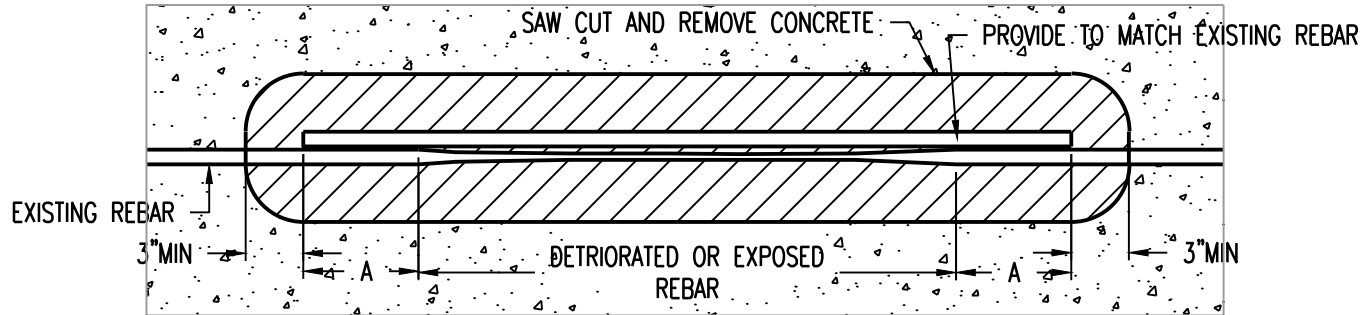
SCOPE OF WORK:

1. PERFORM A PRECONSTRUCTION TOPOGRAPHIC SURVEY OF THE REPAIR AREA ON A GRID SPACING NOT TO EXCEED 10 FEET. GRID SHALL BE ESTABLISHED SO THAT IT IS REPEATABLE FOR FUTURE MEASUREMENTS.
2. CLEAN SURFACE USING SHOT BLAST OR OTHER APPROVED METHOD TO REMOVE LOOSE MATERIAL AND DEBRIS AS NEEDED TO PROVIDE A SUITABLE SURFACE FOR THE BONDING AGENT.
3. CUT TRANSITION EDGES.
4. REPAIR EXPOSED REBAR PER DETAILS ON SHEET 2.
5. INSTALL ISOLATION JOINT MATERIAL ALONG PUSHWALLS. ATTACH TO EXISTING AS NEEDED TO HOLD IN PLACE DURING CONCRETE PLACEMENT.
6. APPLY BONDING AGENT PER MANUFACTURER'S WRITTEN DIRECTIONS TO THE CLEANED AREA AND TRANSITION EDGES.
7. POUR CONCRETE OVERLAY, CONSOLIDATE AND TROWEL FINISH GRADED TO PROVIDE POSITIVE DRAINAGE TOWARD THE TRENCH DRAIN. PROVIDE A CLASS B TOLERANCE OF LESS THAN 1/4" GAP UNDER A 10 FOOT LONG STRAIGHT EDGE.
8. SAMPLE AND TEST CONCRETE FOR WATER TO CEMENTITIOUS MATERIALS RATIO, AIR CONTENT, CHLORIDE CONTENT, TEMPERATURE, SLUMP AND COMPRESSIVE STRENGTH ONCE PER 50 CUBIC YARDS OR ONE DAY'S PRODUCTION, WHICHEVER IS LESS. PULL 4 TEST CYLINDERS FOR EACH REQUIRED SAMPLE. TEST ONE CYLINDER AT 24 HOURS, 48 HOURS, 7 DAYS AND 28 DAYS.
9. CURE CONCRETE.
10. PERFORM POST CONSTRUCTION TOPOGRAPHIC SURVEY OF THE COMPLETED WORK ON SAME GRID AS PREDEVELOPMENT TOPOGRAPHIC SURVEY.
11. REMOVE ALL CONSTRUCTION DEBRIS AND OTHER ITEMS FROM THE BUILDING.





SECTION VIEW



PLAN VIEW

NOTES:

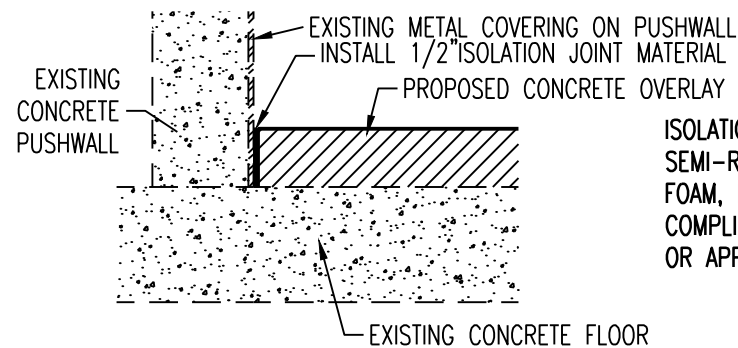
1. REPLACE REBAR WHEN SECTION LOSS IS GREATER THAN 20% OR WHEN BENT SUCH THAT IT CAN NOT BE RETURNED TO THE PROPER POSITION.
2. REMOVE CONCRETE IN THE VICINITY OF REBAR REPLACEMENT AS SHOWN OR
3. WHEN EXISTING REBAR IS EXPOSED MORE THAN 50%.
4. ABRASIVELY CLEAN EXPOSED REBAR.
5. SAW CUTTING IS NOT REQUIRED WHERE THE REPAIRED AREA WILL BE COVERED BY THE PROPOSED CONCRETE OVERLAY. ONLY SAW CUT WHEN REPAIR AREA IS IN AN AREA NOT BEING OVERLAYED.

OVER LAP LENGTH "A"	
BAR SIZE	OVERLAP
5	38"
6"	46"
8"	76"

EXPOSED REBAR REPAIR

MATERIAL SPECIFICATIONS:

1. CONCRETE SHALL MEET THE FDOT STANDARD SPECIFICATIONS FOR ROAD AND BRIDGE CONSTRUCTION FY 2023-2024 SECTION 346. CEMENT SHALL BE TYPE II, CONCRETE SHALL BE CLASS V HAVING A MINIMUM 28-DAY MINIMUM COMPRESSIVE STRENGTH OF 6,500 PSI, A MINIMUM WATER TO CEMENTITIOUS MATERIALS RATIO OF 0.37 WITH A MINIMUM CEMENTITIOUS MATERIALS CONTENT OF 600 POUNDS PER CUBIC YARD WITH A TARGET SLUMP OF 3 INCHES. THE MAXIMUM ALLOWABLE CHLORINE CONTENT SHALL BE 0.40 POUNDS PER CUBIC YARD. THE AIR CONTENT SHALL BE LESS THAN 6%. SUBMIT CONCRETE MIX TO ENGINEER FOR APPROVAL.
2. REINFORCING BARS SHALL BE ASTM 615, 60 KSI, DEFORMED BILLET STEEL BARS, UNFINISHED.
3. BONDING AGENT SHALL BE SIKADUR-32 HI-MOD OR APPROVED EQUAL.
4. ISOLATION JOINT MATERIAL SHALL BE A SEMI-RIGID, CLOSED-CELL POLYPROPYLENE FOAM, PREFORMED JOINT FILLER THAT COMPLIES WITH ASTM D8139 1/2" MINIMUM THICKNESS. NOMAFLEX OR APPROVED EQUAL.



ISOLATION JOINT MATERIAL SHALL BE A SEMI-RIGID, CLOSED-CELL POLYPROPYLENE FOAM, PREFORMED JOINT FILLER THAT COMPLIES WITH ASTM D8139. NOMAFLEX OR APPROVED EQUAL.

ISOLATION JOINT

D. Andrew Carswell, State of Florida, Professional Engineer, License No. 45831
SIGNED
This item has been electronically signed and sealed by D. Andrew Carswell, PE on the date indicated here using a SHA authentication code.
Printed copies of this document are not considered signed and sealed and the SHA code must be verified on any electronic copies.

D. ANDREW CARSWELL, PE#45831
DATE

LEVY COUNTY BOARD OF COUNTY COMMISSIONERS
COUNTY ENGINEER
310 SCHOOL STREET, BRONSON, FL 32621
PHONE: 352-529-7832
EMAIL: COUNTYENGINEER@LEVYCOUNTY.ORG

SOLID WASTE TRANSFER STATION
TIPPING FLOOR REPAIR
LEVY COUNTY SOLID WASTE MANAGEMENT FACILITY

DETAILS
DATE: 9/9/2024
DRAWN BY: AC
PROJECT NO.: 2023009
SHEET 2 OF 2