

MERIDIAN  
HEALTHCARE

# ANNUAL REPORT 2025





## ***Meridian provides whole-person care rooted in hope and empathy***

Established in 1971, Meridian Healthcare has been providing behavioral health treatment and services to North Central Florida communities for over 50 years.

With locations serving 14 counties across North Central Florida, Meridian is highly committed to supporting and restoring hope to individuals in all of the communities we serve.

It is Meridian's ambition to transform our communities, together, from the inside out.



-  Meridian Campus
-  24/7 Crisis Facilities, Residential Treatment & Primary Care Clinics

# OUR VALUES



Hope

A healthy dose of *hope* helps us stay positive on the most challenging days.



Empathy

We are committed to compassion, understanding, and *genuine* human connection.



Accountability

We all have a *responsibility* to work with integrity as we strive to deliver high-quality care.



Resilience

Our community depends on us to show up and *continually* give our best.



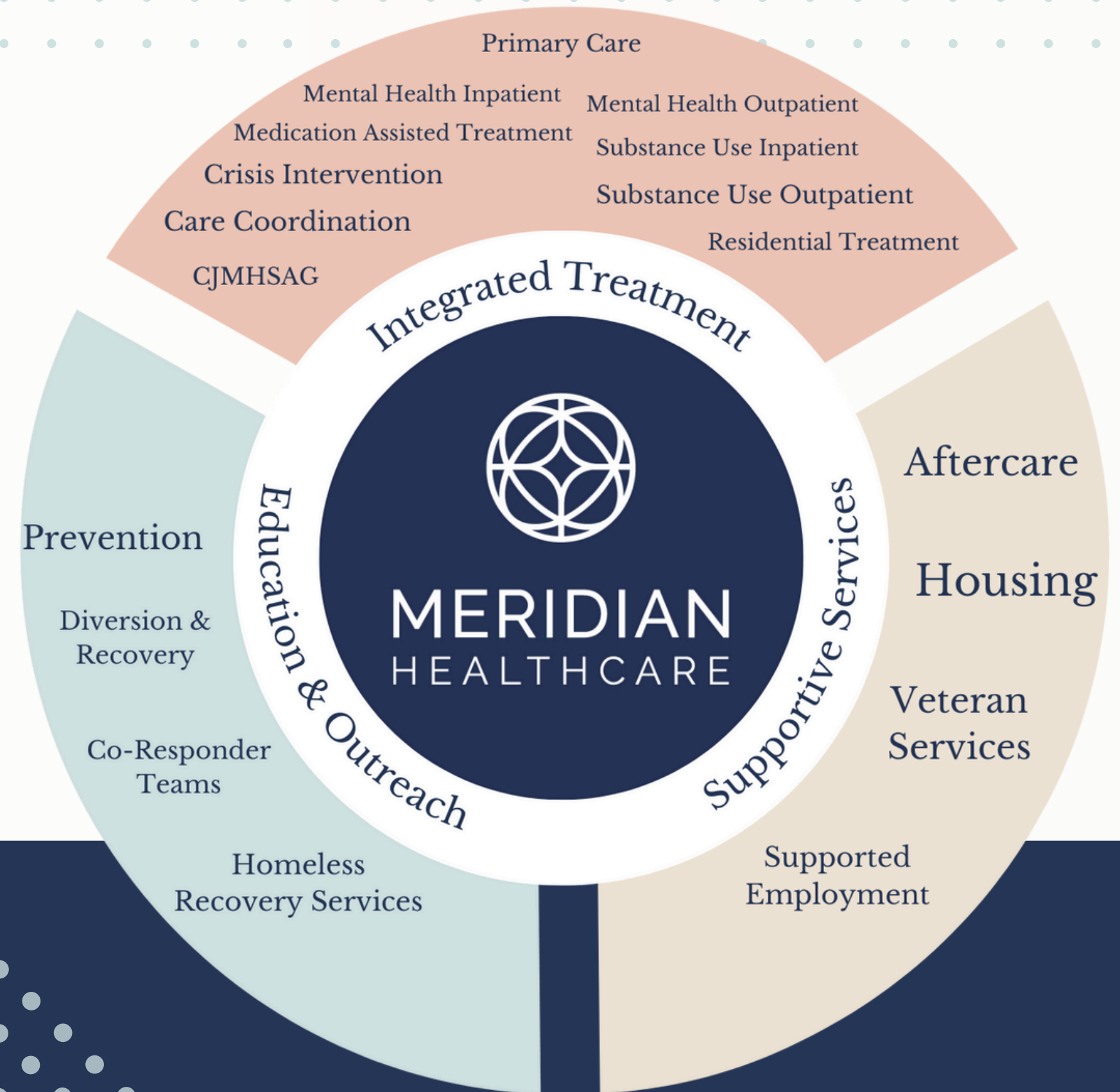
Teamwork

*Collaboration* is key to providing exceptional care.

# OUR PROGRAMS

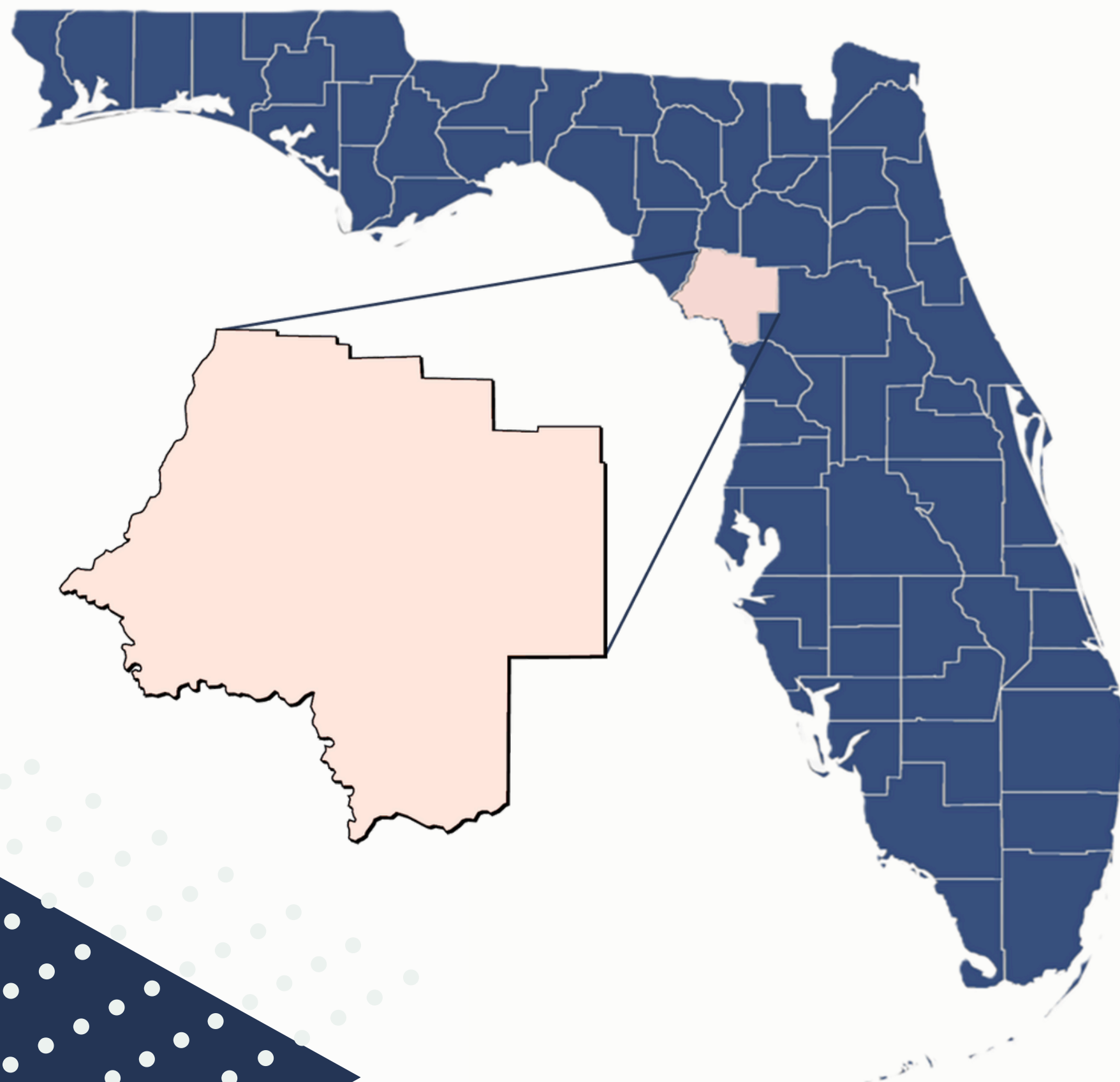
At Meridian, we provide a comprehensive continuum of care to address the needs of children, adults, and families.

Driven by our commitment to community well-being, we continue to grow and evolve to meet the unique needs of those we serve across our service areas.





# TELEHEALTH SERVICES



01

## Service Utilization

698 Levy County residents have received a total of 4468 telehealth services to date in FYE 2025\*

02

## Increased Access to Care

Telehealth permits individuals faster access to treatment and allows them to be seen in the comfort of their own home

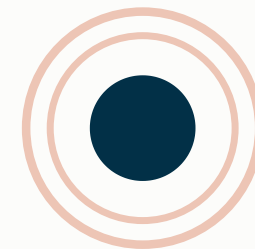
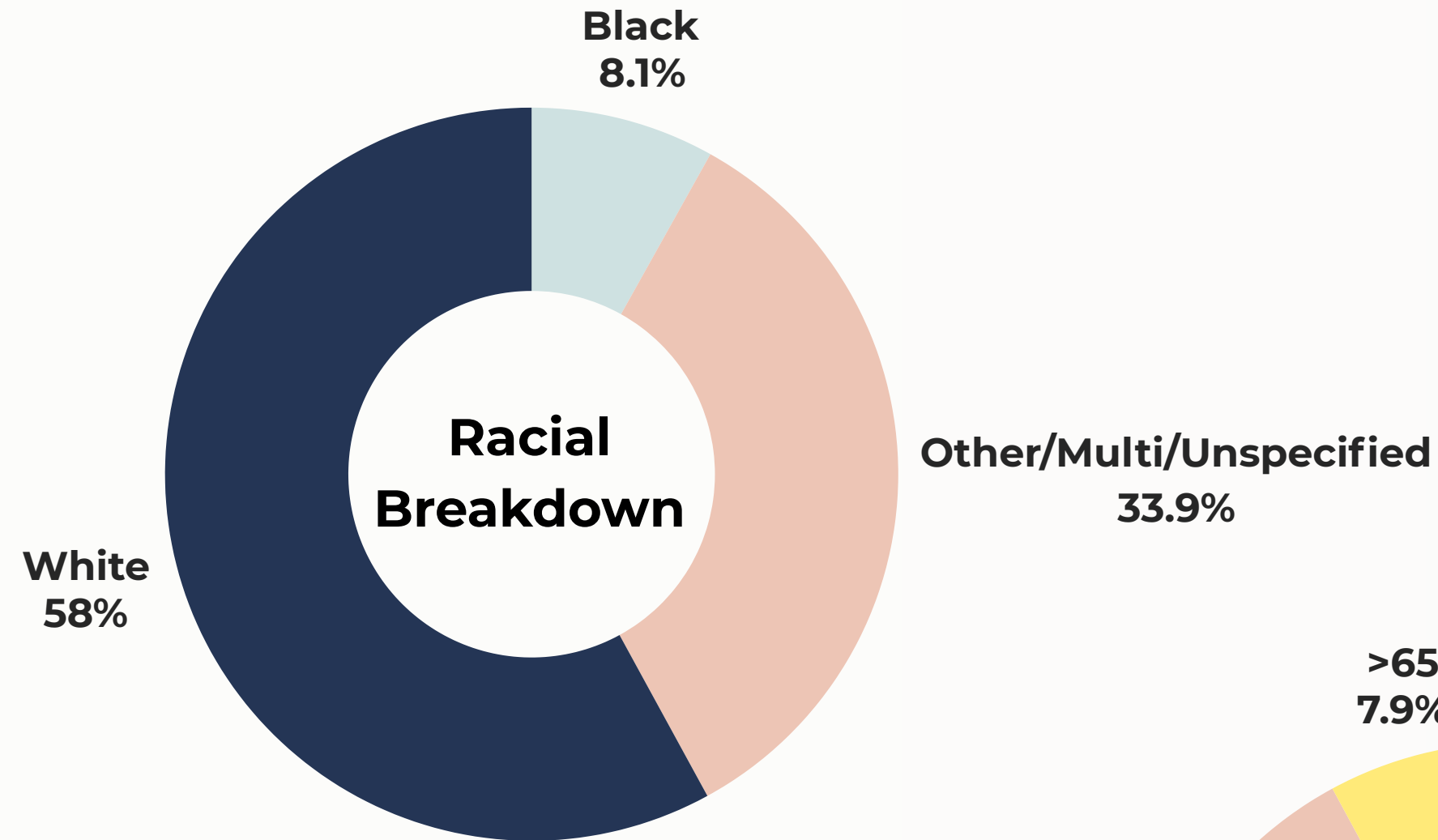
03

## Device Assistance

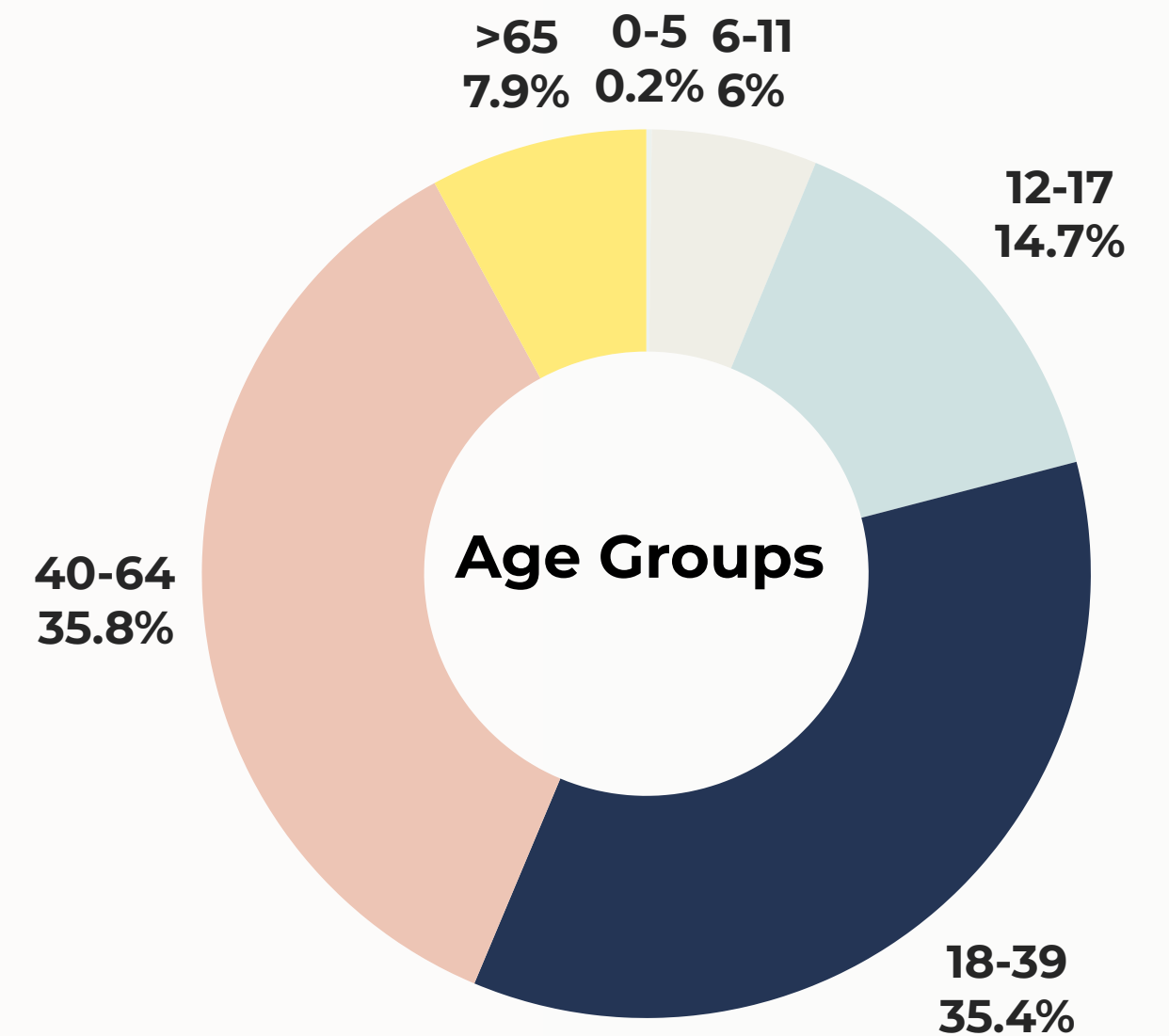
Individuals with no device may qualify for a Meridian-provided tablet with data plan at no cost to them

\* July 1, 2024 through May 27, 2025

# WHO WE SERVE IN LEVY COUNTY



**7% of Clients Served  
Identified as Hispanic**



# WHAT DO CLIENTS SAY?

Improved functioning  
and reduction of  
symptoms overall

**75% of Adults**

**74% of Children**



I would return to  
Meridian if I ever have  
behavioral health  
needs in the future



I would recommend Meridian  
to a family member or friend  
who needed help



Meridian staff  
believe I can get  
better



Meridian's services  
have helped me

## National Benchmarks

- Recovery rates from serious mental illness are approximately 33% for a period of 12 months or longer
- Recovery rates from addictions are estimated at 57% after 12 months
- Recovery rates for diabetes, hypertension, and other chronic illnesses range from 37-56%



# SERVICES WE PROVIDE TO LEVY COUNTY RESIDENTS

July 1, 2024  
through  
May 28, 2025

Adults



Children



# PAYER MIX



## Payers

Meridian accepts a wide range of payers, ensuring that local, public funds are the payer of last resort.



## Poverty

The majority of clients we see are at or below federal poverty guidelines.

- 84% for Levy County
- 3% of services provided were ineligible for any subsidy to address the cost of care.



## Indigent Care

Indigent care is funded through Medicaid, State DCF and local matching funds.

- 56% of services provided thus far in FYE 2025 have been paid for with indigent care funding from the state and county
- 24% were covered by Medicaid
- 21% have some form of third-party insurance, but insurance only covers 9.5% of the services these individuals need and receive.

# FUNDING REQUIREMENT



## Meridian Requirement

Meridian is required to generate local matching funds for some of our state and federal funds. Our expected FYE 2026 local match requirement is \$2,346,078.



## Local Match

We are requesting the same amount as last year to go towards the local match required, keeping the County contract with Meridian at \$91,932.



# CONTACT INFORMATION

## Email

lauren\_cohn@mbhcci.org

## Phone

352.374.5600 ext. 8220

## Website

[www.mymeridianhealthcare.org](http://www.mymeridianhealthcare.org)

## Mailing Address

1565 SW Williston Road  
Gainesville, FL 32608

