

Pause Request

9/30/21

TRAFFIC COUNT

LCR ROAD NO: MT 106

911 ADDRESS: SE 140 Ave

SUBDIVISION NAME: Williston HGL # 1

BEGINNING DATE: 11-01-2021 ENDING DATE: 11-8-21

THREE DAY COUNT: YES NO 7

COUNTER NUMBER: 1145318

ENTRANCE POINT: 25' ^{South} OF NEWCO AVE

DAILY COUNT: 456

TOTAL COUNT: 3191

COUNTER NUMBER: 43163

EXIT POINT: 25' ~~South~~ North of SE 10 ST

DAILY COUNT: 320

TOTAL COUNT: 2241

DISTANCE: 5183 MILES: 9

HOUSE COUNT: 6

ROCK ROAD: PAVED ROAD:

Steve Laine
NAME

11-01-2021
DATE

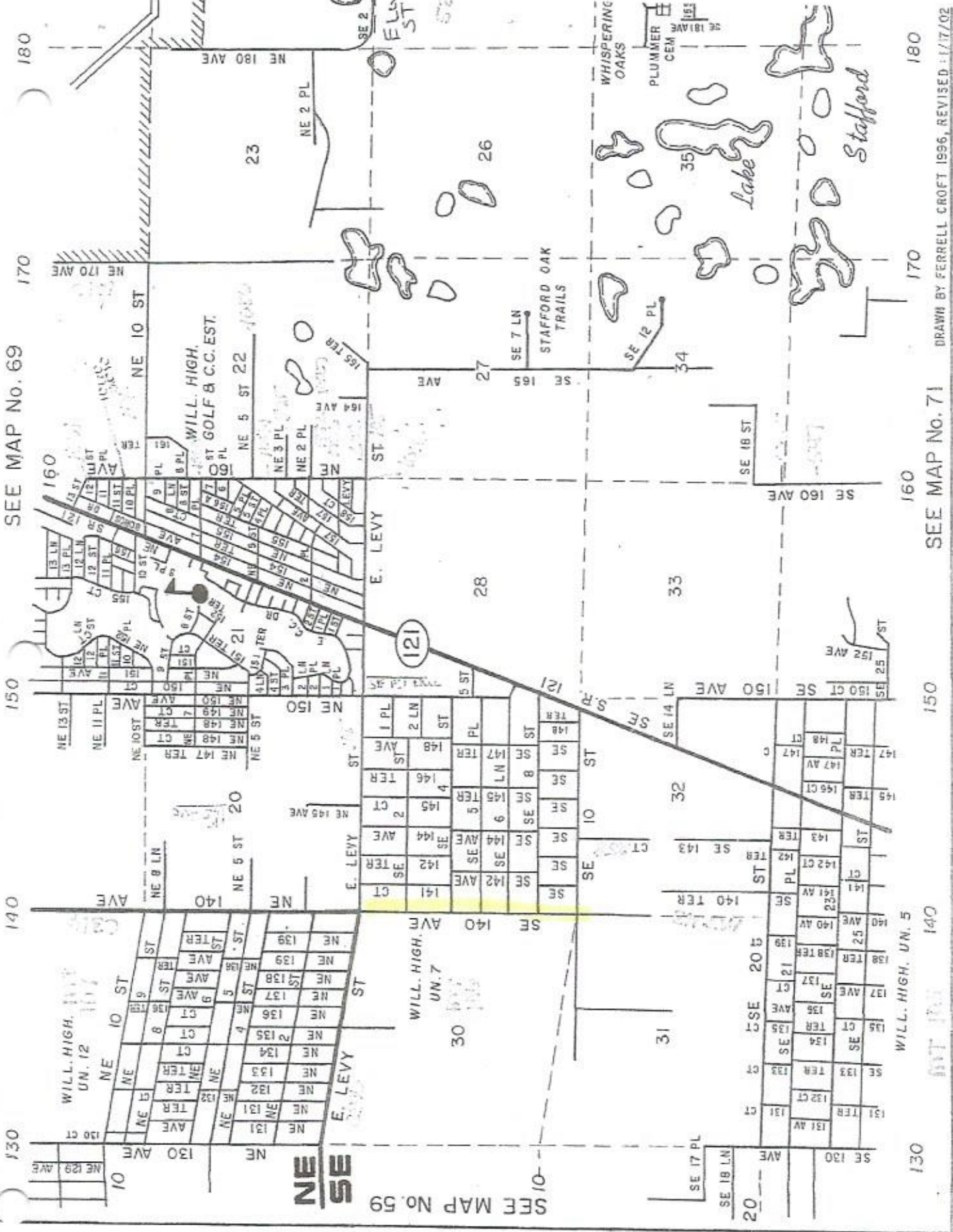
YES

Road needs
traffic count
Staff review
2/28/22

100- SE 10 ST power lines - Back opposite 9130/15 - Fossil pa

SEE MAP No. 69

SEE MAP No. 59



170
180
160
150
140
130

170
180
160
150
140
130

170
180
160
150
140
130

170
180
160
150
140
130

DRAWN BY FERRELL CROFT 1996, REVISED 1/17/02

SEE MAP No. 71

10/20/21
Don S.H.

Alice Lalonde

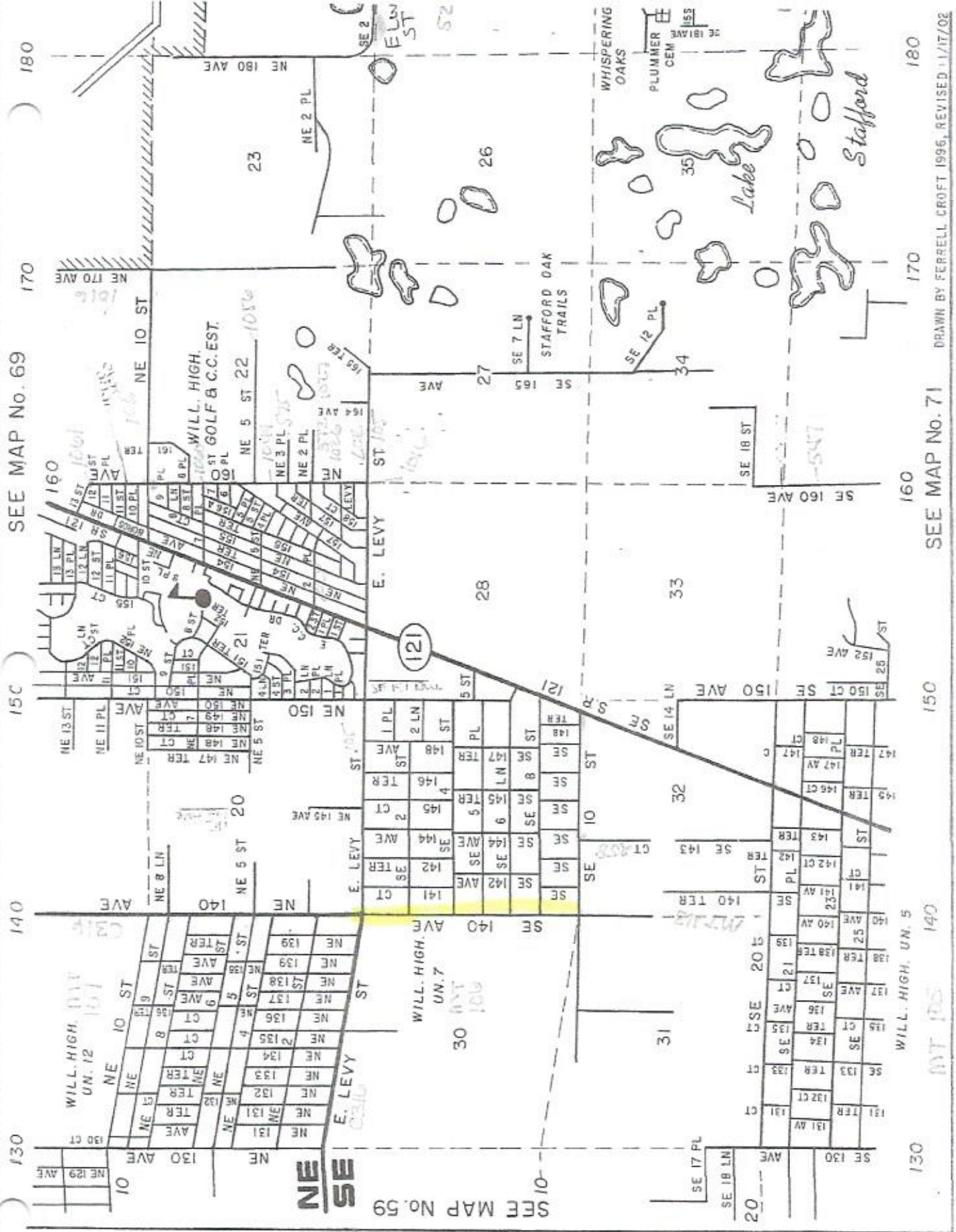
From: Lynn Botula-Griffith <lgriffith01@live.com>
Sent: Thursday, September 30, 2021 2:17 PM
To: Alice Lalonde
Subject: [** Potential SPAM **] SE 140th Ave Williston 32696

Hi good afternoon. I want to find out what can be done about the unpaved portion of SE 140th in the Williston Highlands. This is an extremely high traffic, it used road. And the mess it creates for the residents along the road is simply out of control. Along with the mess, the people that speed down the road is extremely dangerous, for kids, animals or anything that gets in the path. I'm am over it. It is heavily used by the farm across the street, large machinery, and any through traffic. We need something done before its too late. What do I need to do to get the ball rolling on this?

Lynn Botula-Griffith
451 SE 140th Ave
352-598-2836

MT 106

MT100 - SE 10 ST power lines - back opposite 912/101 - Fishall pa



SEE MAP No. 59

SEE MAP No. 69

SEE MAP No. 71

SEE MAP No. 72

SEE MAP No. 73

SEE MAP No. 74

SEE MAP No. 75

SEE MAP No. 76

SEE MAP No. 77

SEE MAP No. 78

SEE MAP No. 79

SEE MAP No. 80

SEE MAP No. 81

SEE MAP No. 82

SEE MAP No. 83

SEE MAP No. 84

SEE MAP No. 85

SEE MAP No. 86

SEE MAP No. 87

SEE MAP No. 88

SEE MAP No. 89

SEE MAP No. 90

SEE MAP No. 91

SEE MAP No. 92

SEE MAP No. 93

SEE MAP No. 94

SEE MAP No. 95

SEE MAP No. 96

SEE MAP No. 97

130

140

150

160

170

180

DRAWN BY FERRELL CROFT 1996, REVISED 11/17/02