

Power Request

7/14/21

TRAFFIC COUNT

LCR ROAD NO: LCR 1067

911 ADDRESS: NE 40 ST

SUBDIVISION NAME: Williston

BEGINNING DATE: 10-27-21 ENDING DATE: 11-01-2021

THREE DAY COUNT: YES  NO Weekend Count 5 days

COUNTER NUMBER: H43163

ENTRANCE POINT: 25' South of NE 140 Ave

DAILY COUNT: 273

TOTAL COUNT: 1367

COUNTER NUMBER: H 45318

EXIT POINT: 25' East of NE 38 #1

DAILY COUNT: 197

TOTAL COUNT: 983

DISTANCE: 2958 MILES: .5

HOUSE COUNT: 3

ROCK ROAD:  PAVED ROAD:

Steve Keene  
NAME

10-27-21  
DATE

\* Road marks entire +  
Yes  
Staff  
review 2/28/22

SEE MAP NO. 67

150

140

130

75 160 170 180

C335

1069

NE 73 ST  
WAKONDA EST  
NE 71 ST

NE 84 PL  
SHADY AC.

ROLLING AC.  
NE 70 ST

NE 136 AVE  
NE 138 TER

16 17 18 19 20 21 22 23

SUNCOAST EST  
140 AVE

SUNNY RIDGE  
NE 139  
NE 137  
NE 135  
NE 133  
NE 131  
NE 128

COUNTRY EST  
NE 157 TER  
NE 155 AVE  
NE 153 PL  
NE 151 PL  
NE 149 AVE  
NE 147 CT  
NE 145 AVE  
NE 143 AVE  
NE 141 AVE  
NE 139 AVE  
NE 137 AVE  
NE 135 AVE  
NE 133 AVE  
NE 131 AVE  
NE 129 AVE  
NE 127 CT

60 ST  
NE 65 ST  
NE 56 ST  
NE 53 LN  
NE 51 ST  
NE 50 AVE  
NE 49 PL  
NE 48 PL  
NE 46 ST  
NE 45 ST  
NE 44 PL  
NE 43 LN  
NE 42 PL  
NE 41 ST  
NE 40 MUST  
NE 38 PL  
NE 37 ST  
NE 36 PL  
NE 35 AVE  
NE 34 AVE  
NE 33 AVE  
NE 32 AVE  
NE 31 ST  
NE 30 PL  
NE 29 AVE  
NE 28 AVE  
NE 27 ST  
NE 26 AVE  
NE 25 AVE  
NE 24 AVE  
NE 23 AVE  
NE 22 AVE  
NE 21 AVE  
NE 20 AVE  
NE 19 AVE  
NE 18 AVE  
NE 17 AVE  
NE 16 AVE  
NE 15 AVE  
NE 14 AVE  
NE 13 AVE  
NE 12 AVE  
NE 11 AVE  
NE 10 AVE  
NE 9 AVE  
NE 8 AVE  
NE 7 AVE  
NE 6 AVE  
NE 5 AVE  
NE 4 AVE  
NE 3 AVE  
NE 2 AVE  
NE 1 AVE  
NE 0 AVE

60 ST  
NE 65 ST  
NE 56 ST  
NE 53 LN  
NE 51 ST  
NE 50 AVE  
NE 49 PL  
NE 48 PL  
NE 46 ST  
NE 45 ST  
NE 44 PL  
NE 43 LN  
NE 42 PL  
NE 41 ST  
NE 40 MUST  
NE 38 PL  
NE 37 ST  
NE 36 PL  
NE 35 AVE  
NE 34 AVE  
NE 33 AVE  
NE 32 AVE  
NE 31 ST  
NE 30 PL  
NE 29 AVE  
NE 28 AVE  
NE 27 ST  
NE 26 AVE  
NE 25 AVE  
NE 24 AVE  
NE 23 AVE  
NE 22 AVE  
NE 21 AVE  
NE 20 AVE  
NE 19 AVE  
NE 18 AVE  
NE 17 AVE  
NE 16 AVE  
NE 15 AVE  
NE 14 AVE  
NE 13 AVE  
NE 12 AVE  
NE 11 AVE  
NE 10 AVE  
NE 9 AVE  
NE 8 AVE  
NE 7 AVE  
NE 6 AVE  
NE 5 AVE  
NE 4 AVE  
NE 3 AVE  
NE 2 AVE  
NE 1 AVE  
NE 0 AVE

60 ST  
NE 65 ST  
NE 56 ST  
NE 53 LN  
NE 51 ST  
NE 50 AVE  
NE 49 PL  
NE 48 PL  
NE 46 ST  
NE 45 ST  
NE 44 PL  
NE 43 LN  
NE 42 PL  
NE 41 ST  
NE 40 MUST  
NE 38 PL  
NE 37 ST  
NE 36 PL  
NE 35 AVE  
NE 34 AVE  
NE 33 AVE  
NE 32 AVE  
NE 31 ST  
NE 30 PL  
NE 29 AVE  
NE 28 AVE  
NE 27 ST  
NE 26 AVE  
NE 25 AVE  
NE 24 AVE  
NE 23 AVE  
NE 22 AVE  
NE 21 AVE  
NE 20 AVE  
NE 19 AVE  
NE 18 AVE  
NE 17 AVE  
NE 16 AVE  
NE 15 AVE  
NE 14 AVE  
NE 13 AVE  
NE 12 AVE  
NE 11 AVE  
NE 10 AVE  
NE 9 AVE  
NE 8 AVE  
NE 7 AVE  
NE 6 AVE  
NE 5 AVE  
NE 4 AVE  
NE 3 AVE  
NE 2 AVE  
NE 1 AVE  
NE 0 AVE

60 ST  
NE 65 ST  
NE 56 ST  
NE 53 LN  
NE 51 ST  
NE 50 AVE  
NE 49 PL  
NE 48 PL  
NE 46 ST  
NE 45 ST  
NE 44 PL  
NE 43 LN  
NE 42 PL  
NE 41 ST  
NE 40 MUST  
NE 38 PL  
NE 37 ST  
NE 36 PL  
NE 35 AVE  
NE 34 AVE  
NE 33 AVE  
NE 32 AVE  
NE 31 ST  
NE 30 PL  
NE 29 AVE  
NE 28 AVE  
NE 27 ST  
NE 26 AVE  
NE 25 AVE  
NE 24 AVE  
NE 23 AVE  
NE 22 AVE  
NE 21 AVE  
NE 20 AVE  
NE 19 AVE  
NE 18 AVE  
NE 17 AVE  
NE 16 AVE  
NE 15 AVE  
NE 14 AVE  
NE 13 AVE  
NE 12 AVE  
NE 11 AVE  
NE 10 AVE  
NE 9 AVE  
NE 8 AVE  
NE 7 AVE  
NE 6 AVE  
NE 5 AVE  
NE 4 AVE  
NE 3 AVE  
NE 2 AVE  
NE 1 AVE  
NE 0 AVE

60 ST  
NE 65 ST  
NE 56 ST  
NE 53 LN  
NE 51 ST  
NE 50 AVE  
NE 49 PL  
NE 48 PL  
NE 46 ST  
NE 45 ST  
NE 44 PL  
NE 43 LN  
NE 42 PL  
NE 41 ST  
NE 40 MUST  
NE 38 PL  
NE 37 ST  
NE 36 PL  
NE 35 AVE  
NE 34 AVE  
NE 33 AVE  
NE 32 AVE  
NE 31 ST  
NE 30 PL  
NE 29 AVE  
NE 28 AVE  
NE 27 ST  
NE 26 AVE  
NE 25 AVE  
NE 24 AVE  
NE 23 AVE  
NE 22 AVE  
NE 21 AVE  
NE 20 AVE  
NE 19 AVE  
NE 18 AVE  
NE 17 AVE  
NE 16 AVE  
NE 15 AVE  
NE 14 AVE  
NE 13 AVE  
NE 12 AVE  
NE 11 AVE  
NE 10 AVE  
NE 9 AVE  
NE 8 AVE  
NE 7 AVE  
NE 6 AVE  
NE 5 AVE  
NE 4 AVE  
NE 3 AVE  
NE 2 AVE  
NE 1 AVE  
NE 0 AVE

60 ST  
NE 65 ST  
NE 56 ST  
NE 53 LN  
NE 51 ST  
NE 50 AVE  
NE 49 PL  
NE 48 PL  
NE 46 ST  
NE 45 ST  
NE 44 PL  
NE 43 LN  
NE 42 PL  
NE 41 ST  
NE 40 MUST  
NE 38 PL  
NE 37 ST  
NE 36 PL  
NE 35 AVE  
NE 34 AVE  
NE 33 AVE  
NE 32 AVE  
NE 31 ST  
NE 30 PL  
NE 29 AVE  
NE 28 AVE  
NE 27 ST  
NE 26 AVE  
NE 25 AVE  
NE 24 AVE  
NE 23 AVE  
NE 22 AVE  
NE 21 AVE  
NE 20 AVE  
NE 19 AVE  
NE 18 AVE  
NE 17 AVE  
NE 16 AVE  
NE 15 AVE  
NE 14 AVE  
NE 13 AVE  
NE 12 AVE  
NE 11 AVE  
NE 10 AVE  
NE 9 AVE  
NE 8 AVE  
NE 7 AVE  
NE 6 AVE  
NE 5 AVE  
NE 4 AVE  
NE 3 AVE  
NE 2 AVE  
NE 1 AVE  
NE 0 AVE

60 ST  
NE 65 ST  
NE 56 ST  
NE 53 LN  
NE 51 ST  
NE 50 AVE  
NE 49 PL  
NE 48 PL  
NE 46 ST  
NE 45 ST  
NE 44 PL  
NE 43 LN  
NE 42 PL  
NE 41 ST  
NE 40 MUST  
NE 38 PL  
NE 37 ST  
NE 36 PL  
NE 35 AVE  
NE 34 AVE  
NE 33 AVE  
NE 32 AVE  
NE 31 ST  
NE 30 PL  
NE 29 AVE  
NE 28 AVE  
NE 27 ST  
NE 26 AVE  
NE 25 AVE  
NE 24 AVE  
NE 23 AVE  
NE 22 AVE  
NE 21 AVE  
NE 20 AVE  
NE 19 AVE  
NE 18 AVE  
NE 17 AVE  
NE 16 AVE  
NE 15 AVE  
NE 14 AVE  
NE 13 AVE  
NE 12 AVE  
NE 11 AVE  
NE 10 AVE  
NE 9 AVE  
NE 8 AVE  
NE 7 AVE  
NE 6 AVE  
NE 5 AVE  
NE 4 AVE  
NE 3 AVE  
NE 2 AVE  
NE 1 AVE  
NE 0 AVE

SEE MAP No. 69

140

130

180

DRAWN BY FERRELL CROFT - 1996, REVISED: 12/6/01

SEE MAP NO. 57



Alice Lalonde

From: William Mills <wjmill86@gmail.com>  
Sent: Wednesday, July 14, 2021 2:53 PM  
To: Alice Lalonde  
Subject: Re: Road maintenance

Hey Alice,

Thank you for the information. Can we please get the workout submitted for the repair at least. How do I get the ball rolling on adding this road to the paving list? If not the entire road at least a portion where the damage constantly is. I know this road gets used as a through road for people heading over to u pick lane (NE 140th Ave). The below image illustrates what I am talking about. Blue lines are all paved, the red line is what is not paved but constantly damaged by rain or overuse. The road where red and blue meet is NE 127th ct, it's partially paved already.



LCR 1047  
NE 40 ST

Thanks,  
Jake

On Wed, Jul 14, 2021 at 2:21 PM Alice Lalonde <levyrd@levycounty.org> wrote:

I can put in a work order for you to have this road fixed. Our department can bring roads before the board to be approved to be placed on the paving list. Currently we have @30 roads on the list. The chances of getting a road paved at this point is years...years away. Furthermore- if you are inquiring for your road- NE 127 CT, we would have to take the subdivision into our taxing unit and every landowner would have to agree in order for us to even consider plus

all the other criteria that the road has to pass to be considered to be placed on the paving list. 20 homes per mile and 200 vehicle trips per day would be criteria that is needed.

I am not trying to sound mean- in an email it's hard to show emotion and sometimes words are very blunt. I am not trying to be either one but I would rather tell you the truth than lead you along and then not be able to give you the paved road. I feel like empty promises does nothing for either party.

If you have further questions, please let me know.

Respectfully,

Alice

Alice E. LaLonde

Administrative Coordinator

*Levy County Road Department*

620 North Hathaway Ave

PO Box 336

Bronson, FL 32621

[levyrd@levycounty.org](mailto:levyrd@levycounty.org)

[www.levycounty.org](http://www.levycounty.org)

352-486-3358 phone

352-486-5139 fax

Under Florida law, email addresses are public records. Your e-mail communications may therefore be subject to public disclosure. If you do not want your email address released in response to a public records request, do not send electronic mail to this entity. Instead, you may contact this office by phone. The information contained in this email may be privileged and confidential information intended only for the entity to which it is addressed. If you are not the intended recipient, you are hereby notified that any use, dissemination, distribution, copying or taking action in reliance upon this email is strictly prohibited. If you have received this email in error, please immediately notify the sender and delete this email entirely.

**From:** William Mills [mailto:[wjmills86@gmail.com](mailto:wjmills86@gmail.com)]  
**Sent:** Wednesday, July 14, 2021 1:25 PM  
**To:** Alice Lalonde <[levyrd@levycounty.org](mailto:levyrd@levycounty.org)>  
**Subject:** Road maintenance

Good afternoon,

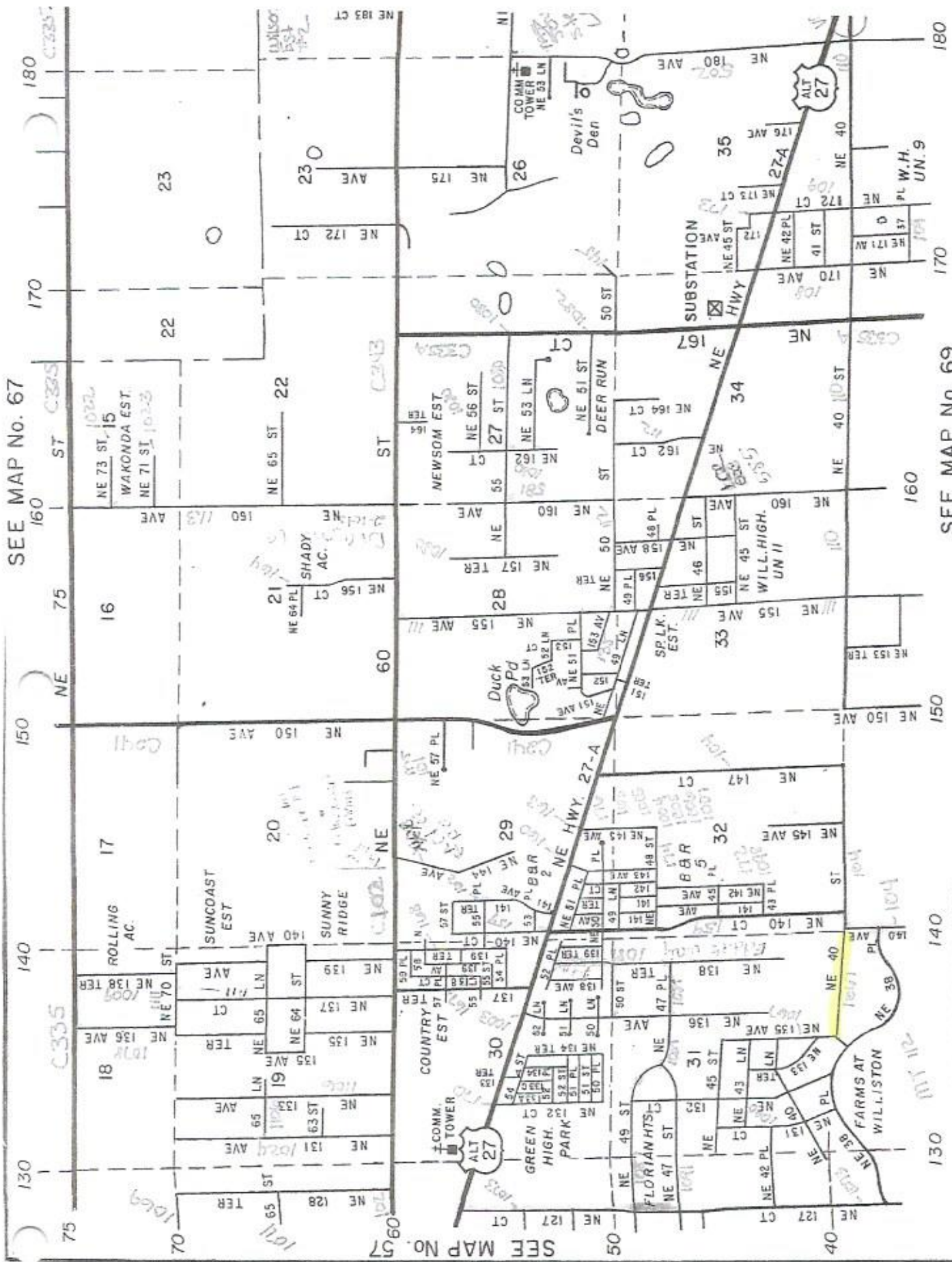
I live off NE 127th ct in Williston and there are a few bad washouts in this area from water flowing across the road. How do I go about requesting someone to fix this?

Additionally, which department determines which roads get paved in Levy county?

Thanks,

Jake

SEE MAP No. 67



SEE MAP No. 57

SEE MAP No. 69

DRAWN BY FERRELL CROFT - 1996, REVISED: 12/6/01