

SHEET INDEX:

- 1) TITLE PAGE
- 2) RECORD PLAT
- 3) RECORD PLAT

LEGAL DESCRIPTION - TRACT 1-PRIVATE ACCESS TRACT

A PORTION OF THAT PARCEL OF LAND LYING IN SECTION 17, TOWNSHIP 12 SOUTH, RANGE 19 EAST, LEVY COUNTY, FLORIDA, AND BEING MORE PARTICULARLY DESCRIBED AS FOLLOWS:

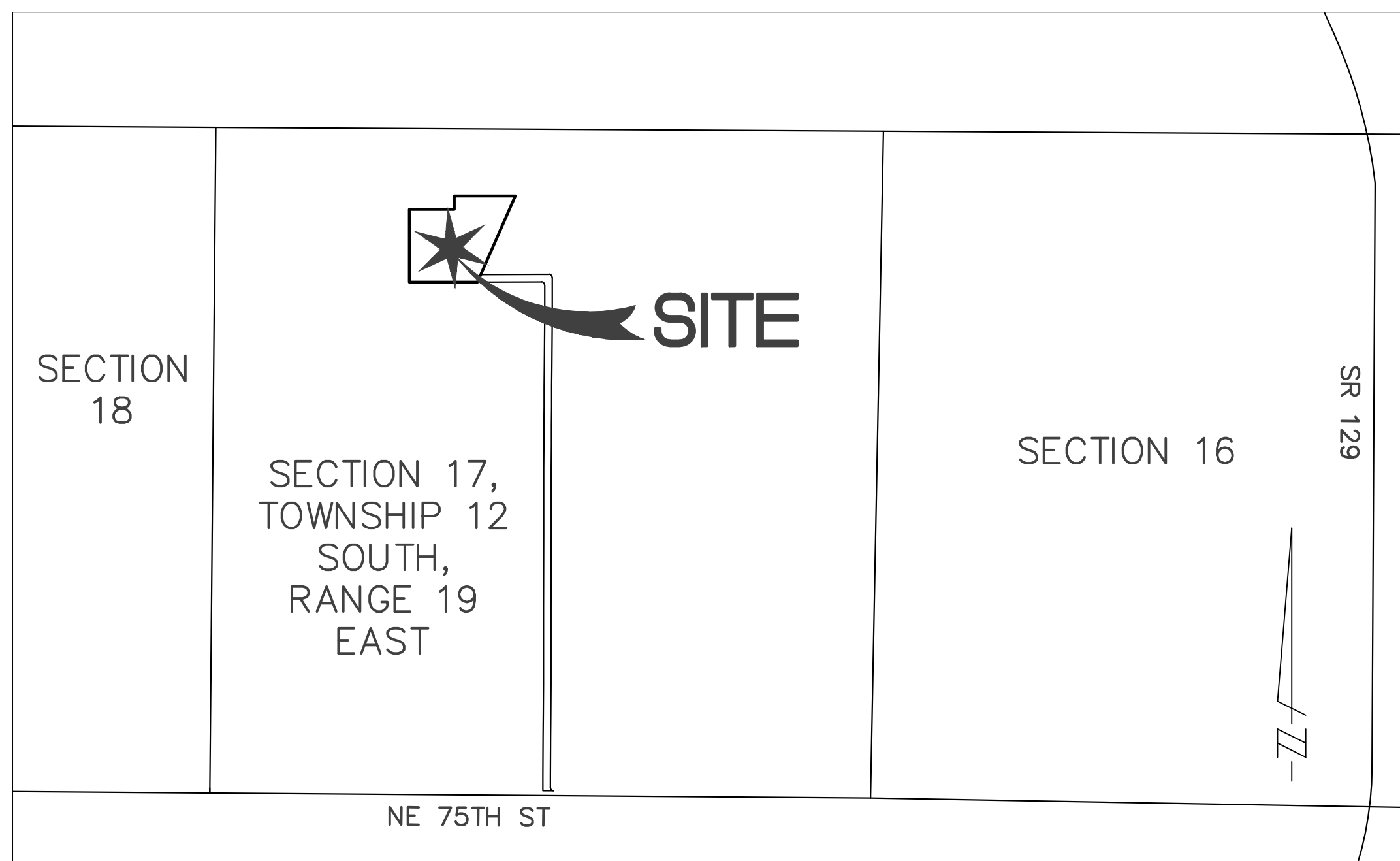
COMMENCE AT THE SOUTHWEST CORNER OF SECTION 17, TOWNSHIP 12 SOUTH, RANGE 19 EAST, LEVY COUNTY, FLORIDA; THENCE NORTH 00 DEGREES 32 MINUTES 11 SECONDS EAST, A DISTANCE OF 40.03 FEET TO A FOUND 4 INCH SQUARE CONCRETE MONUMENT STAMPED PRM 2001 PCP LYING ON THE NORTH RIGHT OF WAY LINE OF NE 75TH STREET (RIGHT OF WAY VARIES); THENCE ALONG SAID NORTH RIGHT OF WAY LINE, RUN SOUTH 89 DEGREES 42 MINUTES 16 SECONDS EAST, A DISTANCE OF 1303.25 FEET; THENCE CONTINUE ALONG SAID NORTH RIGHT OF WAY LINE SOUTH 00 DEGREES 13 MINUTES 56 SECONDS EAST, A DISTANCE OF 7.00 FEET; THENCE CONTINUE ALONG SAID NORTH RIGHT OF WAY LINE SOUTH 89 DEGREES 41 MINUTES 11 SECONDS EAST, A DISTANCE OF 1352.67 FEET TO THE POINT OF BEGINNING.

FROM SAID POINT OF BEGINNING, LEAVING SAID NORTH RIGHT OF WAY LINE, RUN NORTH 00 DEGREES 05 MINUTES 46 SECONDS EAST, A DISTANCE OF 122.27 FEET; THENCE NORTH 00 DEGREES 28 MINUTES 02 SECONDS EAST, A DISTANCE OF 307.10 FEET; THENCE NORTH 00 DEGREES 18 MINUTES 24 SECONDS EAST, A DISTANCE OF 174.79 FEET; THENCE NORTH 00 DEGREES 16 MINUTES 19 SECONDS EAST, A DISTANCE OF 243.03 FEET; THENCE NORTH 00 DEGREES 16 MINUTES 19 SECONDS EAST, A DISTANCE OF 243.02 FEET; THENCE NORTH 00 DEGREES 00 MINUTES 00 SECONDS EAST, A DISTANCE OF 351.28 FEET; THENCE NORTH 00 DEGREES 09 MINUTES 47 SECONDS EAST, A DISTANCE OF 602.92 FEET; THENCE NORTH 00 DEGREES 00 MINUTES 00 SECONDS EAST, A DISTANCE OF 317.87 FEET; THENCE NORTH 00 DEGREES 05 MINUTES 07 SECONDS EAST, A DISTANCE OF 208.23 FEET; THENCE NORTH 00 DEGREES 09 MINUTES 53 SECONDS EAST, A DISTANCE OF 191.52 FEET; THENCE NORTH 00 DEGREES 26 MINUTES 55 SECONDS EAST, A DISTANCE OF 144.67 FEET; THENCE NORTH 00 DEGREES 18 MINUTES 41 SECONDS EAST, A DISTANCE OF 157.69 FEET; THENCE NORTH 00 DEGREES 18 MINUTES 41 SECONDS EAST, A DISTANCE OF 157.69 FEET; THENCE NORTH 00 DEGREES 20 MINUTES 55 SECONDS EAST, A DISTANCE OF 152.41 FEET; THENCE NORTH 00 DEGREES 21 MINUTES 28 SECONDS EAST, A DISTANCE OF 407.18 FEET; THENCE NORTH 00 DEGREES 10 MINUTES 46 SECONDS EAST, A DISTANCE OF 249.08 FEET TO A POINT ON A CURVE TO THE LEFT HAVING A RADIUS OF 25.00 FEET; THENCE CONTINUE ALONG SAID CURVE CONCAVE TO THE SOUTHWEST, RUN NORTHWESTERLY, AN ARC DISTANCE OF 39.35 FEET THROUGH A CENTRAL ANGLE OF 90 DEGREES 10 MINUTES 46 SECONDS (CHORD OF SAID ARC BEARING NORTH 44 DEGREES 54 MINUTES 37 SECONDS WEST, A CHORD DISTANCE OF 35.41 FEET); THENCE NORTH 00 DEGREES 00 MINUTES 00 SECONDS WEST, A DISTANCE OF 20.19 FEET; THENCE SOUTH 89 DEGREES 54 MINUTES 34 SECONDS WEST, A DISTANCE OF 491.88 FEET; THENCE NORTH 23 DEGREES 45 MINUTES 52 SECONDS EAST, A DISTANCE OF 65.60 FEET; THENCE NORTH 89 DEGREES 54 MINUTES 34 SECONDS EAST, A DISTANCE OF 465.40 FEET; THENCE NORTH 90 DEGREES 00 MINUTES 00 SECONDS EAST, A DISTANCE OF 80.43 FEET TO A POINT ON A CURVE TO THE RIGHT HAVING A RADIUS OF 25.00 FEET; THENCE CONTINUE ALONG SAID CURVE CONCAVE TO THE SOUTHWEST, RUN SOUTHEASTERLY, AN ARC DISTANCE OF 39.35 FEET THROUGH A CENTRAL ANGLE OF 90 DEGREES 10 MINUTES 46 SECONDS (CHORD OF SAID ARC BEARING SOUTH 44 DEGREES 54 MINUTES 37 SECONDS EAST, A CHORD DISTANCE OF 35.41 FEET); THENCE SOUTH 00 DEGREES 10 MINUTES 46 SECONDS WEST, A DISTANCE OF 309.37 FEET; THENCE SOUTH 00 DEGREES 21 MINUTES 28 SECONDS WEST, A DISTANCE OF 407.28 FEET; THENCE SOUTH 00 DEGREES 20 MINUTES 55 SECONDS WEST, A DISTANCE OF 152.40 FEET; THENCE SOUTH 00 DEGREES 18 MINUTES 41 SECONDS WEST, A DISTANCE OF 157.65 FEET; THENCE SOUTH 00 DEGREES 18 MINUTES 41 SECONDS WEST, A DISTANCE OF 157.76 FEET; THENCE SOUTH 00 DEGREES 26 MINUTES 55 SECONDS WEST, A DISTANCE OF 144.60 FEET; THENCE SOUTH 00 DEGREES 09 MINUTES 53 SECONDS WEST, A DISTANCE OF 191.33 FEET; THENCE SOUTH 00 DEGREES 05 MINUTES 07 SECONDS WEST, A DISTANCE OF 208.14 FEET; THENCE SOUTH 00 DEGREES 00 MINUTES 00 SECONDS EAST, A DISTANCE OF 317.91 FEET; THENCE SOUTH 00 DEGREES 09 MINUTES 47 SECONDS WEST, A DISTANCE OF 602.92 FEET; THENCE SOUTH 00 DEGREES 00 MINUTES 00 SECONDS EAST, A DISTANCE OF 351.34 FEET; THENCE SOUTH 00 DEGREES 16 MINUTES 19 SECONDS WEST, A DISTANCE OF 243.17 FEET; THENCE SOUTH 00 DEGREES 16 MINUTES 19 SECONDS WEST, A DISTANCE OF 243.03 FEET; THENCE SOUTH 00 DEGREES 18 MINUTES 24 SECONDS WEST, A DISTANCE OF 174.91 FEET; THENCE SOUTH 00 DEGREES 28 MINUTES 02 SECONDS WEST, A DISTANCE OF 306.99 FEET; THENCE SOUTH 00 DEGREES 05 MINUTES 46 SECONDS WEST, A DISTANCE OF 97.40 FEET TO A POINT ON A CURVE TO THE LEFT HAVING A RADIUS OF 25.00 FEET; THENCE CONTINUE ALONG SAID CURVE CONCAVE TO THE NORTHEAST, RUN SOUTHEASTERLY, AN ARC DISTANCE OF 39.17 FEET THROUGH A CENTRAL ANGLE OF 89 DEGREES 46 MINUTES 57 SECONDS (CHORD OF SAID ARC BEARING SOUTH 44 DEGREES 47 MINUTES 42 SECONDS EAST, A CHORD DISTANCE OF 35.29 FEET) TO A POINT ON SAID NORTH RIGHT OF WAY LINE; THENCE ALONG SAID NORTH RIGHT OF WAY LINE, RUN NORTH 89 DEGREES 41 MINUTES 11 SECONDS WEST, A DISTANCE OF 84.91 FEET TO THE POINT OF BEGINNING, CONTAINING 6.394 ACRES (278,534 SQUARE FEET), MORE OR LESS.

SUBDIVISION OF
WHISTLING DUCK
 A 2 LOT PLAT OF A PORTION OF O.R. BOOK 200, PAGE 443
 LYING IN SECTION 17,
 TOWNSHIP 12 SOUTH, RANGE 19 EAST
 LEVY COUNTY, FLORIDA
 FEBRUARY, 2024

VICINITY MAP

1"=1000'



LEGAL DESCRIPTION - TRACT 2

A PORTION OF THAT PARCEL OF LAND LYING IN SECTION 17, TOWNSHIP 12 SOUTH, RANGE 19 EAST, LEVY COUNTY, FLORIDA, AND BEING MORE PARTICULARLY DESCRIBED AS FOLLOWS:

COMMENCE AT THE SOUTHWEST CORNER OF SECTION 17, TOWNSHIP 12 SOUTH, RANGE 19 EAST, LEVY COUNTY, FLORIDA; THENCE NORTH 00 DEGREES 32 MINUTES 11 SECONDS EAST, A DISTANCE OF 40.03 FEET TO A FOUND 4 INCH SQUARE CONCRETE MONUMENT STAMPED PRM 2001 PCP LYING ON THE NORTH RIGHT OF WAY LINE OF NE 75TH STREET (RIGHT OF WAY VARIES); THENCE ALONG SAID NORTH RIGHT OF WAY LINE, RUN SOUTH 89 DEGREES 42 MINUTES 16 SECONDS EAST, A DISTANCE OF 1303.25 FEET; THENCE CONTINUE ALONG SAID NORTH RIGHT OF WAY LINE SOUTH 00 DEGREES 13 MINUTES 56 SECONDS EAST, A DISTANCE OF 7.00 FEET; THENCE CONTINUE ALONG SAID NORTH RIGHT OF WAY LINE SOUTH 89 DEGREES 41 MINUTES 11 SECONDS EAST, A DISTANCE OF 1352.67 FEET; THENCE LEAVING SAID NORTH RIGHT OF WAY LINE, RUN NORTH 00 DEGREES 05 MINUTES 46 SECONDS EAST, A DISTANCE OF 122.27 FEET; THENCE NORTH 00 DEGREES 28 MINUTES 02 SECONDS EAST, A DISTANCE OF 307.10 FEET; THENCE NORTH 00 DEGREES 18 MINUTES 24 SECONDS EAST, A DISTANCE OF 174.79 FEET; THENCE NORTH 00 DEGREES 16 MINUTES 19 SECONDS EAST, A DISTANCE OF 243.03 FEET; THENCE NORTH 00 DEGREES 16 MINUTES 19 SECONDS EAST, A DISTANCE OF 243.02 FEET; THENCE NORTH 00 DEGREES 00 MINUTES 00 SECONDS EAST, A DISTANCE OF 351.28 FEET; THENCE NORTH 00 DEGREES 09 MINUTES 47 SECONDS EAST, A DISTANCE OF 602.92 FEET; THENCE NORTH 00 DEGREES 00 MINUTES 00 SECONDS EAST, A DISTANCE OF 317.87 FEET; THENCE NORTH 00 DEGREES 05 MINUTES 07 SECONDS EAST, A DISTANCE OF 208.23 FEET; THENCE NORTH 00 DEGREES 09 MINUTES 53 SECONDS EAST, A DISTANCE OF 191.52 FEET; THENCE NORTH 00 DEGREES 26 MINUTES 55 SECONDS EAST, A DISTANCE OF 144.67 FEET; THENCE NORTH 00 DEGREES 18 MINUTES 41 SECONDS EAST, A DISTANCE OF 157.69 FEET; THENCE NORTH 00 DEGREES 20 MINUTES 55 SECONDS EAST, A DISTANCE OF 144.60 FEET; THENCE NORTH 00 DEGREES 21 MINUTES 28 SECONDS EAST, A DISTANCE OF 407.18 FEET; THENCE NORTH 00 DEGREES 10 MINUTES 46 SECONDS EAST, A DISTANCE OF 249.08 FEET; THENCE NORTH 00 DEGREES 00 MINUTES 00 SECONDS WEST, A DISTANCE OF 20.19 FEET; THENCE SOUTH 89 DEGREES 54 MINUTES 34 SECONDS WEST, A DISTANCE OF 491.88 FEET TO THE POINT OF BEGINNING.

FROM SAID POINT OF BEGINNING, RUN NORTH 90 DEGREES 00 MINUTES 00 SECONDS WEST, A DISTANCE OF 542.29 FEET; THENCE NORTH 00 DEGREES 00 MINUTES 00 SECONDS EAST, A DISTANCE OF 580.00 FEET; THENCE NORTH 90 DEGREES 00 MINUTES 00 SECONDS EAST, A DISTANCE OF 358.00 FEET; THENCE NORTH 00 DEGREES 00 MINUTES 00 SECONDS EAST, A DISTANCE OF 107.00 FEET; THENCE NORTH 90 DEGREES 00 MINUTES 00 SECONDS EAST, A DISTANCE OF 486.71 FEET; THENCE SOUTH 23 DEGREES 45 MINUTES 52 SECONDS WEST, A DISTANCE OF 750.62 FEET TO THE POINT OF BEGINNING, CONTAINING 10.058 ACRES (438,129 SQ. FT.) OF LAND, MORE OR LESS.

SURVEYOR'S CERTIFICATE:

I, ZACHARY C. DAVIES, HEREBY CERTIFY THAT THE PLAT SHOWN HEREON IS A TRUE AND CORRECT REPRESENTATION OF THE LAND SURVEYED; THAT THE SURVEY WAS PREPARED UNDER MY RESPONSIBLE DIRECTION AND SUPERVISION; THAT THE PLAT COMPLIES WITH ALL OF THE PROVISIONS OF THE FLORIDA PLAT ACT; SECTIONS 177.011-177.151, FLORIDA STATUTES, AS AMENDED FROM TIME TO TIME; THAT ALL PERMANENT REFERENCE MONUMENTS AND PERMANENT CONTROL POINTS HAVE BEEN PLACED AS REQUIRED BY CHAPTER 177 AND THE LAND DEVELOPMENT CODE OF LEVY COUNTY, FLORIDA, AS AMENDED FROM TIME TO TIME; AND THAT SAID LAND HAS BEEN SUBDIVIDED AS SHOWN HEREON.

SIGNED THIS _____ DAY OF _____, 2024.

ZACHARY C. DAVIES, PROFESSIONAL SURVEYOR AND MAPPER NUMBER 7370
SAM SURVEYING AND MAPPING, LLC SURVEYING AND MAPPING BUSINESS NUMBER 7908
932 N FERDON BLVD, CRESTVIEW, FL 32536

LAND SURVEYOR:
ZACHARY C. DAVIES P.S.M NO. 7370
SAM SURVEYING AND MAPPING, LLC
L.B. 7908
932 N FERDON BLVD
CRESTVIEW, FL 32536
(850)678-9932

CIVIL ENGINEER:
TETRA TECH, INC
759 SOUTH FEDERAL HIGHWAY
SUITE 314, STUART FL, 34994
(772)781-3400

OWNER/DEVELOPER:
WHITEHURST CATTLE CO.

DEDICATION:

WE, _____ AND _____ AUTHORIZED AGENTS FOR _____, ARE THE OWNERS OF THE LANDS COMPRISED WITHIN "WHISTLING DUCK" AS DESCRIBED HEREIN, AND HEREBY CONSENT TO THE SUBDIVISION THEREOF AS SHOWN. WE HEREBY DEDICATE TO THE PUBLIC, FOREVER: ALL PUBLIC UTILITY EASEMENTS AND

NOTARY PUBLIC:

I HEREBY CERTIFY THAT ON THIS DAY PERSONALLY APPEARED BEFORE ME, _____ AND _____ WHO ARE DULY SWORN AND WHO FURNISHED A FLORIDA DRIVERS LICENSE AS IDENTIFICATION AND WHO EXECUTED THE ABOVE INSTRUMENT AND ACKNOWLEDGED BEFORE ME THAT THEY EXECUTED SAID INSTRUMENT FOR THE USE AND PURPOSE HEREIN EXPRESSED, AND DID TAKE AN OATH.

GIVEN UNDER MY HAND AND OFFICIAL SEAL THIS _____ DAY OF _____, 2024.

COUNTY OF: _____

STATE OF: _____

PRINTED: _____

SIGNATURE
COMMISSION NO. _____
MY COMMISSION EXPIRES _____

COUNTY CERTIFICATES:

WE, THE UNDERSIGNED DO HEREBY CERTIFY THAT LOT SIZES SHOWN IN THIS SUBDIVISION COMPLY WITH REQUIREMENTS OF CHAPTER 381 F.S. AND CHAPTER 62-6, F.A.C., FOR SURE OF ON-SITE SEWAGE DISPOSAL SYSTEMS AND INDIVIDUAL WATER SUPPLY SYSTEMS. SYSTEMS SIZE DETERMINATION WILL BE MADE ON AN INDIVIDUAL LOT BASIS.

DATE: _____
LEVY COUNTY HEALTH DEPARTMENT

ROAD REQUIREMENTS:

DATE: _____
ADMINISTRATIVE COORDINATOR - LEVY COUNTY ROAD DEPARTMENT

PROPERTY APPRAISER:

DATE: _____
LEVY COUNTY PROPERTY APPRAISER

FORM AND LEGALITY:

DATE: _____
LEVY COUNTY ATTORNEY

COMMISSION:

DATE: _____
CHAIRMAN - BOARD OF COUNTY COMMISSIONERS

REVIEW BY SURVEYOR & MAPPER, THIS IS TO CERTIFY THAT I HAVE REVIEWED THE PLAT FOR CONFORMITY TO PART 1, CHAPTER 177, FLORIDA STATUTES, BUT HAVE NOT VERIFIED SURVEY DATA.

DATE: _____
DONALD A. CARSWELL
FLORIDA CERTIFICATION NO. 6071

CERTIFICATE OF COUNTY CLERK:

THIS IS TO CERTIFY THAT THIS PLAT HAS BEEN FILED FOR RECORD IN PLAT BOOK _____ PAGE _____ OF THE PUBLIC RECORDS OF LEVY COUNTY, FLORIDA, THIS _____ DAY OF _____, 2024.

CLERK OF THE CIRCUIT COURT _____ DEPUTY CLERK _____



SAM SURVEYING & MAPPING, LLC
932 N FERDON BLVD, CRESTVIEW, FL 32536
LBP7908 P-850.678.9932 F-844.274.4099

WHISTLING DUCK

RESTRICTIVE COVENANTS _____ PLAT BOOK _____ PAGE _____
OFFICIAL RECORDS BOOK _____ PAGE _____

SUBDIVISION OF
WHISTLING DUCK
 A 2 LOT PLAT OF A PORTION OF O.R. BOOK 200, PAGE 443
 LYING IN SECTION 17,
 TOWNSHIP 12 SOUTH, RANGE 19 EAST
 LEVY COUNTY, FLORIDA
FEBRUARY, 2024

LAND SURVEYOR:
 ZACHARY C. DAVES P.S.M. NO. 7370
 SAM SURVEYING AND MAPPING, LLC
 L.B. 7908
 932 N FERDON BLVD
 CRESTVIEW, FL 32536
 (850)678-9932

CIVIL ENGINEER:
 TETRATECH, INC
 759 SOUTH FEDERAL HIGHWAY
 SUITE 314, STUART FL, 34994
 (772)781-3400

OWNER/DEVELOPER:
 ORIGIS ENERGY

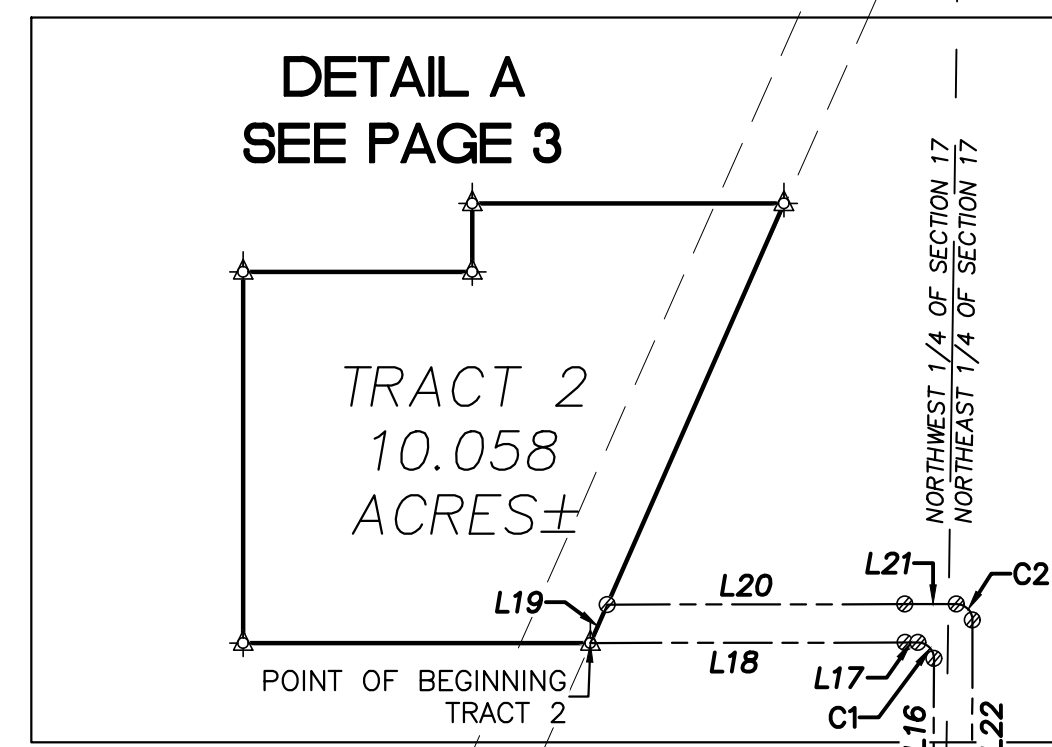
LEGEND AND ABBREVIATIONS:

- CONCRETE MONUMENT FOUND
- ▲ SET 5/8" IRON ROD AND ALUMINUM CAP
- ⊗ STAMPED "SAM LLC LB 7908 PRM"
- ⊙ SET 5/8" IRON ROD AND CAP
- ⊗ STAMPED "SAM LLC LB 7908"
- IRON PIPE FOUND
- N/F NOW OR FORMERLY
- (F) VALUE DERIVED FROM FIELD SURVEY
- (M) VALUE DERIVED FROM FLORIDA DEPARTMENT OF TRANSPORTATION RIGHT OF WAY MAP SECTION NUMBER 3462-150

NORTHWEST CORNER OF SECTION 17,
 TOWNSHIP 12 SOUTH, RANGE 19 EAST
 FOUND 6"x6" CONCRETE MONUMENT

N/F
 WHITEHURST CATTLE COMPANY
 PARCEL ID: 0467600000
 (NOT A PART OF THIS PLAT)

NORTHEAST CORNER OF SECTION 17,
 TOWNSHIP 12 SOUTH, RANGE 19 EAST
 SET 5/8" IRON ROD AND CAP
 "SAM LLC LB 7908"



N/F
 WHITEHURST CATTLE COMPANY
 PARCEL ID: 0468700000
 (NOT A PART OF THIS PLAT)

N/F
 WHITEHURST CATTLE COMPANY
 PARCEL ID: 0468700000
 (NOT A PART OF THIS PLAT)

SECTION 17,
 TOWNSHIP 12 SOUTH,
 RANGE 19 EAST

N/F
 WHITEHURST CATTLE COMPANY
 PARCEL ID: 0468800000
 (NOT A PART OF THIS PLAT)

TRACT 1—PRIVATE ACCESS TRACT
 6.394 ACRES±

NANCY W. ETHERIDGE,
 BETTY ANN W. ARNOLD,
 BETH HUBBARD, AND
 V E WHITEHURST III
 PARCEL ID: 0468700300
 (NOT A PART OF THIS PLAT)

O.R. 59, PAGE 242
 100' TRANSMISSION
 LINE EASEMENT

EXCEPTION #9
 O.R. 68, PAGE 592
 O.R. 733, PAGE 491

FOUND 4"x4" CONCRETE MONUMENT
 "PRM 2001 PCP"
 POINT OF COMMENCEMENT
 FOUND 1/2" IRON PIPE
 SOUTHWEST CORNER OF SECTION 17,
 TOWNSHIP 12 SOUTH, RANGE 19 EAST

PARCEL ID: 0468700200
 (NOT A PART OF THIS PLAT)

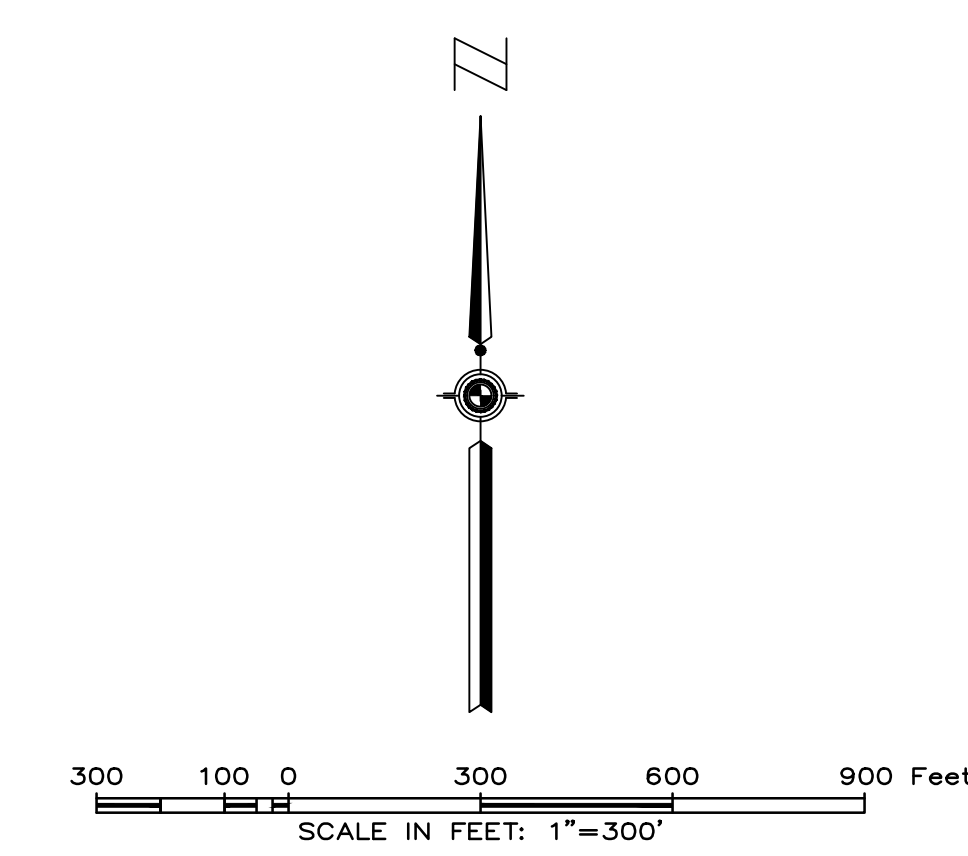
SOUTHEAST CORNER OF SECTION 17,
 TOWNSHIP 12 SOUTH, RANGE 19 EAST
 FOUND RAILROAD SPIKE


NE 75TH STREET (F)
 RIGHT OF WAY VARIES (M)

LINE TABLE		
NUMBER	DIRECTION	LENGTH
L1	N00°05'46"E	122.27'
L2	N00°28'02"E	307.10'
L3	N00°18'24"E	174.79'
L4	N00°16'19"E	243.03'
L5	N00°16'19"E	243.02'
L6	N00°00'00"E	351.28'
L7	N00°09'47"E	602.92'
L8	N00°00'00"E	317.87'
L9	N00°05'07"E	208.23'
L10	N00°09'53"E	191.52'
L11	N00°26'55"E	144.67'
L12	N00°18'41"E	157.69'
L13	N00°18'41"E	157.69'
L14	N00°20'55"E	152.41'
L15	N00°21'28"E	407.18'
L16	N00°10'46"E	249.08'
L17	N90°00'00"W	20.19'
L18	S89°54'34"W	491.88'
L19	N23°45'32"E	65.60'

LINE TABLE		
NUMBER	DIRECTION	LENGTH
L20	N89°54'34"E	465.40'
L21	N90°00'00"E	80.43'
L22	S00°10'46"W	309.37'
L23	S00°21'28"W	407.28'
L24	S00°20'55"W	152.40'
L25	S00°18'41"W	157.65'
L26	S00°18'41"W	157.76'
L27	S00°26'55"W	144.60'
L28	S00°09'53"W	191.33'
L29	S00°05'07"W	208.14'
L30	S00°00'00"E	317.91'
L31	S00°09'47"W	602.92'
L32	S00°00'00"E	351.34'
L33	S00°16'19"W	243.17'
L34	S00°16'19"W	243.03'
L35	S00°18'24"W	174.91'
L36	S00°28'02"W	306.99'
L37	S00°05'46"W	97.40'
L38	N89°41'11"W	84.91'

CURVE TABLE					
CURVE NO.	DELTA	RADIUS	LENGTH	CHORD BEARING	CHORD LENGTH
C1	090°10'46"	25.00'	39.35'	N44°54'37"W	35.41'
C2	090°10'46"	25.00'	39.35'	S44°54'37"E	35.41'
C3	089°46'57"	25.00'	39.17'	S44°47'42"E	35.29'





SAM SURVEYING & MAPPING, LLC
 932 N FERDON BLVD, CRESTVIEW, FL 32536
 LB#7908 P-950,678,9932 F-944,274,4099

WHISTLING DUCK

RESTRICTIVE COVENANTS OFFICIAL RECORDS BOOK . . . PAGE	PLAT BOOK . . . PAGE
---	----------------------

SUBDIVISION OF
WHISTLING DUCK
 A 2 LOT PLAT OF A PORTION OF O.R. BOOK 200, PAGE 443
 LYING IN SECTION 17,
 TOWNSHIP 12 SOUTH, RANGE 19 EAST
 LEVY COUNTY, FLORIDA
 FEBRUARY, 2024

LINE TABLE		
NUMBER	DIRECTION	LENGTH
L17	N90°00'00"W	20.19'
L18	S89°54'34"W	491.88'
L19	N23°45'32"E	65.60'
L20	N89°54'34"E	465.40'
L21	N90°00'00"E	80.43'

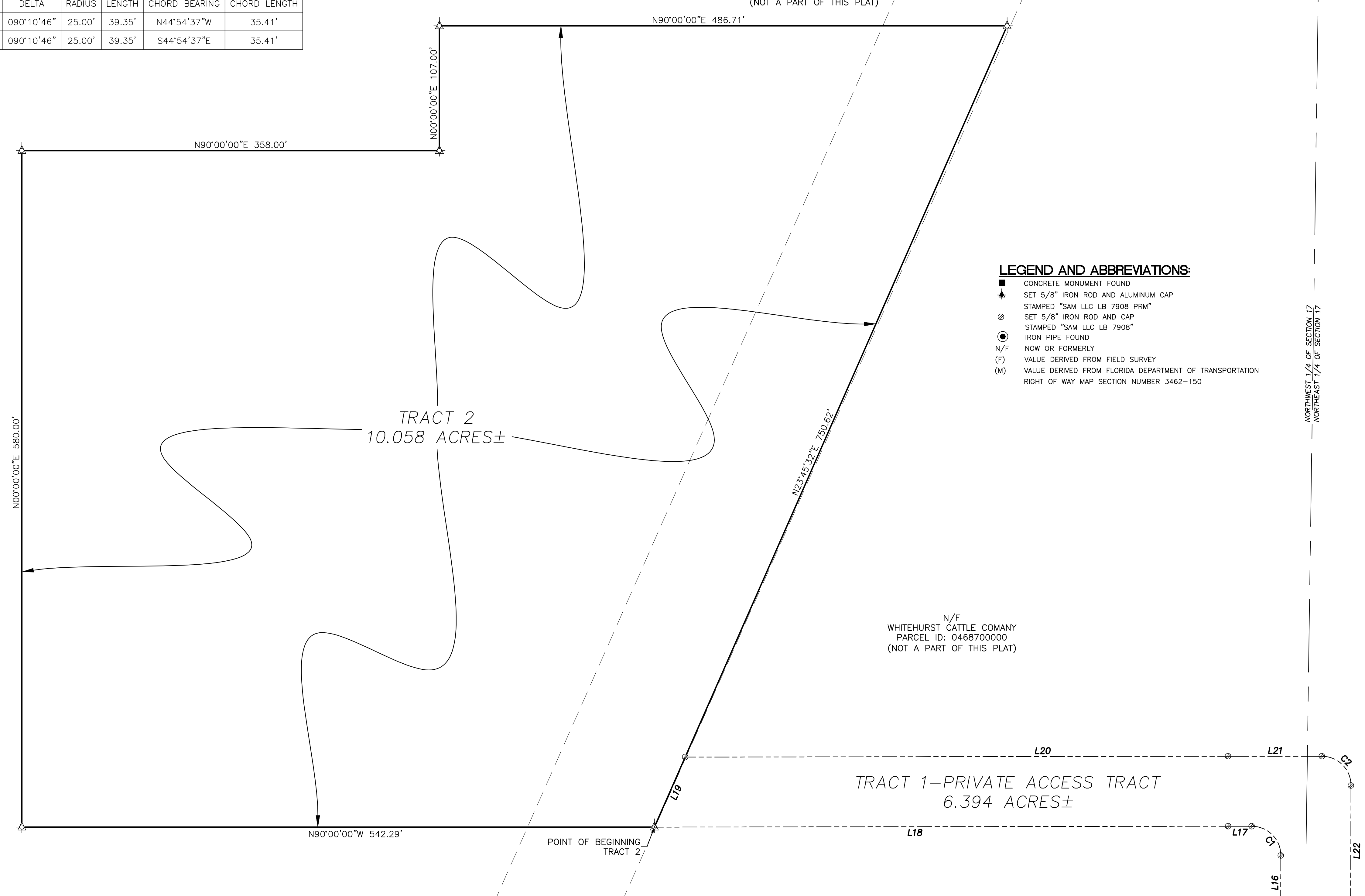
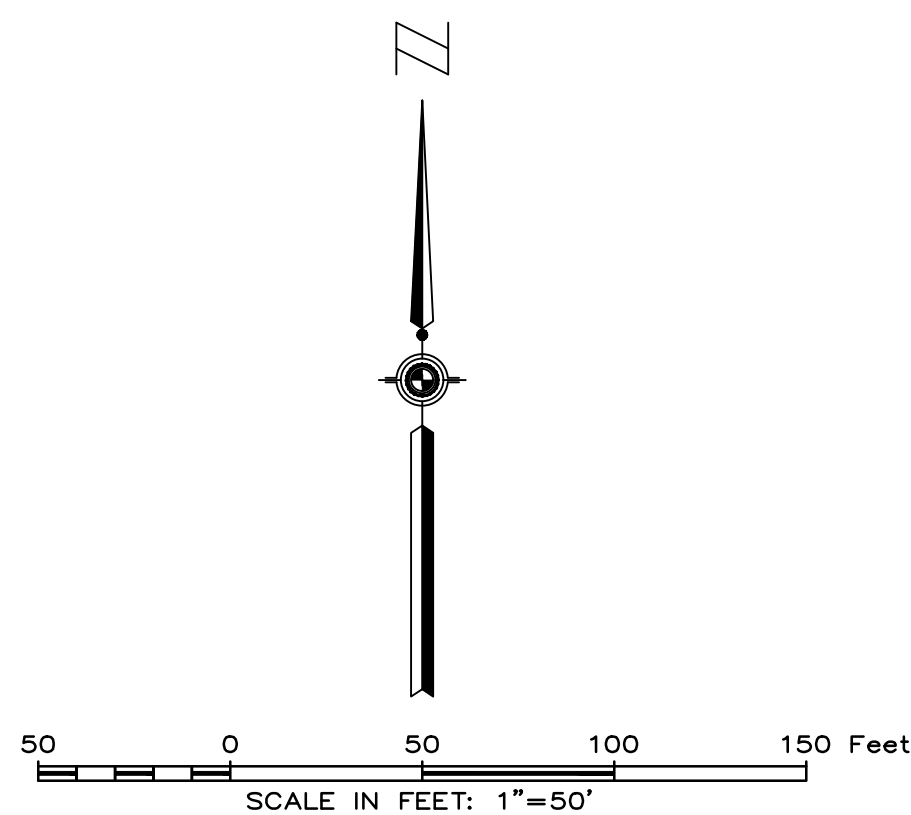
CURVE TABLE					
CURVE NO.	DELTA	RADIUS	LENGTH	CHORD BEARING	CHORD LENGTH
C1	090°10'46"	25.00'	39.35'	N44°54'37"W	35.41'
C2	090°10'46"	25.00'	39.35'	S44°54'37"E	35.41'

N/F
 WHITEHURST CATTLE COMPANY
 PARCEL ID: 0468700000
 (NOT A PART OF THIS PLAT)

N/F
 WHITEHURST CATTLE COMPANY
 PARCEL ID: 0468700000
 (NOT A PART OF THIS PLAT)

O.R. 59, PAGE 242
 100' TRANSMISSION
 LINE EASEMENT

- LEGEND AND ABBREVIATIONS:**
- CONCRETE MONUMENT FOUND
 - ⊕ SET 5/8" IRON ROD AND ALUMINUM CAP
 - ⊙ STAMPED "SAM LLC LB 7908 PRM"
 - ⊗ SET 5/8" IRON ROD AND CAP
 - ⊙ STAMPED "SAM LLC LB 7908"
 - ⊙ IRON PIPE FOUND
 - N/F NOW OR FORMERLY
 - (F) VALUE DERIVED FROM FIELD SURVEY
 - (M) VALUE DERIVED FROM FLORIDA DEPARTMENT OF TRANSPORTATION RIGHT OF WAY MAP SECTION NUMBER 3462-150



NORTHWEST 1/4 OF SECTION 17
 NORTHEAST 1/4 OF SECTION 17


LAND SURVEYOR:
 ZACHARY C. DAVIES P.S.M. NO. 7370
 SAM SURVEYING AND MAPPING, LLC
 L.B. 7908
 932 N FERDON BLVD
 CRESTVIEW, FL 32536
 (850)678-9932

CIVIL ENGINEER:
 TETRATECH, INC
 759 SOUTH FEDERAL HIGHWAY
 SUITE 314, STUART FL, 34994
 (772)781-3400

OWNER / DEVELOPER:
 ORIGIS ENERGY

N/F
 WHITEHURST CATTLE COMPANY
 PARCEL ID: 0468700000
 (NOT A PART OF THIS PLAT)

N/F
 WHITEHURST CATTLE COMPANY
 PARCEL ID: 0468700000
 (NOT A PART OF THIS PLAT)



SAM SURVEYING & MAPPING, LLC
 932 N FERDON BLVD, CRESTVIEW, FL 32536
 LB#7908 P-850.678.9932 F-844.274.4089

WHISTLING DUCK

RESTRICTIVE COVENANTS OFFICIAL RECORDS BOOK . PAGE	PLAT BOOK . PAGE
---	------------------