

# Levy County Commission and School Board 2020 Redistricting

John Gilreath, GISP

[Jgilreath@drmp.com](mailto:Jgilreath@drmp.com)

October 5, 2021



# Levy County Commission and School Board Redistricting

- Usually performed after decennial U.S. Census has been completed; last performed in 2010
- Data in between supplied by the American Community Survey estimates
- 2020 data released in summary for redistricting in August; full data release early October
- Summary data includes total population and demographics

# 2020 U.S. Census Data

- Snapshot of our nation and local communities
- Available in multitude of formats for statistical and spatial analysis
- **Blocks**- Smallest area , typically a city block or portions of a subdivision
- **Block Groups**- larger areas such as immediate city neighborhoods or rural subdivisions
- **Census Tracts**- larger swaths of a city or county, larger neighborhood areas in cities

# Levy County Commission and School Board Redistricting

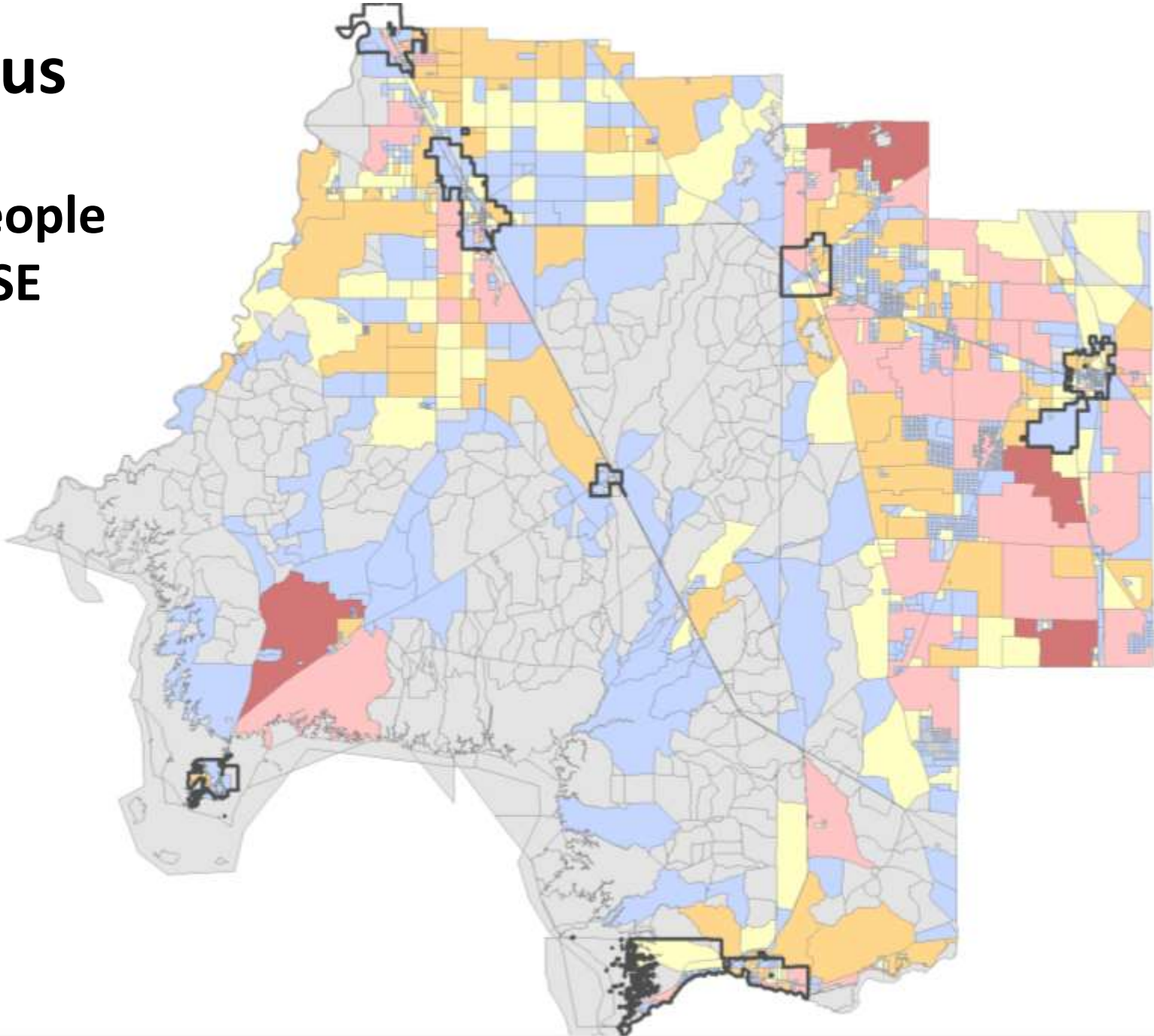
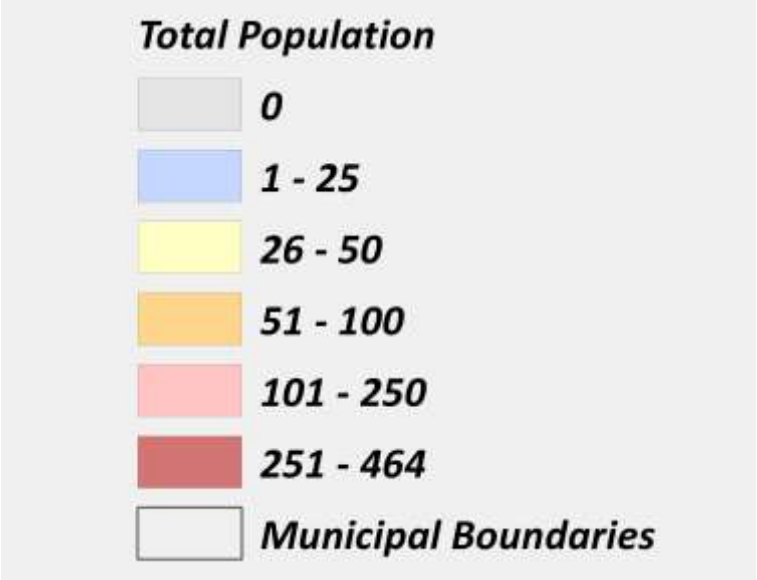
- Coordination with County, the School Board, and the Office of Elections
- **Overall goals for redistricting include:**
  - Review and analyze the changes in population in the 2020 Census data
  - Consider citizen and community official's comments and input
  - Create compact, contiguous, and community districts

# **Specific goals for redistricting include:**

- **Review and analyze the changes in population in the 2020 Census data**
  - Block, block group, and census tract level
- **Consider citizen and community official's comments and input**
  - 5 public workshops throughout the County
  - School Board and County Commission presentations
- **Create compact, contiguous, and community districts**
  - Provide at least four (4) options to the Community
  - Combine comments for final version for recommendation

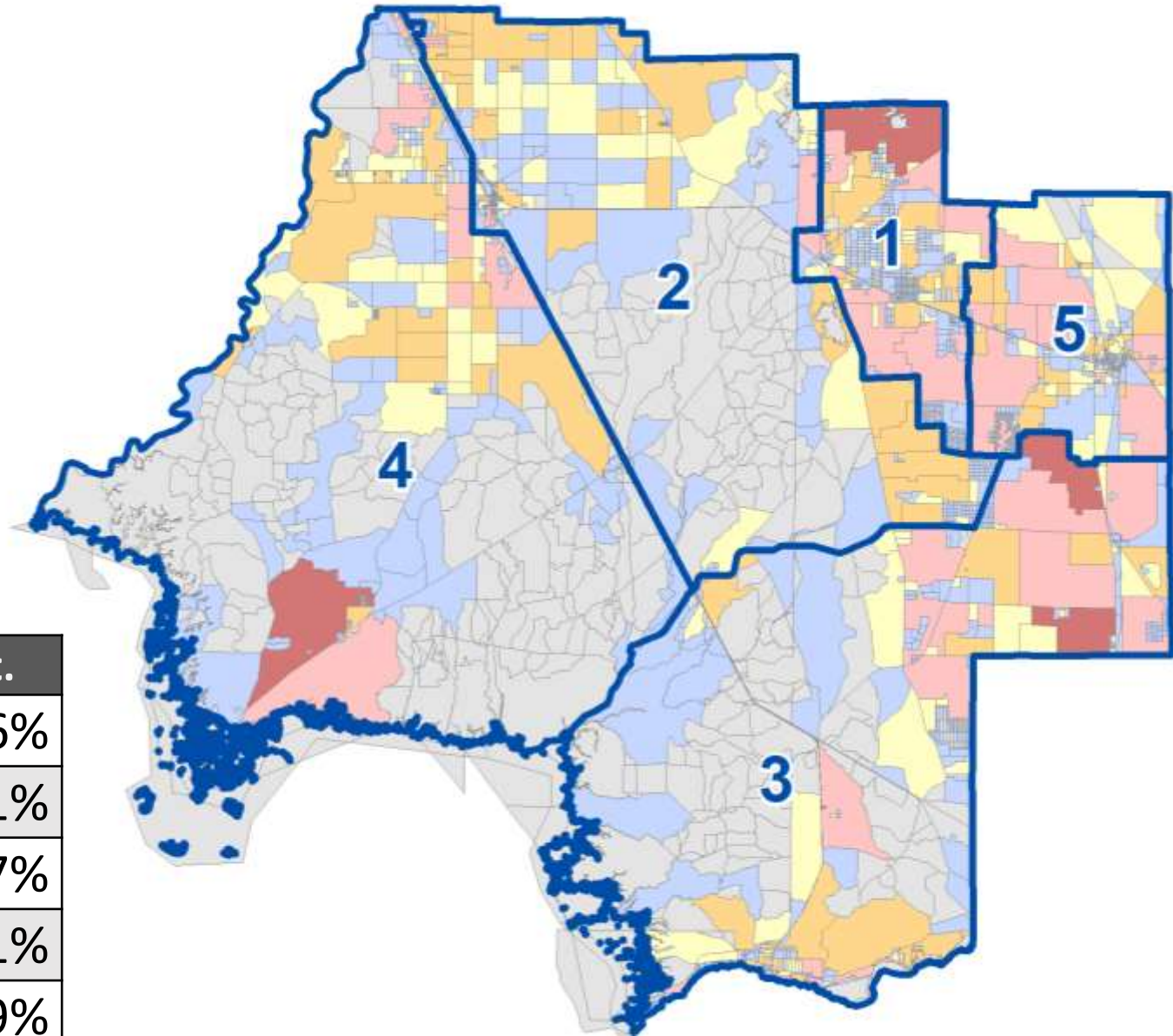
# Levy County 2020 Census

- Increase of about 2,000 people
- Largest gains in Williston, SE Levy County, and south of Chiefland



# Levy County 2020 Census Block Data

- Increase in County Districts 1,3 and 5



District	2010 Blocks	2020 Blocks	Change	Pct.
1	8560	9101	541	6%
2	7989	8104	115	1%
3	8097	8678	581	7%
4	8066	8218	152	1%
5	8089	8814	725	9%

# Additional Data

- Current Districts
- Road Centerlines
- Parcels
- Commissioner Addresses
- Parcel Data
- Municipal Boundaries

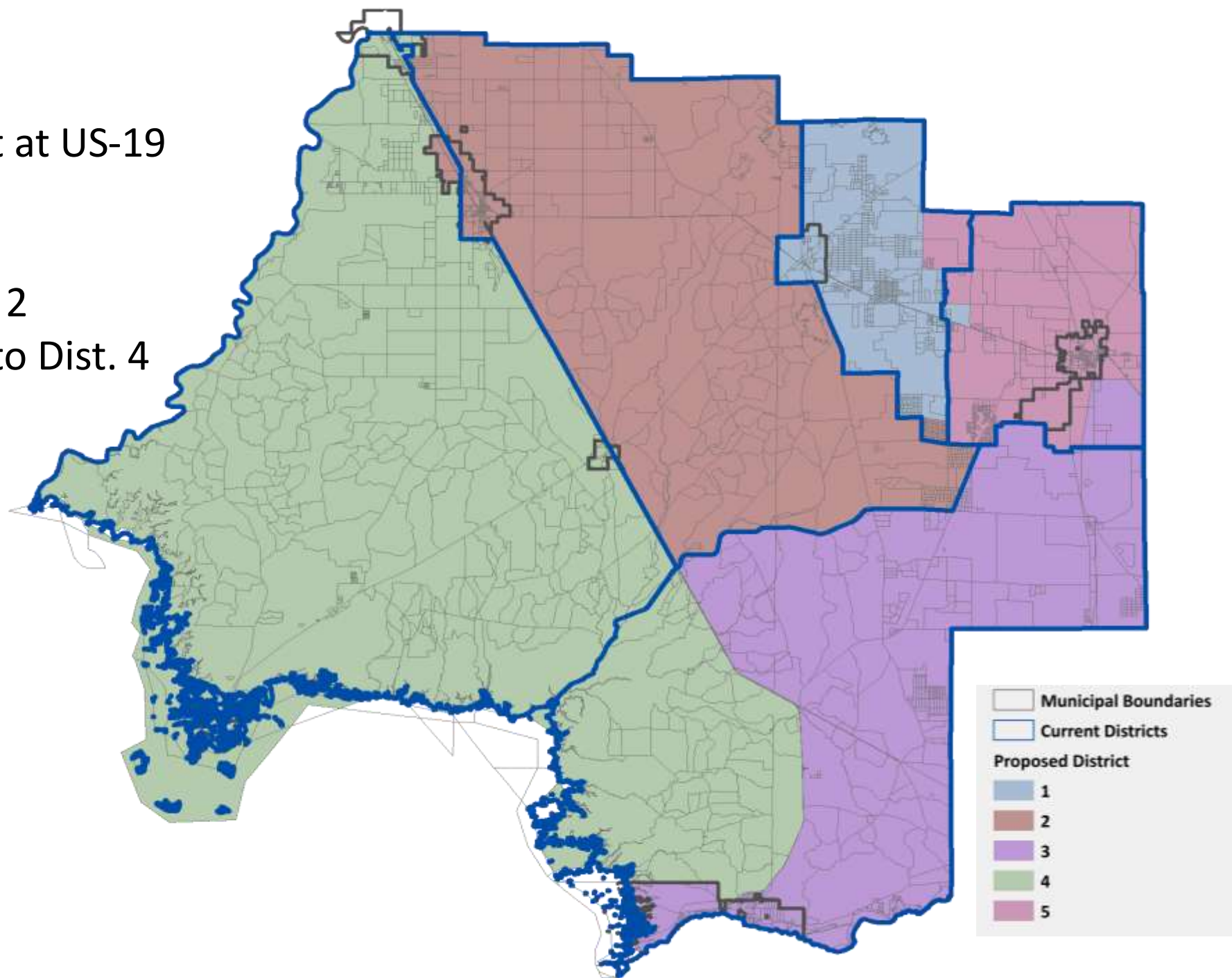




# Option A

- Districts 4 and 3 are split at US-19
- Districts 1 and 5 shift
- District 3 expands into 5
- City of Chiefland to Dist. 2
- City of Fanning Springs to Dist. 4

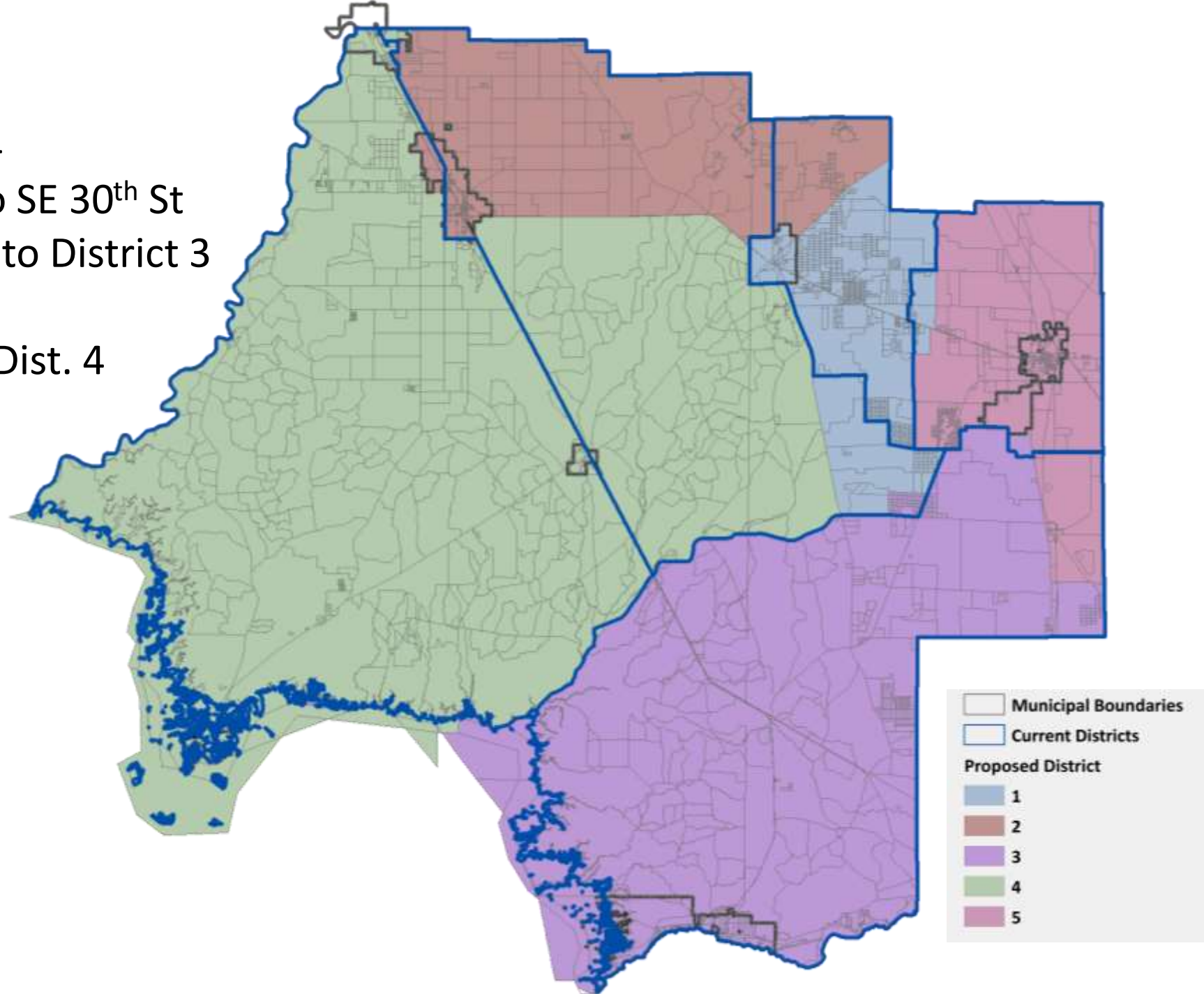
District	Total
1	8663
4	8593
3	8581
5	8579
2	8499



# Option B

- District 2 expands to SR 24
- District 1 expands south to SE 30<sup>th</sup> St
- District 5 expands south into District 3
- City of Chiefland to Dist. 2
- City of Fanning Springs to Dist. 4

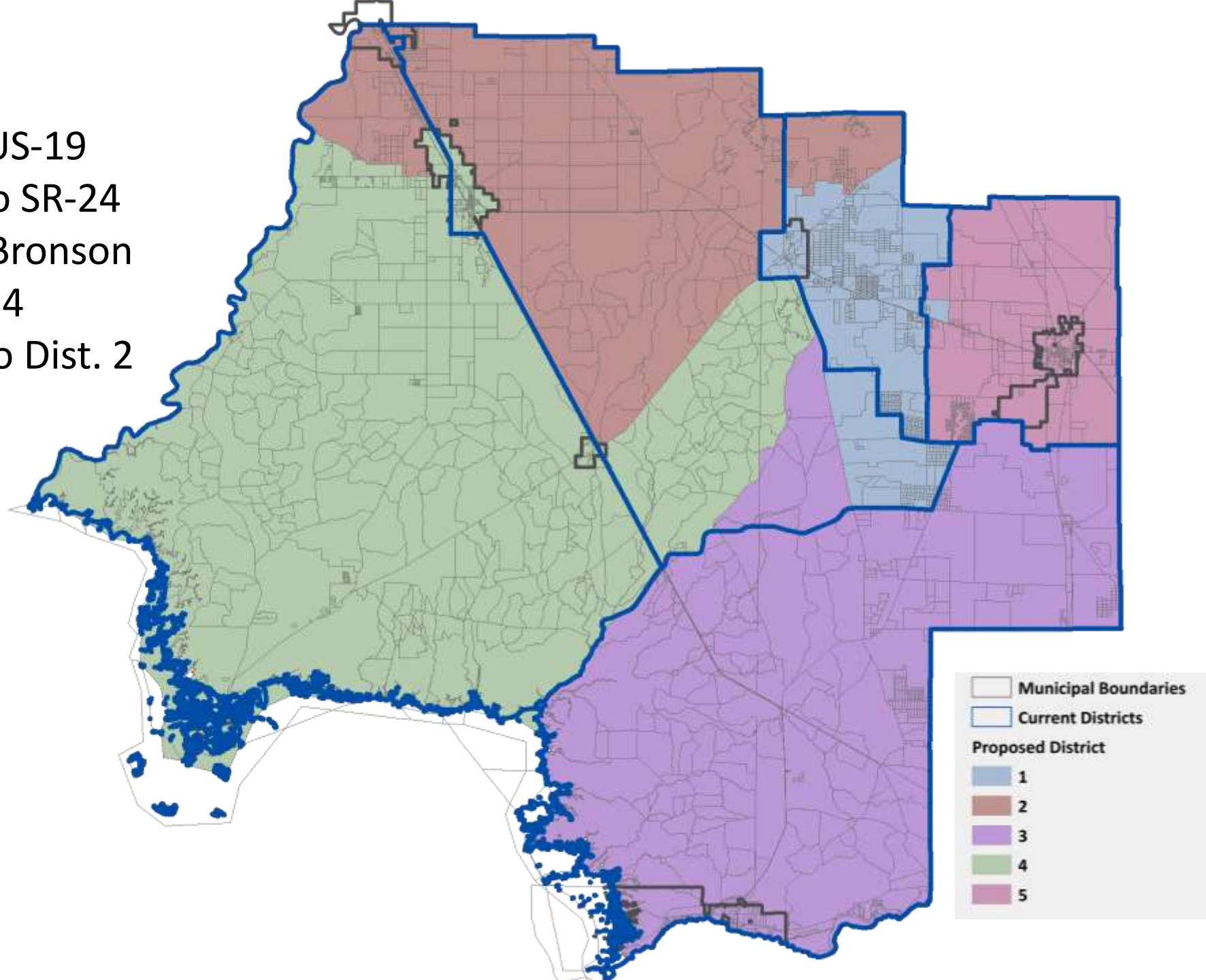
District	Total
5	8657
4	8649
2	8554
1	8533
3	8522



# Option C

- Dist. 2 expands west of US-19
- District 2 expands east to SR-24
- Dist. 4 crosses US-19 to Bronson
- City of Chiefland to Dist. 4
- City of Fanning Springs to Dist. 2

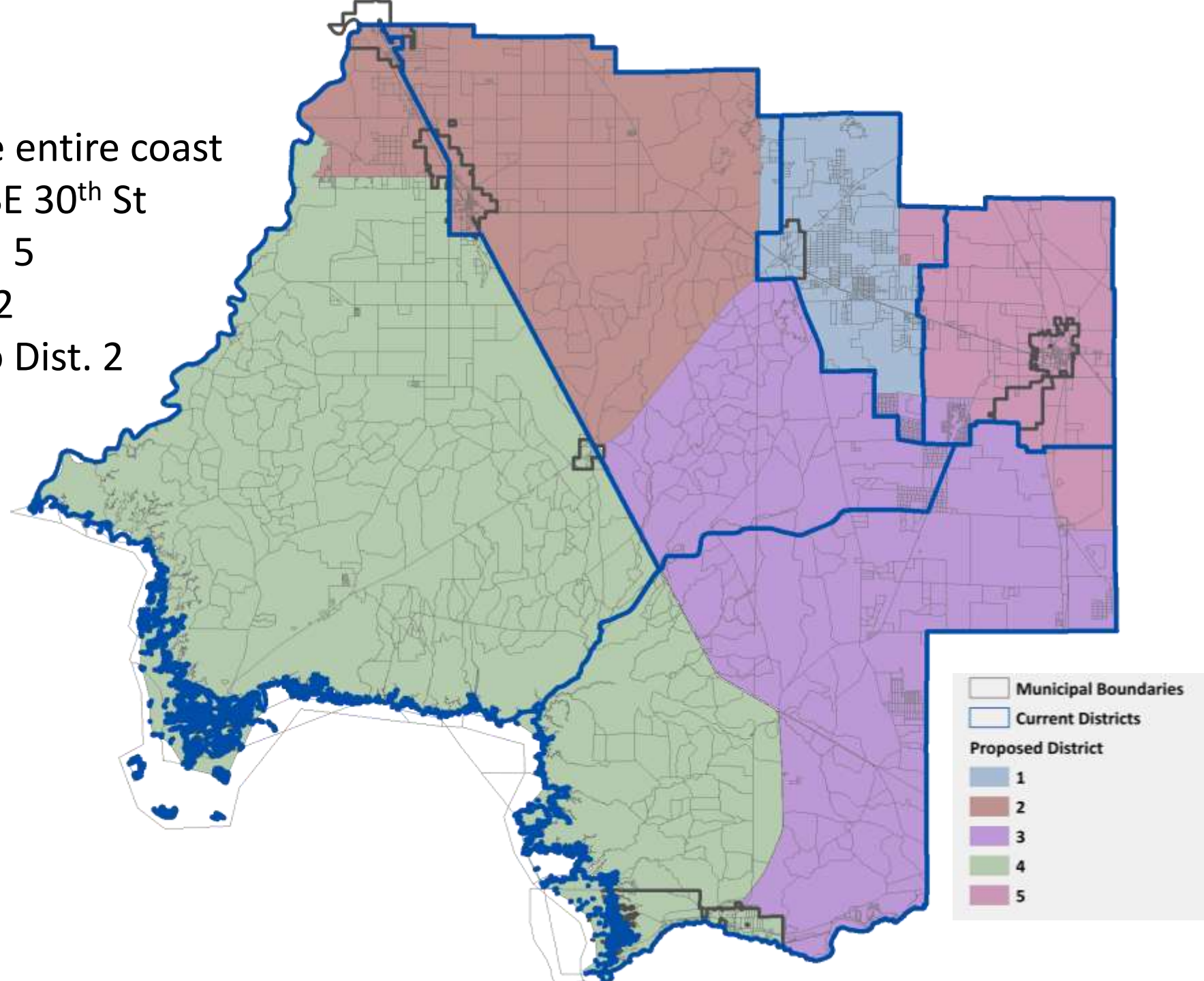
District	Total
3	8721
1	8629
2	8608
5	8556
4	8401



# Option D

- Dist. 4 extends across the entire coast
- Dist. 1 extends south to SE 30<sup>th</sup> St
- Dist. 3 extends into 1 and 5
- City of Chiefland to Dist. 2
- City of Fanning Springs to Dist. 2

District	Total
1	8663
4	8593
3	8581
5	8579
2	8499



# Next Steps

- Gather input from the public and elected officials
- First Reading scheduled for County and School Board
- Anticipated second readings in mid-November
- Final reading and recommendation in mid-December

# Levy County Redistricting Public Workshops

Board staff will be holding five public community meetings to consider community input on alternative district maps. Citizens are invited to attend whichever meeting is best for them. All meetings will begin at 6:00 pm and will each be one-hour long. Please call 352-486-5218, ext. 2 if you need more information.

<b>Date/Time</b>	<b>Location</b>	<b>Address</b>
<b>Monday, October 11, 2021 – 6:00 PM</b>	<b>Rosewood Baptist Church</b>	<b>6331 SW 98<sup>th</sup> Terrace Cedar Key, FL 32621</b>
<b>Monday, October 18, 2021 – 6:00 PM</b>	<b>Inglis Community Center</b>	<b>137 Hwy 40 W Inglis, FL 34449</b>
<b>Monday, October 25, 2021 – 6:00 PM</b>	<b>Tommy Usher Center</b>	<b>506 SW 4<sup>th</sup> Ave Chiefland, FL 32626</b>
<b>Monday, November 1, 2021 – 6:00 PM</b>	<b>Williston Municipal Complex</b>	<b>50 NW Main Street Williston, FL 32696</b>
<b>Monday, November 8, 2021 – 6:00 PM</b>	<b>Levy County Government Center</b>	<b>310 School Street Bronson, FL 32621</b>