

NORTHERN TURNPIKE EXTENSION

Levy County BOCC Update

Stephanie J. Sharp, P.E., Florida's Turnpike
William Burke, PLA, Project Manager (HDR)

December 21, 2021



AGENDA

- ✓ Project Description
- ✓ Project Development Process
- ✓ Project Approach
- ✓ Project Goals
- ✓ Study Area
- ✓ Preliminary Alternative Corridors
- ✓ Project Schedule
- ✓ How to Comment and Contact Information

FPID Number: 449743-2
ETDM Number: 14480



www.floridasturnpike.com/NTE

**NORTHERN TURNPIKE EXTENSION
PROJECT BRIEFING**



PROJECT DESCRIPTION

The Northern Turnpike Extension project is a proposed extension of Florida's Turnpike "from its northerly terminus in Wildwood to a logical and appropriate terminus as determined by the Florida Department of Transportation (FDOT)" per Senate Bill (SB) 100 (2021), codified in section 339.66(6), Florida Statutes.

The Legislature finds that the extension of Florida's Turnpike is in the strategic interest of the state.

FPID Number: 449743-2

ETDM Number: 14480



www.floridasturnpike.com/NTE

**NORTHERN TURNPIKE EXTENSION
PROJECT BRIEFING**



PROJECT DEVELOPMENT PROCESS

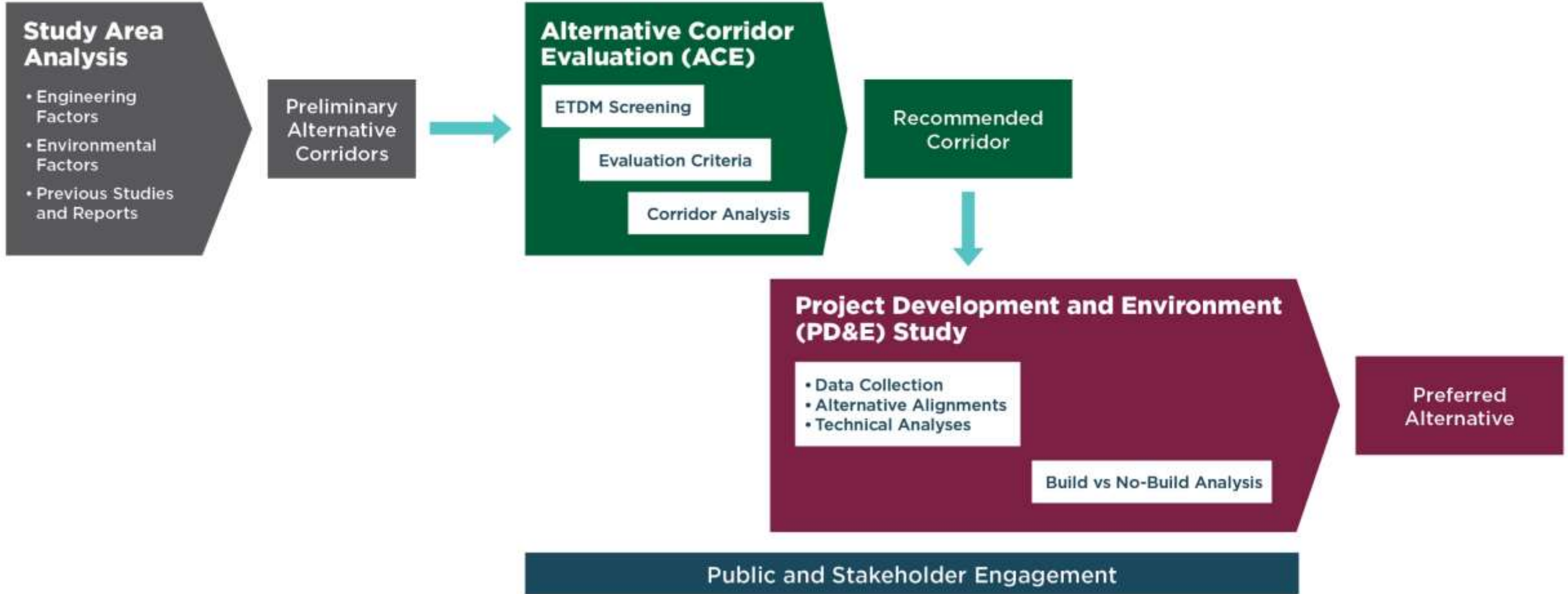
WE ARE HERE



- Efficient Transportation Decision Making (ETDM) Screening
- Public Kickoff Meeting
- Alternative Corridor Evaluation (ACE)
 - Existing Conditions
 - Preliminary Future Traffic
 - Corridor Analysis
 - Documentation
- Recommend Alternative Corridor for detailed PD&E evaluation

FPID Number: 449743-2
ETDM Number: 14480

PROJECT APPROACH



FPID Number: 449743-2
ETDM Number: 14480

PROJECT GOALS



**ENHANCE
REGIONAL
CONNECTIVITY**



**ADDRESS REGIONAL
CONGESTION
AND SAFETY**



**ACCOMMODATE
INCREASED TRAVEL
DEMAND**

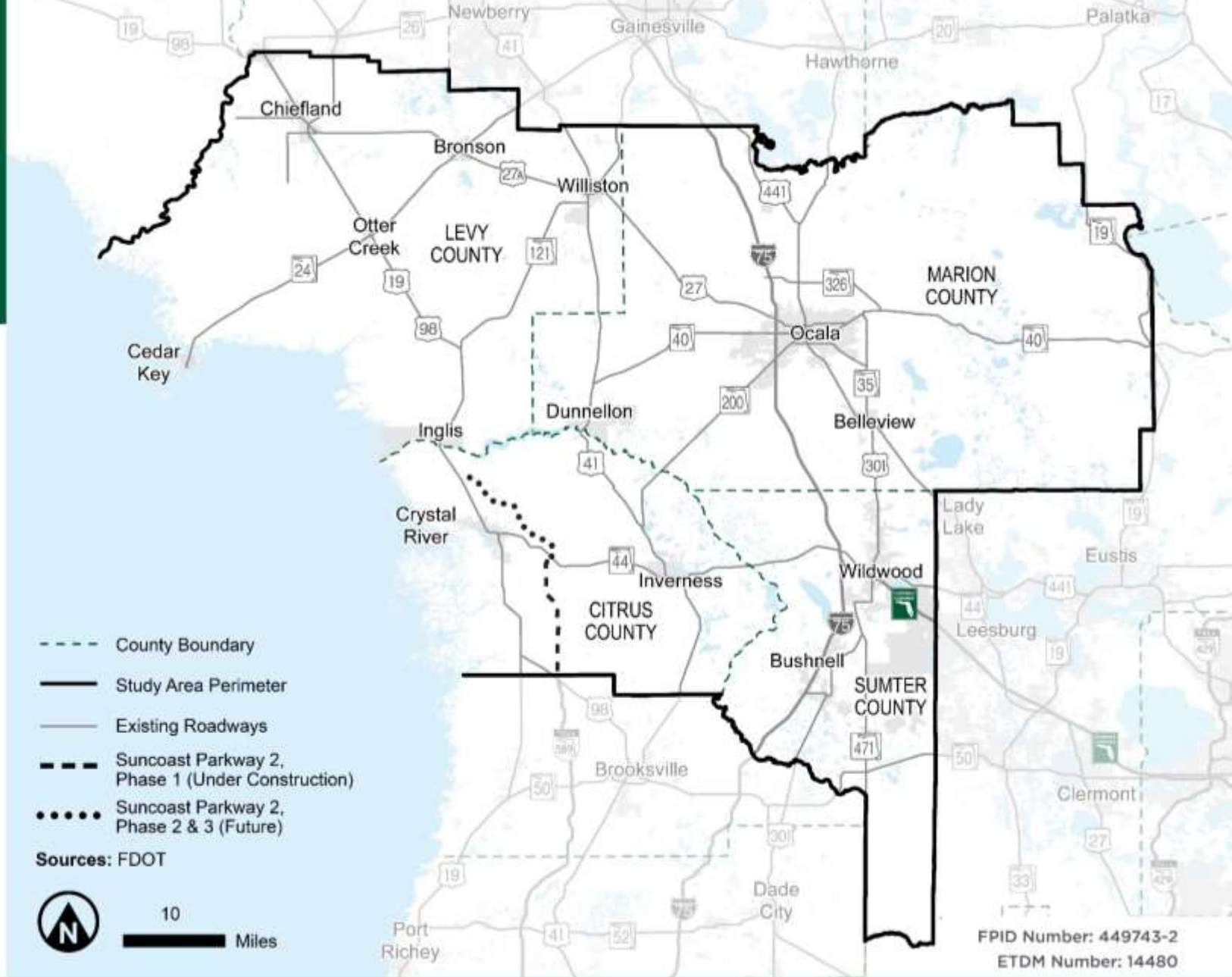


**IMPROVE
HURRICANE
EVACUATION**

FPID Number: 449743-2
ETDM Number: 14480

STUDY AREA

The study area includes Citrus, Levy, Marion, and Sumter counties



FUTURE LAND USE

Future Land Use Type

-  Agriculture
-  City
-  Commercial
-  Conservation
-  Mining
-  Industrial
-  Farmland Preservation Area
-  Mixed Use
-  Public
-  Residential
-  Recreation
-  Water



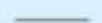

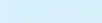
Comprehensive Plan Dates

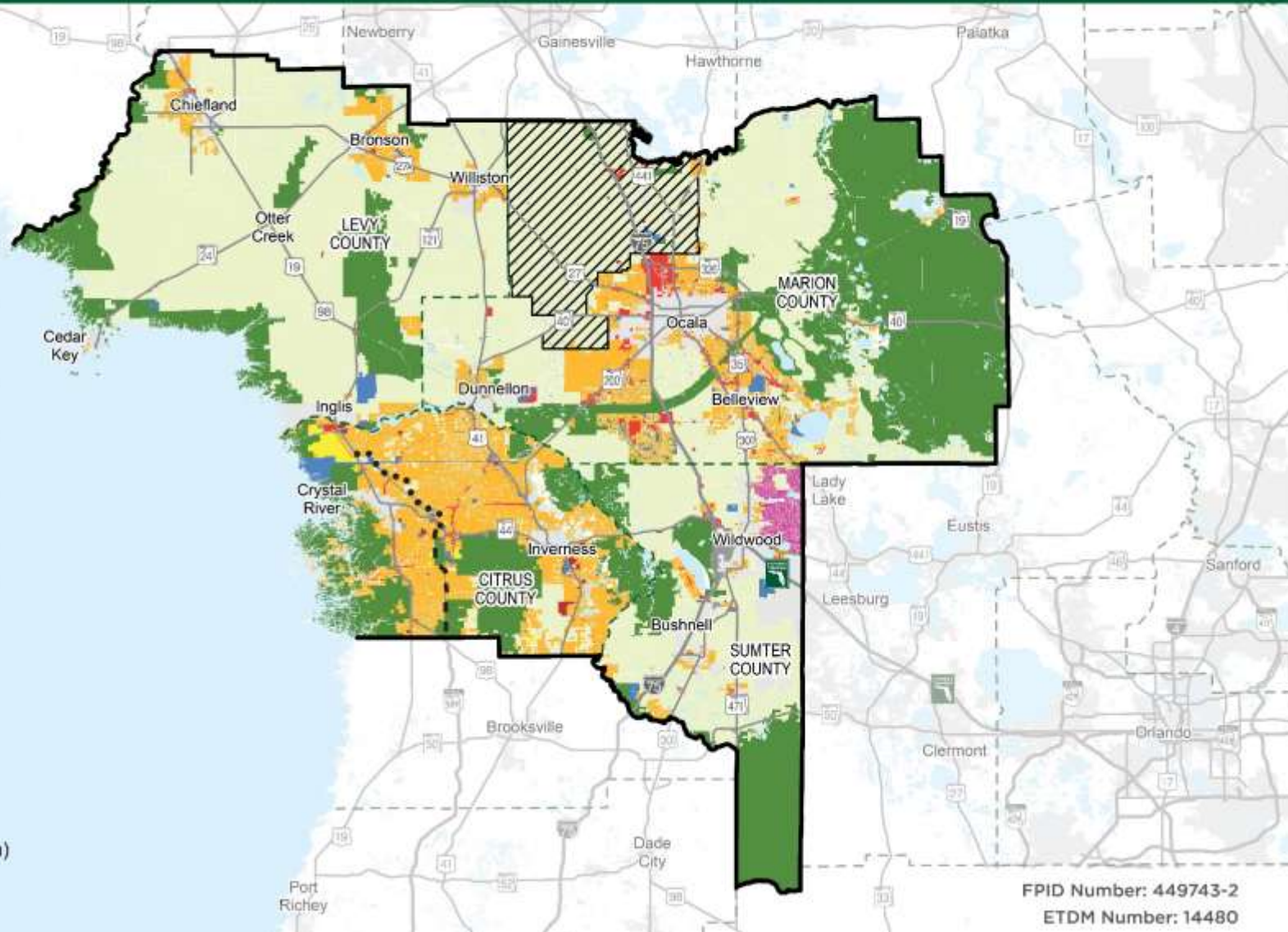
County	Adoption/Amendment Year	Horizon Year
Citrus	2006	2030
Levy	2016	2026
Marion	2018	2045
Sumter	2016	2035

This generalized map includes comprehensive plan future land use category designations at the county level and does not include the category designations within the towns and cities.

Sources: FDOT; FGDL; Citrus County; Levy County; Marion County; Sumter County



-  County Boundary
-  Study Area Perimeter
-  Existing Roadways
-  Suncoast Parkway 2, Phase 1 (Under Construction)
-  Suncoast Parkway 2, Phase 2 & 3 (Future)



FPID Number: 449743-2
ETDM Number: 14480

ENHANCE REGIONAL CONNECTIVITY

ALTERNATIVE TO CONGESTED I-75

EXPAND ACCESS TO NEARBY METRO AREAS

IMPROVE ACCESS TO LOCAL EMPLOYMENT CENTERS

44% OF RESIDENTS WORK MORE THAN 25 MILES FROM THEIR HOMES

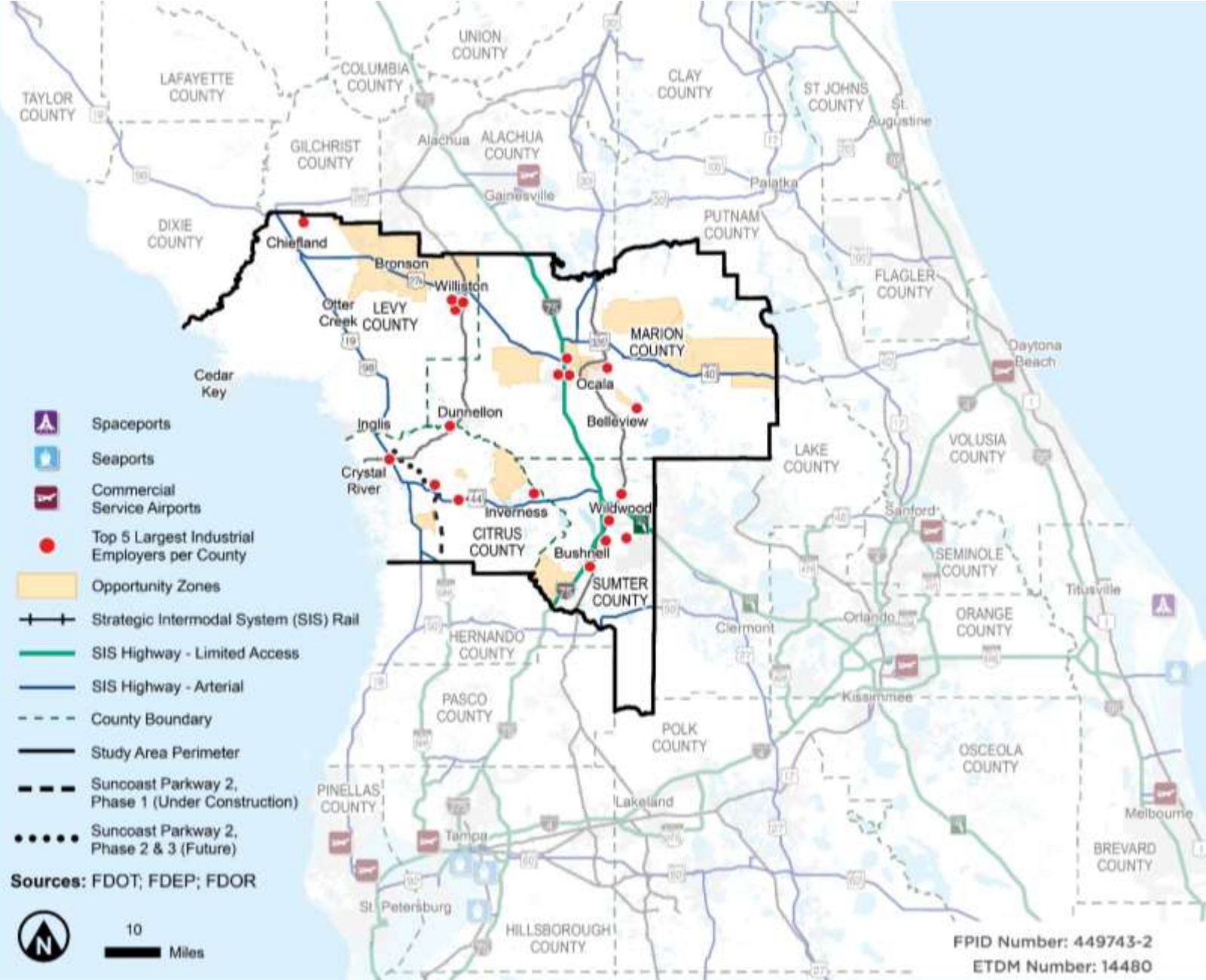


2045 STATEWIDE FREIGHT PROJECTIONS

34% INCREASE IN IMPORT TONNAGE

81% INCREASE IN EXPORT TONNAGE

Source: FDOT, Freight and Logistics Overviews, 2021



ACCOMMODATE INCREASED TRAVEL DEMAND



2050 PROJECTIONS

**43%
POPULATION**
FROM 2019

**51%
TRAFFIC**
FROM 2019

**54%
EMPLOYMENT**
FROM 2019

Population Growth by Traffic Analysis Zone (TAZ) (2019 - 2050)

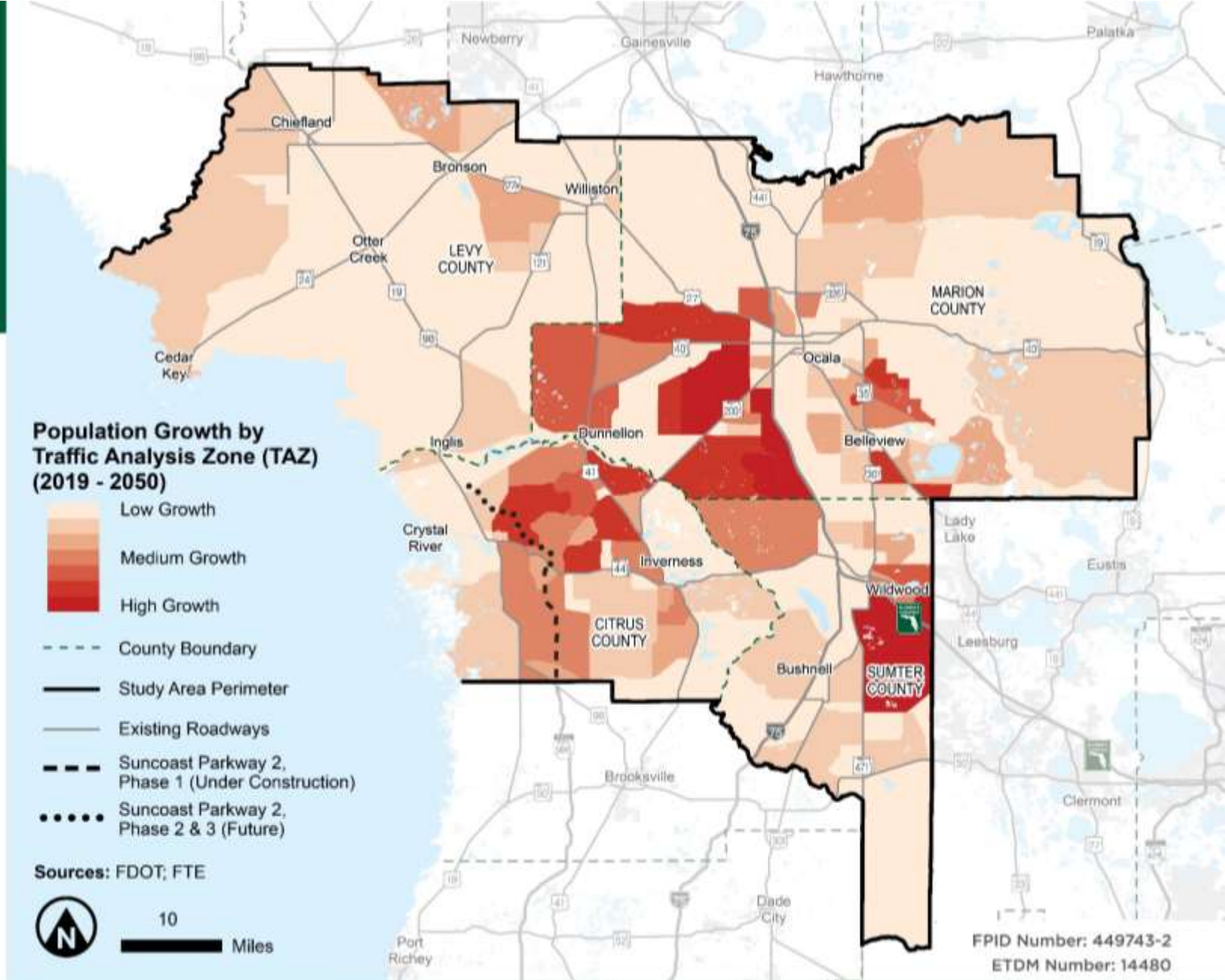
-  Low Growth
-  Medium Growth
-  High Growth
-  County Boundary
-  Study Area Perimeter
-  Existing Roadways
-  Suncoast Parkway 2, Phase 1 (Under Construction)
-  Suncoast Parkway 2, Phase 2 & 3 (Future)

Sources: FDOT; FTE



10

Miles



FPID Number: 449743-2
ETDM Number: 14480

ADDRESS REGIONAL CONGESTION AND SAFETY



84,000+
CRASHES
IN 5 YEARS

737 FATAL
CRASHES

21,850 INJURY
CRASHES

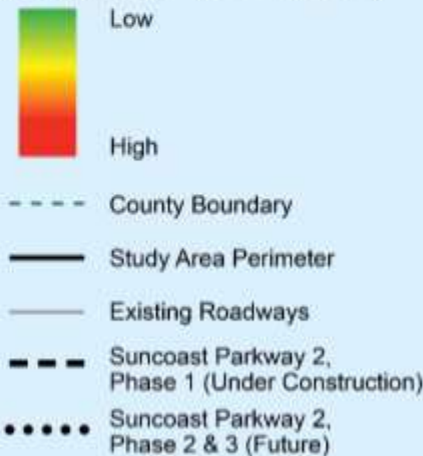
ALL I-75
LANES CLOSED

1 out of **9** days

80%
of congestion is
non-recurring



Total Crash Density
(Jan 1, 2014 - Dec 31, 2018)

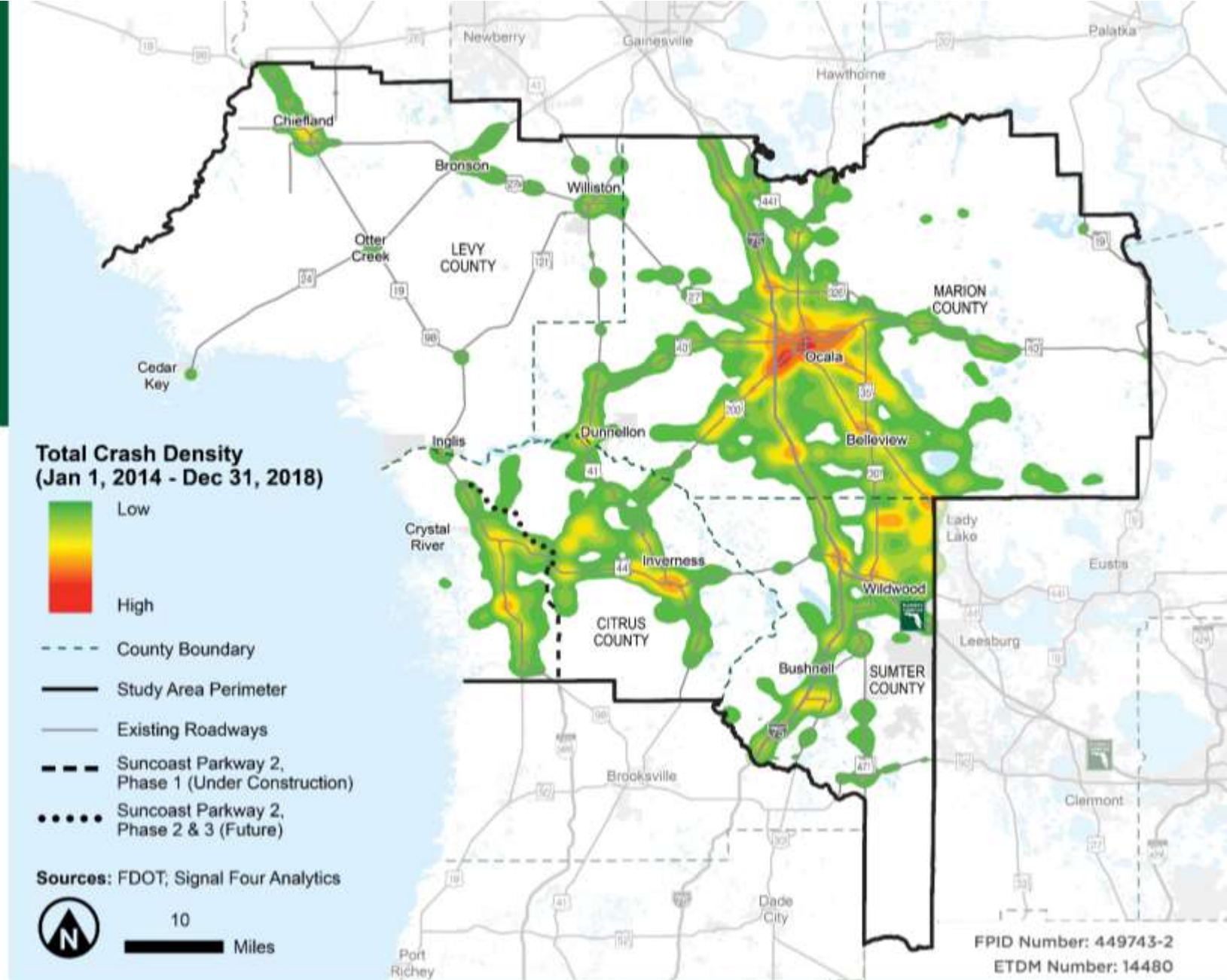


Sources: FDOT; Signal Four Analytics



10

Miles



FPID Number: 449743-2
ETDM Number: 14480

IMPROVE HURRICANE EVACUATION



Evacuating Population
356k+



51k+ People Need Shelter



Evacuating Vehicles
199k+

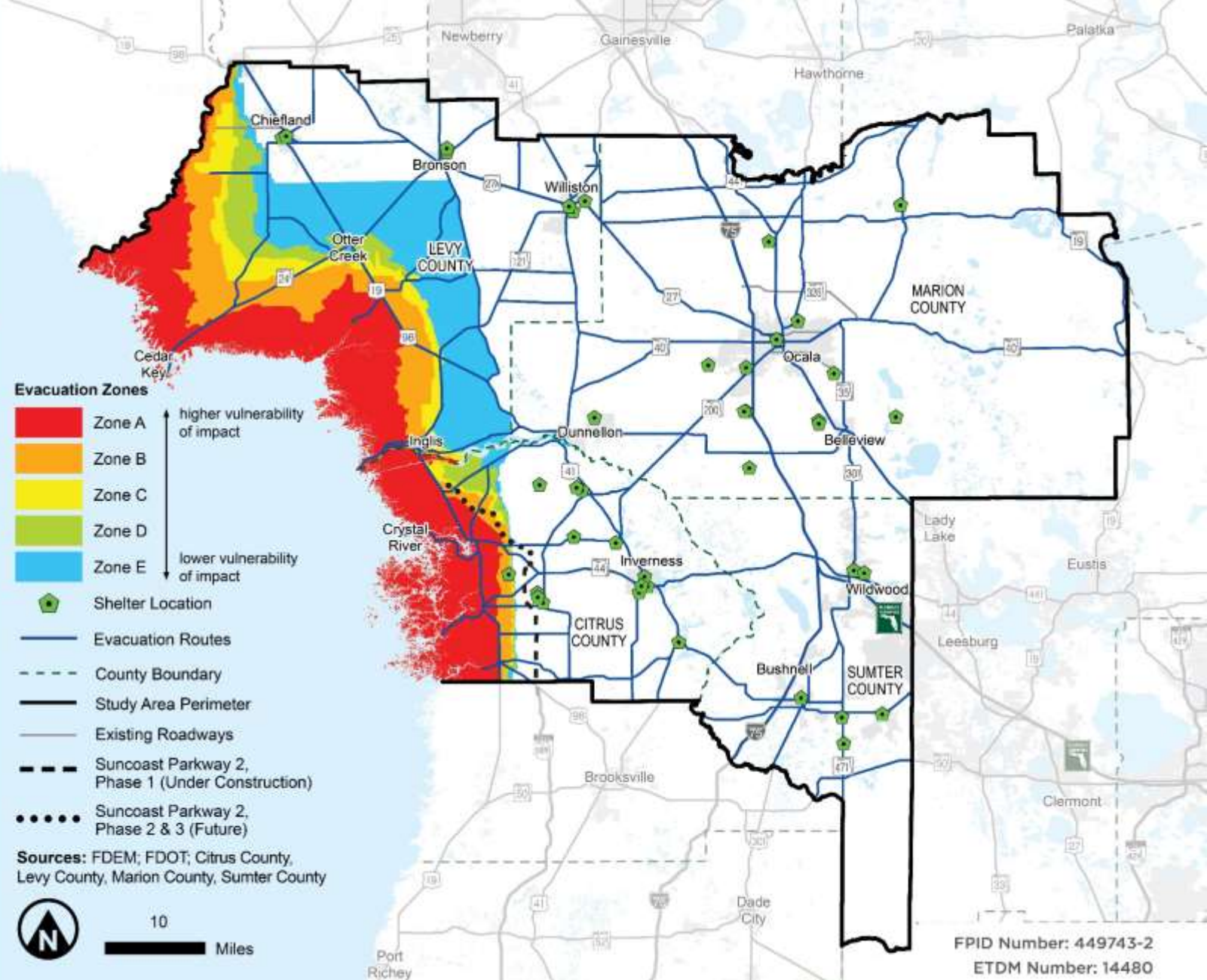


Clearance Time
24-56 hours



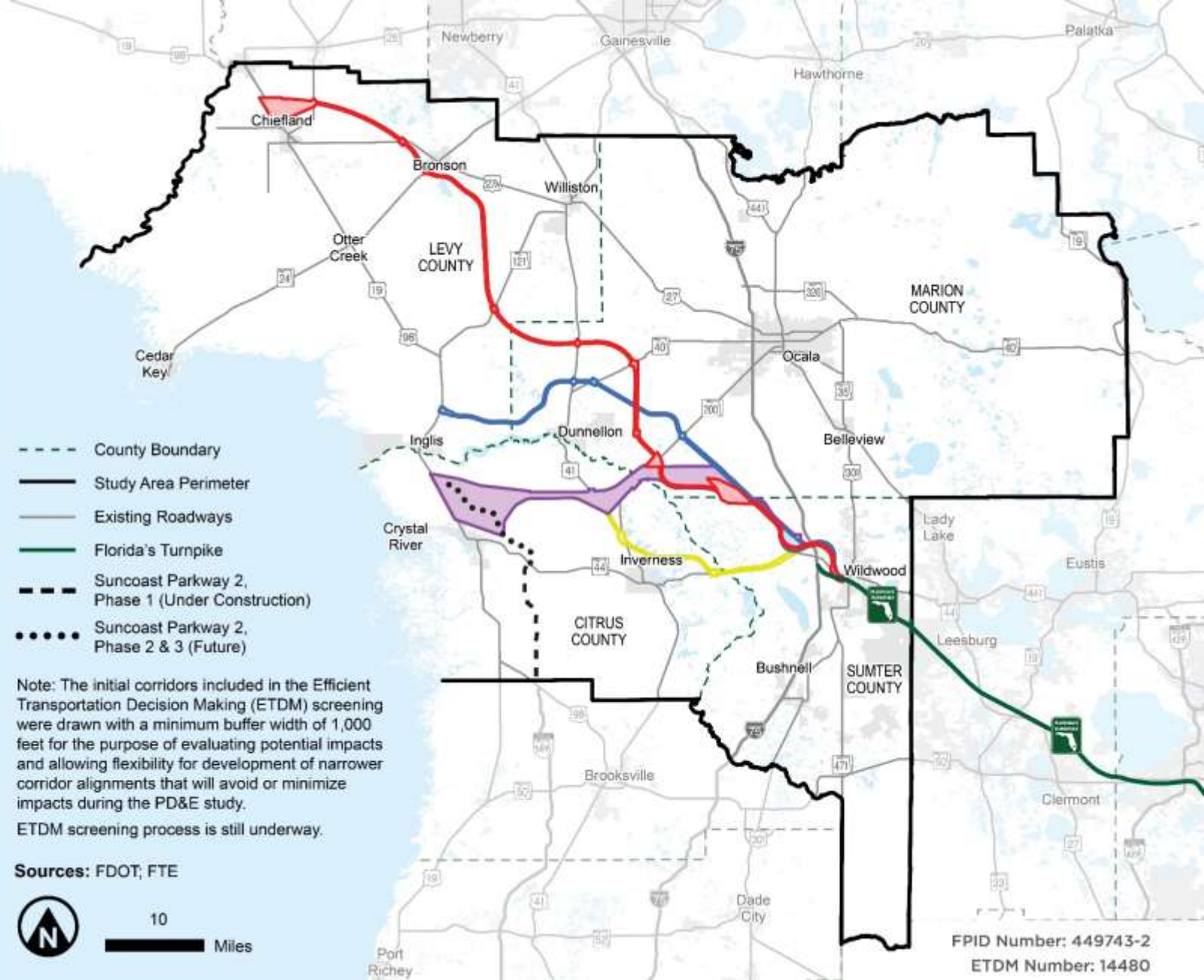
Demand
Exceeds Capacity on Evacuation Routes

*Analysis based on Category 5 storm



PRELIMINARY ALTERNATIVE CORRIDORS

-  Alternative Corridor North A
-  Alternative Corridor North B
-  Alternative Corridor Central
-  Alternative Corridor South



PROJECT SCHEDULE

PROJECT ACTIVITY	2021		2022				2023
	JUL-SEP	OCT-DEC	JAN-MAR	APR-JUN	JUL-SEP	OCT-DEC	JAN-MAR
Start Alternative Corridor Evaluation (ACE)		●					
Efficient Transportation Decision Making (ETDM) Screening		■					
Start Project Development and Environment (PD&E) Study		●					
Public Kickoff Meeting		●	WE ARE HERE				
Data Collection			■				
Alternative Corridor Evaluation Report (ACER)			■	■			
Engineering and Environmental Analysis			■	■	■		
Public Information Meeting					●		
State Environmental Impact Report (SEIR)						■	■
Public Hearing						●	
Report to Governor and Legislature						●	
PD&E Study Complete							●
Continuous Public Involvement		■	■	■	■	■	

This schedule is preliminary and subject to change.

FPID Number: 449743-2

ETDM Number: 14480



www.floridasturnpike.com/NTE

**NORTHERN TURNPIKE EXTENSION
PROJECT BRIEFING**



CONTACT INFORMATION

For additional information, or to make comments, visit the project website at www.floridasturnpike.com/NTE

William Burke, PLA

Project Manager for Florida's
Turnpike Enterprise (HDR)

407-264-3142

william.burke@dot.state.fl.us

Para información en español, por favor contacte:

Henry Pinzon, P.E.

Turnpike Environmental
Management Engineer

407-264-3802

henry.pinzon@dot.state.fl.us

FPID Number: 449743-2
ETDM Number: 14480



www.floridasturnpike.com/NTE

**NORTHERN TURNPIKE EXTENSION
PROJECT BRIEFING**



NORTHERN TURNPIKE EXTENSION



Thank You

