

THE SMALL TOWN ISSUE

taste OF THE south

AUTHENTICALLY SOUTHERN, ALWAYS DELICIOUS

95+
RECIPES
& TIPS

NEW BEST BRUNCHES

PAGE 61

TASTE OF THE SOUTH | MARCH/APRIL 2026 | volume 23, issue 2

Skillet
Buttermilk
Biscuits
page 64

MARCH/APRIL 2026 vol. 23, Issue 2

\$7.99US



0 74851 02873 5 04

DISPLAY UNTIL MAY 12, 2026

Slow Cooker
Suppers

page 22

Perfect
Pound Cakes

page 45

New Ways with
Sweet Tea

page 81

A HOFFMANN MEDIA PUBLICATION



Blackwater Bar & Grill

LAI D BACK IN LEVY

www.visitlevy.com

 @visitlevycounty



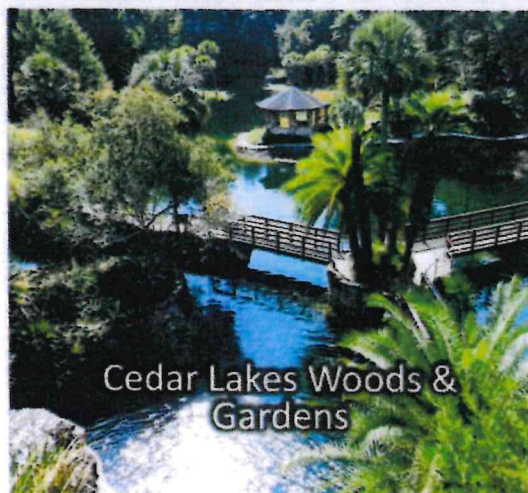
@levycountyvisitorsbureau



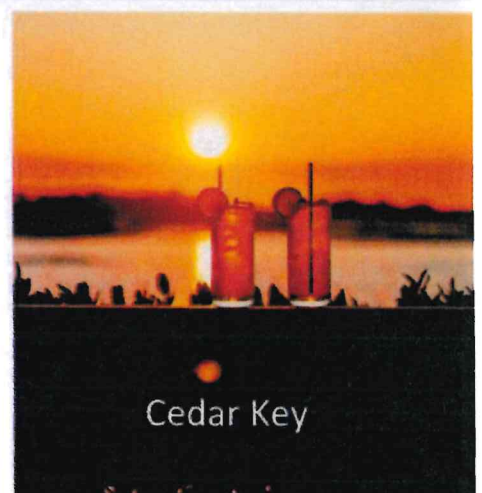
Refined Relaxation. Endless Horizons. Gulf Coast Living.



Black Prong Resort



Cedar Lakes Woods & Gardens



Cedar Key

Florida's

CELEBRATING **10** YEARS **FREE!**

The Hidden Coast

OUTDOOR RECREATION | LODGING | RESTAURANTS | SHOPPING | REAL ESTATE
February 2026 The Last of Old Florida

9th Annual Lower Suwannee Art & Nature Festival

SATURDAY, MARCH 14, 2026

10am - 3pm • Glen Dyals Park

21354 SE Hwy 349, Suwannee, FL 32692

SEE PAGES 6-7
FOR MORE INFORMATION!



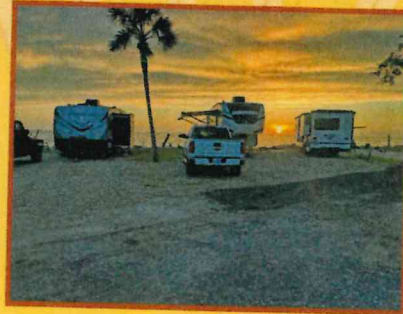
REAL ESTATE
BACK PAGE

Waterfront Sites on the Gulf at Keaton Beach!

Boat ramp, boat docks & wifi
Family owned and operated
Full hookups every site
Pet friendly
Nightly weekly long-term



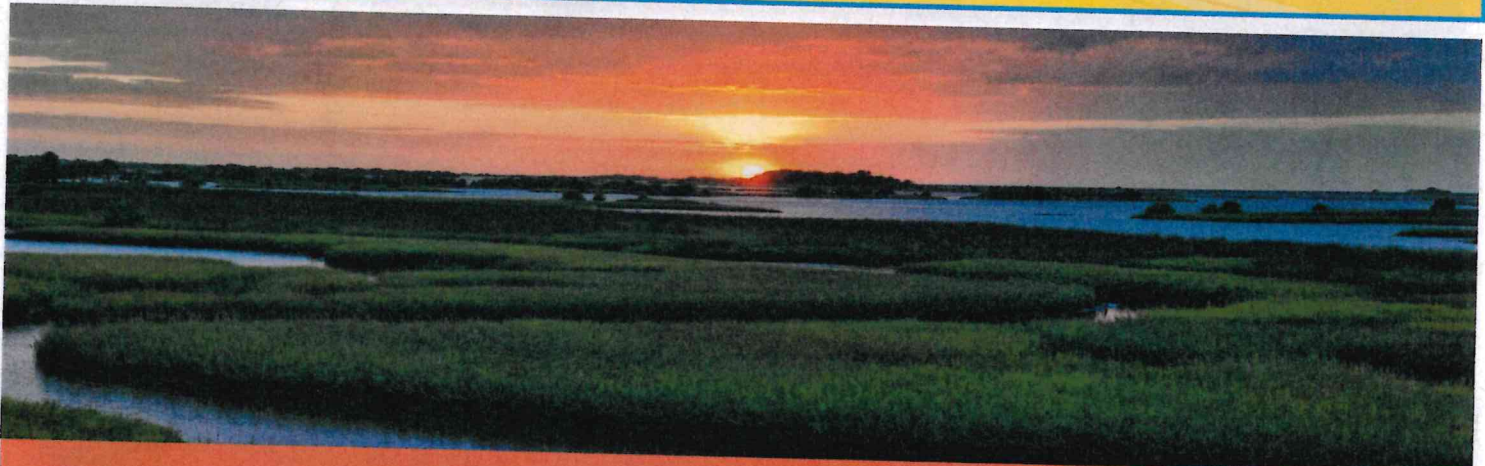
Ms. Lynn's
Old Pavilion RV Park, LLC.
850-578-2484
FULL HOOKUP - 30AMP & 50AMP
Waterfront Sites on The Gulf at Keaton Beach



Scan to see our website.
Book online!

20771 Keaton Beach Dr.
Perry, Florida 32348
850-578-2484

www.oldpavilionrvpark.com



LAID BACK IN LEVY

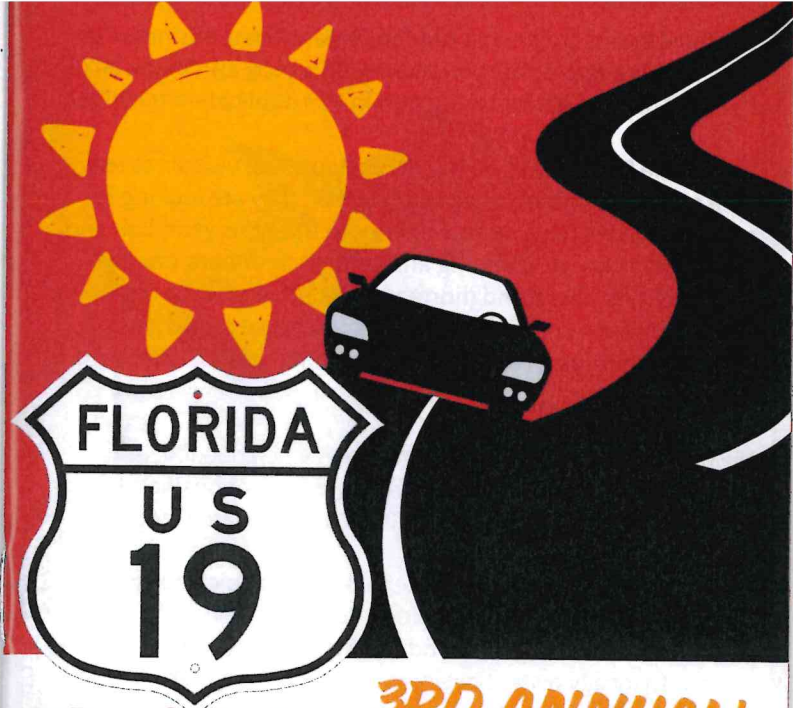
www.visitlevy.com

 @visitlevycounty  @levycountyvisitorsbureau

Refined Relaxation. Endless Horizons. Gulf Coast Living.



Photos by Bonish Photography



Florida's *3RD ANNUAL!*
Hidden/Nature Coast
BUSINESS CARD DIRECTORY
COVERING 15 COUNTIES

The Nature Coast is Florida's largest coast and spans eight counties including Wakulla, Jefferson, Taylor, Dixie, Levy, Citrus, Hernando, and Pasco. Including popular outdoor activities it also offers a wide variety of businesses including...

bait and tackle • boat service • camping and cabins
chambers • charters • feed stores
financial and mortgages • health and wellness
home services • insurance • land clearing
pawn shops • printing and media • promotions
real estate • restaurants • spirits • tourism
UF IFAS • weather

www.FLAcoastBCD.com

Catrina

Sistrunk

350 School St., Suite 108
Bronson, FL 32621

Tourism Manager
TF 1(877) 387-5673
Cell (352) 914-7909

Sistrunk-catrina@levyconty.org
www.VisitLevy.com



LEVY COUNTY

VISITORS BUREAU

CHAMBERS/TDC

CHARTERS

Capt. Cliff "JR" Mundinger

www.boatsticks.com

Boatsticks@yahoo.com

850.518.5428



FLORIDA SALTWATER FLATS FISHING CHARTERS

Captain Brady
352-318-8429

Inshoredfish.com

CHAMBERS/TDC

CHARTERS

Taylor County

Steinhatchee to Perry, Naturally

PERRY TAYLOR COUNTY CHAMBER
OF COMMERCE & TOURISM DEVELOPMENT

Dawn V. Perez, Executive Director

428 North Jefferson St. | PO Box 892
Perry, FL 32348
Email: taylorchamber@fairpoint.net

Phone: (850) 584-5366
(Cell) 850-843-0992
Fax: (850) 584-8030



Withlacoochee Gulf Area
Chamber of Commerce
Inglis & Yankeetown, Florida

Elvis was here!

Mailing Address
P.O. Box 427, Inglis, Florida 34449

Visitors Office
167 Highway 40 West, Inglis, Florida 34449
Office hours: Fridays 10-2
Office Telephone: 352-447-3383
www.inglisyankeetownchamber.com

CHAMBERS/TDC

CHARTERS



CHARTERS

Light Tackle/Trout/Redfishing

Full & Half Day Trips Available

Econfina River Destination

Capt. Kenny Graves
USCG Licensed

850.508.5512

CHARTERS

CHARTERS



Inshore Charters

Spin • Fly • Plug

EcoTours

Capt. Wade Osborne

813.286.3474

Afashionado.com



J. LOWE'S

GUIDE SERVICE
Licensed & Insured

352.362.0656

jason.lowe.5245

jasondlowe

www.JLovesGuideService.com | Jason@Jlowesguideservice.com

CHARTERS

CHARTERS



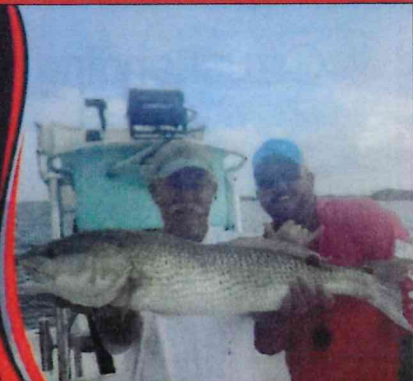
CAPT. JASON CLARK

In The Slot Fishing
Charters

Inshore | nearshore | snorkeling
| scalloping (in Steinhatchee FL)

Cedar Key FL
(352)-639-3209

www.intheslotfishing.com



The

FISHING LOWDOWN



THE HIDDEN COAST'S MONTHLY TAB ON FISHING & OUTDOOR RECREATION

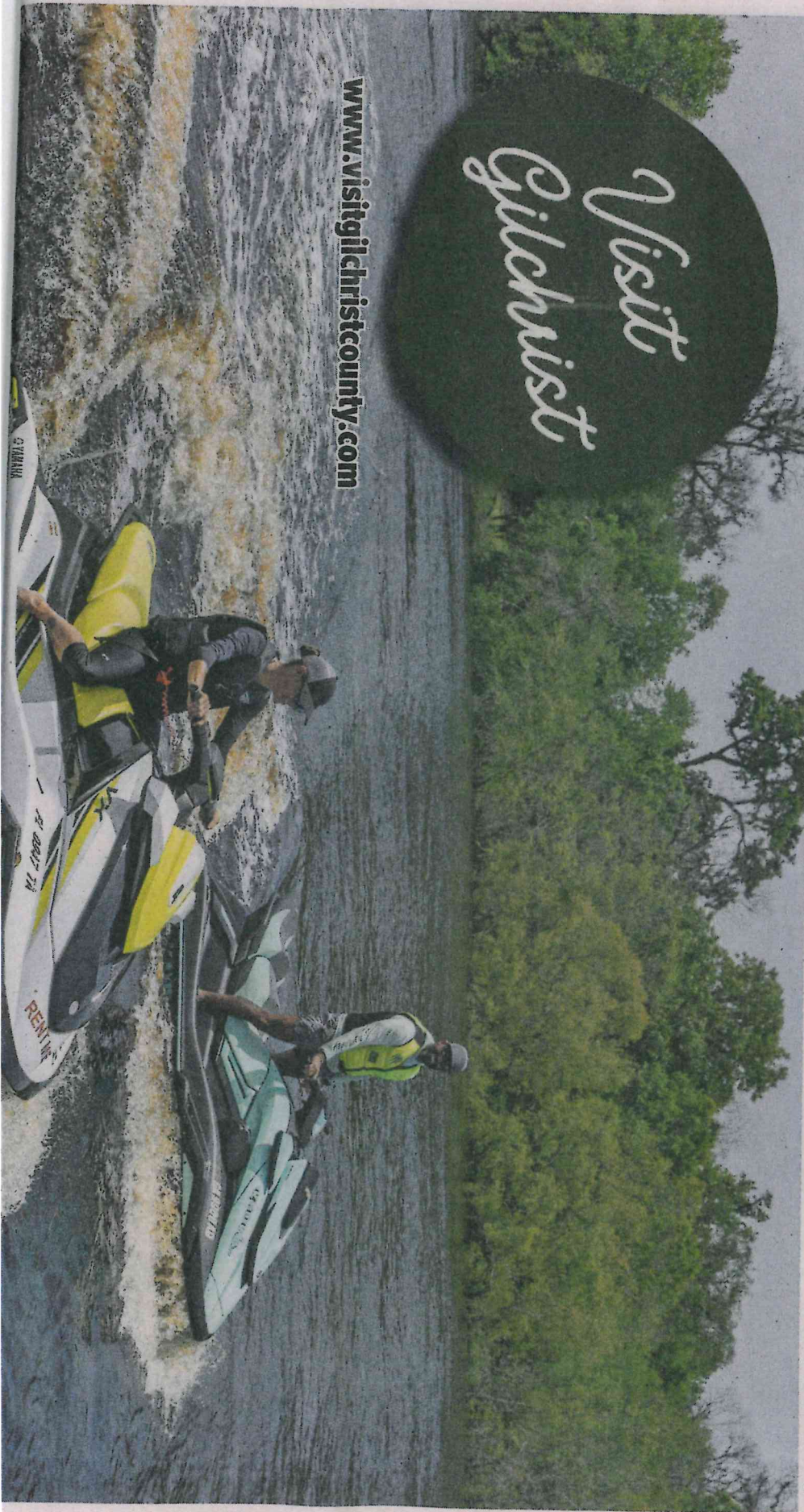
Volume 4 Edition 2 | February 2026

FREE!
Take One

Taylor • Dixie • Levy • Citrus • Hernando • Pasco • Hillsborough • Franklin • Bay

*Visit
Gilchrist*

www.visitgilchristcountry.com



February 13-15, 2020

\$10 Entrance Fee Covers
All Entertainment & Festival
14 & Under Free

352-356-8185

www.SteinhatcheeChamber.com



FISHING

Tournament

HOT Breakfast
at the Community
Center served by
the American Legion
Sat. & Sun. 7-9 AM \$10



Levy County Visitors Bureau

VisitLevy.com

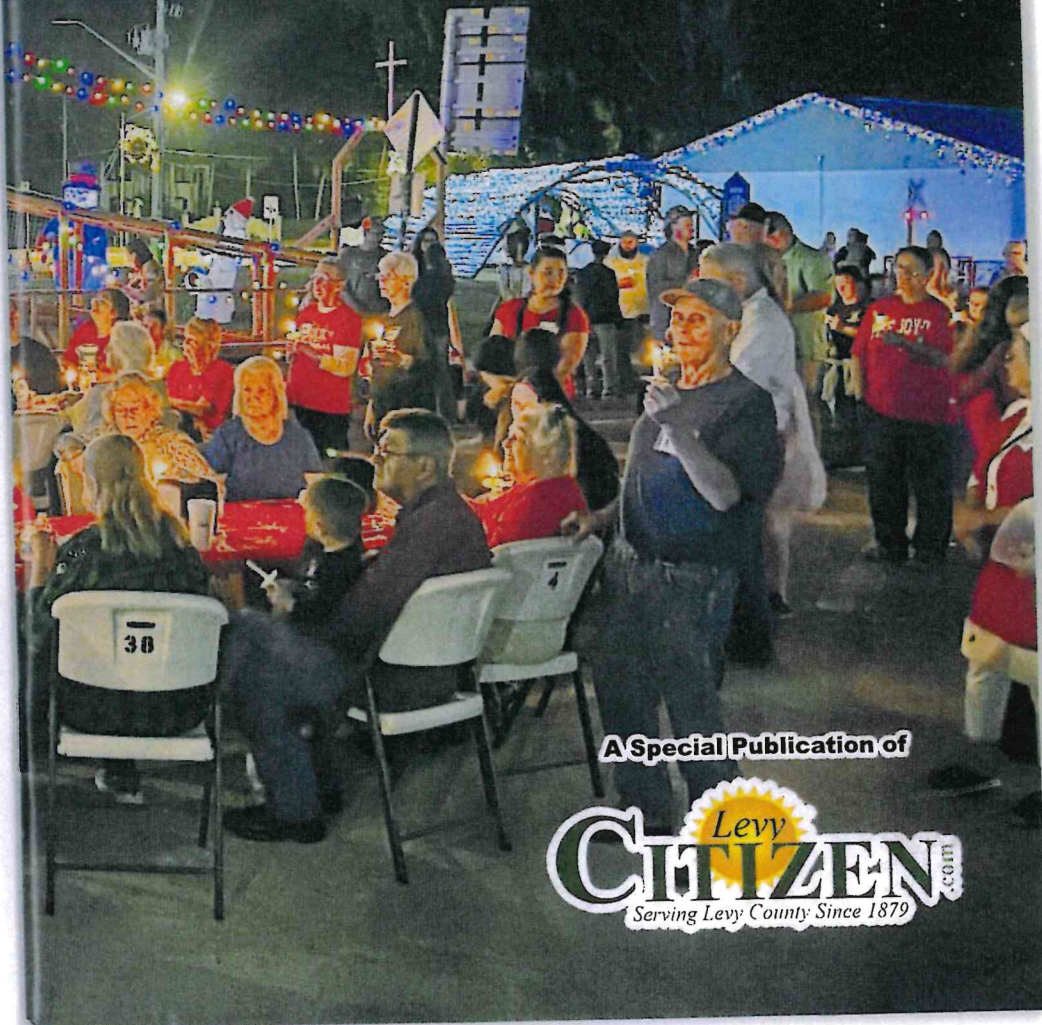
Photos by: Highway 40 Boat Ramp-Shore Builders, Airboat-Bonish Photography & Big Dock-Living Cedar Key

Levy County

FYI

For Your Information
Winter 2025

FREE



A Special Publication of

Levy
CITIZEN.COM
Serving Levy County Since 1879

Did you know?

By METRO CREATIVE

It's hard to imagine Valentine's Day without chocolate, and that association can be traced to a name that is very familiar to people who enjoy sweets on February 14. According to History.com, Richard Cadbury utilized advancements at his family's chocolate factory in England to produce new varieties of what was then known as "eating chocolate." Cadbury then began marketing eating chocolates in decorative boxes, and while History.com notes he never patented the heart-shaped box, it's widely believed Cadbury was the first to create one.



LAID BACK IN LEVY

www.visitlevy.com

 @visitlevycounty

 @levycountyvisitorsbureau

Refined Relaxation. Endless Horizons. Gulf Coast Living.



Photos by Bonish Photography

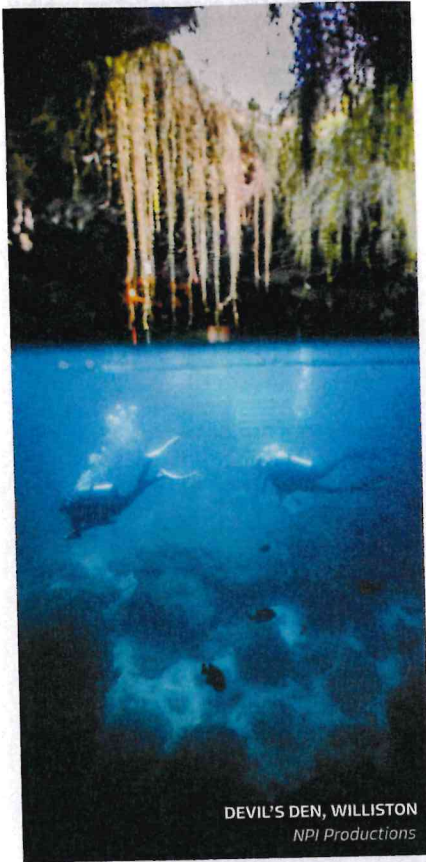
THE OFFICIAL SOURCE FOR TRAVEL PLANNING

VISIT **FLORIDA**[®]



LIVE MORE
FLORIDAYS





DEVIL'S DEN, WILLISTON
NPI Productions

LAI D BACK IN LEVY
www.visitlevy.com

@visitlevycounty @levycountyvisitorsbureau

Refined Relaxation. Endless Horizons. Gulf Coast Living.

Photos by Bonish Photography

PANACEA

Gulf Specimen Marine Laboratory
gulfspecimen.org
Visitors interact with creatures from the North Florida Coast in touch tanks and aquariums.

TALLAHASSEE

Alfred B. Maclay Gardens State Park
floridastateparks.org/park/maclay-gardens
Beautiful ornamental garden near Tallahassee, Florida.

Arts and Cultural Experiences at Railroad Square
railroadsquare.org
First Fridays at Railroad Square: your monthly destination for art, food, music, and community!

Florida Historic Capitol Museum
fihistoriccapitol.gov
Beautifully restored building features Florida's political history. Open daily, free admission.

Goodwood Museum & Gardens
goodwoodmuseum.org
Please contact the Museum for hours of operation and tour times.

The Grove Museum
thegrovemuseum.com
Explore the ca. 1840 Call-Collins House and ten acres of beautiful grounds at The Grove Museum.

LeMoyne Arts Gallery and Sculpture Gardens
lemoyne.org
Contemporary art gallery with exciting exhibits, gallery shop, sculpture gardens, & workshops

Lofty Pursuits
loftypursuits.com
Soda Fountain, Brunch, Ice Cream, Toys, Victorian Hard Candies, Fun.

Mission San Luis
missionsanluis.org
Make your Special Day HISTORIC at Florida's Apalachee-Spanish Living History Museum!

The State Library and Archives of Florida
dos.myflorida.com/library-archives
The designated information resource provider for the Florida Legislature and all state agencies.

Tallahassee Automobile Museum
tacm.com
It's more than a Museum... It's a Journey Through History

Tallahassee Museum
tallahasseeuseum.org
Explore 52-acres of wildlife, historic buildings, exhibits and scenic vistas.

Union Bank Museum
unionbankmuseum.com
1841 historic bank building featuring exhibits and original artifacts. Free admission.

WAKULLA SPRINGS

Wakulla Springs State Park
floridastateparks.org/park/wakulla-springs
Home of one of the largest and deepest freshwater springs in the world.

WHITE SPRINGS

Stephen Foster Folk Culture Center State Park
floridastateparks.org/parks-and-trails/stephen-foster-folk-culture-center-state-park
Home of the Florida Folk Festival and Stephen Foster Museum, located on the Suwannee River

WILLISTON

Cedar Lakes Woods and Gardens
cedarlakeswoodsandgarden.com
Botanical gardens and wildlife reserve in the city of Williston.

Devil's Den Resort & Pre-Historic Spring
devilsden.com
Resort, Scuba Diving, Snorkeling, swimming and camping

Visitor Services

CROSS CITY

Dixie County Tourist Development Council
visitdixie.com
Where the Suwannee River, Steinhatchee River and National Wildlife Refuge meet the Gulf of America.

GAINESVILLE

Gainesville Regional Airport
flygainesville.com
Gainesville Regional Airport, North Central Florida minutes from the University of Florida

Visit Gainesville, Alachua County, FL
visitgainesville.com
Where Nature and Culture Meet

Visit Natural North Florida
naturalnorthflorida.com
Natural North Florida has an abundance of natural beauty and southern charm.

JASPER

Hamilton County Tourist Development Council
hamiltoncountyflorida.com
North Florida is one of the Sunshine State's little known and most precious treasures.

ATTRACTIONS

KEY TO SYMBOLS: ● = Certified Visitor Information Centers

LAKE CITY

Lake City, Florida's Springlands and Official Visitor Center ●
lakecityfl.com

We offer a full-service visitor center, including brochures, clean restrooms and accessible parking.

LIVE OAK

Visit Suwannee County
visitsuwannee.com

Come discover the nature of things in Suwannee County!

MADISON

Madison County Chamber of Commerce & Tourism
visitmadisonfl.com

Retreat to Vintage Florida, Madison County

MONTICELLO

Jefferson County Tourist Development Council

visitjeffersoncountyflorida.com
Just 25 miles east of Tallahassee, Monticello is Southern charm at its best!

PANACEA

Visit Panacea
visitpanacea.org

A nature lover's paradise of "Old Florida" flavor, you can take a step back to life in the slow lane

Wakulla County Tourist Development Council and Visitor Information Center ●
visitwakulla.com

Located just 25 miles south of the state's capital, Wakulla County is known for its natural wonders.

PERRY

Taylor County Chamber and Tourism Office
taylorflorida.com

For anyone seeking complete packages for vacation planning, please contact our office.

QUINCY

Gadsden County Tourist Development Council
visitgadsdencounty.com

Offers visitors an authentic experience of community with a diversity of outdoor, arts, & shopping.

STARKE

North Florida Regional Chamber of Commerce

northfloridachamber.com
Overflowing with hospitality, striking historical landmarks, sparkling lakes and wildlife areas.

TALLAHASSEE

COCA - Council on Culture & Arts
tallahasseearts.org

COCA promotes and advocates for arts and culture in Florida's capital region

1 **Visit Tallahassee** ●
visittallahassee.com

Florida's Capital City, where captivating events, superb dining, rich history and lush trails await.

TRENTON

Gilchrist County Tourist Development Council

visitgilchristcounty.com
The Gilchrist Tourist Development Council promotes the "Springs Capital of the World"

WHITE SPRINGS

White Springs Historic Preservation Society
historicwhitesprings.com

Experience a historic Florida town on the Suwannee River with natural beauty and cultural significance.

WILLISTON

2 **Levy County Visitors Bureau and Visitor Information Center** ●
visitlevy.com

Levy County is a paradise for outdoor enthusiasts.

ACCOMMODATIONS

KEY TO SYMBOLS

Pet Friendly: 🐾 Pool: 🏊 Travelers with Disabilities: ♿
Accommodation Type: BB = Bed & Breakfast,
H = Hotel/Motel, R = Resort, V = Vacation Rental Home
Location: A = Airport, B = Beachfront, C = Beach Nearby,
D = Downtown, E = Expressway, S = Suburban, W = Waterfront

ALACHUA

Holiday Inn Express & Suites Alachua - Gainesville 🐾 🏊 H E

ihg.com/holidayinnexpress/hotels/us/en/alachua/gnvac/hoteldetail

CEDAR KEY

Cedar Key Harbour Master Suites H B
cedarkeyharbourmaster.com

GAINESVILLE

Best Western Gateway Grand 🐾 🏊 H E
gatewaygrand.com

Home2 Suites by Hilton Gainesville 🏊 H S
hilton.com/en/hotels/gnvtht-home2-suites-gainesville-medical-center

Hotel ELEO at the University of Florida H D
hoteleleo.com

Sweetwater Branch Inn Lodging & Events 🐾 🏊 BB D
sweetwaterinn.com

LAKE CITY

Americas Best Value Inn - Lake City 🏊 H E
abvillakecity.com

Motel 6 Lake City, FL - Medical Center 🐾 H E
motel6.com/en/home/motels.fl.lake-city.9763.html

Vista Verde Farm Retreat 🐾 V E
vistaverdefarmretreat.com

MONTICELLO

1872 Denham Inn 🐾 BB D
johndenhamhouse.com

OLD TOWN

Suwannee Gables Motel & Marina 🐾 🏊 H W
suwanneegables.com

PERRY

The American Dream Vacation Rentals 🏊 V W
theamericandreamvacationrentals.com

QUINCY

Whippoorwill Sportsman's Lodge V W
fishthewhip.com

SUWANNEE

Bill's Fish Camp, Motel, & Campground H
billsfishcamp.com

TALLAHASSEE

Aloft Tallahassee Downtown 🏊 H D
alofttallahassee.com



Visit Tallahassee



Levy County Visitors Bureau and Visitor Information Center



Santa Fe Palms RV Resort

Visit Natural
NORTH FLORIDA

Nature is Our Theme Park

Natural North Florida, Florida's original gem, offers abundant natural beauty and Southern charm. Explore quaint towns, the world's largest natural spring collection, superb sport fishing, tranquil rivers, and Florida's finest state parks. With rolling hills, fewer crowds, and no palm trees, it redefines Florida stereotypes. Discover crystal-clear streams by day and excellent dining and entertainment by night. Experience modern amenities blended with traditional charm. Whatever adventure you seek—paddling, hiking, bicycling, birding, fishing, or scalloping—you'll find it in Natural North Florida, where Nature is our Theme Park.

NaturalNorthFlorida.com

NORTH FLORIDA TRAILS
a Trail for Everyone
Hiking. Dining. Biking. Shopping. Paddling

SCAN TO START EXPLORING



Unlock Your Adventure
Taylor County, FL

Keaton Beach
Explore our unspoiled coastlines, dine at one of our coastal seafood restaurants

Steinhatchee
Your adventure awaits...
Fishing, kayaking, scalloping, swimming

Perry
Enjoy one of our many cultural events and festivals as well as shopping downtown at one of our many boutiques

Unlock Your Adventure...
TaylorFlorida.com

More to Explore

IN LEVY COUNTY, FL



LAI D BACK IN LEVY



www.VisitLevy.com

Photo by Bonish Photography



DIXIE COUNTY TRAILS

Florida's Hidden Coast



VISITDIXIE.COM

Welcome to
Gilchrist County
Springs Capital
of the World

VisitGilchristCounty.com

RETREAT TO Vintage FLORIDA

MADISON
COUNTY
FLORIDA



VISITMADISONFL.COM



the heart of natural florida



www.VisitSuwannee.com

Fun

is in our nature.



Explore
Wakulla



The Natural Place to Be in Florida

Florida's



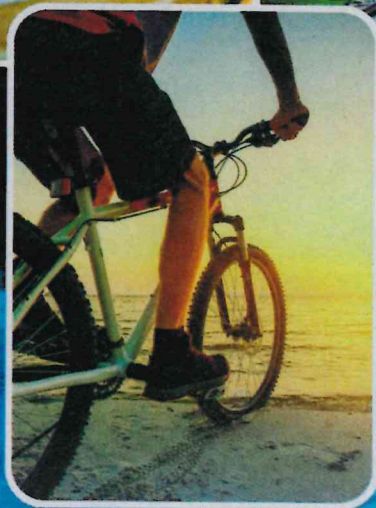
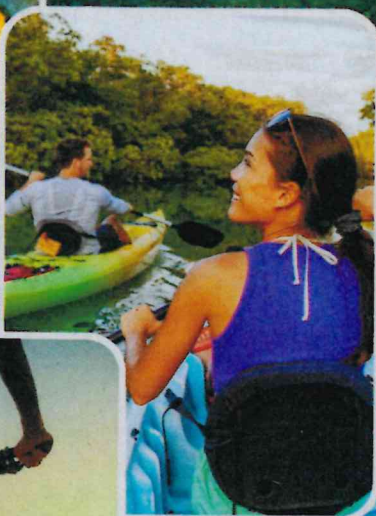
FREE!

The Hidden Coast

OUTDOOR RECREATION | LODGING | RESTAURANTS | SHOPPING | REAL ESTATE

January 2026

The Last of Old Florida



A Journey
for the Senses

STARTING ON
PAGES 6-7



SCAN TO START EXPLORING

NORTH FLORIDA TRAILS

a Trail for Everyone

Hiking, Dining, Biking, Shopping, Paddling

Citrus Springs Oasis

Located in Citrus Springs Florida

4 beds 2 baths

15 minutes to Crystal River where you can swim with the manatees.
10 miles from Rainbow River in Dunnellon.

You can find us on Airbnb and VRBO



www.oldfloridafishcampck.com

Opening October 1, 2025

Newly renovated rooms, full kitchen,
waterfront cabins, kayak launch, hot tub

All amenities included with your stay!

- Kayaks & Paddle Boards
- Beach Cruiser Bicycles
- Golf Cart



12685 SR 24
Cedar Key, FL 32625

(352) 502-7800
oldfloridafishcampck@gmail.com



LAID BACK IN LEVY

www.visitlevy.com

 @visitlevycounty  @levycountyvisitorsbureau

Refined Relaxation. Endless Horizons. Gulf Coast Living.

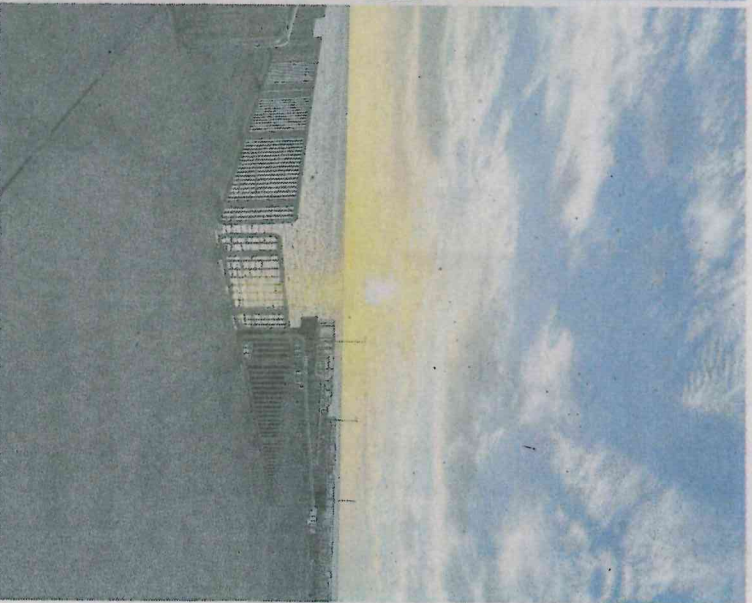


Photos by Bonish Photography

2ND PLACE CHILI (JUDGE SELECTION) \$50
 3RD PLACE CHILI (JUDGE SELECTION) \$25
 PEOPLE'S CHOICE CHILI (ATTENDEE VOTE) \$25
 BEST CORNBREAD (ATTENDEE VOTE) \$25

CHILI AND CORNBREAD ENTRIES RECEIVED AT MARKER 29
 9:45-10:45 AM. NO LATE ENTRIES ACCEPTED.
 TASTING AND JUDGING AT 11 AM.
 WINNERS ANNOUNCED AT 1 PM.

FOR MORE DETAILS CONTACT OWEN PRINCE @ 229-300-3707
SPONSORED BY THE SUWANNEE TOWN
CHAMBER OF COMMERCE



Levy County Visitors Bureau

VisitLevy.com

Photos by: Highway 40 Boat Ramp-Shore Builders, Airboat-Bonish Photography & Big Dock-Living Cedar Key



♥ Astoria Column ♥ Lincoln Motor Court ♥ Forever Marilyn

AMERICAN ROAD

VOLUME XXIII NUMBER 4



US \$7.95
CAN \$7.95



ROUTE 66 CENTENNIAL

♥ The Mother Road Turns 100

Display in Travel Through March 2026

WIN a \$100 GAS CARD from AMERICAN ROAD!

An outdoor adventure every day



There's no better place to explore the great outdoors than in White County. With over 20 area waterfalls, 7 wineries, 2 State Parks and Georgia's newest Historic Site - Hardman Farm, every day is an adventure. We also offer excellent hiking, biking, zip-lining, tubing, kayaking, golf, annual events throughout the year and much more.



Alpine Helen

Sautee Nacoochee - Cleveland & Unicoi State Park

800-858-802 www.HelenGa.org

Alpine Helen-White County Regional Visitor Center
726 Bruckenstrasse, Helen, GA 30845



[AlpineHelenWhiteCountyCVB](https://www.facebook.com/AlpineHelenWhiteCountyCVB)

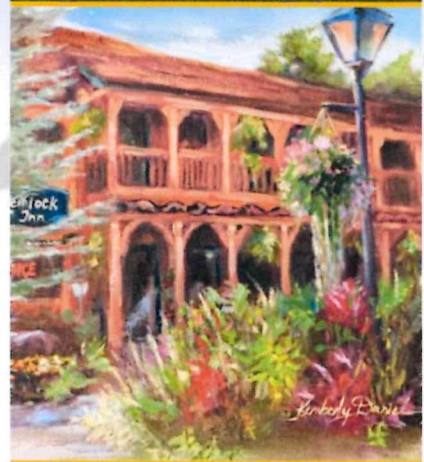
[AlpineHelenGa](https://www.facebook.com/AlpineHelenGa)



Hemlock Inn



A Blowing Rock Tradition



HemlockInn.net

828-295-7987

134 Morris Street
Blowing Rock, North Carolina



LAID BACK IN LEVY

www.visitlevy.com

[@visitlevycounty](https://www.instagram.com/visitlevycounty)

[@levycountyvisitorsbureau](https://www.facebook.com/levycountyvisitorsbureau)

Refined Relaxation. Endless Horizons. Gulf Coast Living.



Photos by Bonish Photography



The Answer to "Are We There Yet?"

paperpie
brand partner

L13115.paperpie.com

Rebecca Repp, brand partner

AMERICAN ROAD SALUTES Our ADVERTISERS...

THE OFFICIAL 2026 FLORIDA RV PARK & CAMPGROUND DIRECTORY

camp florida

A white silhouette of an RV is positioned inside a circular frame with radiating lines, resembling a sunburst, located to the right of the word 'camp' in the title.

**PLANNING INFO ON
OVER 375 RV PARKS,
CABINS & OUTDOOR
RENTALS**

Let us help you plan the
perfect getaway.

PROUD PARTNER OF

VISIT FLORIDA

MAP #

ALACHUA

1 TRAVELER'S CAMPGROUND

17701 April Blvd., Alachua 32615
 travelerscampground.com



386-462-2505
 Total Sites 160

Traveler's Campground in Alachua boasts 160 sites, full hookups, pull-thrus, free Wi-Fi, Cable, shaded dog park, pool, laundry, propane and a camp store. Guests love the friendly staff, rescue animals and proximity to Gainesville, making this a clean, quiet and pet-friendly stop near I-75.

BRANFORD

2 RIVERS CROSSING RV RESORT

7568 US Hwy. 27, Branford 32008
 riverscrossingrv.com



386-266-9087
 Total Sites 50

We are a family-owned/operated campground nestled on 20-acres in the heart of the Suwannee River area. At our resort, we take pride in providing a welcoming and personalized camping experience for families. Our amenities include a dog park, laundromat, restroom, bike trails and planned activities.

BRONSON

3 BLACK PRONG

450 S.E. CR 337, Bronson 32621
 blackprong.com



352-486-1234
 Total Sites 28

Beautiful cabins, luxury Tiny Homes, Airstreams and horse stalls for rent and RV and camping spots with full hookups. All prime RV pads have cobblestone pavers with a cookout area. Our level, grass RV pads are conveniently located near the bathhouse, laundry and pool area. Dine at the onsite Black Prong Bar & Grill!

CALLAHAN

4 KELLY'S COUNTRYSIDE RV PARK

36065 Kelly's Ln., Callahan 32011
 kellyscountrysidepark.com



904-845-4252
 Total Sites 67

Come enjoy unspoiled natural surroundings and immaculate amenities at our lovely RV park. Located 25 miles from Amelia Island and Fernandina Beach. See the amazing wildlife in the surrounding woods. We offer a friendly hospitality and relaxed atmosphere in quiet and restful surroundings.



**LAI D BACK
 IN LEVY**

www.visitlevy.com

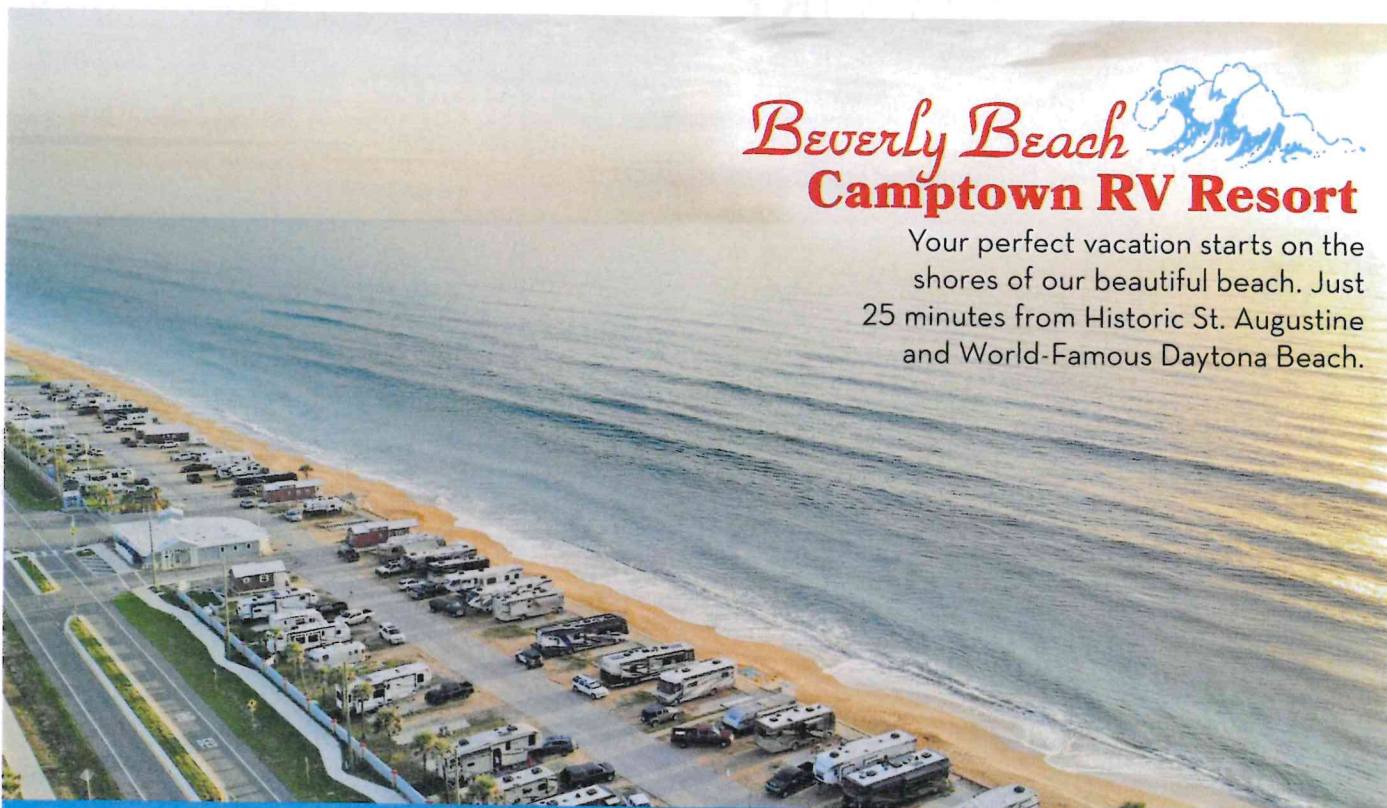
@visitlevycounty

@levycountyvisitorsbureau

Refined Relaxation. Endless Horizons. Gulf Coast Living.



Photos by Bonish Photography



Beverly Beach
Camptown RV Resort

Your perfect vacation starts on the shores of our beautiful beach. Just 25 minutes from Historic St. Augustine and World-Famous Daytona Beach.

**2815 N. Oceanshore Blvd.,
 Flagler Beach**

**386.439.3111
 beverlybeachcamptown.com**

SYMBOL KEY: 50 Amp Service; Waterfront Sites; Rentals; Tent Sites; Pet-Friendly; Cable/Satellite; Wi-Fi; Pool