



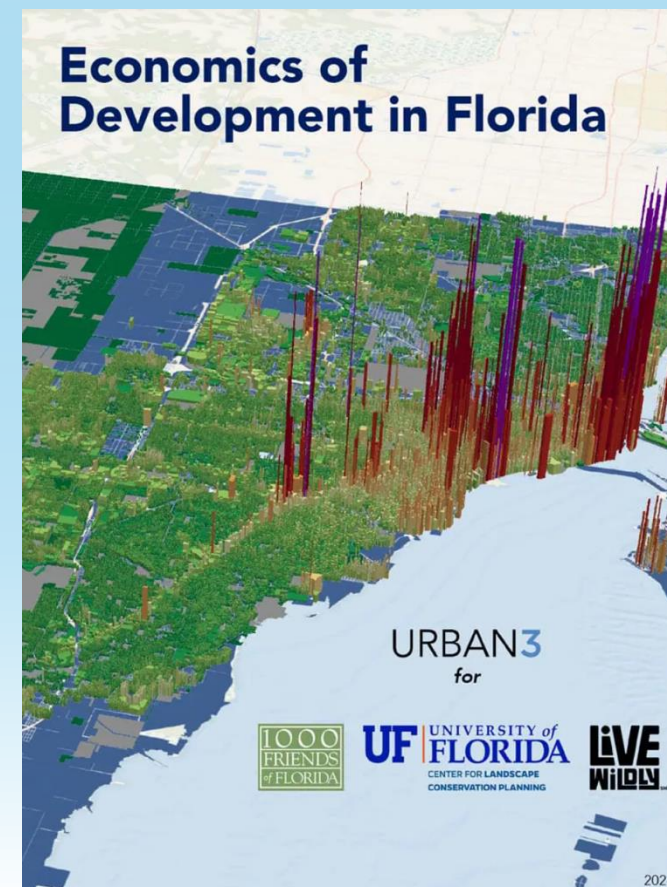
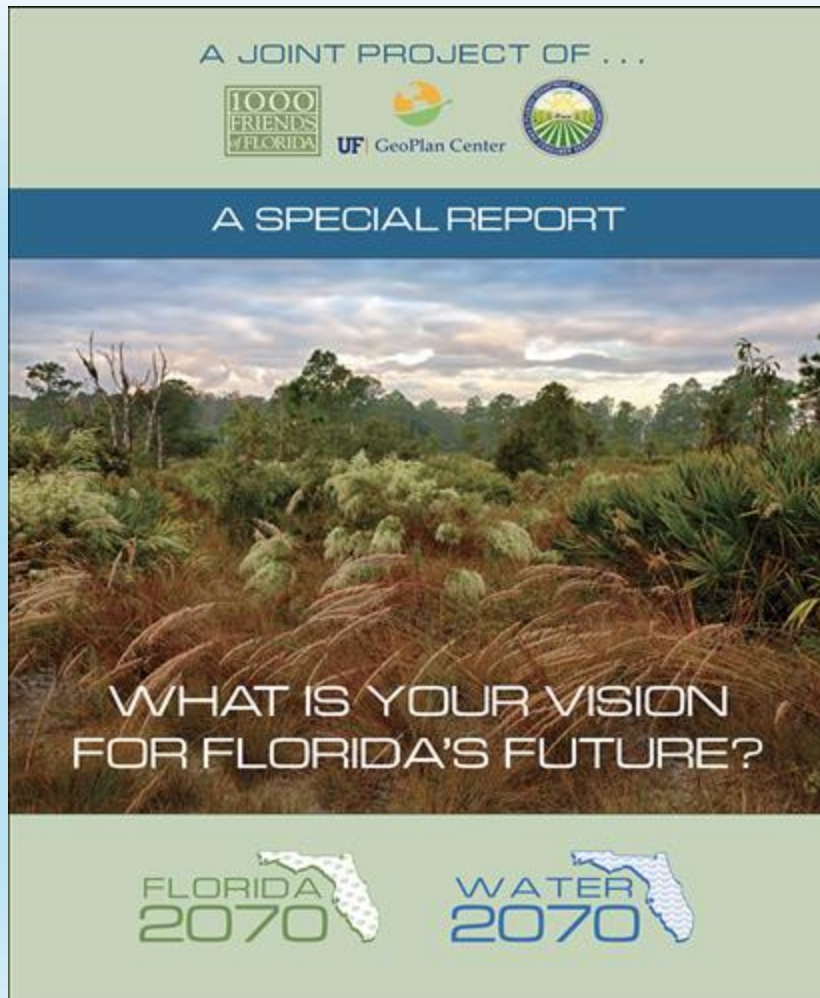
Workshop Presented by 1000 Friends of Florida  
Kim Dinkins, Policy and Planning Director  
10/24/2024



- Florida's leading nonprofit advocate of sustainable development
- Working with citizens, community and state leaders, conservation and business groups
- Building better communities
- Saving special places
- Connecting people with planning

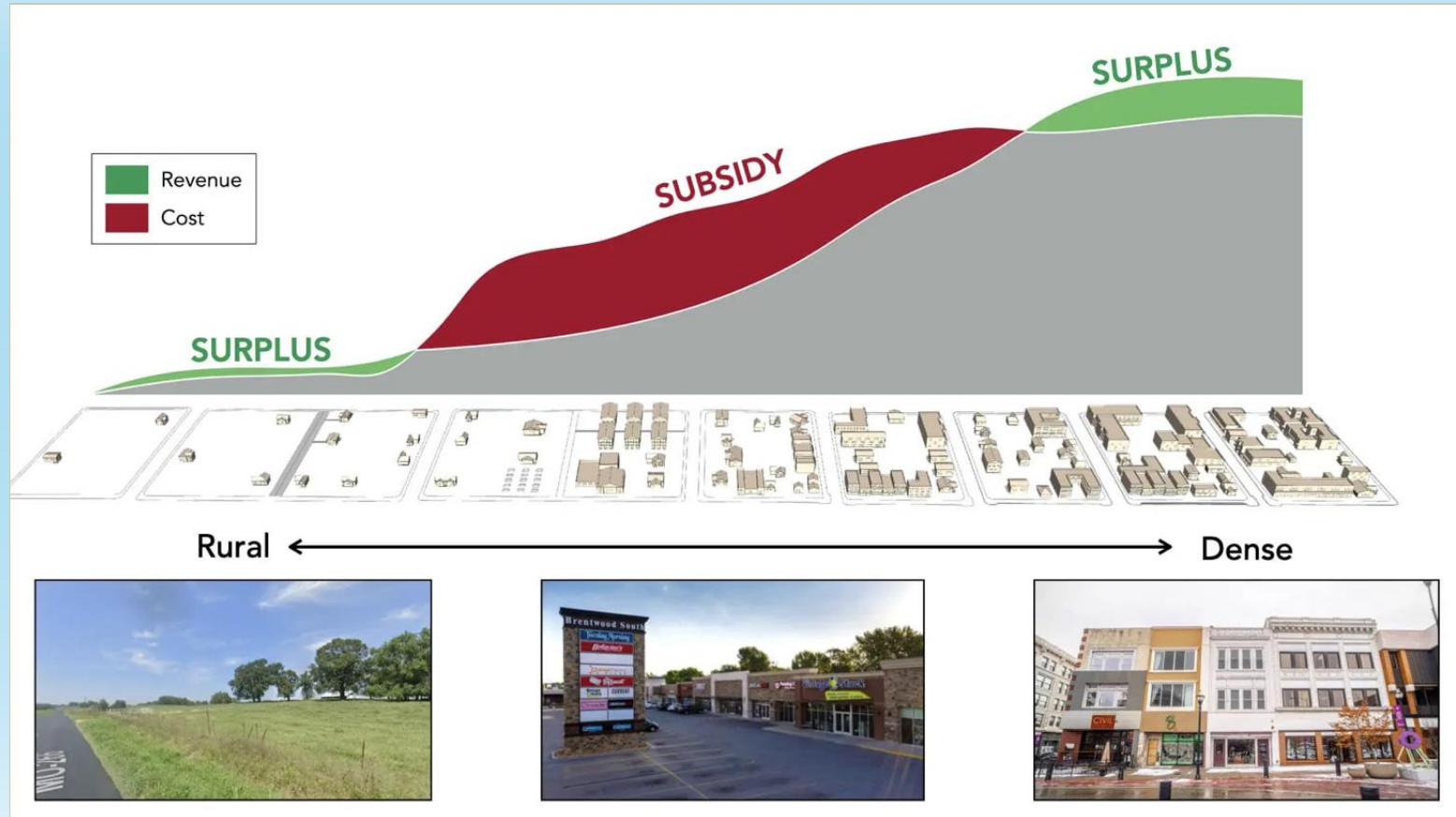
# 1000 Friends' Policy Priorities

- Preserving natural and agricultural land from development
- Restoring and protecting environmental treasures
- Defending the planning process
- Expanding the supply of affordable workforce housing
- Promoting transportation alternatives
- Fighting climate change and preparing for sea-level rise





# Economics of Development in Florida



The approach compares the revenue per acre of development with the short- and long-term costs to communities and their taxpayers providing the infrastructure needed to support it.

# Benefits of Compact Development

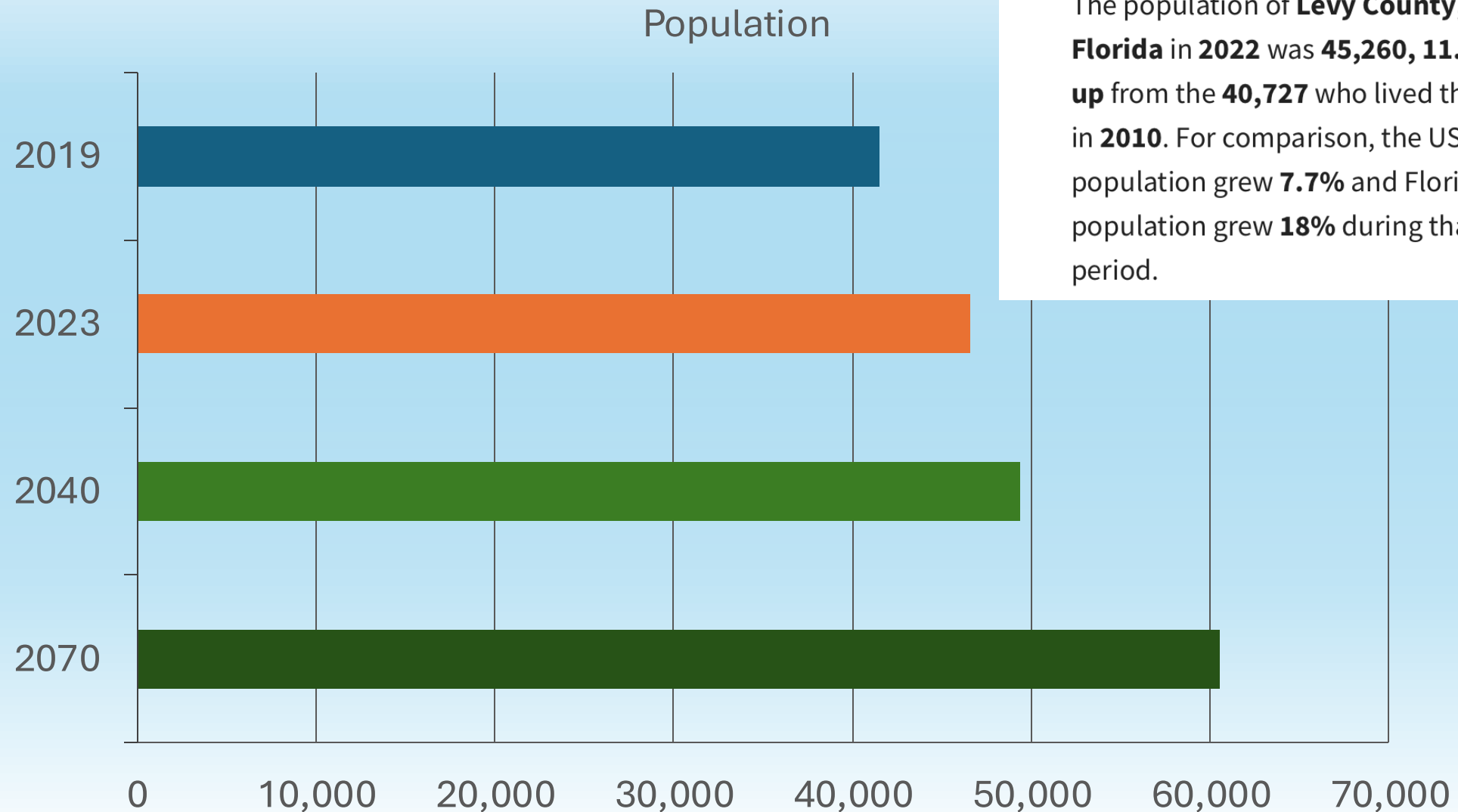
## Williston Main Street: Master Plan *Vision-based Planning Effort*

- Envision Main Street
  - Today
  - Tomorrow
  - Future
- Unify entire community
  - Businesspeople
  - Community members
  - Youth
  - City leadership
  - City staff
- Main Street Initiatives
  - Economy
  - Culture
  - Civic



- Opportunities to walk or bike lead to healthier lifestyles
- More viable transit, less traffic
- Less air, water pollution
- More housing choices
- Lower costs for taxpayers for public services
- More vibrant communities

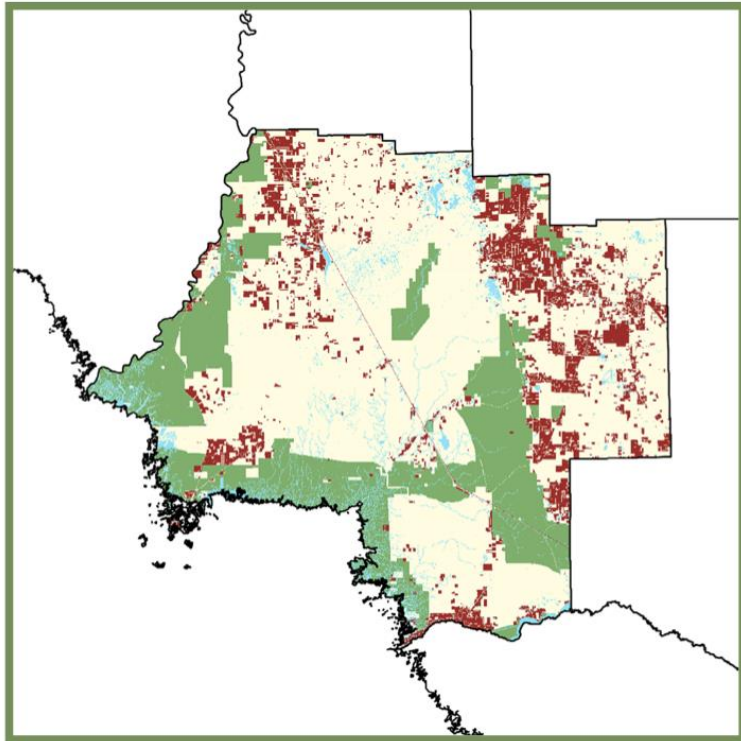
# Levy County's Population



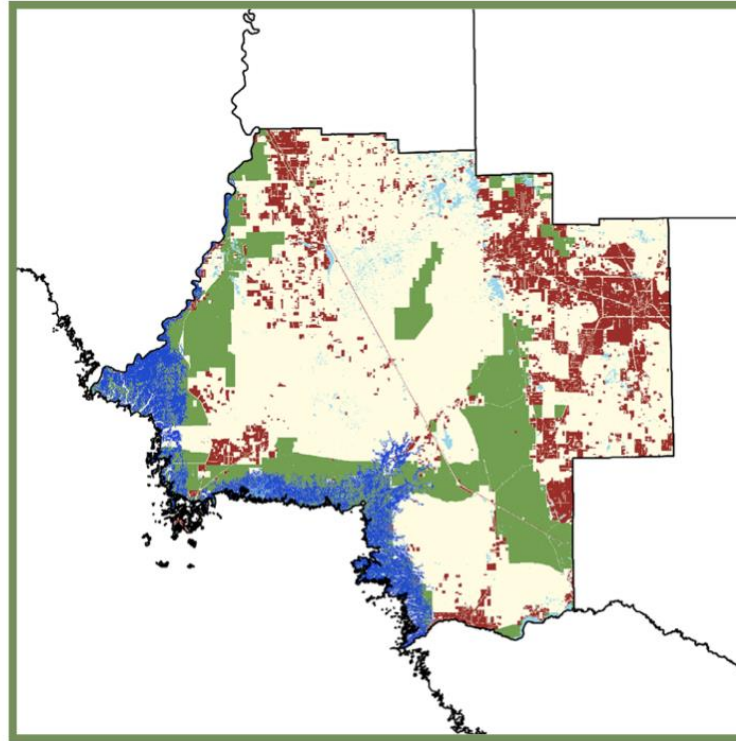
The population of **Levy County, Florida** in **2022** was **45,260**, **11.1% up** from the **40,727** who lived there in **2010**. For comparison, the US population grew **7.7%** and Florida's population grew **18%** during that period.

# Levy County

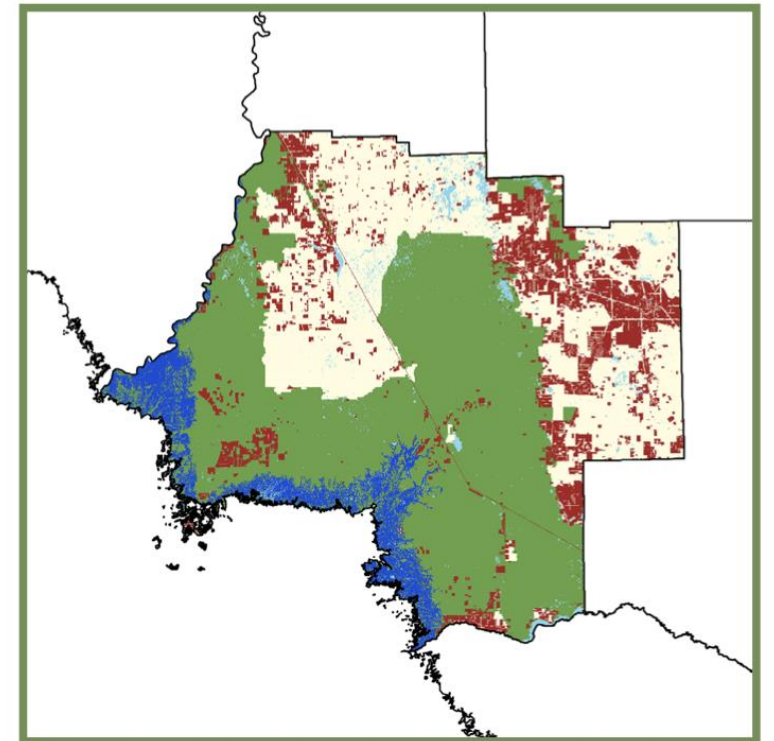
Baseline



2040 Sprawl



2040 Conservation



Developed Protected Sea Level Rise Other

A joint  
project of . . .



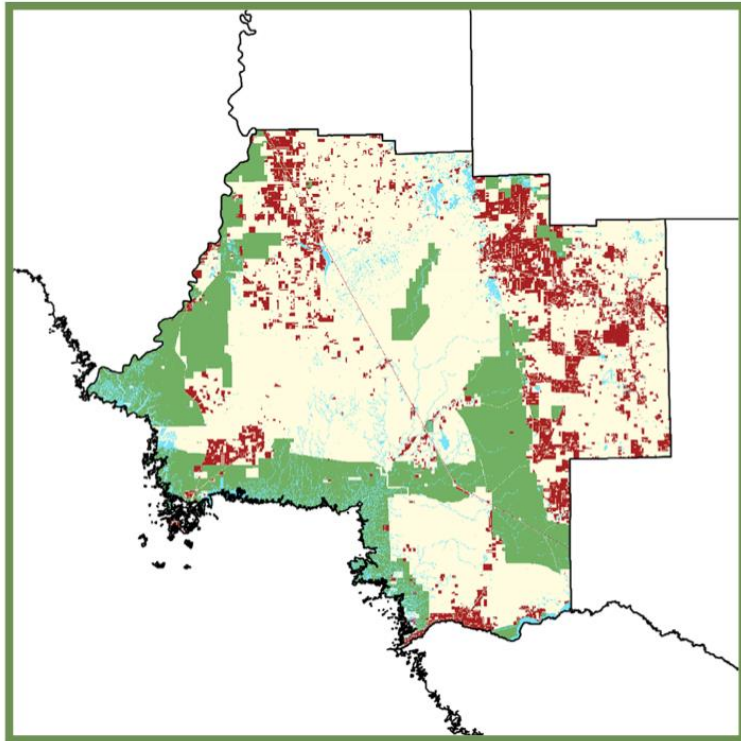
CENTER FOR LANDSCAPE  
CONSERVATION PLANNING



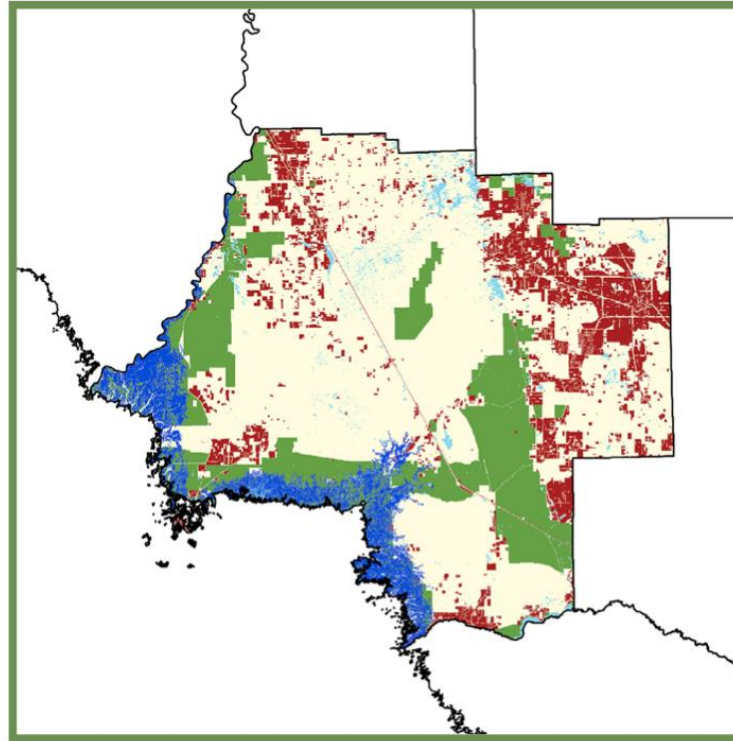


# Levy County

Baseline



2040 Sprawl



■ Developed    ■ Protected    ■ Sea Level Rise    ■ Other

A joint  
project of . . .



CENTER FOR LANDSCAPE  
CONSERVATION PLANNING

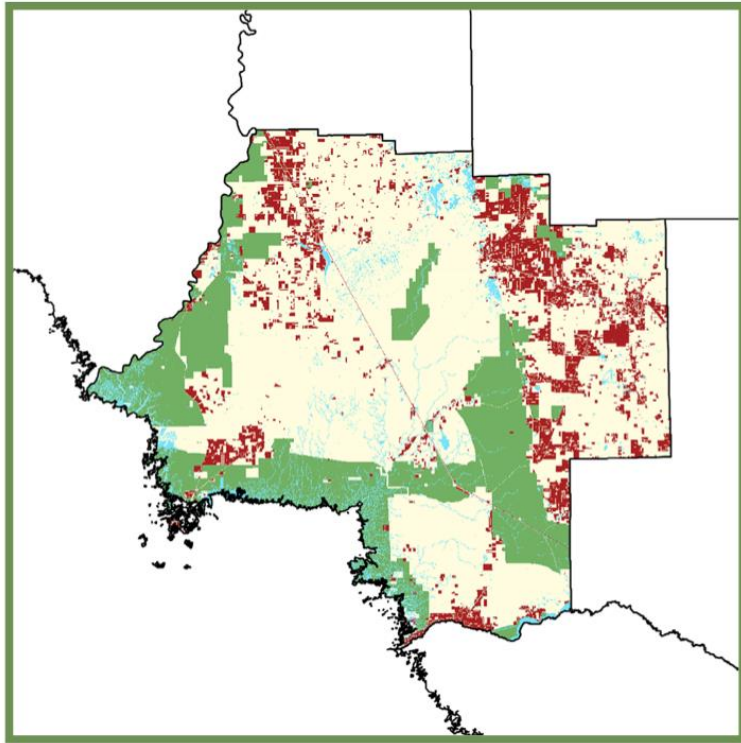
## BUSINESS AS USUAL SCENARIO

- No increased density in existing municipalities.
- No additional lands in conservation.
- 23% of protected Land subject to inundation due to sea level rise.



# Levy County

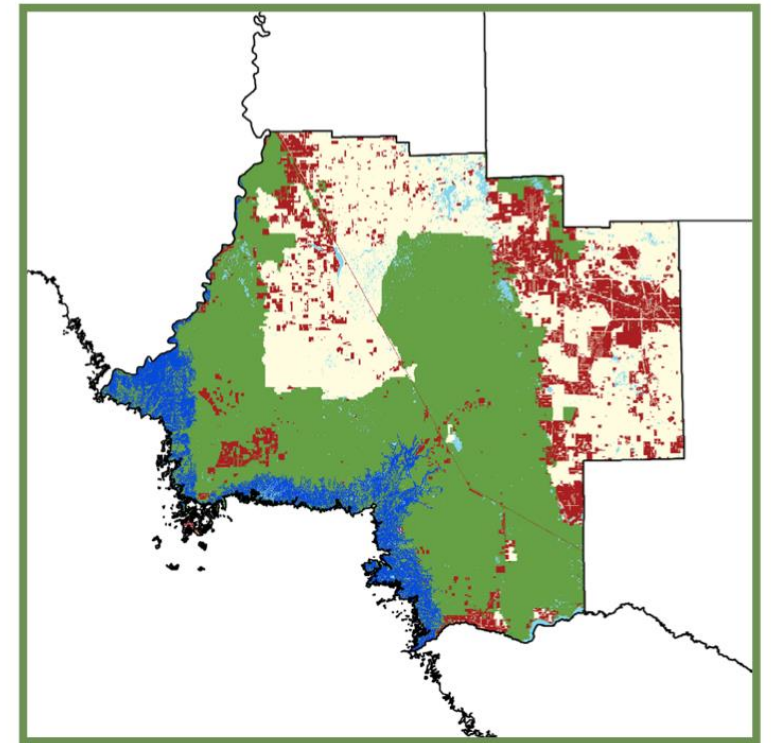
Baseline



## CONSERVATION SCENARIO

- Protected Natural Land= 41.3% (301k acres).
- Developed Land increases by 8,205 acres.
- Opportunities for urban expansion also exist.

2040 Conservation



■ Developed    ■ Protected    ■ Sea Level Rise    ■ Other

A joint  
project of . . .

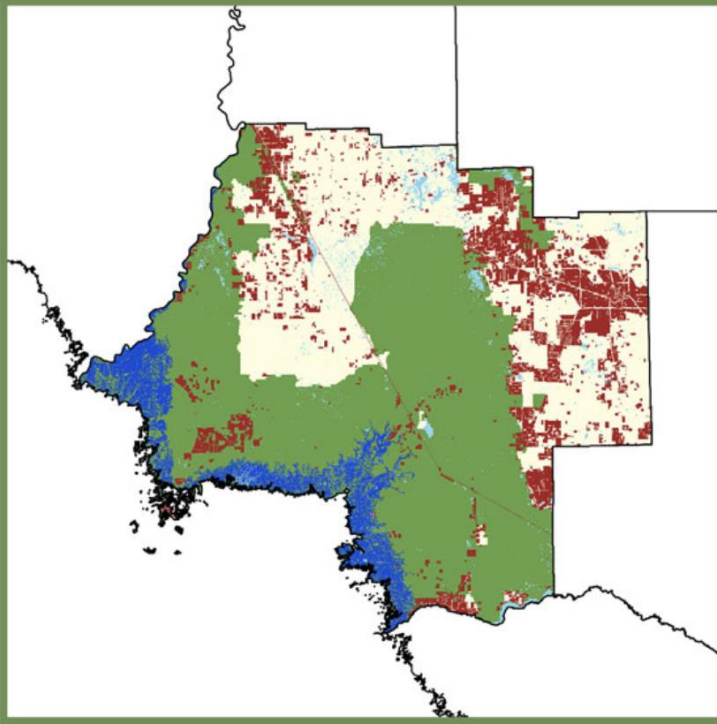


CENTER FOR LANDSCAPE  
CONSERVATION PLANNING

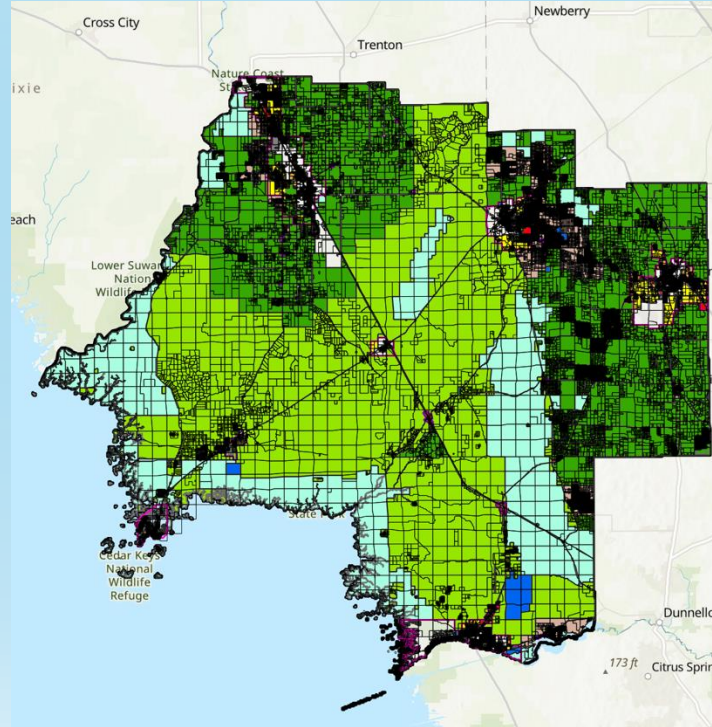




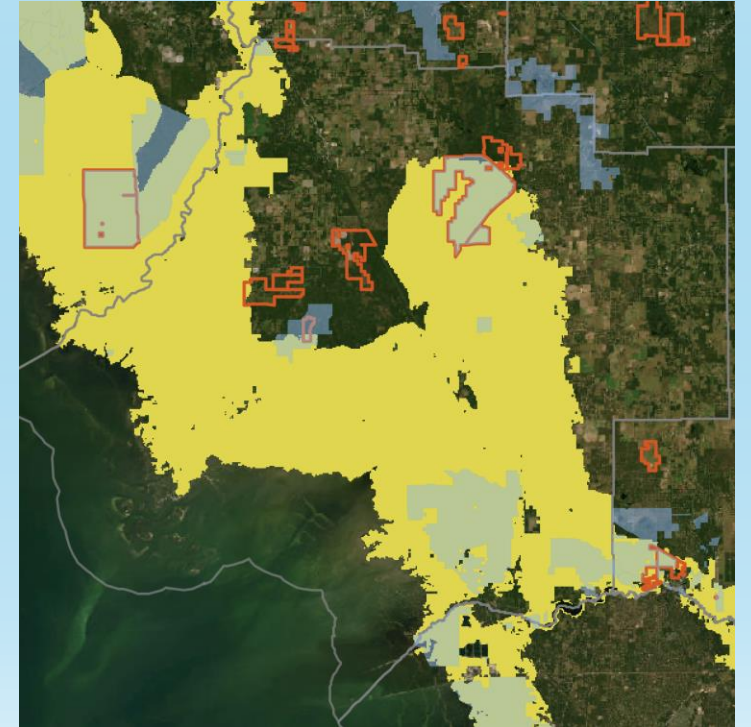
# It's Part of the Plan



Conservation 2040



Levy Future Land Use Map



FL Wildlife Corridor 2021

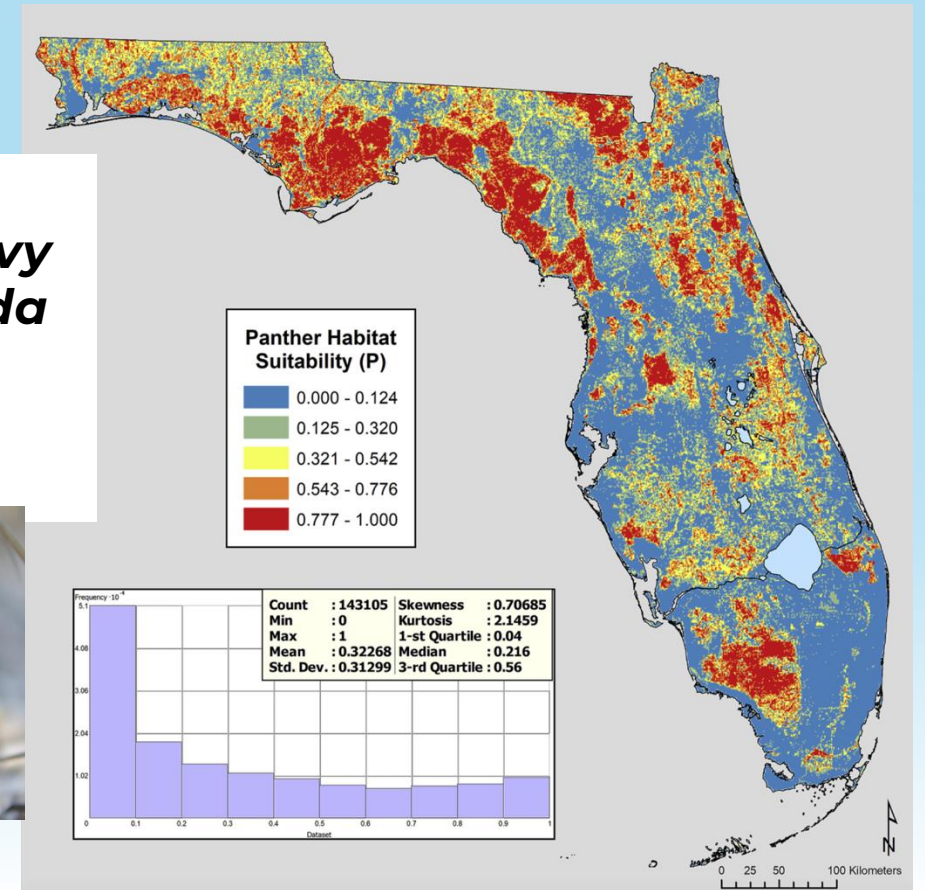
# What is the Florida Wildlife Corridor?

An 18 million-acre network of connected private and public lands that span from the Everglades to the panhandle.



The Nature Conservancy

**-229,313 acres of unprotected land in Levy County are in the Florida Wildlife Corridor Opportunity areas**







How we develop our urban areas can either help to protect or harm rural areas.



# What Can We Do?

## Recommendations for Land Conservation:

- Encourage willing property owners to apply for Florida Forever.
- Encourage willing property owners to implement Conservation Programs (RFLP).
- Establish a local program to leverage federal, state and private funds for fee-simple acquisition.
- Establish standards for coastal development that include adaptation strategies to account for sea-level rise, flooding and other vulnerabilities.



# What Can We Do?

## Recommendations for Development Areas:

- Continue to pursue Main Street designation for downtown areas.
- Discourage development in areas without adequate water and sewer infrastructure by establishing urban service areas.
- Develop an affordable housing strategy.
- Develop a strategy to increase ecotourism and outdoor recreation opportunities.



# Our Next Steps

- Work with UF CFCP to update models.
- Continue to engage with Levy residents and decision makers.
- Evaluate existing plans and options for smart growth policies (Levy County 2026 Comp Plan Updates and Envision Williston).







[www.1000fof.org](http://www.1000fof.org)