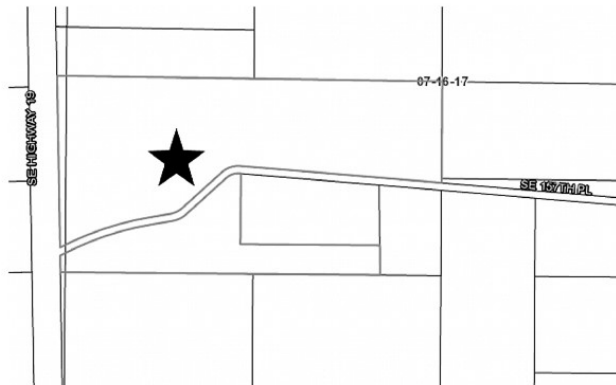


LEVY COUNTY PLANNING COMMISSION

A public hearing on each petition as described below will be conducted by the Levy County Planning Commission on Monday, October 4, 2021 at 5:30 p.m. or as soon thereafter as the matter may be heard during the course of action. The hearing will be held in the Levy County Government Center Auditorium, 310 School Street, Bronson, Florida. The Planning Commissioners are not bound to consider the petitions in the order listed in this notice. Any of these petitions maybe considered as soon as the meeting commences.

A public hearing on each petition as described below will be conducted by the Levy County Board of County Commissioners on Tuesday, October 19, 2021 at 9:00 a.m. or as soon thereafter as the matter may be heard during the course of action. The hearing will be held in the Levy County Government Center Auditorium, 310 School Street, Bronson, Florida. The Board of County Commissioners are not bound to consider the petitions in the order listed in this notice. Any of these petitions maybe considered as soon as the meeting commences.

PETITION NO. PP 21-02: R & R Holdings LLC, Romain and Rachel Spell, petitioning the Planning Commission for a Preliminary Plat of R & R Acres. Proposed subdivision is located in Section 7, Township 16, and Range 17. Has a zoning of ARR/Agricultural Rural Residential (10ac minimum). Said parcel contains 62.20ac MOL and proposed subdivision will create 5 lots containing 10+ac. Parcel Number: 1436501600



Copies of said petitions with complete legal descriptions and subsequent staff reports (if applicable) will be available for review at the Levy County Planning and Zoning Department, (temporary location), 622 East Hathaway Avenue, Bronson, FL. For Information call 352-486-5203. Interested parties may appear at the meeting and be heard regarding the proposed petitions. Any person requiring reasonable accommodations to participate in this meeting should contact the Levy County Commissioners Administration Office at 352-486-5218.