



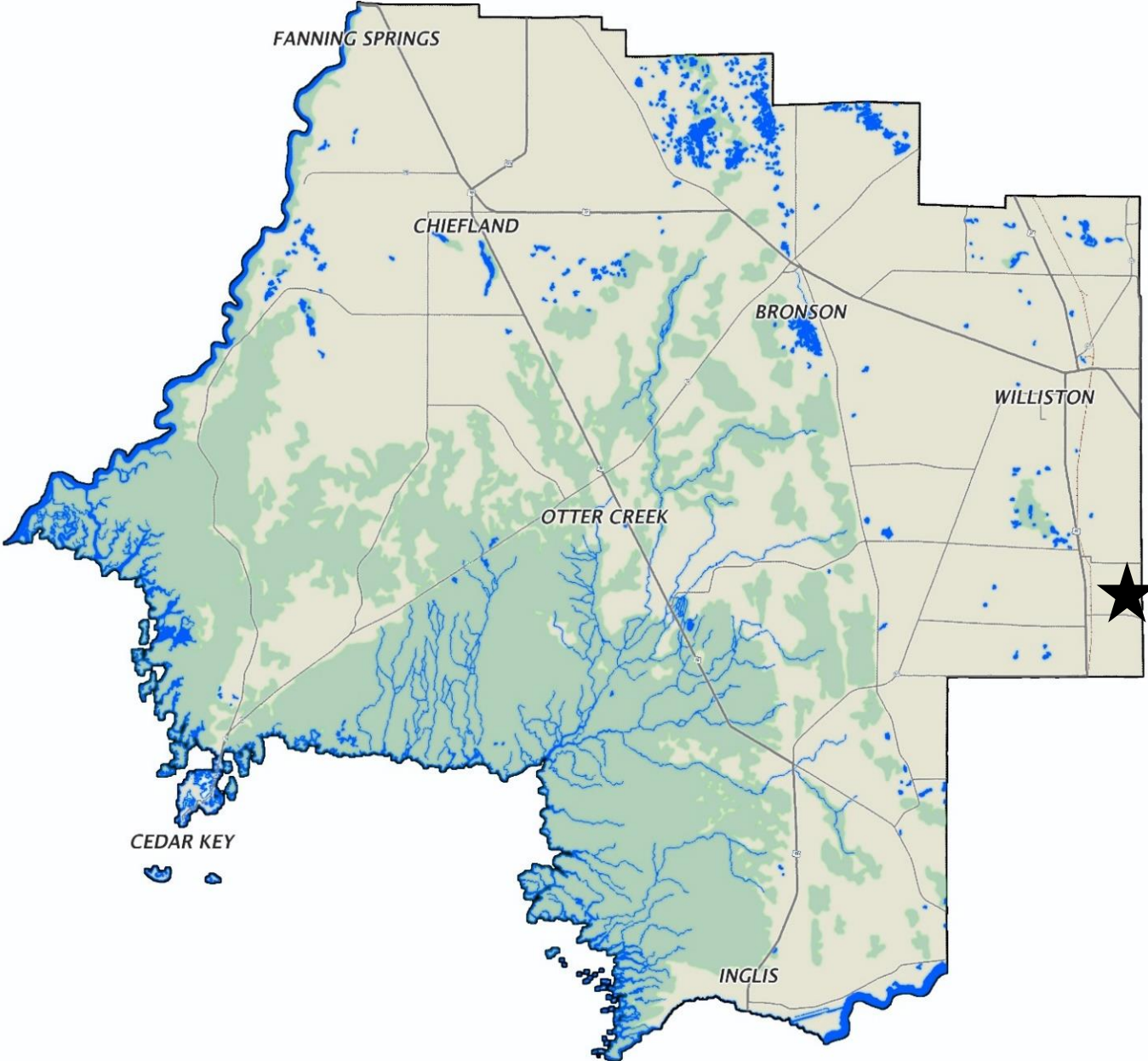
Levy County Planning Commission

Preliminary Replat of Starting Point (Thibodeau)

PP 21-01

October 4, 2021

Location



Aerial Location



M
A
R
I
O
N

C
O
U
N
T
Y

Preliminary Replat Petition Request

- PP 21-01 McMillen Surveying representing John and Elizabeth Thibodeau petitioning the Planning Commission for a Preliminary Plat to Replat Tract 21 of Starting Point. Said parcel is located within Section 16 and 21, Township 14, Range 19 and has a zoning of ARR/Agricultural Rural Residential (10ac minimum). Said parcel contains 24.275ac MOL. Proposed Replat will create two parcels consisting of 12.138ac MOL..
- PID: 18011-000-00

Staff Review

- On September 9, 2021 the Plat Review Committee convened to review the Starting Point Replat. In attendance were the applicant's representative Mr. Steve McMillen, Alice Lalonde from the Road Department, Jenny Rowland and Stacey Hectus from the Planning and Zoning Department. Mr. Lee Mills was not in attendance but did provide comments post meeting.
- All requirements for the replat were satisfied so advertising commenced.

Recommendation and Timeline

- Staff recommends that the Planning Commission review and make a recommendation to the Board of County Commissioners for the Starting Point Preliminary Replat.
- You will see this item again for Final Replat request.

