

# Levy County Commission and School Board 2020 Redistricting



John Gilreath, GISP  
[Jgilreath@drmp.com](mailto:Jgilreath@drmp.com)  
November 16, 2021

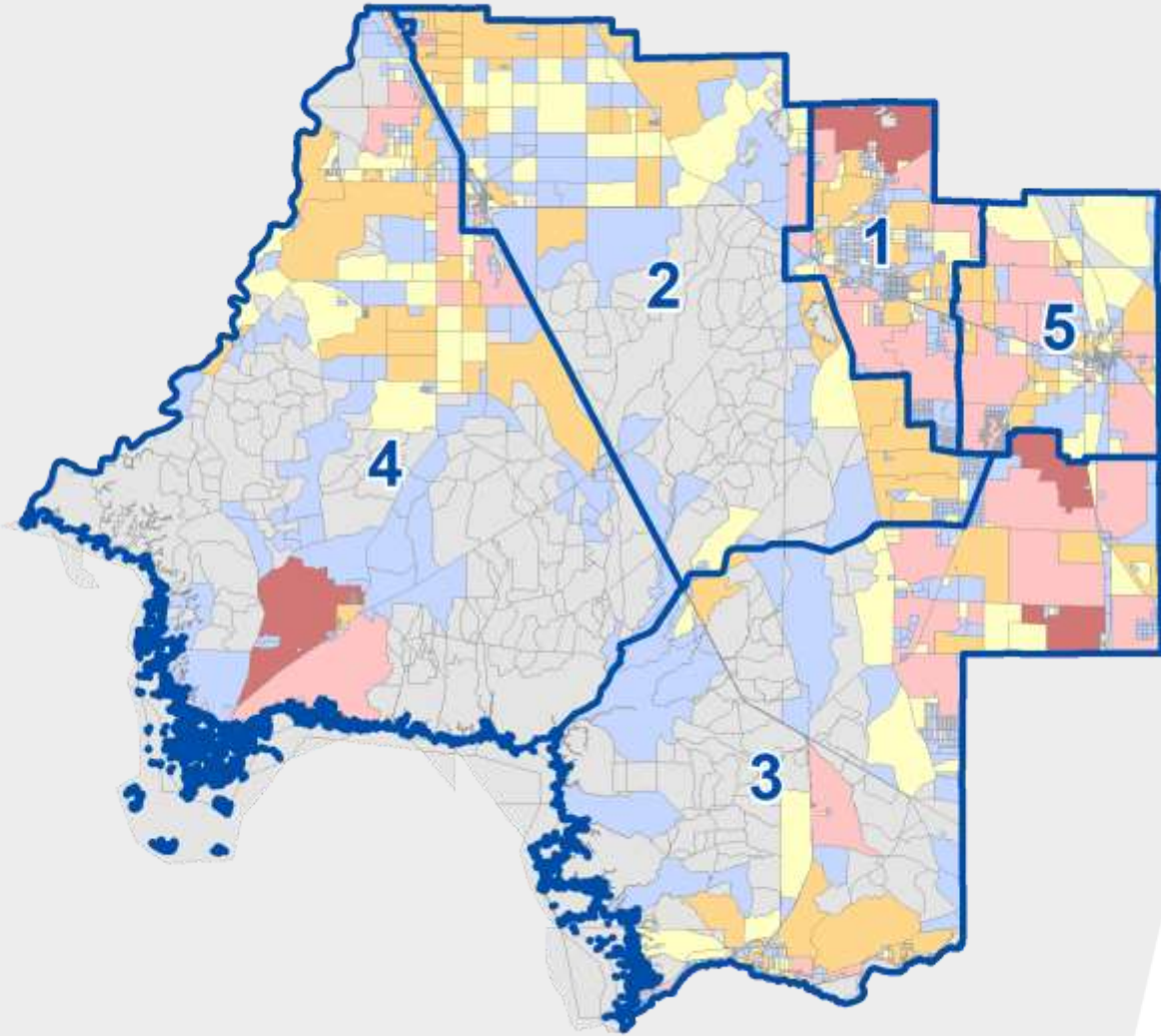
# Levy County Commission and School Board Redistricting

- Coordination with County, the School Board, and the Office of Elections
- **Overall goals for redistricting include:**
  - Review and analyze the changes in population in the 2020 Census data
  - Consider citizen and community official's comments and input
  - Create compact, contiguous, and community districts

# Specific goals for redistricting include:

- **Review and analyze the changes in population in the 2020 Census data**
  - Block, block group, and census tract level
- **Consider citizen and community official's comments and input**
  - 5 public workshops throughout the County
  - School Board and County Commission presentations
- **Create compact, contiguous, and community districts**
  - Provide at least four (4) options to the Community
  - Combine comments for final version for recommendation

## Increase in County Districts 1,3 and 5



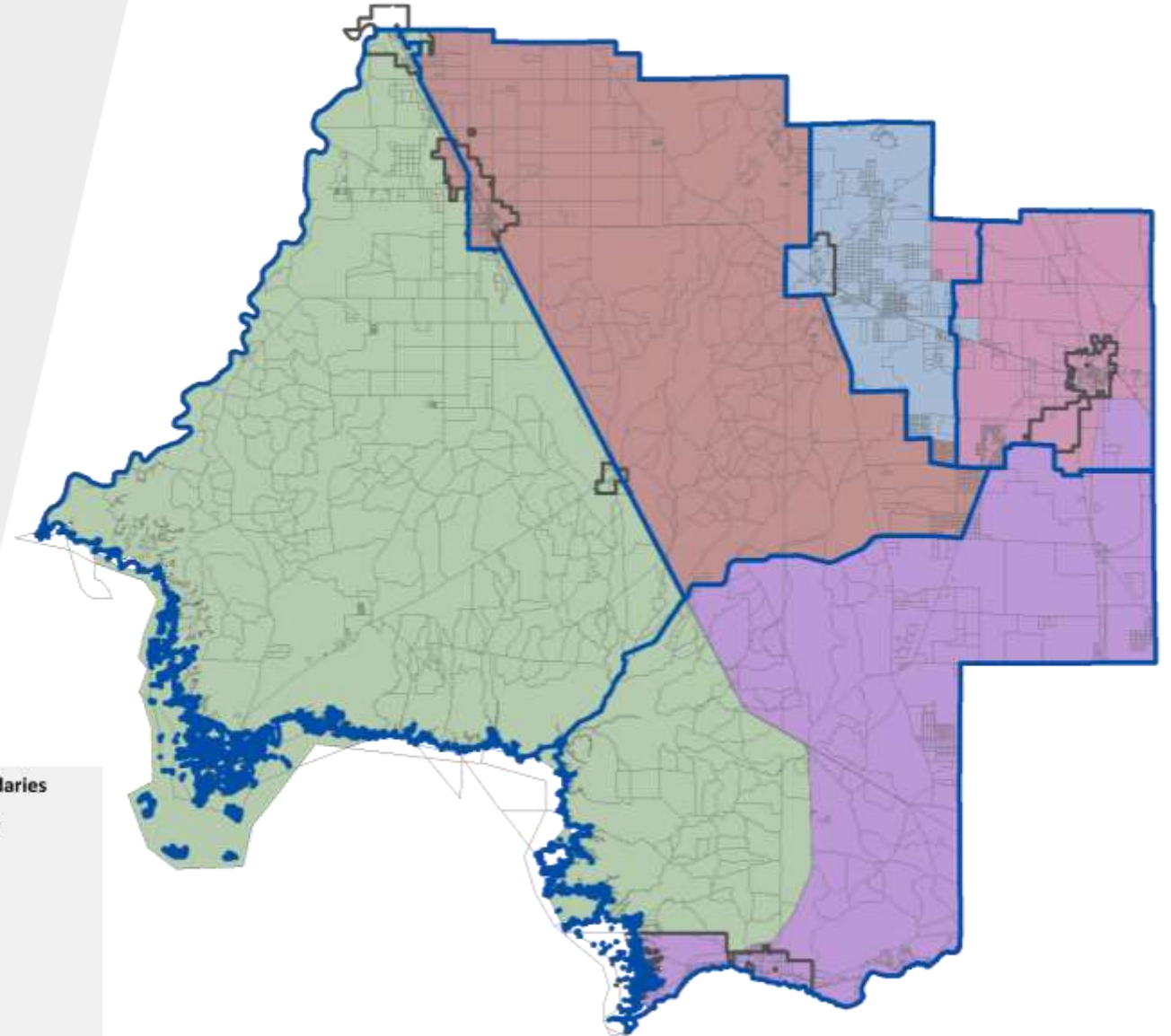
## Levy County 2020 Census Block Data

District	2010 Blocks	2020 Blocks	Change	Pct.
1	8560	9101	541	6%
2	7989	8104	115	1%
3	8097	8678	581	7%
4	8066	8218	152	1%
5	8089	8814	725	9%

# Option A

- Districts 4 and 3 are split at US-19
- Districts 1 and 5 shift
- District 3 expands into 5
- City of Chiefland to Dist. 2
- City of Fanning Springs to Dist. 4

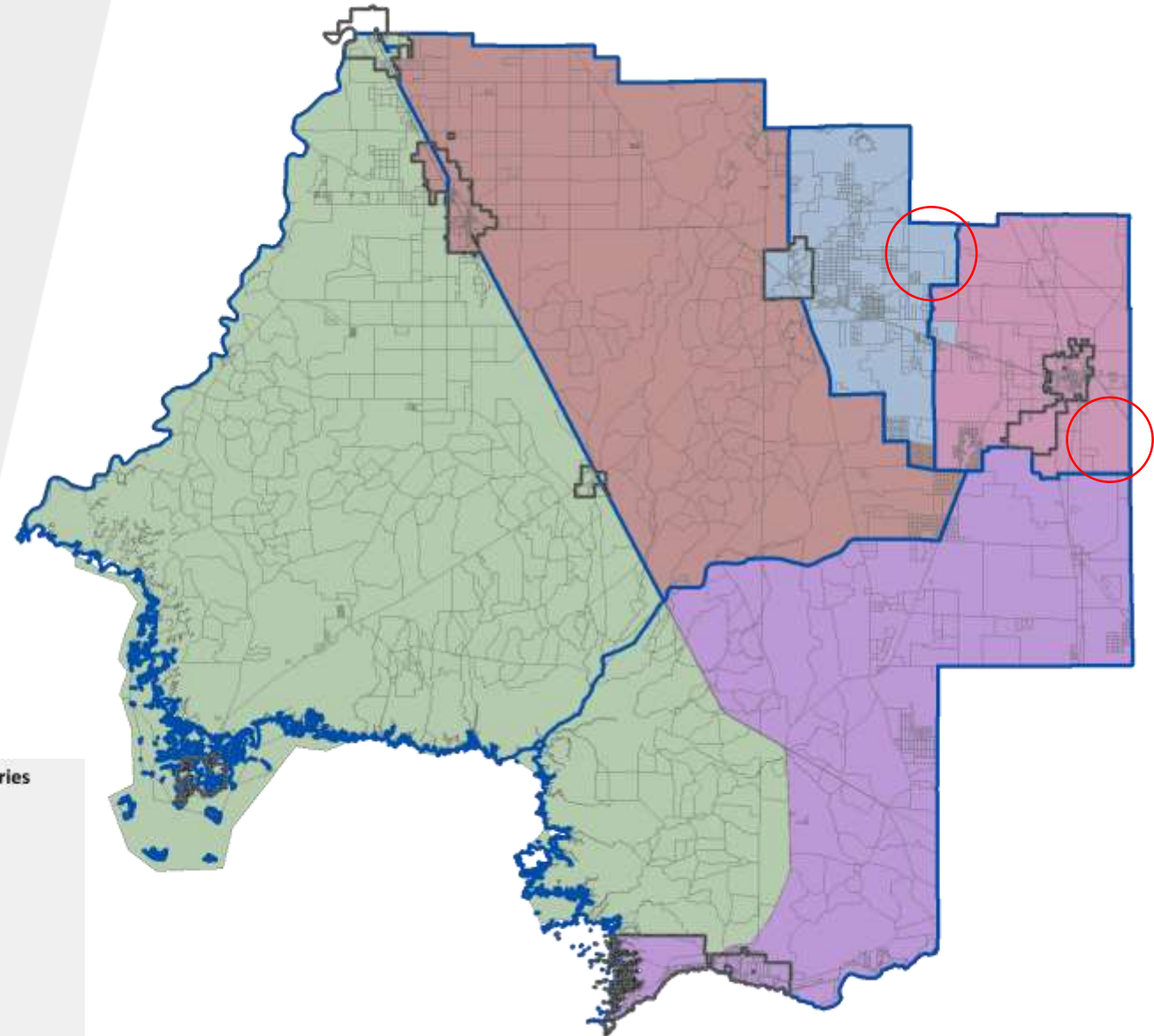
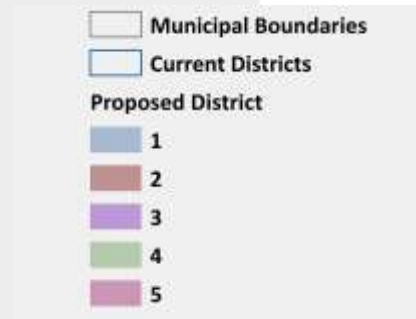
District	Total
1	8663
4	8593
3	8581
5	8579
2	8499



# Option A1

- Portions of Districts 1 and 3 revert back to original (circled in red)
- City of Chiefland to Dist. 2
- City of Fanning Springs to Dist. 4

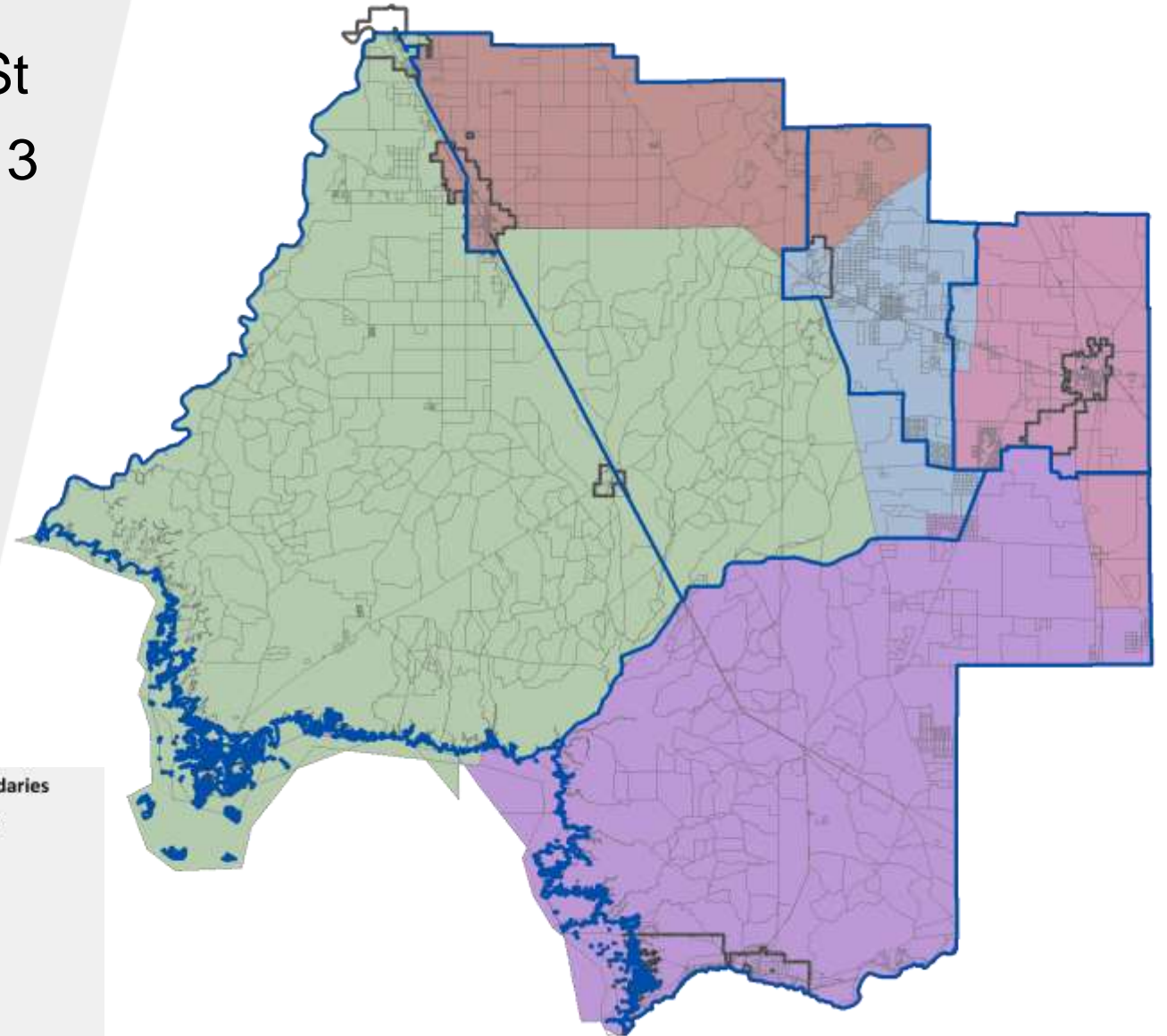
District	Total
1	8951
4	8593
5	8556
2	8499
3	8316



# Option B

- District 2 expands to SR 24
- District 1 expands south to SE 30<sup>th</sup> St
- District 5 expands south into District 3
- City of Chiefland to Dist. 2
- City of Fanning Springs to Dist. 4

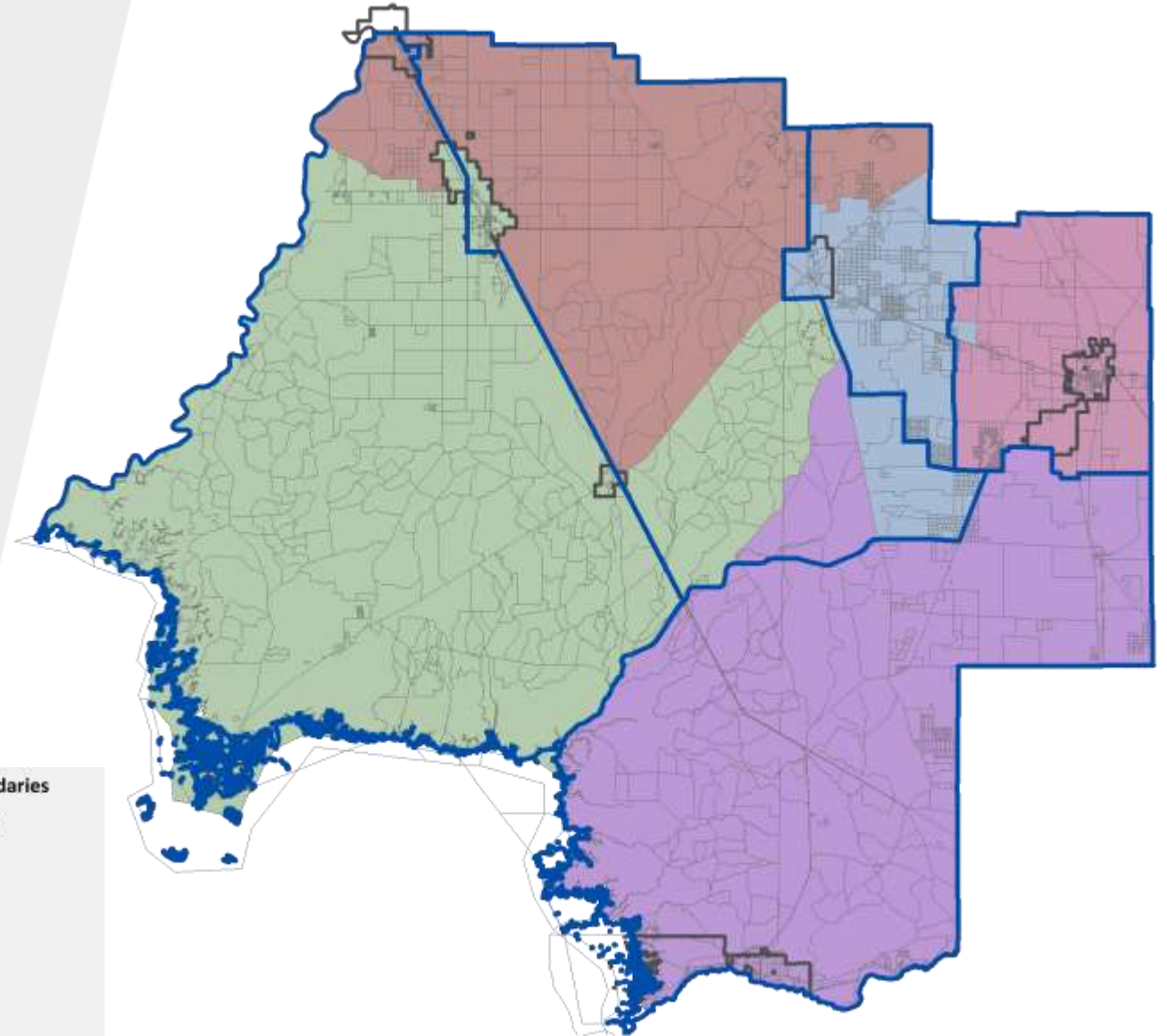
District	Total
5	8676
4	8649
2	8554
1	8533
3	8503



# Option C

- Dist. 2 expands west of US-19
- District 2 expands east to SR-24
- Dist. 4 crosses US-19 to Bronson
- City of Chiefland to Dist. 4
- City of Fanning Springs to Dist. 2

District	Total
3	8721
1	8629
2	8608
5	8556
4	8401

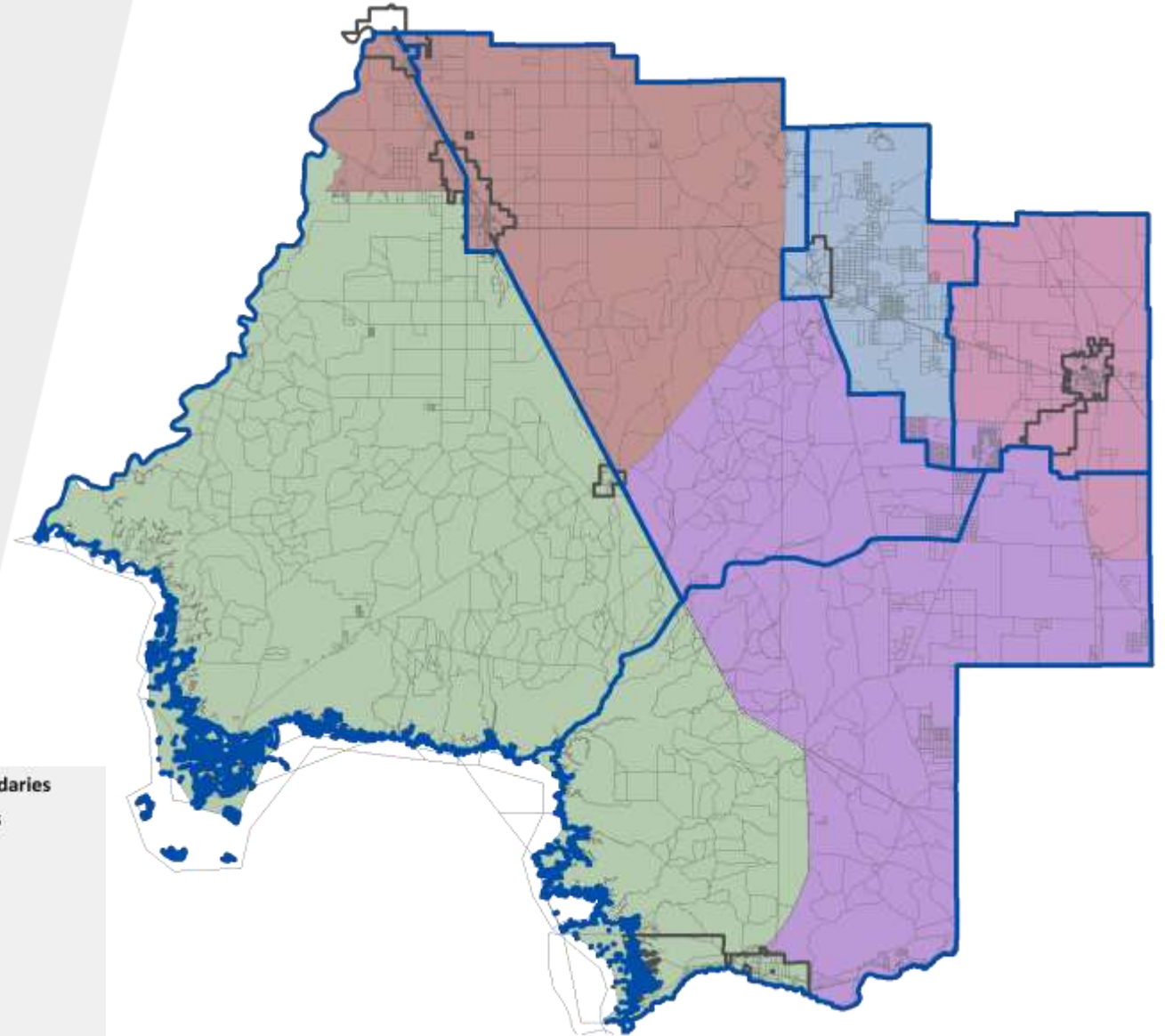




# Option D

- Dist. 2 expands west of US-19
- District 2 expands east to SR-24
- Dist. 4 crosses US-19 to Bronson
- City of Chiefland to Dist. 2
- City of Fanning Springs to Dist. 2

District	Total
1	8663
4	8593
3	8581
5	8579
2	8499



# Next Steps

4 Final reading and recommendation in mid-December

3 Anticipated second readings in mid-November

2 First Reading scheduled for County and School Board

1 Gather input from the public and elected officials

# Levy County Redistricting Public Workshops

Board staff will be holding five public community meetings to consider community input on alternative district maps. Citizens are invited to attend whichever meeting is best for them. All meetings will begin at 6:00 pm and will each be one-hour long. Please call **352-486-5218, ext. 2** if you need more information.

Date/Time	Location	Address
Monday, October 11, 2021 – 6:00 PM	Rosewood Baptist Church	6331 SW 98 <sup>th</sup> Terrace Cedar Key, FL 32621
Monday, October 18, 2021 – 6:00 PM	Inglis Community Center	137 Hwy 40 W Inglis, FL 34449
Monday, October 25, 2021 – 6:00 PM	Tommy Usher Center	506 SW 4 <sup>th</sup> Ave Chiefland, FL 32626
Monday, November 1, 2021 – 6:00 PM	Williston Municipal Complex	50 NW Main Street Williston, FL 32696
Monday, November 8, 2021 – 6:00 PM	Levy County Government Center	310 School Street Bronson, FL 32621

# Recommendations to Board

- Requirements to adopt a redistricting ordinance include a legal description of the new districts and public advertisements
- Final Reading to occur in mid-December Board Meeting
- Recommend the Board identify the preferred option through a motion tonight