



ERIN L. DEADY, P.A. 



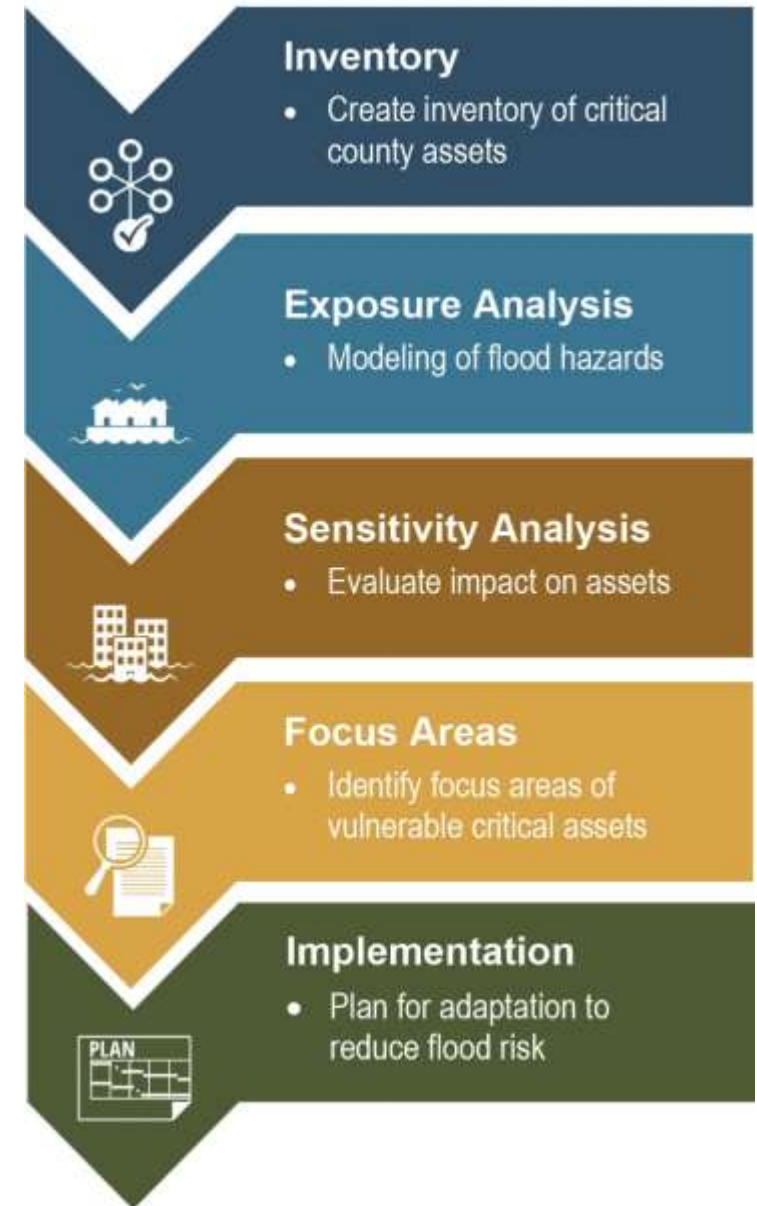
Levy County Comprehensive Vulnerability Assessment

Summary of Study and Path Forward toward Adaptation

May 20, 2025

Project Overview

- Study Commenced in January 2024
- 100% Funded by FDEP
- Assembled Critical Assets Data into a Cumulative Spatial Dataset
- Analyzed Assets for Flood Vulnerability
- A Complete VA allows Levy County to apply for Additional State and Federal Funding Programs



Data Collection and Stakeholder Input

Public and Stakeholder Outreach

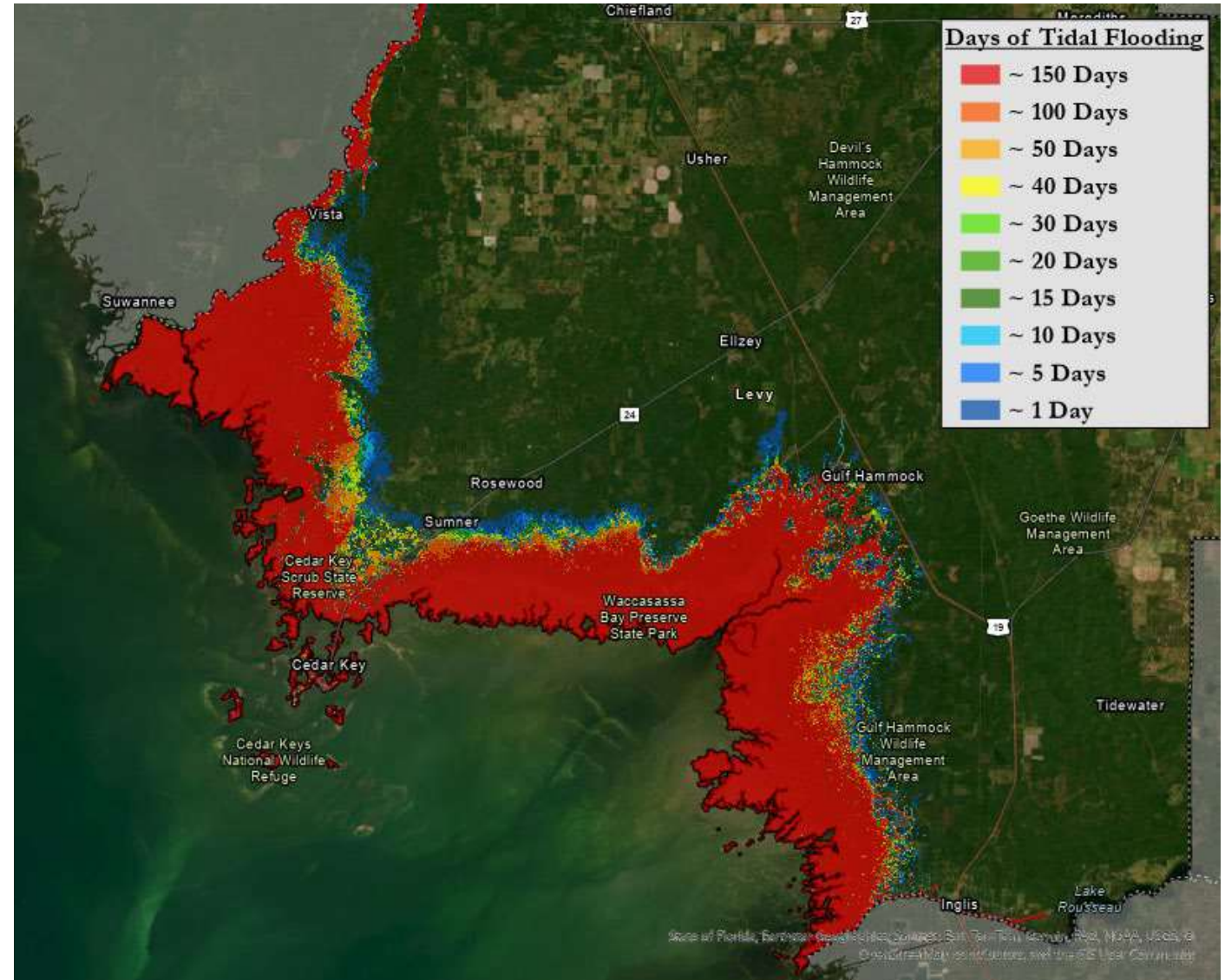
- Kickoff meeting with key staff from the County
- In-Person Data Collection Workshop
- Three Public and Stakeholder Meetings
- Online public survey for flooding locations



Summary of Flood Exposure

Coastal Flood Exposure Results

- Flood Exposure of Assets was assessed for:
 - 2022 NOAA Intermediate-Low and Intermediate Sea Level Rise
 - Current Conditions, 2040, 2070, 2100 (1%, 0.2% AEP Events)
- Coastal Levy County and low-lying areas near the coast face major flood risks due to sea level rise and storm surge
- Risks are expected to grow over time

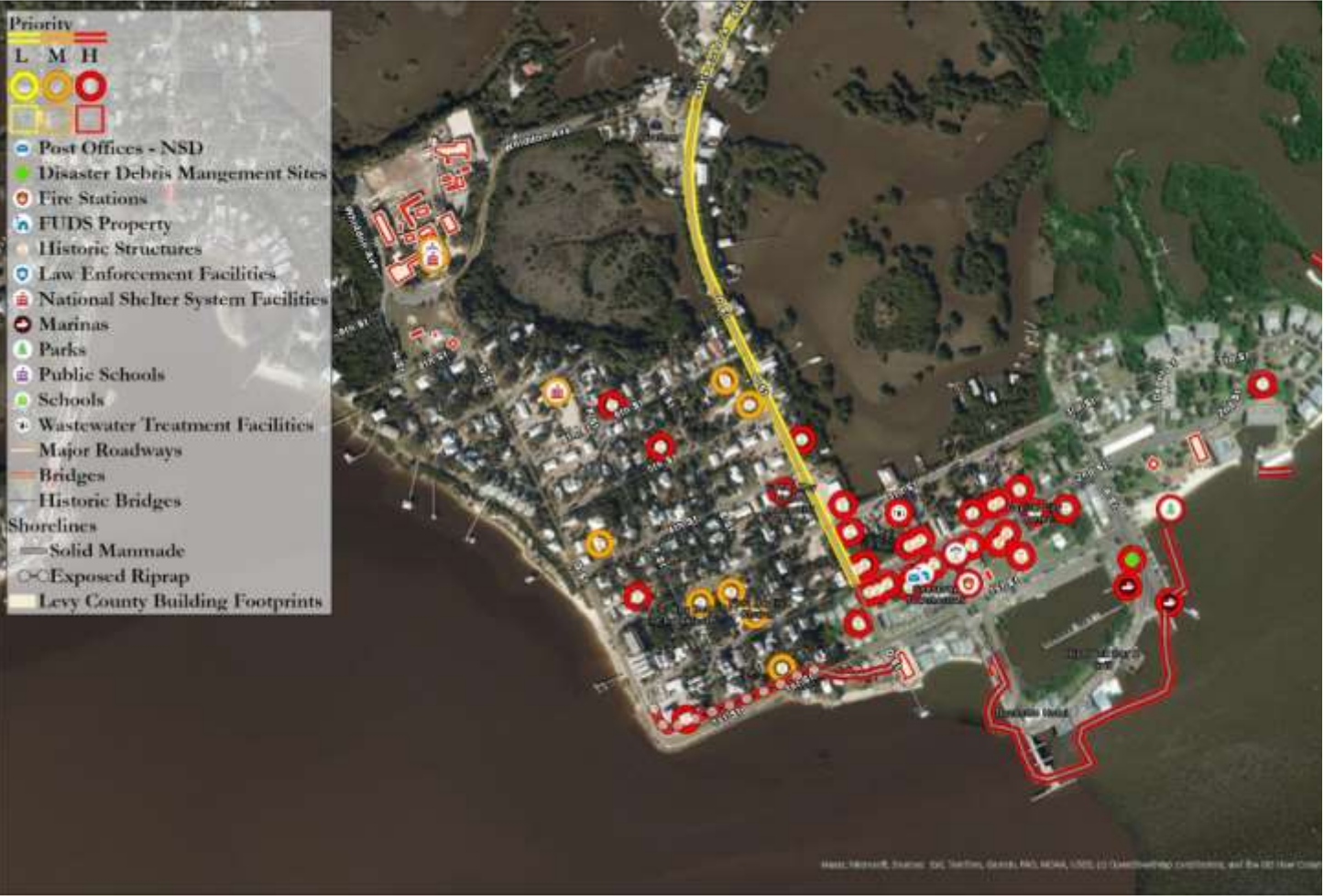


Compound Flooding Impacts

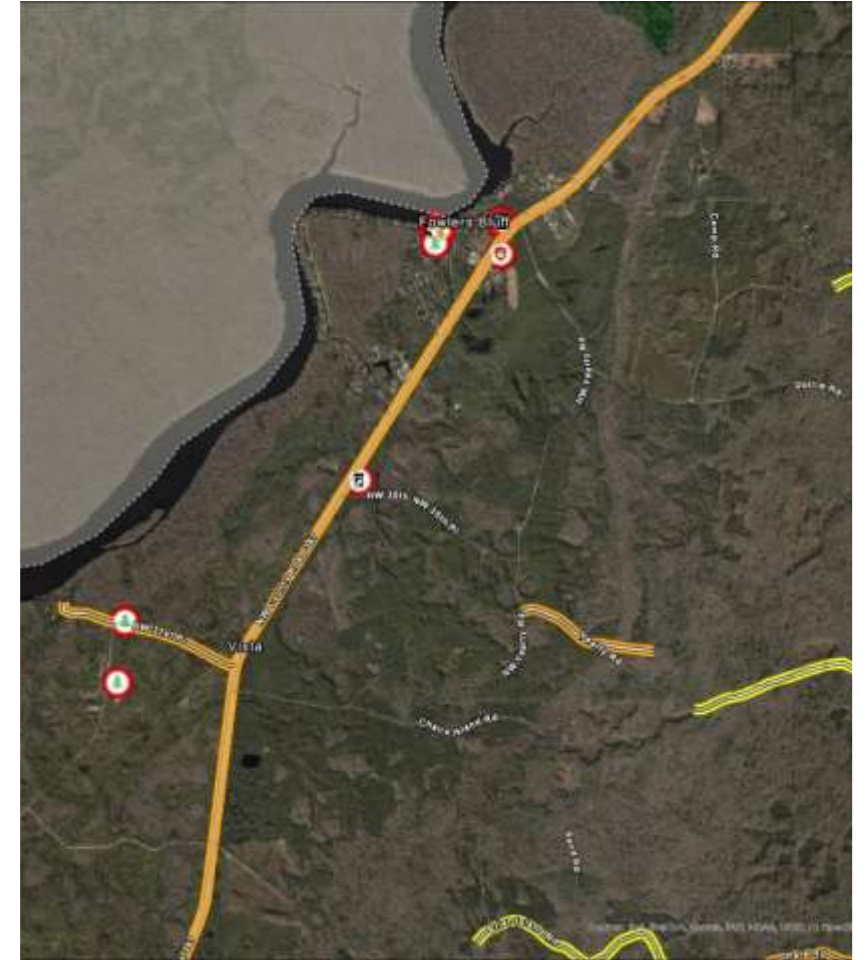
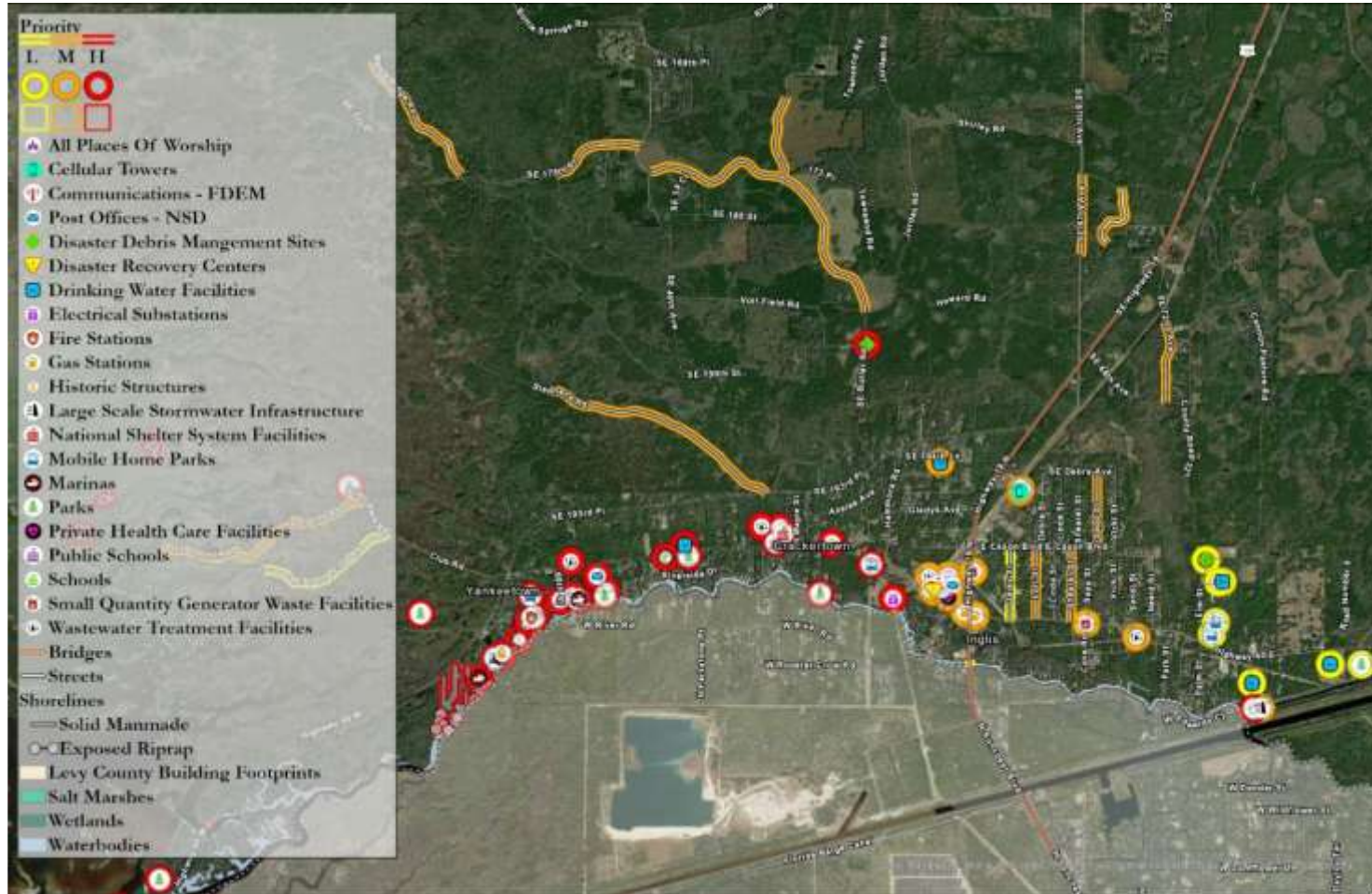
Sea Level Rise Scenario and Time Horizon	Surge Scenario	Rainfall Scenario	Combined Water Rise (ft)
Present Day	1% (100-Year)	1% (100-Year) 24-Hour Storm Event	16.84
Intermediate Year 2040	1% (100-Year)	1% (100-Year) 24-Hour Storm Event	17.88
Intermediate Year 2070	1% (100-Year)	1% (100-Year) 24-Hour Storm Event	19.01
Intermediate Year 2100	1% (100-Year)	1% (100-Year) 24-Hour Storm Event	20.96

Sample Areas with High Vulnerability And Path Forward

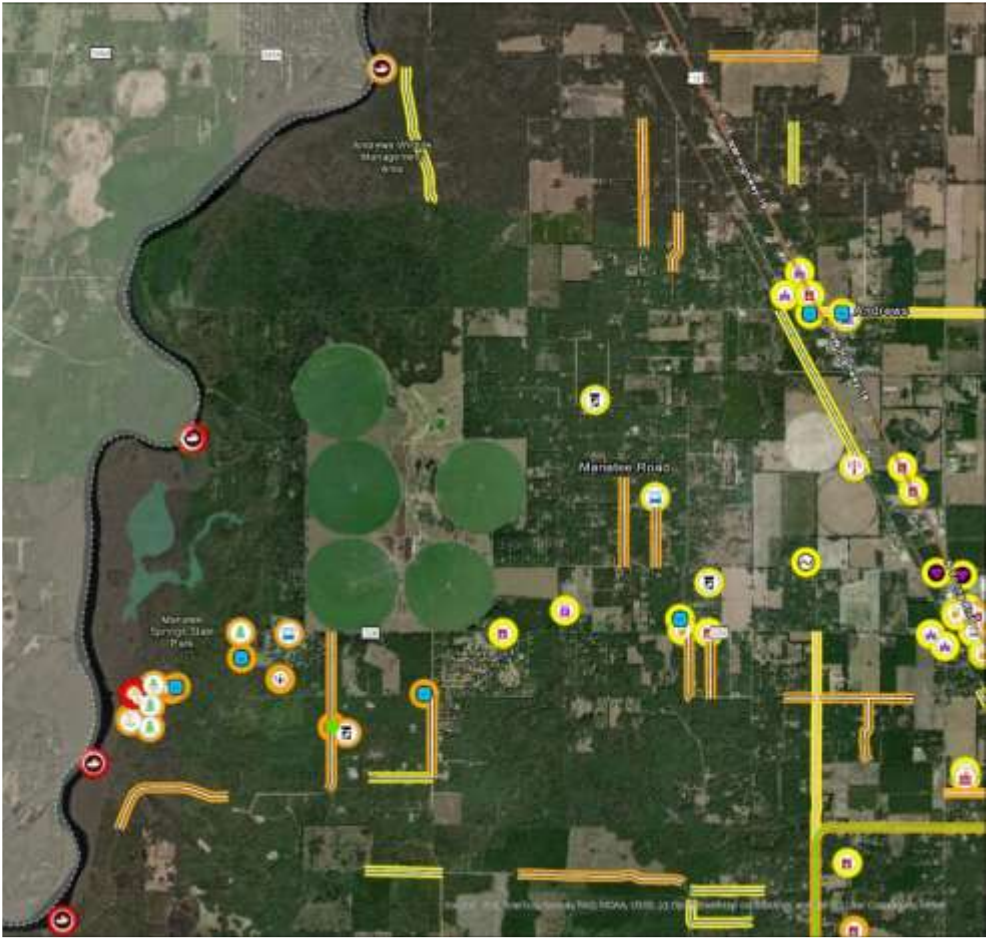
Cedar Key and North Trail



Yankeetown, Inglis Area, Lower Suwannee/Flowers Bluff



Waccasassa Bay/Gulf Hammock and Manatee Springs



Path Forward

- Final VA Report to FDEP: Approved
- Adaptation Plan Funding – Awarded!
 - Provides:
 - Funding to review and recommend municipal code improvements, to improve flood protection, and reduce Flood Insurance Costs
 - Funding for the initial design of flood mitigation projects
 - Workshops to Prioritize Mitigation Projects
- Consider application for Priority Project Construction:
 - Grant applications accepted July 1-August 31
 - 100% funded for financially disadvantaged counties





Dewberry[®]