

MONTGOMERY COUNTY SHERIFF

600 Memorial Drive, Crawfordsville, IN 47933

CASE STUDY



US.7760.01

THE GOLD INITIATIVE
Simply Priceless

THE BENEFITS OF THE GOLD INITIATIVE PROGRAM

- 1 ZERO CAPITAL COST**

Our best-in-class energy-efficient lighting system will be installed at no capital expenditure to the customer

- 2 ZERO MAINTENANCE**

The customer eliminates all maintenance costs for the term of the Agreement as the responsibility for parts and labor remains with FES under the Gold Initiative Program

- 3 ABSOLUTE SAVINGS**

From the moment the lights are switched on, the Custom Lighting Solution ("CLS") will significantly reduce energy consumption and reduce costs

- 4 CUSTOMER ENHANCEMENT**

Lighting levels will increase dramatically after installation of the CLS and, therefore, the quality, health and safety of the working environment will improve, leading to greater productivity and enhanced appearance

- 5 ENVIRONMENTAL BENEFITS**

Energy-efficient lighting significantly reduces the carbon footprint

- 6 INSTALLATION**

The FES lighting upgrade can be installed with no impact on day-to-day operations

- 7 INFLATION PROTECTION**

Inflation will increase the energy cost and labour rates over time. The Gold Initiative Program payments remain fixed during the term of the Agreement and thus provides a built in inflation "hedge"

A SELECTION OF BRANDS THAT FEATURE FES LIGHT FIXTURES



DISCLAIMER OF THIRD-PARTY ENDORSEMENT

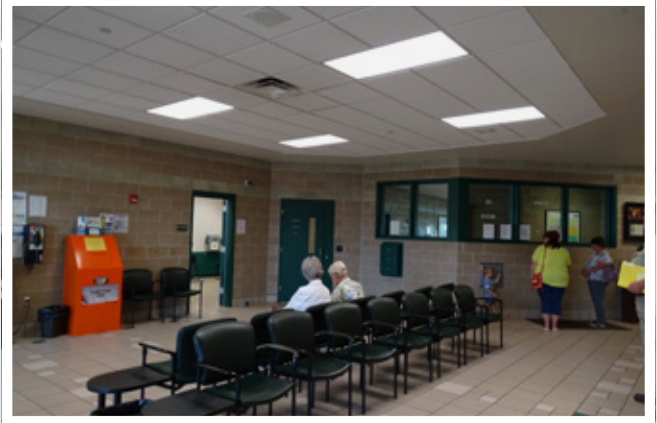
Images may depict third parties by name, trademark, product or otherwise. Such depiction is not intended to, nor should be construed to suggest any endorsement by such third party of FES, its products or programs. Images shown are intended only to demonstrate the performance of FES products at completed project sites.

SUMMARY

MONTGOMERY COUNTY SHERIFF • 600 Memorial Drive, Crawfordsville, IN 47933

PROJECT GOALS

- Improved lighting levels
- Lower kilowatt consumption
- Reduction in overall spend on energy and maintenance
- Replacement of broken fixtures



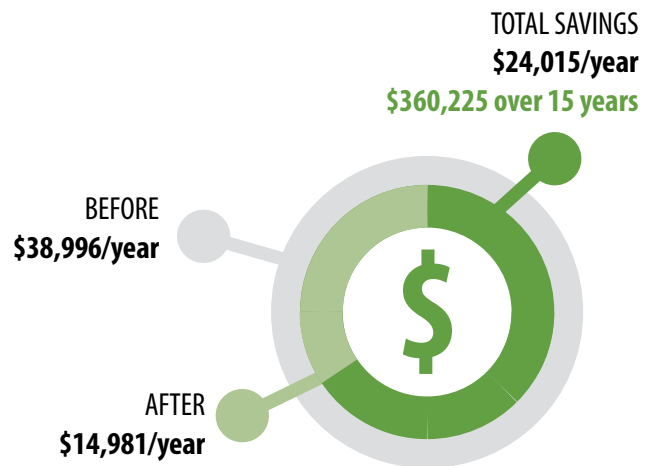
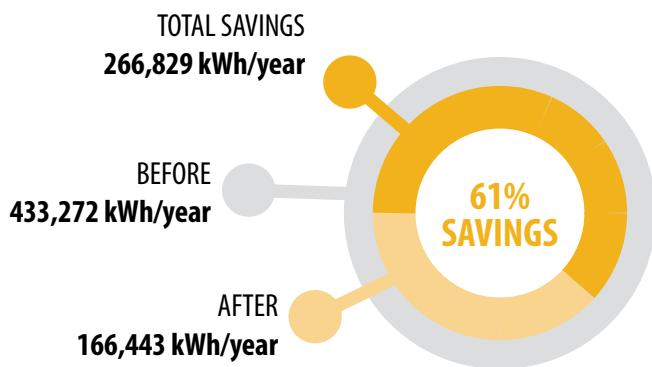
OUTCOME FROM GOLD INITIATIVE PARTNERSHIP

- No capital expenditure
- 1 Substantial reduction in energy consumption of savings up to 76%
- 2 Elimination of maintenance costs & lamp replacements as cost transfers to Future Energy Solutions under the Gold Initiative program
- 3 Increased lighting levels
- 4 Increased sense of security
- 5 Elimination of color depreciation
 - Carbon emission and green benefits which flow from using less energy and being more energy-efficient
 - Creation of an energy price hedge in respect of the cost savings being fixed for the life of the contract



STATISTICS

629 FIXTURES REPLACED • **15** HOURS PER DAY • **341** DAYS A YEAR





ENERGY SAVINGS SUMMARY

Project Number:	US17374 - Rev2	Site Name:	Montgomery County Sheriff
Country:	USA	Cost pkw:	0.090
Business Name:	Montgomery County	Average Operational Hours:	15
Site Address:	600 Memorial Drive , Crawfordsville, IN 47933	Average Operational Days:	341

	CURRENT SYSTEM	GOLD INITIATIVE	
Total Number of Light Fixtures	629 FIXTURES	629 FIXTURES	
Total Wattage of Light Fixtures	83.14 KW	31.71 KW	
Total Wattage Consumed Per Year	433,272 KwH	166,443 KwH	CALCULATIONS
Energy Cost of Light Fixtures Per Year	\$38,996	\$14,981	Electricity Savings \$38,996 - \$14,981 = \$24,015
Projected Maintenance Costs	\$12,014	FREE	Gold Initiative Savings ("GIS") \$24,015 * 25% = \$6,004
Fixtures & Maintenance Payments	Montgomery County	FES	GIS + Maintenance Savings \$6,004 + \$12,014 = \$18,018
EBITDA Effect	DRAIN	ENHANCEMENT	↓
Overall Lighting Performance	POOR	EXCELLENT	
Annual Totals	Current Annual Expenses \$51,009	Forecast Annual Expenses \$32,991	Total Annual Savings \$18,018
Total Over 15 Years	Current Total Cost Over 15 Years \$765,141	Forecast Total Cost Over 15 Years \$494,871	Total Savings Over 15 Years \$270,270

THIS CONTRACT DELIVERS 35.32% ANNUAL SAVINGS AND THE FOLLOWING POSITIVE IMPACT ON ENVIRONMENT

410,916 lbs	1,612 lbs	791 lbs	51	36
Annual CO2 emission reduction	Annual SO2 emission reduction	Annual NOx emission reduction	Acres of Forest Added	Cars Removed From the Road

WHO WE ARE

FES is a privately-owned business split into separate geographical groups focusing on funding scaled re-lamping solutions throughout North America, and Europe.

FES works with major asset owners and independent operators.



United States Headquarters

Prospect Park
5400 NW 35th Avenue
Fort Lauderdale, FL 33309
+1 954 714 0300

European Headquarters

10 Gloucester Place
Portman Square
London W1U 8EZ
+44 207 908 3929

OUTCOME FROM GOLD INITIATIVE PARTNERSHIP

No capital expenditure

No maintenance or lamp replacements costs

Lower Carbon emissions

Substantial reduction in energy consumption up to 76%

Increased lighting levels

Built-in energy inflation price hedge

Increased sense of security

Contact us today to find out if you qualify, and receive a free lighting Audit!

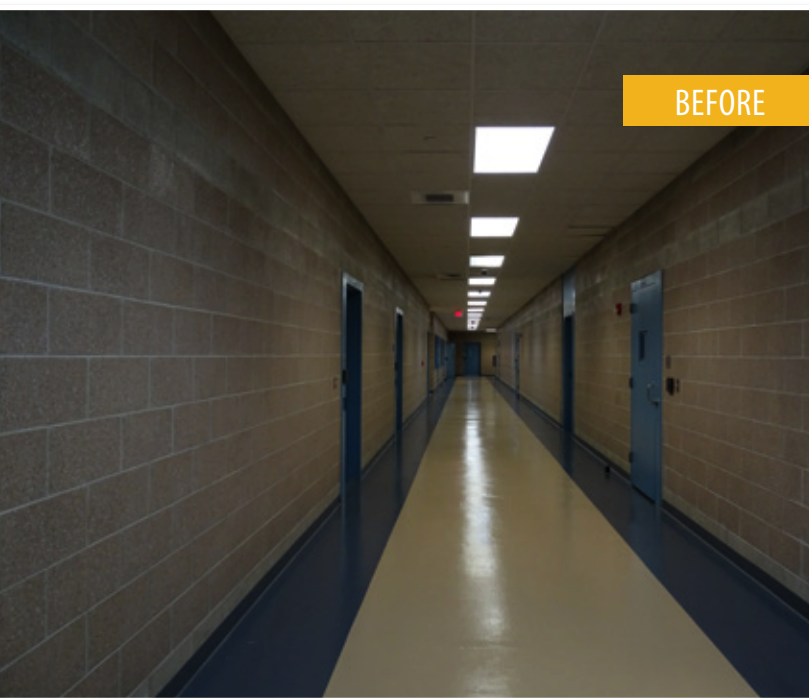
John Evans
 1 (954) 235 4141
 johnevens@feslighting.com



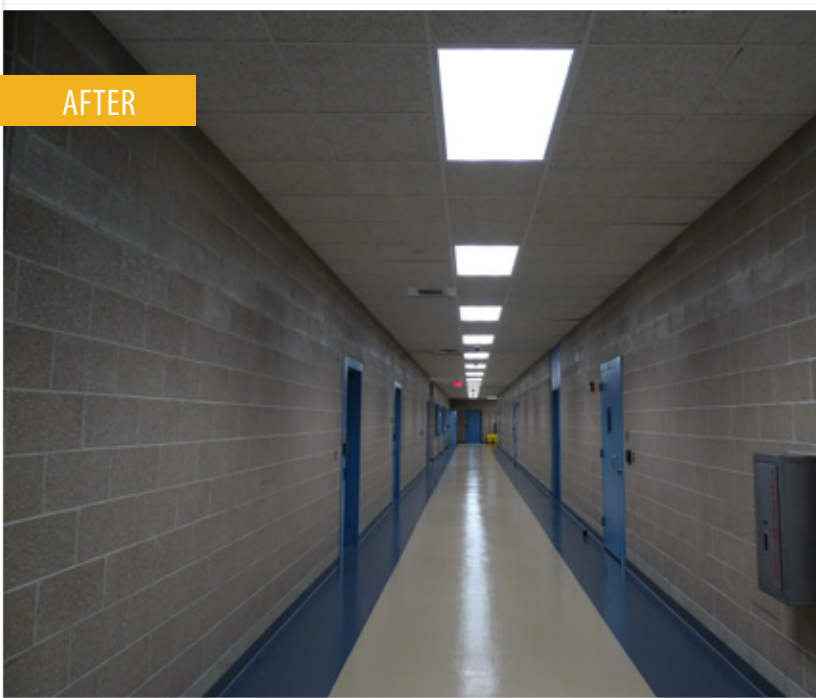
BEFORE



AFTER



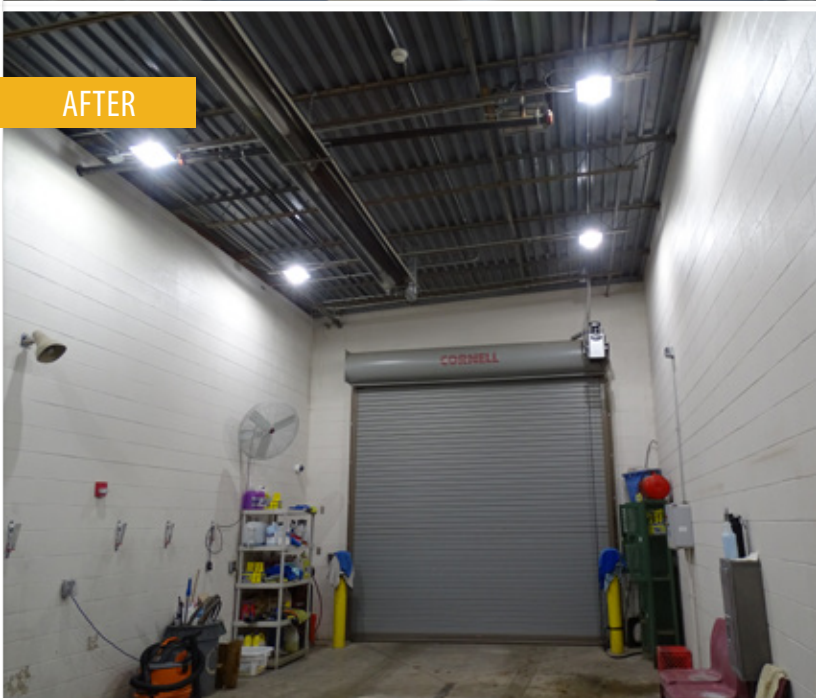
BEFORE



AFTER



BEFORE



AFTER



DISCLAIMER OF THIRD-PARTY ENDORSEMENT

Images may depict third parties by name, trademark, product or otherwise. Such depiction is not intended to, nor should be construed to suggest any endorsement by such third party of FES, its products or programs. Images shown are intended only to demonstrate the performance of FES products at completed project sites.

DISCLAIMER

The Future Energy Solutions Lighting Holdings LLLP ("FES") documents are an estimate and for discussion purposes only and do not purport to contain all information that may be required to evaluate the transaction or the financial position of the savings or project opportunity.

No representation or warranty, express or implied, is given by or on behalf of FES, its sales executives, subsidiaries, members, directors, officers or employees or any other person as to the accuracy or completeness of the information or opinions contained in this document and no liability whatsoever is accepted by FES, its sales executives, subsidiaries, members, directors, officers or employees or any other person for any loss howsoever arising, directly or indirectly, from any use of such information or opinions or otherwise arising in connection therewith.

The information and opinions expressed in the FES documents are provided as of the date of this document.



FES - US Headquarters
Prospect Park
5400 NW 35th Avenue
Fort Lauderdale, FL 33309
Telephone: +1 954 714 0300

FES - European Headquarters
10 Gloucester Place
Portman Square
London W1U 8EZ
Telephone: +44 207 908 3929

Visit our Websites
US www.feslighting.com
EU www.feslighting.co.uk

© 2019 FES Lighting