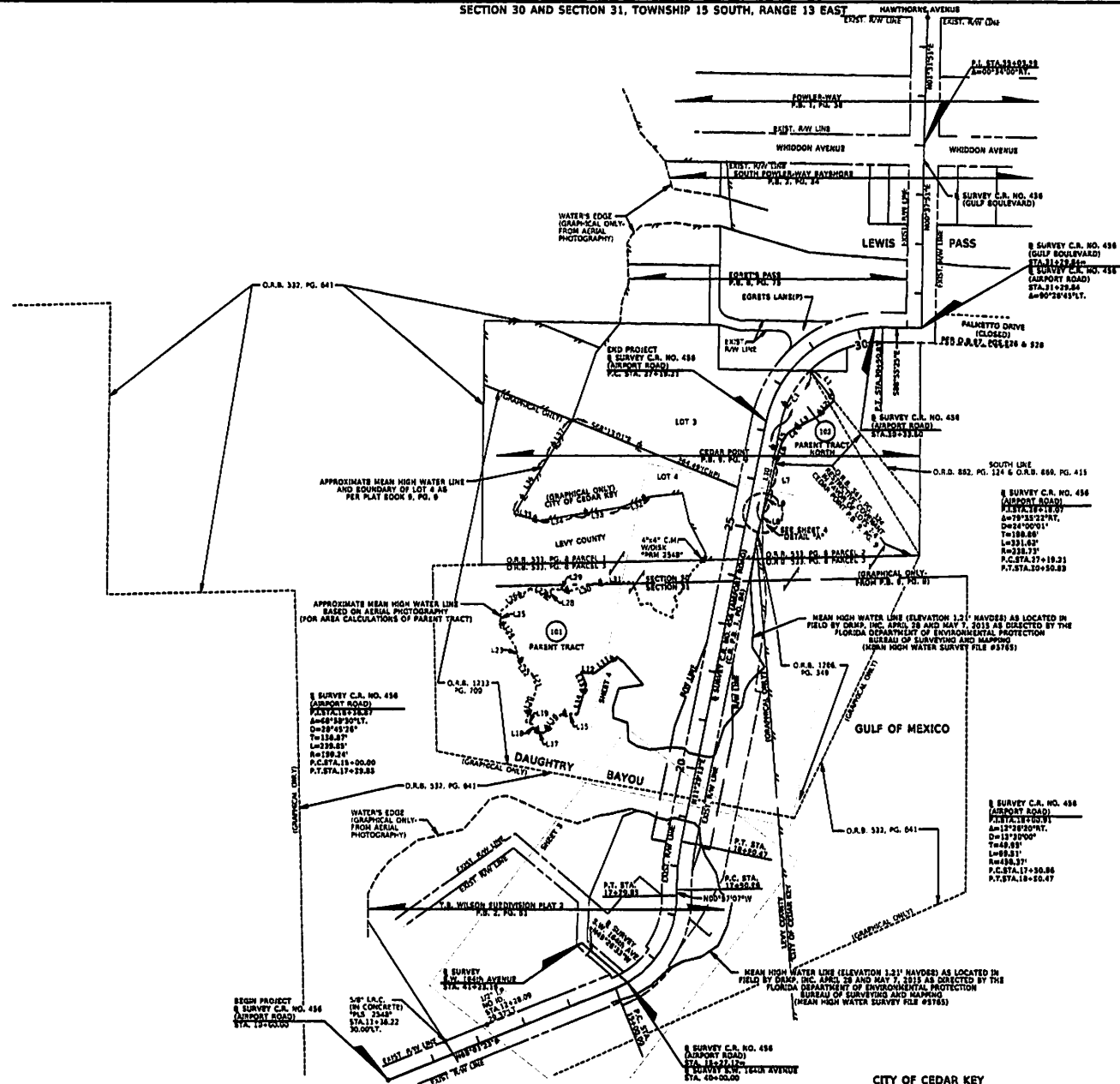
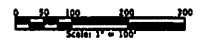


SECTION 30 AND SECTION 31, TOWNSHIP 15 SOUTH, RANGE 13 EAST



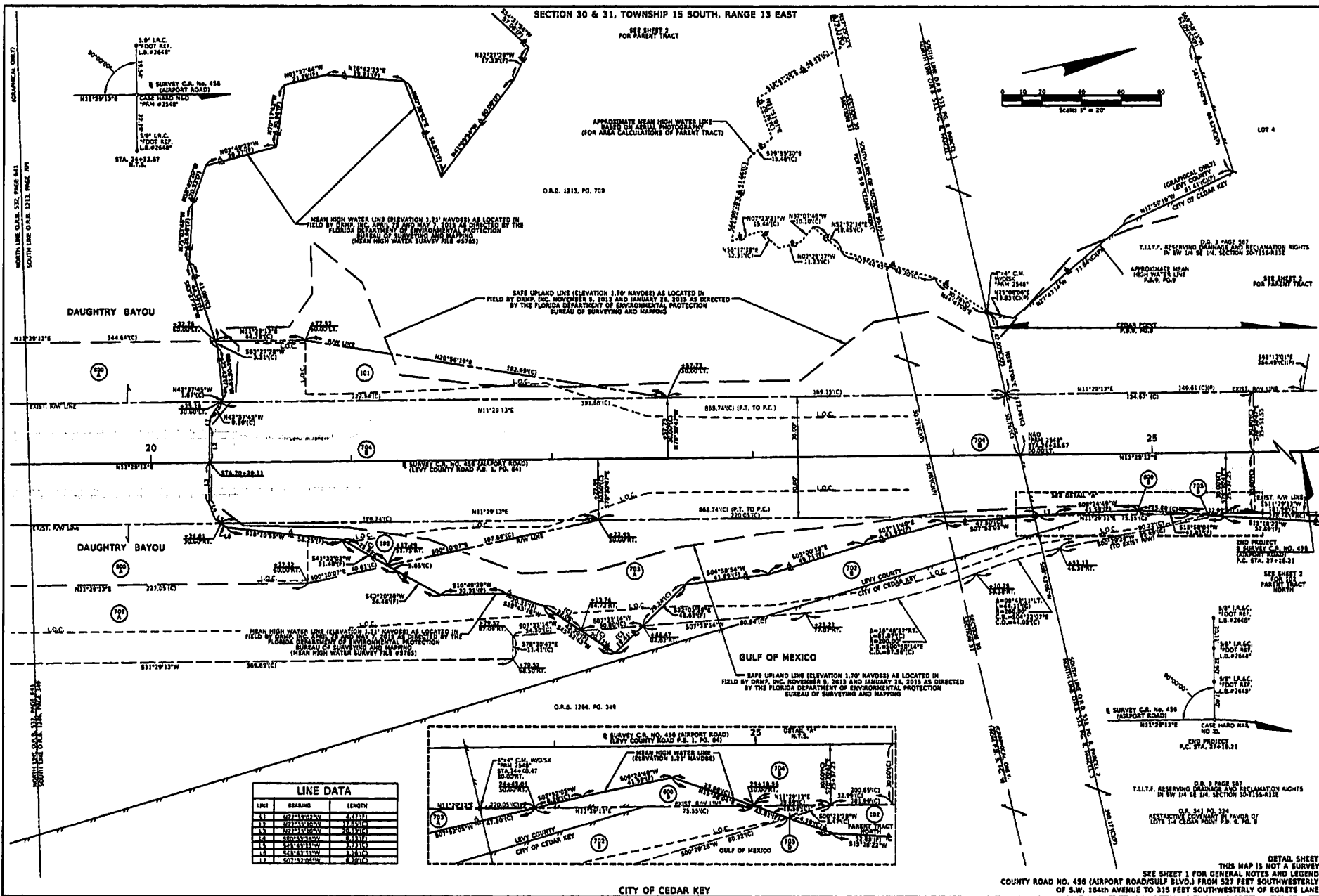
LINE DATA		
LINE	BEARING	LENGTH
1.1	S83°04'03"W	78.15(4)
1.2	S55°21'30"W	47.83(4)
1.3	S28°15'03"W	32.82(1)
1.4	S52°28'30"W	35.87(1)
1.5	S31°10'00"W	31.12(1)
1.6	S55°28'11"W	45.07(1)
1.7	S32°25'01"W	45.07(1)
1.8	S15°15'22"W	22.25(1)
1.9	S11°17'11"W	20.25(1)
1.10	S11°17'11"W	20.25(1)
1.11	S55°11'25"W	37.02(1)
1.12	S55°11'25"W	37.02(1)
1.13	S55°11'25"W	37.02(1)
1.14	S11°17'11"W	20.25(1)
1.15	S20°20'20"W	37.17(1)
1.16	S5°21'00"W	37.21(1)
1.17	S71°11'21"W	41.17(1)
1.18	S71°11'21"W	41.17(1)
1.19	S71°11'21"W	41.17(1)
1.20	S22°28'12"W	29.25(1)
1.21	S22°28'12"W	29.25(1)
1.22	S61°13'10"W	43.00(1)
1.23	S11°17'11"W	20.25(1)
1.24	S22°28'12"W	29.25(1)
1.25	S22°28'12"W	29.25(1)
1.26	S22°28'12"W	29.25(1)
1.27	S22°28'12"W	29.25(1)
1.28	S22°28'12"W	29.25(1)
1.29	S22°28'12"W	29.25(1)
1.30	S22°28'12"W	29.25(1)
1.31	S22°28'12"W	29.25(1)
1.32	S22°28'12"W	29.25(1)
1.33	S22°28'12"W	29.25(1)
1.34	S22°28'12"W	29.25(1)
1.35	S22°28'12"W	29.25(1)
1.36	S22°28'12"W	29.25(1)
1.37	S22°28'12"W	29.25(1)
1.38	S22°28'12"W	29.25(1)
1.39	S22°28'12"W	29.25(1)
1.40	S22°28'12"W	29.25(1)
1.41	S22°28'12"W	29.25(1)
1.42	S22°28'12"W	29.25(1)
1.43	S22°28'12"W	29.25(1)
1.44	S22°28'12"W	29.25(1)
1.45	S22°28'12"W	29.25(1)
1.46	S22°28'12"W	29.25(1)
1.47	S22°28'12"W	29.25(1)
1.48	S22°28'12"W	29.25(1)
1.49	S22°28'12"W	29.25(1)
1.50	S22°28'12"W	29.25(1)
1.51	S22°28'12"W	29.25(1)
1.52	S22°28'12"W	29.25(1)
1.53	S22°28'12"W	29.25(1)
1.54	S22°28'12"W	29.25(1)
1.55	S22°28'12"W	29.25(1)
1.56	S22°28'12"W	29.25(1)
1.57	S22°28'12"W	29.25(1)
1.58	S22°28'12"W	29.25(1)
1.59	S22°28'12"W	29.25(1)
1.60	S22°28'12"W	29.25(1)
1.61	S22°28'12"W	29.25(1)
1.62	S22°28'12"W	29.25(1)
1.63	S22°28'12"W	29.25(1)
1.64	S22°28'12"W	29.25(1)
1.65	S22°28'12"W	29.25(1)
1.66	S22°28'12"W	29.25(1)
1.67	S22°28'12"W	29.25(1)
1.68	S22°28'12"W	29.25(1)
1.69	S22°28'12"W	29.25(1)
1.70	S22°28'12"W	29.25(1)
1.71	S22°28'12"W	29.25(1)
1.72	S22°28'12"W	29.25(1)
1.73	S22°28'12"W	29.25(1)
1.74	S22°28'12"W	29.25(1)
1.75	S22°28'12"W	29.25(1)
1.76	S22°28'12"W	29.25(1)
1.77	S22°28'12"W	29.25(1)
1.78	S22°28'12"W	29.25(1)
1.79	S22°28'12"W	29.25(1)
1.80	S22°28'12"W	29.25(1)
1.81	S22°28'12"W	29.25(1)
1.82	S22°28'12"W	29.25(1)
1.83	S22°28'12"W	29.25(1)
1.84	S22°28'12"W	29.25(1)
1.85	S22°28'12"W	29.25(1)
1.86	S22°28'12"W	29.25(1)
1.87	S22°28'12"W	29.25(1)
1.88	S22°28'12"W	29.25(1)
1.89	S22°28'12"W	29.25(1)
1.90	S22°28'12"W	29.25(1)
1.91	S22°28'12"W	29.25(1)
1.92	S22°28'12"W	29.25(1)
1.93	S22°28'12"W	29.25(1)
1.94	S22°28'12"W	29.25(1)
1.95	S22°28'12"W	29.25(1)
1.96	S22°28'12"W	29.25(1)
1.97	S22°28'12"W	29.25(1)
1.98	S22°28'12"W	29.25(1)
1.99	S22°28'12"W	29.25(1)
2.00	S22°28'12"W	29.25(1)

CURVE DATA					
CURVE	Δ	RADIUS	LENGTH	CHORD BEARING	CHORD DISTANCE
1	27°37'25"N	208.73'	178.11(1)	N78°18'00"E	128.21(1)

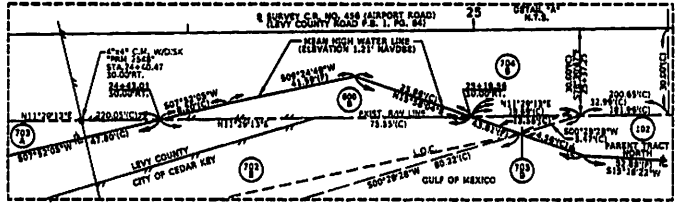
KEY SHEET
THIS MAP IS NOT A SURVEY
SEE SHEET 1 FOR GENERAL NOTES AND LEGEND
COUNTY ROAD NO. 456 (AIRPORT ROAD/GULF BLVD.) FROM 527 FEET SOUTHWESTERLY OF S.W. 1645th AVENUE TO 315 FEET SOUTHWESTERLY OF EGRETS LAKE

RIGHT OF WAY MAP	FLORIDA DEPARTMENT OF TRANSPORTATION RIGHT OF WAY MAPPING	APPROVED BY: <u> </u> DATE: <u> </u>	BY: <u> </u> DATE: <u> </u>	FED. PROJ. NO. 0092-077-B	SECTION 34500	DATE PREPARED BY: <u> </u> DATE: <u> </u>	DATE CHECKED BY: <u> </u> DATE: <u> </u>
		N.P. DISTRICT SECRETARY	REVISION	COUNTY ROAD NO. 456	LEVY COUNTY	F.P. NO. 4152521	SHEET 2 OF 6

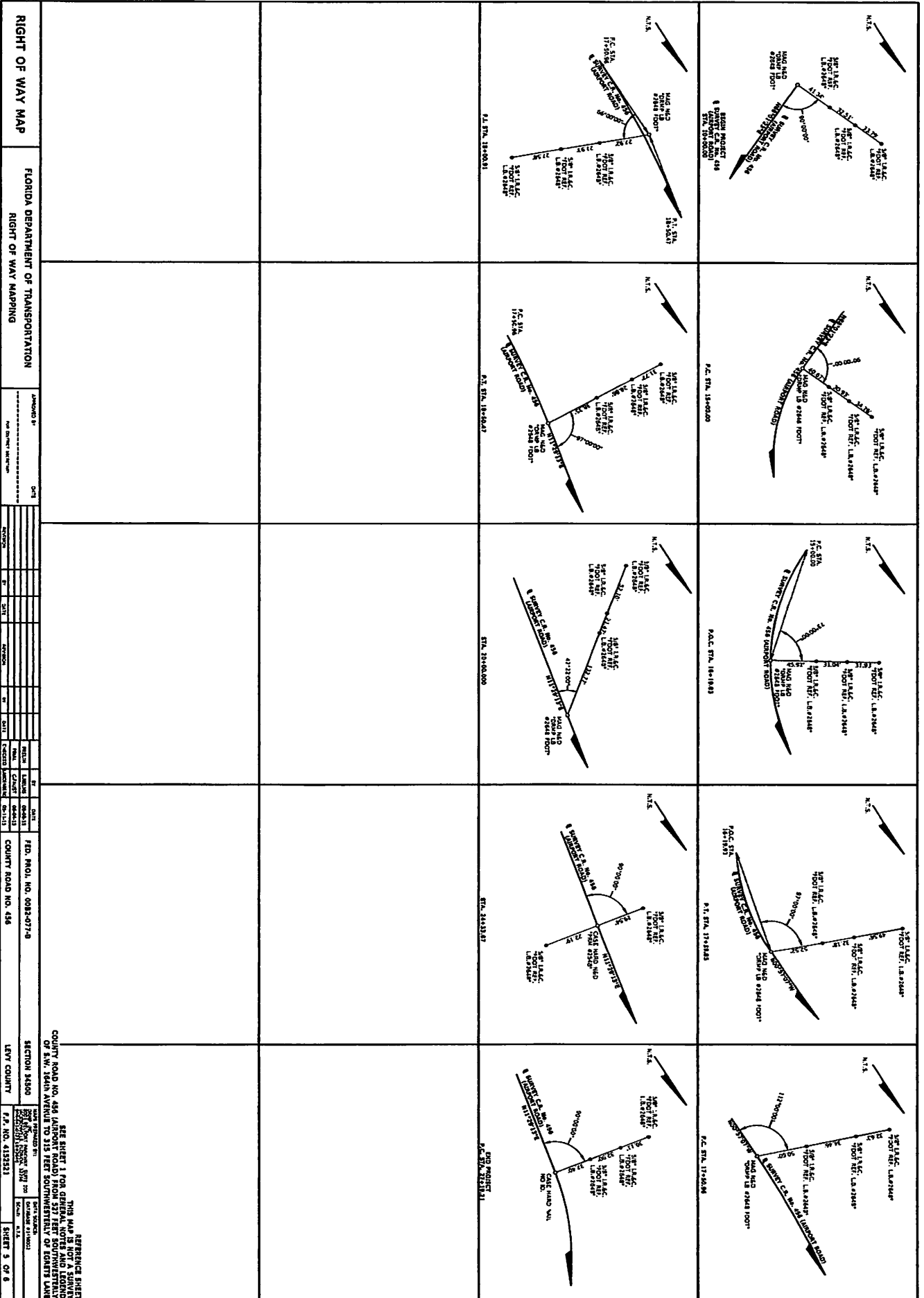
SECTION 30 & 31, TOWNSHIP 15 SOUTH, RANGE 13 EAST



LINE DATA		
LINE	BEARING	LENGTH
1	N72°31'00"W	2.71(10)
2	N71°31'00"W	17.83(10)
3	N22°31'00"W	20.31(10)
4	S89°31'00"W	2.71(10)
5	S11°31'00"W	2.71(10)
6	S11°31'00"W	2.71(10)
7	S11°31'00"W	2.71(10)



THIS MAP IS NOT A SURVEY
 SEE SHEET 3 FOR GENERAL NOTES AND LEGEND
 COUNTY ROAD NO. 456 (AIRPORT ROAD/CUL DE SAC) FROM 527 FEET SOUTHWESTERLY
 OF S.W. 104th AVENUE TO 315 FEET SOUTHWESTERLY OF EGRETS LAKE



RIGHT OF WAY MAP

FLORIDA DEPARTMENT OF TRANSPORTATION
RIGHT OF WAY MAPPING

PROJECT NO. 00000000
DATE 01/11/13

NO.	DATE	DESCRIPTION
1	01/11/13	ISSUED FOR CONSTRUCTION

FED. PROJ. NO. 0002-077-B
COUNTY ROAD NO. 456

SECTION 34500
LEWY COUNTY

DATE REVISION BY
01/11/13

THIS MAP IS NOT A SURVEY
SEE SHEET 1 FOR GENERAL NOTES AND LEGEND
OF S.W. 16th AVENUE TO 315 FEET SOUTHWESTERNLY OF EIGHTH LANE

SECTION 34500
LEWY COUNTY
SHEET 3 OF 8

TABLE

OF

OWNERSHIPS

PARCEL NO.	SHEET NO.	NAME	AREA TAKEN	REMAINDERS		COMMENTS	RECORDING DATA	REVISIONS	
				LEFT	RIGHT			DATE	BY
100A	3	BOBBY L. WILDER AND MARGARET L. WILDER, CO-TRUSTEES	1,341 S.F.	18,107 S.F.	9,791 S.F.				
101	3A	ROBERT H. HINSHAW AND LINDA B. HINSHAW, HUSBAND AND WIFE	3,682 S.F.	3,424 AC.	0				
102	3A	NANCY N. PARKER	1,808 S.F.	0	16,032 S.F.				
209	3	LAREN MUNICIPAL SUPPLY CO., INC.	420 S.F.	8,788 S.F.	4,122 S.F.				
201	3	BOBBY L. WILDER AND MARGARET L. WILDER, CO-TRUSTEES	9,349 S.F.	(SEE PARCEL 100)	0				
202A	3A	TRUSTEES OF THE INTERNAL IMPROVEMENT TRUST FUND	19,028 S.F.	0	0				
202B	4	TRUSTEES OF THE INTERNAL IMPROVEMENT TRUST FUND	3,492 S.F.	0	0				
202A	4	NANCY N. PARKER	7,630 S.F.	(SEE PARCEL 102)	10 S.F.				
203B	4	NANCY N. PARKER	0 S.F.	(SEE PARCEL 102)	0				
204A	3	LEVY COUNTY, FLORIDA	0.247 AC.	0	0	C.R. NO. 456 (AIRPORT ROAD)			
204B	4	LEVY COUNTY, FLORIDA	0.217 AC.	0	0	C.R. NO. 456 (AIRPORT ROAD)			
800A	3A	TRUSTEES OF THE INTERNAL IMPROVEMENT TRUST FUND	10,739 S.F.	0	0				
800B	4	TRUSTEES OF THE INTERNAL IMPROVEMENT TRUST FUND	81 S.F.	0	0				

LEGEND

FLORIDA DEPARTMENT OF TRANSPORTATION	APPROVED BY	CITY	PARCEL NUMBER ID	TYPE USE	PARCEL NUMBER ID	TYPE USE	DATE	FED. PROJ. NO.	SECTION	LEVY COUNTY	DATE	SHEET 6 OF 6
RIGHT OF WAY MAPPING	100-989	700-798	DEEDS OF ALL TYPES	800-989	REPERVAL EASEMENTS	LICENSE	08-21-12	0083-077-B	3450	LEVY COUNTY	08-21-12	

THIS TABLE OF OWNERSHIPS IS A SUMMARY OF THE RECORDS OF THE COUNTY CLERK OF LEVY COUNTY, FLORIDA, AND IS NOT A GUARANTEE OF THE ACCURACY OF THE INFORMATION CONTAINED HEREIN. THE INFORMATION IS PROVIDED AS IS, WITHOUT WARRANTY OF ANY KIND, EXPRESS OR IMPLIED, INCLUDING BUT NOT LIMITED TO THE WARRANTIES OF MERCHANTABILITY, FITNESS FOR A PARTICULAR PURPOSE, AND NONINFRINGEMENT OF THIRD PARTY RIGHTS. ALL RIGHTS ARE RESERVED.