

PROJECT GLIDE



PROJECT SUMMARY

This project will study the use of land in Levy County for the development of an ecotourism escape and land development to support sustainable business and revenue generation sources for the County. This includes the development of transportation modes to support the plan. All development will be sustainable and in line with County goals to generate revenue and employ local residents to the extent possible and promote tourism and business opportunities. The transportation portion will be developed to support emerging technology and delivery companies based on the expansive growth of package delivery services, business development, local business enhancement and tourism activities. The study will encompass a truly holistic approach to land development and revenue generation to support multiple industries and services while integrating the development with the pristine nature of Levy County to sustain the local environmental qualities. Federal, State and Public/Private (P3) partnership monies will be an integral part of the plan to assure the County will take advantage of all sources of development financing. A successful phased approach will be developed with complete County and municipality involvement so that the development meets the needs of the local community.



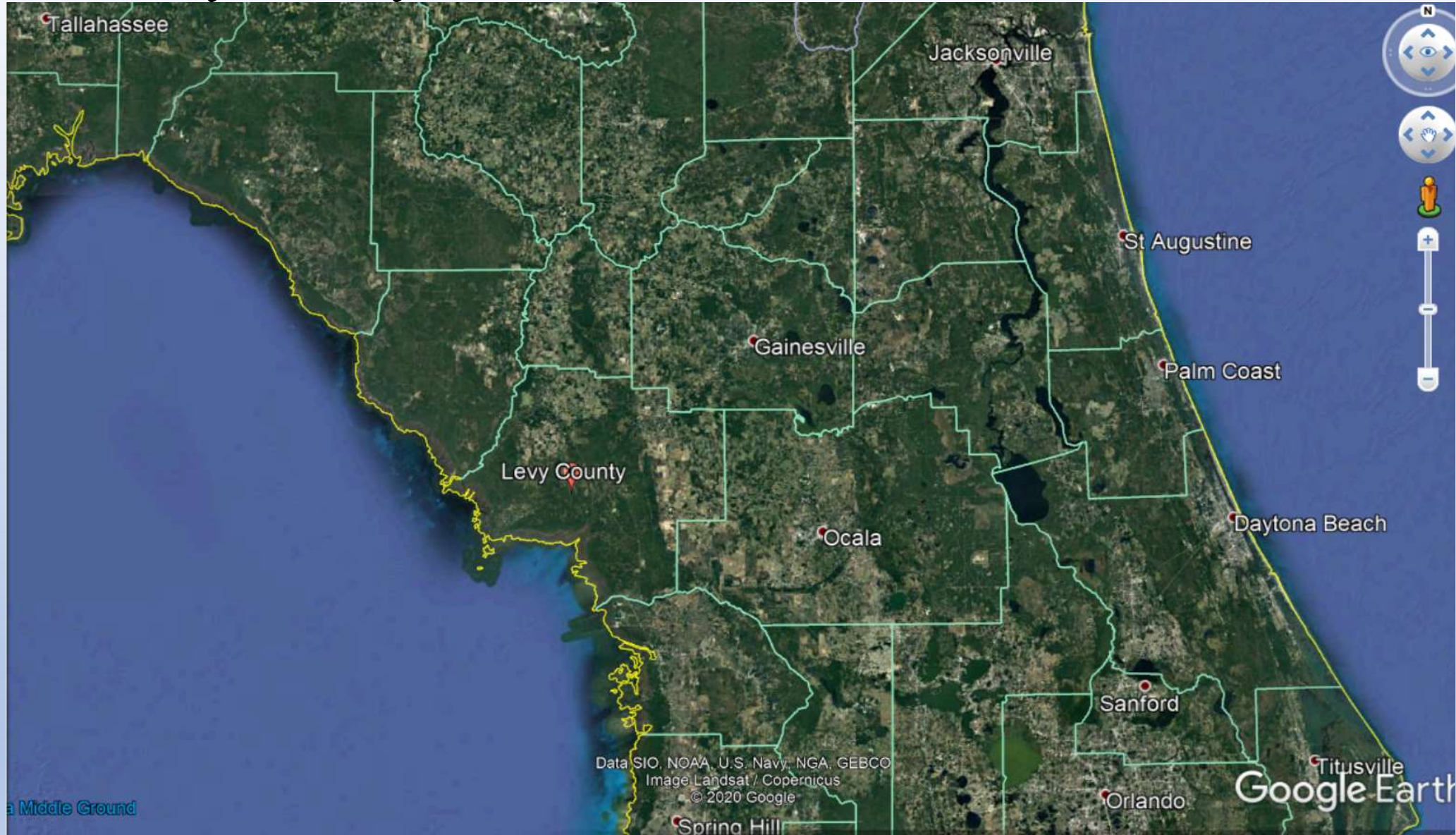
GOVERNMENT AGENCY INVOLVEMENT

- Levy County
- Withlacoochee Gulf Area Chamber of Commerce
- Florida Department of Economic Development
- Florida Department of Transportation
- FAA



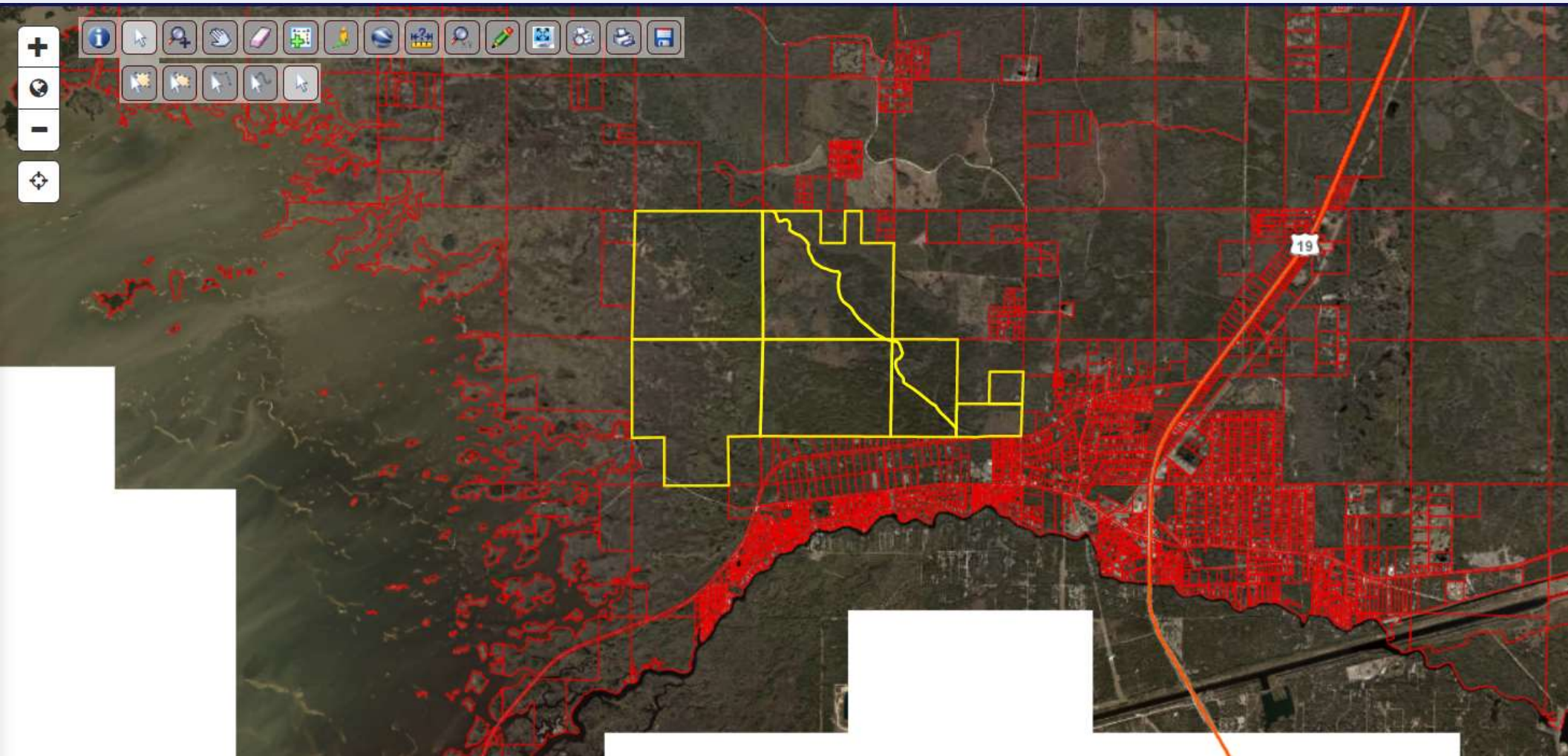
LOCATION OF PROJECT

➤ Levy County Florida



LOCATION OF PROJECT

- Potential Parcels for Development
Over 1,812 Acres for Development



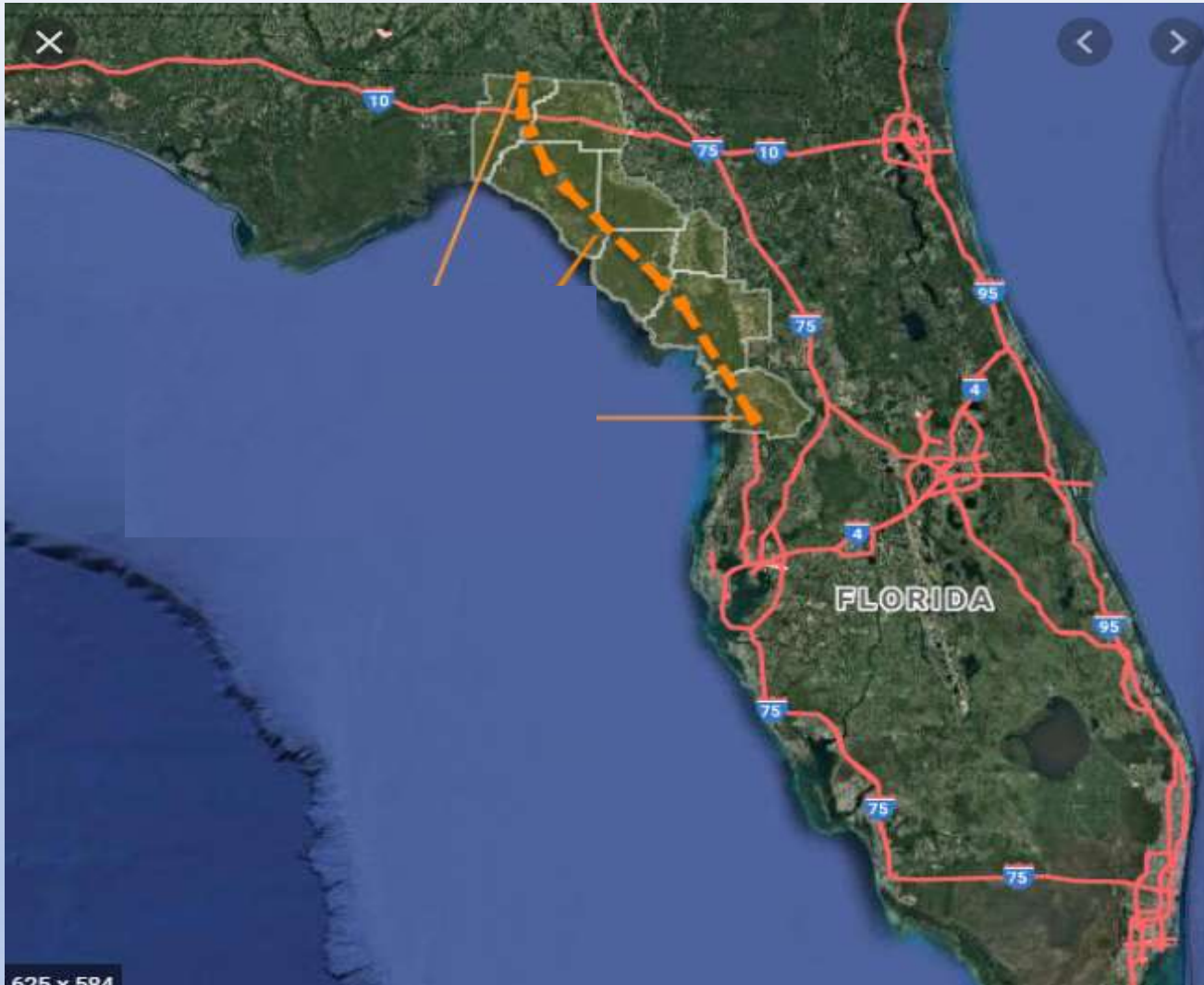
LAND USE DEVELOPMENT GOALS

- Utilities Enhancements
- Transportation Needs
- Lodging (Cabin, Hotel, RV Campgrounds)
- Entertainment (Concert Venue, Fishing, Boating, Sound Stage/Back Lot, Gun Range, Restaurants, Tourism Friendly Uses)
- Commercial Business
- Academic
- Solar Panel Farm
- Ecotourism Opportunities



TRANSPORTATION DEVELOPMENT GOALS

- Major Tollway Connecting Tampa and Orlando Area Already being Constructed



AIRPORT PROPERTY DEVELOPMENT GOALS

- New General Aviation Airport to Support
 - Specific Tourism
 - Unique Drone Facility for Package Delivery
 - Equestrian (Horse) Delivery
 - Flight School
 - Business Development
 - Disaster Staging
 - Electric Air Mobility



AIRPORT PROPERTY DEVELOPMENT GOALS

- 6,000 Foot Runway
- Apron
- Rental Car
- Drone Package Delivery Operations and MRO
- Vertiport Location
- ATV, Golf Cart, Motorcycle and RV Rentals
- Hangars
- FBO
- Fuel Sales
- Tourism Welcome Center
- Commercial Business Development
- Airport will Support Ancillary Development in the County

