

# Exhibit "A" to Resolution 2024-1

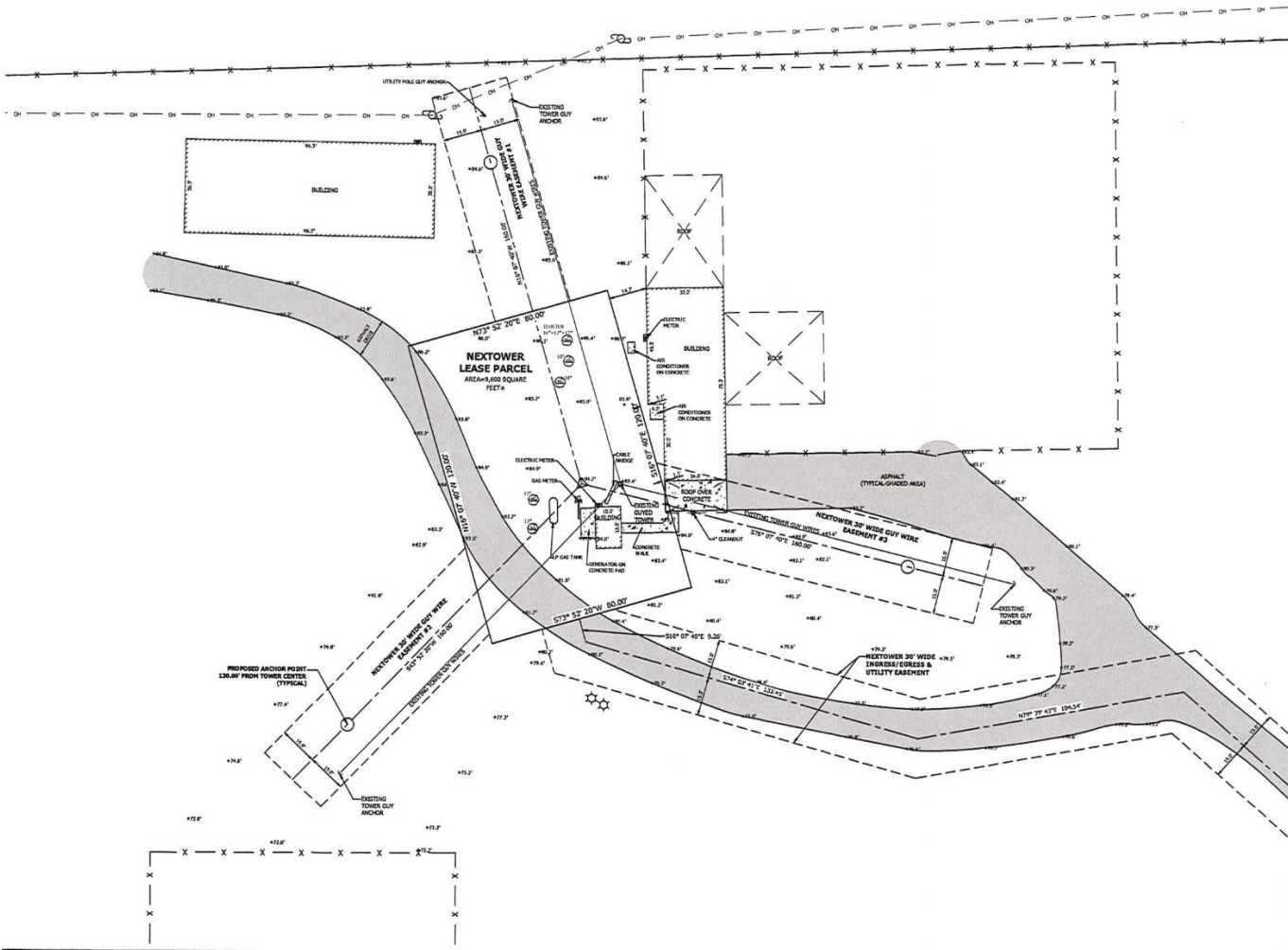
## BOUNDARY & TOPOGRAPHIC SURVEY OF NEXTOWER LEASE PARCEL

IN SECTION 6, TOWNSHIP 12 SOUTH, RANGE 17 EAST  
LEVY COUNTY, FLORIDA

- LEGEND**
- INDICATES 5/8" REBAR & CAP SET STAMPED LB 7810
  - INDICATES 4"x4" CONCRETE MONUMENT FOUND STAMPED PRM 2548
  - INDICATES NAIL & 7"x3" ALUMINUM PLATE STAMPED FDOT
  - R/W INDICATES RIGHT-OF-WAY
  - O.A. INDICATES OFFICIAL RECORDS BOOK
  - ID INDICATES IDENTIFICATION
  - NAVD 88 INDICATES NORTH AMERICAN VERTICAL DATUM OF 1988
  - ⊕ INDICATES WOOD UTILITY POLE
  - — — INDICATES OVERHEAD UTILITY WIRES
  - — — INDICATES FENCE
  - INDICATES FIBER BOX
  - INDICATES TELEPHONE PEDESTAL
  - ☆ INDICATES WOOD POLE WITH SIRENS
  - ⊙ INDICATES TURKEY OAK WITH TRUNK DIAMETER
  - +44.1' INDICATES EXISTING SPOT ELEVATION



- SURVEYOR'S NOTES**
1. BEARINGS SHOWN HEREON ARE ASSUMED AND REFERENCED TO THE NORTH LINE OF THE SE 1/4 OF THE SE 1/4 OF SECTION 6-12-17 AS BEARING N89° 40' 51"E.
  2. PROPERTY TIES ARE PERPENDICULAR MEASURE UNLESS OTHERWISE NOTED.
  3. ELEVATIONS ARE NORTH AMERICAN VERTICAL DATUM OF 1988 (NAVD 88) AND ARE REFERENCED TO THE STATE OF FLORIDA PERMANENT REFERENCE NETWORK.
  4. THIS SURVEY CONSISTS OF 3 SHEETS. SEE SHEET 1 FOR PARENT TRACT DATA, NOTES AND LEGAL DESCRIPTIONS. SEE SHEET 2 FOR NEXTOWER BOUNDARY DATA.



**STONECYPHER SURVEYING INC.**  
 1225 NW 18TH AVENUE GAINESVILLE, FLORIDA 32601  
 Tel: (352) 379-0948  
 Email: csw@stone-survey.com  
 Professional Surveying & Mapping Certificate of Authorization No. 12 7612

BOOKPAGE	46/84	SCALE	1" = 20'
DRAWN	DWS	DATE	SEPTEMBER 11, 2023
CHECKED	DWS	PROJECT #	22-0087
<b>COMMUNICATION TOWER SITE LEVY COUNTY SHERIFF'S OFFICE NXFL-362</b>			
DRAWING #	nextower-levy-county-survey.dwg	SHEET #	3 OF 3